

BRK[®]

THE PROFESSIONAL STANDARD

Product Catalog

Distributor

Volume 16

SMOKE ALARMS

CO ALARMS

COMBO ALARMS

HEAT ALARMS

LEADERS IN RESIDENTIAL & MULTI-FAMILY ALARM TECHNOLOGY



Wi-Fi Wireless

Combo Alarms Safes

From the #1 Most
Trusted Brand in
Home Safety.

120V Hardwire

10yr Sealed Battery



First Alert

Onelink[®]

Wi-Fi Smoke + Carbon Monoxide Alarm

Always Connected
Always Protected



10 A decade of protection

The 10-year sealed battery means no battery replacements for the life of the alarm and no low battery chirps in the middle of the night. This alarm was designed to last 10 years. Available in hardwired or battery versions.

Leveraging the install base

These alarms utilize unique bluetooth mesh to speak with each other. When one Onelink alarm goes off all interconnected alarms will sound as one. The hardwire version interconnects with all current BRK hardwire alarms, allowing users to upgrade gradually. Also compatible with select competitive smoke alarms.*

Sends push notifications

Sends notifications to your iOS device in the event of a smoke or CO emergency.

 Works with
Apple HomeKit

The world's first HomeKit-enabled Wi-Fi Smoke + CO Alarm. Privacy is built in and data is always encrypted.

* Visit www.firstalert.com/onelink/support for compatible smoke alarm models.

First Alert

Onelink™

Wi-Fi Smoke + Carbon Monoxide Alarm



Features

- Wi-Fi and Bluetooth connectivity
- 10 Year sealed battery or battery backup
- Apple HomeKit enabled
- Works with Apple iOS 9 or later. Not compatible with Android®.
- Free App to stay connected with alarms
- Speaks what and where danger is detected
- Interconnects with all current BRK/First Alert hardwired alarms
- Two versions available: AC10-500B (120V hardwired w/battery backup) & DC10-500B (battery powered)

Note: This product is intended for non-professional do it yourself installation. If you would like information about a professionally installed and monitored system, please contact First Alert Professional at 1-800-921-6025. First Alert Professional is not affiliated with BRK Brands, Inc.



Wi-Fi Safe

SKU #'s:
2096BD-500 (2.1 cu ft)
2092BD-500 (1.3 cu. ft)



LED Light Ring

Visual indication instantly tells you the state of your safe.



Red LED:
Motion has been detected.



Green LED:
Safe is unlocked.



White LED:
Safe is locked.

Easily lock and unlock your Wi-Fi connected and Bluetooth-enabled safe right from your iOS smartphone or tablet without the need for passcodes or keys. Customize settings, add personalized notifications, and grant remote access to friends and family, as well as monitor their activity, by conveniently connecting to the mobile app. Sleek new design with aluminum alloy handle and LED light that signals when safe is unlocked, locked or tampered with. No key pad and no dials = no forgotten passcodes. Your phone is your key. And never get locked out with emergency USB power boost backup when batteries have lost power.

Wireless Smoke, CO & Combo Alarms

BEDROOMS-
INSTALL WIRELESS
SMOKE ALARMS

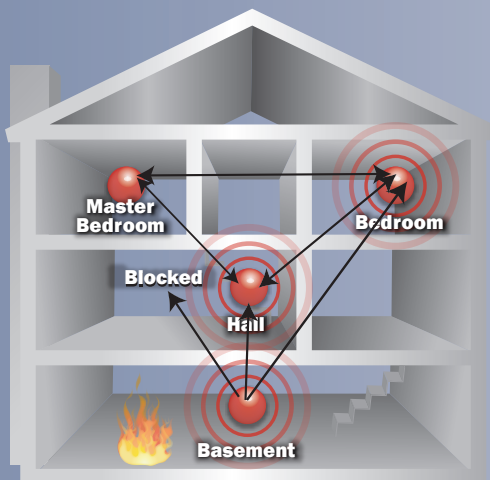
HALLWAYS-
INSTALL WIRELESS
SMOKE/CO
COMBO ALARM

Cost Effective Retrofit & Remodel Solutions

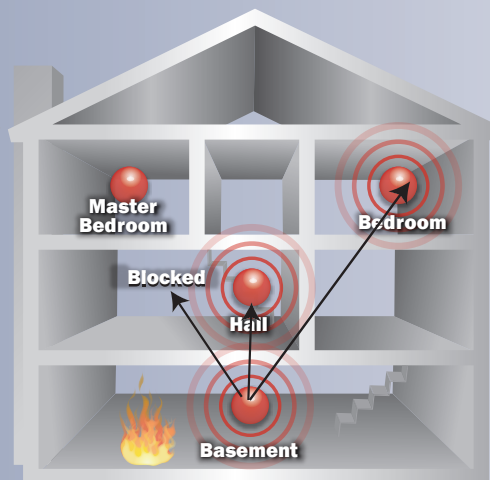
- Wireless interconnect technology eliminates the need to pull wires through existing walls
- Save an average of between \$150 - \$200** per alarm when compared to retrofitting hard-wired alarms in existing walls or ceilings
- Faster job turnaround - 4X more jobs completed increases your profits
- Photoelectric sensing technology saves maintenance calls with fewer nuisance alarms

Mesh Network Communication

Mesh Network Communication



Competitive Wireless
One-Way Communication



BRK Wireless Interconnect alarms operate on a “mesh network”; a 2-way communication format that sends, receives and then re-sends the alarm signals. If the initiating alarm signal is blocked from reaching one of the alarms, the mesh network communication reroutes and re-sends the signal via the other alarms as shown in the illustration. With competitive one-way wireless communication, only the initiating alarm sends a signal which may never be received, leaving the blocked alarm deadly silent.

**Note: Based on average retrofitting costs of time, material and labor to connect to existing alarm circuit, drywall repairs, painting, etc. Special cases that require conduit, wire mold, concrete drilling, etc. would add additional costs and increase savings. This product is intended for non-professional do it yourself installation. If you would like information about a professionally installed and monitored system, please contact First Alert Professional at 1-800-921-6025. First Alert Professional is not affiliated with BRK Brands, Inc.

Innovative Features

WIRELESS INTERCONNECT

Reliable and secure radio frequency communication between alarms. 915 MHz frequency with 65,000 security codes and 3 channel frequency hopping.

MESH NETWORK COMMUNICATION

2-way communication format that sends, receives and re-sends the alarm signals providing a more reliable network.

VOICE WARNING WITH LOCATION

Programmable with up to 11 locations (ex. "basement"). When alarm sounds (if programmed for basement), it will say, "Warning, Evacuate, Smoke in Basement". If other BRK Wireless Interconnect Voice Warning alarms are located throughout the house they will also signal, "Warning, Evacuate, Smoke in Basement".

PHOTOELECTRIC TECHNOLOGY

Helps reduce nuisance alarms, especially around kitchens and baths which are more prone to nuisance alarms from cooking smoke and shower steam.

OPTIPATH 360 TECHNOLOGY™

Patented technology provides 360 degrees of direct access to smoke sensor.

SPREAD SPECTRUM HORN TONE

Lower and varying horn frequency makes it easier for elderly with normal age related hearing loss to hear horn. Sweeps through the 2200 - 3400 Hz range.

LATCHING FEATURES

Alarm Latch: Easily identifies initiating alarm even after alarm condition has subsided. **Low Battery Latch:** Identifies which unit is in low battery condition. Both features activate for up to 15 minutes. (excludes SA520B).

SILENCE FEATURE

Silences unwanted alarms. Two silence features - Temporarily silence low battery chirp for up to 8 hours before replacing battery or silence unwanted alarm for several minutes.

SC0500B - WIRELESS BATTERY SMOKE/CO COMBO

BATTERY POWERED - PHOTO/CO COMBO

- 7 Year CO Sensor/End of Life signal
- Two AA Alkaline battery powered



SA511B - WIRELESS BATTERY SMOKE ALARM

BATTERY POWERED - PHOTO

- Two AA Alkaline battery powered



SA520B - BRIDGE UNIT - WIRELESS HARDWIRED SMOKE ALARM

120V AC WITH BATTERY BACKUP - PHOTO

- Two AA Alkaline battery backup



CO511B - BATTERY CO ALARM

BATTERY POWERED - ELECTROCHEMICAL

- 7 Year CO Sensor/End of Life signal
- Two AA Alkaline battery powered



Hardwired Smoke & Combo Alarms



9120B SERIES

120V AC WITH BATTERY BACKUP - ION

- Ionization smoke sensing technology
- 9V battery backup



Available SKU's:

9120B: 9V Carbon Zinc, 9120AB: 9V Alkaline, 9120LBL: 10YR 9V Lithium - Locked battery drawer, 9120B6CP: Bulk contractor 6-pack

7010B SERIES

120V AC WITH BATTERY BACKUP - PHOTO

- Photoelectric smoke sensing technology
- 9V battery backup



Available SKU's:

7010B: 9V Carbon Zinc, 7020B: escape light



3120B

120V AC WITH BATTERY BACKUP - ION & PHOTO

- Dual photoelectric and ionization smoke sensing technologies
- Two AA alkaline battery backup



Hardwired Alarms

BRK Hardwire Alarms offer the complete safety and security of the First Alert brand. The alarms are updated with state-of-the-art technology, and are designed for fast and easy installation. These alarms are virtually maintenance free for the entire alarm's life and meet all current building codes for residential fire alarm products as defined by the NFPA.

PHOTOELECTRIC, IONIZATION, PHOTO/STROBE COMBO OR SMOKE/CO COMBO 120V AC WITH BATTERY BACKUP

- Silence Feature
- Latching alarm indicator - remembers which unit initiated an alarm
- Smart Technology - helps reduce the number of nuisance alarms
- Perfect Mount - allows for easy alignment of alarm
- 10 Year CO sensor (CO and Photo/CO Combo alarms)/10 Year Warranty

ADDITIONAL FEATURES: PHOTO/STROBE COMBO AND SMART STROBE

- Bright 177 candela strobe light designed for hearing impaired residents
- Smart Strobe has separate flash patterns to distinguish between a smoke/heat or CO danger
- Meets the requirements of the ADA (Americans with Disabilities Act)
- 1Hz flash rate meets requirements for visual signaling devices



SC9120B SERIES

120V AC WITH BATTERY BACKUP - ION/CO COMBO

- Advanced electrochemical CO and ionization smoke sensing technologies
- 10 Year CO Sensor/End of Life signal
- 9V battery backup



Available SKU's:

SC9120B: 9V Alkaline,

SC9120LBL: 10YR 9V Lithium - Locked battery drawer



SC7010B SERIES

120V AC WITH BATTERY BACKUP - PHOTO/CO COMBO

- Voice Warning with Location - (cat. no. SC7010BV)
- Electrochemical CO and photoelectric smoke sensing technologies
- 10 Year CO Sensor/End of Life signal
- Two AA battery backup



Available SKU's:

SC7010B: Combo, SC7010BV: Combo w/Voice

Voice Warning!
WITH LOCATION



7010BSL

120V AC WITH BATTERY BACKUP -
PHOTO/STROBE COMBO

- Photoelectric smoke sensing technology
- Two AAA battery backup for smoke alarm.
(Note: will not power strobe light)



Hardwired

CO & Heat Alarms, Strobe Light



HD6135FB

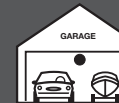
120V AC WITH BATTERY BACKUP - HEAT ALARM

- 135°F Fixed temperature and rate-of-rise thermistor heat sensor
- For applications not suitable for smoke alarms
- 9V battery backup

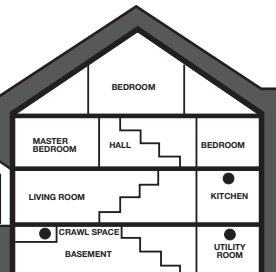


Understanding Rate of Rise

This allows the unit to sense a heat rise and alarm prior to reaching the fixed temperature. The alarm will sound when the microprocessor senses a temperature rise of a set number of degrees per minute. This enables a more rapid response to a potential fire.



● Heat Alarm



CO5120 SERIES

120V AC WITH BATTERY BACKUP - ELECTROCHEMICAL

- Advanced electrochemical CO sensing technology
- 10 Year CO Sensor/End of Life signal
- 9V battery backup
- LCD display - (cat. no. CO5120PDBN)



CO5120BN

CO5120PDBN

SL177

120V AC - SMART STROBE

- (see page 7 "Hardwired Alarms " section for details)





Plug-in CO & Gas Alarms

CARBON MONOXIDE AND EXPLOSIVE GAS 120V AC PLUG-IN WITH BATTERY BACKUP

- Advanced Electrochemical CO sensing technology
- Silence Feature
- CO615B features an LCD display and a convenient 6' line cord for multiple mounting positions

ADDITIONAL FEATURES: EXPLOSIVE GAS ALARM

- 3-way protection against natural (methane) gas, propane gas and carbon monoxide
- Convenient 6' line cord for multiple mounting positions

CO615B



CO600B & CO605B

CO600 SERIES

120V AC PLUG-IN WITH BATTERY BACKUP -
ELECTROCHEMICAL

- 7 Year CO Sensor/End of Life signal
- Battery Access: Rear panel: CO605B, front panel: CO615B



Available SKU's:

CO600B: no battery backup, CO605B: 9V Alkaline battery backup, CO615B: AA Alkaline battery backup



GC01B

120V AC PLUG-IN WITH BATTERY BACKUP -
EXPLOSIVE GAS & ELECTROCHEMICAL

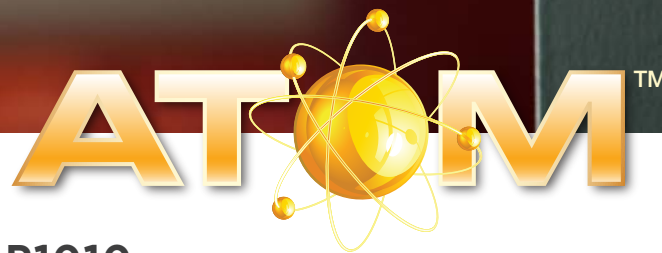
- Large display - clearly shows the hazard and level present
- 5 Year Explosive Gas & CO Sensors/End of Life signal
- 9V battery backup.



Battery

10YR

Sealed Alarms



Actual Size Approximately
(1-5/8" H x 1-7/8" Dia)

P1010

10YR SEALED BATTERY POWERED MICRO - PHOTO

- Advanced photoelectric micro technology
- Maximum protection - Fewer false alarms
- Easy installation - Smart product clip system



SA3210

10YR SEALED BATTERY POWERED -
ION & PHOTO COMBO

- Dual photoelectric and ionization smoke sensing technologies



SA350B

10YR SEALED BATTERY POWERED - ION

- Ionization smoke sensing technology



10YR Sealed Alarms

Because there are other things you'd rather think about

First Alert, America's # 1 Most Trusted Brand in Home Safety, offers various alarms within its 10-Year Sealed Battery Alarm series. A 10-Year Sealed Battery Alarm is a more convenient, intuitive device that is equipped with a sealed 10-year lithium power cell battery, eliminating the need for numerous battery replacements throughout the life of the alarm. These alarms meet the requirements of recent legislation enacted in several states and municipalities throughout the United States.

PHOTO, ION, PHOTO/ION COMBO, CO or PHOTO/CO COMBO

10YR SEALED BATTERY POWER

- Tamper proof design - prevents battery theft
- Silence Feature
- Smart Technology – helps reduce the number of nuisance alarms
- CO and Photo/CO Combo alarms feature advanced electrochemical CO sensing technology
- Smoke and Combo alarms feature either Photoelectric, Ionization or both smoke sensing technologies
- 10 Year End of Life signal/10 Year CO sensor (CO and Photo/CO Combo alarms)/10 Year Warranty

PRC710 SERIES

10YR SEALED BATTERY POWERED - PHOTO/CO COMBO

- Low profile slim design
- Voice warning with location (PRC710VB)



Available SKU's: PRC710VB: Voice,
PRC710B: Non-Voice

PR710B

10YR SEALED BATTERY POWERED - PHOTO

- Low profile slim design



CO710

10YR SEALED BATTERY POWERED - ELECTROCHEMICAL CO

- Large display - shows visual confirmation of CO levels



CO910 SERIES

10YR SEALED BATTERY POWERED - ELECTROCHEMICAL CO

- Low profile slim square design
- Voice Warning with Location (cat. no. CO910VB)



Available SKU's: CO910B: CO alarm,
CO910VB: CO alarm with Voice



CO710

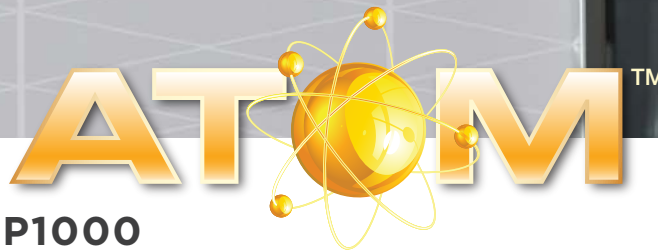


CO910B

CO910VB

Battery

Smoke, CO & Combo Alarms



P1000

BATTERY POWERED MICRO - PHOTO

- Advanced photoelectric micro technology
- Maximum protection - Fewer false alarms
- Easy installation - Smart product clip system
- Long life lithium battery powered



SA320B

BATTERY POWERED - ION & PHOTO COMBO

- Dual photoelectric and ionization smoke sensing technologies
- Two AA alkaline battery powered



PR700 SERIES

BATTERY POWERED - PHOTO

- Low profile slim design
- Photoelectric smoke sensing technology
- 9V battery powered



Available SKU's: PR700B: 9V Carbon Zinc, PR700AB: 9V Alkaline, PR700LB 9V Lithium



FG250 SERIES

BATTERY POWERED - ION

- Ionization smoke sensing technology
- RV approved (FG250AB & FG250LB)
- 9V battery powered



Available SKU's: FG250B: Carbon Zinc, FG250AB: Alkaline, FG250LB: Lithium

Battery Powered Alarms

Protect your properties from both fire and carbon monoxide related dangers with a complete line of First Alert Smoke, CO and Combination Alarms. First Alert® battery powered Smoke Alarms provide ultimate protection against fires. Our two-in-one technology in our Combo alarms deliver the same amount of protection as two separate devices in one design. First Alert Smoke/CO Combo alarms sound differentiated horn patterns that communicate the type of emergency, indicating a fire or carbon monoxide detection.

PHOTO, ION, PHOTO/ION COMBO, CO, PHOTO/CO COMBO AND ION/CO COMBO BATTERY POWERED

- Silence Feature
- Smart Technology - helps reduce the number of nuisance alarms
- CO and Combo alarms feature advanced electrochemical CO sensing technology
- Smoke and Combo alarms feature Photoelectric and or Ionization smoke sensing technologies
- 10 Year CO Sensor/End of Life signal (unless otherwise noted)/10 Year Warranty

PRC700 SERIES

BATTERY POWERED - PHOTO/CO COMBO

- Voice Warning with Location (PRC700VB).
- Advanced electrochemical CO and photoelectric smoke sensing technologies
- 10 Year CO Sensor/End of Life signal
- Two AA alkaline battery powered



Available SKU's: PRC700VB: Voice,
PRC700B: Non-Voice



ZCOMBO-G

BATTERY POWERED - PHOTO/CO COMBO

- Works with First Alert protocol enabled Z-Wave technology wireless hubs.
- 7 Year CO Sensor/End of Life signal
- Two AA battery powered



This product is intended for non-professional do it yourself installation. If you would like information about a professionally installed and monitored system, please contact First Alert Professional at 1-800-921-6025. First Alert Professional is not affiliated with BRK Brands, Inc.



SCO2 SERIES

BATTERY POWERED - ION/CO COMBO

- Advanced electrochemical CO and ionization smoke sensing technologies
- 10 Year CO Sensor/End of Life signal
- 9V alkaline battery powered



Available SKU's: SCO2B: Alkaline,
SCO2LB: Lithium



Battery

Smoke, CO & Combo Alarms



CO250 SERIES

BATTERY POWERED - ELECTROCHEMICAL CO

- Advanced electrochemical CO sensing technology
- 10 Year CO Sensor/End of Life signal
- 9V battery powered



Available SKU's: CO250B: Alkaline,
CO250LB: 5 year Lithium



CO250LBT

CO250 w/TAMPER PROOF BRACKET

- Advanced electrochemical CO sensing technology
- Tamper proof bracket and screw, tamper proof bit included.
- 10 Year CO Sensor/End of Life signal
- 5 year 9V lithium battery powered



CO400B/CO410B

BATTERY POWERED - ELECTROCHEMICAL CO

- Advanced electrochemical CO sensing technology
- Silence feature
- 9V battery powered
- 7 Year CO Sensor/End of Life signal
- CO410B: Same features as above plus or instead of
 - Large display - shows visual confirmation of CO levels
 - 2 AA battery powered



Other Miscellaneous



EL52-2/EL53W-2

ESCAPE LADDERS

- Strong steel construction with slip-resistant rungs
- Large hooks secure easily to widow sills
- DuPont Cordura™ nylon strapping
- Fully assembled and ready to use
- Tested to ASTM standards



Available SKU's: EL52-2 Two-story 14 foot long, EL53W-2 Three Story 24 foot long

PIR725

MOTION SENSING LIGHT SOCKET

- Installs in existing edison base light socket
- Senses movement in all directions (12 - foot range 360°)
- Works with incandescent bulbs up to 100 watts or compact fluorescent bulbs up to 50 watts



RM4

BRK RELAY

- 120-volt AC-powered
- Form-C contacts that switch between normally open and closed contacts
- Maximum contact rating: 120-volt AC and 30-volt DC; Resistive - 15 amps; Motor - 1/3 horsepower



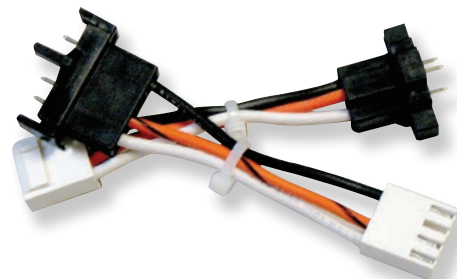
ADF-12/ADK-12

ADAPTOR PLUGS

- Easily connect competitive alarms without rewiring
- For use with select Firex® and Kidde® smoke alarms
- Perfect for retrofit applications



Available SKU's: ADK-12 Kidde® adaptor, ADF-12: Firex® adaptor



LEADERS IN RESIDENTIAL & MULTI-FAMILY ALARM TECHNOLOGY

BRK[®]

THE PROFESSIONAL STANDARD

©2016 BRK Brands Inc.
a Jarden Corporation Company (NYSE: JAH)
3901 Liberty Street Road, Aurora, IL 60504-8122
Customer Service: 800-275-2576 Tech Services: 800-323-9005
All rights reserved
First Alert is a registered trademark of the First Alert Trust
BRK is a registered trademark of BRK Brands, Inc.
www.brkelectronics.com
CM3265