

OEF-P, High-Bay Fixture Mount



- Applications up to 40 feet in height
- Coverage diameter of twice the mounting height (2MH)
- Built in power supply and relay
- Zero-Crossing Technology prolongs relay life by switching high-inrush equipment at close to zero power
- Compatible with electronic ballasts, incandescent lighting, or motor loads
- No minimum load required
- Direct installation to fixture; fits standard 1/2" knockout

Specifications:

Technology: PIR

Electrical Ratings:

Contacts: 800 VA @ 120 VAC Tungsten
800 VA @ 120 VAC Ballast
1200 VA @ 240/277 VAC Ballast

Input: 120/277 VAC +/- 10% 60Hz

Operating Environment:

- Temperature: 32°F to 104°F (0°C to 40°C)
- Relative humidity: less than 95%, non-condensing
- For indoor use only

Size: 3.08"H X 3.08"W X 1.70"D
(7.83cm x 7.83cm x 4.32cm)

Warranty: Five year

FCC Compliant
UL Listed



Catalog #	Type
Project	
Comments	
Prepared by	Date



Overview

The OEF-P sensors control fluorescent fixtures and can be mounted directly to the fixtures via a 1/2" knock out. The nipple on the sensor attaches with a lock nut through a 1/2" knockout on the fixture or on a junction box and all wiring passes through the same knockout.

Operation

The OEF-P, High-bay sensors are designed to detect motion from a heat-emitting source (such as a person entering a space) within its field-of-view and automatically switching lights ON and OFF. Lights will remain ON until no motion is detected and a preset time delay has expired. If no motion is detected during the time delay, the relay is opened, turning the load off. No adjustments are needed at installation. After the installer test, the sensor will automatically set itself to the default 10-minute time delay. At installation, the sensor will scan the coverage area to determine the optimum sensitivity setting.

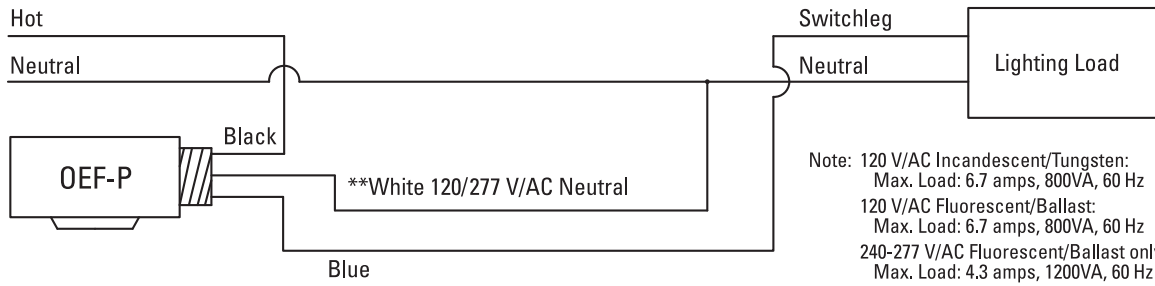
Photosensor can be used in applications where significant daylight is available and daylighting control is desired.

Applications

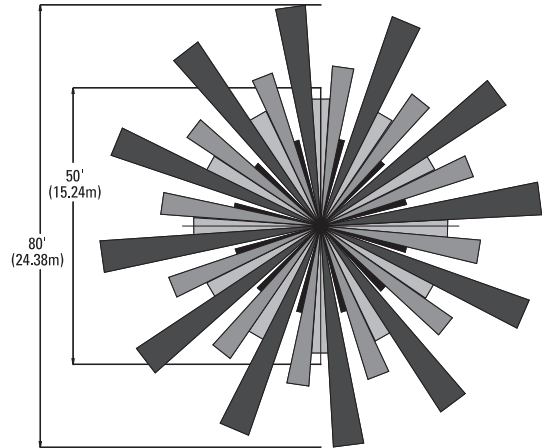
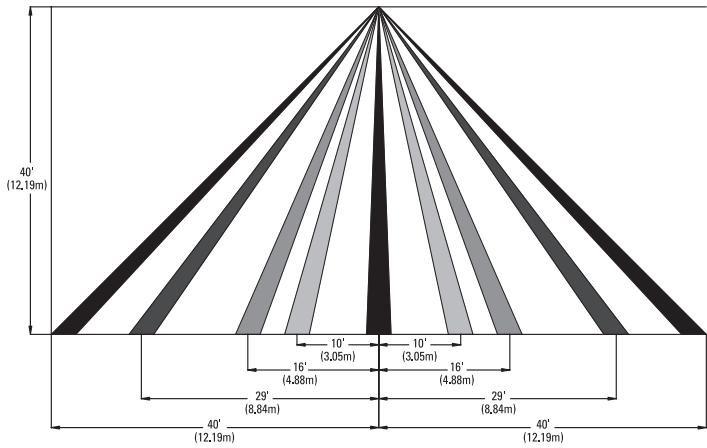
warehouses	garages
manufacturing	high ceilings

Ordering

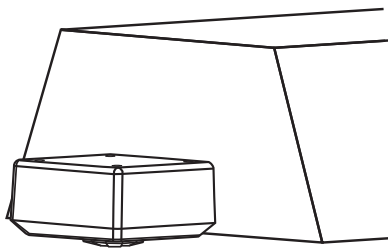
Catalog #	Mounting	Photocell	Wire Lead Length
OEF-P-2MH0-MV-S	Side	Yes	36"



Coverage



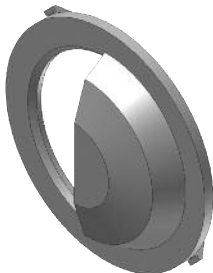
Mounting



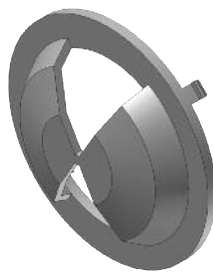
OEF-P-2MH0-MV-S

Coverage Hoods

180 Degree



Aisle



Custom

