

Weatherproof FS Outlet Box

For installing devices on all siding types. Paintable, UV rated plastic for long outdoor life.



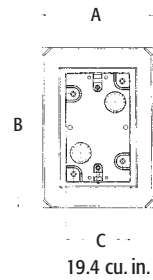
CATALOG NUMBER	UPC/DCI/NAED MFG #018997	SIDING TYPE	UNIT PKG	STD PKG	DIM A	DIM B	DIM C
FS8091F	17304	All Types	10	10	4.511	6.558	2.656

Add suffix "GC" to Catalog # when ordering in Canada, for example FS8091FGC.

PATENTED.



Costs Less Than Our 8081F and 8091F Siding Boxes.



EASY TO INSTALL BEFORE or AFTER THE SIDING!

Installation Instructions

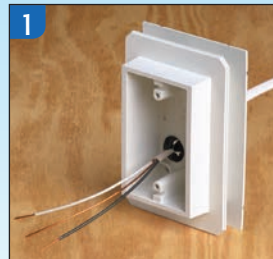
FEATURES AND BENEFITS

- Costs less...one-piece design
- For use with all single-gang devices, including GFCIs
- Installs before or after siding is installed. Remove break-away flanges for installation on previously sided structures.
- Can be installed vertically or horizontally
- For all types of siding
- Textured, paintable surface.
- UL listed

BEFORE siding is up...

1. Disconnect electrical power. Remove knockout. Insert cable connector. Pull NM cable through connector.
2. Attach outlet box to substrate with (2) screws.
3. Install device, FS8091F works with all single gang devices.

Complete installation with code required weatherproof while-in-use cover.



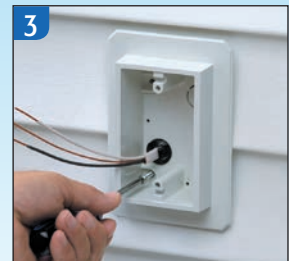
GFCI



Standard Outlet

AFTER siding is up...

1. Disconnect electrical power. Cut hole in siding.
2. Break flanges off the back of the FS8091F. Remove knockout. Insert cable connector in KO, then pull NM cable through connector.
3. Attach outlet box to substrate with (2) screws.
4. Install single gang device (standard or GFCI). Complete installation with code required weatherproof while-in-use cover.



Standard Outlet



GFCI