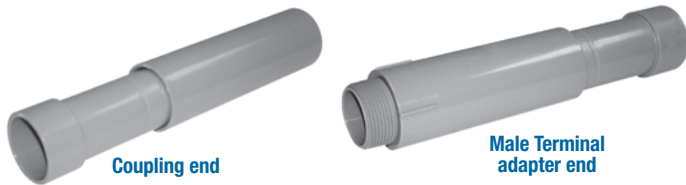


Fittings and Accessories

Expansion Fittings*

E945 Series expansion fittings are designed to compensate for length changes due to temperature variations in exposed conduit runs.

- Exclusive Molded in Mid-point indicator on the piston
- Exclusive 2 in. Expansion Fitting with an 8 in. travel distance
- Two-piece molded design with lubricated seals for easier movement for the life of the product
- Ridges on the fitting for easier installation (Sizes 2 in. through 6 in. only)
- Male terminal Adapter End design (1/2 in. – 2 in. NPT Threads and 2-1/2 in. – 6 in. NPSC Threads)
- Two O-Rings to prevent leakage
- Can be installed vertically or horizontally



Coupling End Cat. No.	Male Terminal Adapter End Cat. No.	Size (in.)	Std. Ctn. Qty.	Travel Length (in.)
E945D	E945DX	1/2	20	4
E945E	E945EX	3/4	15	4
E945F	E945FX	1	10	4
E945G	E945GX	1-1/4	5	4
E945H	E945HX	1-1/2	5	4
E945J	E945JX	2	15	8
E945K	E945KX	2-1/2	10	8
E945L	E945LX	3	10	8
E945M	E945MX	3-1/2	5	8
E945N	E945NX	4	5	8
E945P	E945PX	5	1	8
E945R	E945RX	6	1	8

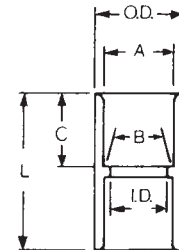
* Please refer to page I21 for additional information.

Standard Couplings

All socket fittings should be attached using Carlton solvent cement. Using Carlton fittings with Carlton nonmetallic conduit insures system integrity.



Socket type for joining nonmetallic conduit.



Cat. No.	Size (in.)	Std. Ctn. Qty.	A		I.D. (in.)	O.D. (in.)	C	L
			Typical (in.)					
CE940DR-CTN	1/2	75	0.852	0.836	0.728	1-7/64	11-16	1-1/2
CE940ER-CTN	3/4	45	1.064	1.046	0.840	1-5/16	3/4	1-5/8
CE940F-UPC	1	50	1.330	1.310	1.210	1-5/8	15/16	2
E940G	1-1/4	30	1.677	1.655	1.535	1-63/64	1	2-1/8
E940H	1-1/2	25	1.918	1.894	1.755	2-15/64	1-1/8	2-3/8
E940J	2	30	2.393	2.369	2.190	2-47/64	1-3/16	2-1/2
E940K	2-1/2	20	2.890	2.868	2.688	3-5/16	1-33/64	3-3/16
E940L	3	25	3.515	3.492	3.375	3-31/32	1-3/4	3-13/32
E940M	3-1/2	20	4.015	3.992	3.780	4-9/16	1-3/4	3-5/8
E940N	4	15	4.515	4.491	4.265	5-3/32	1-25/32	3-3/4
E940P	5	8	5.593	5.553	5.097	6-1/4	1-5/16	4-1/16
E940R	6	5	6.658	6.614	6.115	7-1/2	2-3/16	4-5/8

* Please refer to page I21 for additional information.

Short Expansion Couplings*

(Expands to a maximum of 2 in.)



Cat. No.	Size (in.)	Std. Ctn. Qty.
E955D	1/2	40
E955E	3/4	40
E955F	1	25
E955G	1-1/4	15
E955H	1-1/2	10
E955J	2	6

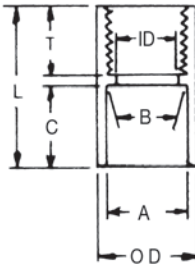
* Please refer to page I21 for additional information.

Fittings and Accessories

Female Adapters



For adapting nonmetallic conduits to threaded fittings, metallic systems. Female threads on one end, socket end on other.

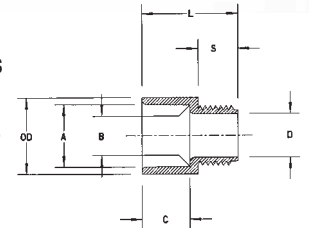


Cat. No.	Size (in.)	Std. Ctn. Qty.	A	B	Min. I.D. (in.)	Max. O.D. (in.)	C	T	L
			Typical (in.)						
E942D	1/2	150	0.852	0.836	0.620	1-7/64	11/16	3/4	1-9/16
E942E	3/4	100	1.064	1.046	0.822	1-5/16	13/16	3/4	1-5/8
E942F	1	50	1.330	1.310	1.046	1-5/8	15/16	7/8	1-15/16
E942G	1-1/4	30	1.677	1.655	1.377	1-63/64	1	7/8	2
E942H	1-1/2	25	1.918	1.894	1.607	2-5/32	1-1/8	7/8	2-7/32
E942J	2	30	2.393	2.369	2.064	2-47/64	1-3/16	1	2-5/16
E942K	2-1/2	20	2.890	2.868	2.450	3-11/32	1-5/8	1-1/8	2-15/16
E942L	3	25	3.515	3.492	3.000	3-31/32	1-3/4	1-1/8	3-1/16
E942M	3-1/2	20	4.015	3.992	3.500	4-1/2	1-7/8	1-1/8	3-1/4
E942N	4	15	4.515	4.491	4.000	5-1/64	1-3/4	1-1/16	3-13/64
E942P	5	8	5.593	5.553	5.047	6-1/4	1-15/16	1-1/16	3-3/16
E942R	6	6	6.658	6.614	6.055	7-1/4	2-1/8	1-1/16	3-3/8

Male Terminal Adapters



For adapting nonmetallic conduits to boxes threaded fittings, metallic systems. Male threads on one end, socket end on other.

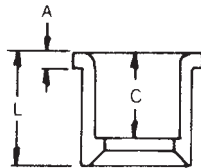


Cat. No.	Size (in.)	Std. Ctn. Qty.	A	B	Min. D (in.)	Max. O.D. (in.)	C	S	L
			Typical (in.)						
E943D	1/2	150	0.852	0.836	0.594	1.042	0.652	0.545	1.310
E943E	3/4	100	1.064	1.046	0.793	1.290	0.809	0.553	1.470
E943F	1	50	1.330	1.310	1.025	1.580	0.965	0.812	1.902
E943G	1-1/4	30	1.677	1.655	1.345	1.973	1.208	0.816	1.986
E943H	1-1/2	25	1.918	1.894	1.574	2.188	1.155	0.802	2.105
E943J	2	30	2.393	2.369	1.998	2.713	1.145	0.825	2.093
E943K	2-1/2	20	2.890	2.868	2.400	3.290	1.490	0.812	2.480
E943L	3	25	3.515	3.492	2.989	3.965	1.643	0.797	2.660
E943M	3-1/2	20	4.015	3.992	3.405	4.515	1.720	0.802	2.740
E943N	4	15	4.515	4.491	3.895	5.065	1.788	0.733	2.830
E943P	5	8	5.593	5.553	4.900	6.104	1.935	0.990	3.200
E943R	6	6	6.658	6.614	5.900	7.288	2.128	0.985	3.410

Reducer Bushings



For connecting different sizes of conduit. Bell x Spigot.

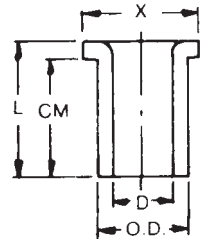


Cat. No.	Size (in.)	Std. Ctn. Qty.	L	A	C
			Typical (in.)		
E950ED	3/4 x 1/2	100	1-5/32	13/64	1-1/32
E950FD-CAR	1 x 1/2	25	1-11/32	3/16	57/64
E950FE	1 x 3/4	100	1-11/32	3/16	1-1/64
E950GE-CAR	1-1/4 x 3/4	10	1-15/32	3/16	1-1/64
E950GF	1-1/4 x 1	50	1-15/32	3/16	1-9/64
E950HF-CAR	1-1/2 x 1	10	1-19/32	3/16	1-9/64
E950HG-CAR	1-1/2 x 1-1/4	10	1-19/32	3/16	1-17/64
E950JG-CAR	2 x 1-1/4	10	1-3/4	7/32	1-17/64
E950JH-CAR	2 x 1-1/2	10	1-3/4	7/32	1-25/64
E950KJ-CAR	2-1/2 x 2	10	2-5/32	3/8	1-27/64
E950LJ-CAR	3 x 2	10	2-1/8	1/4	1-7/8
E950LK	3 x 2-1/2	25	1-15/16	1/4	1-11/16
E950NL	4 x 3	25	2-3/4	5/16	1-15/16

Box Adapters for Enclosures



Adapts nonmetallic conduit to all electrical enclosures by inserting adapter through knockout and cementing into Carlton couplings.



Cat. No.	Size (in.)	Std. Ctn. Qty.	Min. D (in.)	O.D. Typical (in.)	Max. X (in.)	CM	L
						Typical (in.)	
E996D	1/2	100	0.662	0.840	1-7/64	23/32	27/32
E996E	3/4	100	0.824	1.050	1-21/64	25/32	29/32
E996F	1	100	1.049	1.315	1-5/8	61/64	1-3/32
E996G	1-1/4	50	1.380	1.660	1-31/32	1-1/16	1-1/4
E996H	1-1/2	50	1.610	1.900	2-13/64	1-3/16	1-3/8
E996J	2	25	2.067	2.375	2-29/32	1-1/4	1-7/16
E996K	2-1/2	15	2.469	2.875	3-7/16	1-7/8	1-15/16
E996L	3	20	3.068	3.500	4-1/8	2	2-1/16
E996N	4	10	4.026	4.500	5-1/8	2-1/2	2-1/4

Threaded Adapters



Cat. No.	Size (in.)	Std. Ctn. Qty.
E9842D 1	1/2	25
E9842E 2	3/4	25

1 Fits 3/4 in. sockets
2 Fits 1 in. sockets

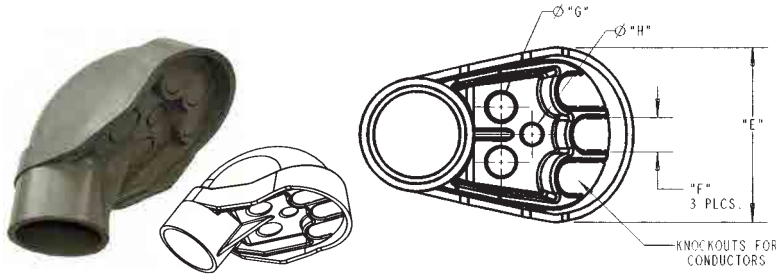
Plugs with Pull Tabs (Polyethylene)



Cat. No.	Size (in.)	Std. Ctn. Qty.	Std. Ctn. Wt. (lb.)
P258JT	2	60	3
P258LT	3	30	3
P258NT	4	48	8
P258PT	5	30	6
P258RT	6	30	9

Fittings and Accessories

Service Entrance Caps



Cat. No.	Size (in.)	Std. Ctn. Qty.	Dimensions (in.)			
			E	F	G	H
E998D	1/2	5	1.76	0.45	0.45	—
E998E	3/4	20	1.76	0.45	0.45	—
E998F	1	15	2.26	0.59	0.58	—
E998G	1-1/4	20	3.52	0.74	0.71	0.50
E998H	1-1/2	10	3.52	0.74	0.71	0.50
E998J	2	5	4.26	0.83	0.78	0.56
E998K-UPC	2-1/2	2	7.47	1.70	1.31	1.00
E998L	3	2	7.47	1.70	1.31	1.00
E998N	4	2	10.45	2.25	1.88	1.31

Meter Offset



Cat. No.	Size (in.)	Std. Ctn. Qty.	Offset (in.)	A (in.)
E995G	1-1/4	15	0.758	4.230
E995J	2	8	0.684	4.270

Offset



Cat. No.	Size (in.)	Std. Ctn. Qty.	Std. Ctn. Wt. (lb.)
E994D	1/2	25	3
E994E	3/4	25	3
E994F	1	50	12

End Caps



Cat. No.	Size (in.)	Std. Ctn. Qty.	Std. Ctn. Wt. (lb.)
E958D	1/2	100	3
E958E	3/4	100	4
E958F	1	75	5
E958G	1-1/4	40	4
E958H	1-1/2	30	4
E958J	2	25	5
E958K	2-1/2	10	4
E958L	3	10	5
E958N	4	5	17
E958P	5	5	11
E958R	6	5	13

End Bells



Cat. No.	Size (in.)	Std. Ctn. Qty.	Std. Ctn. Wt. (lb.)
E997F	1	50	2.6
E997G	1-1/4	35	2.5
E997H	1-1/2	30	2.5
E997J	2	40	5.0
E997K	2-1/2	30	2
E997L	3	50	10
E997M	3-1/2	40	11
E997N	4	30	16
E997P	5	15	8
E997R	6	10	7
E997T	8	3	15

Meter Hubs



Cat. No.	Size (in.)	Std. Ctn. Qty.	Std. Ctn. Wt. (lb.)
E991G	1-1/4	20	3.8
E991G-UPC	1-1/4	12	2.3
E991H	1-1/2	25	8.0
E991J	2	6	1.0
E991J-UPC	2	12	2.0

Fittings and Accessories

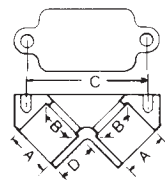
Flat Sealing Washer

Where a waterproof termination is required into any enclosure (metallic or nonmetallic), install the neoprene washer over the threads of a terminal adapter before inserting into the enclosure. Use a standard locknut or threaded bushing to secure the assembly.



Cat. No.	Size (in.)	Std. Ctn. Qty.
E943DW	1/2	125
E943EW	3/4	125
E943FW	1	100
E943GW	1-1/4	50
E943HW	1-1/2	50
E943JW	2	25

Access Pull Elbows

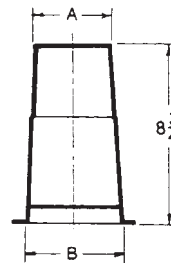


Cat. No.	Size (in.)	Std. Ctn. Qty.	Typical (in.)			
			A	B	C	D
E990D	1/2	75	0.852	0.836	2.187	0.718
E990DR-CAR	1/2	25	0.852	0.836	2.187	0.718
E990E	3/4	50	1.064	1.046	2.531	0.781

Gasket included

Holform™ Concrete Sleeves

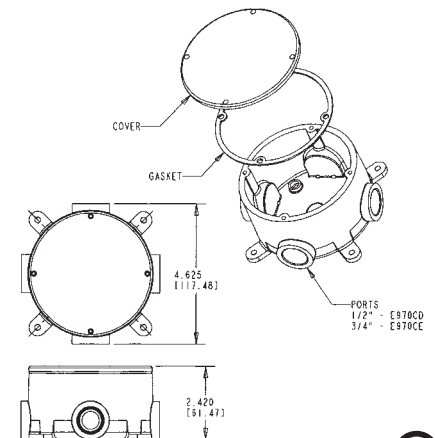
HOLFORM™ nonmetallic concrete sleeve forms are the easy way to form holes in concrete. They install in seconds with nails, screws or staples and are easily removed. Concrete will not adhere to them. HOLFORM™ are adjustable to any slab thickness. (Not CSA applicable)



Cat. No.	Min. O.D. A (in.)	B (in.)	Std. Ctn. Qty.	Std. Ctn. Wt. (lb.)
E92CSH	1-1/2	1-3/4	20	3
E92CSJ	2	2-13/32	25	6
E92CSL	3	3-13/32	25	8
E92CSN	4	4-13/32	18	8
E92CSP	5	5-13/32	15	8
E92CSR	6	6-13/32	12	8

Conduit Bodies Type X with Cover

Four knockout type socket openings, 90° spacing. Available with 1/2 in. or 3/4 in. socket outlets. Includes cover and gasket.



Cat. No.	Size (in.)	Vol. Cu. (in.)	Std. Ctn. Qty.
CE970CDE	1/2	15.16	15
E970CE	3/4	15.16	15

Supplied with 4 stainless steel cover screws. Diameter 4-1/8 in., Thickness 1/4 in. Not designed for use with wiring devices or light fixtures.