

WALL PLATES & INSERTS

TELEPHONE AND DATA Keystone Inserts



WP3475-WH*



WP3476-WH



WP346A-WH



WP3450-WH*



WP3460-WH



WP3458-WH



WP3451-WH



WP3425-WH



WP3550-WH



WP3560-WH

* Available in white, light almond, and blue in packs of 50

PART NO.	DESCRIPTION
WP3475-XX	Cat 5e Quick Connect RJ45 Keystone Connector Colors: BE, BK, BR, GY, GN, IV, LA, OR, RE, WH, YE
WP3476-XX	Cat 6 Quick Connect RJ45 Keystone Connector Colors: BE, BK, BR, GY, IV, LA, OR, RE, WH
WP346A-XX	Cat 6a Quick Connect RJ45 Keystone Connector Colors: BE, BK, BR, GY, GN, IV, LA, OR, RE, WH, YE ... TERMINATE ALL WIRES AT ONCE USING THE AC3400 PUNCH & GO TOOL WITH ANY QUICK CONNECT INSERT
WP3450-XX (KS58ABXX)†	Cat 5e RJ45 Keystone Connector Colors: BE (BL), BK, BR, GY (GRY), IV (I), LA, OR, RE (RED), WH (WH)
WP3460-XX (KS68ABXX)†	Cat 6 RJ45 Keystone Connector Colors: BE (BL), BK, BR, GY (GRY), IV (I), LA, OR, RE (RED), WH (WH)
WP3458-XX	Cat 5e Keyed RJ45 Keystone Connector Colors: BK, BR, IV, LA, WH
WP3451-XX (KS888XX)	Cat 5e RJ45 Keystone Coupler Colors: BK, WH (W)
WP3425-XX (KS6UXX)†	RJ25 6P6C Keystone Connector Colors: BK, BR, IV (I), LA, WH (W)
WP3550-XX	Snap & Go Cat 5e Keystone Connector Colors: BE, BK, BR, GY, IV, LA, OR, RE, WH
WP3560-XX	Snap & Go Cat 6 Keystone Connector Colors: BE, BK, BR, GY, IV, LA, OR, RE, WH

VIDEO INSERTS



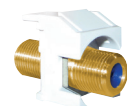
WP3479-WH*



WP3480-WH



WP3481-WH*



WP3482-WH



WP1234-WH



WP3455-WH



KSBNCW



KSSVW

*Available in packs of 50.

PART NO.	DESCRIPTION
WP3479-XX	Non-Recessed Coax Keystone F Connector (1 GHz) 50 Count Bulk Pack in WH or LA (WP3479-XX-50)
WP3480-XX	Recessed Gold F Connector (3GHz)
WP3481-XX (KSFFXX)	Recessed Nickle F Connector (3GHz) 50 Count Bulk Pack in WH (WP3481-WH-50)
WP3482-XX (KSFFSTXX)	Recessed Self-Terminating Keystone F Connector (1 GHz)
WP1234-XX	HDMI Keystone Insert/Coupler
WP3455-XX (KSBL10XX)†	Blank Keystone Insert Colors: BK, BR, IV (I), LA, WH (W)
KSBNCXX	Keystone BNC-to-BNC Connector
KSSVXX	Keystone S-Video-to-110 Termination Colors: I, LA, W

COLOR OPTIONS

