

DTD LED™

led dusk to dawn

Comparable to 70 – 250W PSMH

2170 Lumens • 30W

2860 Lumens • 35W

6550 Lumens • 70W





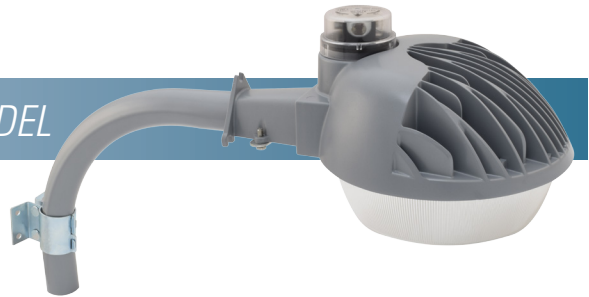
Rugged, Reliable Performance

Ideal for use in security, driveway, parking, walkway, stair, work area, and other utility applications

Simkar's LED Dusk-to-Dawn fixtures are built to withstand rugged outdoor environments and operate in all weather conditions while providing bright, reliable

light. With a 50,000 hour operating life (L70), our LED DTD Luminaires will perform for many years providing energy savings with excellent performance.

Very High Output *FLAGSHIP MODEL* DTDHOLE70



- Consumes 65W; up to 75% energy savings vs. traditional HID sources
- Light output 6545 lumens; replacing up to 250W PSMH
- 50,000 hour operating life (L70)
- 5000K color temperature, 70 CRI (typical)

- "Instant on" operation after power interruption
- C-UL-US listed wet location
- DesignLights™ Consortium Qualified

HOUSING Rugged die-cast aluminum housing with powder coat gray finish. Heat dissipating fins provided for increased surface area for superior thermal management. Internal slip fitter for wall or pole mount.

aluminum plate for cooler fixture operation and longer life. The DTDHOLE70 is designed to operate in temperatures of -40°F (-40°C) to 113°F (40°C).

LEDS 50,000 hour operating life (L70). Delivered light output of 6545 lumens (65.91W), 5000K color temperature, >70 CRI, typical. LEDs are LM-80 tested.

ACCESS / WIRING Through arm wiring enabling mounting directly to the wall or via included 24" (12" standoff) aluminum arm.

OPTICS Primary optic is a high temperature, total internal reflection (TIR) glass positioned directly over a LED chip on board (COB) array and mechanically secured via a trim ring. Secondary aluminum reflector. Open polycarbonate refractor ring provides a traditional look and is also removable. Produces an 80 degree beam spread, type V distribution. Full cut-off reduces light trespass.

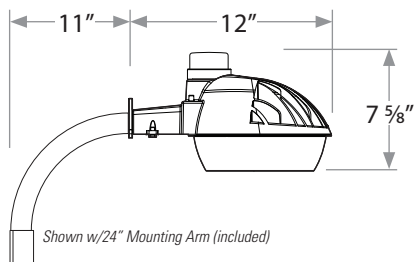
MOUNTING Direct surface mount using 1/4" slots via lag bolts (included), with standard 1-5/8" to 2 5/8" diameter pole mount, or included 24" (12" standoff) aluminum arm.

PHOTOCELL Replaceable 120V twist-lock photocell included.

ELECTRICAL Power supply is 120-277V, 0-10V dimmable, power factor >0.9, with output current of 1600mA. Operation is 120V only when used with the included 120V twist lock photocell. Integral 6kV surge protection. Power supply is mounted directly to heavy gauge

LISTINGS C-UL-US Listed wet location. DesignLights™ Consortium qualified.

WARRANTY 5 year limited warranty.



HORIZONTAL FOOTCANDLES

		Mounting Height			
		10'	15'	20'	25'
Distance	5'	30	15	10	6
	10'	2	8	7	5
	15'	.1	.5	3	2
	20'	.05	.1	.3	1.5

High Output

DTDHOLED35

- Consumes 37W, up to 80% energy savings vs. traditional HID sources
- Light output 2858 lumens, replacing up to 175W PSMH
- 50,000 hour operating life (L70)
- 4100K color temperature, 80 CRI (typical)
- "Instant on" operation after power interruption
- C-UL-US listed wet location
- DesignLights™ Consortium Qualified



HOUSING Rugged die-cast aluminum housing with powder coat gray finish. Die-cast heat dissipating fins. Internal slip fitter.

LEDS 50,000 hour operating life (L70). Delivered light output of 2858 lumens (31.4W), 4100K, >80 CRI. LEDs are LM-80 tested.

OPTICS Enclosed prismatic acrylic lens. Use with full cutoff shield accessory to meet Dark Sky requirements.

ELECTRICAL Power supply is 120-277V, power factor >0.9, with output current of 930mA. Operation is 120V only when used with the included 120V twist lock photocell. The DTDHOLED35 is designed to operate in temperatures of -22°F (-30°C) to 113°F (40°C).

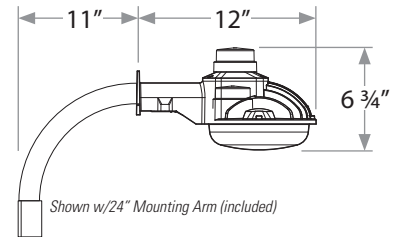
ACCESS / WIRING Through arm wiring enabling mounting directly to the wall or via included 24" arm.

MOUNTING Direct surface mount or with standard 1-5/8" diameter 24" (12" standoff) arm (included).

PHOTOCELL Replaceable 120V twist-lock photocell included.

LISTINGS C-UL-US Listed wet location. DLC DesignLights™ Consortium qualified.

WARRANTY 5 year limited warranty.



HORIZONTAL FOOTCANDLES

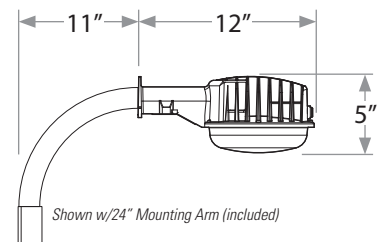
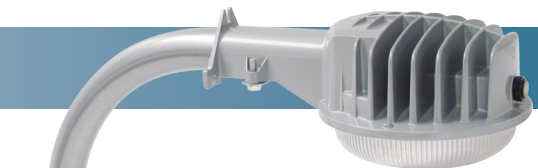
Without Shroud

		Mounting Height		
		10'	15'	20'
Distance	5'	7	4	2.5
	10'	3	3	1.5
	15'	.8	1	1
	20'	.3	.3	.6

Standard Output

DTDLED30

- Consumes 29W; up to 67% energy savings vs HID
- Delivered light output of 2168 lumens (replaces up to 70W PSMH)
- 50,000 hour operating life (L70)
- 4100K color temperature, 80 CRI (typical)
- "Instant on" operation after power interruption
- C-UL-US listed wet location



HOUSING Rugged die-cast aluminum housing with powder coat gray finish. Cast heat dissipating fins. Internal slip fitter.

LEDS 50,000 hour operating life (L70). Delivered light output up to 2168 lumens (28.8W), 4100K, 80 CRI. LEDs are LM-80 tested.

ELECTRICAL Fully wired 120V high efficiency power supply. Power factor >0.9. The DTDLED30 is designed to operate in temperatures of -22°F (-30°C) to 113°F (40°C).

ACCESS / WIRING Through arm wiring enabling mounting directly to the wall or through 24" arm (included).

MOUNTING Direct surface mount or 1-5/8" diameter 24" (12" standoff) arm (included).

PHOTOCELL 120V Button photocell included.

LISTINGS C-UL-US Listed wet location.

WARRANTY 5 year limited warranty.

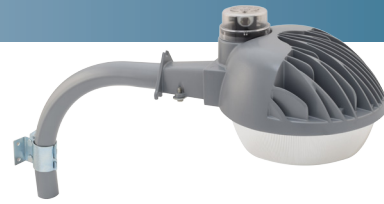
HORIZONTAL FOOTCANDLES

With Shroud

		Mounting Height	
		10'	15'
Distance	5'	3	1.5
	10'	1	1
	15'	.7	.4
	20'	.3	.3

Consult DesignLights™ Consortium website for current qualified products.

DTDHOLED70 Very High Output LED Dusk to Dawn Configuration



SERIES	INPUT POWER*
DTDHOLED	70 = 70W

* Nominal. See performance data for actual input power.

Performance Data

Model	Input Power	Efficacy (lm/W)	Light Output*	Mounting Ht.**	Equivalent HID**	Operating Temperature
DTDHOLED70	65.9W	99.3	6545 lm	Up to 25'	Up to 250W PSMH	-40°F (-40°C) to 113°F (45°C)

* Delivered lumens

** Consult a lighting engineer to meet specific requirements

DTDHOLED35 High Output LED Dusk to Dawn Configuration



SERIES	INPUT POWER*	ACCESSORIES
DTDHOLED	35 = 35W	S = Full cut-off shield

* Nominal. See performance data for actual input power.

Performance Data

Model	Input Power	Efficacy (lm/W)	Light Output*	Mounting Ht.**	Equivalent HID**	Operating Temperature
DTDHOLED35	37.4W	76.4	2858 lm	Up to 20'	Up to 175W PSMH	-22°F (-30°C) to 104°F (40°C)
DTDHOLED35S	37.4W	75.1	2807 lm	Up to 20'	Up to 175W PSMH	-22°F (-30°C) to 104°F (40°C)

* Delivered lumens

** Consult a lighting engineer to meet specific requirements

DTDLED30 Standard Output LED Dusk to Dawn Configuration



SERIES	INPUT POWER*	ACCESSORIES
DTDLED	30 = 30W	S = Full cut-off shield

* Nominal. See performance data for actual input power.

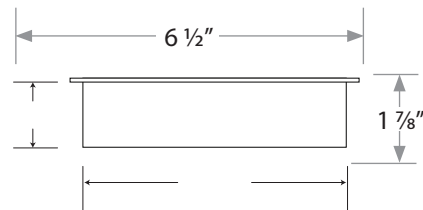
Performance Data

Model	Input Power	Efficacy (lm/W)	Light Output*	Mounting Ht.**	Equivalent HID**	Operating Temperature
DTDLED30	28.8W	75.1	2168 lm	Up to 15'	Up to 70W PSMH	-22°F (-30°C) to 104°F (40°C)
DTDLED30S	28.8W	68.2	1971 lm	Up to 15'	Up to 70W PSMH	-22°F (-30°C) to 104°F (40°C)

* Delivered lumens

** Consult a lighting engineer to meet specific requirements

For full cutoff distribution, the 30W and 35W models offer an optional full cutoff shield. The shield is designed to install easily and provide greatly reduced glare, light trespass, and light pollution. The shield is ideal for residential areas as well as rural, industrial, and other areas where limiting horizontal light and glare are desired or required.



Full cut-off shield Accessory (DTDLED30 and DTDHOLED35 only)

