

# ACCESS CONTROL CABLE

# ACCESS CONTROL CABLE

# ELECTRONIC CABLE RISER RATED

# SECURITY, SOUND & ELECTRONIC CABLE

RISER ACCESS CONTROL										
TWC PART NUMBER	SW PART NUMBER	DESCRIPTION	AWG	# COND/ # PRS	NOM. DIAM. (inch)	PACKAGING			JACKET COLOR	UL/ NEC®
						TYPE	LENGTH	lbs/1000 ft		
For use with all access control security devices (except those in plenums).										
H90503.1A	57792201	ACC-CTRL 22/3P(OAS)+18/4C+22/2C+22/4C CMR YLW	MULTI	MULTI	0.555	REELS	1000'	112	YELLOW	CMR/ CL3R
H91765.1A	57792301	ACC-CTRL 22/3P(OAS)+18/4C(OAS)+22/2C(OAS) +22/4C(OAS) CMR YLW	MULTI	MULTI	0.565	REELS	1000'	128	YELLOW	CMR/ CL3R

PLENUM ACCESS CONTROL										
TWC PART NUMBER	SW PART NUMBER	DESCRIPTION	AWG	# COND/ # PRS	NOM. DIAM. (inch)	PACKAGING			JACKET COLOR	UL/ NEC®
						TYPE	LENGTH	lbs/1000 ft		
For use with all access control security devices.										
H91601.1A	57792501	ACC-CTRL 22/4C(OAS)+22/3P(OAS)+18/4C(OAS) +22/2C(OAS) CMP YLW	MULTI	MULTI	0.492	REELS	1000'	102	YELLOW	CMP/ CL3P
H91602.1A	57787601	ACC-CTRL 22/4C+22/3P(OAS)+18/4C+22/2C CMP YLW	MULTI	MULTI	0.492	REELS	1000'	95	YELLOW	CMP/ CL3P

# SECURITY, SOUND & ELECTRONIC CABLES

# BURGLAR ALARM WIRE

BURGLAR ALARM WIRE - STRANDED										
TWC PART NUMBER	SW PART NUMBER	DESCRIPTION	AWG	# COND	NOM. DIAM. (inch)	PACKAGING			JACKET COLOR	UL/NEC®
						TYPE	LENGTH	lbs/1000 ft		
Burglar alarm, public address systems, intercoms, telephone stations, speakers, instrumentation & control, sunlight resistant. For power-limited circuits use except those in plenums.										
R20004.1A	57564502	22/2C STR BC N/S GRY	22	2	0.130	REELS	1000'	10	GRAY	CMR/CL3R
R20004.4B	57564601	22/2C STR BC N/S WHT	22	2	0.130	REELEX	1000'	10	WHITE	CMR/CL3R
R20045.1A	57564902	22/4C STR BC N/S WHT	22	4	0.149	REELS	1000'	22	WHITE	CMR/CL3R
R20045.1B	57564901	22/4C STR BC N/S WHT	22	4	0.149	REELEX	1000'	22	WHITE	CMR/CL3R
R20045.22B	57567801	22/4C STR BC N/S GRY	22	4	0.149	REELEX	1000'	22	GRAY	CMR/CL3R

BURGLAR ALARM WIRE - SOLID										
TWC PART NUMBER	SW PART NUMBER	DESCRIPTION	AWG	# COND	NOM. DIAM. (inch)	PACKAGING			JACKET COLOR	UL/NEC®
						TYPE	LENGTH	lbs/1000 ft		
Burglar alarm, public address systems, intercoms, telephone stations, speakers, instrumentation & control, sunlight resistant. For power-limited circuits use except those in plenums.										
R20374.1B	57565101	22/2C SOL BC N/S GRY	22	2	0.123	REELEX	1000'	9	GRAY	CMR/CL3R
R20374.4B	57567701	22/2C SOL BC N/S WHT	22	2	0.123	REELEX	1000'	9	WHITE	CMR/CL3R
R20374.4D	57567703	22/2C SOL BC N/S WHT	22	2	0.123	REELEX	500'	9	WHITE	CMR/CL3R
R20376.1A	57565302	22/4C SOL BC N/S GRY	22	4	0.140	REELS	1000'	14	GRAY	CMR/CL3R
R20376.1B	57565301	22/4C SOL BC N/S GRY	22	4	0.140	REELEX	1000'	14	GRAY	CMR/CL3R
R20376.1C	57565304	22/4C SOL BC N/S GRY	22	4	0.140	REELS	500'	14	GRAY	CMR/CL3R
R20376.3B	57565501	22/4C SOL BC N/S WHT	22	4	0.140	REELEX	1000'	14	WHITE	CMR/CL3R
R20376.3D	57565503	22/4C SOL BC N/S WHT	22	4	0.140	REELEX	500'	14	WHITE	CMR/CL3R
R20376.4B	57565601	22/4C SOL BC N/S GRN	22	4	0.140	REELEX	1000'	14	GREEN	CMR/CL3R
R20376.5B	57565701	22/4C SOL BC N/S BRN	22	4	0.140	REELEX	1000'	14	BROWN	CMR/CL3R
R20376.6B	57565801	22/4C SOL BC N/S BLU	22	4	0.140	REELEX	1000'	14	BLUE	CMR/CL3R
R20376.7B	57565901	22/4C SOL BC N/S ORG	22	4	0.140	REELEX	1000'	14	ORANGE	CMR/CL3R
R20376.8B	57566001	22/4C SOL BC N/S YLW	22	4	0.140	REELEX	1000'	14	YELLOW	CMR/CL3R
R20376.12B	57565201	22/4C SOL BC N/S BGE	22	4	0.140	REELEX	1000'	14	BEIGE	CMR/CL3R

RISER RATED - MULTI-CONDUCTOR UNSHIELDED										
TWC PART NUMBER	SW PART NUMBER	DESCRIPTION	AWG	# COND	NOM. DIAM. (inch)	PACKAGING			JACKET COLOR	UL/NEC®
						TYPE	LENGTH	lbs/1000 ft		
Burglar alarm, public address systems, intercoms, telephone stations, speakers, instrumentation & control, sunlight resistant. For power-limited circuits use except those in plenums.										
R20045.1A	57564902	22/4C STR BC N/S WHT	22	4	0.149	REELS	1000'	15	WHITE	CMR/CL3R
R20045.1B	57564901	22/4C STR BC N/S WHT	22	4	0.149	REELEX	1000'	15	WHITE	CMR/CL3R
R20045.22B	57567801	22/4C STR BC N/S WHT	22	4	0.149	REELEX	1000'	15	WHITE	CMR/CL3R
R20046.1A	57643701	22/5C STR BC N/S GRY	22	5	0.156	REELS	1000'	19	GRAY	CMR/CL3R
R20047.1A	57565001	22/6C STR BC N/S GRY	22	6	0.167	REELS	1000'	22	GRAY	CMR/CL3R
R20047.1B	57565002	22/6C STR BC N/S GRY	22	6	0.167	REELEX	1000'	22	GRAY	CMR/CL3R
R20047.1D	57565003	22/6C STR BC N/S GRY	22	6	0.167	REELEX	500'	22	GRAY	CMR/CL3R
R20025.1A	57564802	22/8C STR BC N/S GRY	22	8	0.191	REELS	1000'	28	GRAY	CMR/CL3R
R20025.1D	57564803	22/8C STR BC N/S GRY	22	8	0.191	REELEX	500'	28	GRAY	CMR/CL3R
R20051.1A	57583202	22/10C STR BC N/S GRY	22	10	0.204	REELS	1000'	33	GRAY	CMR/CL3R
R20051.1B	57583201	22/10C STR BC N/S GRY	22	10	0.204	REELEX	1000'	33	GRAY	CMR/CL3R
R20487.1A	57566102	22/12C STR BC N/S GRY	22	12	0.235	REELS	1000'	40	GRAY	CMR/CL3R
R20487.1B	57566101	22/12C STR BC N/S GRY	22	12	0.235	REELEX	1000'	40	GRAY	CMR/CL3R
R30017.1A	57644102	20/2C STR BC N/S GRY	20	2	0.142	REELS	1000'	13	GRAY	CMR/CL3R
R30017.1B	57644101	20/2C STR BC N/S GRY	20	2	0.142	REELEX	1000'	13	GRAY	CMR/CL3R
R40018.1A	57566402	18/2C STR BC N/S GRY	18	2	0.166	REELS	1000'	18	GRAY	CMR/CL3R
R40018.1B	57566401	18/2C STR BC N/S GRY	18	2	0.166	REELEX	1000'	18	GRAY	CMR/CL3R
R40018.1D	57566403	18/2C STR BC N/S GRY	18	2	0.166	REELEX	500'	18	GRAY	CMR/CL3R
R40018.53B	57566501	18/2C STR BC N/S WHT	18	2	0.166	REELEX	1000'	18	WHITE	CMR/CL3R
R40048.1A	57568102	18/3C STR BC N/S GRY	18	3	0.177	REELS	1000'	25	GRAY	CMR/CL3R
R40048.1B	57568101	18/3C STR BC N/S GRY	18	3	0.177	REELEX	1000'	25	GRAY	CMR/CL3R
R40049.1A	57566702	18/4C STR BC N/S GRY	18	4	0.192	REELS	1000'	31	GRAY	CMR/CL3R
R40049.1B	57566701	18/4C STR BC N/S GRY	18	4	0.192	REELEX	1000'	31	GRAY	CMR/CL3R
R40015.1A	57566302	18/6C STR BC N/S GRY	18	6	0.230	REELS	1000'	45	GRAY	CMR/CL3R
R40015.1C	57566304	18/6C STR BC N/S GRY	18	6	0.230	REELS	500'	45	GRAY	CMR/CL3R
R40052.1A	57566802	18/8C STR BC N/S GRY	18	8	0.251	REELS	1000'	57	GRAY	CMR/CL3R
R40054.1A	57566902	18/10C STR BC N/S GRY	18	10	0.275	REELS	1000'	70	GRAY	CMR/CL3R
R40024.1A	57566602	18/12C STR BC N/S GRY	18	12	0.291	REELS	1000'	83	GRAY	CMR/CL3R
R50003.1A	57567902	16/2C STR BC N/S GRY	16	2	0.190	REELS	1000'	26	GRAY	CMR/CL3R
R50003.1B	57567901	16/2C STR BC N/S GRY	16	2	0.190	REELEX	1000'	26	GRAY	CMR/CL3R
R50003.19B	57568001	16/2C STR BC N/S WHT	16	2	0.190	REELEX	1000'	26	WHITE	CMR/CL3R
R50045.1A	57567301	16/4C STR BC N/S GRY	16	4	0.222	REELS	1000'	46	GRAY	CMR/CL3R
R50045.1B	57567302	16/4C STR BC N/S GRY	16	4	0.222	REELEX	1000'	46	GRAY	CMR/CL3R
R50045.1D	57567303	16/4C STR BC N/S GRY	16	4	0.222	REELEX	500'	46	GRAY	CMR/CL3R
R60012.1A	57567502	14/2C STR BC N/S GRY	14	2	0.228	REELS	1000'	38	GRAY	CL3R/FPLR
R60012.1B	57567501	14/2C STR BC N/S GRY	14	2	0.228	REELEX	1000'	38	GRAY	CL3R/FPLR
R60014.1A	57567402	14/4C STR BC N/S GRY	14	4	0.267	REELS	1000'	70	GRAY	CL3R/FPLR
R70003.1A	57787202	12/2C STR BC N/S GRY	12	2	0.276	REELS	1000'	58	GRAY	CL3R/FPLR

ACCESS CONTROL CABLE / BURGLAR ALARM WIRE / ELECTRONIC CABLE RISER RATED

# ELECTRONIC CABLE RISER RATED

**SECURITY,  
SOUND &  
ELECTRONIC  
CABLE**



RISER RATED - MULTI-CONDUCTOR OVERALL SHIELDED										
TWC PART NUMBER	SW PART NUMBER	DESCRIPTION	AWG	# COND	NOM. DIAM. (inch)	PACKAGING			JACKET COLOR	UL/NEC®
						TYPE	LENGTH	lbs/1000 ft		
Burglar alarm, public address systems, intercoms, telephone stations, speakers, instrumentation & control, sunlight resistant. For power-limited circuits use except those in plenums.										
R20007.1A	57572102	22/2C STR BC OAS GRY	22	2	0.130	REELS	1000'	12	GRAY	CMR/CL3R
R20007.1B	57572101	22/2C STR BC OAS GRY	22	2	0.130	REELEX	1000'	12	GRAY	CMR/CL3R
R20007.1D	57572104	22/2C STR BC OAS GRY	22	2	0.130	REELEX	500'	12	GRAY	CMR/CL3R
R20008.1A	57786901	22/4C STR BC 2C-OAS 2C N/S GRY	22	4	0.149	REELS	1000'	9	GRAY	CMR/CL3R
R20016.1A	57572202	22/3C STR BC OAS GRY	22	3	0.138	REELS	1000'	15	GRAY	CMR/CL3R
R20030.1A	57572402	22/4C STR BC OAS GRY	22	4	0.149	REELS	1000'	18	GRAY	CMR/CL3R
R20030.1B	57572401	22/4C STR BC OAS GRY	22	4	0.149	REELEX	1000'	18	GRAY	CMR/CL3R
R20076.1A	57572502	22/6C STR BC OAS GRY	22	6	0.167	REELS	1000'	24	GRAY	CMR/CL3R
R20076.1B	57572501	22/6C STR BC OAS GRY	22	6	0.167	REELEX	1000'	24	GRAY	CMR/CL3R
R20076.1D	57572504	22/6C STR BC OAS GRY	22	6	0.167	REELEX	500'	24	GRAY	CMR/CL3R
R20024.1A	57572302	22/8C STR BC OAS GRY	22	8	0.191	REELS	1000'	30	GRAY	CMR/CL3R
R20024.1B	57572301	22/8C STR BC OAS GRY	22	8	0.191	REELEX	1000'	30	GRAY	CMR/CL3R
R20024.1D	57572304	22/8C STR BC OAS GRY	22	8	0.191	REELEX	500'	30	GRAY	CMR/CL3R
R20081.1D	57572604	22/12C STR BC OAS GRY	22	12	0.235	REELEX	500'	43	GRAY	CMR/CL3R
R30024.1A	57572702	20/2C STR BC OAS GRY	20	2	0.142	REELS	1000'	15	GRAY	CMR/CL3R
R30024.1B	57572701	20/2C STR BC OAS GRY	20	2	0.142	REELEX	1000'	15	GRAY	CMR/CL3R
R30041.1A	57572802	20/3C STR BC OAS GRY	20	3	0.151	REELS	1000'	19	GRAY	CMR/CL3R
R40013.1A	57573102	18/2C STR BC OAS GRY	18	2	0.166	REELS	1000'	20	GRAY	CMR/CL3R
R40013.1B	57573101	18/2C STR BC OAS GRY	18	2	0.166	REELEX	1000'	20	GRAY	CMR/CL3R
R40013.1C	57573104	18/2C STR BC OAS GRY	18	2	0.166	REELS	500'	20	GRAY	CMR/CL3R
R40003.1A	57572902	18/3C STR BC OAS GRY	18	3	0.177	REELS	1000'	27	GRAY	CMR/CL3R
R40003.1B	57572901	18/3C STR BC OAS GRY	18	3	0.177	REELEX	1000'	27	GRAY	CMR/CL3R
R40003.1C	57572904	18/3C STR BC OAS GRY	18	3	0.177	REELS	500'	27	GRAY	CMR/CL3R
R40005.1A	57573002	18/4C STR BC OAS GRY	18	4	0.192	REELS	1000'	33	GRAY	CMR/CL3R
R40005.1B	57573001	18/4C STR BC OAS GRY	18	4	0.192	REELEX	1000'	33	GRAY	CMR/CL3R
R40005.1C	57573004	18/4C STR BC OAS GRY	18	4	0.192	REELS	500'	33	GRAY	CMR/CL3R
R40611.1A	57573402	18/6C STR BC OAS GRY	18	6	0.240	REELS	1000'	48	GRAY	CMR/CL3R
R40611.1C	57573404	18/6C STR BC OAS GRY	18	6	0.240	REELS	500'	48	GRAY	CMR/CL3R
R40014.1A	57573202	18/8C STR BC OAS GRY	18	8	0.251	REELS	1000'	60	GRAY	CMR/CL3R
R40014.1C	57573204	18/8C STR BC OAS GRY	18	8	0.251	REELS	500'	60	GRAY	CMR/CL3R
R40075.1C	57573304	18/12C STR BC OAS GRY	18	12	0.291	REELS	500'	86	GRAY	CMR/CL3R
A50039.1A	57570502	16/2C STR BC OAS GRY	16	2	0.190	REELS	1000'	28	GRAY	CMR/CL3R
A50039.1B	57570506	16/2C STR BC OAS GRY	16	2	0.190	REELEX	1000'	28	GRAY	CMR/CL3R
A50039.1C	57570504	16/2C STR BC OAS GRY	16	2	0.190	REELS	500'	28	GRAY	CMR/CL3R
R50044.1A	57573602	16/3C STR BC OAS GRY	16	3	0.203	REELS	1000'	38	GRAY	CMR/CL3R
R50031.1A	57573502	16/4C STR BC OAS GRY	16	4	0.222	REELS	1000'	49	GRAY	CMR/CL3R
R60052.1A	57573702	14/2C STR BC OAS GRY	14	2	0.228	REELS	1000'	41	GRAY	CL3R/FPLR
R70010.1A	57644202	12/2C STR BC OAS GRY	12	2	0.276	REELS	1000'	60	GRAY	CL3R/FPLR

RISER RATED - MULTI-CONDUCTOR UNSHIELDED										
TWC PART NUMBER	SW PART NUMBER	DESCRIPTION	AWG	# PAIRS	NOM. DIAM. (inch)	PACKAGING			JACKET COLOR	UL/NEC®
						TYPE	LENGTH	lbs/1000 ft		
Burglar alarm, public address systems, intercoms, telephone stations, speakers, instrumentation & control, sunlight resistant. For power-limited circuits use except those in plenums.										
R29983.1A	57644002	22/3P STR BC N/S GRY	22	3	0.211	REELS	1000'	24	GRAY	CMR
R29983.1B	57644001	22/3P STR BC N/S GRY	22	3	0.211	REELEX	1000'	24	GRAY	CMR
R29980.1A	57583802	22/6P STR BC N/S GRY	22	6	0.265	REELS	1000'	42	GRAY	CMR

RISER RATED - MULTI-PAIR OVERALL SHIELDED										
TWC PART NUMBER	SW PART NUMBER	DESCRIPTION	AWG	# PAIRS	NOM. DIAM. (inch)	PACKAGING			JACKET COLOR	UL/NEC®
						TYPE	LENGTH	lbs/1000 ft		
Burglar alarm, public address systems, intercoms, telephone stations, speakers, instrumentation & control, sunlight resistant. For power-limited circuits use except those in plenums.										
R29946.1A	57583602	22/3P STR BC OAS GRY	22	3	0.211	REELS	1000'	26	GRAY	CMR
R29946.1B	57583601	22/3P STR BC OAS GRY	22	3	0.211	REELEX	1000'	26	GRAY	CMR
R29943.1A	57583502	22/6P STR BC OAS GRY	22	6	0.265	REELS	1000'	45	GRAY	CMR/CL3R
R29943.1B	57583501	22/6P STR BC OAS GRY	22	6	0.265	REELEX	1000'	45	GRAY	CMR/CL3R

RISER RATED - EACH PAIR SHIELDED (EPS)										
TWC PART NUMBER	SW PART NUMBER	DESCRIPTION	AWG	# PAIRS	NOM. DIAM. (inch)	PACKAGING			JACKET COLOR	UL/NEC®
						TYPE	LENGTH	lbs/1000 ft		
Burglar alarm, public address systems, intercoms, telephone stations, speakers, instrumentation & control, sunlight resistant. For power-limited circuits use except those in plenums.										
R29575.1A	57577701	22/2P STR BC EPS GRY	22	2	0.160	REELS	1000'	18	GRAY	CMR/CL3R
R29564.1A	57577401	22/3P STR BC EPS GRY	22	3	0.190	REELS	1000'	30	GRAY	CMR/CL3R
R49910.1A	57577601	18/2P STR BC EPS GRY	18	2	0.198	REELS	1000'	37	GRAY	CMR/CL3R



ELECTRONIC CABLE RISER RATED

# ELECTRONIC CABLE PLENUM RATED

**SECURITY,  
SOUND &  
ELECTRONIC  
CABLE**

ELECTRONIC CABLE PLENUM RATED



PLENUM RATED - MULTI-CONDUCTOR UNSHIELDED										
TWC PART NUMBER	SW PART NUMBER	DESCRIPTION	AWG	# COND	NOM. DIAM. (inch)	PACKAGING			JACKET COLOR	UL/NEC®
						TYPE	LENGTH	lbs/1000 ft		
Burglar alarm, public address systems, intercoms, telephone stations, speakers, instrumentation & control, sunlight resistant. For all power-limited circuits use.										
P20031.1A	57563202	22/2C STR BC N/S WHT	22	2	0.118	REELS	1000'	9	WHITE	CMP/CL3P
P20031.1B	57563201	22/2C STR BC N/S WHT	22	2	0.118	REELEX	1000'	9	WHITE	CMP/CL3P
P20035.1A	57563302	22/4C STR BC N/S WHT	22	4	0.137	REELS	1000'	15	WHITE	CMP/CL3P
P20035.1B	57563301	22/4C STR BC N/S WHT	22	4	0.137	REELEX	1000'	15	WHITE	CMP/CL3P
P20177.1B	57563501	22/4C STR BC N/S WHT	22	4	0.128	REELEX	1000'	14	WHITE	CMP/CL3P
P20008.1A	57563002	22/6C STR BC N/S WHT	22	6	0.155	REELS	1000'	21	WHITE	CMP/CL3P
P20008.1B	57563001	22/6C STR BC N/S WHT	22	6	0.155	REELEX	1000'	21	WHITE	CMP/CL3P
P20008.1D	57563003	22/6C STR BC N/S WHT	22	6	0.155	REELEX	500'	21	WHITE	CMP/CL3P
P20018.1A	57563102	22/8C STR BC N/S WHT	22	8	0.179	REELS	1000'	27	WHITE	CMP/CL3P
P20044.1A	57563402	22/12C STR BC N/S WHT	22	12	0.223	REELS	1000'	39	WHITE	CMP/CL3P
P30016.1A	57569202	20/2C STR BC N/S WHT	20	2	0.13	REELS	1000'	12	WHITE	CMP/CL3P
P30016.1B	57569201	20/2C STR BC N/S WHT	20	2	0.13	REELEX	1000'	12	WHITE	CMP/CL3P
P40020.1A	57563602	18/2C STR BC N/S WHT	18	2	0.154	REELS	1000'	17	WHITE	CMP/CL3P
P40020.1B	57563601	18/2C STR BC N/S WHT	18	2	0.154	REELEX	1000'	17	WHITE	CMP/CL3P
P40020.1C	57563604	18/2C STR BC N/S WHT	18	2	0.154	REELS	500'	17	WHITE	CMP/CL3P
P40024.1A	57563702	18/3C STR BC N/S WHT	18	3	0.165	REELS	1000'	24	WHITE	CMP/CL3P
P40024.1B	57563701	18/3C STR BC N/S WHT	18	3	0.165	REELEX	1000'	24	WHITE	CMP/CL3P
P40031.1A	57564002	18/4C STR BC N/S WHT	18	4	0.184	REELS	1000'	30	WHITE	CMP/CL3P
P40031.1B	57564001	18/4C STR BC N/S WHT	18	4	0.184	REELEX	1000'	30	WHITE	CMP/CL3P
P40065.1A	57564102	18/6C STR BC N/S WHT	18	6	0.218	REELS	1000'	44	WHITE	CMP/CL3P
P40065.1C	57564104	18/6C STR BC N/S WHT	18	6	0.218	REELS	500'	44	WHITE	CMP/CL3P
P40030.1A	57563802	18/8C STR BC N/S WHT	18	8	0.239	REELS	1000'	57	WHITE	CMP/CL3P
P50032.1A	57564202	16/2C STR BC N/S WHT	16	2	0.178	REELS	1000'	25	WHITE	CMP/CL3P
P50032.1B	57564201	16/2C STR BC N/S WHT	16	2	0.178	REELEX	1000'	25	WHITE	CMP/CL3P
P50032.1D	57564203	16/2C STR BC N/S WHT	16	2	0.178	REELEX	500'	25	WHITE	CMP/CL3P
P50059.1A	57564302	16/4C STR BC N/S WHT	16	4	0.21	REELS	1000'	45	WHITE	CMP/CL3P
P60040.1A	57564402	14/2C STR BC N/S WHT	14	2	0.216	REELS	1000'	37	WHITE	CL3P/FPLP
P70031.1A	57786802	12/2C STR BC N/S WHT	12	2	0.264	REELS	1000'	56	WHITE	CL3P/FPLP



PLENUM RATED - EACH PAIR SHIELDED										
TWC PART NUMBER	SW PART NUMBER	DESCRIPTION	AWG	# PAIRS	NOM. DIAM. (inch)	PACKAGING			JACKET COLOR	UL/NEC®
						TYPE	LENGTH	lbs/1000 ft		
Burglar alarm, public address systems, intercoms, telephone stations, speakers, instrumentation & control, sunlight resistant. For all power-limited circuits use.										
P29691.1A	57577301	22/2P STR BC EPS WHT	22	2	0.148	REELS	1000'	21	WHITE	CMP/CL3P
P29841.1A	57721202	22/2P STR BC EPS (CD) WHT	22	2	0.148	REELS	1000'	18	WHITE	CMP/CL3P
P29841.1B	57721201	22/2P STR BC EPS (CD) WHT	22	2	0.148	REELEX	1000'	18	WHITE	CMP/CL3P
P29996.1A	57577501	22/3P STR BC EPS WHT	22	3	0.178	REELS	1000'	30	WHITE	CMP/CL3P
P49995.1A	57786502	18/2P STR BC EPS(CD) WHT	18	2	0.186	REELS	1000'	34	WHITE	CMP/CL3P

PLENUM RATED - MULTI-CONDUCTOR OVERALL SHIELDED										
TWC PART NUMBER	SW PART NUMBER	DESCRIPTION	AWG	# COND	NOM. DIAM. (inch)	PACKAGING			JACKET COLOR	UL/NEC®
						TYPE	LENGTH	lbs/1000 ft		
Burglar alarm, public address systems, intercoms, telephone stations, speakers, instrumentation, control and other low voltage circuits that are power-limited. For all power-limited circuit use.										
P20032.1A	57570802	22/2C STR BC OAS WHT	22	2	0.118	REELS	1000'	11	WHITE	CMP/CL3P
P20032.1B	57570801	22/2C STR BC OAS WHT	22	2	0.118	REELEX	1000'	11	WHITE	CMP/CL3P
P20032.1D	57570803	22/2C STR BC OAS WHT	22	2	0.118	REELEX	500'	11	WHITE	CMP/CL3P
P20043.1B	57721101	22/3 STR BC OAS WHT	22	3	0.126	REELEX	1000'	14	WHITE	CMP/CL3P
P20270.1A	57571002	22/4C STR BC OAS WHT	22	4	0.137	REELS	1000'	17	WHITE	CMP/CL3P
P20270.1B	57571001	22/4C STR BC OAS WHT	22	4	0.137	REELEX	1000'	17	WHITE	CMP/CL3P
P20012.4A	57720902	22/2 STR BC SHLD + 2/C NS WHT	22	4	0.137	REELS	1000'	18	WHITE	CMP/CL3P
P20012.4B	57720901	22/2 STR BC SHLD + 2/C NS WHT	22	4	0.137	REELEX	1000'	18	WHITE	CMP/CL3P
P20019.1A	57570702	22/6C STR BC OAS WHT	22	6	0.155	REELS	1000'	23	WHITE	CMP/CL3P
P20019.1B	57570701	22/6C STR BC OAS WHT	22	6	0.155	REELEX	1000'	23	WHITE	CMP/CL3P
P20037.1A	57570902	22/8C STR BC OAS WHT	22	8	0.179	REELS	1000'	29	WHITE	CMP/CL3P
P20023.1A	57721002	22/12C STR BC OAS WHT	22	12	0.223	REELS	1000'	42	WHITE	CMP/CL3P
P30006.1A	57721502	20/2C STR BC OAS WHT	20	2	0.130	REELS	1000'	14	WHITE	CMP/CL3P
P30045.1A	57643502	20/3C STR BC OAS WHT	20	3	0.139	REELS	1000'	18	WHITE	CMP/CL3P
P30003.1A	57721402	20/4C STR BC OAS WHT	20	4	0.151	REELS	1000'	23	WHITE	CMP/CL3P
P40133.1A	57571602	18/2C STR BC OAS WHT	18	2	0.154	REELS	1000'	19	WHITE	CMP/CL3P
P40133.1B	57571601	18/2C STR BC OAS WHT	18	2	0.154	REELEX	1000'	19	WHITE	CMP/CL3P
P40133.1C	57571604	18/2C STR BC OAS WHT	18	2	0.154	REELS	500'	19	WHITE	CMP/CL3P
P40133.1D	57571605	18/2C STR BC OAS WHT	18	2	0.154	REELEX	500'	19	WHITE	CMP/CL3P
P41111.1A	57721602	18/2C STR TC OAS FEP/PVC WHT	18	2	0.152	REELS	1000'	21	WHITE	CMP/CL3P
P40032.1A	57571102	18/3C STR BC OAS WHT	18	3	0.165	REELS	1000'	26	WHITE	CMP/CL3P
P40032.1B	57571101	18/3C STR BC OAS WHT	18	3	0.165	REELEX	1000'	26	WHITE	CMP/CL3P
P40032.1C	57571104	18/3C STR BC OAS WHT	18	3	0.165	REELS	500'	26	WHITE	CMP/CL3P
P40073.1A	57571502	18/4C STR BC OAS WHT	18	4	0.184	REELS	1000'	33	WHITE	CMP/CL3P
P40073.1B	57571501	18/4C STR BC OAS WHT	18	4	0.184	REELEX	1000'	33	WHITE	CMP/CL3P
P40073.1C	57571504	18/4C STR BC OAS WHT	18	4	0.184	REELS	500'	33	WHITE	CMP/CL3P
P40073.1D	57571503	18/4C STR BC OAS WHT	18	4	0.184	REELEX	500'	33	WHITE	CMP/CL3P
P40040.1A	57571302	18/6C STR BC OAS WHT	18	6	0.228	REELS	1000'	47	WHITE	CMP/CL3P
P40040.1B	57571301	18/6C STR BC OAS WHT	18	6	0.228	REELEX	1000'	47	WHITE	CMP/CL3P
P40040.1C	57571304	18/6C STR BC OAS WHT	18	6	0.228	REELS	500'	47	WHITE	CMP/CL3P
P40070.1A	57571402	18/8C STR BC OAS WHT	18	8	0.241	REELS	1000'	60	WHITE	CMP/CL3P
P40070.1C	57571404	18/8C STR BC OAS WHT	18	8	0.241	REELS	500'	60	WHITE	CMP/CL3P
P50002.1A	57571702	16/2C STR BC OAS WHT	16	2	0.178	REELS	1000'	27	WHITE	CMP/CL3P
P50002.1B	57571701	16/2C STR BC OAS WHT	16	2	0.178	REELEX	1000'	27	WHITE	CMP/CL3P
P50023.1A	57571802	16/4C STR BC OAS WHT	16	4	0.210	REELS	1000'	48	WHITE	CMP/CL3P
P60022.1A	57571902	14/2C STR BC OAS WHT	14	2	0.216	REELS	1000'	40	WHITE	CL3P/FPLP

# CATEGORY CABLE

CATEGORY 3 - RISER RATED (CMR/CMG) & PLENUM RATED (CMP)



## APPLICATIONS

Designed for use in data and analog and digital voice applications, and for use in backbone cabling systems as described in ANSI/TIA 568-C.2

## INDUSTRY APPROVALS

### RISER

- UL Type CMR
- C (UL) CMG
- IEEE 802.3 10 Base T
- ANSI/TIA 568-C.2 (CATEGORY 3) FLAME RATING UL 1666

### PLENUM

- UL Type CMP
- C (UL) CMP
- IEEE 802.3 10 Base T
- ANSI/TIA 568-C.2 (CATEGORY 3) FLAME RATING NFPA 262, CMP

## CONSTRUCTION

### RISER

24 AWG solid bare copper, SR-PVC insulation, polyester rip cord, FR PVC jacket. Each pair has different lay lengths for cross-talk prevention

- **Sample Jacket Marking:**  
E118871 24 AWG TYPE CMR (UL) C (UL) CMG IEEE 802.3 10 BASE T TIA 568-C.2  
CATEGORY 3 MADE IN USA SEQUENTIAL FOOTAGE MARKINGS

### PLENUM

24 AWG solid bare copper, low smoke FR-PVC insulation, polyester rip cord, low smoke FR PVC jacket. Each pair has different lay lengths for cross-talk prevention

- **Sample Jacket Marking:**  
E118871 24 AWG TYPE CMP(UL) C (UL) IEEE 802.3 10 BASE T TIA 568-C.2  
CATEGORY 3 MADE IN USA SEQUENTIAL FOOTAGE MARKINGS

## PACKAGING

Armored constructions available as well as various jacket colors & packaging options - consult factory

# CATEGORY 3 CABLE

DATA/  
TELEPHONE  
CABLES



CATEGORY 3 CABLE - RISER RATED (CMR/CMG)										
TWC PART NUMBER	SW PART NUMBER	DESCRIPTION	AWG	# PAIRS	NOM. DIAM. (inch)	PACKAGING			JACKET COLOR	UL/NEC®
						TYPE	LENGTH	lbs/1000 ft		
Designed for use in data, analog, and digital voice applications, and for use in backbone cabling systems as described in ANSI/TIA 568-C.2. UL TYPE CMR, C (UL) CMG, IEEE 802.3 10 Base T, ANSI/TIA 568-C.2 (CATEGORY 3) flame rating UL 1666										
I19998.3A	57557001	CAT3 24/2P SOL BC GRY	24	2	0.164	REELS	1000'	13	GRAY	CMR
I19998.3B	57557002	CAT3 24/2P SOL BC GRY	24	2	0.164	REELEX	1000'	13	GRAY	CMR
I19998.3D	57557003	CAT3 24/2P SOL BC GRY	24	2	0.164	REELEX	500'	13	GRAY	CMR
I19998.5B	57557201	CAT3 24/2P SOL BC BGE	24	2	0.164	REELEX	1000'	13	BEIGE	CMR
I19988.2B	57556401	CAT3 24/3P SOL BC BGE	24	3	0.175	REELEX	1000'	17	BEIGE	CMR
I19988.3B	57556501	CAT3 24/3P SOL BC GRY	24	3	0.175	REELEX	1000'	17	GRAY	CMR
I19990.2B	57556601	CAT3 24/4P SOL BC BGE	24	4*	0.191	REELEX	1000'	23	BEIGE	CMR
I19990.3A	57556701	CAT3 24/4P SOL BC GRY	24	4*	0.191	REELS	1000'	23	GRAY	CMR
I19990.3B	57556702	CAT3 24/4P SOL BC GRY	24	4*	0.191	REELEX	1000'	23	GRAY	CMR
I19990.4B	57556801	CAT3 24/4P SOL BC WHT	24	4	0.191	REELEX	1000'	23	WHITE	CMR
I19997.3B	57556901	CAT3 24/6P SOL BC GRY	24	6	0.250	REELEX	1000'	32	GRAY	CMR
I19995.3A	57556101	CAT3 24/12P SOL BC GRY	24	12	0.293	REELS	1000'	54	GRAY	CMR
I19986.3A	57556201	CAT3 24/25P SOL BC GRY	24	25	0.394	REELS	1000'	104	GRAY	CMR

CATEGORY 3 CABLE - PLENUM RATED (CMP)										
TWC PART NUMBER	SW PART NUMBER	DESCRIPTION	AWG	# PAIRS	NOM. DIAM. (inch)	PACKAGING			JACKET COLOR	UL/NEC®
						TYPE	LENGTH	lbs/1000 ft		
I19989.1B	57558601	CAT3 24/4P SOL BC NAT	24	4*	0.182	REELEX	1000'	21	WHITE	CMP
I19989.2B	57558701	CAT3 24/4P SOL BC GRY	24	4*	0.182	REELEX	1000'	21	GRAY	CMP
I19985.1A	57720201	CAT3 24/25P SOL BC WHT	24	25	0.377	REELS	1000'	102	WHITE	CMP

\*VERIFIED - PRINT LEGEND WILL INCLUDE ETL VERIFIED TO ANSI TIA 568-C.2

PR# COLOR CODE - TIP/RING	
1 - WHT-BLUE & BLUE-WHT	14 - BLK-BRN & BRN-BLK
2 - WHT-ORG & ORG-WHT	15 - BLK-GRAY & GRAY-BLK
3 - WHT-GRN & GRN-WHT	16 - YLW-BLUE & BLUE-YLW
4 - WHT-BRN & BRN-WHT	17 - YLW-ORG & ORG-YLW
5 - WHT-GRAY & GRAY-WHT	18 - YLW-GRN & GRN-YLW
6 - RED-BLUE & BLUE-RED	19 - YLW-BRN & BRN-YLW
7 - RED-ORG & ORG-RED	20 - YLW-GRAY & GRAY-YLW
8 - RED-GRN & GRN-RED	21 - VLT-BLUE & BLUE-VLT
9 - RED-BRN & BRN-RED	22 - VLT-ORG & ORG-VLT
10- RED-GRAY & GRAY-RED	23 - VLT-GRN & GRN-VLT
11 - BLK-BLUE & BLUE-BLK	24 - VLT-BRN & BRN-VLT
12 - BLK-ORG & ORG-BLK	25 - VLT-GRAY & GRN-VLT
13 - BLK-GRN & GRN-BLK	

ELECTRICAL PERFORMANCE DATA		
FREQUENCY	MAX ATTENUATION (dB/100m)	NEAR-END CROSSTALK dB (min)
.772 kHz	2.2	43
1 MHz	2.6	41
4 MHz	5.6	32
8 MHz	8.5	27
10 MHz	9.7	26
16 MHz	13.1	23

CATEGORY CABLE / CATEGORY 3 CABLE

# CATEGORY CABLE

CATEGORY 5e - RISER RATED (CMR/CMG) & PLENUM RATED (CMP)

DATA/  
TELEPHONE  
CABLE



## RISER RATED - CMR

### APPLICATIONS - RISER (CMR/CMG)

1000 BASE-T (GIGABIT ETHERNET); 100 BASE-T (FAST ETHERNET); 10 BASE-T (IEEE 802.3); 4/16 Mbps TOKEN RING (IEEE 802.5); 100 VG-Any LAN; 100 Mbps TP-PMD (ANSI X3T9.5); 55/155 Mbps ATM; VOICE, ISDN, Video to Desktop, Multimedia

### INDUSTRY APPROVALS - RISER (CMR/CMG)

- ETL Verified ANSI TIA 568-C.2 Category 5e
- UL SUBJECT 444
- (UL) c(UL) TYPE CMR/CMG
- ICEA-S-90-661
- NEC® ARTICLE 800 TYPE CMR OR CM
- ISO/TEC 11801

### CONSTRUCTION - RISER (CMR/CMG)

24 AWG solid bare copper, 4 unshielded twisted pairs, FRPE insulation, rip cord, FR PVC jacket, operating temperature 75°C, 300 volts

- **Sample Jacket Marking:**  
E118871 4PR 24AWG CMR (UL) c(UL) CMG 75C ETL VERIFIED TO TIA 568-C.2  
CATEGORY 5e 350MHz RoHS COMPLIANT. SEQUENTIAL FOOTAGE MARKING

## PLENUM RATED - CMP

### APPLICATIONS - PLENUM (CMP)

1000 BASE-T (GIGABIT ETHERNET); 100 BASE-T (FAST ETHERNET); 10 BASE-T (IEEE 802.3); 4/16 Mbps TOKEN RING (IEEE 802.5); 100 VG-Any LAN; 100 Mbps TP-PMD (ANSI X3T9.5); 55/155 Mbps ATM; VOICE, ISDN, Video to Desktop, Multimedia

### INDUSTRY APPROVALS - PLENUM (CMP)

- ETL Verified ANSI TIA 568-C.2 CATEGORY 5e
- ISO/IEC 11801 Ed 2.0. (CLASS D) Approved For Plenum Use Without Conduit Per NEC® Article 800 by passing UL-910 Steiner Tunnel Test and CSA CMP
- UL LISTED CMP c(UL)

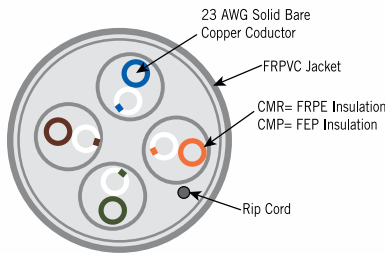
### CONSTRUCTION - PLENUM (CMP)

24 AWG solid bare copper, 4 unshielded twisted pairs, FEP insulation, rip cord, FR PVC jacket, operating temperature 75°C, 300 volts

- **Sample Jacket Marking:**  
E118871 4PR 24AWG CMP (UL) c(UL) 75C ETL VERIFIED TO TIA 568-C.2  
350MHz RoHS COMPLIANT. SEQUENTIAL FOOTAGE MARKING

### PACKAGING

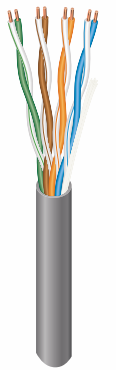
AVAILABLE IN 1000 FT. BOXES OR REELS. REEL-IN-A-BOX UPON REQUEST.  
JACKET COLORS OTHER THAN LISTED CONSULT FACTORY. COLOR CODE:  
(Orange & White/Orange, Green & White/Green, Blue & White/Blue, Brown & White/Brown)



CATEGORY 5e CABLE - RISER RATED (CMR/CMG)										
TWC PART NUMBER	SW PART NUMBER	DESCRIPTION	AWG	# PAIRS	NOM. DIAM. (inch)	PACKAGING			JACKET COLOR	UL/ NEC®
						TYPE	LENGTH	lbs/1000 ft		
R19776.1B	57557901	CAT5e 24/4P SOL BC GRY	24	4	0.200	REELEX	1000'	22	GRAY	CMR
R19776.1H	57557902	CAT5e 24/4P SOL BC RIB GRY	24	4	0.200	RIBS	1000'	22	GRAY	CMR
R19776.2B	57558001	CAT5e 24/4P SOL BC PNK	24	4	0.200	REELEX	1000'	22	PINK	CMR
R19776.2H	57558002	CAT5e 24/4P SOL BC RIB PNK	24	4	0.200	RIBS	1000'	22	PINK	CMR
R19776.3B	57558101	CAT5e 24/4P SOL BC BLU	24	4	0.200	REELEX	1000'	22	BLUE	CMR
R19776.3H	57558102	CAT5e 24/4P SOL BC RIB BLU	24	4	0.200	RIBS	1000'	22	BLUE	CMR
R19776.4B	57558201	CAT5e 24/4P SOL BC WHT	24	4	0.200	REELEX	1000'	22	WHITE	CMR
R19776.4H	57558202	CAT5e 24/4P SOL BC RIB WHT	24	4	0.200	RIBS	1000'	22	WHITE	CMR
R19776.5B	57558301	CAT5e 24/4P SOL BC YLW	24	4	0.200	REELEX	1000'	22	YELLOW	CMR
R19776.5H	57558302	CAT5e 24/4P SOL BC RIB YLW	24	4	0.200	RIBS	1000'	22	YELLOW	CMR
R19776.8B	57558401	CAT5e 24/4P SOL BC ORG	24	4	0.200	REELEX	1000'	22	ORANGE	CMR
R19776.8H	57558402	CAT5e 24/4P SOL BC RIB ORG	24	4	0.200	RIBS	1000'	22	ORANGE	CMR
R19776.9B	57558501	CAT5e 24/4P SOL BC GRN	24	4	0.200	REELEX	1000'	22	GREEN	CMR
R19776.9H	57558502	CAT5e 24/4P SOL BC RIB GRN	24	4	0.200	RIBS	1000'	22	GREEN	CMR

CATEGORY 5e CABLE - PLENUM RATED (CMP)										
TWC PART NUMBER	SW PART NUMBER	DESCRIPTION	AWG	# PAIRS	NOM. DIAM. (inch)	PACKAGING			JACKET COLOR	UL/ NEC®
						TYPE	LENGTH	lbs/1000 ft		
P19915.1H	57557301	CAT5e 24/4P SOL BC RIB WHT	24	4	0.190	RIBS	1000'	24	WHITE	CMP
P19915.2B	57557401	CAT5e 24/4P SOL BC BLUE	24	4	0.190	REELEX	1000'	24	BLUE	CMP
P19915.2H	57557402	CAT5e 24/4P SOL BC RIB BLUE	24	4	0.190	RIBS	1000'	24	BLUE	CMP
P19915.3H	57557501	CAT5e 24/4P SOL BC RIB GRAY	24	4	0.190	RIBS	1000'	24	GRAY	CMP
P19915.5H	57557601	CAT5e 24/4P SOL BC RIB YLW	24	4	0.190	RIBS	1000'	24	YELLOW	CMP
P19915.6H	57557701	CAT5e 24/4P SOL BC RIB GRN	24	4	0.190	RIBS	1000'	24	GREEN	CMP
P19915.9H	57557801	CAT5e 24/4P SOL BC RIB ORG	24	4	0.190	RIBS	1000'	24	ORANGE	CMP

CATEGORY 5e - 350 MHz ELECTRICAL PERFORMANCE DATA									
FREQUENCY	ATTENUATION (dB/100m)	NEXT (dB)	ACR (dB)	PSNEXT (dB)	PSACR (dB)	ELFEXT (dB)	PS.ELFEXT (dB)	RETURN LOSS (dB)	CHARACTERISTIC IMPEDANCE (OHMS)
1	2	74.3	72.3	72.3	70.3	67.8	64.8	20	100 ± 15
4	3.8	65.5	61.5	63.3	59.5	55.7	52.7	23	100 ± 15
8	5.4	60.8	55.4	58.8	53.4	49.7	46.7	24.5	100 ± 15
10	6	59.3	53.3	57.3	51.3	47.8	44.8	25	100 ± 15
16	7.6	56.3	48.7	54.3	46.7	43.7	40.7	25	100 ± 15
20	8.5	54.8	46.3	52.8	44.3	41.7	38.7	25	100 ± 15
25	9.6	53.3	43.7	51.3	41.7	39.8	36.8	24.3	100 ± 15
31.25	10.7	51	41.2	49.9	39.2	37.9	34.9	23.6	100 ± 15
62.5	15.5	47.4	31.9	45.1	29.2	31.8	28.8	21.5	100 ± 15
100	19.9	44.3	24.4	42.3	22.4	27.8	24.8	20.1	100 ± 15
155	25.3	41.5	16.2	39.5	14.2	23.9	20.9	18.8	100 ± 15
200	29.2	39.8	10.6	37.8	8.6	21.7	18.7	18	100 ± 15
240	36	32.6	-	30.6	-	16.2	13.2	17.4	100 ± 15
300	41	31.2	-	29.2	-	14.2	11.2	16.8	100 ± 15
350	44.9	30.1	-	28.1	-	12.9	9.9	16.3	100 ± 15



CATEGORY CABLE CATEGORY 5e - RISER RATED (CMR/CMG) & PLENUM RATED (CMP)

# CATEGORY CABLE

CATEGORY 6 250 MHz - RISER RATED (CMR/CMG) & PLENUM RATED (CMP)

DATA/  
TELEPHONE  
CABLE



## RISER RATED - CMR

### APPLICATIONS - RISER (CMR-CMG)

1000 BASE-T (GIGABIT ETHERNET); 100 BASE-T (FAST ETHERNET); 10 BASE-T (IEEE 802.3); 4/16 Mbps TOKEN RING (IEEE 802.5); 100 VG-Any LAN 55/155 Mbps ATM; 1.2 Gbps ATM (ATM Forum); 622 Mbps ATM (ATM Forum); 1 Gbps Networking System (WGNA); VOICE, ISDN

### INDUSTRY APPROVALS - RISER (CMR-CMG)

- ETL Verified ANSI TIA 568-C.2 Category 6
- UL SUBJECT 444
- (UL) c(UL) TYPE CMR/CMG
- ISO/IEC 11801
- NEC® ARTICLE 800 TYPE CMR (UL 1666) OR CM FT4
- ISO/TEC 11801

### CONSTRUCTION - RISER (CMR-CMG)

23 AWG solid bare copper, 4 unshielded twisted pairs, FRPE insulation, tape separator, rip cord, FRPVC jacket, operating temperature 75°C, 300 volts

- **Sample Jacket Marking:**  
E118871 4PR 23AWG CMR (UL) c(UL) ETL VERIFIED TO TIA 568-C.2 CATEGORY 6 250 MHz. RoHS COMPLIANT. SEQUENTIAL FOOTAGE MARKING

## PLENUM RATED - CMP

### APPLICATIONS - PLENUM (CMP)

1000 BASE-T (GIGABIT ETHERNET); 100 BASE-T (FAST ETHERNET); 10 BASE-T (IEEE 802.3); 4/16 Mbps TOKEN RING (IEEE 802.5); 100 VG-Any LAN 55/155 Mbps ATM; 1.2 Gbps ATM (ATM Forum); 622 Mbps ATM (ATM Forum); 1 Gbps Networking System (WGNA); VOICE, ISDN

### INDUSTRY APPROVALS - PLENUM (CMP)

- ETL Verified ANSI TIA 568-C.2 CATEGORY 6
- ISO/IEC 11801 Approved For Plenum Use Without Conduit Per NEC® Article 800 by passing UL-910 Steiner Tunnel Test and CSA CMP FT6
- UL LISTED CMP(NFPA 262), UL 444

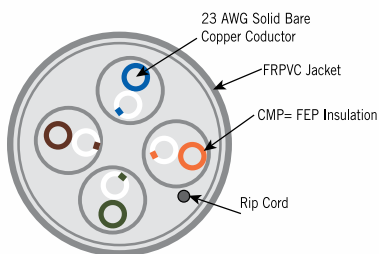
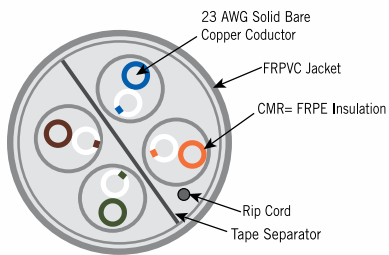
### CONSTRUCTION - PLENUM (CMP)

23 AWG solid bare copper, 4 unshielded twisted pairs, FEP insulation, rip cord, FRPVC jacket, operating temperature 75°C, 300 volts

- **Sample Jacket Marking:**  
E118871 4PR 23AWG CMP (UL) c(UL) 75C ETL VERIFIED TO TIA 568-C.2 CATEGORY 6 250 MHz. RoHS COMPLIANT. SEQUENTIAL FOOTAGE MARKING

### PACKAGING

AVAILABLE IN 1000 FT. BOXES OR REELS. REEL-IN-A-BOX UPON REQUEST.  
JACKET COLORS OTHER THAN LISTED CONSULT FACTORY. COLOR CODE:  
(Orange & White/Orange, Green & White/Green, Blue & White/Blue, Brown & White/Brown)



### CATEGORY 6 - 250 MHz CABLE - RISER RATED (CMR /CMG)

TWC PART NUMBER	SW PART NUMBER	DESCRIPTION	AWG	# PAIRS	NOM. DIAM. (inch)	PACKAGING			JACKET COLOR	UL/ NEC®
						TYPE	LENGTH	lbs/1000 ft		
I99995.2A	57789201	CAT6 250 MHz 23/4P SOL BC CMR BLU	23	4	0.230	REELS	1000'	26	BLUE	CMR
I99995.2B	57789202	CAT6 250 MHz 23/4P SOL BC CMR BLU	23	4	0.230	REELEX	1000'	26	BLUE	CMR
I99995.2H	57789203	CAT6 250 MHz 23/4P SOL BC CMR BLU	23	4	0.230	RIBS	1000'	26	BLUE	CMR
I99995.3A	57789301	CAT6 250 MHz 23/4P SOL BC CMR WHT	23	4	0.230	REEL	1000'	26	WHITE	CMR
I99995.3B	57789302	CAT6 250 MHz 23/4P SOL BC CMR WHT	23	4	0.230	REELEX	1000'	26	WHITE	CMR
I99995.3H	57789303	CAT6 250 MHz 23/4P SOL BC CMR WHT	23	4	0.230	RIBS	1000'	26	WHITE	CMR

### CATEGORY 6 - 250 MHz CABLE - PLENUM RATED - (CMP)

TWC PART NUMBER	SW PART NUMBER	DESCRIPTION	AWG	# PAIRS	NOM. DIAM. (inch)	PACKAGING			JACKET COLOR	UL/ NEC®
						TYPE	LENGTH	lbs/1000 ft		
I99993.1A	57788901	CAT6 250 MHz 23/4P SOL BC CMP BLU	23	4	0.225	REELS	1000'	28	BLUE	CMP
I99993.1B	57788902	CAT6 250 MHz 23/4P SOL BC CMP BLU	23	4	0.225	REELEX	1000'	28	BLUE	CMP
I99993.1H	57788903	CAT6 250 MHz 23/4P SOL BC CMP BLU	23	4	0.225	RIBS	1000'	28	BLUE	CMP
I99993.2A	57789101	CAT6 250 MHz 23/4P SOL BC CMP WHT	23	4	0.225	REEL	1000'	28	WHITE	CMP
I99993.2B	57789102	CAT6 250 MHz 23/4P SOL BC CMP WHT	23	4	0.225	REELEX	1000'	28	WHITE	CMP
I99993.2H	57789103	CAT6 250 MHz 23/4P SOL BC CMP WHT	23	4	0.225	RIBS	1000'	28	WHITE	CMP

### CATEGORY 6 - 250 MHz ELECTRICAL PERFORMANCE DATA

FREQUENCY	ATTENUATION (dB/100m)	NEXT (dB)	ACR (dB)	PSNEXT (dB)	PSACR (dB)	ELFEXT (dB)	PS.ELFEXT (dB)	RETURN LOSS (dB)	CHARACTERISTIC IMPEDANCE (OHMS)
1	2.0	74.3	72.3	72.3	70.3	67.8	64.8	20	100 ± 15
4	3.8	65.3	61.5	63.3	59.5	55.8	52.8	23	100 ± 15
8	5.3	60.8	55.4	58.8	53.4	49.7	46.7	24.5	100 ± 15
10	6.0	59.3	53.3	57.3	51.3	47.8	44.8	25	100 ± 15
16	7.6	56.2	48.7	54.2	46.7	43.7	40.7	25	100 ± 15
20	8.5	54.8	46.3	52.8	44.3	41.8	38.8	25	100 ± 15
25	9.5	53.3	43.8	51.3	41.8	39.8	36.8	24.3	100 ± 15
31.25	10.7	51.9	41.2	49.9	39.2	37.9	34.9	23.6	100 ± 15
62.5	15.4	47.4	32.0	45.4	30.0	31.9	28.9	21.5	100 ± 15
100	19.8	44.3	24.5	42.3	22.5	27.8	24.8	20.1	100 ± 15
155	25.2	41.4	16.3	39.4	14.3	24.0	21.0	18.8	100 ± 15
200	29.0	39.8	10.8	37.8	8.8	21.8	18.8	18	100 ± 15
250	32.8	38.3	5.5	36.3	3.5	19.8	16.8	17.3	100 ± 15

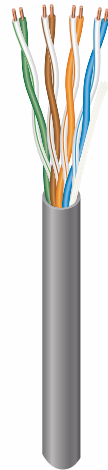
CATEGORY CABLE CATEGORY 6 250 MHz - RISER RATED (CMR/CMG) & PLENUM RATED (CMP)



# CATEGORY CABLE

CATEGORY 6 550 MHz- RISER RATED (CMR/CMG) & PLENUM RATED (CMP)

DATA/  
TELEPHONE  
CABLE



## RISER RATED - CMR

### APPLICATIONS - RISER (CMR-CMG)

1000 BASE-T (GIGABIT ETHERNET); 100 BASE-T (FAST ETHERNET); 10 BASE-T (IEEE 802.3); 4/16 Mbps TOKEN RING (IEEE 802.5); 100 VG-Any LAN 55/155 Mbps ATM; 1.2 Gbps ATM (ATM Forum); 622 Mbps ATM (ATM Forum); 1 Gbps Networking System (WGNA); VOICE, ISDN

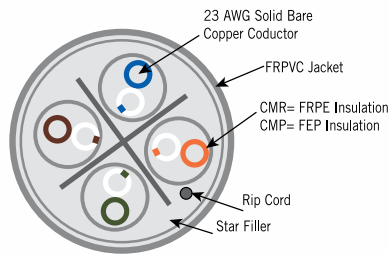
### INDUSTRY APPROVALS - RISER (CMR-CMG)

- ETL Verified ANSI TIA 568-C.2 Category 6
- UL SUBJECT 444
- (UL) c(UL) TYPE CMR/CMG
- ISO/IEC 11801
- NEC® ARTICLE 800 TYPE CMR (UL 1666) OR CM FT4

### CONSTRUCTION - RISER (CMR-CMG)

23 AWG solid bare copper, 4 unshielded twisted pairs, FRPE insulation, star filler, rip cord, FRPVC jacket, operating temperature 75°C, 300 volts

- **Sample Jacket Marking:**  
E118871 4PR 23AWG CMR (UL) c(UL) CMG 75C ETL VERIFIED TO TIA 568-C.2  
CATEGORY 6 550 MHz RoHS COMPLIANT. SEQUENTIAL FOOTAGE MARKING



## PLENUM RATED - CMP

### APPLICATIONS - PLENUM (CMP)

1000 BASE-T (GIGABIT ETHERNET); 100 BASE-T (FAST ETHERNET); 10 BASE-T (IEEE 802.3); 4/16 Mbps TOKEN RING (IEEE 802.5); 100 VG-Any LAN 55/155 Mbps ATM; 1.2 Gbps ATM (ATM Forum); 622 Mbps ATM (ATM Forum); 1 Gbps Networking System (WGNA); VOICE, ISDN

### INDUSTRY APPROVALS - PLENUM (CMP)

- ETL Verified ANSI TIA 568-C.2 CATEGORY 6
- ISO/IEC 11801 Approved For Plenum Use Without Conduit Per NEC Article 800 by passing UL-910 Steiner Tunnel Test and CSA CMP FT6
- UL LISTED CMP(NFPA 262), UL 444

### CONSTRUCTION - PLENUM (CMP)

23 AWG solid bare copper, 4 unshielded twisted pairs, FEP insulation, star filler, rip cord, FRPVC jacket, operating temperature 75°C, 300 volts

- **Sample Jacket Marking:**  
E118871 4PR 23AWG CMP (UL) c(UL) 75C ETL VERIFIED TO TIA 568-C.2  
CATEGORY 6 550 MHz RoHS COMPLIANT. SEQUENTIAL FOOTAGE MARKING

### PACKAGING

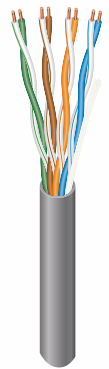
AVAILABLE IN 1000 FT. BOXES OR REELS. REEL-IN-A-BOX UPON REQUEST.  
JACKET COLORS OTHER THAN LISTED CONSULT FACTORY. COLOR CODE:  
(Orange & White/Orange, Green & White/Green, Blue & White/Blue, Brown & White/Brown)

CATEGORY 6 - 550 MHz CABLE - RISER RATED (CMR-CMG)										
TWC PART NUMBER	SW PART NUMBER	DESCRIPTION	AWG	# PAIRS	NOM. DIAM. (inch)	PACKAGING			JACKET COLOR	UL/ NEC®
						TYPE	LENGTH	lbs/1000 ft		
I99998.2A	57789701	CAT6 550 MHz 23/4P SOL BC CMR BLU	23	4	0.240	REELS	1000'	32	BLUE	CMR
I99998.2B	57789702	CAT6 550 MHz 23/4P SOL BC CMR BLU	23	4	0.240	REELEX	1000'	32	BLUE	CMR
I99998.2H	57789703	CAT6 550 MHz 23/4P SOL BC CMR BLU	23	4	0.240	RIBS	1000'	32	BLUE	CMR
I99998.3A	57789801	CAT6 550 MHz 23/4P SOL BC CMR WHT	23	4	0.240	REEL	1000'	32	WHITE	CMR
I99998.3B	57789802	CAT6 550 MHz 23/4P SOL BC CMR WHT	23	4	0.240	REELEX	1000'	32	WHITE	CMR
I99998.3H	57789803	CAT6 550 MHz 23/4P SOL BC CMR WHT	23	4	0.240	RIBS	1000'	32	WHITE	CMR
I99998.4B	57789902	CAT6 550 MHz 23/4P SOL BC CMR YLW	23	4	0.240	RIBS	1000'	32	YELLOW	CMR

CATEGORY 6 - 550 MHz CABLE - PLENUM RATED (CMP)										
TWC PART NUMBER	SW PART NUMBER	DESCRIPTION	AWG	# PAIRS	NOM. DIAM. (inch)	PACKAGING			JACKET COLOR	UL/ NEC®
						TYPE	LENGTH	lbs/1000 ft		
I99997.1A	57789401	CAT6 550 MHz 23/4P SOL BC CMR BLU	23	4	0.230	REELS	1000'	36	BLUE	CMR
I99997.1B	57789402	CAT6 550 MHz 23/4P SOL BC CMR BLU	23	4	0.230	REELEX	1000'	36	BLUE	CMR
I99997.1H	57789403	CAT6 550 MHz 23/4P SOL BC CMR BLU	23	4	0.230	RIBS	1000'	36	BLUE	CMR
I99997.2A	57789501	CAT6 550 MHz 23/4P SOL BC CMR WHT	23	4	0.230	REEL	1000'	36	WHITE	CMR
I99997.2B	57789502	CAT6 550 MHz 23/4P SOL BC CMR WHT	23	4	0.230	REELEX	1000'	36	WHITE	CMR
I99997.2H	57789503	CAT6 550 MHz 23/4P SOL BC CMR WHT	23	4	0.230	RIBS	1000'	36	WHITE	CMR
I99997.3B	57789602	CAT6 550 MHz 23/4P SOL BC CMR YLW	23	4	0.230	RIBS	1000'	36	YELLOW	CMR

CATEGORY 6 - 550 MHz ELECTRICAL PERFORMANCE DATA									
FREQUENCY	ATTENUATION (dB/100m)	NEXT (dB)	ACR (dB)	PSNEXT (dB)	PSACR (dB)	ELFEXT (dB)	PS.ELFEXT (dB)	RETURN LOSS (dB)	CHARACTERISTIC IMPEDANCE (OHMS)
1	2	76.3	74.3	74.3	72.3	67.8	64.8	20	100 ± 15
4	3.8	67.3	63.5	65.3	61.5	55.7	52.7	23	100 ± 15
8	5.3	62.8	57.5	60.8	55.5	49.7	46.7	24.5	100 ± 15
10	6	61.3	55.3	59.3	53.3	47.8	44.8	25	100 ± 15
16	7.6	58.3	50.7	56.3	48.7	43.7	40.7	25	100 ± 15
20	8.5	56.8	48.3	54.8	46.3	41.7	38.7	25	100 ± 15
25	9.5	55.3	45.8	53.3	43.8	39.8	36.8	24.3	100 ± 15
31.25	10.7	53.9	43.2	51.9	41.2	37.9	34.9	23.6	100 ± 15
62.5	15.4	49.4	34	47.4	32	31.8	28.8	21.5	100 ± 15
100	19.8	46.3	26.5	44.3	24.5	27.8	24.8	20.1	100 ± 15
155	25.1	43.5	18.4	41.5	16.4	23.9	20.9	18.8	100 ± 15
200	29	41.8	12.8	39.8	10.8	21.7	18.7	18	100 ± 15
250	32.8	40.3	7.5	38.3	5.5	19.8	16.8	17.3	100 ± 15
300	36.4	39.2	2.8	37.2	0.8	18.2	15.2	16.8	100 ± 15
400	43	37.3	-	35.3	-	15.7	12.7	15.9	100 ± 15
550	51.8	35.2	-	33.2	-	12.9	9.9	14.9	100 ± 15

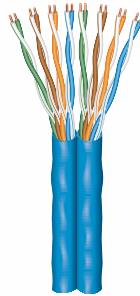
CATEGORY CABLE CATEGORY 6 550 MHz- RISER RATED (CMR/CMG) & PLENUM RATED (CMP)



# CATEGORY CABLE

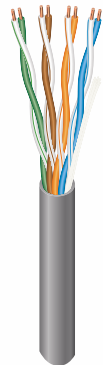
## SPECIALTY CONSTRUCTIONS

DATA/  
TELEPHONE  
CABLE



SIAMESE (DUAL) CATEGORY 5e CABLE - RISER RATED										
TWC PART NUMBER	SW PART NUMBER	DESCRIPTION	AWG	# PAIRS	NOM. DIAM. (inch)	PACKAGING			JACKET COLOR	UL/NEC®
						TYPE	LENGTH	lbs/1000 ft		
1000 BASE-T (GIGABIT ETHERNET);100 BASE-T (FAST ETHERNET); 10 BASE-T (IEEE 802.3); 4/16 MBPS TOKEN RING (IEEE 802.5); 100 VG-ANY LAN; 100 MBPS TP-PMD (ANSI X3T9.5); 55/155 MBPS ATM; VOICE, ISDN, VIDEO TO DESKTOP, MULTIMEDIA. WITH 4/C 16 PREMIUM SPEAKER CABLE FOR AUDIO APPLICATIONS.										
H91868.1A	57577201	(2X) CAT5e SIAMESE BLU	24	8	0.400	REELS	1000'	59	BLUE	CMR

SIAMESE SPEAKER & CATEGORY 5e CABLE										
TWC PART NUMBER	SW PART NUMBER	DESCRIPTION	AWG	# PAIRS	NOM. DIAM. (inch)	PACKAGING			JACKET COLOR	UL/NEC®
						TYPE	LENGTH	lbs/1000 ft		
1000 BASE-T (GIGABIT ETHERNET);100 BASE-T (FAST ETHERNET); 10 BASE-T (IEEE 802.3); 4/16 Mbps TOKEN RING (IEEE 802.5); 100 VG-Any LAN; 100 Mbps TP-PMD (ANSI X3T9.5); 55/155 Mbps ATM; VOICE, ISDN, Video to Desktop, Multimedia. With 4/C 16 Premium Speaker Cable for Audio applications.										
H91761.1C	57577102	CAT5e 24/4P SOL BC+16/4C 65 STR BC SIAMESE	24	COMBO	0.512	REELS	1000'	89	PURPLE	CMR



DIRECT BURIAL CATEGORY 5e CABLE										
TWC PART NUMBER	SW PART NUMBER	DESCRIPTION	AWG	# PAIRS	NOM. DIAM. (inch)	PACKAGING			JACKET COLOR	UL/NEC®
						TYPE	LENGTH	lbs/1000 ft		
1000 BASE-T (GIGABIT ETHERNET);100 BASE-T (FAST ETHERNET); 10 BASE-T (IEEE 802.3); 4/16 Mbps TOKEN RING (IEEE 802.5); 100 VG-Any LAN; 100 Mbps TP-PMD (ANSI X3T9.5); 55/155 Mbps ATM; VOICE, ISDN, Video to Desktop, Multimedia. For Outdoor & Direct Burial.										
H90558.1A	57642901	CAT5e 24/4P SOL BC PE-JKT DIR BUR NU BLK	24	4	0.240	REELS	1000'	28	BLACK	NU
H90558.1C	57642902	CAT5e 24/4P SOL BC PE-JKT DIR BUR NU BLK	24	4	0.240	REELS	500'	28	BLACK	NU

CATEGORY CABLE SPECIALTY CONSTRUCTIONS



# FIRE ALARM CABLE

## RISER RATED

FIRE ALARM  
CABLE



RISER RATED - MULTI-CONDUCTOR UNSHIELDED										
TWC PART NUMBER	SW PART NUMBER	DESCRIPTION	AWG	# COND	NOM. DIAM. (inch)	PACKAGING			JACKET COLOR	UL/NEC®
						TYPE	LENGTH	lbs/1000 ft		
Fire-protective signaling circuits. Sunlight resistant. For use with power-limited circuits, except for those in plenums.										
F20427.1B	57558801	22/4C SOL BC N/S RED	22	4	0.140	REELEX	1000'	14	RED	FPLR/CMR
F40021.1A	57559302	18/2C SOL BC N/S RED	18	2	0.157	REELS	1000'	17	RED	FPLR/CMR
F40021.1B	57559301	18/2C SOL BC N/S RED	18	2	0.157	REELEX	1000'	17	RED	FPLR/CMR
F40021.1C	57559304	18/2C SOL BC N/S RED	18	2	0.157	REELS	500'	17	RED	FPLR/CMR
F40021.1D	57559303	18/2C SOL BC N/S RED	18	2	0.157	REELEX	500'	17	RED	FPLR/CMR
F40021.12A	57559202	18/2C SOL BC N/S WHT	18	2	0.157	REELS	1000'	17	WHITE	FPLR/CMR
F40568.1A	57559002	18/4C SOL BC N/S RED	18	4	0.195	REELS	1000'	30	RED	FPLR/CMR
F40568.1B	57559001	18/4C SOL BC N/S RED	18	4	0.195	REELEX	1000'	30	RED	FPLR/CMR
F40568.1D	57559003	18/4C SOL BC N/S RED	18	4	0.195	REELEX	500'	30	RED	FPLR/CMR
F40566.1A	57559402	18/6C SOL BC N/S RED	18	6	0.204	REELS	1000'	42	RED	FPLR/CMR
F40564.1A	57559502	18/8C SOL BC N/S RED	18	8	0.235	REELS	1000'	55	RED	FPLR/CMR
F50004.1A	57559902	16/2C SOL BC N/S RED	16	2	0.190	REELS	1000'	25	RED	FPLR/CMR
F50004.1B	57559901	16/2C SOL BC N/S RED	16	2	0.190	REELEX	1000'	25	RED	FPLR/CMR
F50004.1C	57559904	16/2C SOL BC N/S RED	16	2	0.190	REELS	500'	25	RED	FPLR/CMR
F50004.1D	57559903	16/2C SOL BC N/S RED	16	2	0.190	REELEX	500'	25	RED	FPLR/CMR
F50004.17B	57559801	16/2C SOL BC N/S wht	16	2	0.190	REELEX	1000'	25	WHITE	FPLR/CMR
F50383.1A	57560102	16/4C SOL BC N/S RED	16	4	0.211	REELS	1000'	44	RED	FPLR/CMR
F50383.1C	57560104	16/4C SOL BC N/S RED	16	4	0.211	REELS	500'	44	RED	FPLR/CMR
F50383.1D	57560103	16/4C SOL BC N/S RED	16	4	0.211	REELEX	500'	44	RED	FPLR/CMR
F60001.1A	57560302	14/2C SOL BC N/S RED	14	2	0.216	REELS	1000'	36	RED	FPLR/CL3R
F60001.1B	57560301	14/2C SOL BC N/S RED	14	2	0.216	REELEX	1000'	36	RED	FPLR/CL3R
F60001.1C	57560304	14/2C SOL BC N/S RED	14	2	0.216	REELS	500'	36	RED	FPLR/CL3R
F60001.1D	57560303	14/2C SOL BC N/S RED	14	2	0.216	REELEX	500'	36	RED	FPLR/CL3R
F60001.2A	57718602	14/2C SOL BC N/S YLW	14	2	0.216	REELS	1000'	36	YELLOW	FPLR/CL3R
F60001.3A	57718702	14/2C SOL BC N/S BLU	14	2	0.216	REELS	1000'	36	BLUE	FPLR/CL3R
F60001.4A	57560402	14/2C SOL BC N/S WHT	14	2	0.216	REELS	1000'	36	WHITE	FPLR/CL3R
F60355.1A	57560802	14/4C SOL BC N/S RED	14	4	0.253	REELS	1000'	66	RED	FPLR/CL3R
F60355.1C	57560804	14/4C SOL BC N/S RED	14	4	0.253	REELS	500'	66	RED	FPLR/CL3R
F70004.1A	57560902	12/2C SOL BC N/S RED	12	2	0.258	REELS	1000'	55	RED	FPLR/CL3R

RISER RATED - MULTI-CONDUCTOR SHIELDED										
TWC PART NUMBER	SW PART NUMBER	DESCRIPTION	AWG	# COND	NOM. DIAM. (inch)	PACKAGING			JACKET COLOR	UL/NEC®
						TYPE	LENGTH	lbs/1000 ft		
Fire-protective signaling circuits. Sunlight resistant. For use with power-limited circuits, except for those in plenums.										
F40015.1A	57559102	18/2C SOL BC OAS RED	18	2	0.157	REELS	1000'	19	RED	FPLR/CMR
F40015.1B	57559101	18/2C SOL BC OAS RED	18	2	0.157	REELEX	1000'	19	RED	FPLR/CMR
F40015.27A	57718402	18/2C SOL BC OAS YLW	18	2	0.157	REELS	1000'	19	YELLOW	FPLR/CMR
F40015.36A	57718502	18/2C SOL BC OAS BLU	18	2	0.157	REELS	1000'	19	BLUE	FPLR/CMR
F40567.1A	57559602	18/4C SOL BC OAS RED	18	4	0.195	REELS	1000'	33	RED	FPLR/CMR
F40565.1B	57559601	18/6C SOL BC OAS RED	18	6	0.204	REELEX	1000'	45	RED	FPLR/CMR
F50010.1A	57560002	16/2C SOL BC OAS RED	16	2	0.190	REELS	1000'	27	RED	FPLR/CMR
F50010.1B	57560001	16/2C SOL BC OAS RED	16	2	0.190	REELEX	1000'	27	RED	FPLR/CMR
F50382.1A	57560202	16/4C SOL BC OAS RED	16	4	0.211	REELS	1000'	46	RED	FPLR/CMR
F60030.1A	57560602	14/2C SOL BC OAS RED	14	2	0.216	REELS	1000'	39	RED	FPLR/CL3R
F60030.1B	57560601	14/2C SOL BC OAS RED	14	2	0.216	REELEX	1000'	39	RED	FPLR/CL3R
F60354.1A	57560702	14/4C SOL BC OAS RED	14	4	0.253	REELS	1000'	69	RED	FPLR/CL3R
F70015.1A	57561102	12/2C SOL BC OAS RED	12	2	0.258	REELS	1000'	57	RED	FPLR/CL3R

FIRE PROTECTIVE SIGNALING - MULTI-CONDUCTOR SHIELDED, NON-POWER LIMITED										
TWC PART NUMBER	SW PART NUMBER	DESCRIPTION	AWG	# COND	NOM. DIAM. (inch)	PACKAGING			JACKET COLOR	UL/NEC®
						TYPE	LENGTH	lbs/1000 ft		
Addressable fire-protective signaling circuits.										
SN4009.1A	57644802	18/2C SOL BC OAS	18	2	0.239	REELS	1000'	34	RED	NPLF



FIRE ALARM CABLE RISER RATED



# FIRE ALARM CABLE

## PLENUM RATED

FIRE ALARM  
CABLES



PLENUM RATED - MULTI-CONDUCTOR UNSHIELDED										
TWC PART NUMBER	SW PART NUMBER	DESCRIPTION	AWG	# COND	NOM. DIAM. (inch)	PACKAGING			JACKET COLOR	UL/NEC®
						TYPE	LENGTH	lbs/1000 ft		
Fire-protective signaling circuits. For use with all power-limited circuits.										
G40005.1A	57561002	18/2C SOL BC N/S RED	18	2	0.145	REELS	1000'	16	RED	FPLP/CMP
G40005.1B	57561001	18/2C SOL BC N/S RED	18	2	0.145	REELEX	1000'	16	RED	FPLP/CMP
G40005.1D	57561003	18/2C SOL BC N/S RED	18	2	0.145	REELEX	500'	16	RED	FPLP/CMP
G40005.39A	57561202	18/2C SOL BC N/S YLW	18	2	0.145	REELS	1000'	16	YELLOW	FPLP/CMP
G40505.1A	57561502	18/4C SOL BC N/S RED	18	4	0.183	REELS	1000'	29	RED	FPLP/CMP
G40503.1A	57561602	18/6C SOL BC N/S RED	18	6	0.192	REELS	1000'	41	RED	FPLP/CMP
G50032.1A	57561902	16/2C SOL BC N/S RED	16	2	0.170	REELS	1000'	24	RED	FPLP/CMP
G50032.1B	57561901	16/2C SOL BC N/S RED	16	2	0.170	REELEX	1000'	24	RED	FPLP/CMP
G50032.1C	57561904	16/2C SOL BC N/S RED	16	2	0.170	REELS	500'	24	RED	FPLP/CMP
G50032.9A	57719502	16/2C SOL BC N/S WHT	16	2	0.170	REELS	1000'	24	WHITE	FPLP/CMP
G50032.11A	57719402	16/2C SOL BC N/S YLW	16	2	0.170	REELS	1000'	24	YELLOW	FPLP/CMP
G50032.24A	57562002	16/2C SOL BC N/S GRN	16	2	0.170	REELS	1000'	24	GREEN	FPLP/CMP
G50370.1A	57562202	16/4C SOL BC N/S RED	16	4	0.199	REELS	1000'	43	RED	FPLP/CMP
G50370.1C	57562204	16/4C SOL BC N/S RED	16	4	0.199	REELS	500'	43	RED	FPLP/CMP
G60004.1A	57562402	14/2C SOL BC N/S RED	14	2	0.204	REELS	1000'	35	RED	FPLP/CL3P
G60004.1C	57562404	14/2C SOL BC N/S RED	14	2	0.204	REELS	500'	35	RED	FPLP/CL3P
G60004.2A	57720002	14/2C SOL BC N/S WHT	14	2	0.204	REELS	1000'	35	WHITE	FPLP/CL3P
G60004.3A	57720102	14/2C SOL BC N/S BLK	14	2	0.204	REELS	1000'	35	BLACK	FPLP/CL3P
G60004.13A	57719602	14/2C SOL BC N/S ORG	14	2	0.204	REELS	1000'	35	ORANGE	FPLP/CL3P
G60004.22A	57719802	14/2C SOL BC N/S BLU	14	2	0.204	REELS	1000'	35	BLUE	FPLP/CL3P
G60004.23A	57719902	14/2C SOL BC N/S YLW	14	2	0.204	REELS	1000'	35	YELLOW	FPLP/CL3P
G60210.1A	57720402	14/2C STR BC BLK/RED N/S RED	14	2	0.220	REELS	1000'	37	RED	FPLP/CL3P
G60347.1A	57562602	14/4C SOL BC N/S RED	14	4	0.241	REELS	1000'	66	RED	FPLP/CL3P
G70009.1A	57562802	22/2P STR TC EPS(CD)	12	2	0.246	REELS	1000'	53	RED	FPLP/CL3P
G70090.1A	57720602	12/2C STR BC BLK/RED N/S RED	12	2	0.264	REELS	1000'	56	RED	FPLP/CL3P

PLENUM RATED - MULTI-CONDUCTOR SHIELDED										
TWC PART NUMBER	SW PART NUMBER	DESCRIPTION	AWG	# COND	NOM. DIAM. (inch)	PACKAGING			JACKET COLOR	UL/NEC®
						TYPE	LENGTH	lbs/1000 ft		
Fire-protective signaling circuits. For use with all power-limited circuits.										
G40006.1A	57561402	18/2C SOL BC OAS RED	18	2	0.145	REELS	1000'	18	RED	FPLP/CMP
G40006.1B	57561401	18/2C SOL BC OAS RED	18	2	0.145	REELEX	1000'	18	RED	FPLP/CMP
G40006.50A	57718802	18/2C SOL BC OAS BLU	18	2	0.145	REELS	1000'	18	BLUE	FPLP/CMP
G40006.51A	57719002	18/2C SOL BC OAS YLW	18	2	0.145	REELS	1000'	18	YELLOW	FPLP/CMP
G40006.52A	57719102	18/2C SOL BC OAS RED	18	2	0.145	REELS	1000'	18	RED	FPLP/CMP
G40504.1A	57793102	18/4C SOL BC OAS RED	18	4	0.183	REELS	1000'	32	RED	FPLP/CMP
G50013.1A	57561802	16/2C SOL BC OAS RED	16	2	0.170	REELS	1000'	26	RED	FPLP/CMP
G50013.1B	57561801	16/2C SOL BC OAS RED	16	2	0.170	REELEX	1000'	26	RED	FPLP/CMP
G50013.13A	57719202	16/2C SOL BC OAS WHT	16	2	0.170	REELS	1000'	26	WHT	FPLP/CMP
G50369.1A	57562302	16/4C SOL BC OAS RED	16	4	0.199	REELS	1000'	45	RED	FPLP/CMP
G60025.1A	57562502	14/2C SOL BC OAS RED	14	2	0.204	REELS	1000'	38	RED	FPLP/CMP
G60025.1B	57562501	14/2C SOL BC OAS RED	14	2	0.204	REELEX	1000'	38	RED	FPLP/CMP
G60346.1A	57562702	14/4C SOL BC OAS RED	14	4	0.241	REELS	1000'	68	RED	FPLP/CL3P
G70019.1A	57644602	12/2C SOL BC OAS RED	12	2	0.246	REELS	1000'	56	RED	FPLP/CL3P

MID CAP - MULTI-CONDUCTOR OVERALL SHIELDED - PLENUM RATED										
TWC PART NUMBER	SW PART NUMBER	DESCRIPTION	AWG	# COND	NOM. DIAM. (inch)	PACKAGING			JACKET COLOR	UL/NEC®
						TYPE	LENGTH	lbs/1000 ft		
Addressable fire-protective signaling circuits.										
J40002.1A	57584402	18/2C SOL BC OAS RED MID-CAP	18	2	0.157	REELS	1000'	21	RED	FPLP/CMP



FIRE ALARM CABLE PLENUM RATED

# CATV COAXIAL CABLE

## CATV COAXIAL CABLE

CATV COAXIAL CABLE

NON-PLENUM RATED RG6 QUAD SHIELD CATV COAX CABLE										
TWC PART NUMBER	SW PART NUMBER	DESCRIPTION	AWG	# COND	NOM. DIAM. (inch)	PACKAGING			JACKET COLOR	UL/NEC®
						TYPE	LENGTH	lbs/1000 ft		
Audio/video, radio frequency, CATV-MATV, computer/data processing transmissions. Sunlight resistant. For general purpose use except in risers and plenums.										
C40065.1A	57570201	RG6 18CCS QUAD-40/60AL CATV WHT	18	1	0.298	REELS	1000'	37	WHITE	CM/CL2
C40065.1B	57570203	RG6 18CCS QUAD-40/60AL CATV WHT	18	1	0.298	REELEX	1000'	37	WHITE	CM/CL2
C40065.1D	57570204	RG6 18CCS QUAD-40/60AL CATV WHT	18	1	0.298	REELEX	500'	37	WHITE	CM/CL2
C40065.3B	57570303	RG6 18CCS QUAD-40/60AL CATV YLW	18	1	0.298	REELEX	1000'	37	YELLOW	CM/CL2
C40065.5A	57570101	RG6 18CCS QUAD-40/60AL CATV BLK	18	1	0.298	REELS	1000'	37	BLACK	CM/CL2
C40065.5B	57570103	RG6 18CCS QUAD-40/60AL CATV BLK	18	1	0.298	REELEX	1000'	37	BLACK	CM/CL2
C40065.5C	57570102	RG6 18CCS QUAD-40/60AL CATV BLK	18	1	0.298	REELS	500'	37	BLACK	CM/CL2
C40065.5D	57570104	RG6 18CCS QUAD-40/60AL CATV BLK	18	1	0.298	REELEX	500'	37	BLACK	CM/CL2

RISER RATED RG6 QUAD SHIELD CATV COAX CABLE										
TWC PART NUMBER	SW PART NUMBER	DESCRIPTION	AWG	# COND	NOM. DIAM. (inch)	PACKAGING			JACKET COLOR	UL/NEC®
						TYPE	LENGTH	lbs/1000 ft		
Audio/video, radio frequency, CATVR-MATVR, computer/data processing transmissions. Sunlight resistant. For general purpose use except in plenums.										
C40093.1A	57569501	RG6 18 SOL BC QUAD-40/60AL CATV BLK	18	1	0.298	REELS	1000'	38	BLACK	CM//CL2
C40093.1B	57569503	RG6 18 SOL BC QUAD-40/60AL CATV BLK	18	1	0.298	REELEX	1000'	38	BLACK	CM/CL2
C40093.5B	57569703	RG6 18SOL BC QUAD-40/60AL CATV WHT	18	1	0.298	REELEX	1000'	38	WHITE	CM/CL2
C40192.1A	57574501	RG6 18 CCS QUAD-40/60AL CATV BLK	18	1	0.298	REELS	1000'	37	BLACK	CMR/CL2R

PLENUM RATED RG6 QUAD SHIELD CATV COAX CABLE										
TWC PART NUMBER	SW PART NUMBER	DESCRIPTION	AWG	# COND	NOM. DIAM. (inch)	PACKAGING			JACKET COLOR	UL/NEC®
						TYPE	LENGTH	lbs/1000 ft		
Audio/video, radio frequency, CATV-MATV, computer/data processing transmissions. Sunlight resistant. For general purpose use.										
D40017.1A	57569401	RG6 18 SOL-BC QUAD-40/60AL CATV PLEN-CMP WHT	18	1	0.264	REELS	1000'	36	WHITE	CMP/ CL2P
D40019.1A	57574701	RG6 18 CCS QUAD-40/60AL CATV PLEN-CMP BLK	18	1	0.258	REELS	1000'	34	BLACK	CMP/CL2P
D40019.2A	57574401	RG6 18 CCS QUAD-40/60AL CATV PLEN-CMP WHT	18	1	0.258	REELS	1000'	34	WHITE	CMP/CL2P

RG6 DUAL SHIELD CATV COAX CABLE										
TWC PART NUMBER	SW PART NUMBER	DESCRIPTION	AWG	# COND	NOM. DIAM. (inch)	PACKAGING			JACKET COLOR	UL/NEC®
						TYPE	LENGTH	lbs/1000 ft		
Audio/video, radio frequency, catv matv, computer/data processing transmissions. Sunlight resistant.										
D90011.1A	57574801	RG11 14CCS 60AL CATV WHT	14	1	0.345	REELS	1000'	74	WHITE	CL3P
C60008.1A	57584001	RG11 14CCS FOIL/GOAL CATV CL3 BLK	14	1	0.390	REELS	1000'	70	BLACK	CL3

RG6 DUAL SHIELD CATV COAX CABLE										
TWC PART NUMBER	SW PART NUMBER	DESCRIPTION	AWG	# COND	NOM. DIAM. (inch)	PACKAGING			JACKET COLOR	UL/NEC®
						TYPE	LENGTH	lbs/1000 ft		
Audio/video, radio frequency, CATVR-MATVR, computer/data processing transmissions. Sunlight resistant. For general purpose use except in plenums.										
C40055.1A	57569801	RG6 18CCS 60AL CATV CM BLK	18	1	0.270	REELS	1000'	32	BLACK	CM/CL2
C40055.1B	57569803	RG6 18CCS 60AL CATV CM BLK	18	1	0.270	REELEX	1000'	32	BLACK	CM/CL2
C40055.1C	57569802	RG6 18CCS 60AL CATV CM BLK	18	1	0.270	REEL	500'	32	BLACK	CM/CL2
C40055.1D	57569804	RG6 18CCS 60AL CATV CM BLK	18	1	0.270	REELEX	500'	32	BLACK	CM/CL2
C40055.2A	57569901	RG6 18CCS 60AL CATV CM WHT	18	1	0.270	REELS	1000'	32	WHITE	CM/CL2
C40055.2B	57569903	RG6 18CCS 60AL CATV CM WHT	18	1	0.270	REELEX	1000'	32	WHITE	CM/CL2
C40055.2D	57569904	RG6 18CCS 60AL CATV CM WHT	18	1	0.270	REELEX	500'	32	WHITE	CM/CL2
C40079.1A	57570001	RG6 18CCS 60AL CATV RISER BLK	18	1	0.270	REELS	1000'	33	BLACK	CMR/CL2R



PLENUM RATED RG6 DUAL SHIELD CATV COAX CABLE										
TWC PART NUMBER	SW PART NUMBER	DESCRIPTION	AWG	# COND	NOM. DIAM. (inch)	PACKAGING			JACKET COLOR	UL/NEC®
						TYPE	LENGTH	lbs/1000 ft		
Audio/video, radio frequency, catvp-matv and computer/data processing transmissions for general purpose use.										
D40018.1A	57787101	RG6 18 CCS FOIL/60AL CATV WHT	18	1	0.222	REELS	1000'	31	WHITE	CMP/CL2P
D40046.1A	57569301	RG6 18 SOL-BC 90AL CATV WHT	18	1	0.232	REELS	1000'	33	WHITE	CMP/CL2P

NON-PLENUM RATED CATV UNDERGROUND & OUTDOOR USE										
TWC PART NUMBER	SW PART NUMBER	DESCRIPTION	AWG	# COND	NOM. DIAM. (inch)	PACKAGING			JACKET COLOR	UL/NEC®
						TYPE	LENGTH	lbs/1000 ft		
Audio/video wiring intended for outdoor, underground, or use in conduits. Sunlight resistant.										
SU4020.1A	57644901	RG6 18CCS FOIL/60 PE DB	18	1	0.270	REELS	1000'	26	BLACK	NU

NON-PLENUM RATED RG59 TYPE CCTV COAX CABLE											
TWC PART NUMBER	SW PART NUMBER	DESCRIPTION	AWG	# COND/ # PAIRS	NOM. DIAM. (inch)	PACKAGING			JACKET COLOR	UL/NEC®	
						TYPE	LENGTH	lbs/1000 ft			
For closed circuit television (CCTV) - video transmissions within a single unshielded twisted pair (UTP) cable. For general purpose use except in risers and plenums.											
C30022.1A	57575701	RG59 20 SOL-BC 95BC CCTV BLK	20	1	0.240	REELS	1000'	36	BLACK	CM/CL2	
C30022.1B	57575703	RG59 20 SOL-BC 95BC CCTV BLK	20	1	0.240	REELEX	1000'	36	BLACK	CM/CL2	
C30022.1D	57575704	RG59 20 SOL-BC 95BC CCTV BLK	20	1	0.240	REELEX	500'	36	BLACK	CM/CL2	
C30022.9A	57575801	RG59 20 SOL-BC 95BC CCTV WHT	20	1	0.240	REELS	1000'	36	WHITE	CM/CL2	
C30022.9B	57575803	RG59 20 SOL-BC 95BC CCTV WHT	20	1	0.240	REELEX	1000'	36	WHITE	CM/CL2	
C30022.9D	57575804	RG59 20 SOL-BC 95BC CCTV WHT	20	1	0.240	REELEX	500'	36	WHITE	CM/CL2	

PLENUM RATED RG59 TYPE CCTV COAX CABLE											
TWC PART NUMBER	SW PART NUMBER	DESCRIPTION	AWG	# COND/ # PAIRS	NOM. DIAM. (inch)	PACKAGING			JACKET COLOR	UL/NEC®	
						TYPE	LENGTH	lbs/1000 ft			
For closed circuit television (CCTV) - video transmissions within a single unshielded twisted pair (UTP) cable. For general purpose use and plenums.											
D30009.1A	57575901	RG59 20 SOL-BC 95BC CCTV WHT	20	1	0.193	REELS	1000'	31	WHITE	CMP/CL2P	
D30009.1B	57575903	RG59 20 SOL-BC 95BC CCTV WHT	20	1	0.193	REELEX	1000'	31	WHITE	CMP/CL2P	
D30009.1C	57575902	RG59 20 SOL-BC 95BC CCTV WHT	20	1	0.193	REELS	500'	31	WHITE	CMP/CL2P	
D30009.1D	57575904	RG59 20 SOL-BC 95BC CCTV WHT	20	1	0.193	REELEX	500'	31	WHITE	CMP/CL2P	



NON-PLENUM RATED RG6 TYPE CCTV COAX CABLE											
TWC PART NUMBER	SW PART NUMBER	DESCRIPTION	AWG	# COND	NOM. DIAM. (inch)	PACKAGING			JACKET COLOR	UL/NEC®	
						TYPE	LENGTH	lbs/1000 ft			
For closed circuit television (CCTV) - video transmissions within a single unshielded twisted pair (UTP) cable. For general purpose use except in risers and plenums.											
C40009.1A	57575501	RG6 18 SOL-BC 95BC CCTV BLK	18	1	0.270	REELS	1000'	44	BLACK	CM/CL2	
C40009.1B	57575503	RG6 18 SOL-BC 95BC CCTV BLK	18	1	0.270	REELEX	1000'	44	BLACK	CM/CL2	
C40009.1D	57575504	RG6 18 SOL-BC 95BC CCTV BLK	18	1	0.270	REELEX	500'	44	BLACK	CM/CL2	



PLENUM RATED RG6 TYPE CCTV COAX CABLE											
TWC PART NUMBER	SW PART NUMBER	DESCRIPTION	AWG	# COND	NOM. DIAM. (inch)	PACKAGING			JACKET COLOR	UL/NEC®	
						TYPE	LENGTH	lbs/1000 ft			
For closed circuit television (CCTV) - video transmissions within a single unshielded twisted pair (UTP) cable. For general purpose use and plenums.											
D40012.1A	57575601	RG6 18 SOL-BC 95BC CCTV WHT	18	1	0.221	REELS	1000'	40	WHITE	CMP/CL2P	
D40012.1B	57575603	RG6 18 SOL-BC 95BC CCTV WHT	18	1	0.221	REELEX	1000'	40	WHITE	CMP/CL2P	



NON-PLENUM RATED RG6 TYPE CCTV COAX CABLE - DIRECT BURIAL											
TWC PART NUMBER	SW PART NUMBER	DESCRIPTION	AWG	# COND	NOM. DIAM. (inch)	PACKAGING			JACKET COLOR	UL/NEC®	
						TYPE	LENGTH	lbs/1000 ft			
Audio/video wiring for outdoor, underground, aerial, or for use in conduits. Sunlight resistant.											
SU4008.1A	57575401	RG6 18 SOL-BC 95BC BLK PE DB	18	1	0.270	REELS	1000'	38	BLACK	NU	



SIAMESE CCTV COMBINATION COAX CABLE - NON-PLENUM RATED										
TWC PART NUMBER	SW PART NUMBER	DESCRIPTION	AWG	# COND	NOM. DIAM. (inch)	PACKAGING			JACKET COLOR	UL/NEC®
						TYPE	LENGTH	lbs/1000 ft		
For closed circuit television (CCTV) - video, power signals within a single unshielded twisted pair (UTP) cable. For general purpose use except in plenums and risers.										
H90369.1A	57576501	RG59 95BC+18/2C STR BC SIAMESE BLK	18	COMBO	0.240	REELS	1000'	46	BLACK	CM/CL2
H90369.1I	57576506	RG59 95BC+18/2C STR BC SIAMESE BLK	18	COMBO	0.240	RIBS	500'	46	BLACK	CM/CL2
H90369.4A	57720701	RG59 95BC+18/2C STR BC SIAMESE WHT	18	COMBO	0.240	REELS	1000'	46	WHITE	CM/CL2
H90369.4I	57720706	RG59 95BC+18/2C STR BC SIAMESE WHT	18	COMBO	0.240	RIBS	500'	46	WHITE	CM/CL2
H90767.1A	57576701	RG6 95BC+18/2C STR BC SIAMESE BLK	18	COMBO	0.266	REELS	1000'	55	BLACK	CM/CL2



SIAMESE CCTV COMBINATION COAX CABLE - PLENUM RATED										
TWC PART NUMBER	SW PART NUMBER	DESCRIPTION	AWG	# COND	NOM. DIAM. (inch)	PACKAGING			JACKET COLOR	UL/NEC®
						TYPE	LENGTH	lbs/1000 ft		
For closed circuit television (CCTV) - video, power signals within a single unshielded twisted pair (UTP) cable. For general purpose use and plenums.										
H90224.1A	57576301	RG59 95BC+18/2C STR BC SIAMESE WHT	18	COMBO	0.193	REELS	1000'	43	WHITE	CMP/CL3P
H90224.1C	57576302	RG59 95BC+18/2C STR BC SIAMESE WHT	18	COMBO	0.193	REELS	500'	43	WHITE	CMP/CL3P
H90224.3A	57576401	RG59 95BC+18/2C STR BC SIAMESE BLK	18	COMBO	0.193	REELS	1000'	43	BLACK	CMP/CL3P
H90794.1A	57576801	RG6 95BC+18/2C STR BC SIAMESE WHT	18	COMBO	0.221	REELS	1000'	53	WHITE	CMP/CL2P

RG6 TYPE PRECISION VIDEO COAX CABLE										
TWC PART NUMBER	SW PART NUMBER	DESCRIPTION	AWG	# COND	NOM. DIAM. (inch)	PACKAGING			JACKET COLOR	UL/NEC®
						TYPE	LENGTH	lbs/1000 ft		
High-end home theater, HDTV, production, satellite, analog and digital broadcast, for general purpose use except in plenums.										
C40181.1D	57575204	RG6 18 SOL-BC FOIL/95TC 3GHZ	18	1	0.270	REELEX	500'	38	BLACK	CMR

MINI PRECISION VIDEO COAX CABLE										
TWC PART NUMBER	SW PART NUMBER	DESCRIPTION	AWG	# COND	NOM. DIAM. (inch)	PACKAGING			JACKET COLOR	UL/NEC®
						TYPE	LENGTH	lbs/1000 ft		
High-end home theater, HDTV, production, satellite, analog and digital broadcast, for general purpose use except in plenums.										
C90004.1B	57575003	RG59 23 SOL BC FOIL/95TC MINI BLK	23	1	0.151	REELEX	1000'	16	BLACK	CM
C90004.2B	57575103	RG59 23 SOL BC FOIL/95TC MINI WHT	23	1	0.151	REELEX	1000'	16	WHITE	CM



# SPECIAL APPLICATIONS CABLE

## SPECIAL APPLICATIONS CABLE

MULTI-MEDIA CABLE UL RATED										
TWC PART NUMBER	SW PART NUMBER	DESCRIPTION	AWG	# COND/ # PAIRS	NOM. DIAM. (inch)	PACKAGING			JACKET COLOR	UL/NEC®
						TYPE	LENGTH	lbs/1000 ft		
Residential, voice, video, and data cabling. For use with power-limited circuits except those in risers and plenums.										
H90357.1	57642801	RG6 18 QUAD-60/40AL+(2X) CAT5E 24/4P CM GRN	MULTI	MULTI	0.602	REELS	1000'	115	GREEN	CM/CL2

SPECIAL APPLICATIONS CABLE