

CAT#	A	B
277	1.752	.654

NO BOLT FIXTURE STUD

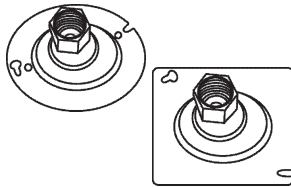
TOPAZ CAT #	UPC#	SIZE	UNIT CTN	SHIP CASE	ZINC DIE CAST WT/ CASE
277	17730	1/8" F X 3/8" M	—	100	3



CAT#	A	B
278	.625	.20
279	.715	.20
280	1.00	.22

FIXTURE LOCKNUTS

TOPAZ CAT #	UPC#	SIZE	UNIT CTN	SHIP CASE	STEEL WT/ CASE
278	11710	1/8"	100	1000	1
279	11720	1/4"	100	1000	1
280	12290	3/8" SQUARE - HEAVY	—	200	5



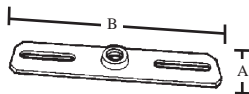
CAT#	
33R	FITS 4" OCTAGON
34S	FITS 4" SQUARE

FLEXIBLE FIXTURE HANGERS

20° SWING FROM VERTICAL

- SUPPORTS WEIGHT 50 LBS.
- BALL TYPE SWIVEL

TOPAZ CAT #	UPC#	SIZE	UNIT CTN	SHIP CASE	STEEL WT/ CASE
33R	10071	1/2" OR 3/4" ROUND	—	25	15
34S	10072	1/2" OR 3/4" SQUARE	—	25	18

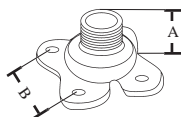


CAT#	A	B
46	1.00	4.12

FIXTURE HANGER

- WITH GREEN GROUND SCREW
- CROSS BAR FITS ALL STANDARD SWITCH BOXES & 3-1/4" & 4" OUTLET BOXES

TOPAZ CAT #	UPC#	SIZE	UNIT CTN	SHIP CASE	STEEL WT/ CASE
46	14170	1/8" FEMALE	—	100	4



CAT#	A	B
47	1.00	1.10

TOPAZ CAT #	UPC#	SIZE	UNIT CTN	SHIP CASE	MALLEABLE IRON WT/ CASE
47	14171	CROWS FOOT	25	250	8

