

RECOVERY.GOV



PROGRESS LIGHTING'S GUIDE TO ARRA:
The American Recovery Reinvestment Act of 2009



TABLE OF CONTENTS

What is the ARRA?	1
Level 1: Substantially transformed in a Free Trade Agreement country	3
Level 2: Substantially transformed in the U.S.	14
Level 3: Over 50% U.S. Content	18



HOW THE ARRA AFFECTS YOU

Progress Lighting is committed to providing clear information on how The American Recovery Reinvestment Act of 2009 (ARRA), a law signed by President Barack Obama in an effort to stimulate America's economy, affects you.

WHAT IS ARRA?

ARRA stands for "The American Recovery Reinvestment Act of 2009 (ARRA)." The ARRA stimulus package has appropriated more than \$700 billion in funds towards federal tax relief, expansion of unemployment benefits and domestic spending in education, healthcare and infrastructure.

The nature of ARRA is to sustain America's economy and environment not only for today, but in the long run.

Created to support sustainable programs, increase jobs and jump start economic activity, ARRA stimulus funds are also designed to inspire projects that contain long-term public benefits rather than fuel short-term spikes in the economy. Another important component of ARRA is that transparency is key, and that each taxpayer dollar is subject to the highest levels of accountability.

PROGRESS LIGHTING & ARRA

Unprecedented level of government initiatives, as well as improvements in sustainable materials have lead to heightened demand for green building practices. At Progress Lighting, we make it our business as industry leaders to deliver viable energy efficient solutions to our partners – and will continue to invest in research and development for the future.

Progress Lighting, the #1 recognized residential lighting brand in the homebuilding industry today, offers a wide variety of interior and exterior lighting fixtures that are compliant with the energy legislation designated for ARRA funded projects.

NAVIGATING THE GUIDELINES OF ARRA

We understand that navigating the guidelines of ARRA is not only challenging, but time consuming as well. Therefore, we are offering you the product information and the educational tools needed to satisfy these stringent ARRA requirements.

Progress Lighting is 100% committed to supporting government efforts to reduce our impact on the environment. Our sustainable lighting solutions can help you qualify for federal funding of your projects. Visit us online at www.progresslighting.com for more information.

BUY AMERICAN

Originally passed by President Herbert Hoover in 1933, the Buy America Act (BAA) was created to stimulate the economy by regulating how government agencies purchased good and services. The American Recovery and Reinvestment Act of 2009 has its own unique Buy American requirements with significant differences from past versions.

BAA & PROGRESS LIGHTING PRODUCTS

The ARRA of 2009 includes a number of regulations to be enforced in Federal government contracts. Among these provisions is Section 1605, entitled "Buy American." For manufactured components, such as the lighting products Progress Lighting manufactures.

LIGHTING MANUFACTURERS:

- There are no restrictions on the value of components and their country of origin.
- There are no restrictions on the country of origin of the steel used in making our fixtures.

TWO VERSIONS OF 'BUY AMERICAN'

The ARRA of 2009 has two versions of Buy American requirements that can be applied for individual stimulus projects. Determining which of these versions your project must meet depends on:

- The size of the project
- Whether the goods are purchased on a construction contract (goods purchased through contractor)
- Whether the goods are purchased on a supplies contract (goods purchased directly by the government agency)

Depending on their location of manufacture, products qualify for different requirements in the BAA. The main groups are:

LEVEL 1	LEVEL 2	LEVEL 3*
<p>Manufactured (substantially transformed) in Free Trade Agreement countries.</p> <p>APPLICABLE FAR CLAUSES: For ARRA funded projects: 52.225-23</p> <p>For Other US Government Projects: 52.225-5 52.225-11 (2009 Version)</p> <p>Any product listed as Free Trade Agreement Transformed, US Transformed or 50% US Content will comply.</p>	<p>Manufactured (substantially transformed) in the United States.</p> <p>APPLICABLE FAR CLAUSES: For ARRA funded projects: 52.225-21</p> <p>For Other US Government Projects: 52.225-1 52.225-9 (2009 Version)</p> <p>Any product listed as US Transformed or 50% US Content will comply.</p>	<p>Manufactured (substantially transformed) in the US with 50% components by cost from the US.</p> <p>APPLICABLE FAR CLAUSES: Pre-2009 FAR versions requiring 50% components by cost from the US for non-ARRA funded US Government projects: 52.225-1 (Pre-2009 version) 52.225-9 (Pre-2009 version) 52.225-11 (Pre-2009 version)</p> <p>Only those products listed as 50% US Content will comply. Some pre-February 2009 contracts still require LEVEL 3 products</p>

Progress Lighting offers products that meet each of the three levels of requirements. It is vital that the correct, actual contract requirements are known for any given project. Refer to the Federal Acquisition Regulations clauses in the project's prime contract to determine actual project requirements.

LEVEL 1: SUBSTANTIALLY TRANSFORMED IN A FREE TRADE AGREEMENT COUNTRY



P183-26DM
Recessed
One CFL 4-Pin lamp,
each 26w.



P183-26EB
Recessed
One CFL 4-Pin lamp,
each 26w.



P183-EB
Recessed
One GX24q-2, 4-pin
lamp, each 18w.



P184-TG
Recessed



P185-TG
Recessed



P186-TG
Recessed



P187-TG
Recessed



P245-TG
Recessed



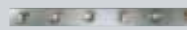
P3114-15
Broadway
Three Medium Base
lamps, each 60w
max.



P3115-15
Broadway
Four Medium Base
lamps, each 60w
max.



P3116-15
Broadway
Five Medium Base
lamps, each 60w
max.



P3117-15
Broadway
Six Medium Base
lamps, each 60w
max.



P3118-15
Broadway
Eight Medium Base
lamps, each 60w
max.



P3298-15
Broadway
Four Medium Base
lamps, each 60w
max.



P3298-30
Broadway
Four Medium Base
lamps, each 60w
max.



P3299-15
Broadway
Six Medium Base
lamps, each 60w
max.



P3300-15
Broadway
Eight Medium Base
lamps, each 60w
max.



P3300-30
Broadway
Eight Medium Base
lamps, each 60w
max.



P3333-15
Broadway
Three Medium Base
lamps, each 60w
max.



P3333-30
Broadway
Three Medium Base
lamps, each 60w
max.



P3335-15
Broadway
Five Medium Base
lamps, each 60w
max.

LEVEL 1: SUBSTANTIALLY TRANSFORMED IN A FREE TRADE AGREEMENT COUNTRY



P3335-30
Broadway
Five Medium Base
lamps, each 60w
max.



P4971-30
Square Glass
Two Medium Base
lamps, each 60w
max.



P4975-30
Square Glass
Three Medium Base
lamps, each 60w
max.



P5-TG
Recessed
One Triple 4-pin
Comp. Fl. lamp, each
26w, 32w, or 42w.



P5066-31
Newport
One Medium Base
lamp, each 100w
max.



P5229-31
Well Lights
One PAR 36 lamp,
each 75w max.



P5390-31
Outdoor Posts



P5390-31PC
Outdoor Posts



P5391-30
Outdoor Posts



P5391-31
Outdoor Posts



P5391-31PC
Outdoor Posts



P5392-31PC
Outdoor Posts



P5626-60
Acrylic Globe
One Medium Base
lamp, each 100w
max.



P5636-60
Acrylic Globe
One Medium Base
lamp, each 150w
max.



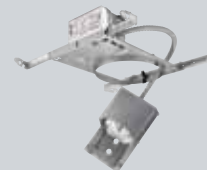
P5666-31
Newport
One Medium Base
lamp, each 100w
max.



P6132-EB
6" Pro-Optic
Fluorescent Housing
One Triple Tube CFL
lamp, each 26w,
32w, or 42w.



P62-FB
Recessed



P63-EB
Recessed
Two Quad 4-pin
Comp. Fl. lamps,
each 13w.



P63-EBFB
Recessed
Two Twin 4-pin
Comp. Fl. lamps,
each 13w.



P632-EB
Recessed



P6414-30TG
Complete Square
Housing & Trim
One Medium Base
lamp, each 100w
max.

LEVEL 1: SUBSTANTIALLY TRANSFORMED IN A FREE TRADE AGREEMENT COUNTRY



P6416-30TG
Complete Square
Housing & Trim
One Medium Base
lamp, each 150w
max.



P645-AT
Recessed



P645-TG
Recessed



P66-DM
Recessed
Two Quad 4-pin
Comp. Fl. lamps,
each 26w.



P66-EB
Recessed
Two Quad 4-pin
Comp. Fl. lamps,
each 26w.



P66-EBFB
Recessed
Two Quad 4-pin
Comp. Fl. lamps,
each 26W.



P6625-30
Step Baffle Trim



P68-EB
Recessed
Two Quad 4-pin
Comp. Fl. lamps,
each 18w.



P68-EB
Recessed
Two Quad 4-pin
Comp. Fl. lamps,
each 18w.



P68-EBFB
Recessed
Two Quad 4-pin
Comp. Fl. lamps,
each 18w.



P6820-30TG
Step Lights
One Medium Base
lamp, each 60w
max.



P6820-31TG
Step Lights
One Medium Base
lamp, each 60w
max.



P6820-31TG
Step Lights
One Medium Base
lamp, each 60w
max.



P6821-30
Step Lights
One Twin 2-pin
Comp. Fl. lamp, each
7w or 9w.



P6824-30
Step Lights
One Twin 2-pin
Comp. Fl. lamp, each
7w or 9w.



P6825-30
Step Lights
One Twin 2-pin
Comp. Fl. lamp, each
7w or 9w.



P6826-30
Step Lights
One Twin 2-pin
Comp. Fl. lamp, each
7w or 9w.



P6827-09
LED Step Light
Three LED lamps,
each 5w.



P6827-30
LED Step Light
Three LED lamps,
each 5w.



P6828-09
LED Step Light
Three LED lamps,
each 5w.



P6828-30
LED Step Light
Three LED lamps,
each 5w.

LEVEL 1: SUBSTANTIALLY TRANSFORMED IN A FREE TRADE AGREEMENT COUNTRY



P6829-09
LED Step Light
Three LED lamps,
each 5w.



P6829-20
LED Step Light
Three LED lamps,
each 5w.



P6829-30
LED Step Light
Three LED lamps,
each 5w.



P6829-31
LED Step Light
Three LED lamps,
each 5w.



P6832-09
LED Step Light
One LED lamp,
each 5w.
(Shown in Black)



P6832-20
LED Step Light
One LED lamp,
each 5w.
(Shown in Black)



P6832-30
LED Step Light
One LED lamp,
each 5w.
(Shown in Black)



P6832-31
LED Step Light
One LED lamp,
each 5w.



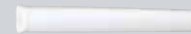
P6917-TG
Complete Round
Housing & Trim
One BR-30 lamp,
each 45w max.



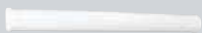
P6952-16TG
Complete Round
Housing & Trim
One R-40 lamp, each
250w max.



P7094-30EB
Linear Fluorescent
Bath
Two F17T8 lamps,
each 17w.



P7095-30EB
Linear Fluorescent
Bath
Two F25T8 lamps,
each 25w .



P7096-30EB
Linear Fluorescent
Bath
Two F32T8 lamps,
each 32w.



P7110-30
Energy Efficient Wall
Sconces
One Twin 2-pin
Comp. Fl. lamp, each
13w.



P7111-30
Energy Efficient Wall
Sconces
Two Twin 2-pin
Comp. Fl. lamps,
each 13w.



P7128-30EB
Linear Fluorescent
Bath
One F17T8 lamp,
each 17w.



P7129-30EB
Linear Fluorescent
Bath
Two F17T8 lamps,
each 17w.



P7130-30EB
Linear Fluorescent
Bath
One F25T8 lamp,
each 25w max.



P7131-30EB
Linear Fluorescent
Bath
Two F25T8 lamps,
each 30w.



P7132-30EB
Linear Fluorescent
Bath
One F32T8 lamp,
each 32w.



P7133-30EB
Linear Fluorescent
Bath
Two F32T8 lamps,
each 32w.

LEVEL 1: SUBSTANTIALLY TRANSFORMED IN A FREE TRADE AGREEMENT COUNTRY



P7138-46EB
Arts and Crafts
One Quad 4-pin
Comp. Fl. lamp,
each 26w.



P7139-46EB
Arts and Crafts
Two F17T8 lamps,
each 26w.



P7140-46EB
Arts and Crafts
Two F25T8 lamps,
each 25w.



P7160-30EB
Linear Fluorescent
Bath
Two F17T8 lamps,
each 17w.



P7162-30EB
Linear Fluorescent
Bath
Two F32T8 lamps,
each 32w.



P7186-30EB
Modular Fluorescent
Two F32T8 lamps,
each 32w.



P7186-30ES
Modular Fluorescent
Two F34T12 lamps,
each 34w.



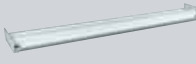
P7196-30EB
Modular Fluorescent
Four F32T8 lamps,
each 32w.



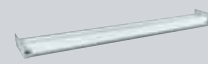
P7206-30EB
Modular Fluorescent
Four F32T8 lamps,
each 32w.



P7213-30EB
Modular Fluorescent
Two FB32T8 lamps,
each 32w.



P7214-30EB
Modular Fluorescent
Two F32T8 lamps,
each 32w.



P7215-30EB
Modular Fluorescent
Four F32T8 lamps,
each 32w.



P7216-30EB
Modular Fluorescent
Four F32T8 lamps,
each 32w.



P7262-30EB
Modular Fluorescent
Two FB32T8 lamps,
each 34w.



P7263-30EB
Modular Fluorescent
Two F32T8 lamps,
each 32w.



P7264-30EB
Modular Fluorescent
Four F32T8 lamps,
each 32w.



P7278-60EB
Modular Fluorescent
Four T-8 lamps,
each 17w.



P7279-60EB
Modular Fluorescent
Two T-8 lamps,
each 32w.



P7280-60EB
Modular Fluorescent
Four T-8 lamps,
each 32w.



P7285-60EB
Modular Fluorescent
Two T-8 lamps,
each 32w.



P7310-60STRWB
Round Clouds
Two Quad 4-pin
Comp. Fl. lamps,
each 13w.

LEVEL 1: SUBSTANTIALLY TRANSFORMED IN A FREE TRADE AGREEMENT COUNTRY



P7311-60STRWB
Round Clouds
Four Quad 4-pin
Comp. Fl. lamps,
each 13w.



P7336-35EB
Modular Fluorscent
Four F32T8 lamps,
each 34w.



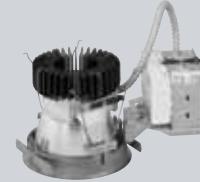
P7360-69EB
Ribbed Etched Glass
Two Twin 4-pin
Comp. Fl. lamps,
each 18w.



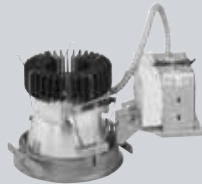
P745-IC
Recessed
One PAR 30 lamp,
each 75w max.



P7520-30
Hide-a-Lite I
One G-4 Bi-Pin lamp,
each 20w.



P8002-EB
LED Pro-optic



P8002-EBSD
LED Pro-optic



P8005-EB
LED Pro-optic



P8006-21A/30K
LED Pro-optic
One LED lamp, each
17.3w.



P8006-21A/35K
LED Pro-optic
One LED lamp, each
17.3w.



P8006-21A/40K
LED Pro-optic
One PCB lamp, each
16.3w.



P8006-22A/30K
LED Pro-optic
One LED lamp, each
17.3w.



P8006-22A/35K
LED Pro-optic
One LED lamp, each
18.5w.



P8006-22A/40K
LED Pro-optic
One PCB lamp, each
16.3w.



P8009-60
Shower Trim



P8010-60
Drop Opal Shower
Trim



P8011-60
Fresnel Trim



P8020-28
Albalite Glass Trim



P8021-21A/30K
LED Pro-optic
One LED lamp, each
17.3w.



P8021-21A/35K
LED Pro-optic
One LED lamp, each
18.5w.



P8021-21A/40K
LED Pro-optic
One LED lamp, each
18.5w.

LEVEL 1: SUBSTANTIALLY TRANSFORMED IN A FREE TRADE AGREEMENT COUNTRY



P8021-22A/30K
LED Pro-optic
One LED lamp, each
17.3w.



P8021-22A/35K
LED Pro-optic
One LED lamp, each
18.5w.



P8021-22A/40K
LED Pro-optic
One LED lamp, each
18.5w.



P8021-28/30K
LED Pro-optic
One LED lamp, each
17.3w.



P8021-28/35K
LED Pro-optic
One LED lamp, each
18.5w.



P8021-28/40K
LED Pro-optic
One LED lamp, each
18.5w.



P8022-30
LED Surface
Nine LED lamps,
each 1.2w.



P8022-30/35K
LED Surface
Nine LED lamps,
each 1.2w.



P8041-WL28
Open Shower Trim



P8053-31
Cone Trim



P8063-28
Step Baffle Trim



P8063-31
Step Baffle Trim



P8066-20
Step Baffle Trim



P8066-28
Step Baffle Trim



P8066-31
Step Baffle Trim



P8066-36
Step Baffle Trim



P8068-28
Cone Trim



P8071-20/35KSTR
LED Recessed
LED lamp, each
15w.



P8071-20STR
LED Recessed
LED lamp, each
15w.



P8071-28/35KSTR
LED Recessed
LED lamp, each
15w.



P8071-28STR
LED Recessed
LED lamp, each
15w.

LEVEL 1: SUBSTANTIALLY TRANSFORMED IN A FREE TRADE AGREEMENT COUNTRY



P8071-31/35K
LED Recessed
LED lamp, each
15w.



P8071-31STR
LED Recessed
LED lamp, each
15w.



P8071-36/35KSTR
LED Recessed
LED lamp, each
15w.



P8071-36STR
LED Recessed
LED lamp, each
15w.



P8072-28
Open Splay Trim



P8072WL-28
Open Shower Trim



P8073-28
Open Trim



P8073WL-28
Open Shower Trim



P8074-28
Open Trim



P8074WL-28
Open Shower Trim



P8075-28
Long Neck Baffle
Trim



P8075-31
Long Neck Baffle
Trim



P8080-20
LED Recessed
LED lamp, each
10w.



P8080-20/35K
LED Recessed
LED lamp, each
10w.



P8080-28
LED Recessed
LED lamp, each
10w.



P8080-28/35K
LED Recessed
LED lamp, each
10w.



P8080-31
LED Recessed
LED lamp, each
10w.



P8080-31/35K
LED Recessed
LED lamp, each
10w.



P8080-36
LED Recessed
LED lamp, each
10w.



P8080-36/35K
LED Recessed
LED lamp, each
10w.



P8082-28
Step Baffle Trim

LEVEL 1: SUBSTANTIALLY TRANSFORMED IN A FREE TRADE AGREEMENT COUNTRY



P8082-31
Step Baffle Trim



P8096-60
Drop Opal Shower
Trim



P8102-EB
LED Pro-optic



P8102-EBSD
LED Pro-optic



P8121-21A/30K
LED Pro-optic
One LED lamp, each
17.3w.



P8121-21A/35K
LED Pro-optic
One LED lamp, each
18.5w.



P8121-21A/40K
LED Pro-optic
One LED lamp, each
18.5w.



P8121-22A/30K
LED Pro-optic
One LED lamp, each
17.3w.



P8121-22A/35K
LED Pro-optic
One LED lamp, each
18.5w.



P8121-22A/40K
LED Pro-optic
One LED lamp, each
18.5w.



P8121-28/30K
LED Pro-optic
One LED lamp, each
17.3w.



P8121-28/35K
LED Pro-optic
One LED lamp, each
18.5w.



P8121-28/40K
LED Pro-optic
One LED lamp, each
18.5w.



P816-TG
Recessed



P8168-28
Open Trim



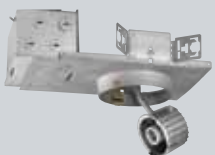
P8170-21A
Recessed Trim



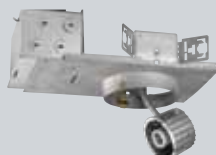
P8170-22A
Recessed Trim



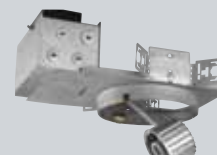
P818-TG
Recessed



P8200-EB
6" HID Pro-Optic
Housing
One ED17 or PAR30L
MH lamp, each
70w max.

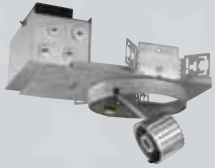


P8201-EB
6" HID Pro-Optic
Housing
One ED17 MH lamp,
each 100w max.



P8202-EB
8" HID Pro-Optic
Housing
One ED17 or PAR30L
MH lamp, each
70w max.

LEVEL 1: SUBSTANTIALLY TRANSFORMED IN A FREE TRADE AGREEMENT COUNTRY



P8203-EB
8" HID Pro-Optic
Housing
One ED17 MH lamp,
each 100w max.



P821-AT
Recessed Housing



P821-FB
Recessed Housing



P821-FBFC
Recessed Housing



P8213-EB
8" Pro-Optic
Fluorescent Housing
Two Quad 4-pin
Comp. Fl. lamps,
each 13w.



P8218-DVEB
8" Pro-Optic
Fluorescent Housing
Two Quad 4-pin
Comp. Fl. lamps,
each 18w.



P8226-DM
8" Pro-Optic
Fluorescent Housing
Two Quad 4-pin
Comp. Fl. lamps,
each 26w.



P8226-DVEB
8" Pro-Optic
Fluorescent Housing
Two Quad 4-pin
Comp. Fl. lamps,
each 26w.



P8232-EB
8" Pro-Optic
Fluorescent Housing
Two Triple Tube CFL
lamps, each 26w,
32w, or 42w.



P83-26ICAT
Recessed



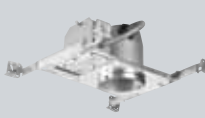
P83-26ICATDM
Recessed



P83-AT
Recessed



P83-ICAT
Recessed



P830-13ICAT
Recessed Housing
One Fluorescent
lamp, each 13w.



P830-18ICAT
Recessed Housing
One Fluorescent
lamp, each 18w.



P830-ATQL
Recessed



P830-TG
Recessed



P831-AT
Recessed



P831-FB
Recessed



P832-TG
Recessed



P8367WL-28
Open Shower Trim
One PAR 30 lamp,
each 50w.

LEVEL 1: SUBSTANTIALLY TRANSFORMED IN A FREE TRADE AGREEMENT COUNTRY



P8368-21A
Open Trim



P8368-28
Open Trim



P84-AT
Recessed



P85-AT
Recessed



P85-FB
Recessed



P85-TG
Recessed



P8511-01
Furring Channel



P86-TG
Recessed



P87-AT
Recessed



P87-ATQC
Recessed



P8771-30
Track Accessories



P88-ICAT
Recessed

LEVEL 2: SUBSTANTIALLY TRANSFORMED IN THE U.S.



P3213-30
Acrylic Globe
One Medium Base
lamp, each 60w
max.



P3346-30
White Glass
One Medium Base
lamp, each 60w
max.



P3348-30
White Glass
Two Medium Base
lamps, each 60w
max.



P3350-30
White Glass
Two Medium Base
lamps, each 75w
max.



P3405-10
Fitter
One Medium Base
lamp, each 60w
max.



P3405-30
Fitter
One Medium Base
lamp, each 60w
max.



P3406-30
Fitter
Two Medium Base
lamps, each 60w
max.



P3417-10
Fitter
Two Medium Base
lamps, each 60w
max.



P3417-30
Fitter
Two Medium Base
lamps, each 60w
max.



P3516-30
White Glass
One Medium Base
lamp, each 60w
max.



P3518-30
White Glass
Two Medium Base
lamps, each 60w
max.



P3520-30
White Glass
Two Medium Base
lamps, each 75w
max.



P5209-31
Pagoda
One Twin 2-pin
Comp. Fl. lamp, each
7w.



P5209-38
Pagoda
One Twin 2-pin
Comp. Fl. lamp, each
7w.



P5414-30
Mansard
One Medium Base
lamp, each 60w
max.



P5414-31
Mansard
One Medium Base
lamp, each 60w
max.



P5437-30
Non-Metallic
Incandescent
One Medium Base
lamp, each 60w
max.



P5437-31
Non-Metallic
Incandescent
One Medium Base
lamp, each 60w
max.



P5456-30
Non-Metallic
Incandescent
One Medium Base
lamp, each 100w
max.



P5456-31
Non-Metallic
Incandescent
One Medium Base
lamp, each 100w
max.



P5612-30
Polycarbonate
Outdoor
One Medium Base
lamp, each 60w
max.

LEVEL 2: SUBSTANTIALLY TRANSFORMED IN THE U.S.



P5612-31
Polycarbonate
Outdoor
One Medium Base
lamp, each 60w
max.



P5656-30
Non-Metallic
Incandescent
One Medium Base
lamp, each 100w
max.



P5656-31
Non-Metallic
Incandescent
One Medium Base
lamp, each 100w
max.



P5657-30
Non-Metallic
Incandescent
One Medium Base
lamp, each 100w
max.



P5657-31
Non-Metallic
Incandescent
One Medium Base
lamp, each 100w
max.



P5702-30
Polycarbonate
Outdoor
One Medium Base
lamp, each 75w
max.



P5703-30
Polycarbonate
Outdoor
One Medium Base
lamp, each 75w
max.



P5704-30
Polycarbonate
Outdoor
One Medium Base
lamp, each 60w
max.



P5705-30
Polycarbonate
Outdoor
One Medium Base
lamp, each 60w
max.



P5706-30
Polycarbonate
Outdoor
One Medium Base
lamp, each 60w
max.



P5737-30
Non-Metallic
Incandescent
One Medium Base
lamp, each 60w
max.



P5737-31
Non-Metallic
Incandescent
One Medium Base
lamp, each 60w
max.



P5738-30
Non-Metallic
Incandescent
One Medium Base
lamp, each 60w
max.



P5738-31
Non-Metallic
Incandescent
One Medium Base
lamp, each 60w
max.



P5748-30EB
Non-Metallic Energy
Star
One Quad 4-pin
Comp. Fl. lamp, each
18w.



P5748-31EB
Non-Metallic Energy
Star
One Quad 4-pin
Comp. Fl. lamp, each
18w.



P5813-30
Polycarbonate
Outdoor
One Medium Base
lamp, each 60w
max.



P5813-31
Polycarbonate
Outdoor
One Medium Base
lamp, each 60w
max.



P5814-30
Mansard
One Medium Base
lamp, each 60w
max.



P5814-31
Mansard
One Medium Base
lamp, each 60w
max.



P5815-30
Mansard
One Medium Base
lamp, each 60w
max.

LEVEL 2: SUBSTANTIALLY TRANSFORMED IN THE U.S.



P5815-31
Mansard
One Medium Base
lamp, each 60w
max.



P5816-30EB
Non-Metallic Energy
Star
One Triple tube or
spiral lamp, each
18w.



P5816-31EB
Non-Metallic Energy
Star
One Triple tube or
spiral lamp, each
18w.



P5817-30
Polycarbonate
Outdoor
One Medium Base
lamp, each 60w
max.



P5817-31
Polycarbonate
Outdoor
One Medium Base
lamp, each 60w
max.



P5818-30
Polycarbonate
Outdoor
One Medium Base
lamp, each 60w
max.



P5818-31
Polycarbonate
Outdoor
One Medium Base
lamp, each 60w
max.



P5843-30EB
Non-Metallic Energy
Star
One Quad 4-pin
Comp. Fl. lamp, each
18w.



P5843-31EB
Non-Metallic Energy
Star
One Quad 4-pin
Comp. Fl. lamp, each
18w.



P5844-30
Polycarbonate
Outdoor
One Medium Base
lamp, each 60w
max.



P5844-31
Polycarbonate
Outdoor
One Medium Base
lamp, each 60w
max.



P5881-30EB
Non-Metallic Energy
Star
One Quad 4-pin
Comp. Fl. lamp, each
18w.



P5881-31EB
Non-Metallic Energy
Star
One Quad 4-pin
Comp. Fl. lamp, each
18w.



P7003-09BP
Le Papier
ADA Wall Sconce



P7003-09GP
Le Papier
ADA Wall Sconce



P7003-09NP
Le Papier
ADA Wall Sconce



P7003-09RP
Le Papier
ADA Wall Sconce



P7003-09SP
Le Papier
ADA Wall Sconce



P7003-09WP
Le Papier
ADA Wall Sconce



P7003-20BP
Le Papier
ADA Wall Sconce



P7003-20GP
Le Papier
ADA Wall Sconce

LEVEL 2: SUBSTANTIALLY TRANSFORMED IN THE U.S.



P7003-20NP
Le Papier
ADA Wall Sconce



P7003-20RP
Le Papier
ADA Wall Sconce



P7003-20SP
Le Papier
ADA Wall Sconce



P7003-20WP
Le Papier
ADA Wall Sconce



P7118-30
Squares
Two Twin 2-pin
Comp. Fl. lamps,
each 13w.



P7182-30
Squares
Two Twin 2-pin
Comp. Fl. lamps,
each 7w.



P7337-30EB
Polycarbonate
Outdoor
Two Triple Tube CFL
lamps, each 13w.



P7338-30EB
Polycarbonate
Outdoor
Two Triple Tube CFL
lamps, each 13w.



P7339-30EB
Polycarbonate
Outdoor
Two Triple Tube CFL
lamps, each 13w.



P7340-30EB
Polycarbonate
Outdoor
One Triple tube
lamp, each 26w.



P7340-31EB
Polycarbonate
Outdoor
One Triple tube
lamp, each 26w.



P7344-30
Non-Metallic
Compact Fluorescent
One CFL lamp, each
13w.



P7344-31
Non-Metallic
Compact Fluorescent
One CFL lamp, each
13w.

LEVEL 3: OVER 50% US CONTENT



P6715-21
Multiplier Trim



P7273-30
Modular Fluorescent



P7273-35
Modular Fluorescent



P7274-30
Modular Fluorescent



P7274-35
Modular Fluorescent



P7275-30
Modular Fluorescent



P7275-35
Modular Fluorescent



P7276-30
Modular Fluorescent



P7276-35
Modular Fluorescent



P8001-21
Sloped Ceiling Trim



P8001-22
Sloped Ceiling Trim



P8014-28
Step Baffle Trim



P8014-31
Step Baffle Trim



P8015-21A
Open Trim



P8015-22A
Open Trim



P8016-68
Regressed Prismatic
Trim



P8017-28
Step Baffle Trim



P8017-31
Step Baffle Trim



P8018-21A
Open Trim



P8018-22A
Open Trim



P8019-68
Regressed Prismatic
Trim



P8019-83
Fresnel Trim



P8030-17A
LED Recessed



P8030-21A
LED Recessed



P8030-22A
LED Recessed



P8030-28
Open Trim



P8030-61
Open Trim



P8030-64
Open Trim



P8030-67
Open Trim



P8031-28
Step Baffle Trim



P8031-31
Step Baffle Trim



P8032-21
Wall Washer Trim



P8034-83
Fresnel Trim



P8035-68
Regressed Prismatic
Trim



P8041-14
Open Trim



P8066-09
Step Baffle Trim



P8066-14
Step Baffle Trim



P8072-10
Open Splay Trim



P8113-21A
Wall Washer Trim



P8113-22A
Wall Washer Trim



P8114-28
Step Baffle Trim



P8114-31
Step Baffle Trim

LEVEL 3: OVER 50% US CONTENT



P8115-21A
Open Trim



P8115-22A
Open Trim



P8116-68
Regressed Prismatic
Trim



P8116-83
Fresnel Trim



P8117-28
Step Baffle Trim



P8117-31
Step Baffle Trim



P8118-21A
Open Trim



P8118-22A
Open Trim



P8119-68
Regressed Prismatic
Trim



P8119-83
Fresnel Trim



P8130-21A
Recessed Trim



P8130-22A
Recessed Trim



P8132-21
Wall Washer Trim



P8135-68
Regressed Prismatic
Trim



P8172-09
Deep Cone Trim



P8172-21A
Deep Cone Trim



P8172-22A
Deep Cone Trim



P8562-31
Landscape Accessory



P8628-31
Landscape Accessory
10 guage, 300ft.



P8635-31
Landscape Accessory
12 guage, 100ft.



P8699-31
Landscape Accessory
12 guage, 200ft.

LEVEL 3: OVER 50% US CONTENT



PA001-31
Towne Series
One Metal Halide
ED-17 med. base
lamp, each 100w
max.



PP004-31
Decorative Poles



PP005-31
Decorative Poles



PP4207-20
Roadway Pole



PSL001-20
Contoured Roadway
One Metal Halide
lamp, each 175w
max.



PSL002-20
Contoured Roadway
One Metal Halide
lamp, each 250w
max.



PSL003-20
Rectangular
Roadway
One Metal Halide
lamp, each 250w
max.



Progress Lighting, Inc.

701 Millennium Blvd.
Greenville, SC 29607
www.progresslighting.com

6/11

