

Meter Mounting Equipment

PA-DE-S.NJ-W.VA Area

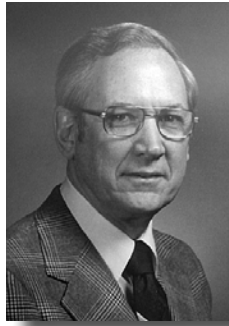


 **MILBANK[®]**





Charles A. Milbank
1879-1966



Bill Martin
1916-1998



Robert F. Waldrop
1922-2002



Robert F. Waldrop, II
Chairman



Katrina Waldrop Henke
Vice Chairman

Milbank—Quality Metering Products for 80 Years

Milbank Manufacturing Company was established in 1927 by Charles A. Milbank. Originally, the company manufactured high voltage switches; however, by 1941 Milbank devoted itself primarily to the manufacture of sheet metal enclosures and related equipment for the electrical generation and distribution industry. Today we are an industry leader in the manufacture of electrical meter sockets. Through a national network of manufacturer's representatives we provide wholesale electrical distributors with quality electrical products for the utility, contractor, industrial and OEM markets.

As the meter standards have changed, Milbank has been successful in adapting its product line to these changes. Our full scale engineering department designs products to meet customer specifications and satisfy all utility requirements. Milbank's employee base of over 1,000 workers, along with our five manufacturing facilities com-

prising almost 550,000 square feet give us the flexibility to schedule, produce, and ship orders quickly. Currently, Milbank manufactures over 10,000 different catalog items, and this list continues to grow. Our unique product offering includes: Residential & Commercial Meter Sockets; Residential & Commercial Meter Pedestals; RV/MH Power Outlets, Service Pedestals, and Transformers; Commercial & Industrial Electrical Enclosures; Circuit Breakers; Disconnects & Safety Switches; Safety Sockets; Utility & Residential Secondary Pedestals; Hubs, and related accessories. If you don't find a unit in this catalog to service your needs, send us your specifications and we will be happy to work with you.

Our success has come from a loyal customer base that can rely on us to build quality products at a fair price in a timely manner. Our willingness and ability to design and produce new products to meet our customer demands is

an important factor to remain competitive in today's electrical market.

Milbank has been serving the electric utility & wholesale distribution industries for 80 years with innovative, quality engineered products. So remember us for all of your meter mounting and related requirements, and we will be happy to serve you as we have in the past—with dependable service and quality products!

We take great pride in being one of the few family-owned businesses left in our industry. We are a third generation run business and truly believe that...

**FAMILY MAKES A
DIFFERENCE!**



Catalog Number Logic

CATALOG NUMBER LOGIC

U = UL Listed
S = Non-UL Listed
UAP = UL / Alum / Painted

TG = Triplex Ground
QG = Quadplex Ground

KK = Horn By-Pass Provision

Specific Utility Designation

Milbank Drawing Number

Barrel Lock

U7040-RL-TG-KK-5T9-BL-AUT

HUB OPENINGS / CLOSING PLATES

O	Plain Top	WL	1"	For -RL Opening
RL	Small Hub Opening	YL	1½"	For -RL Opening
R	Large Hub Opening	ZL	1½"	For -RL Opening
XL	Small Closing Plate	DL	2"	For -RL Opening
X	Large Closing Plate	EL	2½"	For -RL Opening
RXL	Large Hub Opening adapted to small Closing Plate.	F	3"	For -R Opening
		G	3½"	For -R Opening
RRL	Large Hub Opening adapted to small Hub Opening	H	4"	For -R Opening

Fifth Terminal Designation

- 5T6 installed at 6:00
- 5T9 installed at 9:00

Barrel Lock / Guard Provision

U2448-X-QG-5T9-K3-BLG-ARE

Milbank Drawing Number

TG = Triplex Ground
QG = Quadplex Ground

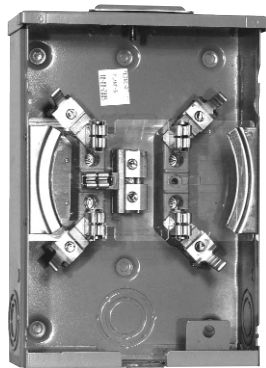
Specific Utility Designation

Lugs [1Ø or 3Ø – 350 or 600 kcmil]

- Single [K1, K3, K5, K7]
- Twin [K2, K4, K6, K8]



U7021-RL-TG-KK-DLC



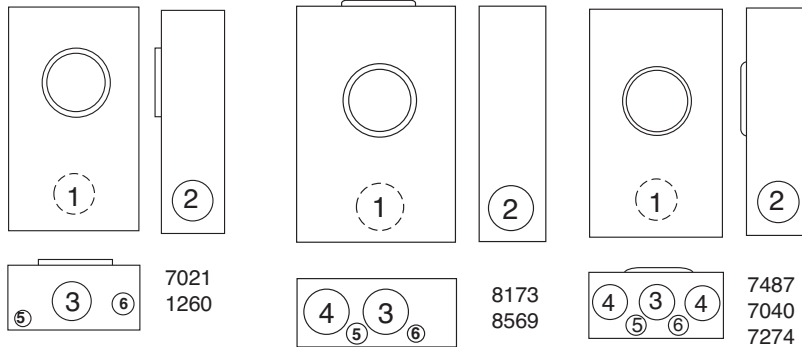
U8569-XL-KK-BLG



U7487-RL-TG-KK



U7040-XL-TG-KK



125 & 200 AMP-SINGLE POSITION-4 & 5 TERMINAL-RINGLESS-1Ø3W

UTIL. APRVL	NO. OF TERMS	AMP	SERVICE	CATALOG NUMBER	HUB	CONNECTORS CU/AL	BY-PASS	DIMENSIONS			CONCENTRIC K.O.'S					
								D"	W"	H"	1	2	3	4	5	6
ALLEG-DUQ	4	125	OH/UG	U7274-YL-KK	1 1/4"	#6 - 2/0	HORN	3 5/16	8	11 1/2	1 1/2	1 1/2	2	1 1/4	-	1/4
ALLEG	4	125	OH/UG	U7487-RL-TG-KK	H.O.	#6 - 2/0	HORN	3 5/16	8	11 1/2	1 1/2	1 1/2	2	1 1/4	-	1/4
ALLEG-GPU-PPL	4	125	OH/UG	U7487-RL-TG-KK-BLG*	H.O.	#6 - 2/0	HORN	3 5/16	8	11 1/2	1 1/2	1 1/2	2	1 1/4	-	1/4
ALLEG	4	125	OH/UG	U7487-YL-TG-KK-BLG*	1 1/4"	#6 - 2/0	HORN	3 5/16	8	11 1/2	1 1/2	1 1/2	2	1 1/4	-	1/4
ALLEG-PECO	4	125	OH/UG	U7487-RL-KK-BL**	H.O.	#6 - 2/0	HORN	3 5/16	8	11 1/2	1 1/2	1 1/2	2	1 1/4	-	1/4
PSEG	5	125	OH/UG	U8569-YL-KK-BLG*Ⓛ	1 1/4"	#6 - 2/0	HORN	3 5/16	8	11 1/2	1 1/2	1 1/2	1 1/2	1 1/2	-	1/4
PSEG	5	200	OH/UG	U8173-XL-KK-BLG*Ⓛ	C.P.	#6-350 kcmil	HORN	4 1/8	11	15 1/2	2 1/2	2 1/2	2 1/2	2 1/2	1/4, 1/2	1/4
ALLEG-PECO	4	200	OH	U7021-RL-KK-BL**	H.O.	#6-350 kcmil	HORN	4 1/8	8	15 1/2	2 1/2	2 1/2	2 1/2	-	1/4	1/4, 1/2
DUQ	4	200	OH	U7021-RL-KK-DLC	H.O.	#6-350 kcmil	HORN	4 1/8	8	15 1/2	2 1/2	2 1/2	2 1/2	-	1/4	1/4, 1/2
ALLEG-GPU-PPL	4	200	OH	U7021-RL-TG-KK-BLG*	H.O.	#6-350 kcmil	HORN	4 1/8	8	15 1/2	2 1/2	2 1/2	2 1/2	-	1/4	1/4, 1/2
ALLEG	4	200	OH/UG	U7040-XL-TG-KK	C.P.	#6-350 kcmil	HORN	4 1/8	11	15 1/2	2 1/2	2 1/2	2 1/2	2 1/2	1/4, 1/2	1/4
CON	4	200	OH	U7040-RL-KK-DPL	H.O.	#6-350 kcmil	HORN	4 1/8	11	15 1/2	2 1/2	2 1/2	2 1/2	2 1/2	1/4, 1/2	1/4
PSEG	5	200	OH	U1260-RL-TG-KK-BLG*	H.O.	#6-350 kcmil	HORN	4 1/8	8	15 1/2	2 1/2	2 1/2	2 1/2	-	1/4	1/4, 1/2

FIFTH TERMINAL: For field mounted fifth terminal: Order catalog number **K5T** to fit into square opening at the 9 o'clock position of the *new style block* (#6-350 kcmil.) Order catalog number **5T8K2** to fit into round opening at the 9 o'clock position of the *old style block* (#6-2/0 kcmil.)

HUBS: For proper hub selection see the hub suffix chart on the accessory page.

CONNECTORS: Extruded aluminum connectors are tin plated.

BYPASS: Units provided with horn type bypass (suffix **-KK**).

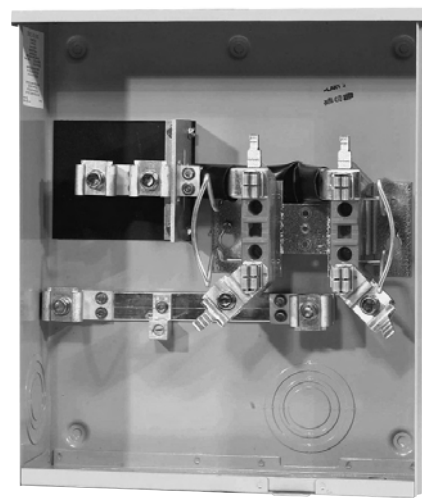
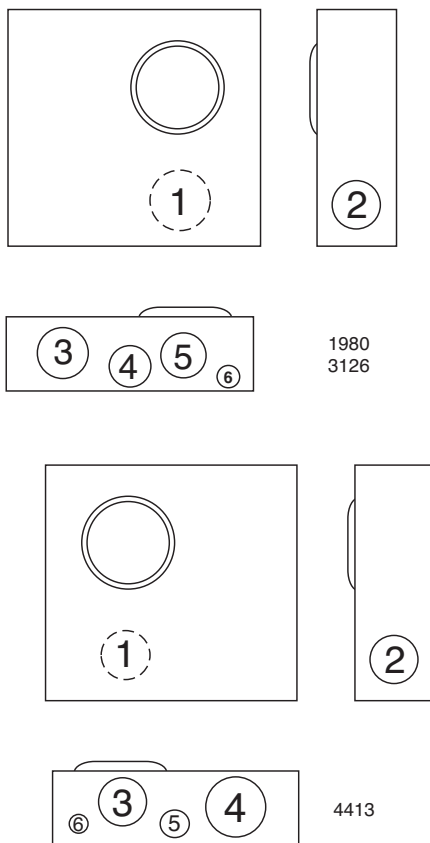
* Barrel lock with guard provision (suffix **-BLG**).

** Barrel lock (suffix **-BL**).

Ⓛ Lexan® safety shield provided.

Utility requirements for this equipment may vary. Always consult the serving utility for their requirements before ordering or installing equipment in this catalog.





U1980-O-KK-DPL

200 AMP-SINGLE POSITION-4 TERMINAL-SIDE WIREWAY-RINGLESS-1Ø3W

UTIL. APRVL	AMP	SERVICE	CATALOG NUMBER	HUB	CONNECTORS CU/AL	BY- PASS	DIMENSIONS			CONCENTRIC K.O.'S					
							D"	W"	H"	1	2	3	4	5	6
ALLEG- PECO	200	UG	U1980-O-KK-BL**	BLANK	#6-350 kcmil	HORN	4 ¹ / ₂	13	15 ¹ / ₄	2 ¹ / ₂	2 ¹ / ₂	3	1 ¹ / ₂	2 ¹ / ₂	1 ¹ / ₄ , 1 ¹ / ₂
CON	200	UG	U1980-O-KK-DPL	BLANK	#6-350 kcmil	HORN	4 ¹ / ₂	13	15 ¹ / ₄	2 ¹ / ₂	2 ¹ / ₂	3	1 ¹ / ₂	2 ¹ / ₂	1 ¹ / ₄ , 1 ¹ / ₂
ALLEG- GPU-PPL	200	UG	U3126-O-KK-BLG*	BLANK	#6-350 kcmil	HORN	4 ¹ / ₂	13	15 ¹ / ₄	2 ¹ / ₂	2 ¹ / ₂	3	1 ¹ / ₂	3	1 ¹ / ₄ , 1 ¹ / ₂
DUQ	200	UG	U3126-O-KK-DLC	BLANK	#6-350 kcmil	HORN	4 ¹ / ₂	13	15 ¹ / ₄	2 ¹ / ₂	2 ¹ / ₂	3	1 ¹ / ₂	3	1 ¹ / ₄ , 1 ¹ / ₂
ALLEG- GPU-PPL	200	UG	U4413-O-KK-BLG*	BLANK	#6-350 kcmil	HORN	4 ¹ / ₂	13	15 ¹ / ₄	2 ¹ / ₂	2 ¹ / ₂	2 ¹ / ₂	3	1 ¹ / ₂	1 ¹ / ₄ , 1 ¹ / ₂

FIFTH TERMINAL: For field mounted fifth terminal: Order catalog number **K5T** to fit into square opening at the 9 o'clock position.

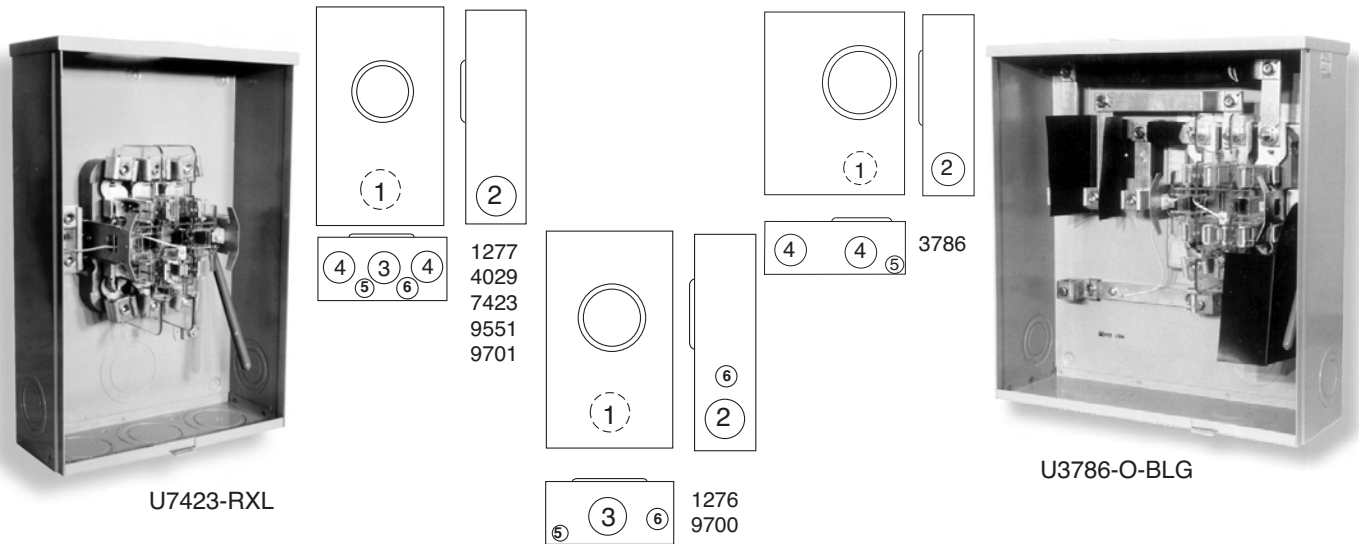
CONNECTORS: Extruded aluminum connectors are tin plated.

BYPASS: Units provided with horn type bypass (suffix **-KK**).

* Barrel lock with guard provision (suffix **-BLG**).

** Barrel lock (suffix **-BL**).

Utility requirements for this equipment may vary. Always consult the serving utility for their requirements before ordering or installing equipment in this catalog.


125 AMP-7 TERMINAL-LEVER BYPASS-MEDIUM DUTY-RINGLESS-3Ø4W

UTIL. APRVL	AMP	SERVICE	CATALOG NUMBER	HUB	CONNECTORS CU/AL	BY-PASS	DIMENSIONS			CONCENTRIC K.O.'S					
							D"	W"	H"	1	2	3	4	5	6
PSEG	125	OH	U1276-RL-BLG*	H.O.	#6-2/0	LEVER	4 ⁷ / ₈	10	18 ¹ / ₂	2	2	2	—	1/4, 1/2	3/4
PSEG	125	OH/UG	U1277-RXL-BLG*	C.P.	#6-2/0	LEVER	4 ⁷ / ₈	13	19	3	2 ¹ / ₂	3	3	1/4	1/4, 1/2

BYPASS: Lever operates sliding bypass only.

200 AMP-7 TERMINAL-LEVER BYPASS-MEDIUM DUTY-RINGLESS-3Ø4W

UTIL. APRVL	SW	AMP	SERVICE	CATALOG NUMBER	HUB	CONNECTORS		BY-PASS	DIMENSIONS			CONCENTRIC K.O.'S					
						LINE	LOAD		D"	W"	H"	1	2	3	4	5	6
GPU-PPL	Y	200	UG	U3786-O-BLG*	BLANK	#6-350 kcmil	#6-350 kcmil	LEVER	6	18	19 ¹ / ₄	3	2 ¹ / ₂	—	4	1/4, 1/2	—
PECO	N	200	OH/UG	U7423-RXL	C.P.	#6-350 kcmil	#6-350 kcmil	LEVER	4 ⁷ / ₈	13	19	3	2 ¹ / ₂	3	3	1/4	1/4, 1/2
CON	N	200	OH/UG	U4029-X-DPL	C.P.	#6-350 kcmil	#6-350 kcmil	LEVER	4 ⁷ / ₈	13	19	3	2 ¹ / ₂	3	3	1/4	1/4, 1/2
PSEG	N	200	OH/UG	U1279-X-BLG*	C.P.	#6-350 kcmil	#6-350 kcmil	LEVER	4 ⁷ / ₈	13	19	3	2 ¹ / ₂	3	3	1/4	1/4, 1/2

HUBS: For proper hub selection see the hub suffix chart on the accessory page.

BYPASS: Lever operates sliding bypass only.

200 AMP-5 & 7 TERMINAL-LEVER BYPASS-HEAVY DUTY-RINGLESS-3Ø4W

UTIL. APRVL	NO. OF TERMS	AMP	SVC.	CATALOG NUMBER	HUB	CONNECTORS CU/AL	BY-PASS	DIMENSIONS			CONCENTRIC K.O.'S					
								D"	W"	H"	1	2	3	4	5	6
CON	5	200	OH/UG	U9551-X-DPL	C.P.	#6-350 kcmil	LEVER	4 ⁷ / ₈	13	19	3	2 ¹ / ₂	3	3	1/4	1/4, 1/2
ALG-GPU-PPL-PSEG	7	200	OH	U9700-RRL-BLG*	H.O.	#6-350 kcmil	LEVER	4 ⁷ / ₈	10	18 ¹ / ₂	3	2 ¹ / ₂	3	—	1/4, 1/2	3/4
ALLEG	7	200	OH/UG	U9701-RRL	H.O.	#6-350 kcmil	LEVER	4 ⁷ / ₈	13	19	3	2 ¹ / ₂	3	3	1/4	1/4, 1/2
ALLEG-GPU-PPL	7	200	OH/UG	U9701-RRL-BLG*	H.O.	#6-350 kcmil	LEVER	4 ⁷ / ₈	13	19	3	2 ¹ / ₂	3	3	1/4	1/4, 1/2

HUBS: For proper hub selection see the hub suffix chart on the accessory page.

BYPASS: Lever supplies clamping action and operates bypass device.

CONNECTORS: The **U9551**, **U9700** & **U9701** are supplied with internal hex nuts.

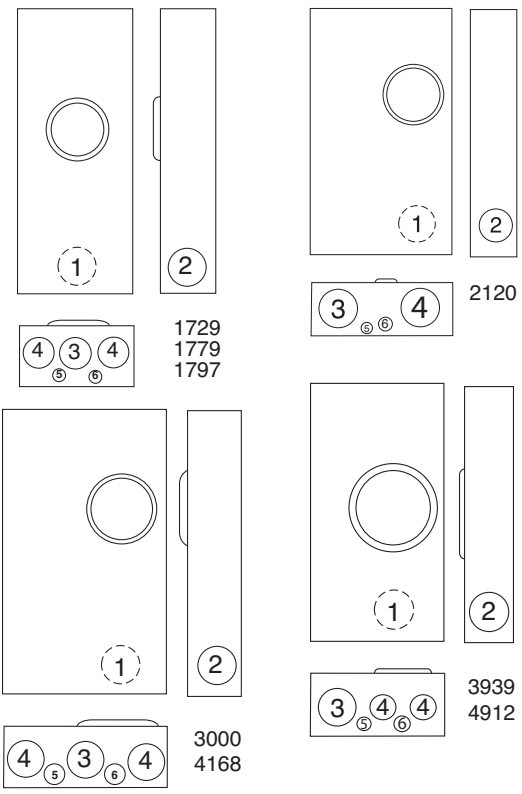
* Barrel lock with guard provision (suffix **-BLG**).

Utility requirements for this equipment may vary. Always consult the serving utility for their requirements before ordering or installing equipment in this catalog.

320 AMP-4 & 7 TERMINAL-LEVER BYPASS-HEAVY DUTY-RINGLESS



U1779-R-K3-BLG
(not shown with -BLG or K3 Connectors)



U1797-O-K3L-K2L



U2120-X

320 AMP-SINGLE POSITION-4 & 7 TERMINAL LEVER BYPASS-HEAVY DUTY-SIDE WIREWAY-RINGLESS-1Ø3W & 3Ø4W

UTIL. APRVL	TERM.	SERVICE	CATALOG NUMBER	HUB	CONNECTORS		BY-PASS	DIMENSIONS			CONCENTRIC K.O.'S					
					LINE	LOAD		D"	W"	H"	1	2	3	4	5	6
ALLEG-PPL	4	UG	U3939-X	C.P.	3/8"-16 stud	3/8"-16 stud	LEVER	5 3/4	16	30	3 1/2	3 1/2	4	3 1/2	1/2	-
GPU	4	UG	U4912-X-K3-BLG*	C.P.	#4-600 kcmil	3/8"-16 stud	LEVER	5 3/4	16	30	3 1/2	3 1/2	4	3 1/2	1/4	1/2 3/4, 1
ALLEG	4	UG	U1797-O-K3L-K2L	BLANK	#4-600 kcmil (2) 1/0-250	twin #6-350 kcmil	LEVER	4 7/8	15	30	3	3	3	3	1/4	1/4 1/2
PECO	4	UG	U3000-O-2/K3L-BL**	BLANK	#4-600 kcmil or (2) 1/0-250 kcmil		LEVER	4 7/8	15	30	3	3	3	3	1/4	1/4 1/2
ALLEG	7	UG	U2120-O	BLANK	3/8"-16 stud	3/8"-16 stud	LEVER	6 1/2	17 3/4	31 3/4	4	3	4	4	1/4	1/2 3/4, 1
ALLEG-GPU-PPL	7	OH/UG	U4168-X-K7-BLG*	C.P.	#4-600 kcmil (2) 1/0-250	3/8"-16 stud	LEVER	5 3/4	16	30	3 1/2	3 1/2	4	3 1/2	3 1/2	1/2

320 AMP-SINGLE POSITION-4 TERMINAL-LEVER BYPASS-HEAVY DUTY-RINGLESS-1Ø3W

UTIL. APRVL	TERM.	SERVICE	CATALOG NUMBER	HUB	CONNECTORS		BY-PASS	DIMENSIONS			CONCENTRIC K.O.'S					
					LINE	LINE		D"	W"	H"	1	2	3	4	5	6
GPU	4	OH	U1779-R-K3-BLG*	H.O.	#4-600 kcmil (2) 1/0-250	3/8"-16 stud	LEVER	4 7/8	13	38 3/4	3	2 1/2	3	3	1/4	1/4 1/2
CON	4	UG	U1729-X-DPL	C.P.	3/8"-16 stud	3/8"-16 stud	LEVER	4 7/8	13	29 3/4	3	2 1/2	3	3	1/4	1/4 1/2

FIFTH TERMINAL: For field mounted fifth terminal order **K3865** for **U1729 & U3000**, **K3866** for **U1779**.

HUBS: For proper hub selection see the hub suffix chart on the accessory page.

CONNECTORS: Extruded aluminum connectors are tin plated. For single lug connector kit order as extra: **K1539** (350 kcmil) or **K1540** (600 kcmil). For twin lug connectors: **K1350** (350 kcmil). Order two kits to cover both line and load on sockets not supplied with line connectors.

LEVER BYPASS: Lever bypass supplies clamping action on the meter spades and also operates the bypass device.

* Barrel lock with guard provision (suffix **-BLG**).

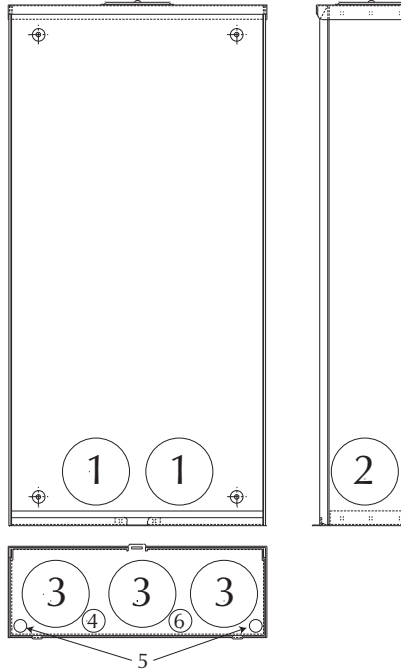
** Barrel lock (suffix **-BL**).

Utility requirements for this equipment may vary. Always consult the serving utility for their requirements before ordering or installing equipment in this catalog.





U4664-X-8522-DPL



U4667-X-8043-DPL

480 AMP -4 & 7 TERMINAL-RINGLESS-OVERHEAD/UNDERGROUND

UTIL. APRVL	PHASE	AMP	SERV.	CATALOG NUMBER	HUB	CONNECTOR CU/AL		DIMENSIONS			CONCENTRIC K.O.'S					
						LINE	LOAD	D"	W"	H"	1	2	3	4	5	6
CON	1Ø3W	480	OH/UG	U4664-X-8522-DPL	(1) Large C.P. (-X)	1/2"-20 stud	1/2"-20 stud	6	17 ³ / ₄	36	4	4	4	1/2, 3/4	1/4	1/2, 3/4
CON	3Ø4W	480	OH/UG	U4667-X-8043-DPL	(1) Large C.P. (-X)	1/2"-20 stud	1/2"-20 stud	6	20 ¹ / ₄	34	4	4	4	1/2, 3/4	1/4	-

HUBS: For proper hub selection see hub suffix chart in the accessory section of this catalog.

APPLICATION: For use with self-contained Type MS-K watt-hour meters.

CAPACITY: 480 amperes continuous / 600 amp max.

TERMINALS: 1/2"-20 steel studs with nuts and captive Belleville washers to accommodate various bolt-on type lugs for conductors from #6 to 800 kcmil. All units come with ground lugs factory installed.

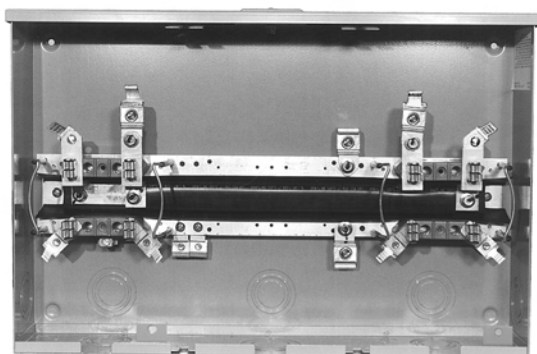
ENCLOSURE: Constructed of 14 gauge galvanized steel suitable for indoor or outdoor installations. Ringless cover.

METER MOUNTING: Two position stud type. One set of studs provides out-of-service storage. The in-service studs are positioned so the meter cannot be installed upside-down. Use 1/2" insulated wrench. Full travel meter opening slide plate eliminates the need for repositioning the slide plate for the "IN" or "OUT OF SERVICE" position.

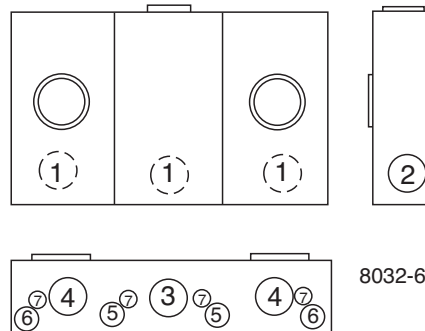
BLOCKS: Glass fiber reinforced polyester plastic. High arc withstand strength and track resistant. Provisions for lightning arresters.

CONNECTORS: Phase and neutral connectors not included. See accessory pages for connectors.

Utility requirements for this equipment may vary. Always consult the serving utility for their requirements before ordering or installing equipment in this catalog.



U8032-XL-KK-BLG



8032-6

100 AMP/ POSITION-4 TERMINAL-CENTER WIREWAY-RINGLESS-OH/UG-1Ø3W

UTIL. APRVL	AMPS	NO. OF POS.	CATALOG NUMBER	HUB	CONNECTOR CU/AL		BY-PASS	DIMENSIONS			CONCENTRIC K.O.'S						
					LINE	LOAD		D"	W"	H"	1	2	3	4	5	6	7
ALLEG-GPU	100	2	U8032-XL-KK-BLG*	C.P.	#6-350 kcmil	#6-2/0	HORN	4 1/2	24 1/2	16	2	2	3	2	1/2	1/4, 1/2	5/16
ALLEG-PECO	100	2	U8032-XL-KK-BL**	C.P.	#6-350 kcmil	#6-2/0	HORN	4 1/2	24 1/2	16	2	2	2 1/2	2	1/2	1/4, 1/2	5/16
ALLEG-GPU	100	3	U8033-XL-KK-BLG*	C.P.	#6-350 kcmil	#6-2/0	HORN	4 1/2	32 1/16	16	2	2	3	2	1/2	1/4, 1/2	5/16
ALLEG-PECO	100	3	U8033-XL-KK-BL**	C.P.	#6-350 kcmil	#6-2/0	HORN	4 1/2	32 1/16	16	2	2	2 1/2	2	1/2	1/4, 1/2	5/16
ALLEG-GPU	100	4	U8034-XL-KK-BLG*	C.P.	#6-350 kcmil	#6-2/0	HORN	4 1/2	40 7/8	16	2	2	3	2	1/2	1/4, 1/2	5/16
ALLEG-PECO	100	4	U8034-XL-KK-BL**	C.P.	#6-350 kcmil	#6-2/0	HORN	4 1/2	40 7/8	16	2	2	2 1/2	2	1/2	1/4, 1/2	5/16
ALLEG-GPU	100	5	U8035-XL-KK-BLG*	C.P.	#6-350 kcmil	#6-2/0	HORN	4 1/2	49 1/16	16	2	2	3	2	1/2	1/4, 1/2	5/16
ALLEG-PECO	100	5	U8035-XL-KK-BL**	C.P.	#6-350 kcmil	#6-2/0	HORN	4 1/2	49 1/16	16	2	2	2 1/2	2	1/2	1/4, 1/2	5/16
ALLEG-GPU	100	6	U8036-XL-KK-BLG*	C.P.	#6-350 kcmil	#6-2/0	HORN	4 1/2	57 1/4	16	2	2	3	2	1/2	1/4, 1/2	5/16
ALLEG-PECO	100	6	U8036-XL-KK-BL**	C.P.	#6-350 kcmil	#6-2/0	HORN	4 1/2	57 1/4	16	2	2	2 1/2	2	1/2	1/4, 1/2	5/16

HUB: For proper hub selection refer to the hub suffix chart on the accessory page.

FIFTH TERMINAL: For field mounted fifth terminal, order catalog number **5T8K2** for each meter position, six o'clock position only.

CONNECTORS: Extruded aluminum connectors are tin plated.

BUSSING: Bussing is 5/16" x 1" aluminum.

BYPASS: Units provided with horn type bypass (suffix **-KK**).

* Barrel lock with guard provision (suffix **-BLG**).

** Barrel lock (suffix **-BL**).

150 AMP / POSITION-4 TERMINAL-CENTER WIREWAY-RINGLESS-OH/UG-1Ø3W

UTIL. APRVL	AMPS	NO. OF POS.	CATALOG NUMBER	HUB	CONNECTOR CU/AL		BY-PASS	DIMENSIONS			CONCENTRIC K.O.'S						
					LINE	LOAD		D"	W"	H"	1	2	3	4	5	6	7
DUQ	150	2	U9312-XL-KK-DLC	C.P.	#6-350 kcmil	#6-350 kcmil	HORN	4 1/2	24 1/2	16	2	2	2 1/2	2	1/2	1/4, 1/2	5/16
DUQ	150	3	U9313-XL-KK-DLC	C.P.	#6-350 kcmil	#6-350 kcmil	HORN	4 1/2	32 1/16	16	2	2	2 1/2	2	1/2	1/4, 1/2	5/16
DUQ	150	4	U9314-XL-KK-DLC	C.P.	#6-350 kcmil	#6-350 kcmil	HORN	4 1/2	40 7/8	16	2	2	2 1/2	2	1/2	1/4, 1/2	5/16

HUB: For proper hub selection refer to the hub suffix chart on the accessory page.

FIFTH TERMINAL: For field mounted fifth terminal, order catalog number **K5T** in 6 o'clock position only for each position.

CONNECTORS: Extruded aluminum connectors are tin plated.

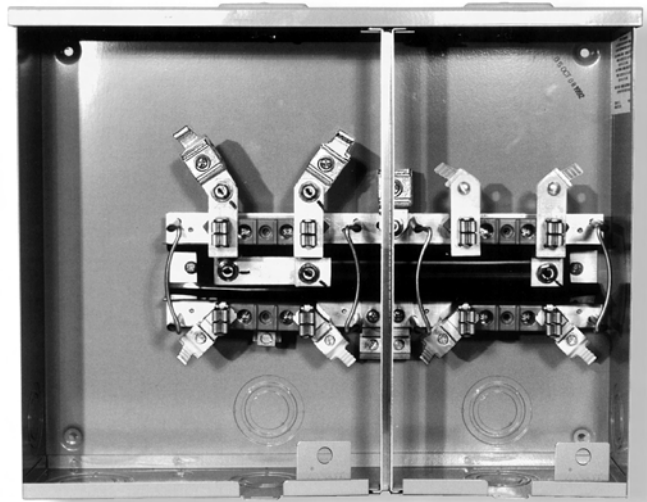
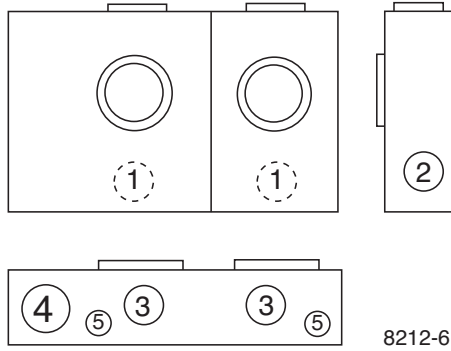
BYPASS: Units provided with horn type bypass (suffix **-KK**).

BUSSING: Bussing is 5/16" x 1" aluminum.

Utility requirements for this equipment may vary. Always consult the serving utility for their requirements before ordering or installing equipment in this catalog.



100 AMP/ POSITION-4 TERMINAL-CENTER WIREWAY-HORIZONTAL GANGS-RINGLESS-300 VAC



U8212-XL-KK-BLG

100 AMP / POSITION- 4 TERMINAL-END WIREWAY-RINGLESS-OH/UG-1Ø3W

UTIL. APRVL	AMPS	NO. OF POS.	CATALOG NUMBER	HUB	CONNECTOR CU/AL		BY-PASS	DIMENSIONS			CONCENTRIC K.O.'S				
					LINE	LOAD		D"	W"	H"	1	2	3	4	5
ALLEG-GPU-PPL	100	2	U8212-XL-KK-BLG*	C.P.	#6-350 kcmil	#6-2/0	HORN	4 1/2	20 5/16	16	2	2	2	3	1/4, 1/2
ALLEG-GPU-PPL	100	3	U8213-XL-KK-BLG*	C.P.	#6-350 kcmil	#6-2/0	HORN	4 1/2	28 1/2	16	2	2	2	3	1/4, 1/2
ALLEG-GPU-PPL	100	4	U8214-XL-KK-BLG*	C.P.	#6-350 kcmil	#6-2/0	HORN	4 1/2	40 11/16	16	2	2	2	3	1/4, 1/2
ALLEG-GPU	100	5	U8215-XL-KK-BLG*	C.P.	#6-350 kcmil	#6-2/0	HORN	4 1/2	48 7/8	16	2	2	2	3	1/4, 1/2
ALLEG-GPU	100	6	U8216-XL-KK-BLG*	C.P.	#6-350 kcmil	#6-2/0	HORN	4 1/2	57 1/16	16	2	2	2	3	1/4, 1/2

HUB: For proper hub selection refer to the hub suffix chart on the accessory page. Hub opening is supplied at each end. Extra openings in top are closed with a closing plate as standard.

FIFTH TERMINAL: For field mounted fifth terminal in six o'clock position, order catalog number **5T8K2** for each meter position. For field mounted fifth terminal in nine o'clock position, order catalog number **K9959** for each meter position.

CONNECTORS: Extruded aluminum connectors are tin plated.

BYPASS: Units provided with horn type bypass (suffix **-KK**).

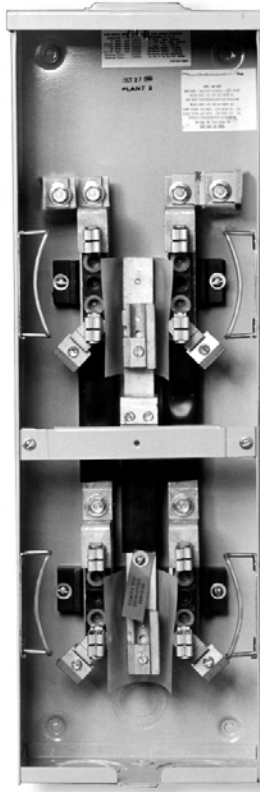
* Barrel lock with guard provision (suffix **-BLG**).

BUSSING: Bussing is 5/16" x 1" aluminum.

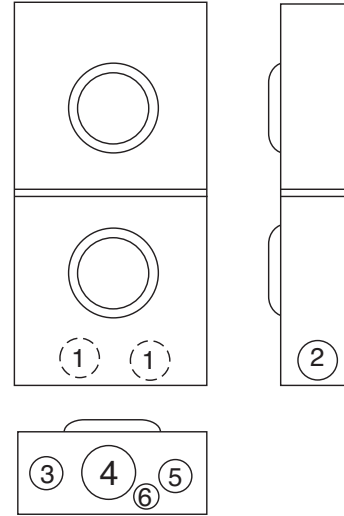
All units in PPL Utility area are approved for overhead service only.

Utility requirements for this equipment may vary. Always consult the serving utility for their requirements before ordering or installing equipment in this catalog.





U2692-XL-KK-BL



100 AMP / POSITION-4 TERMINAL-RINGLESS

UTIL. APRVL	NO. OF POS	SERVICE	CATALOG NUMBER	HUB	CONNECTORS CU/AL		BY-PASS	DIMENSIONS			CONCENTRIC K.O.'S					
					LINE	LOAD		D"	W"	H"	1	2	3	4	5	6
ALLEG-PECO	2	OH/UG	U2692-XL-KK-BL*	C.P.	#2-350 kcmil	#6-2/0	NONE	4 ¹ / ₈	8	25 ¹ / ₄	1 ¹ / ₂	1 ¹ / ₂	1 ¹ / ₄	2 ¹ / ₂	1 ¹ / ₄	1 ¹ / ₄
ALLEG-PECO	3	OH/UG	U2693-XL-KK-BL*	C.P.	#2-350 kcmil	#6-2/0	NONE	4 ¹ / ₈	8	35 ³ / ₄	1 ¹ / ₂	1 ¹ / ₂	1 ¹ / ₄	2 ¹ / ₂	1 ¹ / ₄	1 ¹ / ₄

HUBS: For proper hub selection see the hub suffix chart on the accessory page.

FIFTH TERMINAL: For a field mounted fifth terminal, order catalog number **5T8K2** in 9 o'clock position only.

CONNECTORS: Extruded aluminum connectors are tin plated.

BYPASS: Units provided with horn type bypass (suffix **-KK**).

* Barrel lock (suffix **-BL**).

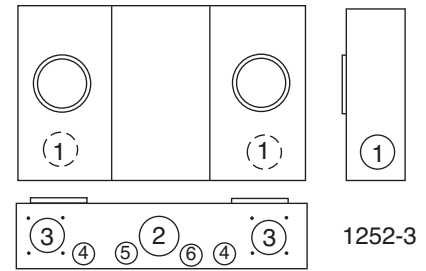
BUSSING: 1/4 x 1" aluminum bussing is supplied. Refer to general engineering section for information on ampacity of bus.

Utility requirements for this equipment may vary. Always consult the serving utility for their requirements before ordering or installing equipment in this catalog.

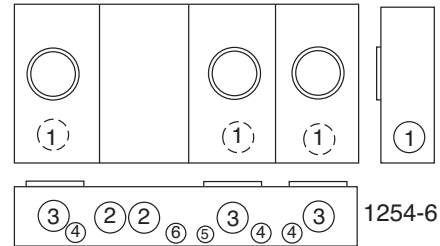




U1252-X-KK-K3-BLG



1252-3



1254-6

200 AMP / POSITION-4 TERMINAL-RINGLESS-1Ø3W-OH/UG

UTIL. APRVL	AMPS	NO. OF POS.	CATALOG NUMBER	HUB	CONNECTOR CU/AL		BY-PASS	DIMENSIONS			CONCENTRIC K.O.'S					
					LINE	LOAD		D"	W"	H"	1	2	3	4	5	6
ALLEG-GPU-PPL	200	2	U1252-X-KK-K3-BLG*	C.P.	#4-600 kcmil or (2) 1/0-250 kcmil	#6-350 kcmil	HORN	5 1/8	26 1/2	14	2 1/2	3	2 1/2	1/2	1/4	1
ALLEG-PECO	200	2	U1252-X-KK-K3-BL**	C.P.	#4-600 kcmil or (2) 1/0-250 kcmil	#6-350 kcmil	HORN	5 1/8	26 1/2	14	2 1/2	3	2 1/2	1/2	1/4	1
CON	200	2	U1252-X-KK-K3-DPL	C.P.	#4-600 kcmil or (2) 1/0-250 kcmil	#6-350 kcmil	HORN	5 1/8	26 1/2	14	2 1/2	3	2 1/2	1/2	1/4	1
ALLEG-GPU-PPL	200	3	U1253-X-KK-K3-BLG*	C.P.	#4-600 kcmil or (2) 1/0-250 kcmil	#6-350 kcmil	HORN	5 1/8	34 11/16	14	2 1/2	3	2 1/2	1/2	1/4	1
ALLEG-PECO	200	3	U1253-X-KK-K3-BL**	C.P.	#4-600 kcmil or (2) 1/0-250 kcmil	#6-350 kcmil	HORN	5 1/8	34 11/16	14	2 1/2	3	2 1/2	1/2	1/4	1
ALLEG-GPU-PPL	200	4	U1254-X-KK-K3-BLG*①	C.P.	#4-600 kcmil or (2) 1/0-250 kcmil	#6-350 kcmil	HORN	5 1/8	42 7/8	16	2 1/2	3	2 1/2	1/2	1/4	1
ALLEG-PECO	200	4	U1254-X-KK-K3-BL**①	C.P.	#4-600 kcmil or (2) 1/0-250 kcmil	#6-350 kcmil	HORN	5 1/8	42 7/8	16	2 1/2	3	2 1/2	1/2	1/4	1
CON	200	4	U1254-X-KK-K3-DPL①	C.P.	#4-600 kcmil or (2) 1/0-250 kcmil	#6-350 kcmil	HORN	5 1/8	42 7/8	16	2 1/2	3	2 1/2	1/2	1/4	1
ALLEG-GPU-PPL	200	5	U1255-X-KK-K3-BLG*①	C.P.	#4-600 kcmil or (2) 1/0-250 kcmil	#6-350 kcmil	HORN	5 1/8	54 7/8	16	2 1/2	3	2 1/2	1/2	1/4	1
ALLEG-PECO	200	5	U1255-X-KK-K3-BL**①	C.P.	#4-600 kcmil or (2) 1/0-250 kcmil	#6-350 kcmil	HORN	5 1/8	54 7/8	16	2 1/2	3	2 1/2	1/2	1/4	1
ALLEG-GPU-PPL	200	6	U1256-X-KK-K3-BLG*①	C.P.	#4-600 kcmil or (2) 1/0-250 kcmil	#6-350 kcmil	HORN	5 1/8	63 1/16	18	2 1/2	3	2 1/2	1/2	1/4	1
ALLEG-PECO	200	6	U1256-X-KK-K3-BL**①	C.P.	#4-600 kcmil or (2) 1/0-250 kcmil	#6-350 kcmil	HORN	5 1/8	63 1/16	18	2 1/2	3	2 1/2	1/2	1/4	1
CON	200	6	U1256-X-KK-K4-DPL①	(2)C.P.	#4-600 kcmil	#6-350 kcmil	NONE	5 1/8	63 1/16	18	2 1/2	3	2 1/2	1/2	1/4	1

HUB: For proper hub selection refer to the hub suffix chart on the accessory page. For the **U1255-1256** units, two hub openings are supplied and the extra opening is closed with a closing plate as standard.

FIFTH TERMINAL: For field mounted fifth terminal, order catalog number **K5T** for each meter position, nine o'clock position only.

CONNECTORS: Extruded aluminum connectors are tin plated.

BUSSING: Bussing is 5/16" x 1" aluminum on the **U1252-1253**. On the **U1254-6** gangs the bussing is 3/8" x 1" aluminum.

BYPASS: Units provided with horn type bypass (suffix **-KK**).

* Barrel lock with guard provision (suffix **-BLG**).

** Barrel lock (suffix **-BL**).

① **FOR OVERHEAD SERVICE:** The **U1254-1256** units are factory assembled for underground service. If overhead service is desired an extension kit is required. Order catalog number **K3923** for the **U1254** and **U1255** units and **K3955** for the **U1256** unit.

Utility requirements for this equipment may vary. Always consult the serving utility for their requirements before ordering or installing equipment in this catalog.

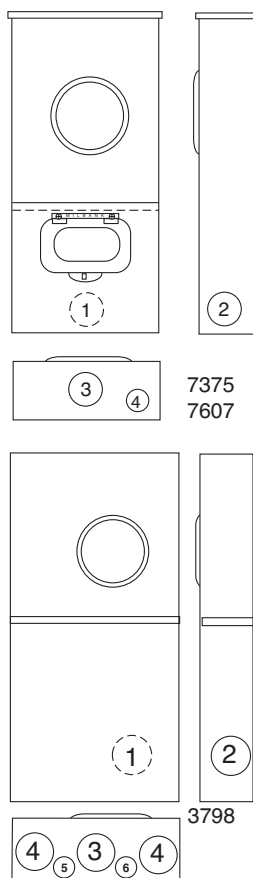


200 AMP / POSITION-4 TERMINAL-HORIZONTAL GANGS-RINGLESS-300 VAC

100-200 AMP-4 TERMINAL-METER MAINS-RINGLESS



U7375-RL-KK



U7607-RL-200-KK

100-200 AMP-4 TERMINAL-METER MAIN

UTIL. APRVL	AMP	SERV-ICE	CATALOG NUMBER	HUB	CONNECTORS		BY-PASS	DIMENSIONS			CONCENTRIC K.O.'S					
					LINE	LOAD		D"	W"	H"	1	2	3	4	5	6
GPU	100	OH	U7375-RL-KK	H.O.	#6-2/0	C.B	HORN	3 ³ / ₄	8 ¹ / ₈	22	1 ¹ / ₄	1 ¹ / ₄	1 ¹ / ₄	1 ¹ / ₄ , 1 ¹ / ₂	-	-
GPU	200	OH	U7607-RL-200-KK	H.O.	#6-350 kcmil	1/0-300 kcmil	HORN	4 ¹ / ₂	8 ¹ / ₈	29	2	2	2	1 ¹ / ₄ , 1 ¹ / ₂	-	-

150-200 AMP-4 TERMINAL-METER MAIN-SIDE WIREWAY

UTIL. APRVL	AMP	SERV-ICE	CATALOG NUMBER	HUB	CONNECTORS		BY-PASS	DIMENSIONS			CONCENTRIC K.O.'S					
					LINE	LOAD		D"	W"	H"	1	2	3	4	5	6
GPU	150	UG	U3798-O-150-KK	BLANK	#6-350 kcmil	1/0-300 kcmil	HORN	4 ⁷ / ₈	13	25 ¹³ / ₁₆	2 ¹ / ₂	2 ¹ / ₂	3	3	1 ¹ / ₄	1 ¹ / ₄ , 1 ¹ / ₂
GPU	200	UG	U3798-O-200-KK	BLANK	#6-350 kcmil	1/0-300 kcmil	HORN	4 ⁷ / ₈	13	25 ¹³ / ₁₆	2 ¹ / ₂	2 ¹ / ₂	3	3	1 ¹ / ₄	1 ¹ / ₄ , 1 ¹ / ₂

HUB: For proper hub selection refer to the hub suffix chart on the accessory page.

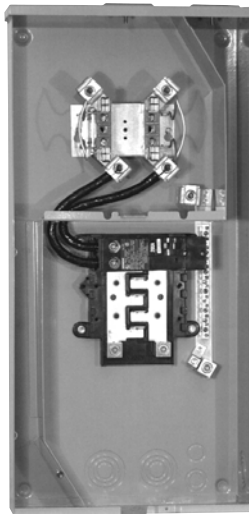
FIFTH TERMINAL: For field mounted fifth terminal: order catalog number **K5T** to fit into square opening at the 9 o'clock position of the *new style block* (#6-350 kcmil.) Order catalog number **5T8K2** to fit into round opening at the 9 o'clock position of the *old style block* (#6-2/0 kcmil.)

BYPASS: Units provided with horn type bypass (suffix **-KK**).

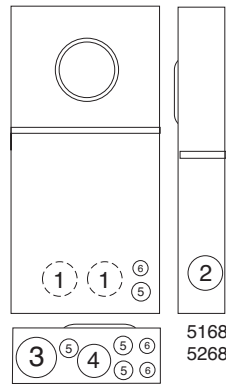
CONNECTORS: Extruded aluminum connectors are tin plated.

Utility requirements for this equipment may vary. Always consult the serving utility for their requirements before ordering or installing equipment in this catalog.

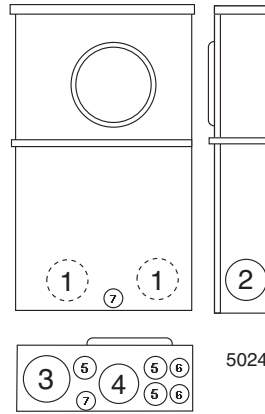




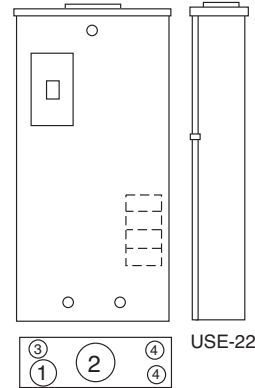
U5168-XTL-200



5168
5268



5024



USE-22



USE-22-200-MB

200 AMP-4 TERMINAL-METER MAIN-22K AIC-120/240 VOLT-1Ø3W

UTIL. APRVL	AMP	SERVICE	CATALOG NUMBER	HUB	CONNECTORS		BY-PASS	DIMENSIONS			CONCENTRIC K.O.'S					
					LINE	LOAD		D"	W"	H"	1	2	3	4	5	6
—	200	OH/ UG	U5168-XTL-200	C.P.	#6-350 kcmil	#1/0-300 kcmil Breaker*	NONE	4 1/2	14 1/8	32	2	2	3	2 1/2	1 1/2, 3/4, 1	1 1/2, 3/4
GPU	200	OH/ UG	U5168-XTL-200-KK	C.P.	#6-350 kcmil	#1/0-300 kcmil Breaker*	HORN	4 1/2	14 1/8	32	2	2	3	2 1/2	1 1/2, 3/4, 1	1 1/2, 3/4
—	200	OH/ UG	U5268-XTL-200	C.P.	#6-350 kcmil	Breaker	NONE	4 1/2	14 1/8	32	2	2	3	2 1/2	1 1/2, 3/4, 1	1 1/2, 3/4
GPU	200	OH/ UG	U5268-XTL-200-KK	C.P.	#6-350 kcmil	Breaker	HORN	4 1/2	14 1/8	32	2	2	3	2 1/2	1 1/2, 3/4, 1	1 1/2, 3/4

HUB: Supplied with (2) closing plates packed inside. Order hubs as a separate item. See accessory page for hub options.

INTERIOR: U5168 units have 8-circuit interior; U5268 units have 20-circuit interior.

FIFTH TERMINAL: Order K5T and field install for 208Y/120 network systems. Installs in the 9 o'clock position only.

BREAKERS: Rated 22K AIC with Milbank QNR2200H main installed.

INTERLOCK KIT: For generator auxiliary circuit breaker interlock, order K5815 for large QN with small frame Q; order K5820 for large frame QN with large frame QN.

***SUB-FEED LUGS:** #6-350 kcmil sub-feed lugs provided on 8 circuit interior. Not available on 20 circuit interior.

4 TERMINAL-RINGLESS-METER SOCKET / CB COMBO

UTIL. APRVL	AMPS	SERVICE	CATALOG NUMBER	HUB	CONNECTORS	BY-PASS	DIMENSIONS			CONCENTRIC K.O.'S						
					CU/AL		LINE	D"	W"	H"	1	2	3	4	5	6
—	200	OH/UG	UAP5024-XL	C.P.	#6-350 kcmil	NONE	4 1/2	14 1/8	24	2	2	3	2 1/2	1 1/2, 3/4, 1	1 1/2, 3/4	1 1/4, 1/2

BUSSING: Load side bus bars and circuit breaker interior are made from plated copper

WIREWAY: Provided with underground pull section wireway with removable cover

BREAKERS: Breaker section has provision for six double pole plug-in circuit breakers. All circuit breakers will be parallel. To comply with NEC wire bending space requirements, the maximum single breaker amperage is 200 amps restricted to 3/0 copper conductor.

200 AMP-1Ø3W-10K AIC RATING

UTIL. APRVL	SERVICE	CATALOG NUMBER	BREAKERS INSTALLED	ADDITIONAL CIRCUITS	HUB	CONNECTORS	DIMENSIONS			CONCENTRIC K.O.'S			
						LINE	D"	W"	H"	1	2	3	4
—	OH	USE-22-200-MB	UQFB-M-200	4-Branch	2"	2/0-300 kcmil	4	8 1/8	22 5/8	1	2	1 1/2, 3/4	1 1/2, 3/4

NOTE: The neutral bus/ground bar is factory installed.

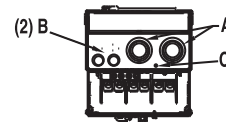
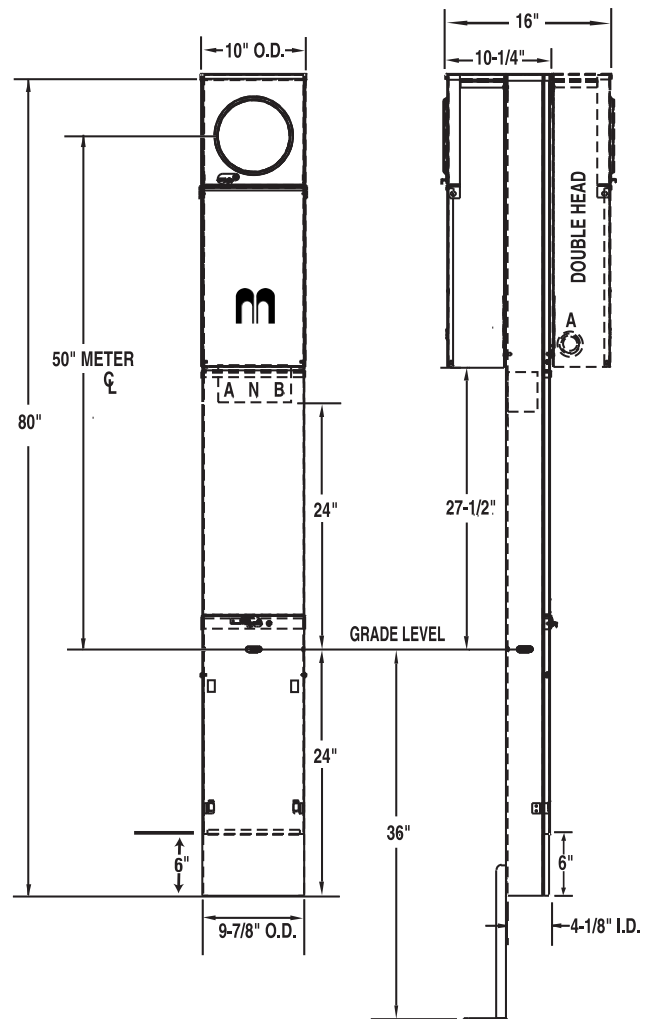
USE-22-200-MB: 200 amp main with provisions for 200 AMP direct wire feeder. 200 amp bolt-on breaker wired in series with plug-in style bus. Space for four single pole or two 2-pole plug-in, branch circuit breakers. One 2" hub included. Quadplex style breakers may be used in accordance with the NEC.

Utility requirements for this equipment may vary. Always consult the serving utility for their requirements before ordering or installing equipment in this catalog.





U5136-O-200S with series wired main & K5400-520GR kit



KO's	
A	= 1, 1-1/4, 1-1/2, 2
B	= 1/2, 3/4
C	= 1/4 SOLID

SPECIFICATIONS

- UL listed File E90945
- 200 amp maximum, 120/240 volt, single phase, three wire meter socket
- Ringless meter socket with horn bypass and stainless steel latch
- Short circuit withstand rating 22K AIC
- Type 3R construction for durable outdoor use, one piece post – lockable and sealable
- Milbank grey polyester powder coat finish
- Wire terminations accept copper or aluminum conductors
- Line & Neutral: (2) #6-350 kcmil per phase
- Line Ground: (4) #14-1/0
- Load (CB): 2/0 to 300 kcmil per pole
- Load Neutral: (1) #6-350 kcmil
- Load Ground: (2) #14-1/0, (4) #14/6
- Milbank plug-in main circuit breaker. Available in 100, 125, 150 & 200 amp. Type UQFPH-M.
- Four-circuit plated copper interior accepts (2) 2-pole or (4) 1-pole standard plug-in type circuit breakers up to a total of 125 amps maximum. Acceptable manufacturers: Cutler-Hammer, GE or Siemens
- Factory or field installable receptacle bridge and receptacle / circuit breaker kits available. See accessories.

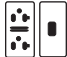


SINGLE PEDESTAL (Direct Burial)

<u>Util App</u>	<u>CATALOG NUMBER</u>	<u>MAIN BREAKER</u>	<u>MAIN CB</u>	<u>BRANCH</u>	<u>WEIGHT (lbs)</u>
GPU-PPL	◆ U5136-O-100S	◆ UQFPH-M-100 Series	100	4 Circuit	82
GPU-PPL	◆ U5136-O-200S	◆ UQFPH-M-200 Series	200	4 Circuit	82
—	◆ U5136-O (parallel wired)	provision for UQFPH-M	—	4 Circuit	80

DOUBLE PEDESTAL (Direct Burial)

<u>Util App</u>	<u>CATALOG NUMBER</u>	<u>MAIN BREAKER</u>	<u>MAIN CB</u>	<u>BRANCH</u>	<u>WEIGHT (lbs)</u>
GPU-PPL	◆ U5137-O-100S	(2) UQFPH-M-100 Series	100	4 Circuit	115
GPU-PPL	◆ U5137-O-200S	(2) UQFPH-M-200 Series	200	4 Circuit	115
—	◆ U5137-O (parallel wired)	provision for (2) UQFPH-M	—	4 Circuit	111

RECEPTACLE / CIRCUIT BREAKER KITS AND ACCESSORIES (ORDER SEPARATELY)

<u>CATALOG #</u>	<u>RECEPTACLE</u>	<u>CIRCUIT BREAKER</u>	<u>CONDUCTOR CONFIGURATION</u>
◆ K5400-520GR	5-20R Duplex GFI	20 Amp, 1 Pole	12 Awg  GFI Rec.
◆ K5400-TT30	TT30R	30 Amp, 1 Pole	10 Awg 
◆ K5400-1450	14-50R	50 Amp, 2 Pole	8 Awg 
◆ K5400-BRIDGE-1POS	Self-grounded one position receptacle bridge with hardware		
◆ K5400-BRIDGE-2POS	Self-grounded two position receptacle bridge with hardware		
◆ K5415	Stabilizer Foot with hardware		
◆ K5T	5th Terminal for 208y / 120 volt 3-wire service		
◆ K5193	Bus kit to convert series-wired main breaker to parallel		
◆ K5194	Wire kit to convert parallel-wired main breaker to series		
◆ K3450	Telephone / CATV mounting bracket (mounts left or right)		

- Up to two receptacle / circuit breaker kits can be field-installed in each powerhead. Order mounting bridge and receptacle kits separately from above. For three receptacles or factory-installed kits, contact factory.
- Receptacle / circuit breaker kits include receptacle, circuit breaker, connected wire, cover plate and mounting screws. Other receptacle / circuit breaker kits available.
- **K5415** Stabilizer Foot sold separately. Recommended for double pedestals.
- Pad mount pedestals require **K5035** pad mount kit. Order separately.
- ◆ Stock item – availability subject to prior sale.

Utility requirements for this equipment may vary. Always consult the serving utility for their requirements before ordering or installing equipment in this catalog.



FEATURES: Supplied with studs, three point locking handle, continuous hinge and pad-lock provision. Single door provided on units less than 36" wide. *Steel panels and plywood backboard are optional.*

NOTE: Other sizes of Outdoor Transformer Cabinets are available. Please refer to the Milbank Commercial Electrical Enclosure catalog, featuring NEMA-rated sheet metal products.

UL LISTED-OUTDOOR TRANSFORMER CABINETS*-CONTINUOUS HINGE-NEMA 3R-PADLOCKABLE

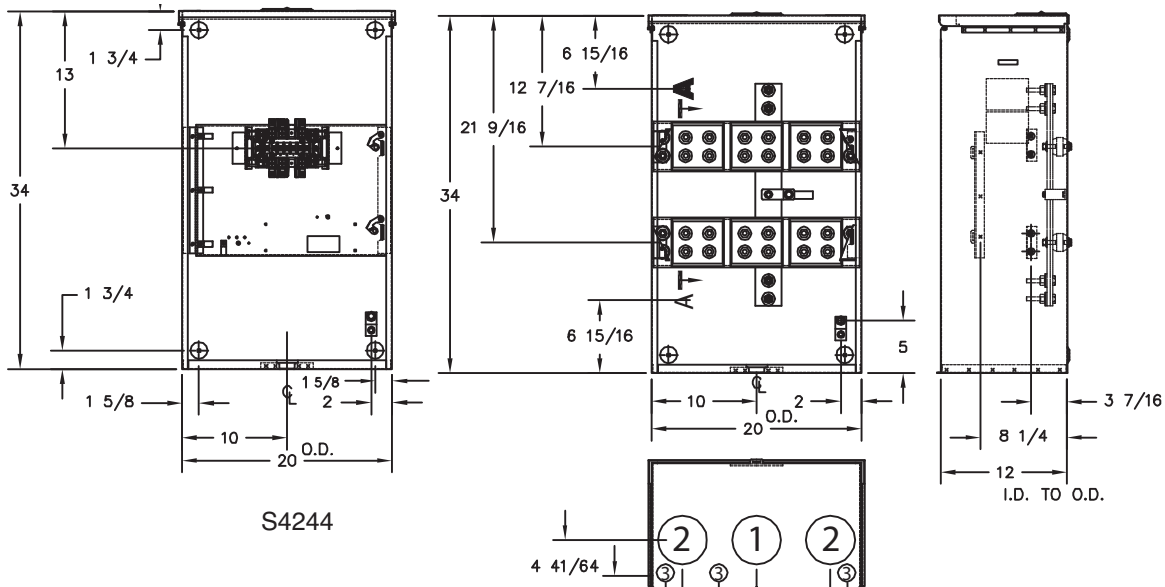
UTIL. APRVL	CATALOG NUMBER	DIMENSIONS			GAUGE OF STEEL	PANEL SIZE		PANEL & BACKBOARD CATALOG NUMBERS	
		D"	W"	H"		W" X H"		PAINTED STEEL PANEL	WOOD BACKBOARD
PPL	363612-CT3R-SP ^②	12	36	36	14	33	33	A-36P36	A-36P36W
PPL	484812-CT3R-SP ^②	12	48	48	14	45	45	A-48P48	A-48P48W
GPU	U5838-O ^①	10	36	36	12	-	-	CT mounting rack included	CT mounting rack included

① C.T. MOUNTING RACK: This unit accommodates 3 donut style C.T.s. Removable cover for easier wiring.

② Double Door Units



TRANSFORMER RATED SOCKETS



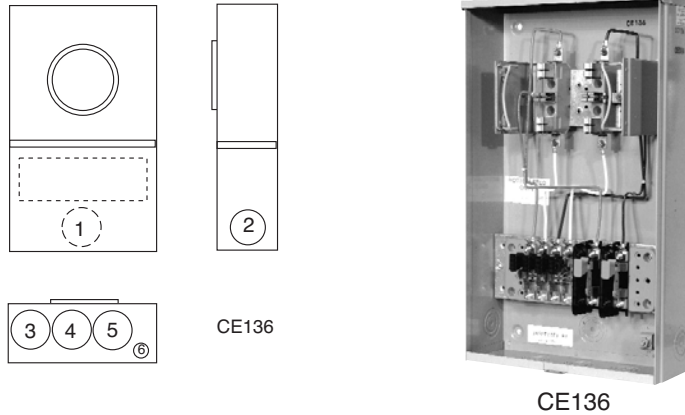
400A TRANSOCKET

UTIL. APRVL	AMPS	NO. OF TERMS	PHASE	CATALOG NUMBER	DIMENSIONS			CONCENTRIC K.O.'S					
					D"	W"	H"	1	2	3	4	5	6
-	400	13	3∅	S4244-X*	12	20	34	4	4	1	-	-	-

***This item is NOT UL Listed.**

Utility requirements for this equipment may vary. Always consult the serving utility for their requirements before ordering or installing equipment in this catalog.

TRANSFORMER RATED SOCKETS



20A TEST SWITCH ENCLOSURE

UTIL. APRVL	AMPS	NO. OF TERMS	PHASE	CATALOG NUMBER	DIMENSIONS			CONCENTRIC K.O.'S					
					D"	W"	H"	1	2	3	4	5	6
PECO	20	6	1Ø	CE136	4 1/8	12	20	1 1/4	1 1/4	1 1/4	1 1/4	1 1/4	1 1/4, 1/2

30 & 60 AMP-FUSIBLE / NON-FUSIBLE-AC DISCONNECTS



PROFILE

Milbank's air conditioner disconnect has a removable hinged cover which makes wiring a breeze. Our compact design meets all wire bending space requirements in the NEC and also complies with article 440-14 in the NEC. To insure the safest conditions, we designed our disconnect pullers to be removable or they may be reinstalled in the "off" position. Another safety feature is the padlock provision on the front cover. As with all Milbank products, our enclosure is constructed of G90U galvanized steel and finished with an attractive, light gray, baked powder coating. Our state of the art finish combines epoxy and polyester hybrid resins into a hybrid powder coating which is then electrostatically applied. This offers a durable, nonfading finish.

AMP	TYPE	CATALOG NUMBER	MAX H.P.	WT. @ #	LINE & LOAD WIRE RANGE		GROUND WIRE RANGE	DIMENSIONS			WIRE RATING	
					CU	AL	CU/AL	D"	W"	H"	CU °C	AL °C
30	FUSIBLE	U3830	3	2.7	#14-#3 AWG	#14-#3 AWG	#14-3 AWG	2-5/8	5	7	60°/75°	60°/75°
60	FUSIBLE	U3860	10	3.3	#14-#3 AWG	#14-#3 AWG	#14-3 AWG	3	5	9 1/4	60°/75°	60°/75°
60	NONFUSIBLE	U3800	10	3.25	#14-#2 AWG	#12-#2 AWG	#14-3 AWG	3	5	8	60°/75°	60°/75°
60	NONFUSIBLE	U3801	10	2.5	#14-#3 AWG	#14-#3 AWG	#14-3 AWG	2-3/8	5	6-3/4	60°/75°	60°/75°

✓ U/L listed as Enclosed Pullout Switch

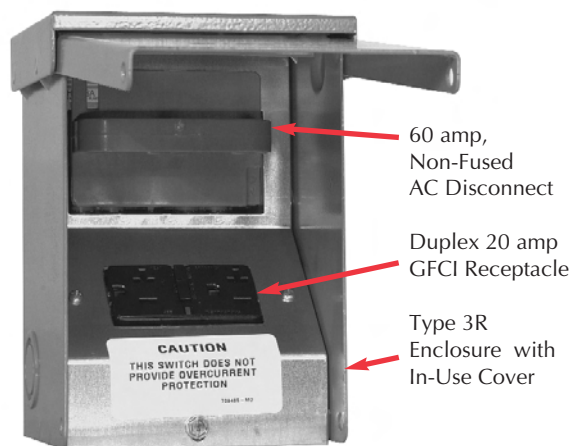
✓ Type 3R Rainproof

✓ 1Ø, 240 VAC

✓ Six one-inch concentric knockouts



Combination AC Disconnect / 20 Amp GFCI Receptacle—Together in 1 Box



U3822-20GR

- Meets NEC # 210.63 Requirements *
- UL Listed as Power Outlet
- Type 3R Enclosure
- In-Use Cover**
- Duplex Ground Connector
- 1" Concentric Knockouts

AC DISCONNECT

- 1Ø, 240 Volt
- 60 amp, Non-Fused

GFCI RECEPTACLE

- 20 amp
- Reset/Test Button
- Padlock provision

* NEC® #210.63 Heating, Air-Conditioning and Refrigeration Equipment Outlet.

...The receptacle shall be located on the same level and within 7.5 m (25 ft.) of the heating, air-conditioning and refrigeration equipment.

* NEC® #210.08 Ground-Fault Circuit- Interruptor protection for personnel.

AMP	TYPE	CATALOG NUMBER	MAX H.P.	WT. #	LINE & LOAD CONNECTOR WIRE RANGE		GROUND CONNECTOR WIRE RANGE	DIMENSIONS			WIRE RATING	
					CU	AL	CU/AL	D"	W"	H"	CU °C	AL °C
60	NONFUSIBLE	U3822-20GR	10	6	#14-#2 AWG	#12-#2 AWG	#14-4 AWG	4.8	5.25	7.4	60°/75°	60°/75°

To ensure the safest conditions, Milbank disconnect pullers are designed to be reversible so they may be reinstalled in the OFF position. All units are designed with a padlock provision on the cover for security.

****Note:** U3822-20GR cover rated as *IN-USE COVER* (Cover may be closed with cords plugged into receptacle).

*Reprinted with permission from NFPA 70-2002, *National Electrical Code*®, Copyright 2001, National Fire Protection Association, Quincy, MA 02269. This reprinted material is not the complete and official position of the NFPA on the referenced subject, which is represented only by the standard in its entirety. National Electrical Code® and NEC® are registered trademarks of the National Fire Protection Association, Quincy, MA.

Hot Tub Disconnect or Sub Panel Breaker Enclosure—Type 3R

Spa Box with GFCI Protection



U4881-O-50GB

- 240 volt ground fault protection
- UL listed, Type 3R rainproof
- Milbank reliability
- Easy installation
- 2 pole, 50 amp GFCI breaker protection
- Compact size:
8-1/2" H x 7-1/2" W x 3-3/4" D
- 3 or 4 wire installation
- 1Ø, 120 / 240 VAC
- Standard package of 12
- 2 extra one-pole breaker spaces
- 100 amp overall rating

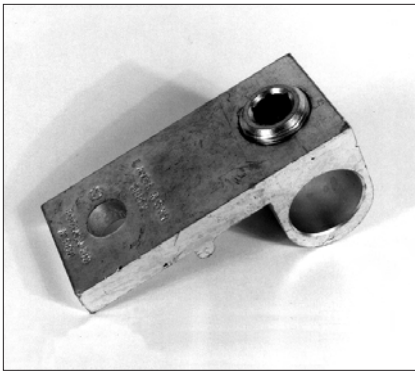
Sub Panel Breaker Enclosure

- Use as a 100 amp, 4 circuit sub panel enclosure
- U4881-O has provision for (2) 2-pole or (4) 1-pole small frame breakers

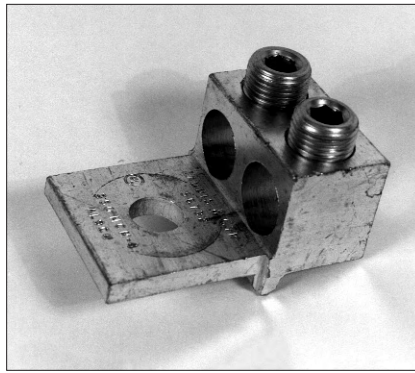


AMP	TYPE	CATALOG NUMBER	WT. #	LINE & LOAD CONNECTOR WIRE RANGE		GROUND CONNECTOR WIRE RANGE	DIMENSIONS		
				CU	AL	CU/AL	D"	W"	H"
—	BREAKER PROVISION	U4881-O	7	#14-1/0	#14-1/0	#14-1/0	3 3/4	7 1/2	8 1/2
50	BREAKER	U4881-O-50GB	8	#14-1/0	#14-1/0	#14-1/0	3 3/4	7 1/2	8 1/2
60	BREAKER	U4881-O-60GB	8	#14-1/0	#14-1/0	#14-1/0	3 3/4	7 1/2	8 1/2

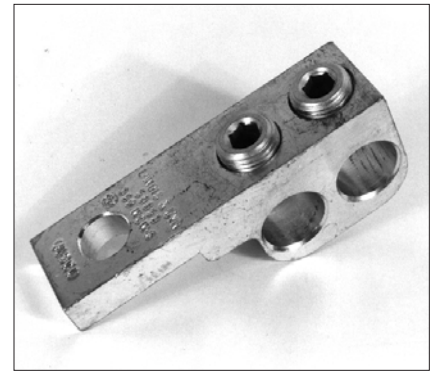




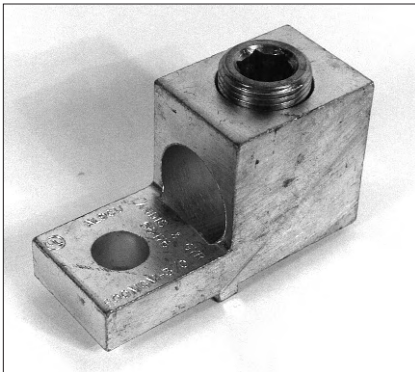
#Z703916-AC #58852



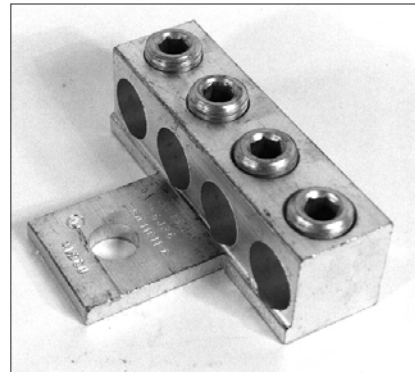
#Z703918-AC #56732
#Z704694-AC #56732-M



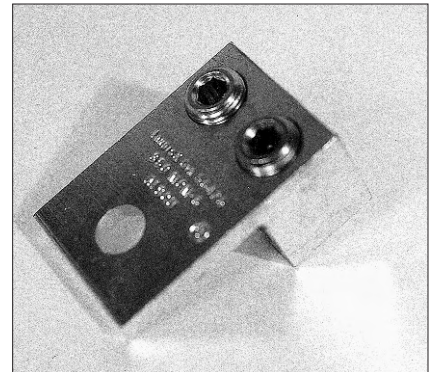
#Z703919-AC #58853
#Z704693-AC #56427-M



#Z703921-AC #56476

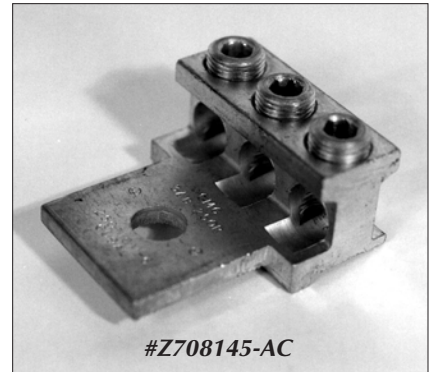
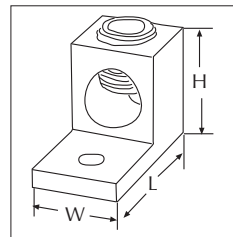


#Z705420-AC #56426



#Z705456-AC #56425

Bolt-on type lugs for Milbank stud type meter mounting devices are made of 6061-T6 aluminum to provide high strength and high conductivity. All lugs are tin-plated to ensure low contact resistance and to reduce corrosion. Allen or hex head pressure screws are furnished to provide excellent conductor spread for maximum binding action with the lug.



#Z708145-AC

MILBANK CONN. #	L&G CONN NO.	NO. OF CONDUCTORS & SIZE	STUD OPENING	PRESSURE SCREW HEAD	DIMENSIONS		
					L"	W"	H"
Z703916-AC	58852	3/0-800 kcmil	9/16"	1/2" Allen	3 15/16	1 3/4	1 13/16
Z703917-AC	56427	Two #6-350 kcmil	9/16"	5/16" Allen	4 5/16	1 1/8	2 1/16
Z703918-AC	56732	Two #4-350 kcmil	9/16"	5/16" Allen	2 7/8	1 59/64	1 1/4
Z703919-AC	58853	Two #6-350 kcmil	9/16"	5/16" Allen	3 15/16	1 1/8	1 1/2
Z703921-AC	56476	3/0-800 kcmil	9/16"	1/2" Allen	3 1/4	1 5/16	1 13/16
Z704693-AC	56427-M	Two #2-500 kcmil	9/16"	3/8" Allen	4 1/4	1 1/8	1 13/16
Z704694-AC	56732-M	Two #4-500 kcmil	9/16"	3/8" Allen	2 19/16	2 5/32	1 13/16
Z705420-AC	56426	Four #6-350 kcmil	17/32"	5/16" Allen	2 7/8	3 15/16	1 9/16
Z705456-AC	56425	Two #6-350 kcmil	9/16"	5/16" Allen	2 7/8	1 57/64	1 1/4
Z708145-AC	68752-1	Three #6-250 kcmil	9/16"	5/16" Allen	2 7/8	2 1/2	1 5/16

Utility requirements for this equipment may vary. Always consult the serving utility for their requirements before ordering or installing equipment in this catalog.

INTERCHANGEABLE UNIT HUBS

SMALL "RL" OPENING (STANDARD)

SUFFIX	SIZE	MILBANK NO.
WL	1"	A7514
YL	1 1/4"	A7515
ZL	1 1/2"	A7516
DL	2"	A7517
EL	2 1/2"	A7518



LARGE "R" OPENING (HEAVY DUTY)

SUFFIX	SIZE	MILBANK NO.
F	3"	A8110
G	3 1/2"	A8111
H	4"	A8112



HUB ADAPTER PLATE (Converts 4" opening to 2 1/2" opening) S8324



REMOVABLE HUB CLOSING PLATE

DESCRIPTION	SUFFIX	CAT. #
STANDARD (for -RL opening)	-XL	A7551
LARGE (for -R opening)	-X	A9064
ADAPTER (R to RL)	-RRL	S8324

HUB SUFFIX CHART

SUFFIX	DESCRIPTION	SUFFIX	SIZE	APPLICATION
O	Plain Top	WL	1"	For -RL Opening
RL	Small Hub Opening	YL	1 1/4"	For -RL Opening
R	Large Hub Opening	ZL	1 1/2"	For -RL Opening
XL	Small Closing Plate	DL	2"	For -RL Opening
X	Large Closing Plate	EL	2 1/2"	For -RL Opening
RXL	Large Hub Opening adapted to small Closing Plate	F	3"	For -R Opening
RRL	Large Hub Opening adapted to small Hub Opening	G	3 1/2"	For -R Opening
		H	4"	For -R Opening

CONNECTOR KITS

SINGLE LUG ASSEMBLY

SUFFIX	CATALOG #	(3 per set) - 1 Ø
K1	K1539	6-350 kcmil
K3	K1540	4-600 kcmil or (2) 1/0-250 kcmil
K3L	K1540L	4-600 kcmil or (2) 1/0-250 kcmil Non-rotating

For use with 3/8"-16 stud type units only



K1540

SUFFIX	CATALOG #	(4 per set) - 3 Ø
K5	K3082	6-350 kcmil
K7	K3441	4-600 kcmil or (2) 1/0-250 kcmil

TWIN LUG ASSEMBLY

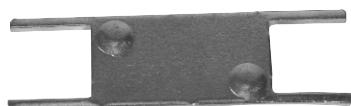
SUFFIX	CATALOG #	(3 per set) - 1 Ø
K2	K1350	6-350 kcmil
K2L	K1350L	6-350 kcmil Non-rotating
K4	K1541	4-600 kcmil



K1541

SUFFIX	CATALOG #	(4 per set) - 3 Ø
K6	K3442	6-350 kcmil
K8	K3083	4-600 kcmil

ANTI-INVERSION CLIP

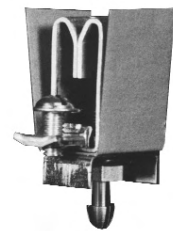


K4802

5TH TERMINAL



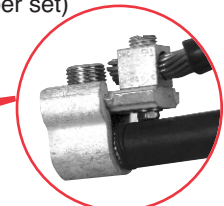
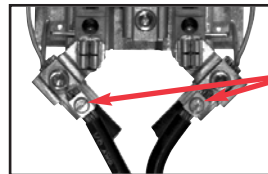
K5T FIFTH TERMINAL (New style block with square hole)



"PLUG-IN" FIFTH TERMINAL 5T8K2 (Old style block with round hole)

LOAD TAP CONNECTORS (3 per set)

Replaces the **load side** slide-in nut assembly on Milbank 200 amp sockets. Allows for a 100 amp tap location in addition to the #6-350 kcmil load-side connector. **K5022** Includes Safety Barrier Extensions—for applications over 300 VAC.

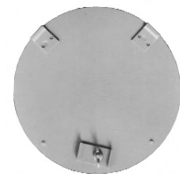


K4977-INT
K5022-INT (Internal hex)

CLOSING COVERS



METER CLOSING PLATE (Ring type / Ringless) 6003 (Gray Plastic) 6116 (Clear Plastic)



METAL CLOSING PLATE (For Ringless sockets) CP-21 (For Ring type sockets) MCP

Utility requirements for this equipment may vary. Always consult the serving utility for their requirements before ordering or installing equipment in this catalog.

CATALOG NO.	Allegh.	Duques.	GPU	PPL	PECO	Connectiv	PSEG
125A 4-T OU							
U7274-YL-KK	X	X					
U7487-RL-TG-KK	X		X	X			
U7487-RL-TG-KK-BLG	X		X	X			
U7487-YL-TG-KK-BLG	X						
U7487-RL-KK-BL	X				X		
125A 5-T OU							
U8569-YL-KK-BLG							X
125A 7-T OH							
U1276-RL-BLG			X				
U1277-RXL-BLG			X				
200A 4-T OH							
U7021-RL-KK-BL	X				X		
U7021-RL-KK-DLC		X					
U7021-RL-TG-KK-BLG	X		X	X			
200A 4-T OU							
U7040-XL-TG-KK	X						
U7040-RL-KK-DPL						X	
200A 4-T UG							
U1980-O-KK-BL	X				X		
U1980-O-KK-DPL						X	
U3126-O-KK-BLG	X		X	X			
U3126-O-KK-DLC		X					
U4413-O-KK-BLG	X		X	X			
200A 5-T OH or OU							
U1260-RL-TG-KK-BLG			X				
U8173-XL-KK-BLG (OU)							X
U9551-X-DPL (OU)						X	
200A 7-T OH							
U9700-RRL-BLG	X		X	X			X
U9701-RRL	X						
200A 7-T OU							
U7423-RXL					X		
U4029-X-DPL						X	
U1279-X-BLG							X
U9701-RRL-BLG	X		X	X			
200A 7-T UG							
U3786-O-BLG			X	X			
320A 4-T UG							
U1729-X-DPL						X	
U3939-X	X			X			
U1797-O-K3L-K2L	X						
U3000-O-2/K3L-BL					X		
320A 4-T OU							
U1779-R-K3-BLG			X				
U4912-X-K3-BLG			X				
320A 7-T OU							
U4168-X-K7-BLG	X		X	X			
U2120-O	X						
U4664-X-8522-DPL						X	
U4667-X-8043-DPL						X	
100A GANG SOCKETS							
U8032-XL-KK-BLG	X		X				
U8032-XL-KK-BL	X				X		
U8033-XL-KK-BLG	X		X				

CATALOG NO.	Allegh.	Duques.	GPU	PPL	PECO	Connectiv	PSEG
100A GANG SOCKETS, cont.							
U8033-XL-KK-BL	X				X		
U8034-XL-KK-BLG	X		X				
U8034-XL-KK-BL	X				X		
U8035-XL-KK-BLG	X		X				
U8035-XL-KK-BL	X				X		
U8036-XL-KK-BLG	X		X				
U8036-XL-KK-BL	X				X		
U8212-XL-KK-BLG	X		X	X			
U8213-XL-KK-BLG	X		X	X			
U8214-XL-KK-BLG	X		X	X			
U8215-XL-KK-BLG	X		X				
U8216-XL-KK-BLG	X		X				
U2692-XL-KK-BL	X				X		
U2693-XL-KK-BL	X				X		
150A GANG SOCKETS							
U9312-XL-KK-DLC		X					
U9313-XL-KK-DLC		X					
U9314-XL-KK-DLC		X					
200A GANG SOCKETS							
U1252-X-KK-K3-BLG	X		X	X			
U1252-X-KK-K3-BL	X				X		
U1252-X-KK-K3-DPL						X	
U1253-X-KK-K3-BLG	X		X	X			
U1253-X-KK-K3-BL	X				X		
U1254-X-KK-K3-BLG	X		X	X			
U1254-X-KK-K3-BL	X				X		
U1254-X-KK-K3-DPL						X	
U1255-X-KK-K3-BLG	X		X	X			
U1255-X-KK-K3-BL	X				X		
U1256-X-KK-K3-BLG	X		X	X			
U1256-X-KK-K3-BL	X				X		
U1256-X-KK-K4-DPL						X	
100A METER MAIN OH							
U7375-RL-KK			X				
200A METER MAIN OU							
U7607-RL-200-KK			X				
UAP5024-XL							
U5168-XTL-200							
U5168-XTL-200-KK			X				
U5268-XTL-200							
U5268-XTL-200-KK			X				
200A METER MAIN UG							
U3798-O-150-KK			X				
U3798-O-200-KK			X				
200A METER MAIN OH							
USE-22-200-MB							
200A METERED PEDESTAL							
U5136-O							
U5136-O-100S			X	X			
U5136-O-200S			X	X			
U5137-O							
U5137-O-100S			X	X			
U5137-O-200S			X	X			
CT ENCLOSURES							
U5838-O			X				
CE136					X		
S4244-X							
363612-CT3R-SP				X			
484812-CT3R-SP				X			

Utility requirements for this equipment may vary. Always consult the serving utility for their requirements before ordering or installing equipment in this catalog.

Other quality products available from Milbank

Commercial Pedestals

- Attractive
- Easy to install
- Secure
- Cost effective



Un-Strut Your Stuff...

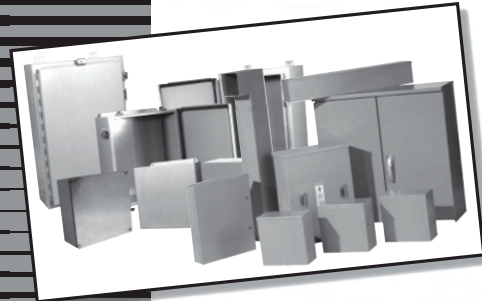


816.483.5314 phone
816.483.6357 fax
www.milbankmfg.com
ComPed 04/05 (2.5K)

COMMERCIAL / INDUSTRIAL ELECTRICAL ENCLOSURES

2008 PRICE LIST

Effective June 2, 2008
Supersedes and cancels all previous Milbank lists.
All prices listed within are subject to change without notice.



MILBANK MFG. CO.
4801 Deramus • PO Box 419028
Kansas City, MO 64141-6028
Tel: 816.483.5314
Fax: 816.483.6357
www.milbankmfg.com



Recreational Vehicle Park Electrical Products & Accessories

Millennium Series

INCLUDES REPLACEMENT PARTS



In addition to your local utility's meter mounting equipment, Milbank also manufactures supporting products, such as...

- Air Conditioner Disconnects**
- Hot Tub Disconnects**
- RV/Mobile Home Power Outlets**
- Terminal Boxes**
- Temporary Power Outlets**
- Commercial Pedestals**
- Commercial Enclosures**
- CT Enclosures**
- Circuit Breakers**
- Distribution Unit Substations**
- Enclosed Circuit Breakers**
- Safety Switches**
- Test Switches**

Contact your local distributor or go to www.milbankmfg.com to find additional product literature.

MAXIMUM NUMBER OF CONDUCTORS IN CONDUIT*

TYPE	CONDUCTOR SIZE AWG, MCM	CONDUIT TRADE SIZES (INCHES)									
		1/2	3/4	1	1 1/4	1 1/2	2	2 1/2	3	3 1/2	4
RHW & RHH (without outer covering) THW	14	6	10	16	29	40	65	93	143	192	
	12	4	8	13	24	32	53	76	117	157	
	10	4	6	11	19	26	43	61	95	127	163
	8	1	3	5	10	13	22	32	49	66	85
	6	1	2	3	7	10	16	23	36	48	62
TW THW FEPB (6 thru 2), RHW and RHH (without outer covering) RH, THHW	1/0		1	1	2	3	5	8	12	16	21
	2/0		1	1	1	3	5	7	10	14	18
	3/0		1	1	1	2	4	6	9	12	15
	4/0			1	1	1	3	5	7	10	13
	250			1	1	1	2	4	6	8	10
	300			1	1	1	2	3	5	7	9
	350				1	1	1	3	4	6	8
	400				1	1	1	2	4	5	7
	500				1	1	1	1	3	4	6
	600					1	1	1	3	4	5
	700					1	1	1	2	3	4
	750					1	1	1	2	3	4

*This table is for concentric stranded conductors only. For cables with compact conductors refer to N.E.C.

*** ALLOWABLE AMPACITIES OF INSULATED COPPER & ALUMINUM CONDUCTORS (3W IN CONDUIT) 75°C (167°F)**

*CU		AL or Cu-Clad AL	
A	B	A	C
18	—	—	—
16	—	—	—
14	20†	—	—
12	25†	12	20†
10	35†	10	30†
8	50	8	40
6	65	6	50
4	85	4	65
3	100	3	75
2	115	2	90
1	130	1	100
1/0	150	1/0	120
2/0	175	2/0	135
3/0	200	3/0	155
4/0	230	4/0	180
250	255	250	205
300	285	300	230
350	310	350	250
400	335	400	270
500	380	500	310
600	420	600	340
700	460	700	375
750	475	750	385

A = Size: AWG/MCM
B = Ampere Rating for Insulation Types:
FEPW, RH, RHW, THW, THWN, XHHW, USE, 2W.

C = Ampere Rating for Insulation Types:
RH, RHW, THW, THWN, XHHW, USE

(Per NEC table 310-16)

AMPACITY CORRECTION FACTORS

AMBIENT TEMP. C°	CORRECTION FACTOR	AMBIENT TEMP. F°
21 - 25	1.05	70 - 77
26 - 30	1.00	79 - 86
31 - 35	.94	88 - 95
36 - 40	.88	97 - 104
41 - 45	.82	106 - 113
46 - 50	.75	115 - 122
51 - 55	.67	124 - 131
56 - 60	.58	133 - 140
61 - 65	.33	142 - 158
66 - 70	—	160 - 176

Overall ampere ratings of UL Listed Milbank multiple position meter sockets are based on **1993 N.E.C. Manual article 220-32 and ANSI / UL-414** (except where restricted by line connector size). These requirements provide for a diversity factor / demand factor being utilized in determining the overall (main bus / lug) rating of a gang socket. All Milbank UL Listed gang sockets meet or exceed these diversity factor/demand factor requirements. Standard overall ampacity ratings for UL Listed and non UL Listed gang sockets are as shown in the chart below. Ampere ratings of meter sockets are based on the meter socket being wired with 75° C insulated wire conductor, sized in accordance with **Table 310-16** of the **National Electric Code**.

GANG SOCKET OVERALL AMPACITIES

NO. OF METER POSITIONS	100A / POS. AMPACITY	125A / POS. AMPACITY	150A / POS. AMPACITY	200A / POS. AMPACITY
2	200A	200A	200A	200A
3	200A	225A	225A	270A
4	200A	250A	270A	360A
5	225A	285A	338A	450A
6	270A	330A	396A	528A

† Unless otherwise permitted elsewhere in the Code, the overcurrent protection for conductor types marked with an obelisk (†) shall not exceed 15 amps for 14 AWG, 20 amps for 12 AWG, and 30 amps for 10 AWG copper; or 15 amps for 12 AWG and 25 amps for 10 AWG aluminum and copper-clad aluminum after any correction factors for ambient temperature and number of conductors have been applied.

All meter sockets are 600 Volt rated unless otherwise noted.

All meter socket ampacity ratings are continuous duty unless otherwise noted.

IMPORTANT NOTE

In addition to national and local electrical codes, many utilities have specific requirements for metering equipment. Always consult the serving utility for their specifications and requirements prior to ordering or installing Milbank meter mounting equipment.

BEFORE ENERGIZING

- A. Give equipment a thorough visual examination to determine that:
 - 1) No shipping or installation damage exists.
 - 2) Proper clearances have been maintained.
 - 3) All connections have been made.
 - 4) Equipment is clean and dry.
- B. Make a thorough examination to verify:
 - 1) Tightness of all bolted connections (see table below).
 - 2) Manually operate all circuit breakers, switches, relays, etc.
 - 3) Check rigidity of all mountings, bus bars and components.
 - 4) Use test equipment to check continuity of circuitry and integrity of insulation.
- C. All switches and circuit breakers should be in the “off” position.
- D. Verify that manual meter bypass (if applicable) is in non-bypass position.
- E. Install cover and/or close doors.
- F. If installation is not being energized at this time, follow “after-energizing” steps listed below. These steps will secure the installation in case of accidental energization.

WHEN ENERGIZING

- A. Use caution and follow established safety procedures:
 - 1) Wear safety apparel.
 - 2) Use safety equipment.
 - 3) Take action to prevent injury to yourself and others in the event of failure of the installation.
 - 4) Take action to prevent/decrease damage to property in the event of failure of the installation.
 - 5) If you are unsure how to safely energize the installation, get someone who is knowledgeable to do it.

AFTER ENERGIZING

- A. Secure the installation:
 - 1) To prevent accidental contact with energized parts, cover all openings with approved filler devices.
 - 2) To prevent unauthorized access, secure all covers and/or doors with approved security devices.
 - 3) Attach/post information to advise others of potential hazards associated with the installation.

RECOMMENDED TORQUE FOR GENERAL APPLICATIONS*

NOMINAL SIZE	JOINT DESCRIPTION		HEAD TYPE	TORQUE (INCH LBS.)
	SCREW	NUT		
10	BRASS	Brass Nut or Extruded Hole	ALL	20-25 in. lbs.
10	STEEL	CU or AL Busbar $\leq 1/8"$	ALL	25-30 in. lbs.
10	STEEL	Steel Nut or EH; CU or AL Busbar $> 1/8"$	ALL	30-35 in. lbs.
12	STEEL	Aluminum Extruded Hole	ALL	30-35 in. lbs.
12	STEEL	Steel Nut or Extruded Hole	ALL	40-50 in. lbs.
1/4	STEEL	Aluminum Extruded Hole	ALL	40-50 in. lbs.
1/4	STEEL	Steel Nut or EH; CU or AL Busbar	ALL	50-60 in. lbs.
5/16	STEEL	Aluminum Extruded Hole	HEX	60-70 in. lbs.
5/16	STEEL	Steel Nut or EH; CU or AL Busbar	HEX	100-150 in. lbs.
3/8	STEEL	Steel Nut	HEX	150-200 in. lbs.
1/2	STEEL	Steel Nut	HEX	200-250 in. lbs.

*Interior labels typically indicate the required torque for wire connectors and studs, and should be referenced first.

EH: Extruded Hole

CU: Copper

AL: Aluminum

MATERIALS

STEEL QUALITY

The meter equipment listed in this catalog is made of galvanized steel (AISI* G90) to afford the best possible weather proofing. *American Iron and Steel Institute.

STEEL SHEET

16 gauge, galvanized, sheet: 0.90 oz./ sq.ft. class zinc-coated.
(AISI G90)
14 gauge, galvanized, sheet: 0.90 oz./ sq.ft. class zinc-coated.

ALUMINUM EXTRUSION

Wire-Terminals: Alloy; 6061-T6, Tin-plated for CU/AL wire.
Bus Bar: Alloy; 6101-o & 6063-O

ALUMINUM SHEET

3000 series aluminum sheet, H14, or 5052 series aluminum sheet, H32. Where applicable thicknesses range from .064 – .125

COPPER SHEET & BUS

Electrolytic copper with tin plating in most applications.

INSULATING MATERIALS

- In most units, support bases for current-carrying components are molded from fiberglass reinforced high-strength, track resistant, thermoset polyester molding compounds.
- Clear or black safety shields and polarity barriers are molded from high-strength, track resistant, polycarbonate molding compounds.
- Various sheet insulating materials, as appropriate for the application are utilized in the fabrication of flat, formed and punched component parts and barriers.

FINISH

PROCESS

Light gray “state of the art” electrostatically applied powder paint offers a durable, non-fading finish. For further information concerning the chemical analysis of the weather resistant finish, please contact the factory.

METAL FASTENERS

Zinc-coated with a chromate dip.

RATING

NEMA RATING

All Milbank meter sockets, CT cans and meter socket / breaker units have a type 3R rating.

Meter Mounting Equipment & More!

Commercial Electrical Enclosures

Residential & Commercial Metering

Commercial Meter Pedestals

Disconnect Devices

Current Transformer Enclosures

RV/MH Pedestals

Temporary Power Outlets

Circuit Breakers

Distribution Unit Substations

Enclosed Circuit Breakers

Safety Switches

Test Switches



SYNERGY ELECTRICAL SALES, INC.

95 Canal Road

Fairless Hills, PA 15601

Tel: 215-428-1130

Fax: 215-428-1137

Toll Free: 800-220-5691

MILBANK MFG. CO.

PO Box 419028

Kansas City, MO 64141-6028

Tel: 816-483-5314 Fax: 816-483-6357

Toll Free: 877-483-5314

www.milbankmfg.com

MILBANK®



www.milbankmfg.com

PENN 9/09 (Web)