

Residential & Small Business **Generators**



CONTROL YOUR POWER. CONTROL YOUR LIFE.

GENERAC[®]





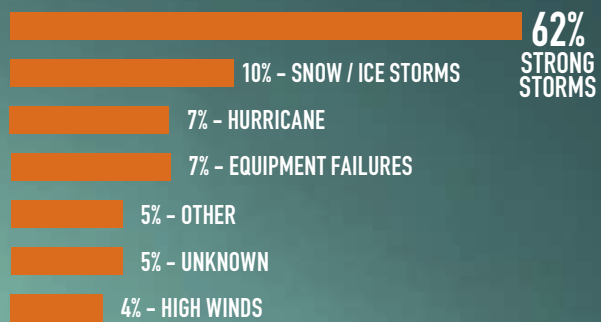
Imagine your life **without** power?

- Refrigeration/freezer for food and medicines
- Furnace
- Air conditioning
- Lighting – inside and outside
- Clean water for drinking and bathing
- Sump pump
- Kitchen appliances
- Contact with the outside world; Internet, cell phone chargers, TV, radio and more
- Washing and drying clothes
- Security system
- Garage door opener
- Fans
- Medical equipment
- Charging power tools for use during the emergency and post-outage cleanup
- Monetary loss from temporary relocation, hotel costs, dining out, property damage, etc.

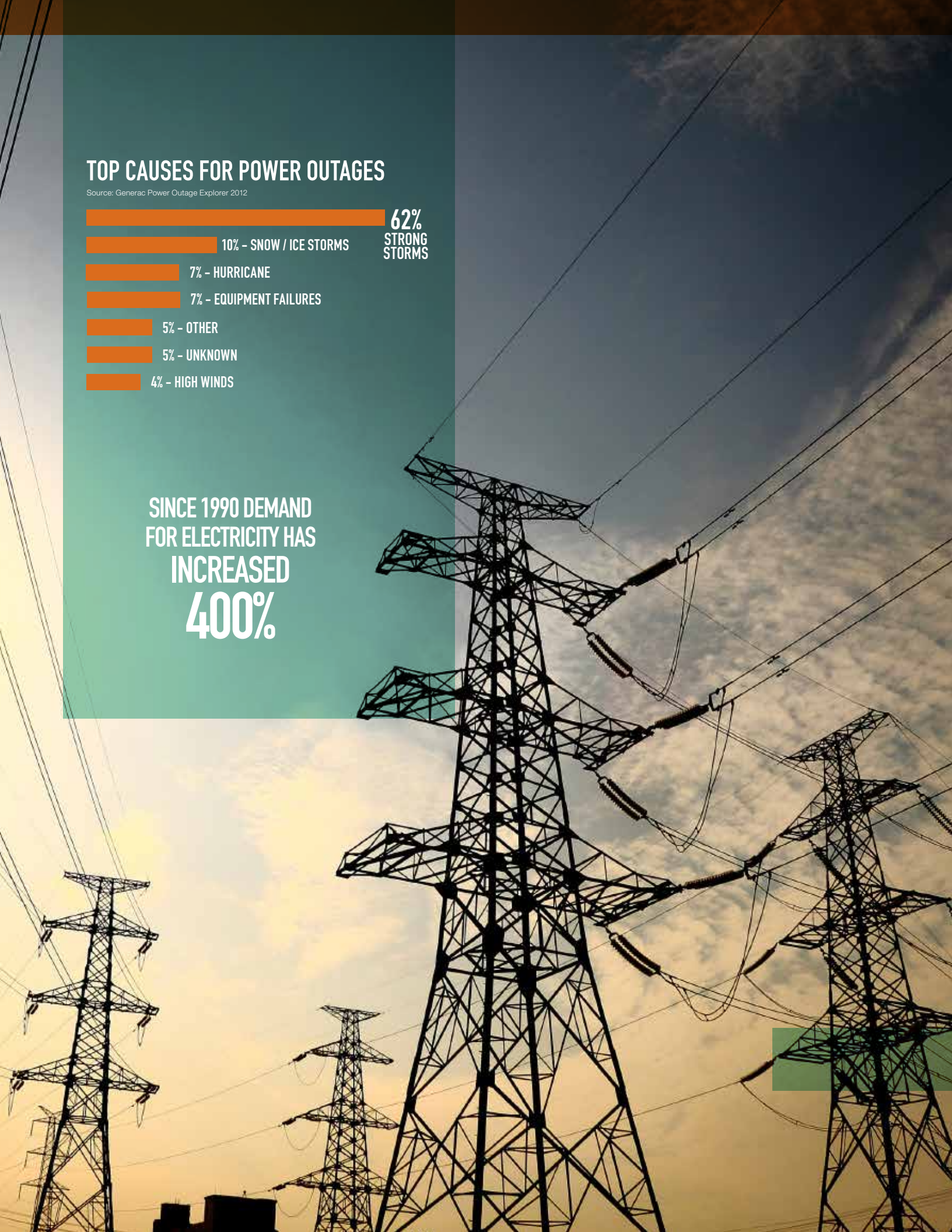
GENERAC[®]

TOP CAUSES FOR POWER OUTAGES

Source: Generac Power Outage Explorer 2012



SINCE 1990 DEMAND
FOR ELECTRICITY HAS
INCREASED
400%



Power. Our lives depend on it

From essentials like heating, cooling and lights, to daily necessities like cooking, laundry and the kid's bath-time, our lives run on electricity. Unfortunately, our modern lifestyles are in ever-greater jeopardy; power outages are occurring more frequently than ever and lasting longer, with devastating effects. Protect your home and family with a Generac automatic standby generator and keep life going without disruption.

The #1 choice in standby power

At Generac, we protect the things that power your life by providing quality, affordable power solutions. Since 1959, we've focused primarily on power generation, and we now offer more generator solutions than any other manufacturer. That heritage has helped make us the number one choice in residential standby power, chosen seven to one over the closest competition. When you choose Generac, you're choosing to have peace of mind and the power to live.

The broadest home standby generator product line means that you can have the exact amount of coverage you need—no compromising.

Generac's powerful OHVI® Engine is purpose-built for the rigors of generator use, for reliability that is second to none.

Automatic backup power means your home is always protected—even when you're away.

Options come in liquid propane or natural gas—the direct hookup means never dealing with cords or gas cans again.

7 OUT-OF 10 HOMEOWNERS CHOOSE GENERAC

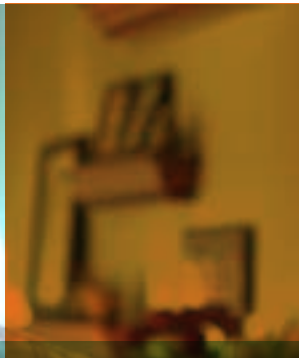
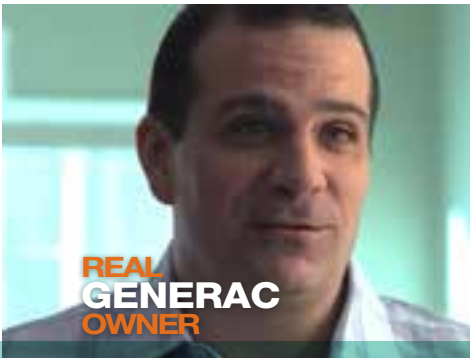
Source: Frost & Sullivan, SBI, TraQline



CONTROL YOUR POWER.
YOUR LIFE.™

**24-7
POWER
PROTECTION**





“IT’S ONE OF THE BEST INVESTMENTS I’VE EVER MADE IN THIS HOUSE.”
- David Panzarella

THE GENERAC PROMISE



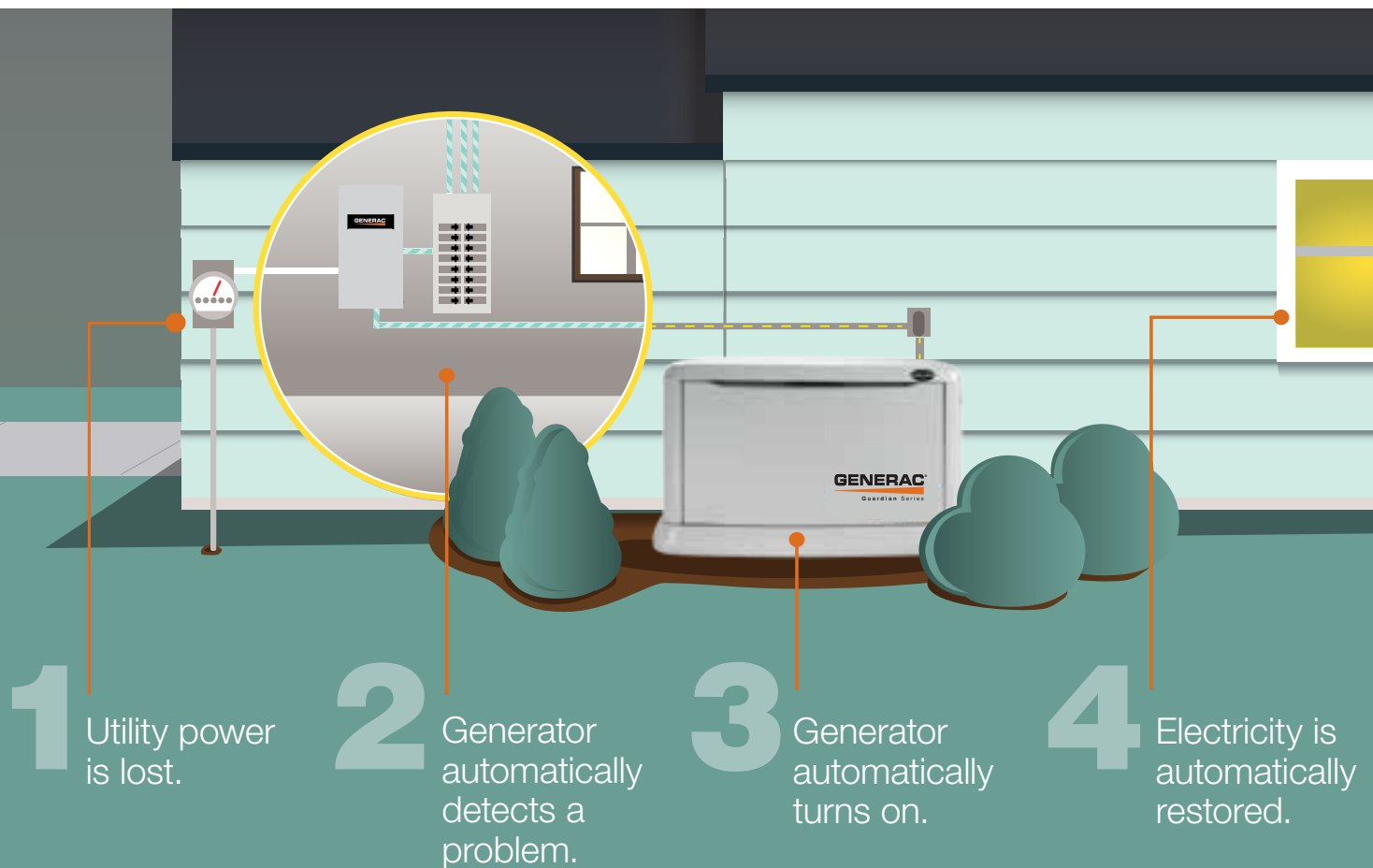
The Generac Promise means that we guarantee that our 8 – 20 kilowatt Guardian® Series home standby generators will give you peace of mind and the power to live. It means that we engineer and build them here in America. It means we stand behind them with a strong 5-year limited warranty. We promise to continue to innovate, like with our new Mobile Link™ cellular monitoring system, so you’ll know the status of your generator, no matter where you are. And if you ever need to call, we’re standing by 24/7, every minute of every day, ready to pick up the phone right here in Wisconsin.

Reliable. Dependable. We promise.



How a generator works

If your power goes out, your generator comes on – automatically. It's really that simple. The generator system consists of a generator and transfer switch. The generator sits outside of your home or business just like a central air conditioner, while the transfer switch is located next to the main breaker box, and in some cases replaces it entirely.



“MY FAMILY’S GOING TO BE SAFE AND SECURE
IN MY HOUSE BECAUSE OF THIS GENERATOR.”

- Greg Beappler

Sizing a generator is based on **your needs**

By sizing your generator according to your needs instead of your home’s square footage, you won’t overspend or be surprised by inadequate coverage. Generac has the solution; essential circuit coverage for the basics, managed whole-house for average coverage, and true whole-house coverage to protect it all.

How much power do you need?

With the broadest product line in the industry, Generac ensures the best possible backup power system for every homeowner, and one that is right for you.



Essential Circuit Coverage



Managed Whole-house



Complete Whole-house

Essential Circuit Coverage

ECONOMICAL SOLUTIONS COVER THE BASICS.

Many homeowners choose to cover only their essential circuits during an outage. Choose from options that create a simple, economical solution that keeps basics covered during an emergency.

Managed Whole-House

POWER MANAGEMENT GAINS MORE COVERAGE FROM A SMALLER GENERATOR.

Gain up to whole-house coverage through smart power management. If it is unlikely you will turn on every appliance at the same time (most people don’t), a smaller generator paired with a Generac power management switch provides whole-house coverage through a managed power solution by managing the power requirements of individual appliances.

Complete Whole-House

WHEN THE POWER GOES OUT, EVERYTHING COMES ON AND STAYS ON.

Generac’s full line of backup power solutions includes larger generators capable of covering every circuit in any size home for complete whole-house protection. Never wait for an appliance to take its turn being powered. When the power goes out, everything goes on and stays on — no matter how many circuits need to be backed up.



Generac offers a wide range of sizes

Consumers choose Generac automatic generators not only for their proven reliability, but for the innovative features, engineered with home and business owners in mind.

CorePower™ Series - 7 kW unit

The best value in residential standby power. The 7 kW CorePower system comes complete with a generator and a transfer switch, and is the most affordable packaged solution on the market. The compact design is engineered for easy maintenance and serviceability, and is ideal when space is at a premium.

- Immediate backup power supply with a continuous fuel source of either LP or natural gas
- Prepackaged with a 50 Amp, 8-circuit transfer switch – a complete automatic system at the same price as a portable generator
- Easy installation – the CorePower is lighter than comparable units, the compact footprint fits unobtrusively into landscaping, and the sides are removable for easy access



Guardian Series® – 8, 11, 14, 17, 20 kW units



Generac’s Guardian Series offers a wide range of solutions, so you can get the level of coverage that is appropriate to your needs. Choose from a pre-packaged system or have your dealer or contractor help design the best system for you.

- Powered by the Generac OHVI engine, designed specifically for generators
- Easily connects to existing LP or natural gas fuel supply; quickly converts in the field
- Composite mounting pad included, making installation easier in places where a concrete pad is not required
- Sturdy, enclosure with RhinoCoat™ finish for superior weather protection, modeled to withstand 150 mph winds and with a fire rating that allows for installations as close as 18" to the home
- TruePower™ technology provides clean, smooth operation of sensitive electronics and appliances
- Choose from a pre-wired switch for essential-circuit coverage, or our Smart Switch™ for managed whole-house coverage
- The only standby generator certified for natural gas operation at 3.5" of water column to accommodate low-pressure areas.



17 and 20 kW Guardian Series generators offer additional, premium features:

- Aluminum enclosure provides excellent protection in salt air coastal areas (optional on 17 kW)
- Quiet-Test™ weekly self-test mode runs at a lower rpm, is quieter, and consumes less fuel
- External GFCI outlet

EcoGen – 6 kW unit



Generac offers the only automatic standby generator engineered specifically for off-grid applications. The EcoGen eliminates the expense and unreliability previously associated with alternative energy backup power options, instead providing affordable, reliable, low emission, off-grid standby power.

- Engineered to easily integrate into the existing inverter and battery storage system
- Runs on environmentally friendly, energy-efficient propane gas, an alternative fuel that stores easily and indefinitely, and is freely available at many off-grid locations
- Features Generac’s own V-Twin OHVI® industrial engine, developed specifically for generator use. The low speed makes it the quietest in the industry, with noise and vibration levels drastically less than comparable solutions
- Unprecedented 500 hour maintenance intervals saves time and money



Tough. Reliable. Purpose-Built.

Generators are often required to run for hours, days or even weeks at a time. Continuous use can cause a lot of strain on engines not specifically engineered to withstand extended run times. We have developed robust engine solutions to ensure our generators provide the reliability necessary to power through even the most demanding situations.



Utility-Grade Power

True Power™ technology delivers best-in-class power quality with less than 5% total harmonic distortion for clean, smooth operation of sensitive electronics and appliances.



Tough, Durable Enclosures

Sturdy, all-weather enclosures made from either galvanized steel or corrosion-resistant aluminum modeled to withstand winds up to 150 mph, and with a fire rating, 3rd-party-certified to NFPA standards, that allows for installations as close as 18" to the home.



Install Virtually Anywhere

Certified for natural gas operation at 3.5" of water column to accommodate municipalities with low gas pressure.



Quiet Operation

Our patented Quiet-Test mode allows your generator to run weekly self-tests at a lower rpm, is quieter, and consumes less fuel. (17 kW & 20 kW only)



Remote Monitoring

Mobile Link™ compatible, for wireless remote monitoring of your generator via your computer, tablet or smartphone. (8-150 kW only)



“ I CAN RELY ON IT 150%. ”

- Dorothy McCann



The Generac OHVI® Engine

The heart of the Guardian Series 8-20 kW residential generators is the Generac OHVI engine, purpose-built for the rigors of power generation. The OHVI engine utilizes the same type of pressurized oil lubrication used to give automobile engines long and trouble-free lives. It also requires fewer scheduled maintenance checkups than some competitor's engines, and provides the reliability you need for the long run-times that emergency backup can require.



Smart, User-friendly Controls

Generac's Evolution™ Controller features a dual-line, multilingual LCD display in English, Spanish, French and Portuguese, allowing for easy monitoring of history and maintenance logs, as well as management of generator functions. Also features a built-in hour meter to monitor run times, provide information to determine maintenance intervals, and trigger reminders.



Intelligent and Affordable

DPM™ Technology intelligently manages household loads for a more affordable standby solution. *(Available only on 11 kW units and higher bundled with 200 Amp transfer switches).*



Tool-less Fuel Conversion

Tool-Less Fuel Conversion allows for easy switching between natural gas and LP fuels in the field without the need for tools.



5-Year Limited Warranty

We are proud of our innovative product design, high quality and first-class reliability so that is why we stand behind them with a strong 5-year limited warranty.



Convenient Installation

Certified for optimal placement 18" away from a building



When more power is needed

Then you need the Guardian and QuietSource® Series of generators. As the world's #1 manufacturer of home standby systems, Generac identified and responded to the need for affordable, higher kW units for larger residences and smaller businesses. Through innovative engineering, Generac has eliminated the noise, cost, and environmental issues that once made standby power impractical for these applications. When more power is necessary, install a quiet, clean and affordable solution from Generac.

Guardian Series – 25, 30, 45, 60 kW

The higher kW nodes of Generac's Guardian Series are ideal for larger homes and small businesses.

- The solid reliability of an automotive-style, liquid-cooled engine provides whole-house power protection for larger homes, and small-to-medium-size businesses such as convenience stores, restaurants and offices
- Continuous fuel choices in LP and natural gas offer cleaner-burning fuel solutions than traditional diesel engines
- The best liquid-cooled engine packs more power into a smaller footprint than competitive model
- Neutral styling, color and small footprint fits unobtrusively into landscaping
- Single phase



QuietSource Series – 22, 27, 36, 48 kW

Premium features are standard on the ultimate residential standby generator. For discerning homeowners with larger residences, these units are powered by a low-speed engine for extra-quiet operation and come standard with an aluminum enclosure. QuietSource generators also include all the features of the Guardian Series 25 – 60 kW

- Ideal for homes requiring higher kW backup for amenities such as additional living areas, garages and air conditioners, pools, greenhouses, guest houses, mother-in-law suites, medical needs, and more
- The low-speed, liquid-cooled engine is engineered to run at only 1800 RPM for a substantially quieter generator, consuming less fuel, and giving both the engine and the alternator a longer life
- Low-speed, liquid-cooled engine is engineered to run at only 1800 RPM, resulting in a generator that is substantially quieter and consumes less fuel, while giving both the engine and the alternator longer life



Need three-phase options or more than 60 kW ?

Ask your dealer about Generac's custom commercial generators.



“ MY BUSINESS ACTUALLY MAKES
MORE MONEY
DURING A POWER OUTAGE . . . I'M THE
ONLY PLACE OPEN! ”

- Steven Beck



Transfer switches

Because Generac understands the transfer switch is the core of the generator system, we offer more options than any other manufacturer to ensure coverage requirements are met. All switches are UL listed.

New Home Construction



GenReady™ Load Center

New home construction or renovations that require electrical upgrades are the ideal time to install Generac's GenReady Load Center. Because it's a hybrid electrical distribution panel with an internal transfer switch, you will enjoy substantial savings on installation and a simplified generator system.

The advanced engineering of the GenReady Load Center replaces the home's main circuit panel and incorporates the automatic transfer switch, in the form of the EZ Transfer Operator™, with the emergency panel. All power switching is handled within one unit, so it becomes a hybrid circuit panel capable of separating out only the electrical circuits chosen to be covered during a power outage.

- One circuit box replaces traditional two-and three-box setups, saving on installation costs and minimizing wall space requirements
- 40-circuit capacity with the use of tandem breakers
- Dimensions same as a standard 42-circuit main load center
- Compatible with generators rated up to 125 Amps/30 kW
- Both NEMA 1 and NEMA 3R enclosures available
- Accommodates Siemens, SquareD and GE 1" breakers



Essential-Circuit Coverage



Pre-wired Transfer Switch

Generac's pre-wired switch is the answer for homeowners who choose to backup selected circuits rather than an entire house. Pre-wired, they are the easiest installation on the market and offer the greatest value and the lowest installation cost in most cases.

- Available with 10, 12, 14, or 16 circuits
- 30 ft. pre-wired conduit for connecting the transfer switch to the external connection box
- 2 ft. pre-wired conduit for moving circuits from the main panel to the transfer switch
- Pre-wired external connection box with a weatherproof conduit for generator connections



Power Management - Whole House Coverage

Smart Switch™ Digital Power Management



Engineered with Generac's Digital Power Management (DPM) Technology, the Smart Switch has the ability to cycle two air conditioners on and off without adding additional components, allowing for a smaller generator to cover more circuits than when paired with a standard transfer switch.

- Cover more circuits with a smaller generator
- 100 – 800 Amp
- Service-rated and non-service-rated
- Add additional PMM modules & manage up to four more large loads
- NEMA 3R aluminum enclosure standard on 100 – 200 Amp switches
- Cover every circuit when paired with a higher kW generator



LTS Load Shed Switch

With a built-in 16-circuit load center, the LTS is the answer when more than six large loads need to be managed.

- 200 Amp, service-rated
- Aluminum NEMA 3R outdoor-rated enclosure



CSA models RTS-Y, J



CSA models RTS-Y, J



RTS-R models

Use service-rated Smart Switches™ (Y & J models) with service disconnect for quick & easy installations.
Use non-service-rated Smart Switches (R models) for custom installations or with installs that require a subpanel.

RTS Switches

With the RTS transfer switch, you can choose to cover every circuit all the time or only essential circuits depending upon the generator with which it is paired. RTS open-transition transfer switches are ideal for residential, commercial and light industrial applications. The only CSA-approved, service-rated transfer switches available in the industry. Can be installed outdoors in applications where there is no garage or basement.

Standard RTS transfer switches feature NEMA 3R enclosures for indoor or outdoor use.



- 100 – 800 Amp, 3Ø, non-service-rated
- Nema 3R rated rugged steel enclosures
- Designed to operate with the digital control on air-cooled generators and the Nexus and Evolution™ controllers used on liquid-cooled gaseous generators from 22 – 150 kW

Accessories

Generac offers more accessory options than any other generator manufacturer to ensure coverage requirements are met.



Mobile Link™ Remote Monitoring

Mobile Link™ is the affordable new cellular remote monitoring system that gives customers peace of mind, by allowing them to know the status of their generator anywhere, anytime, using their computer, tablet or smart phone through notifications and an interactive website.

Reliable. Affordable. Easy.

Mobile Link's cellular-based technology offers broad nationwide coverage and significant advantages over existing alternatives:

- Unlike competitive Ethernet solutions, which will not operate during a power outage, Mobile Link is powered by the generator's battery, eliminating the need for a costly UPS system.
- Installation and setup takes less than 15 minutes.
- Mobile Link is the lowest cost of any existing cellular monitoring solution.

Timely Notifications

StandbyStatus.com provides specific, accurate data on the status of your generator:

- Up to 40 different notifications, including successful exercise, maintenance reminders, change in status, low battery, and fault alert
- Select which notifications you wish to receive and when at up to 4 different email and 4 text message accounts
- Opt to send maintenance alerts to your authorized service/maintenance provider so they can proactively provide professional support

StandbyStatus.com

StandbyStatus.com features a user-friendly dashboard that allows customer to:

- View current generator status and upcoming maintenance needs
- Remotely set exercise schedule
- Review run and maintenance history
- Get local weather updates
- Change messaging settings

Log onto StandbyStatus.com to learn more.



“MY FAMILY'S GOING TO BE SAFE AND SECURE
IN MY HOUSE BECAUSE OF THIS GENERATOR.”

- Greg Beappler

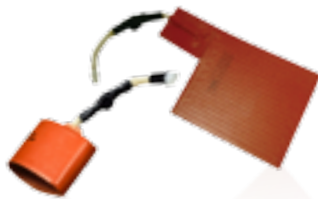


PMM™ (Power Management Module) and Starter Kit

Use Generac's Power Management Module (PMM) in conjunction with the Smart Switch™ to intelligently manage additional large loads and enable the efficient use of a smaller generator system. Just like the built-in load-shedding capabilities of the Smart Switch, after the load(s) are shed, the PMM module brings them back on individually to ensure generator power availability and eliminate potential system overload.*

- 50 Amp
- Up to four PMM Modules can be installed with each Smart Switch
- NEMA 3R enclosure allows for installation either at the electrical panel or anywhere between the panel and the appliance, indoors or out

* PMM Starter Kit included required transformer and the first PMM, required for PMM operation.



Cold Weather Kit

If the temperature regularly falls below 32° F, install a cold weather kit to maintain optimal battery and engine oil temperature. Kit contains a thermostat-controlled battery pad and engine-block warmer.

Scheduled Maintenance Kits

A scheduled maintenance program ensures the generator system is always in top operating condition and warranty requirements are being met. Generac's scheduled maintenance kits provide all the hardware necessary to perform complete routine maintenance on a Generac automatic standby generator. Oil must be purchased separately based upon manufacturer recommendations listed below. Maintenance is recommended at every 200 hours or 2 years.

Kit contents may vary by model. Kits Include:

- Air Filter
- Oil Filter
- Spark Plugs
- Oil Funnel
- Chamois
- Reminder Sticker



Extended Warranty

Up to five years extended warranty coverage available through Generac Industrial and Residential/Commercial Dealers.

For more accessories, visit Generac.com
or see the table on page 23.

Specifications

Enhance your Generac standby generator's performance with accessories from the leader in standby power. Products are available to maximize convenience and simplify maintenance for years of reliable standby power.

Automatic Standby Generators - Air-Cooled

| | EcoGen | | CorePower | | Guardian Series | | | |
|---|--------------------------------------|----------------|----------------|----------------|-----------------|----------------|----------------|----------------|
| Pre-packaged models | N/A | 5837 | 6237 | 6437 / 6438* | 6240 / 6241* | 6242 | 6243* | 6244* |
| Non pre-packaged models | 5818 | N/A | 6245 | 6439 | 6247 | 6248 | 6249 | 6250 |
| Rated Power (LPG/NG) | 6 kW* | 7/6 kW | 8/7 kW | 11/10 kW | 14/13 kW | 17/16 kW | 17/16 kW | 20/18 |
| Voltage (Single Phase) | 120V (240V capable w/kit 6016) | 240V | 240V | 240V | 240V | 240V | 240V | 240V |
| Amps @ 240V LPG | 50 (25 @ 240V) | 29.2 | 33.3 | 45.8 | 58.3 | 70.8 | 70.8 | 83.3 |
| Amps @ 240V NG | N/A | 25 | 29.2 | 41.7 | 58.3 | 66.6 | 66.6 | 75 |
| Engine/Alternator RPM | 2600 | 3600 / 3600 | 3600 / 3600 | 3600 / 3600 | 3600 / 3600 | 3600 / 3600 | 3600 / 3600 | 3600 / 3600 |
| Engine | OHVI / 530cc | 432cc Vertical | OHVI / 410cc | OHVI / 530cc | OHVI / 992cc | OHVI / 992cc | OHVI / 992cc | OHVI / 999cc |
| Fuel Consumption @ full load LPG cu. ft/hr (gal. hr) | 56.4 (155) | 46 (1.26) | 51.6 (1.42) | 70 (1.92) | 111.6 (3.07) | 130 (3.57) | 130 (3.57) | 140 (3.85) |
| Fuel Consumption @ Full Load NG cu. ft/hr (gal. hr) | N/A | 148 | 121 | 145 | 279 | 312 | 312 | 308 |
| Quiet-Test Mode | No | No | No | No | No | Yes | Yes | Yes |
| db(A) at Exercise | 52 | 67 | 62 | 63 | 66 | 60 | 60 | 60 |
| db(A) at Normal Operating Load | 52 | 67 | 62 | 63 | 66 | 66 | 66 | 66 |
| Automatic Transfer Switch | OHVI / 530cc | 50 Amp | 50 Amp | 50 / 200 Amp | 100 / 200 Amp | 100 Amp | 200 Amp | 200 Amp |
| Circuits Included | OHVI / 530cc | 8 | 10 | 12 | 14 | 16 | NA | NA |
| Enclosure | Steel | Composite | Steel | Steel | Steel | Steel | Aluminum | Aluminum |
| Enclosure Color | Bisque | Bisque | Bisque | Bisque | Bisque | Bisque | Gray | Gray |
| Warranty | 3 Year Limited | 2 Year Limited | 5 Year Limited | 5 Year Limited | 5 Year Limited | 5 Year Limited | 5 Year Limited | 5 Year Limited |
| Dimensions (L" x W" x H") | 48x25x29 | 24 x 30 x 33 | 48 x 25 x 29 | 48 x 25 x 29 | 48 x 25 x 29 | 48 x 25 x 29 | 48 x 25 x 29 | 48 x 25 x 29 |
| Generator Weight (lbs.) | 387 | 243 | 360 | 407 | 435 | 471 | 437 | 451 |
| CARB Compliant | NO | Yes | Yes | Yes | Yes | Yes | Yes | Yes |
| Transfer Switch Weight (lbs.) | N/A | 25 | 53.5 | 57 / 39 | 64 / 39 | 68 | 39 | 39 |

* Rating definitions - Standby: Applicable for supplying emergency power for the duration of the charging period. No overload capability is available for this rating. (All ratings in accordance with BS5514, ISO3046 and DIN6271). * Maximum wattage and current are subject to and limited by such factors as fuel Btu content, ambient temperature, altitude, engine power and condition, etc. Maximum power decreases about 3.5 percent for each 1,000 feet above sea level; and also will decrease about 1 percent for each 12° C (10° F) above 15.5° C (60° F). Not for sale in California.

Automatic Standby Generators - Guardian Series Liquid-Cooled

| Model Number | QT02515ANSX | QT03015ANSX | QT04524ANSX | QT04524ANSC | QT06024ANSX | QT06024AVSX |
|---|------------------|------------------|----------------|----------------|----------------|----------------|
| Rated Power (LPG/NG) | 25/25 kW | 30/30 kW | 45/45 kW | 45/45 kW | 60/60 kW | 60/60 kW |
| Voltage (Single Phase) | 240V | 240V | 240V | 240V | 240V | 240V |
| Amps @ 240V LPG | 104 | 125 | 188 | 188 | N/A | 250 |
| Amps @ 240V NG | 104 | 112.5 | 188 | 188 | 250 | N/A |
| Engine/Alternator RPM | 3600/3600 | 3600/3600 | 3600/3600 | 3600/3600 | 3600/3600 | 3600/3600 |
| Engine | In-line 4-Cyl. | In-line 4-Cyl. | In-line 4-Cyl. | In-line 4-Cyl. | In-line 4-Cyl. | In-line 4-Cyl. |
| Fuel Consumption @ full load - LPG cu. ft/hr (gal/hr) | 155 (4.3) | 187 (5.1) | 290 (8.0) | 290 (8.0) | N/A | 327 (9.0) |
| Fuel Consumption @ full load - NG cu. ft/hr | 390 | 470 | 730 | 730 | 862 | N/A |
| Quiet-Test Mode | Yes | Yes | Yes | Yes | Yes | Yes |
| db(A) at Exercise | 62 | 62 | 61 | 61 | 65 | 65 |
| db(A) at Normal Operating Load | 72 | 72 | 73 | 73 | 72 | 72 |
| Automatic Transfer Switch | Not Included | Not Included | Not Included | Not Included | Not Included | Not Included |
| Enclosure | Steel | Steel | Steel | Steel | Steel | Steel |
| Enclosure Color | Bisque | Bisque | Bisque | Bisque | Bisque | Bisque |
| Warranty | 2 Year Limited | 2 Year Limited | 2 Year Limited | 2 Year Limited | 2 Year Limited | 2 Year Limited |
| Dimensions (L" x W" x H") | 62.2 x 29 x 33.5 | 62.2 x 29 x 33.5 | 77 x 33.5 x 45 | 77 x 33.5 x 45 | 77 x 33.5 x 45 | 77 x 33.5 x 45 |
| Generator Weight (lbs.) | 875 | 935 | 1414 | 1414 | 1441 | 1441 |
| SCAQMD Model | • | • | | • | | |

Automatic Standby Generators - QuietSource Series Liquid-Cooled

| Model Number | QT02224ANAX | QT02724ANAX | QT03624ANAX | QT04842ANAX | QT04842ANAC |
|---|------------------|------------------|----------------|----------------|----------------|
| Rated Power (LPG/NG) | 22/22 kW | 27/25 kW | 36/35 kW | 48/48 kW | 48/48 kW |
| Voltage (Single Phase) | 240V | 240V | 240V | 240V | 240V |
| Amps @ 240V LPG | 92 | 112 | 150 | 200 | 200 |
| Amps @ 240V NG | 92 | 104 | 146 | 192 | 192 |
| Engine/Alternator RPM | 1800/1800 | 1800/1800 | 1800/1800 | 1800/1800 | 1800/1800 |
| Engine | In-line 4-Cyl. | In-line 4-Cyl. | In-line 4-Cyl. | V-6 | V-6 |
| Fuel Consumption @ full load - LPG cu. ft/hr (gal/hr) | 125 (3.4) | 143 (3.9) | 200 (5.5) | 260 (7.20) | 260 (7.20) |
| Fuel Consumption @ full load - NG cu. ft/hr | 316 | 359 | 503 | 655 | 655 |
| Quiet-Test Mode | Yes | Yes | Yes | Yes | Yes |
| db(A) at Exercise | 61 | 62 | 58 | 60 | 60 |
| db(A) at Normal Operating Load | 70 | 75 | 64 | 65 | 65 |
| Automatic Transfer Switch | Not Included | Not Included | Not Included | Not Included | Not Included |
| Enclosure | Aluminum | Aluminum | Aluminum | Aluminum | Aluminum |
| Enclosure Color | Grey | Grey | Grey | Grey | Grey |
| Warranty | 2 Year Limited | 2 Year Limited | 2 Year Limited | 2 Year Limited | 2 Year Limited |
| Dimensions (L" x W" x H") | 62.2 x 29 x 33.5 | 62.2 x 29 x 33.5 | 77 x 33.5 x 45 | 77 x 33.5 x 45 | 77 x 33.5 x 45 |
| Generator Weight (lbs.) | 843 | 891 | 1271 | 1360 | 1360 |
| SCAQMD Model | • | • | | | • |

*Units not designated as meeting South Coast Air Quality Management District (SCAQMD) emission requirements are not available for sale in CA or MA.

Transfer Switches

| Smart Switches | | | |
|----------------|--------------|--|----------|
| Amps | Model | 240V, 2-pole 1Ø / Description | Rating |
| 100 | RTSR100A3 | Power management transfer switch | UL / CUL |
| 100 | RTSY100A3 | Power management transfer switch with service disconnect | UL |
| 150 | RTSY150A3 | Power management transfer switch with service disconnect | UL |
| 200 | RTSR200A3 | Power management transfer switch | UL / CUL |
| 200 | RTSY200A3 | Power management transfer switch with service disconnect | UL |
| 300 | RTSY300A3 | Power management with service disconnect | UL |
| 400 | RTSR400A3 | Power management transfer switch | UL / CUL |
| 400 | RTSY400A3 | Power management transfer switch with service disconnect | UL |
| 600 | RTSR600A3 | Power management transfer switch | UL / CUL |
| 800 | RTSR800A3 | Power management transfer switch | UL / CUL |
| LTS Switch | | | |
| 200 | RTSJ200A3 | Power management transfer switch with service disconnect | UL |
| CSA Switches | | | |
| 100 | RTSE100A3CSA | CSA approved service-rated | CSA |
| 200 | RTSE200A3CSA | CSA approved service-rated | CSA |

| GenReady™ | | | |
|-----------|---|---|--------|
| Amps | Model | Description | Rating |
| 200 / 125 | 5448 GenReady | 200 Amp, 40 circuit combination electrical panel / transfer switch when the EZ Operator (5447) is added | UL |
| N/A | 5447 GenReady EZ Transfer Operator | EZ Operator install into 5448 to give automatic switch functionality | UL |
| 200 / 125 | 5449 GenReady w/ EZ Transfer Operator | 200 Amp, 40 circuit combination electrical panel and automatic transfer switch with the EZ Operator already installed | UL |
| 200 / 125 | 5454 GenReady w/ EZ Operator NEMA 3R | 200 Amp, 40 circuit combination electrical panel and automatic transfer switch with the EZ Operator already installed | UL |

Accessories

Remote Monitoring Options

| Model | Description |
|-------|---|
| 5928 | Wireless monitor: Basic |
| 5958 | Remote QT adapter (use with Model 5928) |
| 6463 | Mobile Link™ |
| 6478 | Mobile Link™ QT adapter (use with Model 6463) |

Load Management Options

| Model | Description | Contents |
|-------|---------------------------------------|--|
| 5621 | Auxiliary transfer switch contact kit | Contact, screws and washers |
| 6186 | Power Management Module (PMM) | 50 Amp contact NEMA 3R enclosure |
| 6199 | PMM Starter Kit | 24VAC transformer and one PMM (required for PMM use) |

Air-cooled Cold Weather Kit

| Model | Description | Contents |
|-------|--------------------------------|---|
| 5865 | 7kW CorePower air-cooled units | Battery pad warmer with internal thermostat & crank case heater |
| 6212 | 8 - 20 kW air-cooled units | Battery wrap with internal thermostat & crank case heater |

Liquid-cooled Cold Weather Kit

| Model | Description | Contents |
|-------|--------------------------------------|---|
| 6175 | 1.5L engines, 25 & 30 kW | 28" Battery warmer, zip ties and thermostat |
| 5630 | 2.4L engines, 22, 27, 36, 45 & 60 kW | 28" Battery warmer, zip ties and thermostat |
| 5632 | 5.4L engines, 48 kW | 44" Battery warmer, zip ties and thermostat |

Liquid-cooled Extreme Cold Weather Kit

| Model | Description | Contents | Use With |
|-------|-------------------------------------|---|----------|
| 6174 | 1.5L engines; 25, 30 kW | Block heater & associated mounting hardware | 6175 |
| 5616 | 2.4L engines; 22, 27, 36, 45, 60 kW | Block heater & associated mounting hardware | 5630 |
| 6204 | 5.4L engines; 48 kW | Block heater & associated mounting hardware | 5632 |

Air-cooled Scheduled Maintenance Kit

| Model | Description |
|-------|--|
| 6003 | CorePower, 7 kW, 432cc kit |
| 6004 | EcoGen 6 kW, 530cc kit |
| 6482 | 8 kW, 410cc kit |
| 6483 | 11 kW, 530cc kit |
| 6484 | 12,13, 14,15, 16 kW, 17 & 18 kW, 760/990cc kit |
| 6485 | 20 kW, 999cc kit |

Liquid-cooled Scheduled Maintenance Kit

| Model | Description |
|-------|--------------------------|
| 6176 | 1.5L engines; 25 & 30 kW |
| 5656 | 2.4L engines; 22 & 27 kW |
| 6205 | 5.4L engines; 48 kW |
| 5984 | 2.4L engines; 36 kW |
| 6172 | 2.4L engines; 45 kW |
| 6171 | 2.4L engines; 60 kW |

Miscellaneous

| Model | Description |
|-------|---|
| 5666 | Gray Fascia for air-cooled units (17 kW aluminum) |
| 5839 | Bisque Fascia for air-cooled units (8-17 kW) |
| 5819 | 26R Battery (7-20 kW) air-cooled only |
| 5651 | Base plug for all liquid-cooled models |
| 5654 | Gray paint kit for air-cooled units mfg after 4/08 |
| 5653 | Tan paint kit for air-cooled units mfg after 4/08 |
| 5703 | Bisque paint kit for air-cooled units mfg after 4/08 |
| 5704 | Medium gray paint kit for air-cooled units mfg after 4/08 |
| 5685 | Air-cooled generator transport cart |
| 6016 | EcoGen 240V Conversion Kit |

.....

For more information, such as
FAQ's, visit us online at
www.generac.com

.....

THE GENERAC
PROMISE



Generac Power Systems, Inc.
S45 W29290 Hwy. 59, Waukesha, WI 53189
1-888-GENERAC (1-888-436-3722)

0200680SBY 11/2013 ©2013 Generac Power Systems, Inc.
All rights reserved. Specifications are subject to change without notice.



generac.com