

Table of Contents

Page

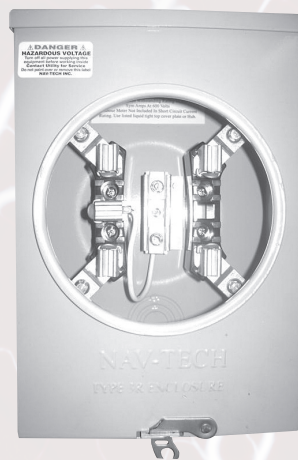
SERVICE EQUIPMENT	Con Edison Equipment	1
	Con Edison Trans-S Enclosures	2
	Con Edison Trans-S 400 AMP Drawing	3-4
	Con Edison Trans-S 800 AMP Drawing	5-6
	Con Edison MSIOP-208 Drawing	7
	Copper Detail CT Cabinets	8
	Con Edison Combination Trans-S Switch Cabinets	9
	Con Edison TS/SW 400 AMP 240V Line Top Drawing	10
	Con Edison TS/SW 400 AMP 240V Line Bottom Drawing	11
	Con Edison TS/SW 400 AMP 480V Line Top Drawing	12
	Con Edison TS/SW 400 AMP 480V Line Bottom Drawing	13
	Con Edison TS/SW 600 AMP 240V Line Bottom Drawing	14
	Con Edison TS/SW 600 AMP 240V Line Top Drawing	15
	Con Edison TS/SW 600 AMP 480V Line Top Drawing	16
	Con Edison TS/SW 600 AMP 480V Line Bottom Drawing	17
	Con Edison TS/SW 800 AMP 240V Line Top Drawing	18
	Con Edison TS/SW 800 AMP 240V Line Bottom Drawing	19
	Con Edison TS/SW 800 AMP 480V Line Top Drawing	20
	Con Edison TS/SW 800 AMP 480V Line Bottom Drawing	21
	LIPA Keyspan Equipment	22
	LIPA 400 Trans-S Cabinet Drawing	23
	LIPA 800 Trans-S Cabinet Drawing	24
LIPA Meter Socket MS10P MS7P Drawing	25	
Orange & Rockland Equipment	26	
Orange & Rockland 400 AMP Trans-S Drawing	27	
Orange & Rockland 800 AMP Trans-S Drawing	28	
Orange & Rockland Meter Socket MS10P MS7P Drawing	29	
PULL BOXES & WIREWAY	Screw Cover Boxes	30
	Screw Cover Wireways & Fittings	31
	Wireway Fittings	32
	Weatherproof Screw Cover Box / Raintight Screw Cover Boxes	33
	Hinge cover Boxes / Fire Alarm Box	34
	Raintight Trough / Weatherproof Trough	35
	Type 4X Enclosures Stainless Steel Type 304	36
	Covers Only	37
GANG BOXES & COVERS	Gang Boxes 1 5/8 - 2 1/2	38
	Raised Covers 1/2" - 3/4" - 1"	39
	Gang Box Collars	40
	Gang Box Flat Covers / Toggle Covers & Partitions	41
GROUNDING BUSBARS	Grounding Busbars	42
	Accessories	43
	Wireway Fill Table	44

CON EDISON EQUIPMENT



Con Ed Spec.	Navtech Cat. No	Size Description	Volts	Amps	List Price
205	N-205	10x10x5		100	\$64.00
205	RTN-205	10x10x5		100	128.00
215	N-215	24x12x8		200	128.00
215	RTN-215	24x12x8		200	296.00
484	N-484	30x18x12		400	250.00
484	RTN-484	30x18x12		400	468.00
220	N-220	12x12x8			300.00

CON EDISON APPROVED METER SOCKETS



Item	Description	List Price
MS1G-100	125 Amps 100 continuous single phase 5 JAW	\$50.00

CON EDISON TRANS-S ENCLOSURES



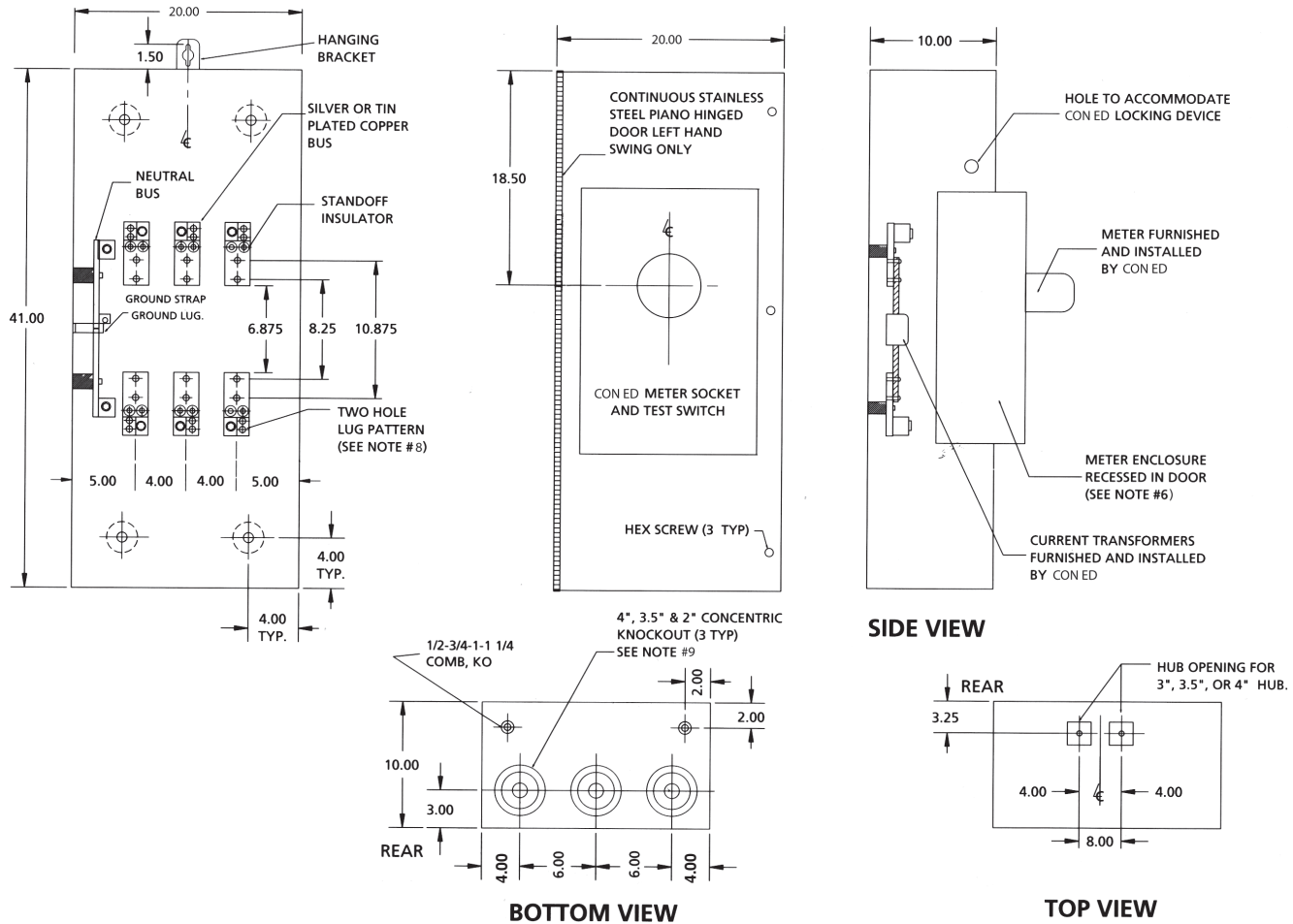
Con Ed Spec.	Navtech Cat. No	Size Description	Volts	Amps	List Price
745	TS-400-208	41x20x10	208	200-400 3PH	\$1,540.00
745	TS-400-240(1)	41x20x10	240	200-400 Single PH	1,710.00
745	TS-400-480	41x20x10	480	200-400 3PH	1,540.00
757	TS-800-208	48x24x10	208	400-800 3PH	1,900.00
750	TS-800-240(1)	48x24x10	240	600-800 Single PH	2,110.00
757	TS-800-480	48x24x10	480	400-800 3PH	2,200.00
751	MS-10P-208	21x14x5	208	30 AMP (CONT)	520.00
751	MS-10P-480	21x14x5	480	30 AMP (CONT)	620.00
	MS-7P-240	21x14x5	240	30 AMP (CONT)	590.00



**CON EDISON 400 AMP TRANS "S"
CURRENT TRANSFORMER CABINET (NEMA 3R)
200 AMP. & 400 AMP., 240 V & 480V AC RATED
CATALOG NUMBER TS-400-208, TS-400-480**



SERVICE EQUIPMENT



NOTES:

- CABINET SHALL BE RATED NEMA 3R AND SHALL BE CONSTRUCTED FROM CODE GAUGE GALVANIZED OR GALVANIZED STEEL
- BUS BAR SHALL BE SILVER OR TIN PLATED AND SHALL BE SIZED PER THE NEC.
- BUS BAR SHALL BE MOUNTED IN THE CABINET BY MEANS OF STANDOFF INSULATORS OR INSULATED MOUNTING BRACKETS. INSULATING MATERIALS SHALL CONFORM TO THE APPLICABLE SECTIONS OF UL 746 AND UL 94. CABINET SHALL BE UL APPROVED AND N.Y.C. ADVISORY BOARD.
- THE RIGHT HAND SIDE OF THE CABINET SHALL ALLOW FOR LINE AND LOAD CABLES TO ENTER AND EXIT THROUGH THE BOTTOM OF THE CABINET. THIS SPACE SHALL ALLOW FOR THE CABLES TO MEET THE MINIMUM BENDING RADIUS TO NEAREST PHASE OR NEUTRAL BUS AS PER THE NEC.
- THE SHORT CIRCUIT WITHSTAND CAPABILITY OF THE CABINET ASSEMBLY SHALL BE A MINIMUM OF 50,000 SYMMETRICAL AMPERES.
- CABINET DESIGN SHALL HAVE PROVISIONS FOR A SOLID DOOR TO ALLOW FOR THE METER ENCLOSURE TO BE MOUNTED REMOTELY FROM THE CABINET.
- METERING COMPARTMENT TO BE TOTALLY ISOLATED FROM C. T. COMPARTMENT. FOR "REMOTE" USE CAT. NO. (IOP - 208MS OR IOP -480MS) AND CONFORM TO MES #751.
- CABINET MAY BE DESIGNED WITH A SINGLE OR DOUBLE DOOR AS NECESSARY TO CONFORM WITH THE APPLICABLE STANDARDS. OVERALL DIMENSIONS SHALL BE KEPT TO A MINIMUM.
- HEX HEAD OR THUMB SCREWS MAY BE FURNISHED INSTEAD OF A THREE POINT LATCH.
- MANUFACTURER SHALL FURNISH AND INSTALL 1/2 - 13 STUDS WITH SPLIT LOCK WASHERS, RING WASHERS AND HEX NUTS FOR C. T. MOUNTING.
- USE ONLY MANUFACTURER'S APPROVED LUG PROVIDED. LUGS ARE RATED FOR (1) 600 MCM - #4 OR (2) 250 MCM - #4 CABLES.

- ONLY FACTORY PREFABRICATED KNOCKOUTS ON THE ENCLOSURE SHALL BE USED.
- PROVIDE #12 AWG STRANDED (19/25) THHN COPPER COLOR CODED WIRE FROM TEST SWITCH/METER SOCKET METERING COMPARTMENT INTO C. T. COMPARTMENT. LEAVE 5 FT. OF WIRE FOR FUTURE CONNECTION TO CURRENT TRANSFORMERS. ALL WIRING IN ACCORDANCE WITH CON EDISON MES #195, REV. 9.
- SECURITY HARDWARE TO BE PROVIDED FOR CT CABINET DOOR AND METER ENCLOSURE - TO BE INSTALLED BY CONTRACTOR.
- THIS STANDARD SHALL NOT BE USED AS A DESIGN CRITERIA. DIMENSIONS SHOWN ARE RECOMMENDED MINIMUMS ONLY. LARGER DIMENSIONS SHALL BE USED WHERE REQUIRED BY CODE.

INSTALLATION DETAILS:

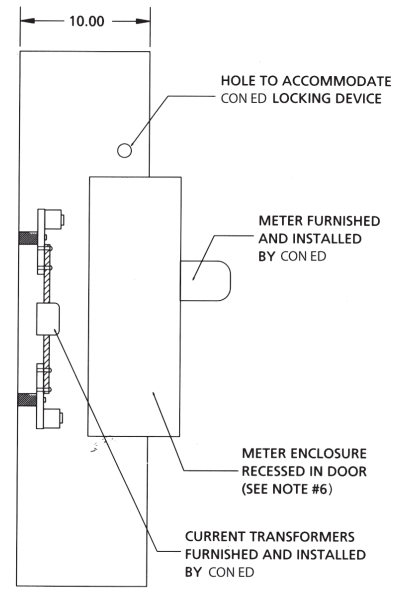
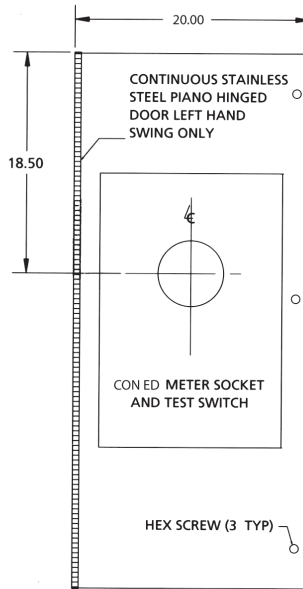
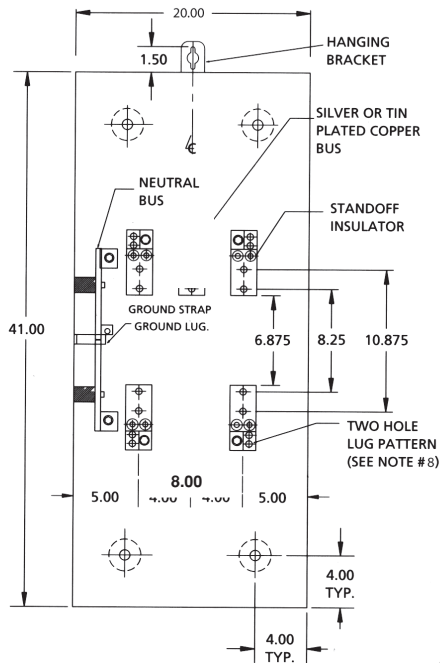
- MAXIMUM CABLE SIZES: 1 SET OF 500 KCMILS OR 2 SETS OF 4/0 AWG CU. LUG SIZE RANGES FROM 600 MCM - #4 OR (2) 250 KCMILS - 1/0 IF AL. CABLES ARE USED.
- USE ONLY MANUFACTURER'S APPROVED LUG PROVIDED.
- 1 FT. CLEARANCE REQUIRED ON THE LEFT (HINGED) SIDE OF THE CABINET TO A WALL OR OBSTRUCTION FOR METER CLEARANCE. MINIMUM OF 6" CLEARANCE ON THE RIGHT (NON HINGED) SIDE OF THE CABINET, NEEDED FOR INSTALLATION OF LOCKING DEVICES. SPACE BETWEEN ADJACENT CABINETS NO LESS THAN 6 INCHES. (SEE INSTALLATION DETAIL).
- 265/460 VOLT SERVICE REQUIRES A DISCONNECT SWITCH BEFORE THE CT CABINET.
- METER ENCLOSURES MOUNTED REMOTELY MUST CONFORM WITH MES 195 IN WIRE SIZING CONNECTIONS, COLOR CODING, ETC.
- FINAL CONNECTIONS PER MES 195 - FOR 4 WIRE INSTALLATIONS.



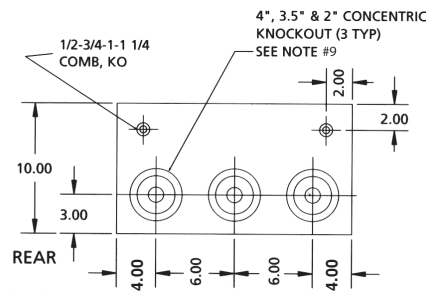
**CON EDISON 400 AMP TRANS "S"
CURRENT TRANSFORMER CABINET (NEMA 3R)
200 AMP. & 400 AMP., 240 V
CATALOG NUMBER TS-400-240(1)**



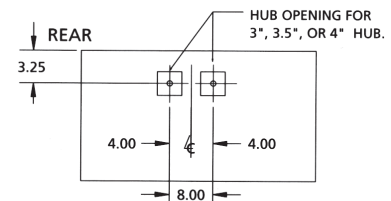
SERVICE EQUIPMENT



SIDE VIEW



BOTTOM VIEW



TOP VIEW

NOTES:

- CABINET SHALL BE RATED NEMA 3R AND SHALL BE CONSTRUCTED FROM CODE GAUGE GALVANIZED OR GALVANIZED STEEL
- BUS BAR SHALL BE SILVER OR TIN PLATED AND SHALL BE SIZED PER THE NEC.
- BUS BAR SHALL BE MOUNTED IN THE CABINET BY MEANS OF STANDOFF INSULATORS OR INSULATED MOUNTING BRACKETS. INSULATING MATERIALS SHALL CONFORM TO THE APPLICABLE SECTIONS OF UL 746 AND UL 94. CABINET SHALL BE UL APPROVED AND N.Y.C. ADVISORY BOARD.
- THE RIGHT HAND SIDE OF THE CABINET SHALL ALLOW FOR LINE AND LOAD CABLES TO ENTER AND EXIT THROUGH THE BOTTOM OF THE CABINET. THIS SPACE SHALL ALLOW FOR THE CABLES TO MEET THE MINIMUM BENDING RADIUS TO NEAREST PHASE OR NEUTRAL BUS AS PER THE NEC.
- THE SHORT CIRCUIT WITHSTAND CAPABILITY OF THE CABINET ASSEMBLY SHALL BE A MINIMUM OF 50,000 SYMMETRICAL AMPERES.
- CABINET DESIGN SHALL HAVE PROVISIONS FOR A SOLID DOOR TO ALLOW FOR THE METER ENCLOSURE TO BE MOUNTED REMOTELY FROM THE CABINET.
- METERING COMPARTMENT TO BE TOTALLY ISOLATED FROM C. T. COMPARTMENT. FOR "REMOTE" USE CAT. NO. (IOP - 208MS OR IOP -480MS) AND CONFORM TO MES #751.
- CABINET MAY BE DESIGNED WITH A SINGLE OR DOUBLE DOOR AS NECESSARY TO CONFORM WITH THE APPLICABLE STANDARDS. OVERALL DIMENSIONS SHALL BE KEPT TO A MINIMUM.
- HEX HEAD OR THUMB SCREWS MAY BE FURNISHED INSTEAD OF A THREE POINT LATCH.
- MANUFACTURER SHALL FURNISH AND INSTALL 1/2 - 13 STUDS WITH SPLIT LOCK WASHERS, RING WASHERS AND HEX NUTS FOR C. T. MOUNTING.
- USE ONLY MANUFACTURER'S APPROVED LUG PROVIDED. LUGS ARE RATED FOR (1) 600 MCM - #4 OR (2) 250 MCM - #4 CABLES.

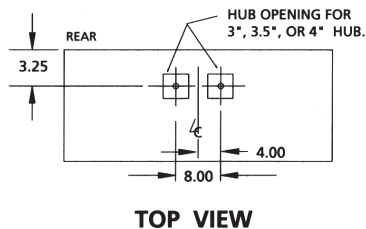
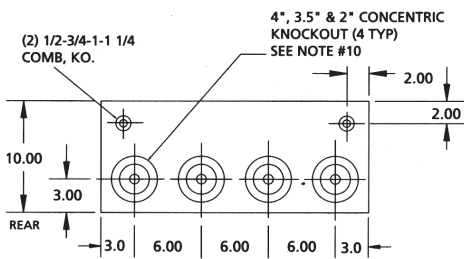
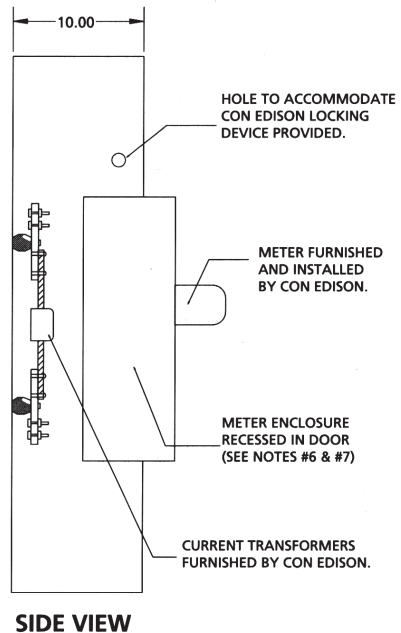
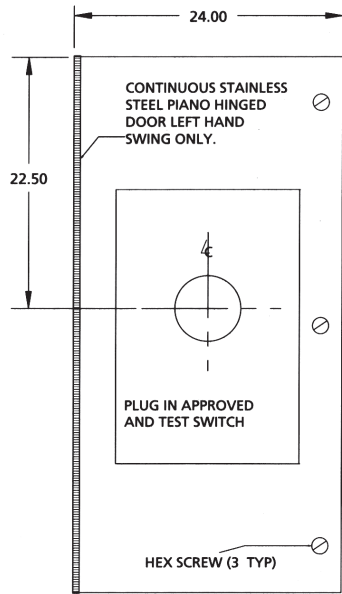
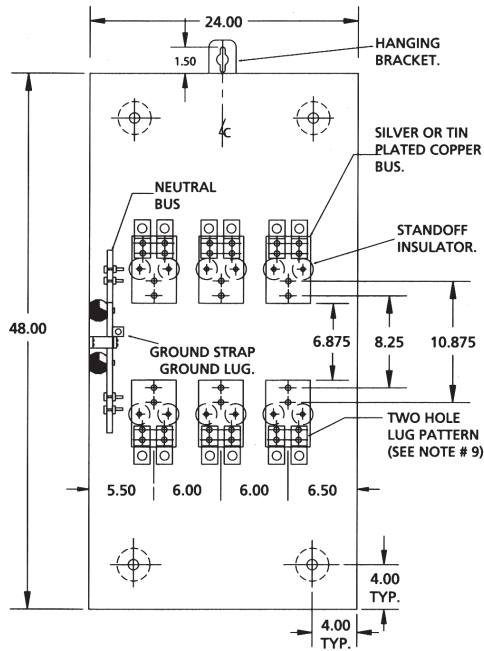
- ONLY FACTORY PREFABRICATED KNOCKOUTS ON THE ENCLOSURE SHALL BE USED.
- PROVIDE #12 AWG STRANDED (19/25) THHN COPPER COLOR CODED WIRE FROM TEST SWITCH/METER SOCKET METERING COMPARTMENT INTO C. T. COMPARTMENT. LEAVE 5 FT. OF WIRE FOR FUTURE CONNECTION TO CURRENT TRANSFORMERS. ALL WIRING IN ACCORDANCE WITH CON EDISON MES #195, REV. 9.
- SECURITY HARDWARE TO BE PROVIDED FOR CT CABINET DOOR AND METER ENCLOSURE - TO BE INSTALLED BY CONTRACTOR.
- THIS STANDARD SHALL NOT BE USED AS A DESIGN CRITERIA. DIMENSIONS SHOWN ARE RECOMMENDED MINIMUMS ONLY. LARGER DIMENSIONS SHALL BE USED WHERE REQUIRED BY CODE.

INSTALLATION DETAILS:

- MAXIMUM CABLE SIZES: 1 SET OF 500 KCMILS OR 2 SETS OF 4/0 AWG CU. LUG SIZE RANGES FROM 600 MCM - #4 OR (2) 250 KCMILS - 1/0 IF AL. CABLES ARE USED.
- USE ONLY MANUFACTURER'S APPROVED LUG PROVIDED.
- 1 FT. CLEARANCE REQUIRED ON THE LEFT (HINGED) SIDE OF THE CABINET TO A WALL OR OBSTRUCTION FOR METER CLEARANCE. MINIMUM OF 6" CLEARANCE ON THE RIGHT (NON HINGED) SIDE OF THE CABINET, NEEDED FOR INSTALLATION OF LOCKING DEVICES. SPACE BETWEEN ADJACENT CABINETS NO LESS THAN 6 INCHES. (SEE INSTALLATION DETAIL).
- 265/460 VOLT SERVICE REQUIRES A DISCONNECT SWITCH BEFORE THE CT CABINET.
- METER ENCLOSURES MOUNTED REMOTELY MUST CONFORM WITH MES 195 IN WIRE SIZING CONNECTIONS, COLOR CODING, ETC.
- FINAL CONNECTIONS PER MES 195 - FOR 4 WIRE INSTALLATIONS.



**CON EDISON 800 AMP TRANS "S"
CURRENT TRANSFORMER CABINET (NEMA 3R)
600 AMP. & 800 AMP., 240 V & 480V AC RATED
CATALOG NUMBER TS-800-208, TS-800-480**



BOTTOM VIEW

TOP VIEW

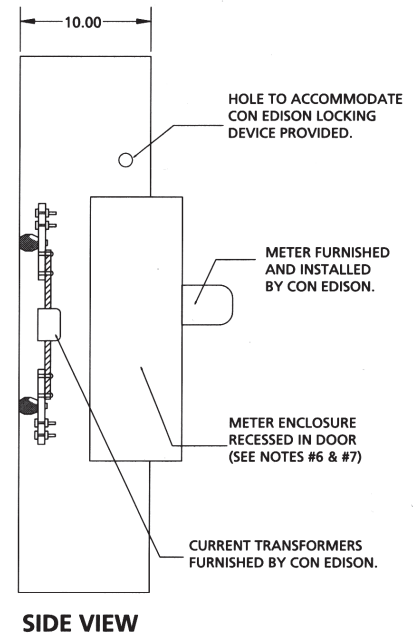
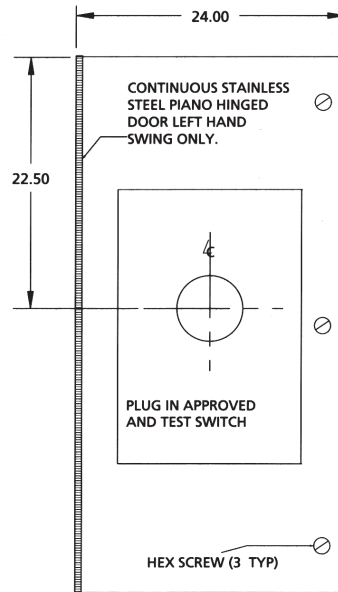
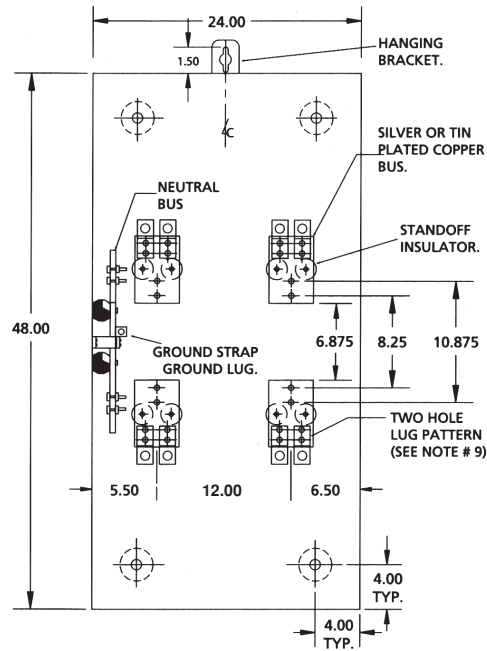
1. CABINET SHALL BE RATED NEMA 3R AND SHALL BE CONSTRUCTED FROM CODE GAUGE GALVANIZED OR GALVANNEALED STEEL.
2. BUS BAR SHALL BE SILVER OR TIN PLATED AND SHALL BE SIZED PER THE NEC.
3. BUS BAR SHALL BE MOUNTED IN THE CABINET BY MEANS OF STANDOFF INSULATORS OR INSULATED MOUNTING BRACKETS. INSULATING MATERIAL SHALL CONFORM TO THE APPLICABLE SECTIONS OF UL 746 AND UL 94. THE CABINET SHALL BE UL, CON EDISON AND N.Y.C. ADVISORY BOARD APPROVED.
4. THE RIGHT HAND SIDE OF THE CABINET SHALL ALLOW FOR LINE AND LOAD CABLES, TO ENTER AND EXIT THROUGH THE TOP OR THE BOTTOM OF THE CABINET. THIS SPACE SHALL ALLOW FOR THE CABLES TO MEET THE MINIMUM BENDING RADIUS TO NEAREST PHASE OR NEUTRAL BUS. AS PER THE NEC.
5. THE SHORT CIRCUIT WITHSTAND CAPABILITY OF THE CABINET ASSEMBLY SHALL BE RATED AT 50,000 RMS SYMMETRICAL AMPERES.
6. CABINET DESIGN SHALL HAVE PROVISIONS FOR A SOLID DOOR TO ALLOW FOR THE METER ENCLOSURE TO BE MOUNTED REMOTELY FROM THE CABINET.
7. METERING COMPARTMENT TO BE TOTALLY ISOLATED FROM CT COMPARTMENT FOR REMOTE USE. USE CAT. NO. RTS800-208 WITH MS10P-208 OR RTS800-480 WITH MS10P-480. ALL TO CONFORM TO MES # 195.
8. MANUFACTURER SHALL FURNISH AND INSTALL 1/2-13 STUDS WITH SPLIT LOCK WASHERS AND HEX NUTS FOR CT MOUNTING.
9. USE ONLY MANUFACTURER'S APPROVED LUG PROVIDED. (2) LUGS PER TERMINAL, EACH RATED FOR (1) 600 MCM-#4 OR (2) 250 MCM -#4 CABLES.
10. **ONLY FACTORY PREFABRICATED KNOCKOUTS ON THE ENCLOSURE SHALL BE USED**
11. PROVIDE PREWIRED TRANS "S" UNIT WITH #12 AWG STRANDED (19/25) THHN COPPER COLOR CODED WIRE FROM THE TEST SWITCH TO THE SOCKET ASSEMBLY AND FROM THE TEST SWITCH METERING COMPARTMENT INTO THE CT COMPARTMENT. LEAVE 7 FT. OF WIRE FOR FUTURE CONNECTION TO THE CURRENT TRANSFORMERS. USE EITHER HOOK OR RING TYPE TINNED COPPER LUGS FOR TERMINATIONS. ALL WIRING IN ACCORDANCE WITH CON EDISON MES #195, EXCEPT AS NOTED IN MES #751 FOR FORM 9S METER SOCKET.
12. SECURITY HARDWARE TO BE PROVIDED FOR CT CABINET DOOR AND METER ENCLOSURE COVER (TO BE INSTALLED BY CONTRACTOR).
13. 265/460 VOLT SERVICE REQUIRES A DISCONNECT SWITCH BEFORE THE CT CABINET.



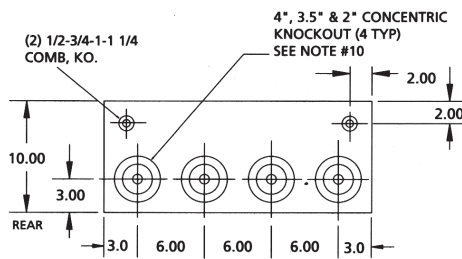
**CON EDISON 800 AMP TRANS "S"
CURRENT TRANSFORMER CABINET (NEMA 3R)
600 AMP. & 800 AMP., 240 V AC RATED
CATALOG NUMBER TS-800-240(1)**



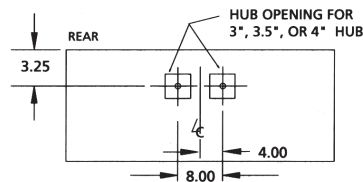
SERVICE EQUIPMENT



SIDE VIEW



BOTTOM VIEW



TOP VIEW

- CABINET SHALL BE RATED NEMA 3R AND SHALL BE CONSTRUCTED FROM CODE GAUGE GALVANIZED OR GALVANNEALED STEEL.
- BUS BAR SHALL BE SILVER OR TIN PLATED AND SHALL BE SIZED PER THE NEC.
- BUS BAR SHALL BE MOUNTED IN THE CABINET BY MEANS OF STANDOFF INSULATORS OR INSULATED MOUNTING BRACKETS. INSULATING MATERIAL SHALL CONFORM TO THE APPLICABLE SECTIONS OF UL 746 AND UL 94. THE CABINET SHALL BE UL, CON EDISON AND N.Y.C. ADVISORY BOARD APPROVED.
- THE RIGHT HAND SIDE OF THE CABINET SHALL ALLOW FOR LINE AND LOAD CABLES, TO ENTER AND EXIT THROUGH THE TOP OR THE BOTTOM OF THE CABINET. THIS SPACE SHALL ALLOW FOR THE CABLES TO MEET THE MINIMUM BENDING RADIUS TO NEAREST PHASE OR NEUTRAL BUS. AS PER THE NEC.
- THE SHORT CIRCUIT WITHSTAND CAPABILITY OF THE CABINET ASSEMBLY SHALL BE RATED AT 50,000 RMS SYMMETRICAL AMPERES.
- CABINET DESIGN SHALL HAVE PROVISIONS FOR A SOLID DOOR TO ALLOW FOR THE METER ENCLOSURE TO BE MOUNTED REMOTELY FROM THE CABINET.
- METERING COMPARTMENT TO BE TOTALLY ISOLATED FROM CT COMPARTMENT FOR REMOTE USE. USE CAT. NO. RTS800-208 WITH MS10P-208 OR RTS800-480 WITH MS10P-480. ALL TO CONFORM TO MES # 195.
- MANUFACTURER SHALL FURNISH AND INSTALL 1/2-13 STUDS WITH SPLIT LOCK WASHERS AND HEX NUTS FOR CT MOUNTING.
- USE ONLY MANUFACTURER'S APPROVED LUG PROVIDED. (2) LUGS PER TERMINAL, EACH RATED FOR (1) 600 MCM-#4 OR (2) 250 MCM -#4 CABLES.
- ONLY FACTORY PREFABRICATED KNOCKOUTS ON THE ENCLOSURE SHALL BE USED**
- PROVIDE PREWIRED TRANS "S" UNIT WITH #12 AWG STRANDED (19/25) THHN COPPER COLOR CODED WIRE FROM THE TEST SWITCH TO THE SOCKET ASSEMBLY AND FROM THE TEST SWITCH METERING COMPARTMENT INTO THE CT COMPARTMENT. LEAVE 7 FT. OF WIRE FOR FUTURE CONNECTION TO THE CURRENT TRANSFORMERS. USE EITHER HOOK OR RING TYPE TINNED COPPER LUGS FOR TERMINATIONS. ALL WIRING IN ACCORDANCE WITH CON EDISON MES #195, EXCEPT AS NOTED IN MES #751 FOR FORM 9S METER SOCKET.
- SECURITY HARDWARE TO BE PROVIDED FOR CT CABINET DOOR AND METER ENCLOSURE COVER (TO BE INSTALLED BY CONTRACTOR).
- 265/460 VOLT SERVICE REQUIRES A DISCONNECT SWITCH BEFORE THE CT CABINET.

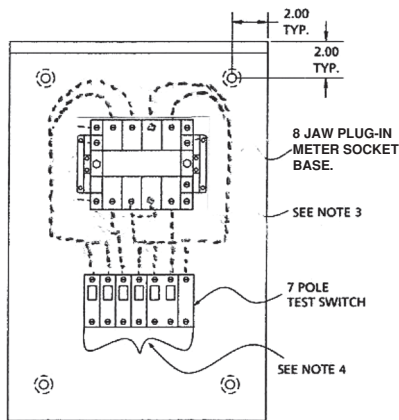


CON EDISON "S" PLUG-IN METER SOCKET AND TEST SWITCH
30 AMP. CONT., 208V 240V & 480V AC RATED (NEMA 3R)



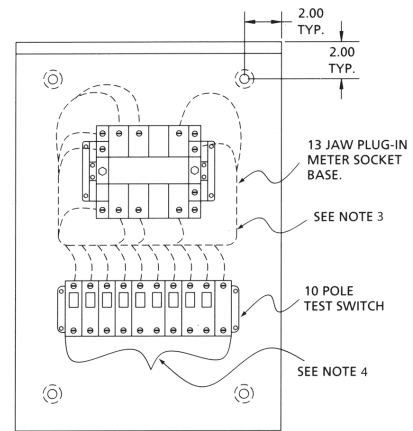
SERVICE EQUIPMENT

SINGLE PHASE

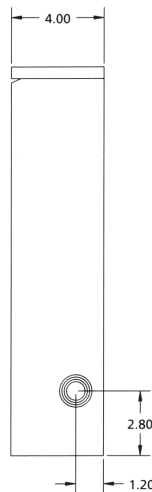


**FRONT VIEW NO COVER
MS7P-240**

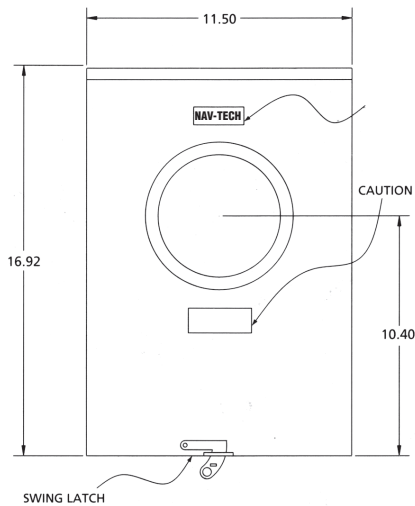
THREE PHASE



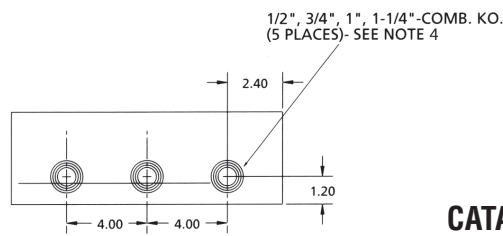
**FRONT VIEW NO COVER
MS10P-208**



SIDE VIEW

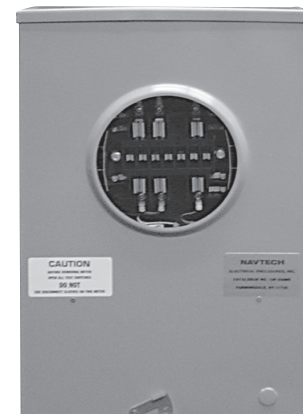


TYPICAL FRONT VIEW



TYPICAL BOTTOM VIEW

CATALOG NUMBERS
MS10P-208
MS10P-480
MS7P-240



1. CABINET SHALL BE RATED NEMA 3R AND SHALL BE CONSTRUCTED FROM CODE GAUGE GALVANIZED OR GALVANNEALED STEEL.
2. **ONLY FACTORY PREFABRICATED KNOCKOUTS ON THE ENCLOSURE SHALL BE USED.**
3. STANDARD FOR 1 PHASE 3 WIRE FORM METER SOCKET, AND STANDARD 195 CON ED FOR 3 PHASE 4 WIRE WYE FORM 9S METER SOCKET, IS PROVIDED PREWIRED FROM TEST SWITCH TO METER BASE IN ACCORD WITH CON ED CONSTRUCTION.
4. WIRE PROVIDED AND INSTALLED BY CONTRACTOR.



CON EDISON COPPER DETAIL BOXES/ CURRENT TRANSFORMER CABINETS



Con Ed Spec.	Navtech Cat. No	AMPS	Size	List Price
EO-9525-B	9525	800	48x24x18	\$2,200.00
EO-9525-B	9525	1200	54x24x18	2,400.00
EO-9072-B	9072	1600	68x26x18	2,600.00
EO-9073-B	9073	2400	78x34x18	2,800.00
EO-9073-B	9073	3000	84x40x30	6,000.00
EO-9073-B	9073	4000	92x48x30	8,000.00
142	CT-36	400	27x36x10	750.00
142	CT-44	400	27x44x10	930.00
298	298CT	800	72x32x12	2,970.00
298	298CT	1200	72x32x12	2,970.00
298	298CT	1600A	72x32x12	3,800.00
377	377CT	As Required	As Required	CALL

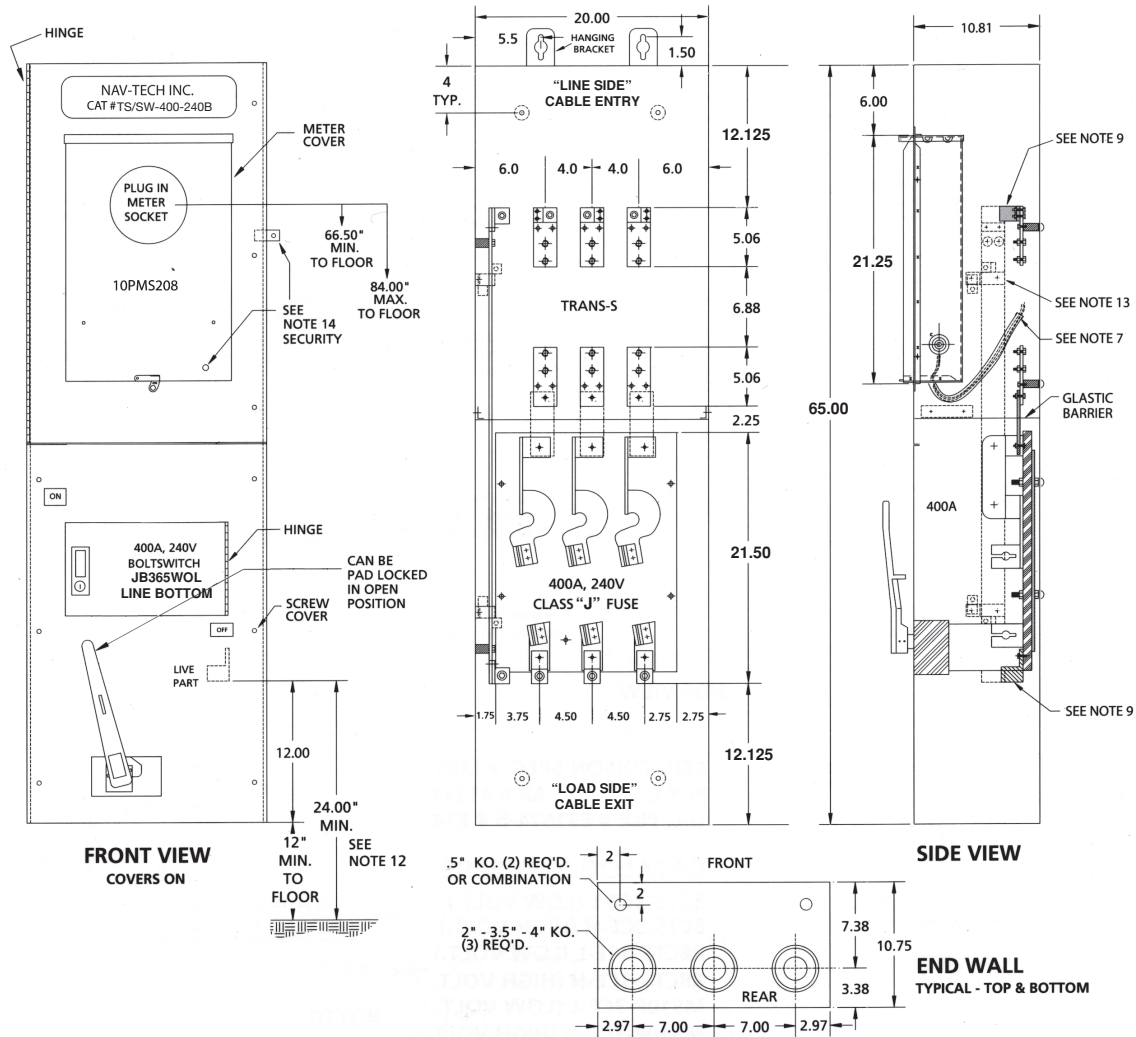


CON EDISON TRANS-S/SWITCH COMBINATION UNITS



Con Ed Spec.	Navtech Cat. No	Size Description	Volts	Amps	List Price
745	TS/SW 400-240-B	70x20x11	240	400	\$4,640.00
745	TS/SW 400-240-T	65x20x11	240	400	4,410.00
745	TS/SW 400-480-B	65x20x11	480	400	4,980.00
745	TS/SW 400-480-T	70x20x11	480	400	4,760.00
	TS/SW 600-240-B	82x24x12	240	600	6,400.00
	TS/SW 600-240-T	76x20x12	240	600	6,290.00
	TS/SW 600-480-B	76x20x12	480	600	6,400.00
	TS/SW 600-480-T	82x24x12	480	600	6,490.00
750	TS/SW 800-240-B	82x24x12	240	800	7,000.00
750	TS/SW 800-240-T	76x20x12	240	800	6,650.00
750	TS/SW 800-480-B	76x20x12	480	800	7,430.00
750	TS/SW 800-480-T	82x24x12	480	800	7,090.00

**TRANS "S" AND SWITCH COMBINATION
400 AMP., 240 VOLT CON EDISON - LINE TOP
CATALOG NUMBERS: TS/SW-400-240T**



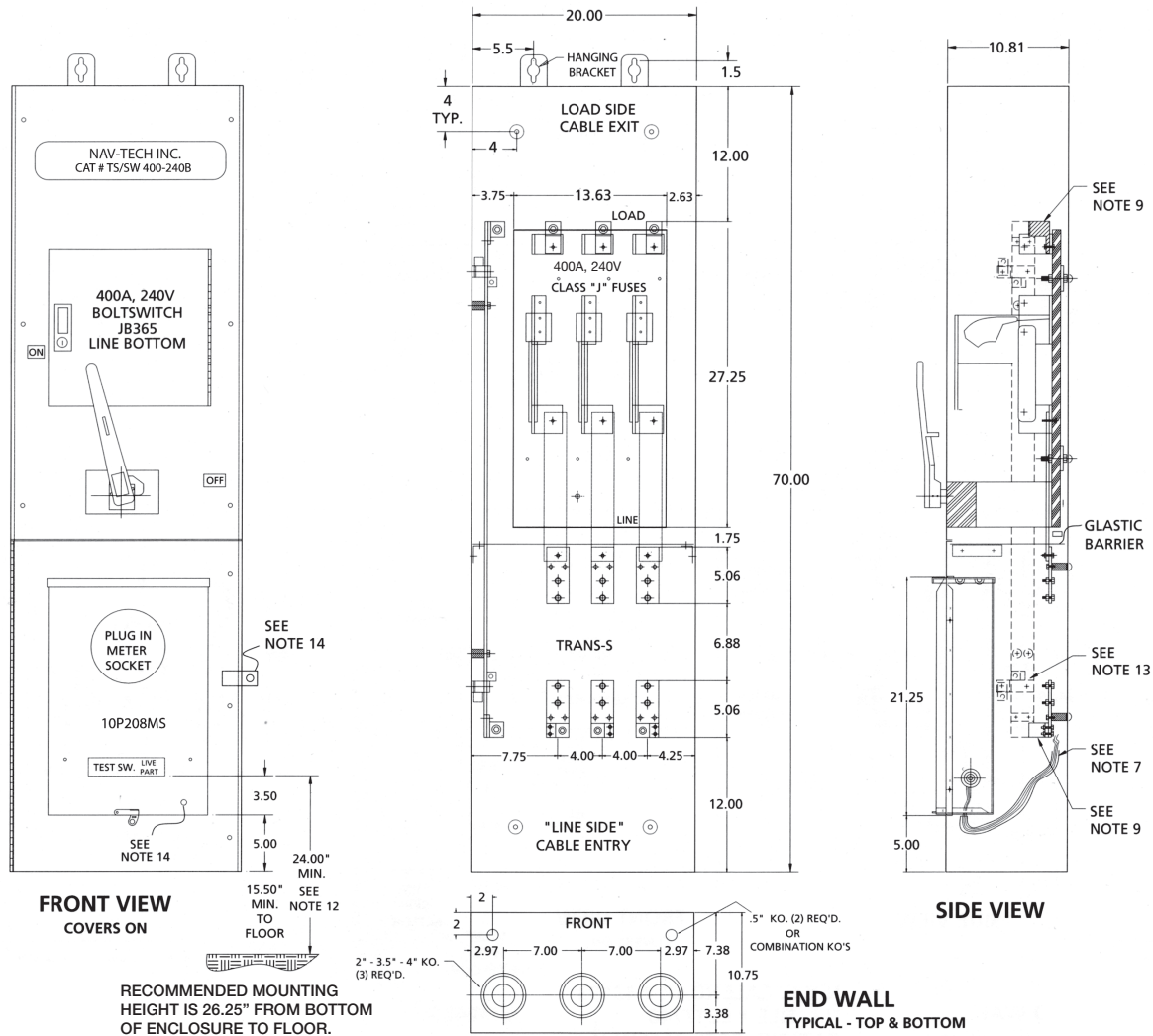
- CABINET SHALL BE RATED NEMA I (INDOOR ONLY) AND SHALL BE CONSTRUCTED FROM CODE GAUGE GALVANIZED OR GALVANEALD STEEL.
- BUS BAR SHALL BE SILVER OR TIN PLATED AND SHALL BE SIZED PER THE NEC.
- BUS BAR SHALL BE MOUNTED IN THE CABINET BY MEANS OF STANDOFF INSULATORS OR INSULATED MOUNTING BRACKETS. INSULATING MATERIALS SHALL CONFORM TO THE APPLICABLE SECTIONS OF UL 746 AND UL 94. CABINET SHALL BE UL, CON EDISON AND N.Y.C. ADVISORY BOARD APPROVED.
- THE CABINET IS INTENDED FOR CABLE ENTRY THROUGH BOTTOM AND EXIT THROUGH THE TOP ONLY..
- THE SHORT CIRCUIT CAPABILITY OF THE CABINET ASSEMBLY SHALL BE RATED AT 200,000 RMS SYMMETRICAL AMPERES WITH CLASS "J" FUSES.
- THE FUSED POWER CIRCUIT DEVICE REQUIRES 400AMP, 480V MAX., CLASS "J" FUSES (NOT PROVIDED).
- INSULATED SLEEVING SHALL BE PROVIDED WHERE MULTICONDUCTOR BUNDLE PASSES UNDER NEUTRAL BAR. WIRE MOUNTS ARE RIVETED IN PLACE.
- THE UNIT IS MARKED "SUITABLE FOR USE AS SERVICE EQUIPMENT"..
- USE ONLY MANUFACTURER'S APPROVED LUG PROVIDED. EACH LUG IS RATED FOR (1) 600 MCM-#4 OR (2) 250MCM-#4 CABLE.
- ONLY FACTORY PREFABRICATED KNOCKOUTS ON THE ENCLOSURE SHALL BE USED.**
- PROVIDE PREWIRED TRANS "S" UNIT WITH #12 AWG STRANDED (19/25) THHN COPPER COLOR CODED WIRE FROM THE TEST SWITCH TO THE SOCKET ASSEMBLY AND FROM THE TEST SWITCH TO THE METERING COMPARTMENT INTO C.T. COMPARTMENT. LEAVE 7 FT. OF WIRE FOR FUTURE CONNECTION TO CURRENT TRANSFORMERS. USE EITHER HOOK OR RING TYPE TINNED COPPER LUGS FOR TERMINATIONS. ALL WIRING IN ACCORDANCE WITH CON EDISON MES #751, FOR FORM 9S METER SOCKET.
- NEAREST LIVE PARTS ARE 24" MINIMUM TO FLOOR.
- THE UNIT IS SHIPPED WITH AN "INSULATED NEUTRAL" AND A BOUNDING KIT ("BK8") PROVIDED WITH INSTRUCTIONS (FOR INSTALLATION AS REQUIRED BY CONTRACTOR).
- SECURITY HARDWARE TO BE PROVIDED FOR CT CABINET DOOR AND METER ENCLOSURE (TO BE INSTALLED BY CONTRACTOR).
- 265/460 VOLT SERVICE REQUIRES A DISCONNECT SWITCH BEFORE THE CT CABINET.



**TRANS "S" AND SWITCH COMBINATION
400 AMP., 240 VOLT CON EDISON - LINE BOTTOM
CATALOG NUMBER TS/SW-400-240B**



SERVICE EQUIPMENT



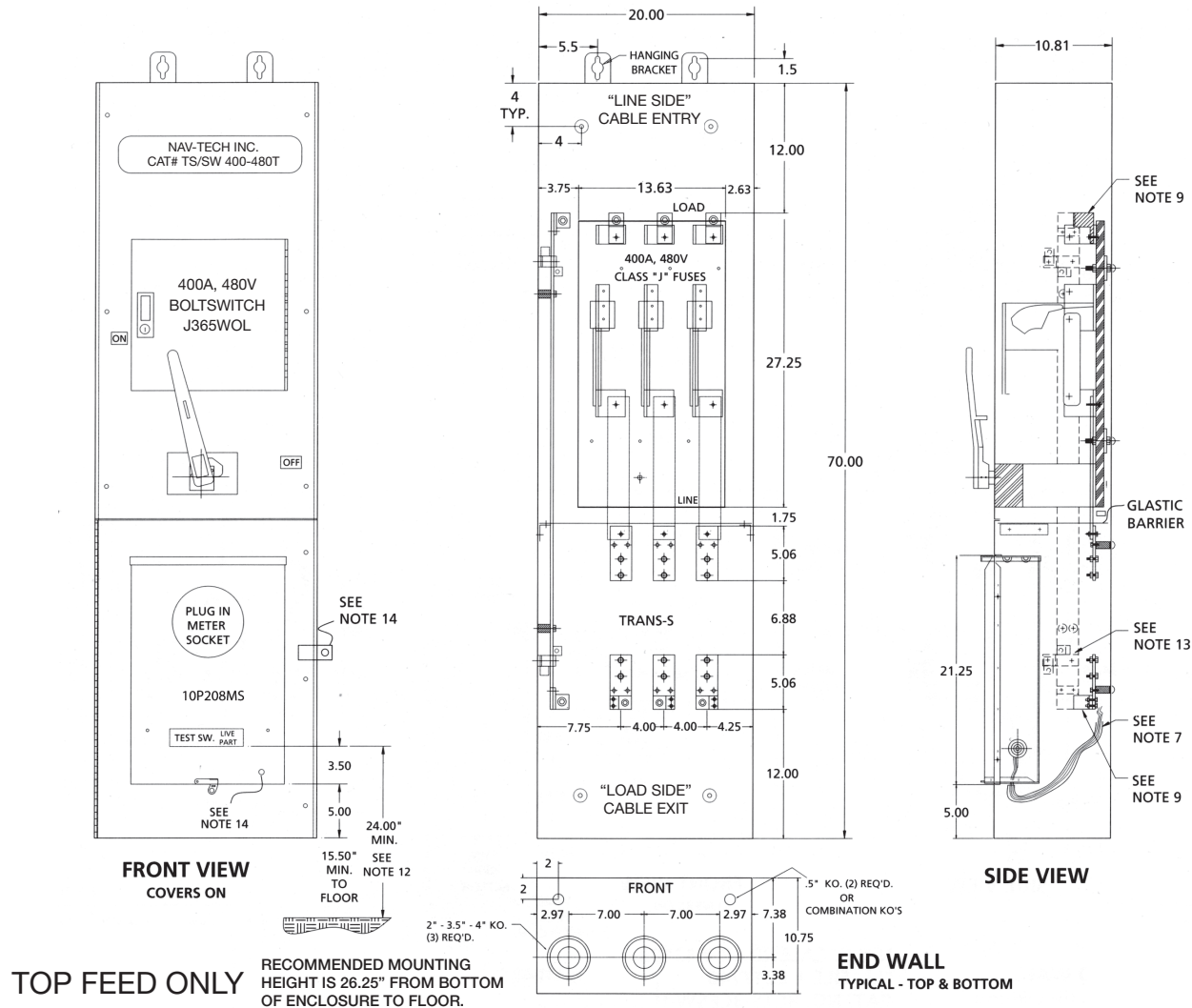
- CABINET SHALL BE RATED NEMA 1 (INDOOR ONLY) AND SHALL BE CONSTRUCTED FROM CODE GAUGE GALVANIZED OR GALVANEALD STEEL.
- BUS BAR SHALL BE SILVER OR TIN PLATED AND SHALL BE SIZED PER THE NEC.
- BUS BAR SHALL BE MOUNTED IN THE CABINET BY MEANS OF STANDOFF INSULATORS OR INSULATED MOUNTING BRACKETS. INSULATING MATERIALS SHALL CONFORM TO THE APPLICABLE SECTIONS OF UL 746 AND UL 94. CABINET SHALL BE UL, CON EDISON AND N.Y.C. ADVISORY BOARD APPROVED.
- THE CABINET IS INTENDED FOR CABLE ENTRY THROUGH BOTTOM AND EXIT THROUGH THE TOP ONLY..
- THE SHORT CIRCUIT CAPABILITY OF THE CABINET ASSEMBLY SHALL BE RATED AT 200,000 RMS SYMMETRICAL AMPERES WITH CLASS "J" FUSES.
- THE FUSED POWER CIRCUIT DEVICE REQUIRES 400AMP, 250V MAX., CLASS "J" FUSES (NOT PROVIDED).
- INSULATED SLEEVING SHALL BE PROVIDED WHERE MULTICONDUCTOR BUNDLE PASSES UNDER NEUTRAL BAR. WIRE MOUNTS ARE RIVETED IN PLACE.
- THE UNIT IS MARKED "SUITABLE FOR USE AS SERVICE EQUIPMENT"..
- USE ONLY MANUFACTURER'S APPROVED LUG PROVIDED. EACH LUG IS RATED FOR (1) 600 MCM-#4 OR (2) 250MCM-#4 CABLE.
- ONLY FACTORY PREFABRICATED KNOCKOUTS ON THE ENCLOSURE SHALL BE USED.**
- PROVIDE PREWIRED TRANS "S" UNIT WITH #12 AWG STRANDED (19/25) THHN COPPER COLOR CODED WIRE FROM THE TEST SWITCH TO THE SOCKET ASSEMBLY AND FROM THE TEST SWITCH TO THE METERING COMPARTMENT INTO C.T. COMPARTMENT. LEAVE 7 FT. OF WIRE FOR FUTURE CONNECTION TO CURRENT TRANSFORMERS. USE EITHER HOOK OR RING TYPE TINNED COPPER LUGS FOR TERMINATIONS. ALL WIRING IN ACCORDANCE WITH CON EDISON MES #751, FOR FORM 9S METER SOCKET.
- NEAREST LIVE PARTS ARE 24" MINIMUM TO FLOOR.
- THE UNIT IS SHIPPED WITH AN "INSULATED NEUTRAL" AND A BOUNDING KIT ("BK8") PROVIDED WITH INSTRUCTIONS (FOR INSTALLATION AS REQUIRED BY CONTRACTOR).
- SECURITY HARDWARE TO BE PROVIDED FOR CT CABINET DOOR AND METER ENCLOSURE (TO BE INSTALLED BY CONTRACTOR).
- 265/460 VOLT SERVICE REQUIRES A DISCONNECT SWITCH BEFORE THE CT CABINET.



**TRANS "S" AND SWITCH COMBINATION
400 AMP., 480 VOLT CON EDISON - LINE TOP
CATALOG NUMBER TS/SW-400-480T**



SERVICE EQUIPMENT



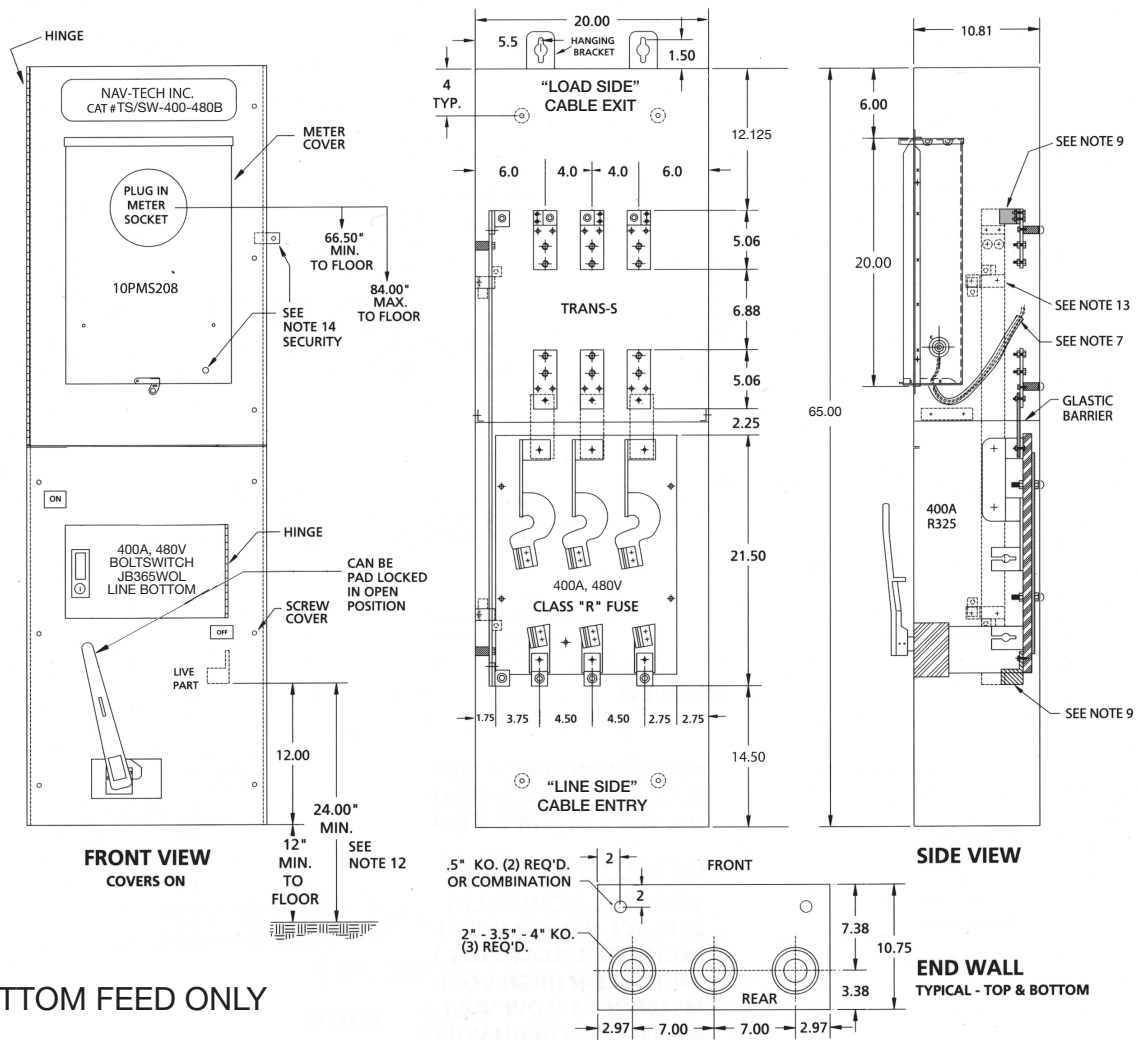
- CABINET SHALL BE RATED NEMA 1 (INDOOR ONLY) AND SHALL BE CONSTRUCTED FROM CODE GAUGE GALVANIZED OR GALVANEALD STEEL.
- BUS BAR SHALL BE SILVER OR TIN PLATED AND SHALL BE SIZED PER THE NEC.
- BUS BAR SHALL BE MOUNTED IN THE CABINET BY MEANS OF STANDOFF INSULATORS OR INSULATED MOUNTING BRACKETS. INSULATING MATERIALS SHALL CONFORM TO THE APPLICABLE SECTIONS OF UL 746 AND UL 94. CABINET SHALL BE UL, CON EDISON AND N.Y.C. ADVISORY BOARD APPROVED.
- THE CABINET IS INTENDED FOR CABLE ENTRY THROUGH BOTTOM AND EXIT THROUGH THE TOP ONLY..
- THE SHORT CIRCUIT CAPABILITY OF THE CABINET ASSEMBLY SHALL BE RATED AT 200,000 RMS SYMMETRICAL AMPERES WITH CLASS "J" FUSES.
- THE FUSED POWER CIRCUIT DEVICE REQUIRES 400AMP, 480V MAX., CLASS "J" FUSES (NOT PROVIDED).
- INSULATED SLEEVING SHALL BE PROVIDED WHERE MULTICONDUCTOR BUNDLE PASSES UNDER NEUTRAL BAR. WIRE MOUNTS ARE RIVETED IN PLACE.
- THE UNIT IS MARKED "SUITABLE FOR USE AS SERVICE EQUIPMENT"..
- USE ONLY MANUFACTURER'S APPROVED LUG PROVIDED. EACH LUG IS RATED FOR (1) 600 MCM-#4 OR (2) 250MCM-#4 CABLE.
- ONLY FACTORY PREFABRICATED KNOCKOUTS ON THE ENCLOSURE SHALL BE USED.**
- PROVIDE PREWIRED TRANS "S" UNIT WITH #12 AWG STRANDED (19/25) THHN COPPER COLOR CODED WIRE FROM THE TEST SWITCH TO THE SOCKET ASSEMBLY AND FROM THE TEST SWITCH TO THE METERING COMPARTMENT INTO C.T. COMPARTMENT. LEAVE 7 FT. OF WIRE FOR FUTURE CONNECTION TO CURRENT TRANSFORMERS. USE EITHER HOOK OR RING TYPE TINNED COPPER LUGS FOR TERMINATIONS. ALL WIRING IN ACCORDANCE WITH CON EDISON MES #751, FOR FORM 9S METER SOCKET.
- NEAREST LIVE PARTS ARE 24" MINIMUM TO FLOOR.
- THE UNIT IS SHIPPED WITH AN "INSULATED NEUTRAL" AND A BOUNDING KIT ("BK8") PROVIDED WITH INSTRUCTIONS (FOR INSTALLATION AS REQUIRED BY CONTRACTOR).
- SECURITY HARDWARE TO BE PROVIDED FOR CT CABINET DOOR AND METER ENCLOSURE (TO BE INSTALLED BY CONTRACTOR).
- 265/460 VOLT SERVICE REQUIRES A DISCONNECT SWITCH BEFORE THE CT CABINET.



TRANS "S" AND SWITCH COMBINATION
400 AMP., 480 VOLT CON EDISON - LINE BOTTOM
CATALOG NUMBERS: TS/SW-400-480B



SERVICE EQUIPMENT



BOTTOM FEED ONLY

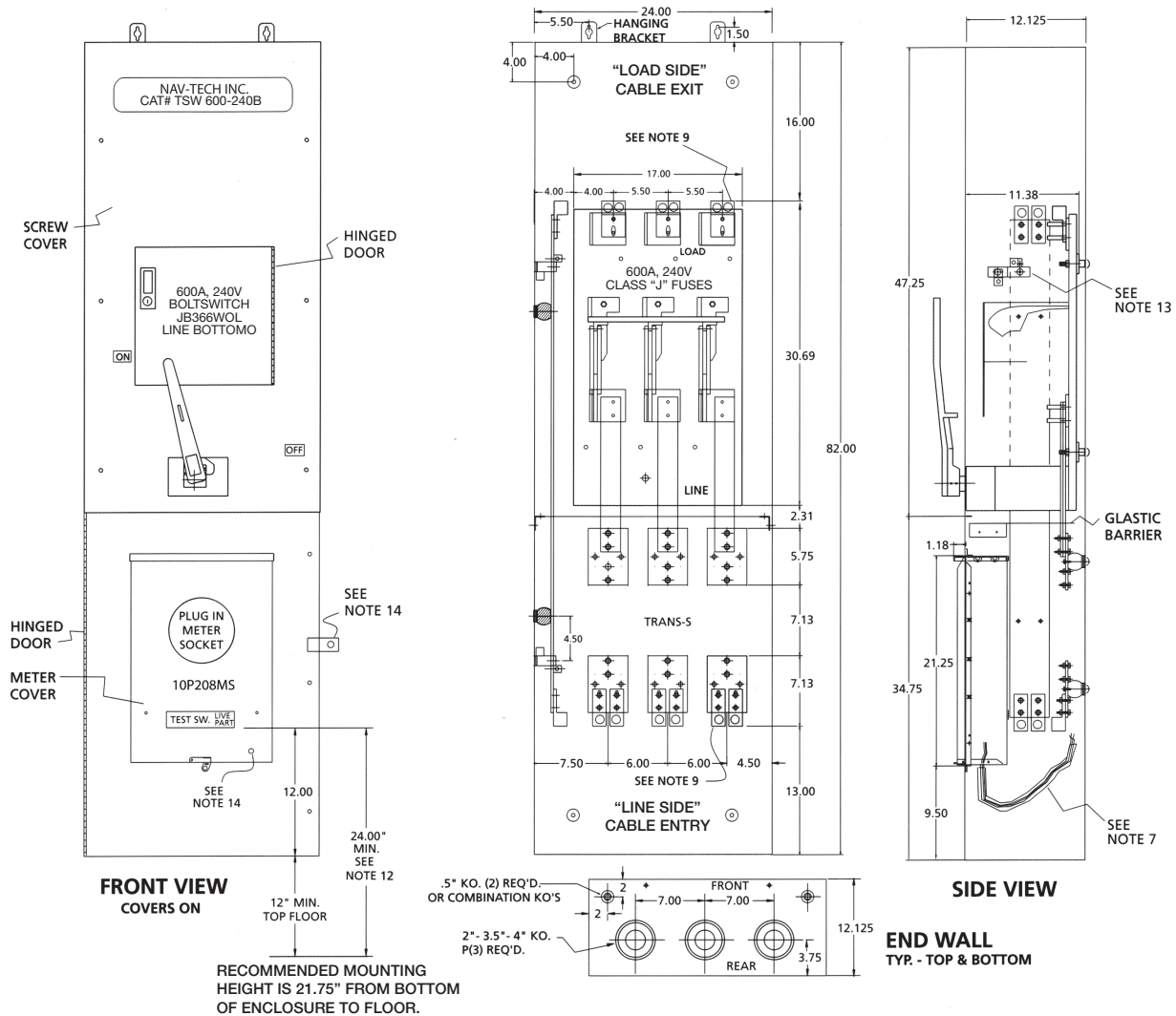
1. CABINET SHALL BE RATED NEMA I (INDOOR ONLY) AND SHALL BE CONSTRUCTED FROM CODE GAUGE GALVANIZED OR GALVANEALD STEEL.
2. BUS BAR SHALL BE SILVER OR TIN PLATED AND SHALL BE SIZED PER THE NEC.
3. BUS BAR SHALL BE MOUNTED IN THE CABINET BY MEANS OF STANDOFF INSULATORS OR INSULATED MOUNTING BRACKETS. INSULATING MATERIALS SHALL CONFORM TO THE APPLICABLE SECTIONS OF UL 746 AND UL 94. CABINET SHALL BE UL, CON EDISON AND N.Y.C. ADVISORY BOARD APPROVED.
4. THE CABINET IS INTENDED FOR CABLE ENTRY THROUGH BOTTOM AND EXIT THROUGH THE TOP ONLY..
5. THE SHORT CIRCUIT CAPABILITY OF THE CABINET ASSEMBLY SHALL BE RATED AT 200,000 RMS SYMMETRICAL AMPERES WITH CLASS "J" FUSES.
6. THE FUSED POWER CIRCUIT DEVICE REQUIRES 400AMP, 480V MAX., CLASS "J" FUSES (NOT PROVIDED).
7. INSULATED SLEEVING SHALL BE PROVIDED WHERE MULTICONDUCTOR BUNDLE PASSES UNDER NEUTRAL BAR. WIRE MOUNTS ARE RIVETED IN PLACE.
8. THE UNIT IS MARKED "SUITABLE FOR USE AS SERVICE EQUIPMENT"..
9. USE ONLY MANUFACTURER'S APPROVED LUG PROVIDED. EACH LUG IS RATED FOR (1) 600 MCM-#4 OR (2) 250MCM-#4 CABLE.
10. **ONLY FACTORY PREFABRICATED KNOCKOUTS ON THE ENCLOSURE SHALL BE USED.**
11. PROVIDE PREWIRED TRANS "S" UNIT WITH #12 AWG STRANDED (19/25) THHN COPPER COLOR CODED WIRE FROM THE TEST SWITCH TO THE SOCKET ASSEMBLY AND FROM THE TEST SWITCH TO THE METERING COMPARTMENT INTO C.T. COMPARTMENT. LEAVE 7 FT. OF WIRE FOR FUTURE CONNECTION TO CURRENT TRANSFORMERS. USE EITHER HOOK OR RING TYPE TINNED COPPER LUGS FOR TERMINATIONS. ALL WIRING IN ACCORDANCE WITH CON EDISON MES #751, FOR FORM 9S METER SOCKET.
12. NEAREST LIVE PARTS ARE 24" MINIMUM TO FLOOR.
13. THE UNIT IS SHIPPED WITH AN "INSULATED NEUTRAL" AND A BOUNDING KIT ("BK8") PROVIDED WITH INSTRUCTIONS (FOR INSTALLATION AS REQUIRED BY CONTRACTOR).
14. SECURITY HARDWARE TO BE PROVIDED FOR CT CABINET DOOR AND METER ENCLOSURE (TO BE INSTALLED BY CONTRACTOR).
15. 265/460 VOLT SERVICE REQUIRES A DISCONNECT SWITCH BEFORE THE CT CABINET.



**TRANS "S" AND SWITCH COMBINATION
600 AMP., 240 VOLT CON EDISON - LINE BOTTOM
CATALOG NUMBERS: TS/SW-600-240B**



SERVICE EQUIPMENT



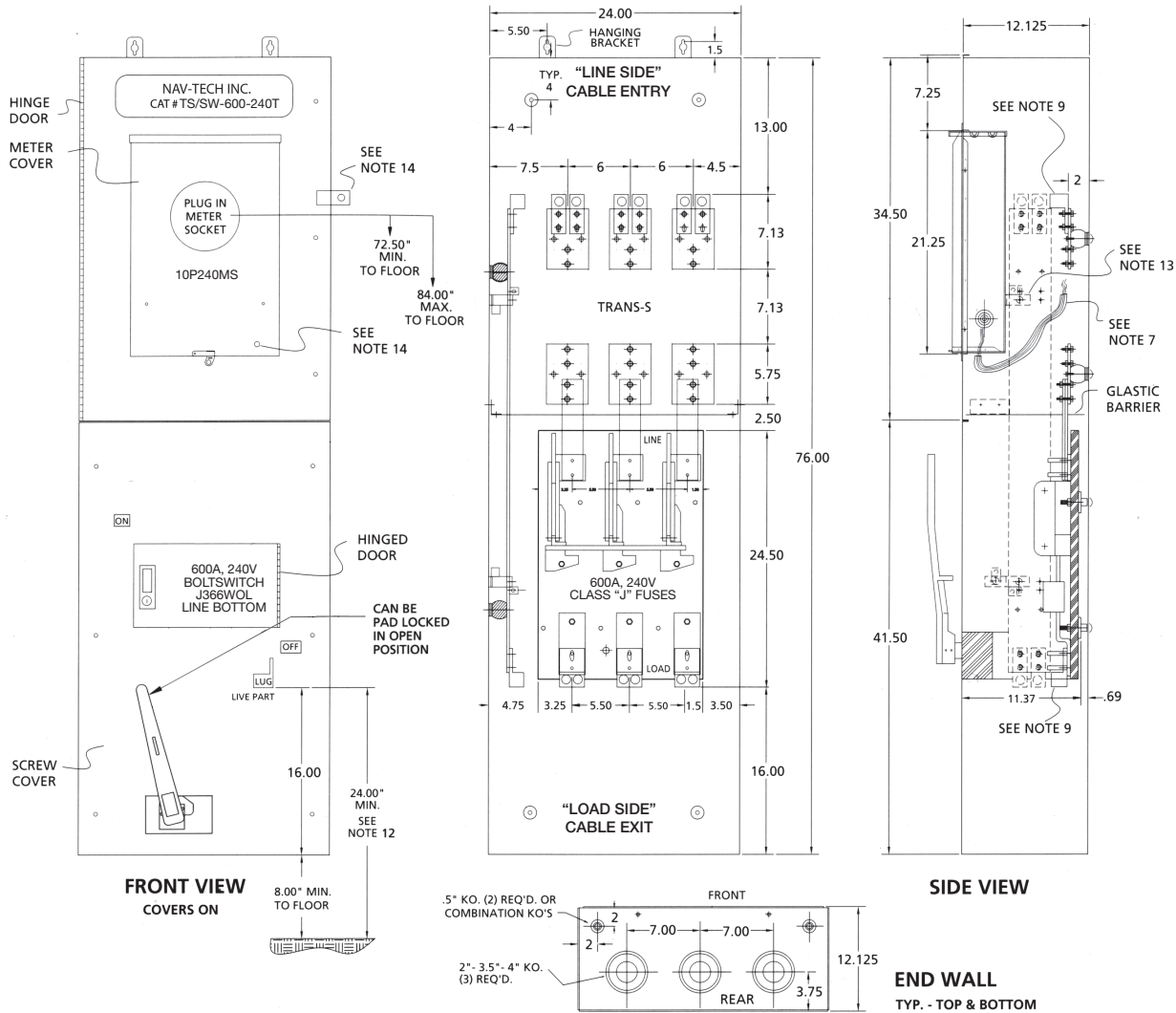
- CABINET SHALL BE RATED NEMA I (INDOOR ONLY) AND SHALL BE CONSTRUCTED FROM CODE GAUGE GALVANIZED OR GALVANEALD STEEL.
- BUS BAR SHALL BE SILVER OR TIN PLATED AND SHALL BE SIZED PER THE NEC.
- BUS BAR SHALL BE MOUNTED IN THE CABINET BY MEANS OF STANDOFF INSULATORS OR INSULATED MOUNTING BRACKETS. INSULATING MATERIALS SHALL CONFORM TO THE APPLICABLE SECTIONS OF UL 746 AND UL 94. CABINET SHALL BE UL, CON EDISON AND N.Y.C. ADVISORY BOARD APPROVED.
- THE CABINET IS INTENDED FOR CABLE ENTRY THROUGH BOTTOM AND EXIT THROUGH THE TOP ONLY..
- THE SHORT CIRCUIT CAPABILITY OF THE CABINET ASSEMBLY SHALL BE RATED AT 200,000 RMS SYMMETRICAL AMPERES WITH CLASS "J" FUSES.
- THE FUSED POWER CIRCUIT DEVICE REQUIRES 800AMP, 250V MAX., CLASS "J" FUSES (NOT PROVIDED).
- INSULATED SLEEVING SHALL BE PROVIDED WHERE MULTICONDUCTOR BUNDLE PASSES UNDER NEUTRAL BAR. WIRE MOUNTS ARE RIVETED IN PLACE.
- THE UNIT IS MARKED "SUITABLE FOR USE AS SERVICE EQUIPMENT"..
- USE ONLY MANUFACTURER'S APPROVED LUG PROVIDED. EACH SINGLE LUG IS RATED FOR (1) 600 MCM-#4 OR (2) 250MCM-#4 CABLE. EACH DOUBLE LUG ON SWITCH SIDE IS RATED FOR (2) 600MCM-#4 CABLE.
- ONLY FACTORY PREFABRICATED KNOCKOUTS ON THE ENCLOSURE SHALL BE USED.**
- PROVIDE PREWIRED TRANS "S" UNIT WITH #12 AWG STRANDED (19/25) THHN COPPER COLOR CODED WIRE FROM THE TEST SWITCH TO THE SOCKET ASSEMBLY AND FROM THE TEST SWITCH TO THE METERING COMPARTMENT INTO C.T. COMPARTMENT. LEAVE 7 FT. OF WIRE FOR FUTURE CONNECTION TO CURRENT TRANSFORMERS. USE EITHER HOOK OR RING TYPE TINNED COPPER LUGS FOR TERMINATIONS. ALL WIRING IN ACCORDANCE WITH CON EDISON MES #751, FOR FORM 9S METER SOCKET.
- NEAREST LIVE PARTS ARE 24" MINIMUM TO FLOOR.
- THE UNIT IS SHIPPED WITH AN "INSULATED NEUTRAL" AND A BOUNDING KIT ("BK8") PROVIDED WITH INSTRUCTIONS (FOR INSTALLATION AS REQUIRED BY CONTRACTOR).
- SECURITY HARDWARE TO BE PROVIDED FOR CT CABINET DOOR AND METER ENCLOSURE (TO BE INSTALLED BY CONTRACTOR).
- 265/460 VOLT SERVICE REQUIRES A DISCONNECT SWITCH BEFORE THE CT CABINET.



**TRANS "S" AND SWITCH COMBINATION
600 AMP., 240 VOLT CON EDISON - LINE TOP
CATALOG NUMBERS: TS/SW-600-240T**



SERVICE EQUIPMENT



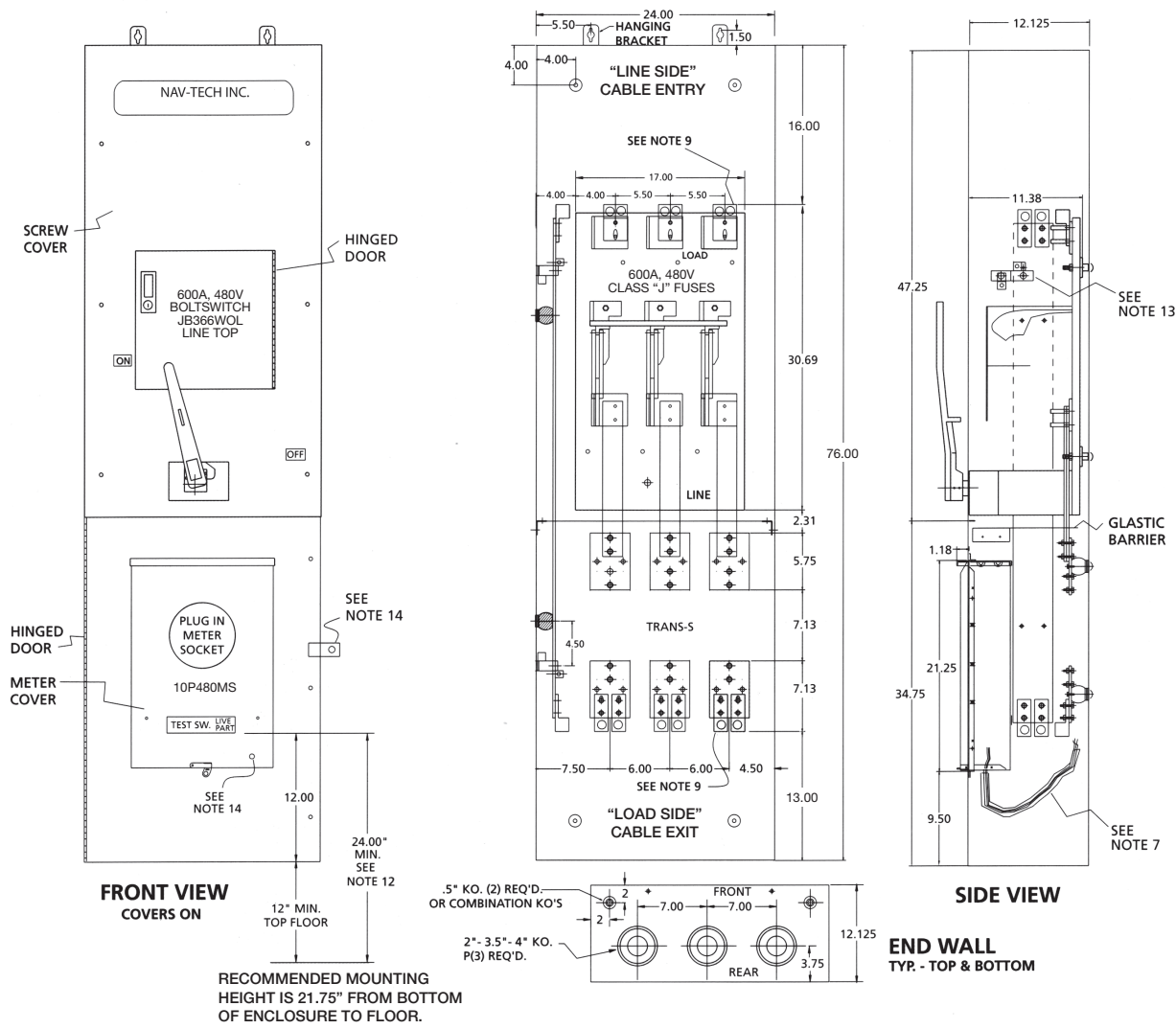
- CABINET SHALL BE RATED NEMA 1 (INDOOR ONLY) AND SHALL BE CONSTRUCTED FROM CODE GAUGE GALVANIZED OR GALVANEALD STEEL.
- BUS BAR SHALL BE SILVER OR TIN PLATED AND SHALL BE SIZED PER THE NEC.
- BUS BAR SHALL BE MOUNTED IN THE CABINET BY MEANS OF STANDOFF INSULATORS OR INSULATED MOUNTING BRACKETS. INSULATING MATERIALS SHALL CONFORM TO THE APPLICABLE SECTIONS OF UL 746 AND UL 94. CABINET SHALL BE UL, CON EDISON AND N.Y.C. ADVISORY BOARD APPROVED.
- THE CABINET IS INTENDED FOR CABLE ENTRY THROUGH TOP AND EXIT THROUGH THE BOTTOM ONLY.
- THE SHORT CIRCUIT CAPABILITY OF THE CABINET ASSEMBLY SHALL BE RATED AT 200,000 RMS SYMMETRICAL AMPERES WITH CLASS "J" FUSES.
- THE FUSED POWER CIRCUIT DEVICE REQUIRES 800AMP, 250V MAX., CLASS "J" FUSES (NOT PROVIDED).
- INSULATED SLEEVING SHALL BE PROVIDED WHERE MULTICONDUCTOR BUNDLE PASSES UNDER NEUTRAL BAR. WIRE MOUNTS ARE RIVETED IN PLACE.
- THE UNIT IS MARKED "SUITABLE FOR USE AS SERVICE EQUIPMENT".
- USE ONLY MANUFACTURER'S APPROVED LUG PROVIDED. EACH SINGLE LUG IS RATED FOR (1) 600 MCM-#4 OR (2) 250MCM-#4 CABLE. EACH DOUBLE LUG ON SWITCH SIDE IS RATED FOR (2) 600MCM-#4 CABLE.
- ONLY FACTORY PREFABRICATED KNOCKOUTS ON THE ENCLOSURE SHALL BE USED.**
- PROVIDE PREWIRED TRANS "S" UNIT WITH #12 AWG STRANDED (19/25) THHN COPPER COLOR CODED WIRE FROM THE TEST SWITCH TO THE SOCKET ASSEMBLY AND FROM THE TEST SWITCH TO THE METERING COMPARTMENT INTO C.T. COMPARTMENT. LEAVE 7 FT. OF WIRE FOR FUTURE CONNECTION TO CURRENT TRANSFORMERS. USE EITHER HOOK OR RING TYPE TINNED COPPER LUGS FOR TERMINATIONS. ALL WIRING IN ACCORDANCE WITH CON EDISON MES #751, FOR FORM 9S METER SOCKET.
- NEAREST LIVE PARTS ARE 24" MINIMUM TO FLOOR.
- THE UNIT IS SHIPPED WITH AN "INSULATED NEUTRAL" AND A BOUNDING KIT ("BK8") PROVIDED WITH INSTRUCTIONS (FOR INSTALLATION AS REQUIRED BY CONTRACTOR).
- SECURITY HARDWARE TO BE PROVIDED FOR CT CABINET DOOR AND METER ENCLOSURE (TO BE INSTALLED BY CONTRACTOR).
- 265/460 VOLT SERVICE REQUIRES A DISCONNECT SWITCH BEFORE THE CT CABINET.



**TRANS "S" AND SWITCH COMBINATION
600 AMP., 480 VOLT CON EDISON - LINE TOP
CATALOG NUMBERS: TS/SW-600-480T**



SERVICE EQUIPMENT



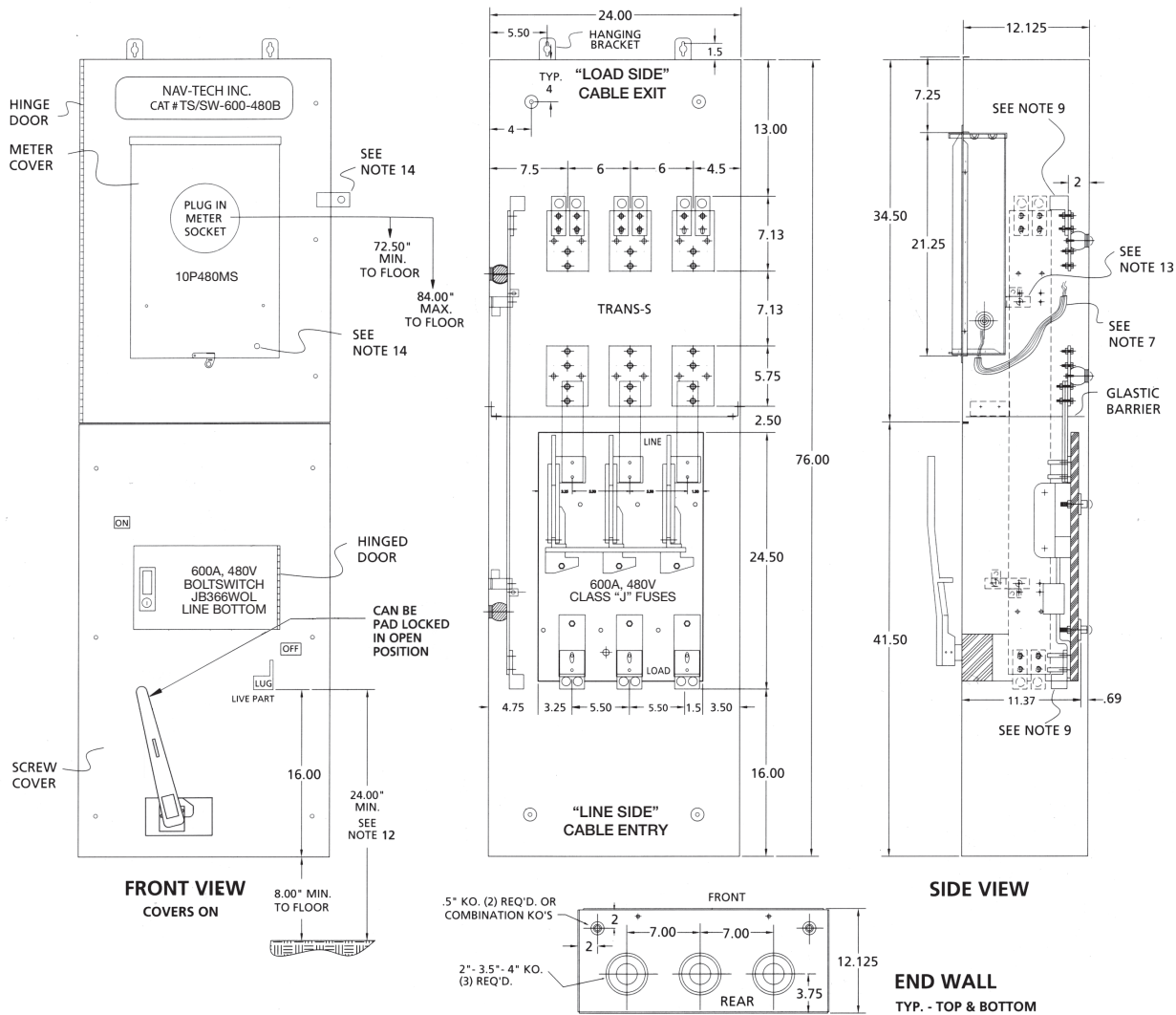
- CABINET SHALL BE RATED NEMA I (INDOOR ONLY) AND SHALL BE CONSTRUCTED FROM CODE GAUGE GALVANIZED OR GALVANEALD STEEL.
- BUS BAR SHALL BE SILVER OR TIN PLATED AND SHALL BE SIZED PER THE NEC.
- BUS BAR SHALL BE MOUNTED IN THE CABINET BY MEANS OF STANDOFF INSULATORS OR INSULATED MOUNTING BRACKETS. INSULATING MATERIALS SHALL CONFORM TO THE APPLICABLE SECTIONS OF UL 746 AND UL 94. CABINET SHALL BE UL, CON EDISON AND N.Y.C. ADVISORY BOARD APPROVED.
- THE CABINET IS INTENDED FOR CABLE ENTRY THROUGH BOTTOM AND EXIT THROUGH THE TOP ONLY..
- THE SHORT CIRCUIT CAPABILITY OF THE CABINET ASSEMBLY SHALL BE RATED AT 200,000 RMS SYMMETRICAL AMPERES WITH CLASS "J" FUSES.
- THE FUSED POWER CIRCUIT DEVICE REQUIRES 800AMP, 480V MAX., CLASS "J" FUSES (NOT PROVIDED).
- INSULATED SLEEVING SHALL BE PROVIDED WHERE MULTICONDUCTOR BUNDLE PASSES UNDER NEUTRAL BAR. WIRE MOUNTS ARE RIVETED IN PLACE.
- THE UNIT IS MARKED "SUITABLE FOR USE AS SERVICE EQUIPMENT"..
- USE ONLY MANUFACTURER'S APPROVED LUG PROVIDED. EACH SINGLE LUG IS RATED FOR (1) 600 MCM-#4 OR (2) 250MCM-#4 CABLE. EACH DOUBLE LUG ON SWITCH SIDE IS RATED FOR (2) 600MCM-#4 CABLE.
- ONLY FACTORY PREFABRICATED KNOCKOUTS ON THE ENCLOSURE SHALL BE USED.**
- PROVIDE PREWIRED TRANS "S" UNIT WITH #12 AWG STRANDED (19/25) THHN COPPER COLOR CODED WIRE FROM THE TEST SWITCH TO THE SOCKET ASSEMBLY AND FROM THE TEST SWITCH TO THE METERING COMPARTMENT INTO C.T. COMPARTMENT. LEAVE 7 FT. OF WIRE FOR FUTURE CONNECTION TO CURRENT TRANSFORMERS. USE EITHER HOOK OR RING TYPE TINNED COPPER LUGS FOR TERMINATIONS. ALL WIRING IN ACCORDANCE WITH CON EDISON MES #751, FOR FORM 9S METER SOCKET.
- NEAREST LIVE PARTS ARE 24" MINIMUM TO FLOOR.
- THE UNIT IS SHIPPED WITH AN "INSULATED NEUTRAL" AND A BOUNDING KIT ("BK8") PROVIDED WITH INSTRUCTIONS (FOR INSTALLATION AS REQUIRED BY CONTRACTOR).
- SECURITY HARDWARE TO BE PROVIDED FOR CT CABINET DOOR AND METER ENCLOSURE (TO BE INSTALLED BY CONTRACTOR).
- 265/460 VOLT SERVICE REQUIRES A DISCONNECT SWITCH BEFORE THE CT CABINET.



TRANS "S" AND SWITCH COMBINATION
600 AMP., 480 VOLT CON EDISON - LINE BOTTOM
CATALOG NUMBERS: TS/SW-600-480B



SERVICE EQUIPMENT



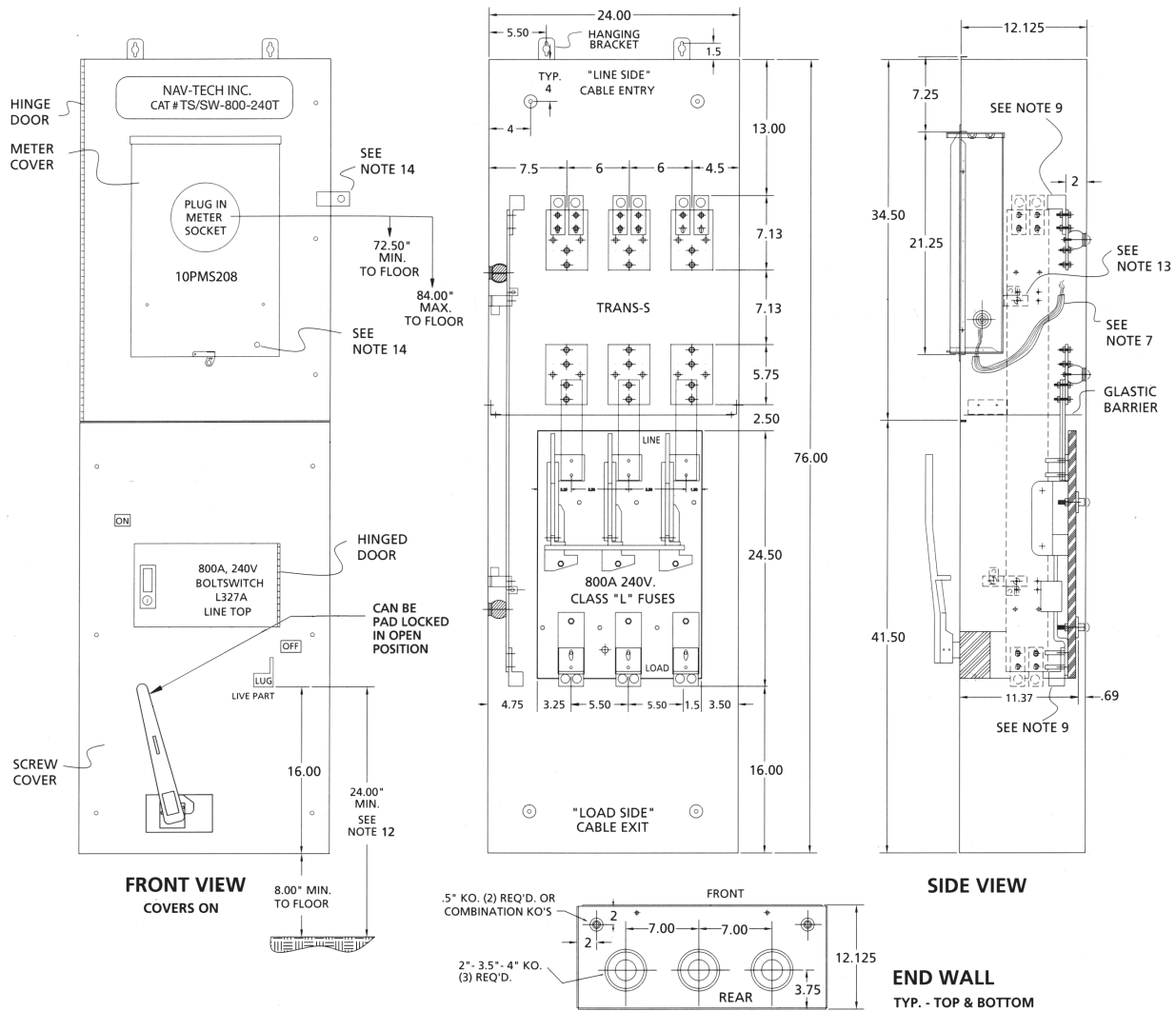
- CABINET SHALL BE RATED NEMA 1 (INDOOR ONLY) AND SHALL BE CONSTRUCTED FROM CODE GAUGE GALVANIZED OR GALVANEALD STEEL.
- BUS BAR SHALL BE SILVER OR TIN PLATED AND SHALL BE SIZED PER THE NEC.
- BUS BAR SHALL BE MOUNTED IN THE CABINET BY MEANS OF STANDOFF INSULATORS OR INSULATED MOUNTING BRACKETS. INSULATING MATERIALS SHALL CONFORM TO THE APPLICABLE SECTIONS OF UL 746 AND UL 94. CABINET SHALL BE UL, CON EDISON AND N.Y.C. ADVISORY BOARD APPROVED.
- THE CABINET IS INTENDED FOR CABLE ENTRY THROUGH TOP AND EXIT THROUGH THE BOTTOM ONLY.
- THE SHORT CIRCUIT CAPABILITY OF THE CABINET ASSEMBLY SHALL BE RATED AT 200,000 RMS SYMMETRICAL AMPERES WITH CLASS "J" FUSES.
- THE FUSED POWER CIRCUIT DEVICE REQUIRES 800AMP, 480V MAX., CLASS "J" FUSES (NOT PROVIDED).
- INSULATED SLEEVING SHALL BE PROVIDED WHERE MULTICONDUCTOR BUNDLE PASSES UNDER NEUTRAL BAR. WIRE MOUNTS ARE RIVETED IN PLACE.
- THE UNIT IS MARKED "SUITABLE FOR USE AS SERVICE EQUIPMENT"..
- USE ONLY MANUFACTURER'S APPROVED LUG PROVIDED. EACH SINGLE LUG IS RATED FOR (1) 600 MCM-#4 OR (2) 250MCM-#4 CABLE. EACH DOUBLE LUG ON SWITCH SIDE IS RATED FOR (2) 600MCM-#4 CABLE.
- ONLY FACTORY PREFABRICATED KNOCKOUTS ON THE ENCLOSURE SHALL BE USED.**
- PROVIDE PREWIRED TRANS "S" UNIT WITH #12 AWG STRANDED (19/25) THHN COPPER COLOR CODED WIRE FROM THE TEST SWITCH TO THE SOCKET ASSEMBLY AND FROM THE TEST SWITCH TO THE METERING COMPARTMENT INTO C.T. COMPARTMENT. LEAVE 7 FT. OF WIRE FOR FUTURE CONNECTION TO CURRENT TRANSFORMERS. USE EITHER HOOK OR RING TYPE TINNED COPPER LUGS FOR TERMINATIONS. ALL WIRING IN ACCORDANCE WITH CON EDISON MES #751, FOR FORM 9S METER SOCKET.
- NEAREST LIVE PARTS ARE 24" MINIMUM TO FLOOR.
- THE UNIT IS SHIPPED WITH AN "INSULATED NEUTRAL" AND A BOUNDING KIT ("BK8") PROVIDED WITH INSTRUCTIONS (FOR INSTALLATION AS REQUIRED BY CONTRACTOR).
- SECURITY HARDWARE TO BE PROVIDED FOR CT CABINET DOOR AND METER ENCLOSURE (TO BE INSTALLED BY CONTRACTOR).
- 265/460 VOLT SERVICE REQUIRES A DISCONNECT SWITCH BEFORE THE CT CABINET.



**TRANS "S" AND SWITCH COMBINATION
800 AMP., 240 VOLT CON EDISON - LINE TOP
CATALOG NUMBERS: TS/SW-800-240T**



SERVICE EQUIPMENT

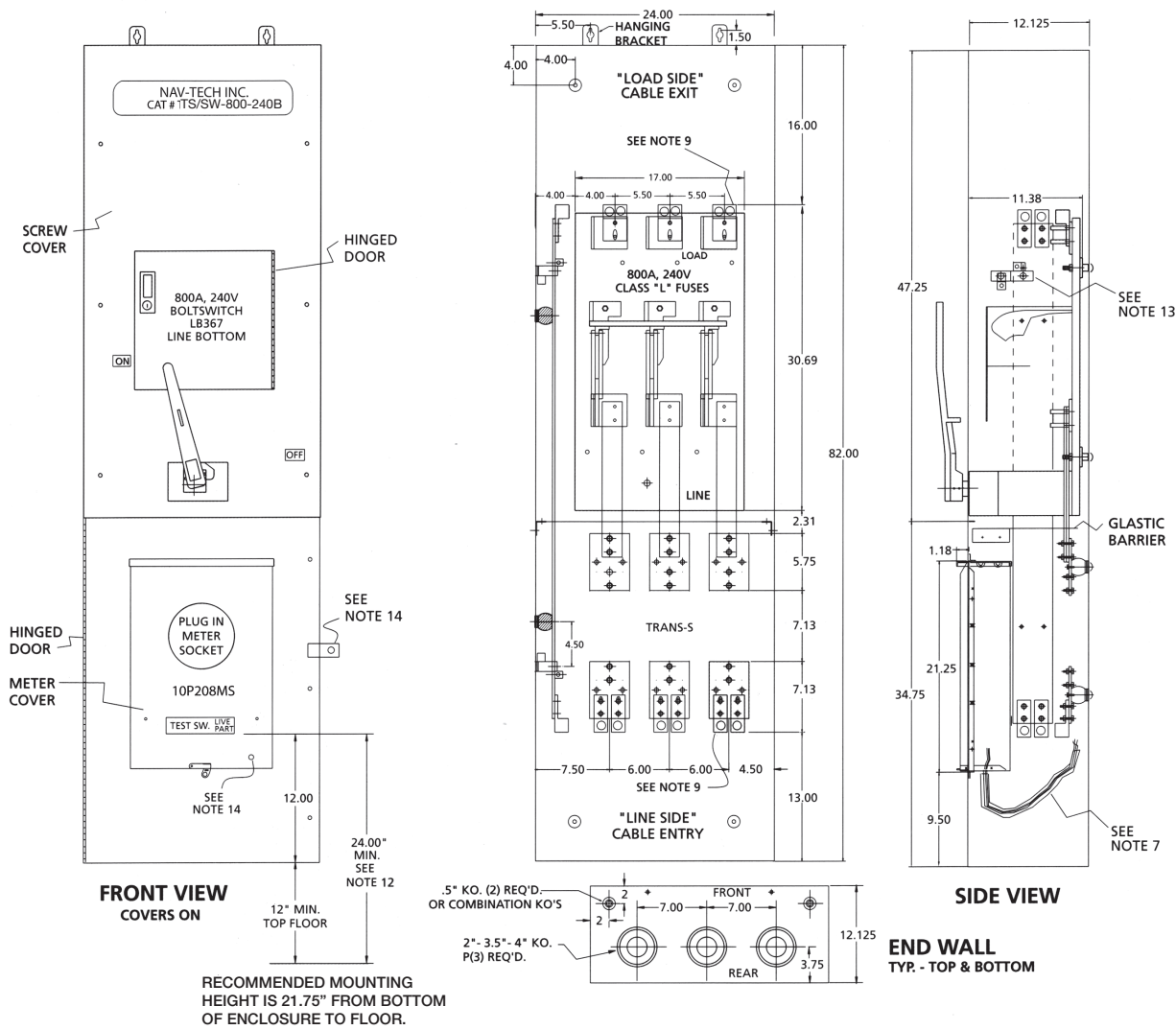


1. CABINET SHALL BE RATED NEMA I (INDOOR ONLY) AND SHALL BE CONSTRUCTED FROM CODE GAUGE GALVANIZED OR GALVANEALD STEEL.
2. BUS BAR SHALL BE SILVER OR TIN PLATED AND SHALL BE SIZED PER THE NEC.
3. BUS BAR SHALL BE MOUNTED IN THE CABINET BY MEANS OF STANDOFF INSULATORS OR INSULATED MOUNTING BRACKETS. INSULATING MATERIALS SHALL CONFORM TO THE APPLICABLE SECTIONS OF UL 746 AND UL 94. CABINET SHALL BE UL, CON EDISON AND N.Y.C. ADVISORY BOARD APPROVED.
4. THE CABINET IS INTENDED FOR CABLE ENTRY THROUGH TOP AND EXIT THROUGH THE BOTTOM ONLY..
5. THE SHORT CIRCUIT CAPABILITY OF THE CABINET ASSEMBLY SHALL BE RATED AT 200,000 RMS SYMMETRICAL AMPERES WITH CLASS "L" FUSES.
6. THE FUSED POWER CIRCUIT DEVICE REQUIRES 800AMP, 250V MAX., CLASS "L" FUSES (NOT PROVIDED).
7. INSULATED SLEEVING SHALL BE PROVIDED WHERE MULTICONDUCTOR BUNDLE PASSES UNDER NEUTRAL BAR. WIRE MOUNTS ARE RIVETED IN PLACE.
8. THE UNIT IS MARKED "SUITABLE FOR USE AS SERVICE EQUIPMENT"..

9. USE ONLY MANUFACTURER'S APPROVED LUG PROVIDED. EACH SINGLE LUG IS RATED FOR (1) 600 MCM-#4 OR (2) 250MCM-#4 CABLE. EACH DOUBLE LUG ON SWITCH SIDE IS RATED FOR (2) 600MCM-#4 CABLE.
10. **ONLY FACTORY PREFABRICATED KNOCKOUTS ON THE ENCLOSURE SHALL BE USED.**
11. PROVIDE PREWIRED TRANS "S" UNIT WITH #12 AWG STRANDED (19/25) THHN COPPER COLOR CODED WIRE FROM THE TEST SWITCH TO THE SOCKET ASSEMBLY AND FROM THE TEST SWITCH TO THE METERING COMPARTMENT INTO C.T. COMPARTMENT. LEAVE 7 FT. OF WIRE FOR FUTURE CONNECTION TO CURRENT TRANSFORMERS. USE EITHER HOOK OR RING TYPE TINNED COPPER LUGS FOR TERMINATIONS. ALL WIRING IN ACCORDANCE WITH CON EDISON MES #751, FOR FORM 9S METER SOCKET.
12. NEAREST LIVE PARTS ARE 24" MINIMUM TO FLOOR.
13. THE UNIT IS SHIPPED WITH AN "INSULATED NEUTRAL" AND A BOUNDING KIT ("BK8") PROVIDED WITH INSTRUCTIONS (FOR INSTALLATION AS REQUIRED BY CONTRACTOR).
14. SECURITY HARDWARE TO BE PROVIDED FOR CT CABINET DOOR AND METER ENCLOSURE (TO BE INSTALLED BY CONTRACTOR).
15. 265/460 VOLT SERVICE REQUIRES A DISCONNECT SWITCH BEFORE THE CT CABINET.



TRANS "S" AND SWITCH COMBINATION 800 AMP., 240 VOLT CON EDISON - LINE BOTTOM CATALOG NUMBERS: TS/SW-800-240B



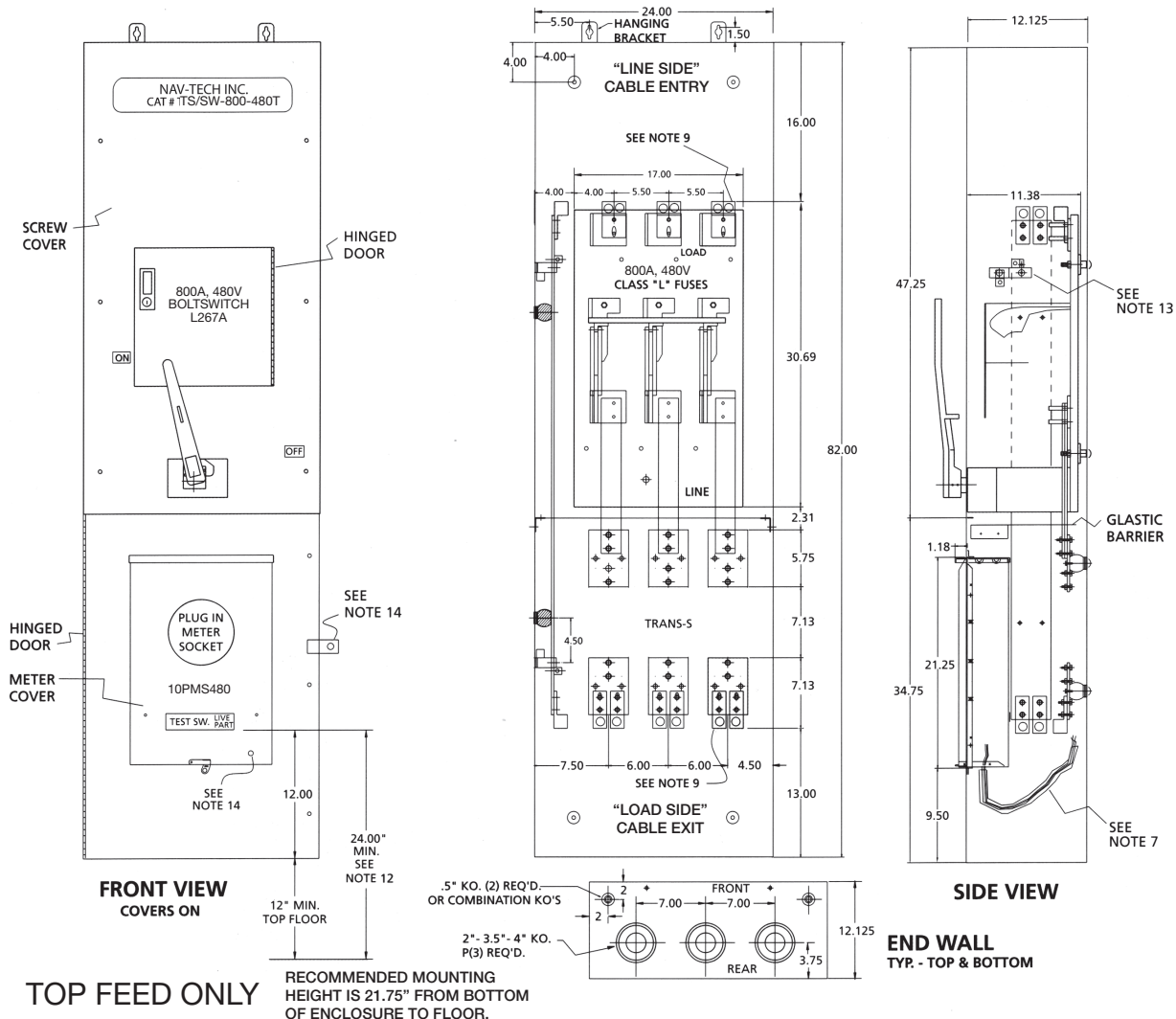
- CABINET SHALL BE RATED NEMA I (INDOOR ONLY) AND SHALL BE CONSTRUCTED FROM CODE GAUGE GALVANIZED OR GALVANEALD STEEL.
- BUS BAR SHALL BE SILVER OR TIN PLATED AND SHALL BE SIZED PER THE NEC.
- BUS BAR SHALL BE MOUNTED IN THE CABINET BY MEANS OF STANDOFF INSULATORS OR INSULATED MOUNTING BRACKETS. INSULATING MATERIALS SHALL CONFORM TO THE APPLICABLE SECTIONS OF UL 746 AND UL 94. CABINET SHALL BE UL, CON EDISON AND N.Y.C. ADVISORY BOARD APPROVED.
- THE CABINET IS INTENDED FOR CABLE ENTRY THROUGH BOTTOM AND EXIT THROUGH THE TOP ONLY.
- THE SHORT CIRCUIT CAPABILITY OF THE CABINET ASSEMBLY SHALL BE RATED AT 200,000 RMS SYMMETRICAL AMPERES WITH CLASS "L" FUSES.
- THE FUSED POWER CIRCUIT DEVICE REQUIRES 800AMP, 250V MAX., CLASS "L" FUSES (NOT PROVIDED).
- INSULATED SLEEVING SHALL BE PROVIDED WHERE MULTICONDUCTOR BUNDLE PASSES UNDER NEUTRAL BAR. WIRE MOUNTS ARE RIVETED IN PLACE.
- THE UNIT IS MARKED "SUITABLE FOR USE AS SERVICE EQUIPMENT"..
- USE ONLY MANUFACTURER'S APPROVED LUG PROVIDED. EACH SINGLE LUG IS RATED FOR (1) 600 MCM-#4 OR (2) 250MCM-#4 CABLE. EACH DOUBLE LUG ON SWITCH SIDE IS RATED FOR (2) 600MCM-#4 CABLE.
- ONLY FACTORY PREFABRICATED KNOCKOUTS ON THE ENCLOSURE SHALL BE USED.**
- PROVIDE PREWIRED TRANS "S" UNIT WITH #12 AWG STRANDED (19/25) THHN COPPER COLOR CODED WIRE FROM THE TEST SWITCH TO THE SOCKET ASSEMBLY AND FROM THE TEST SWITCH TO THE METERING COMPARTMENT INTO C.T. COMPARTMENT. LEAVE 7 FT. OF WIRE FOR FUTURE CONNECTION TO CURRENT TRANSFORMERS. USE EITHER HOOK OR RING TYPE TINNED COPPER LUGS FOR TERMINATIONS. ALL WIRING IN ACCORDANCE WITH CON EDISON MES #751, FOR FORM 9S METER SOCKET.
- NEAREST LIVE PARTS ARE 24" MINIMUM TO FLOOR.
- THE UNIT IS SHIPPED WITH AN "INSULATED NEUTRAL" AND A BOUNDING KIT ("BK8") PROVIDED WITH INSTRUCTIONS (FOR INSTALLATION AS REQUIRED BY CONTRACTOR).
- SECURITY HARDWARE TO BE PROVIDED FOR CT CABINET DOOR AND METER ENCLOSURE (TO BE INSTALLED BY CONTRACTOR).
- 265/460 VOLT SERVICE REQUIRES A DISCONNECT SWITCH BEFORE THE CT CABINET.



**TRANS "S" AND SWITCH COMBINATION
800 AMP., 480 VOLT CON EDISON - LINE TOP
CATALOG NUMBERS: TS/SW-800-480T**



SERVICE EQUIPMENT



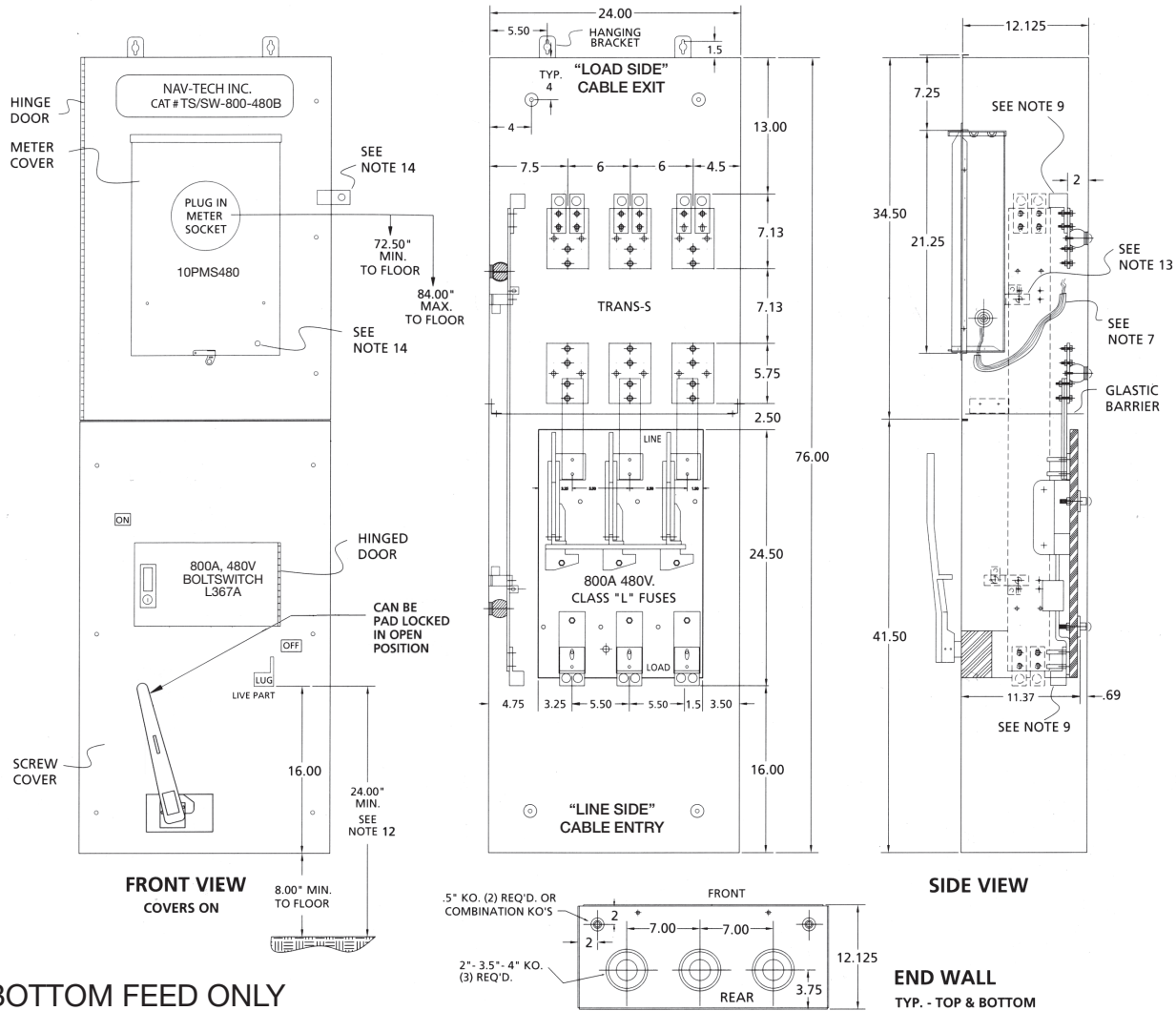
- CABINET SHALL BE RATED NEMA 1 (INDOOR ONLY) AND SHALL BE CONSTRUCTED FROM CODE GAUGE GALVANIZED OR GALVANEALD STEEL.
- BUS BAR SHALL BE SILVER OR TIN PLATED AND SHALL BE SIZED PER THE NEC.
- BUS BAR SHALL BE MOUNTED IN THE CABINET BY MEANS OF STANDOFF INSULATORS OR INSULATED MOUNTING BRACKETS. INSULATING MATERIALS SHALL CONFORM TO THE APPLICABLE SECTIONS OF UL 746 AND UL 94. CABINET SHALL BE UL, CON EDISON AND N.Y.C. ADVISORY BOARD APPROVED.
- THE CABINET IS INTENDED FOR CABLE ENTRY THROUGH BOTTOM AND EXIT THROUGH THE TOP ONLY..
- THE SHORT CIRCUIT CAPABILITY OF THE CABINET ASSEMBLY SHALL BE RATED AT 200,000 RMS SYMMETRICAL AMPERES WITH CLASS "J" FUSES.
- THE FUSED POWER CIRCUIT DEVICE REQUIRES 800AMP, 250V MAX., CLASS "J" FUSES (NOT PROVIDED).
- INSULATED SLEEVING SHALL BE PROVIDED WHERE MULTICONDUCTOR BUNDLE PASSES UNDER NEUTRAL BAR. WIRE MOUNTS ARE RIVETED IN PLACE.
- THE UNIT IS MARKED "SUITABLE FOR USE AS SERVICE EQUIPMENT"..
- USE ONLY MANUFACTURER'S APPROVED LUG PROVIDED. EACH SINGLE LUG IS RATED FOR (1) 600 MCM-#4 OR (2) 250MCM-#4 CABLE. EACH DOUBLE LUG ON SWITCH SIDE IS RATED FOR (2) 600MCM-#4 CABLE.
- ONLY FACTORY PREFABRICATED KNOCKOUTS ON THE ENCLOSURE SHALL BE USED.**
- PROVIDE PREWIRED TRANS "S" UNIT WITH #12 AWG STRANDED (19/25) THHN COPPER COLOR CODED WIRE FROM THE TEST SWITCH TO THE SOCKET ASSEMBLY AND FROM THE TEST SWITCH TO THE METERING COMPARTMENT INTO C.T. COMPARTMENT. LEAVE 7 FT. OF WIRE FOR FUTURE CONNECTION TO CURRENT TRANSFORMERS. USE EITHER HOOK OR RING TYPE TINNED COPPER LUGS FOR TERMINATIONS. ALL WIRING IN ACCORDANCE WITH CON EDISON MES #751, FOR FORM 9S METER SOCKET.
- NEAREST LIVE PARTS ARE 24" MINIMUM TO FLOOR.
- THE UNIT IS SHIPPED WITH AN "INSULATED NEUTRAL" AND A BOUNDING KIT ("BK8") PROVIDED WITH INSTRUCTIONS (FOR INSTALLATION AS REQUIRED BY CONTRACTOR).
- SECURITY HARDWARE TO BE PROVIDED FOR CT CABINET DOOR AND METER ENCLOSURE (TO BE INSTALLED BY CONTRACTOR).
- 265/460 VOLT SERVICE REQUIRES A DISCONNECT SWITCH BEFORE THE CT CABINET.



TRANS "S" AND SWITCH COMBINATION
800 AMP., 480 VOLT CON EDISON - LINE BOTTOM
CATALOG NUMBERS: TS/SW-800-480B



SERVICE EQUIPMENT



BOTTOM FEED ONLY

- CABINET SHALL BE RATED NEMA 1 (INDOOR ONLY) AND SHALL BE CONSTRUCTED FROM CODE GAUGE GALVANIZED OR GALVANEALD STEEL.
- BUS BAR SHALL BE SILVER OR TIN PLATED AND SHALL BE SIZED PER THE NEC.
- BUS BAR SHALL BE MOUNTED IN THE CABINET BY MEANS OF STANDOFF INSULATORS OR INSULATED MOUNTING BRACKETS. INSULATING MATERIALS SHALL CONFORM TO THE APPLICABLE SECTIONS OF UL 746 AND UL 94. CABINET SHALL BE UL, CON EDISON AND N.Y.C. ADVISORY BOARD APPROVED.
- THE CABINET IS INTENDED FOR CABLE ENTRY THROUGH TOP AND EXIT THROUGH THE BOTTOM ONLY..
- THE SHORT CIRCUIT CAPABILITY OF THE CABINET ASSEMBLY SHALL BE RATED AT 200,000 RMS SYMMETRICAL AMPERES WITH CLASS "L" FUSES.
- THE FUSED POWER CIRCUIT DEVICE REQUIRES 800AMP, 250V MAX., CLASS "L" FUSES (NOT PROVIDED).
- INSULATED SLEEVING SHALL BE PROVIDED WHERE MULTICONDUCTOR BUNDLE PASSES UNDER NEUTRAL BAR. WIRE MOUNTS ARE RIVETED IN PLACE.
- THE UNIT IS MARKED "SUITABLE FOR USE AS SERVICE EQUIPMENT"..
- USE ONLY MANUFACTURER'S APPROVED LUG PROVIDED. EACH SINGLE LUG IS RATED FOR (1) 600 MCM-#4 OR (2) 250MCM-#4 CABLE. EACH DOUBLE LUG ON SWITCH SIDE IS RATED FOR (2) 600MCM-#4 CABLE.
- ONLY FACTORY PREFABRICATED KNOCKOUTS ON THE ENCLOSURE SHALL BE USED.**
- PROVIDE PREWIRED TRANS "S" UNIT WITH #12 AWG STRANDED (19/25) THHN COPPER COLOR CODED WIRE FROM THE TEST SWITCH TO THE SOCKET ASSEMBLY AND FROM THE TEST SWITCH TO THE METERING COMPARTMENT INTO C.T. COMPARTMENT. LEAVE 7 FT. OF WIRE FOR FUTURE CONNECTION TO CURRENT TRANSFORMERS. USE EITHER HOOK OR RING TYPE TINNED COPPER LUGS FOR TERMINATIONS. ALL WIRING IN ACCORDANCE WITH CON EDISON MES #751, FOR FORM 9S METER SOCKET.
- NEAREST LIVE PARTS ARE 24" MINIMUM TO FLOOR.
- THE UNIT IS SHIPPED WITH AN "INSULATED NEUTRAL" AND A BOUNDING KIT ("BK8") PROVIDED WITH INSTRUCTIONS (FOR INSTALLATION AS REQUIRED BY CONTRACTOR).
- SECURITY HARDWARE TO BE PROVIDED FOR CT CABINET DOOR AND METER ENCLOSURE (TO BE INSTALLED BY CONTRACTOR).
- 265/460 VOLT SERVICE REQUIRES A DISCONNECT SWITCH BEFORE THE CT CABINET.



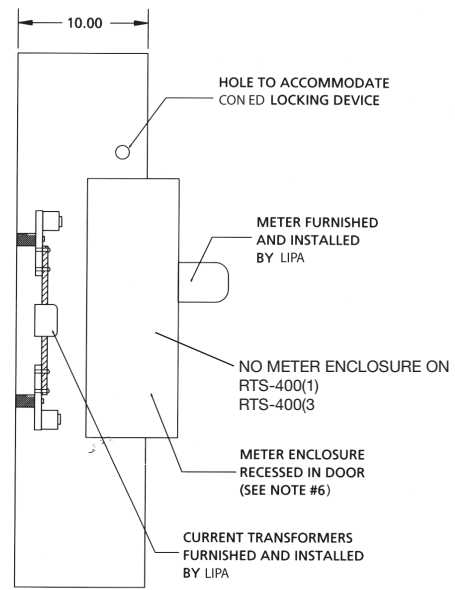
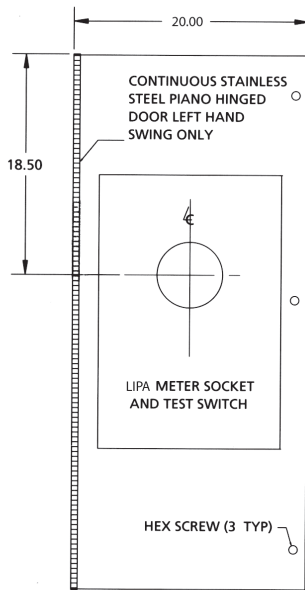
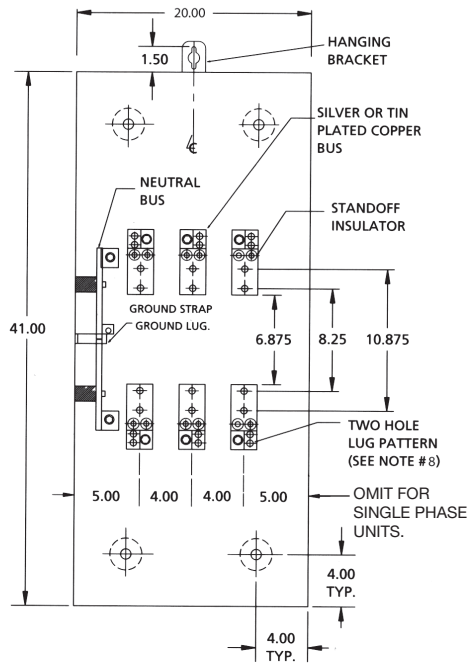
LIPA / KEYSpan EQUIPMENT



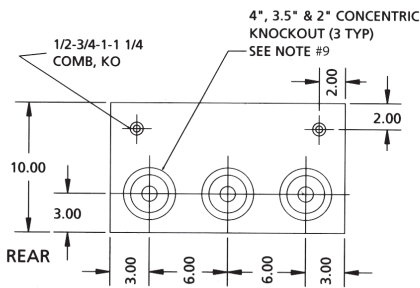
Con Ed Spec.	Navtech Cat. No	Size Description	Volts	Amps	List Price
TRANS-S	TS-400-208(1) LIPA	41x20x10	600	400	\$1,470.00
TRANS-S	TS-400-208(3) LIPA	41x20x10	600	400	1,570.00
TRANS-S	TS-400-208 SS LIPA	41x20x10	600	400	4,250.00
TRANS-S	TS-800-208(1) LIPA	48x24x10	600	800	1,700.00
TRANS-S	TS-800-208(3) LIPA	48x24x10	600	800	1,900.00
TRANS-S	TS-800-208 SS LIPA	48x24x10	600	800	5,500.00
6J-7PTS	MS7PTS LIPA	7 PT. METER SOCKET	600	30 AMP (CONT)	462.00
13J-10PTS	MS10PTS LIPA	10 PT. METER SOCKET	600	30 AMP (CONT)	570.00
TRANS-S & REMOTE	RTS-400(1)	41x20x10	600	400	940.00
TRANS-S & REMOTE	RTS-400(3)	41x20x10	600	400	1,050.00
TRANS-S & REMOTE	RTS-800(1)	48x24x10	600	800	1,330.00
TRANS-S & REMOTE	RTS-800(3)	48x24x10	600	800	1,490.00
TRANS-S/SWITCH	TS/SW-400-240T(3) LIPA	65x20x11	600	400	4,410.00
TRANS-S/SWITCH	TS/SW-400-240B(3) LIPA	70x20x11	600	400	4,640.00
TRANS-S/SWITCH	TS/SW-800-240T(3) LIPA	82x24x12	600	800	6,690.00
TRANS-S/SWITCH	TS/SW-800-240B(3) LIPA	76x20x12	600	800	7,000.00



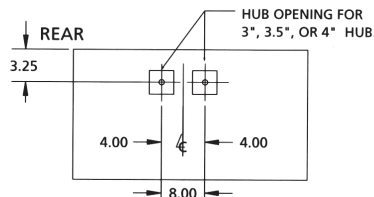
LIPA 400 AMP TRANS "S"
CURRENT TRANSFORMER CABINET (NEMA 3R)
200 AMP. & 400 AMP., 600V AC RATED
CATALOG NUMBER TS-400-208(1) TS-400-208(3)
RTS-400(1) RTS-400(3)



SIDE VIEW



BOTTOM VIEW



TOP VIEW

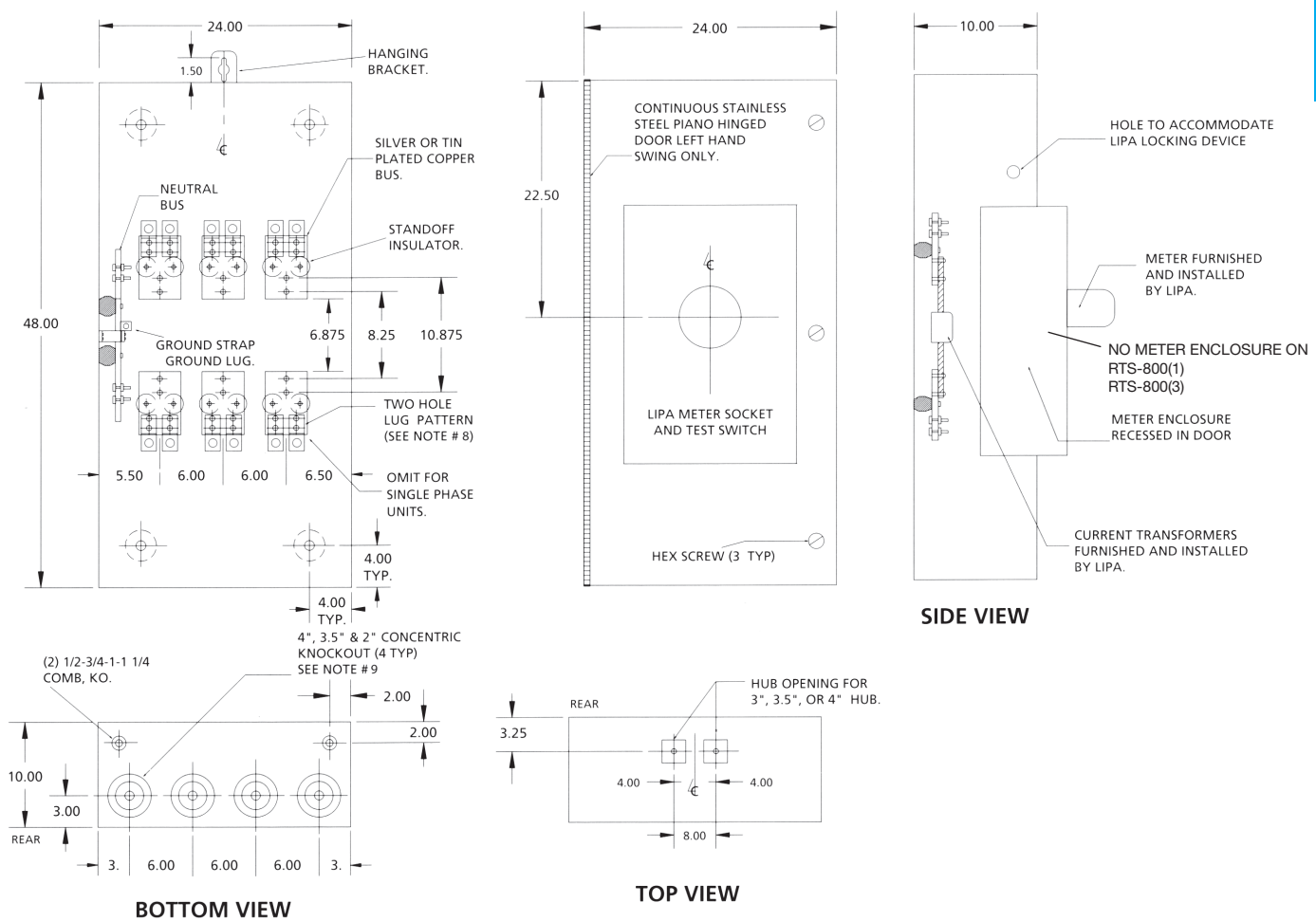
- CABINET SHALL BE RATED NEMA 3R AND SHALL BE CONSTRUCTED FROM CODE GAUGE GALVANIZED OR GALVANNEALED STEEL.
- BUS BAR SHALL BE SILVER OR TIN PLATED AND SHALL BE SIZED PER THE NEC.
- BUS BAR SHALL BE MOUNTED IN THE CABINET BY MEANS OF STANDOFF INSULATORS OR INSULATED MOUNTING BRACKETS. INSULATING MATERIAL SHALL CONFORM TO THE APPLICABLE SECTIONS OF UL 746 AND UL 94. CABINET SHALL BE UL APPROVED.
- THE RIGHT HAND SIDE OF THE CABINET SHALL ALLOW FOR LINE AND LOAD CABLES TO ENTER AND EXIT THROUGH THEN TOP OR THE BOTTOM OF THE CABINET. THIS SPACE SHALL ALLOW FOR THE CABLES TO MEET THE MINIMUM BENDING RADIUS TO NEAREST PHASE OR NEUTRAL BUS AS PER THE NEC.
- THE SHORT CIRCUIT WITHSTAND CAPABILITY OF THE CABINET ASSEMBLY SHALL BE A MAXIMUM OF 50,000 RMS SYMMETRICAL AMPERES.
- CABINET DESIGN SHALL HAVE PROVISIONS FOR A SOLID DOOR TO ALLOW FOR THE METER ENCLOSURE TO BE MOUNTED REMOTELY FROM THE CABINET.
- MANUFACTURER SHALL FURNISH AND INSTALL _13 STUDS WITH SPLIT LOCK WASHERS AND HEX NUTS FOR CT MOUNTING.
- USE ONLY MANUFACTURER'S APPROVED LUG PROVIDED. EACH LUG IS RATED FOR (1) 600MCM-#4 OR (2) 250MCM-#4 CABLES:
- ONLY FACTORY PREFABRICATED KNOCKOUTS ON THE ENCLOSURE SHALL BE USED.**
- PROVIDE PREWIRED TRANS "S" UNIT IN ACCORD WITH LIPA CONSTRUCTION STANDARD: #8908A FOR SINGLE PHASE, 3 WIRE FORM 4S, OR CONSTRUCTION STANDARD #8509A FOR 3 PHASE, 4 WIRE WYE FORM 9S METER SOCKET.



LIPA 800 AMP TRANS "S"
CURRENT TRANSFORMER CABINET (NEMA 3R)
800 AMP., 600V AC RATED
CATALOG NUMBER TS-800-208(1) TS-800-208(3)
RTS-800(1) RTS-800(3)

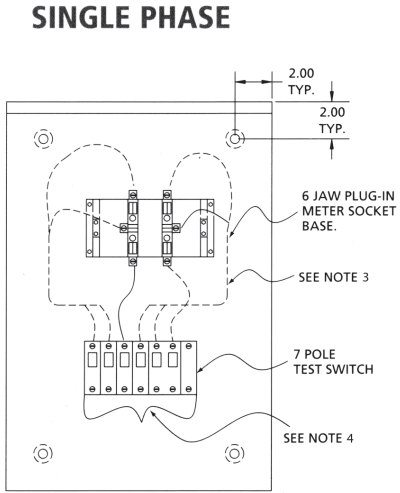


SERVICE EQUIPMENT

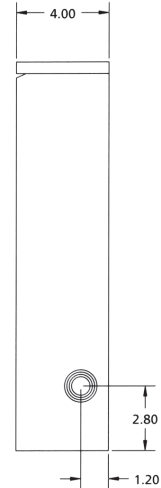


- CABINET SHALL BE RATED NEMA 3R AND SHALL BE CONSTRUCTED FROM CODE GAUGE GALVANIZED OR GALVANNEALED STEEL.
- BUS BAR SHALL BE SILVER OR TIN PLATED AND SHALL BE SIZED PER THE NEC.
- BUS BAR SHALL BE MOUNTED IN THE CABINET BY MEANS OF STANDOFF INSULATORS OR INSULATED MOUNTING BRACKETS. INSULATING MATERIAL SHALL CONFORM TO THE APPLICABLE SECTIONS OF UL 746 AND UL 94. CABINET SHALL BE UL APPROVED.
- THE RIGHT HAND SIDE OF THE CABINET SHALL ALLOW FOR LINE AND LOAD CABLES TO ENTER AND EXIT THROUGH THE BOTTOM OF THE CABINET. THIS SPACE SHALL ALLOW FOR THE CABLES TO MEET THE MINIMUM BENDING RADIUS TO NEAREST PHASE OR NEUTRAL BUS AS PER THE NEC.
- THE SHORT CIRCUIT WITHSTAND CAPABILITY OF THE CABINET ASSEMBLY SHALL BE A MAXIMUM OF 50,000 RMS SYMMETRICAL AMPERES.
- CABINET DESIGN SHALL HAVE PROVISIONS FOR A SOLID DOOR TO ALLOW FOR THE METER ENCLOSURE TO BE MOUNTED REMOTELY FROM THE CABINET.
- MANUFACTURER SHALL FURNISH AND INSTALL 1/2-13 STUDS WITH SPLIT LOCK WASHERS AND HEX NUTS FOR CT MOUNTING.
- USE ONLY MANUFACTURER'S APPROVED LUG PROVIDED. 2 LUGS/PER TERMINAL, EACH RATED FOR (1) 600 MCM-#4 OR (2) 250 MCM-#4 CABLE.
- ONLY FACTORY PREFABRICATED KNOCKOUTS ON THE ENCLOSURE SHALL BE USED.**
- PROVIDE PREWIRED TRANS "S" UNIT IN ACCORD WITH LIPA CONSTRUCTION STANDARD: #8908A FOR SINGLE PHASE, 3 WIRE FORM 4S, OR CONSTRUCTION STANDARD #8509A FOR 3 PHASE, 4 WIRE WYE FORM 9S METER SOCKET.

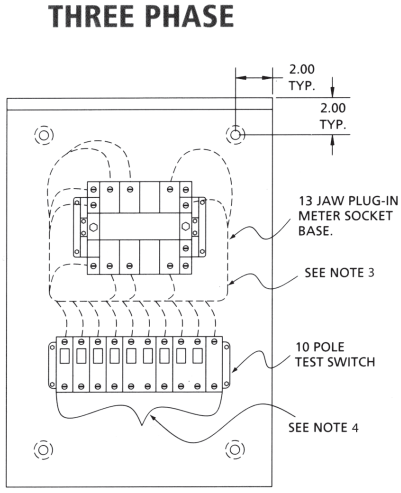
**LIPA METER SOCKET AND TEST SWITCH
(1 AND 3 PHASE)
30 AMP. CONT., 600V AC RATED (NEMA 3R)**



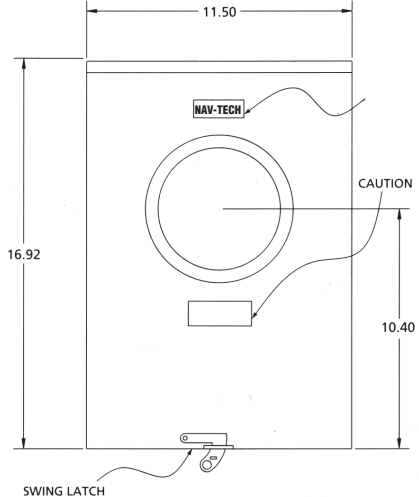
**FRONT VIEW NO COVER
MS7P-TS**



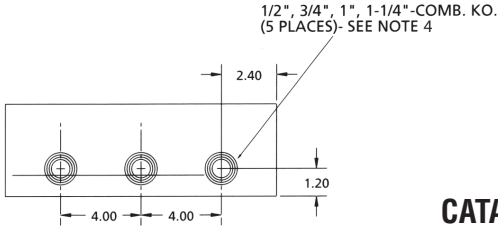
SIDE VIEW



**FRONT VIEW NO COVER
MS10P-TS**

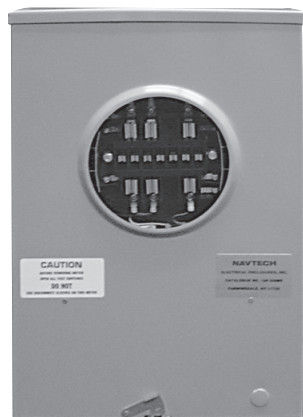


TYPICAL FRONT VIEW



TYPICAL BOTTOM VIEW

**CATALOG NUMBERS
MS10P-TS
MS7P-TS**



1. CABINET SHALL BE RATED NEMA 3R AND SHALL BE CONSTRUCTED FROM CODE GAUGE GALVANIZED OR GALVANNEALED STEEL.
2. **ONLY FACTORY PREFABRICATED KNOCKOUTS ON THE ENCLOSURE SHALL BE USED.**
3. STANDARD #8909A FOR 1 PHASE 3 WIRE FORM 45 METER SOCKET, AND STANDARD #8509A FOR 3 PHASE 4 WIRE WYE FORM 9S METER SOCKET, IS PROVIDED PREWIRED FROM TEST SWITCH TO METER BASE IN ACCORD WITH LIPA CONSTRUCTION.
4. WIRE PROVIDED AND INSTALLED BY CONTRACTOR.



ORANGE & ROCKLAND EQUIPMENT



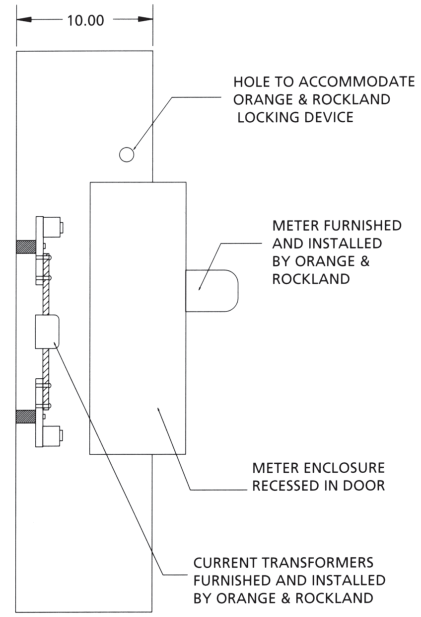
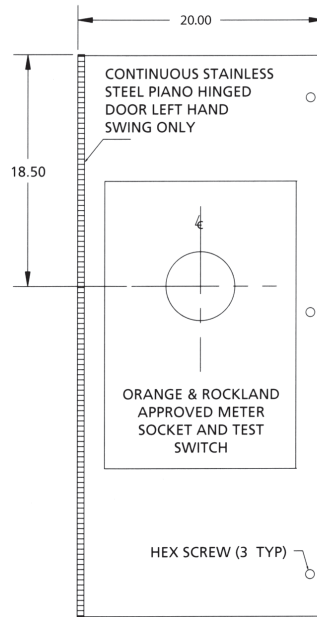
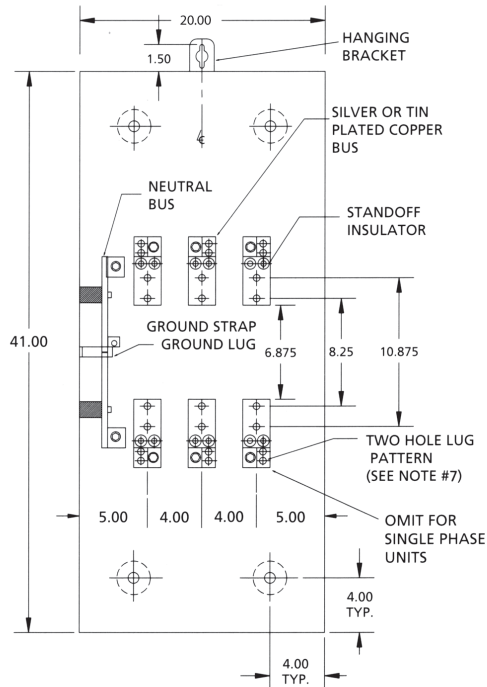
O & R Spec.	Navtech Cat. No	Size Description	Volts	Amps	List Price
TRANS-S	TS-400-208(1)OR	41x20x10	240	400	\$1,670.00
TRANS-S	TS-400-208(3)OR	41x20x10	240	400	1,830.00
TRANS-S	TS-800-208(1)OR	48x24x10	240	800	1,990.00
TRANS-S	TS-800-208(3)OR	48x24x10	240	800	2,260.00
	MS7POR	7 PT. METER SOCKET		30 AMP (CONT)	620.00
	MS10POR	10 PT. METER SOCKET		30 AMP (CONT)	660.00



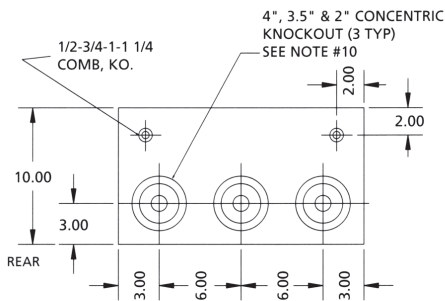
**ORANGE & ROCKLAND 400 AMP TRANS "S"
CURRENT TRANSFORMER CABINET (NEMA 3R)
200 AMP. 400 AMP., 240V AC RATED
CATALOG NUMBER: TS-400-208(1) O&R
TS-400-208(3) O&R**



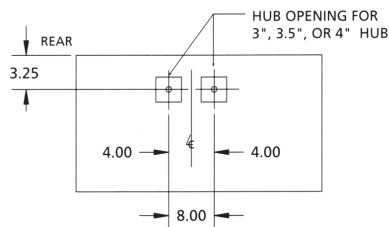
SERVICE EQUIPMENT



SIDE VIEW



BOTTOM VIEW



TOP VIEW

UL FILE #E211411 & E204067

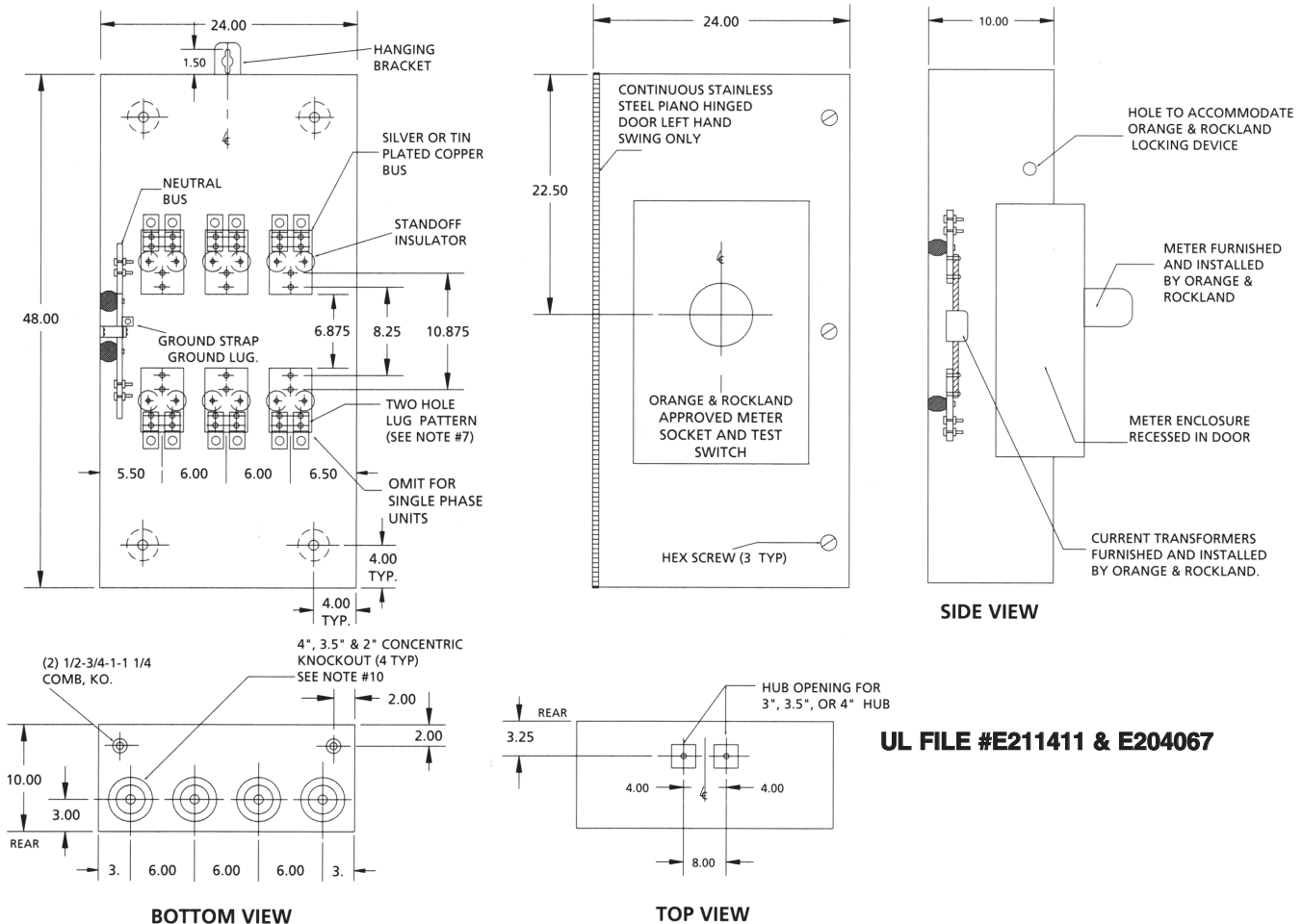
1. CABINET SHALL BE RATED NEMA 3R AND SHALL BE CONSTRUCTED FROM CODE GAUGE GALVANIZED OR GALVANNEALED STEEL.
2. BUS BAR SHALL BE MOUNTED IN THE CABINET BY MEANS OF STANDOFF INSULATORS OR INSULATED MOUNTING BRACKETS. INSULATING MATERIAL SHALL CONFORM TO THE APPLICABLE SECTIONS OF UL 746 AND UL 94. THE CABINET SHALL BE UL APPROVED.
3. BUS BAR SHALL BE SILVER OR TIN PLATED AND SHALL BE SIZED PER NEC.
4. THE RIGHT SIDE OF THE CABINET SHALL ALLOW THE LINE AND THE LOAD CABLE TO ENTER AND EXIT THROUGH THE TOP OR BOTTOM OF THE CABINET. THIS SPACE SHALL ALLOW FOR THE CABLES TO MEET THE MINIMUM BENDING RADIUS TO THE NEAREST PHASE OR NEUTRAL BUS AS PER NEC.
5. THE SHORT WITHSTAND CAPABILITY OF THE CABINET ASSEMBLY SHALL BE RATED AT 50,000 RMS SYMMETRICAL AMPERES.
6. MANUFACTURER SHALL FURNISH AND INSTALL 13 STUDS WITH SPLIT LOCK WASHERS AND HEX NUTS FOR CT MOUNTING.
7. USE ONLY MANUFACTURE'S APPROVED LUG PROVIDED. EACH LUG IS RATED FOR (1) 600 MCM-#44 OR (2) 250 MCM-#4 CABLES.
8. **ONLY FACTORY PREFABRICATED KNOCKOUTS ON THE ENCLOSURE SHALL BE USED.**
9. PROVIDED PREWIRED TRANS "S" UNIT IN ACCORD WITH ORANGE & ROCKLAND SPECIFICATIONS. CONTACT YOUR LOCAL NEW BUSINESS GROUP FOR INSTALLATION.
10. THESE DEVICES MAY BE UTILIZED ON 240 VOLT SERVICES AND 4 WIRE DELTA SERVICES ONLY.
11. USE #10 THHN STRANDED WIRE COLOR CODED. ALL WIRING IN ACCORDANCE WITH O&R SPECIFICATIONS.
12. ALL METER FORMS MUST CONFORM TO ORANGE & ROCKLAND SPEC. AND WILL BE LABELED AS SUCH.
13. ALL CABINETS WILL BE PROVIDED WITH A HOOK TO BE USED AS A DOOR STOP.
14. EACH UNIT WILL BE PROVIDED WITH A BARREL LOCK GUARD AND LOCK NUT.



**ORANGE & ROCKLAND 800 AMP TRANS "S"
CURRENT TRANSFORMER CABINET (NEMA 3R)
600 AMP. 800 AMP., 240V AC RATED
CATALOG NUMBER: TS-800-208(1) O&R
TS-800-208(3) O&R**



SERVICE EQUIPMENT



UL FILE #E211411 & E204067

- CABINET SHALL BE RATED NEMA 3R AND SHALL BE CONSTRUCTED FROM CODED GAUGE GALVANIZED OR GALVANNEALED STEEL.
- BUS BAR SHALL BE SILVER OR TIN PLATED AND SHALL BE SIZED PER NEC.
- BUS BAR SHALL BE MOUNTED IN THE CABINET BY THE MEANS OF STANDOFF INSULATORS OR INSULATED MOUNTING BRACKETS. INSULATING MATERIAL SHALL CONFORM TO THE APPLICABLE SECTIONS OF UL 746 AND UL 94. THE CABINET SHALL BE UL APPROVED.
- THE RIGHT HAND SIDE OF THE CABINET SHALL ALLOW FOR THE LINE AND THE LOAD CABLES TO ENTER AND EXIT THROUGH THE BOTTOM OF THE CABINET. THIS SPACE SHALL ALLOW FOR THE CABLES TO MEET THE MINIMUM BENDING RADIUS TO THE NEAREST BUS AS PER NEC.
- THE SHORT CIRCUIT WITHSTAND CAPABILITY OF THE CABINET ASSEMBLY SHALL BE RATED AT 50,000 RMS SYMMETRICAL AMPERES.
- MANUFACTURER SHALL FURNISH AND INSTALL _ 13 STUDS WITH SPLIT LOCK WASHERS AND HEX NUTS FOR CT MOUNTING.
- USE ONLY MANUFACTURER'S APPROVED LUG PROVIDED. TWO LUGS PER TERMINAL, EACH RATED FOR (1) 600 MCM-#4 OR (2) 250 MCM -#4 CABLE.
- ONLY FACTORY PREFABRICATED KNOCKOUTS ON THE ENCLOSURE SHALL BE USED.**
- PROVIDED PREWIRED TRANS "S" UNIT IN ACCORD WITH ORANGE & ROCKLAND SPECIFICATIONS. CONTACT YOUR LOCAL NEW BUSINESS GROUP FOR INSTALLATION.
- THESE DEVICES MAY BE UTILIZED ON 240 VOLT SERVICES AND 4 WIRE DELTA SERVICES ONLY.
- USE #10 THNN STRANDED WIRE CODED. ALL WIRING IN ACCORDANCE WITH O&R SPECIFICATIONS.
- ALL METER FORMS MUST CONFORM TO ORANGE & ROCKLAND SPEC. AND WILL BE LABELED AS SUCH.
- ALL CABINETS WILL BE PROVIDED WITH A HOOK TO BE USED AS A DOOR STOP.
- EACH UNIT WILL BE PROVIDED WITH A BARREL LOCK GUARD AND LOCK NUT.

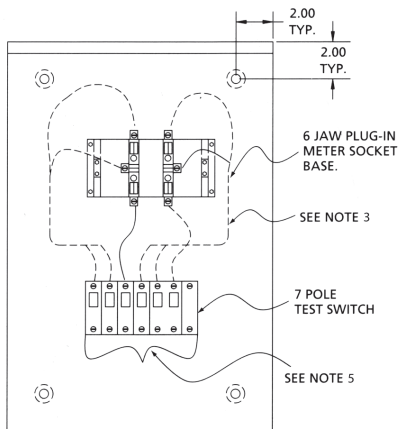


ORANGE & ROCKLAND METER SOCKET AND TEST SWITCH (1 AND 3 PHASE 30 AMP. CONT., 240V AC RATED (NEMA 3R))



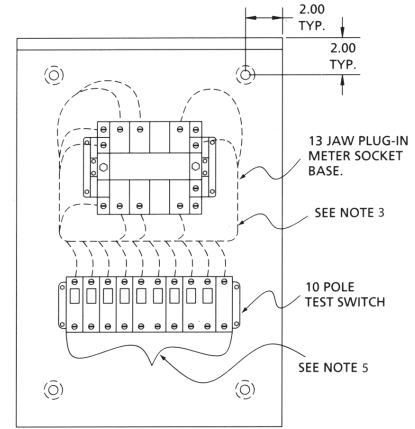
SERVICE EQUIPMENT

SINGLE PHASE

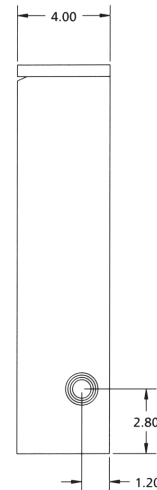


**FRONT VIEW NO COVER
MS 7P - OR**

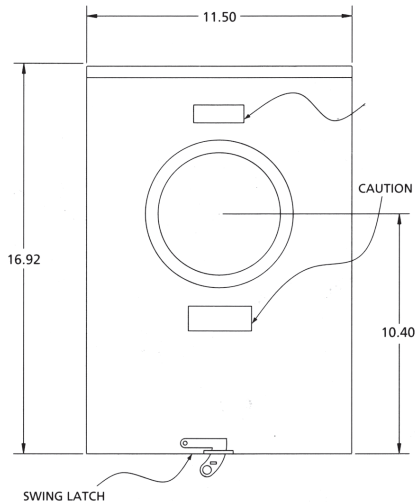
THREE PHASE



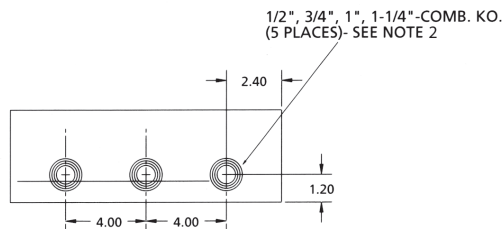
**FRONT VIEW NO COVER
MS 10P - OR**



SIDE VIEW



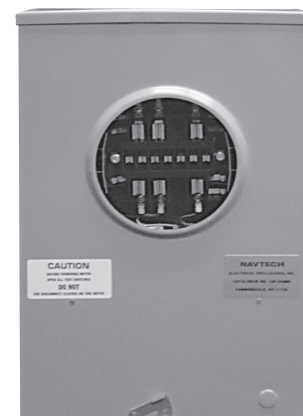
TYPICAL FRONT VIEW



TYPICAL BOTTOM VIEW

**CATALOG NUMBERS
MS10P-OR
MS7P-OR**

1. CABINET SHALL BE RATED NEMA 3R AND SHALL BE CONSTRUCTED FROM CODE GAUGE GALVANIZED OR GALVANNEALED STEEL.
2. **ONLY FACTORY PREFABRICATED KNOCKOUTS ON THE ENCLOSURE SHALL BE USED.**
3. PREWIRED TEST SWITCH METER SOCKET TO ORANGE & ROCKLAND SPECIFICATIONS
4. THESE DEVICES TO BE USED ON 240 VOLT SERVICES AND 4 WIRE DELTA SERVICES ONLY
5. WIRE PROVIDED AND INSTALLED BY CONTRACTOR.



SCREW COVER BOXES

Size	Price	Size	Price
6X6X3	\$10.00	8" DEEP	
4" DEEP		10X10X8	\$29.40
6X6X4*	8.42	12X12X8	29.26
8X6X4*	10.00	18X18X8	52.40
8X8X4*	10.54	24X12X8	86.00
10X10X4*	11.90	24X18X8	90.00
12X12X4*	15.26	24X24X8	98.86
18X12X4	30.60	30X24X8	72.09
18X18X4*	39.88	30X30X8	211.96
24X24X4*	83.56	36X36X8	260.00
6" DEEP		10" DEEP	
6X6X6*	10.54	18X18X10	79.00
8X8X6*	14.58	24X24X10	131.06
10X10X6*	17.72	36X24X10	234.90
12X12X6*	21.00	36X36X10	295.52
16X16X6	40.50	12" DEEP	
18X12X6	35.62	18X18X12	82.00
18X18X6*	43.86	24X24X12	138.06
24X24X6*	83.98	30X24X12	178.00
30X30X6	200.14	30X30X12	270.80
36X36X6	231.46	36X36X12	318.50
<ul style="list-style-type: none"> * Means stocked with and without KO'S All boxes 8" and above are stocked no KO'S All boxes ASA61 powder coat finish All boxes are available galv. no paint - special order 		48X48X12	600.00
		18" DEEP	
		30X30X18	464.00
		36X63X18	580.20

SCREW COVER WIREWAYS & FITTINGS

PULL BOXES & WIREWAY

2-1/2 x 2-1/2		
Description	Catalog #	Price
Length - 1'	T221	8.30
Length - 2'	T222	11.96
Length - 3'	T223	16.54
Length - 4'	T224	22.96
Length - 5'	T225	27.56
Connector	C2	3.60
End Wal	EW2	3.60
Panel Adapter	PA2	8.00
Elbow- 90	EL2-90	19.80
Elbow- 45	EL2-45	19.80
Tee	T2	23.92
Cross	CR2	46.00

8x8		
Description	Catalog #	Price
Length - 1'	T881	28.68
Length - 2'	T882	43.64
Length - 3'	T883	65.50
Length - 4'	T884	78.50
Length - 5'	T885	90.68
Connector	C8	5.96
End Wall	EW8	5.96
Panel Adapter	PA8	18.10
Elbow - 90	EL8-90	43.34
Elbow - 45	EL8-45	43.34
Tee	T8	46.66
Cross	CR8	67.50
Reducer 8 - 6	R8	29.00

4x4		
Description	Catalog #	Price
Length - 1'	T441	8.48
Length - 2'	T442	13.48
Length - 3'	T443	20.78
Length - 4'	T444	27.30
Length - 5'	T445	29.42
Connector	C4	3.00
End Wall	EW4	3.00
Panel Adapter	PA4	8.92
Elbow- 90	EL4-90	24.22
Elbow - 45	EL4-45	24.22
Tee	T4	29.88
Cross	CR4	27.50
Reducer 4-2	R4	24.00

10x10		
Description	Catalog #	Price
Length - 1'	TI010-1	38.40
Length - 2'	TI010-2	57.62
Length - 3'	TIO10-3	83.78
Length - 4'	TI010-4	104.64
Length - 5'	TIO10-5	135.84
Connector	CIO	9.26
End Wall	EWIO	9.26
Panel Adapter	PAIO	27.48
Elbow- 90	ELIO-90	55.12
Elbow- 45	ELIO-45	61.24
Tee	TIO	94.34
Cross	CRI0	121.00
Reducer 10-8	RIO	34.23

6x6		
Description	Catalog #	Price
Length - 1'	T661	17.08
Length - 2'	T662	24.08
Length - 3'	T663	30.76
Length - 4'	T664	40.72
Length - 5'	T665	45.28
Connector	C6	4.38
End Wall	EW6	4.38
Panel Adapter	PA6	12.42
Elbow - 90	EL6-90	28.00
Elbow- 45	EL6-45	28.00
Tee	T6	31.14
Cross	CR6	38.00
Reducer 6-4	R6	25.00

12x12		
Description	Catalog #	Price
Length - 1'	T1212-1	37.32
Length - 2'	T1212-2	77.54
Length - 3'	T1212-3	112.32
Length - 4'	T1212-4	138.40
Length - 5'	T1212-5	151.16
Connector	CI2	12.50
End Wall	EW12	12.50
Panel Adapter	PAI2	37.16
Elbow- 90	EL12-90	77.42
Elbow- 45	EL12-45	77.42
Tee	T12	113.22
Cross	CRI2	145.00
Reducer 12-10	R12	39.20

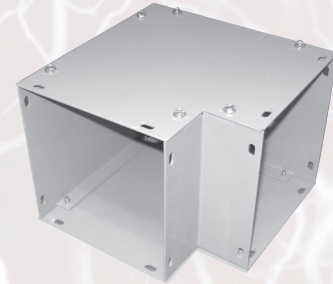
WIREWAY FITTINGS



45° Elbow



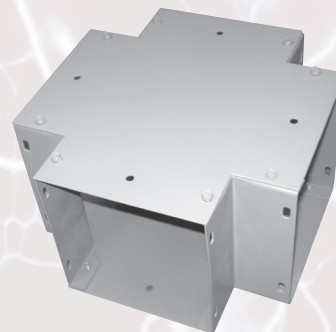
End Wall



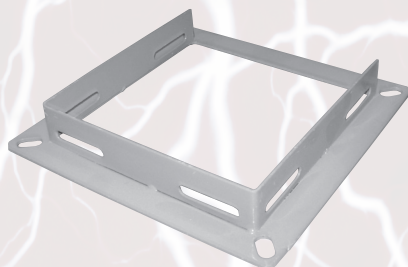
90° Elbow



Tee Fitting



Cross Fitting



Panel Adapter



Coupling

WEATHERPROOF SCREW COVER BOXES

PULL BOXES & WIREWAY

CAT NO.	Size	Price
WPSC664*	6x6x4	\$39.88
WPSC864	8x6x4	57.88
WPSC884*	8x8x4	60.70
WPSC10104*	10x10x4	72.52
WPSC12124*	12x12x4	86.70
WPSC18184	18x18x4	124.50
WPSC666	6x6x6	57.88
WPSC886*	8x8x6	65.58
WPSC10106	10x10x6	80.20
WPSC12126*	12x12x6	92.86
WPSC18186	18x18x6	131.02
WPSC24246	24x24x6	236.24
WPSC24248*	24x24x8	247.36
WPSC242412	24x24x12	350.00
WPSC303012	30x30x12	450.00
WPSC363612	36x36x12	710.00
WPSC484812	48x48x12	1,000.00



- Galvanized Steel
- Seams continuously welded
- Gasketed covers
- Stainless steel screws available
- Mounting ears
- Powder coat gray finish

* Are also stocked in Type 304 Stainless Steel

RAINTIGHT SCREW COVER BOXES

Size	Price
6x6x4	\$19.40
8x8x4	25.26
10x10x4	36.34
12x12x4	44.34
8x8x6	33.26
10x10x6	42.58
12x12x6	52.98
18x18x6	105.50
24x24x8	190.00



HINGE COVER BOXES

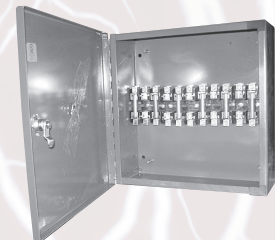
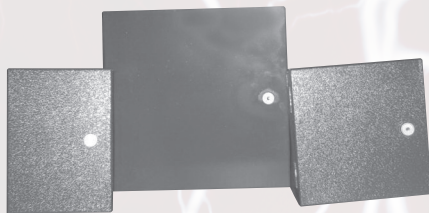
Size	Price
6x6x4	\$12.00
8x8x4	14.00
10x10x4	15.50
12x12x4	20.00
18x12x4	25.00
12x12x6	29.00
1 x12x6	26.00
18x18x6	48.00
24x24x8	68.00



PULL BOXES & WIREWAY

FIRE ALARM CUTOUT BOX

CAT NO.	Size	Description	List Price
FAB 864	8x6x4	3P 30 Amp Fuseholder	\$96.00
FAB 884	8x8x4	4P 30 Amp Fuseholder	140.00
RTFAB 884	8x8x4	4P 30 Amp Fuseholder 3R	200.00
FAB 12124	12x12x24	3P 60 Amp Fuseholder	220.00
FABD	10½ x 6 x 3½	2P 30 Amp Switch	175.00
FABD 3	10½ x 6 x 3½	3P 30 Amp Switch	216.00
FABD 360	14 x 8½ x 4	3P 60 Amp Switch	300.00



- Hinge cover box
- Cam Lock with Cat. 45 Key
- Mounted in box
 - a) 3-pole 250 volt fuse holder
 - b) solid removable copper neutral

- Electrostatically applied powder coat red finish
- Other sizes and configurations are available upon request
- All boxes and fuseholders



RAINTIGHT TROUGH



Size	Price
44-12	\$25.62
44-24	41.54
44-36	53.94
44-48	66.10
44-60	88.20
66-12	40.82
66-24	56.48
66-36	74.68
66-48	94.10
66-60	112.22
88-12	54.28
88-24	79.82
88-36	104.22
88-48	130.26
88-60	156.86

PULL BOXES & WIREWAY

Size	Price
44-12	\$48.00
44-24	85.00
44-36	112.00
44-48	132.00
44-60	165.00
66-12	76.00
66-24	114.00
66-36	150.00
66-48	184.00
66-60	216.00
88-12	158.00
88-24	178.00
88-36	210.00
88-48	230.00
88-60	260.00
1212-3	408.00
1212-5	620.00
1010-3	385.00
1010-5	550.00

WEATHERPROOF TROUGH



TYPE 4X ENCLOSURES STAINLESS STEEL TYPE 304

TYPE 4X STAINLESS STEEL JIC CLAMP COVER BOXES

- Without mounting panels
- Also available in type 316
- Other sizes available

Size	List Price
6" x 6" x 4"	\$220.00
8" x 8" x 4"	\$250.00
10" x 10" x 4"	\$280.00
12" x 12" x 4"	\$320.00
12" x 12" x 6"	\$350.00
18" x 18" x 6"	\$450.00



PULL BOXES & WIREWAY

TYPE 4X STAINLESS STEEL JIC CONTINUOUS HINGE ENCLOSURES

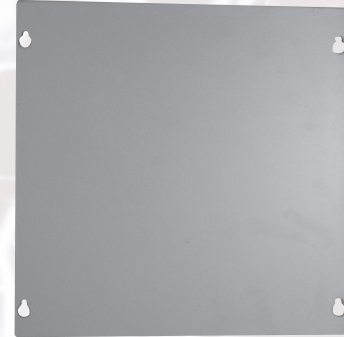
Size	List Price
6" x 6" x 4"	\$240.00
8" x 8" x 4"	\$275.00
10" x 10" x 4"	\$310.00
12" x 12" x 4"	\$350.00
12" x 12" x 6"	\$385.00
18" x 18" x 6"	\$500.00



COVERS ONLY WIREWAY

COVERS ONLY S.C. BOXES

Size	Price	Size	Price
CO221	\$4.80	CO 6x6	\$6.00
CO222	9.60	CO 8x8	7.20
CO223	13.20	CO 8x6	6.60
CO224	15.84	CO 10x10	8.40
CO225	18.00	CO 12x12	9.60
L2-90	13.20	CO 16x16	22.80
L2-45	13.20	CO 18x12	26.40
T2	18.00	CO 18X15	27.60
CO441	6.00	CO 18X18	27.60
CO442	10.80	CO 24X12	30.00
CO443	13.20	CO 24X18	57.60
CO444	15.60	CO 24x24	64.80
CO445	18.00	CO 30x18	86.40
L4-90	16.80	CO 30x24	94.80
L4-45	16.80	CO 30x30	100.80
T4	21.60	CO 36x24	110.40
CO661	8.40	CO 36x30	122.40
CO662	15.60	CO 36x36	132.00
CO663	19.20	CO 48x36	174.00
CO664	26.40	CO 48x48	223.20
CO665	28.80	CO N-205	36.00
L6-90	21.60	CO N-215	74.40
L6-45	21.60	CO N-484	130.80
T6	31.20	CO RTN-205	43.20
CO881	14.40	CO RTN-215	132.00
CO882	27.60	CO RTN-484	240.00
CO883	34.80	CO WP 6x6	16.80
CO884	42.00	CO WP 8x8	24.00
CO885	50.40	CO WP 10x10	30.00
L8-90	40.80	CO WP 12x12	38.40
L8-45	40.80	CO WP 18x18	52.80
T8	43.20	CO WP 24x24	96.00
CO1010-1	19.20	CO WP 36x36	132.00
CO1010-2	31.20		
CO1010-3	50.40		
CO1010-4	57.60		
CO1010-5	66.00		
L10-90	54.00		
L10-45	54.00		
T10	64.80		
CO1212-1	21.60		
CO1212-2	44.40		
CO1212-3	60.00		
CO1212-4	72.00		
CO1212-4	90.00		
CO 1212-5	50.40		
L12-90	62.40		
L12-45	62.40		



PULL BOXES & WIREWAY

GANG BOXES 1 5/8" deep (1/2" & 3/4" knockouts)



CAT NO.	Length	Cubic Inch Capacity	Knockouts Sides	Knockouts Ends	Knockouts Bottom	List Price
2G 1-5/8	7	46.0	8	4	4 2	\$6.58
3G 1-5/8	8 7/8	58.5	10	4	6 4	8.34
4G 1-5/8	10 5/8	71.0	12	4	6 4	11.62
5G 1-5/8	12 1/2	84.0	14	4	6 4	18.72
6G 1-5/8	14 1/4	95.0	16	4	6 4	32.90
7G 1-5/8	16 1/16	108.5	18	4	6 4	55.20
8G 1-5/8	17 7/8	122.0	20	4	6 4	60.96
9G 1-5/8	19 3/4	133.5	22	4	6 4	82.80

GANG BOXES & COVERS

GANG BOXES 2 1/2" deep



AVAILABLE IN BOTH 1/2-3/4 AND 3/4-1 KO CONFIGURATIONS

CAT NO.	Length	Cubic Inch Capacity	Knockouts Sides	Knockouts Ends	Knockouts Bottom	List Price
2G 2-1/2	7	71.0	8	4	4 2	\$8.86
3G 2-1/2	8 7/8	90.5	10	4	6 4	11.38
4G 2-1/2	10 5/8	111.8	12	4	6 4	18.98
5G 2-1/2	12 1/2	128.7	14	4	6 4	32.20
6G 2-1/2	14 1/4	148.2	16	4	6 4	56.36
7G 2-1/2	16 1/16	169.5	18	4	6 4	73.60
8G 2-1/2	17 7/8	188.8	20	4	6 4	92.00
9G 2-1/2	19 3/4	208.8	22	4	6 4	109.26



RAISED COVERS



1/2" RAISED COVERS

Part#	# of Gangs	Cubic Inch	Description	Length Capacity	List Price
2G-1/2	2	8.1	Fits 2 Gang Box	7	\$4.60
3G-1/2	3	11.7	Fits 3 & 2 Gang Box	8-13/16	5.76
4G-1/2	4	14.9	Fits 4 & 3 Gang Box	10-5/8	6.44
5G-1/2	5	17.5	Fits 5 & 4 Gang Box	12-7/16	8.86
6G-1/2	6	20.4	Fits 6 & 5 Gang Box	14-1/4	18.72
7G-1/2	7	24.1	Fits 7 & 6 Gang Box	16-1/16	35.42
8G-1/2	8	26.9	Fits 8 & 7 Gang Box	17-7/8	43.64
9G-1/2	9	31.8	Fits 9 & 8 Gang Box	19-11/16	50.60

3/4" RAISED COVERS

Part#	# of Gangs	Cubic Inch	Description	Length Capacity	List Price
2G-3/4	2	11.2	Fits 2 Gang Box	7	\$4.02
3G-3/4	3	17.1	Fits 3 & 2 Gang Box	8-13/16	4.72
4G-3/4	4	21.6	Fits 4 & 3 Gang Box	10-5/8	6.32
5G-3/4	5	26.2	Fits 5 & 4 Gang Box	12-7/16	8.86
6G-3/4	6	30.5	Fits 6 & 5 Gang Box	14-1/4	13.80
7G-3/4	7	36.1	Fits 7 & 6 Gang Box	16-1/16	24.16
8G-3/4	8	41.3	Fits 8 & 7 Gang Box	17-7/8	33.36
9G-3/4	9	46.3	Fits 9 & 8 Gang Box	19-11/16	42.56

1" RAISED COVERS

Part#	# of Gangs	Cubic Inch	Description	Length Capacity	List Price
2G-1"	2	16.2	Fits 2 Gang Box	7	\$4.00
3G-1"	3	23.4	Fits 3 & 2 Gang Box	8-13/16	5.00
4G-1"	4	29.8	Fits 4 & 3 Gang Box	10-5/8	5.60
5G-1"	5	35.00	Fits 5 & 4 Gang Box	12-7/16	7.70
6G-1"	6	40.8	Fits 6 & 5 Gang Box	14-1/4	18.00
7G-1"	7	48.2	Fits 7 & 6 Gang Box	16-1/16	30.80
8G-1"	8	53.8	Fits 8 & 7 Gang Box	17-7/8	50.00
9G-1"	9	63.2	Fits 9 & 8 Gang Box	19-11/16	54.00

GANG BOX COLLARS (1/2" & 3/4" knockouts)



GANG BOX COLLARS 2 5/8" deep

Part#	Length	Cubic Inch Capacity	Knockouts Sides	Knockouts Ends	List Price
COLL158-2	7	46.0	8	4	\$13.48
COLL158-3	8 7/8	58.5	10	4	15.94
COLL158-4	10 5/8	71.0	12	4	16.34
COLL158-5	12 1/2	84.0	14	4	21.58
COLL158-6	14 1/4	95.0	16	4	37.28
COLL158-7	16 1/16	108.5	18	4	58.92
COLL158-8	17 7/8	122.0	20	4	67.46
COLL158-9	19 3/4	133.5	22	4	80.96

GANG BOXES & COVERS

GANG BOX COLLARS 2 1/2" deep

Part#	Length	Cubic Inch Capacity	Knockouts Sides	Knockouts Ends	List Price
COLL212-2	7	71.0	8	4	\$15.94
COLL212-3	8 7/8	90.5	10	4	20.24
COLL212-4	10 5/8	111.82	12	4	22.72
COLL212-5	12 1/2	128.7	14	4	30.54
COLL212-6	14 1/4	148.2	16	4	53.98
COLL212-7	16 1/16	169.5	18	4	69.60
COLL212-8	17 7/8	188.8	20	4	83.80
COLL212-9	19 3/4	208.8	22	4	98.08



FLAT BLANK COVERS

Part#	# of Gangs	Description	Length Capacity	List Price
COVFL-2	2	Fits 2 Gang Box	7	\$1.38
COVFL-3	3	Fits 3 Gang Box	8 13/16	2.08
COVFL-4	4	Fits 4 Gang Box	10 5/8	2.82
COVFL-5	5	Fits 5 Gang Box	12 7/16	4.14
COVFL-6	6	Fits 6 Gang Box	14 1/4	8.06
COVFL-7	7	Fits 7 Gang Box	16 1/16	14.96
COVFL-8	8	Fits 8 Gang Box	17 7/8	18.40
COVFL-9	9	Fits 9 Gang Box	19 11/16	20.70



TOGGLE SWITCH COVERS

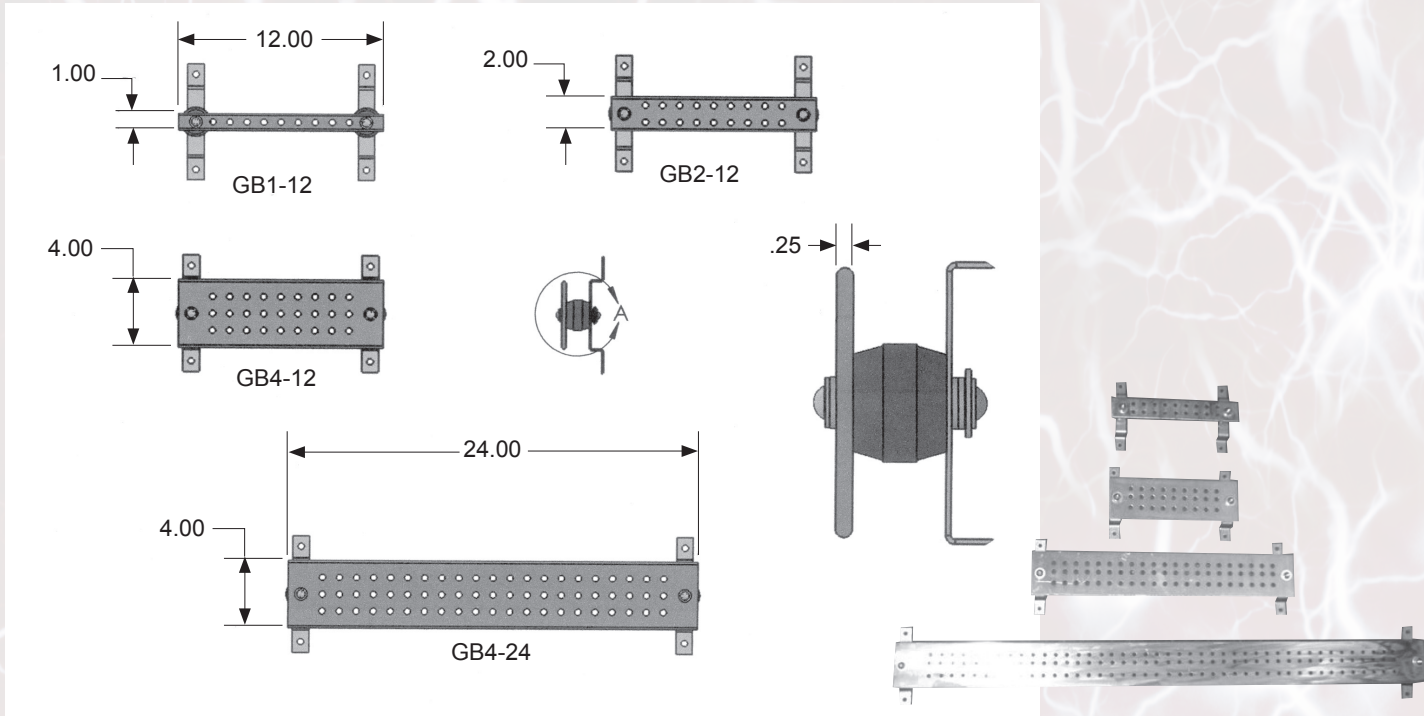
Part#	# of Gangs	Description	Length Capacity	List Price
COVTS-2	2	Fits 2 Gang Box	7	\$3.16
COVTS-3	3	Fits 3 Gang Box	8 13/16	4.28
COVTS-4	4	Fits 4 Gang Box	10 5/8	5.82
COVTS-5	5	Fits 5 Gang Box	12 7/16	7.60
COVTS-6	6	Fits 6 Gang Box	14 1/4	8.46
COVTS-7	7	Fits 7 Gang Box	16 1/16	18.98
COVTS-8	8	Fits 8 Gang Box	17 7/8	22.78
COVTS-9	9	Fits 9 Gang Box	19 11/16	27.84



GANGBOX PARTITIONS

Part#	Description	List Price
PART158-SQ	Fits 1 5/8" Deep Gang Box - No Rise on Cover-Flat	\$2.50
PART158-12	Fits 1 5/8" Deep Gang Box - w/ 1/2" Cover Rise	4.25
PART158-34	Fits 1 5/8" Deep Gang Box - w/ 3/4" Cover Rise	4.25
PART212-SQ	Fits 2 1/2" Deep Gang Box - No Rise on Cover-Flat	3.00
PART212-12	Fits 2 1/2" Deep Gang Box - w/ 1/2" Cover Rise	4.90
PART212-34	Fits 2 1/2" Deep Gang Box - w/ 3/4" Cover Rise	5.60

GROUNDING BUSBARS



Part#	Description	List Price
GB1-6	1" x 6" x 1/4" CU GROUND BAR	\$46.00
GB1-12	1" x 12" x 1/4" CU GROUND BAR	\$56.00
GB2-6	2" x 6" x 1/4" CU GROUND BAR	\$50.00
GB2-8	2" x 8" x 1/4" CU GROUND BAR	\$60.00
GB2-12	2" x 12" x 1/4" CU GROUND BAR	\$76.00
GB4-12	4" x 12" x 1/4" CU GROUND BAR	\$96.00
GB4-18	4" x 18" x 1/4" CU GROUND BAR	\$170.00
GB4-24	4" x 24" x 1/4" CU GROUND BAR	\$180.00

Our new Grounding Busbars are insulated ground bus mounting plates. The type 110 alloy solid copper ground bars are 1/4" thick and stand 2-1/2" from the backboard or wall. The 12" accepts 9 lugs and the 24" accepts 21 lugs. Accepting lugs with either 3/4", 1" or 1-3/4" centers. Any lug with 3/8" bolts may be used.

Each BUSBAR consists of:

- 1 - Busbar
- 2 - (2) Insulators
- 3 - (2) Standoff Brackets
- 4 - (4) Stainless Steel Bolts
- 5 - (4) Lock Washers
- 6 - (4) Flat Washers



GROUNDING BUSBARS

ACCESSORIES

Item	List Price
Barrel Lock Guard	\$12.00
Minute Meter Guard	32.00
Cam Lock Cat 45 Key	16.00
Key Locking Latch	60.00
Padlockable Handle	40.00
1" Hex Glastic Insulators 1/4"	7.00
1-1/4" Hex Glastic Insulators 1/4"	8.00
Round Glastic Insulators 3/8"	10.00
1-1/4" Hub	5.45
1-1/2" Hub	5.45
2" Hub	11.00
3" Hub	27.00
3-1/2" Hub	34.00
4" Hub	38.00
3" Top Cover Plate	15.00
5" Top Cover Plate	20.00



Barrel Lock Guard



Minute Meter Guard



Cam Lock Cat 45 Key



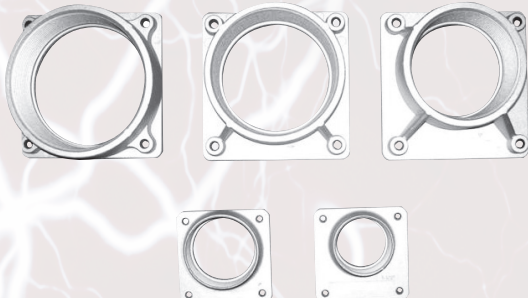
Key Locking Latch



Padlockable Handle



Glastic Insulators



Hubs



Top Cover Plate