

RACK-A-TIERS®

SPECIALTY ELECTRICAL TOOLS

WORK SMARTER NOT HARDER



**MANY
NEW PRODUCTS
INSIDE!**

2012/2013 PRODUCT CATALOG

Table of Contents:

WIRE MANAGEMENT TOOLS

Rack-A-Tiers – Wire Dispenser	3
Hooker – Pipe Wrench Adapter	3
EZ Roll – Wheeled Wire Dispenser	4
Tug Wise – Reel Dispenser	4
Cable Caddy, Carts, Dolly, Truck, & Data Carts	5
Plate Vise & Wire Pull Pro	5
Reel Mac 60, 70, 80 & Spindles	6
Ratchet Reel Mac	6
Mac Line Racks & Reels	7
Easy Stripper	8
Copper Wire Stripper	8
Pocket Kart – Reel Carrying Tool	9
Gorilla Nuts – Cushion Grip Connectors	9
Dryconn – Waterproof Connectors	9

WIRE PULLING AND FISHING

All-American Pull Buddy	10
LB Wire Guide	10
Wire Vortex	10
Ropematic – Rope and Fish Tape Puller	11
Snatch Strap – Wire Puller	11
Power Pull-It	11
Magnepull & Magnespot	12
Flex Puller	13
Coneheads	13
Laserline – Line Dart Shooter	13
Plastic Coated Fiberfish, Glowfish & Attachments	14
Fibersnakes & Contractor Packs	15
Bag Pipers	15

TOOL BAGS AND OTHER STUFF

Combination Tool Belt & Pouch.....	16
Butt Pouches	17
Lift-n-Lok Tool Box	17
Staple Shark	18
Bigg Lugg	18
Carpenter's Pencil.....	18
Felt marker.....	18
Hammer.....	18
Croc's – Needle Nose Wire Stripper	19
V-Cutter – Electrician's Wire Stripper Attachment	19
Bend-All – Cable Bender	19
Racksy Knee Pads	20
Booty Pack – Disposable Boot Covers, Gloves, Respirators	20
Gopher LED Flashlight	20
Bolt Template	20
Panel Buddy – Knockout Kit	21
P. S. Knight Electrical Code Books	21
DeWALT Professional Reference Series	21
Owik Lok – Locking Plug	22
Sluggo-Ox	22
Piper - Conduit Tracking System	23
Nut Blaster – Wire Connector Tools	23

Breaker Lok	23
-------------------	----

HOLE CUTTING

Mega TCT Hole Saws	24
Heavy Duty TCT Masonry Hole Saws	24
Carbide Tipped Steel Cutters	25
Multi Bits (Step Drills)	25
The Javelin - Drilling Extension Kit	25
Bumper Balls & Flexible Auger Bits	26
Auger Bit File	27
Nail Chipper, Ship Auger, Tri-Cut, Standard & Overdrive	27
Multi-Function Hole Cutters & Accessories	28
Driller's Dust Bowl	29
Exploding Garbage Can	29

COLORED RACKY BITS

#0 Yellow Square	30
#1 Green Square	30
#2 Red Square	30
#3 Black Square	30
#4 Orange Square	30
#1 Light Blue Phillips	30
#2 Blue Phillips	30
4" & 6" Double Ended Bits – #2 Phillips & 1/4 slot	30
4" & 6" Double Ended Bits – #1 & #2 Square Drive	30
Robertson® Impact Driver Bits	30
Magnetic Hex Bits	30
Lockhard #1 Square with Wings 4" & 6"	31
Picquic Screwdrivers	31
ProGrabIt Kit – Damaged Screw Remover	31

PIPE AND CONDUIT BENDING

Hoppy Bender – Conduit Pipe Bender	32
Pipe Viper – Cold PVC Pipe Bender	33
PVC Bend-It.....	33

LEVELS AND TESTERS

Laser Plumb Bob	34
Straight Shot Level	34
Jet level	34
Plug Master Circuit Tester	35
Circuit Siren	35
AC Sensors	35

CONNECTORS, ETC

Cable Protection Systems	36
Racky Strap – Utility Strap	36
Handi Hoop	36
Stud Buddies – Steel Stud Bushings	36
KOK Series – 1/2" to 2" Plastic Knock Out Fillers	37
Level Jack – Low Voltage Datacom Mud Ring	37
Rapid Fire Connectors – 1/2" & 3/4"	37
Tom Two Way 1/2" Connectors	37

SCREWS AND OTHER FASTENERS

Robertson® Screws and Fasteners	38
Flat Washers, Hex Nuts & Bolts, and Anchors	39

RACK-A-TIERS

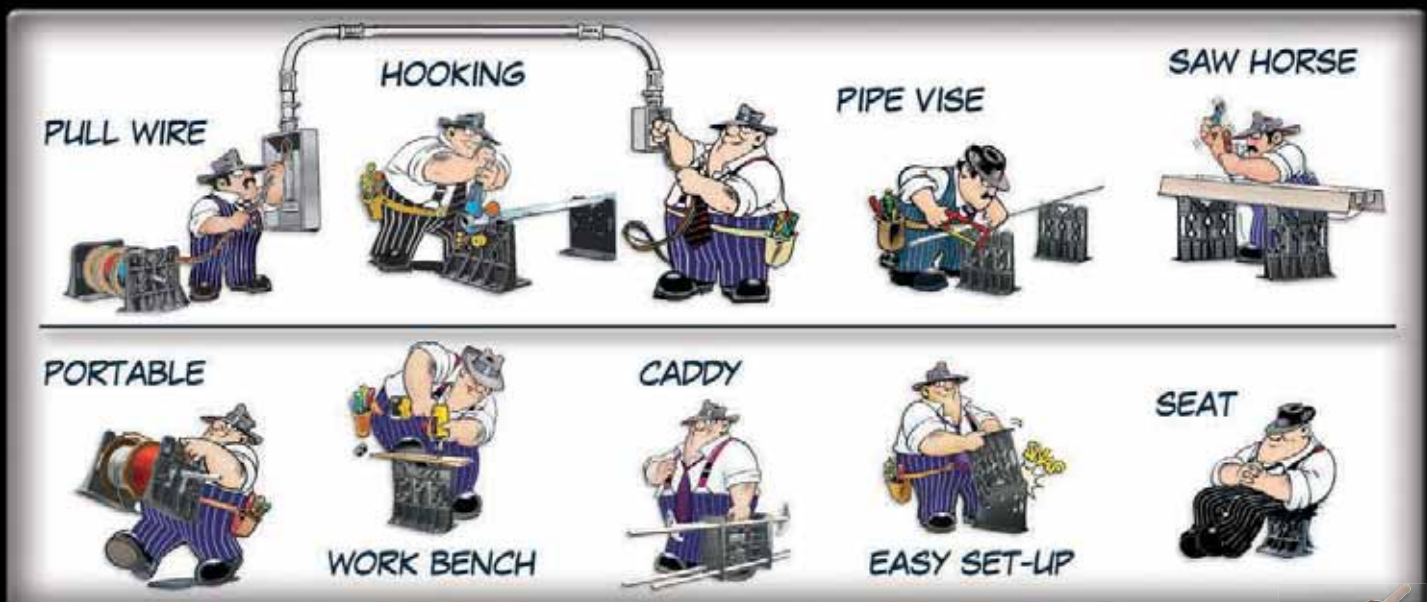
THE ONE TOOL THAT DOES IT ALL

THE RACK-A-TIERS WIRE DISPENSER IS THE ONE TOOL THAT DOES IT ALL. IT'S NO SURPRISE THAT WE'VE SOLD HUNDREDS OF THOUSANDS OF THEM TO ELECTRICIANS EVERYWHERE. THIS TOOL IS VERSATILE, WATERPROOF, RUSTPROOF, RUGGED, AND VERY RELIABLE. IT EVEN LOCKS TOGETHER TO MAKE A COMFORTABLE SEAT!

- WIRE PULLING
- PIPE VISE
- SAW HORSE
- WORKBENCH
- CADDY
- SEAT
- PORTABLE
- VERSATILE
- RELIABLE
- RUGGED
- INTERLOCKING PAIRS
- EASY TO USE



PART# 11455

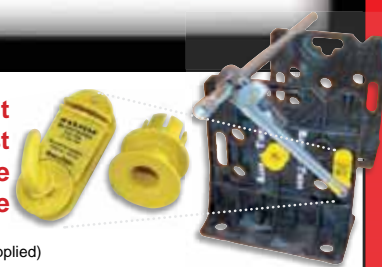


Every RACK-A-TIER needs a Hooker!

The Hooker Pipe Wrench Adaptor

"Turn your Rack-A-Tiers into a Pipe Vise"

Light
Fast
Simple
Inexpensive



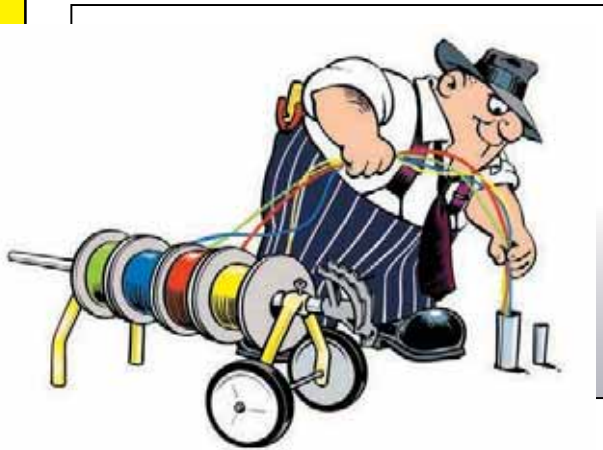
Part# 10455

NOTE: REQUIRES PIPE WRENCH 18" RIDGID® or equivalent fit. (not supplied)

E-Z ROLL Wire Rack

The ultra compact/collapsible wheeled wire dispenser!

When you're ready to pull wire, wheel the e-z roll into position and dispense wire directly from your pipe bender or 1" EMT.



Features:

- Rigid Steel Construction
- Light-weight Design
- Durable 'Caution Yellow' Finish
- Compact (fits in any job box)
- 150 lb. Load Tested
- Holds Reels up to 18"

Part# 55455

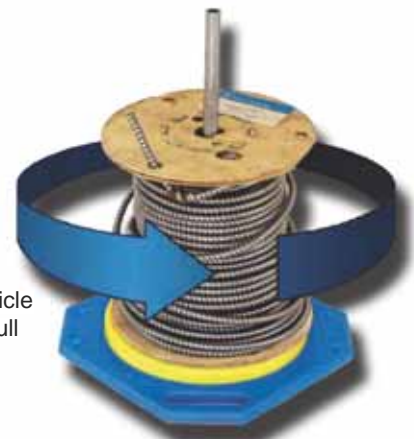
Collapsible for easy storage & handling

TUG WISE

Ever had a jack-stand kick out on you?

An accident like that can cost you a lot of time, and towing a clunky reel trailer behind your vehicle is no faster! Why risk it? Simply attach the Tug-Wise to the base of your reel and be ready to pull cable instantly.

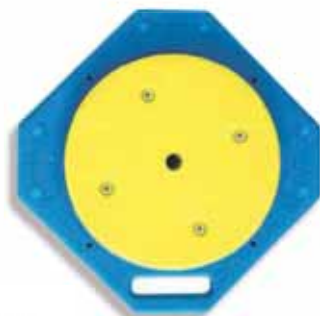
Part# 11931 - Standard
Part# 11932 - Deluxe



Standard Model

Features:

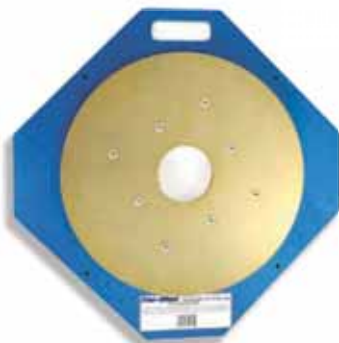
- Size: 15" x 15"
- Handles up to 1000 lbs reels
- Works with wooden and plastic reels



Deluxe Model

Features:

- Size: 21.5" x 21.5"
- Handles up to 2000 lbs reels
- Made of 3/8" thick aluminum alloy
- Built to handle anything



3 Easy Steps:

- Screw to base of reel.
- Flip reel over.
- Pull Wire!

Cable Truck & Cable Caddy

- Constructed of rugged 1" steel tubing.
- Both are 43" tall with 7" rubber wheels.
- Both can accommodate spools up to 16" wide on solid steel 1/2" axles.
- Cable Caddy features 6 axle positions for unlimited versatility.
- Cable Truck has 4 axle positions and a solid steel plate for transporting material.



Part# **CT1100**
Cable Truck



Part# **CC1200**
Cable Caddy

Cable Dolly

- Cable Dolly features 8–12" wide spindles to accommodate a wide assortment of reel sizes. Durable locking casters are rated up to 1200 lb.

Part# **CD3000**
Made to order

- Cable Dolly Jr. features 4–12" wide spindles. Extensions also available.

Part# **CD3100** (Not Shown)

- 8 piece spindle extension set with tube connectors. (17" extensions)

Part# **CD3000-EXT**



Cable Carts

- Comes with interchangeable 1" and 3/4" axles.
- Holds up to 30 spools of THHN.
- Vertical racks swing forward for easy loading.
- Space for plywood work table on top.

Dimensions: 43"H x 41 1/2"L x 28"W
Shipping weight: 150 lbs.

Part# **CC2000**
Cable Cart
Made to order



Part# **CC2000D**
Cable Cart - Data
Made to order



Part# **13355**

Made of solid steel!

Features:

- Weight: 3.9 lbs.
- Holds several lumber sizes including but not limited to: 1"x2", 2"x4", 2"x6" and 4"x4"
- Includes 12" Ruler



Common features:

Lifts material for easy:

- Cutting
- Drilling
- Measuring
- And Tightening

Tightly holds:

- Plastic & Metal Pipe
- Conduit, Unistrut, Rebar
- Lumber & Dowels
- And Much More!



Part# **13555**

Features:

- Weight: 14.5 lbs. each
- As a set can hold 1" to 6" conduit, up to 36" wire spools and up to 1,000 lbs.
- Sold separately



Makes your job faster, more accurate and MUCH SAFER!



REELMAC THE REAL JACK

Standard features:

- Self-lubricating Roller Bearings – no grease required
- Quick-action lock washer for fast positioning
- Fall Guard feature to reduce pinching
- One-bolt disassembly – no welding required for service

REEL MAC 60

Screw type telescoping reel jack for 26-56" diameter reels.



REEL MAC 70

Screw-type telescoping reel jack for 46 to 96" diameter reels.



REEL MAC 80

Heavy duty ratchet drive reel jack for reels up to 90" in diameter. Convenient, detachable ratchet handle stores in base when not in use.



REEL MAC SPINDLES

Used with Reel Mac reel jacks. (Sold separately)



REEL MAC & JACK-A-TIER				
Description	Part No.	Reel Diameter	Capacity	Weight
Reel Mac #60	11860	26-56"	2500lb.	27 b.
Reel Mac #70	11870	46-96"	2500lb.	46 b.
Reel Mac #80	11880	up to 90"	3750lb.	99 b.
Jack-A-Tiers #75	11875	46-92"	2500lb.	34 b.

Corresponding SPINDLES				
Description	Part No.	Dimensions	Capacity	Weight
#61	11861	2 3/8" x 62"	5000lb.	39lb.
#71	11871	2 3/8" x 76"	5000lb.	47lb.
#81	11881	3 1/2" x 100"	7500lb.	119 b.
#71	11871	2 3/8" x 76"	5000lb.	47lb.

Use these charts to select the right Reel Mac, Jack-A-Tiers or spindle for your needs.

RATCHET REEL MAC

Standard features:

- Self-lubricating bearings
- Built-in handle storage
- Patent-pending safety head
- Use with Reel Mac Spindles

Part# 11885



Weight: 28 lb/12.7 Kg

MID-RANGE RATCHET REEL STAND

- Ratchet design allows for easy lifting
- 2,500 lbs. capacity each
- 17.5" to 28" lifting range
- up to 55" diameter reels
- Designed for use with #350 & #500 wire reels



**KEEPS SPINDLES
SECURELY IN PLACE**

THE MAC LINE

Caddy Mac features:

- Accommodate wide range of spool sizes.
- Wire guides for smooth feeding from the spool.
- Patented spindle locking system - spindles stay put during transportation.
- 1/4" solid spindles are attached to Caddy Mac cart... no loose pieces.
- Spindles swing out to set position for convenient loading of wire spools.
- Spindles can be easily removed for the occasional use of larger spools.
- Spindles store in special loops... will not fall out even during transportation.
- Large 10" wheels

MAC RACK 1



- 1,000 lb load capacity
- Eight bins of storage
- Arms fold easily with plunger release

Part# 11917

CADDY MAC #1

Part# 11901



Number of Spools	Max Spool Dia.	Load Capacity	Weight	Width	Additional Features
8-#10 awg. or 12-#12 awg.	7.5 in 19 cm	200 b. 90 kg.	50 lb. 23 kg.	26 in 66 cm	Transports spools on spindles and works as a dolly. Wire is dispensed while laying flat.



CADDY MAC #2

Part# 11902

Number of Spools	Max Spool Dia	Load Capacity	Weight	Width	Additional Features
16-#10 awg. or 24-#12 awg.	7.5 in 19 cm	400 lb. 180 Kg.	64 b. 29 kg.	26 in 66 cm	Folds up for compact storage



CADDY MAC #4

Part# 11904

Capacity	Weight	Width	Additional Features
6-500' spools - 8" diameter 6-2,500' spools - 16" diameter	67 lb. 30.5 kg.	27 in 69 cm	A large capacity cart, dispenses wire while laying flat.



Spool MAC A REEL TRANSPORTER

Part# 11900



Max Reel Width	Max Spool Dia.	Reel Capacity	Weight	Width	Additional Features
25 in 63.5 cm	40 in 101 cm	350 lb. 160 kg.	80 lb. 36.4 kg.	31.5 in 80 cm	All steel frame, easy set-up for cable dispensing. Compact storage.

Made in USA

COPPER WIRE STRIPPER

RECOVER COPPER WIRE & ALUMINUM QUICKLY AND EASILY WITH THESE MONEY MAKING MACHINES



Model CWS-2

Model CWS-2

Part# 47200

- All aluminum frame
- Strips 14 - 500 AWG
- Strip solid core or stranded wire
- Hardened one piece blade
- Blade made from tool steel
- 1/2 HP motor with 56c frame
- Blade easily re-sharpened
- Fully adjustable wire guide
- Strips 120 feet per minute
- Bench model - Anti-slip base

Model CWS-1

Part# 47100

- All aluminum frame
- Strips wire from 14AWG - 3"
- Strips NMSC cable 10 - 14 AWG
- Strip solid core or stranded wire
- Hardened one piece blade
- Blade made from tool steel
- 3/4 HP motor with 56c frame
- Blade easily re-sharpened
- Fully adjustable wire guide
- Strips 120 feet per minute
- Bench model - Anti-slip base

Made in Canada

EasyStripper

Strip the cover off your scrap wire in minutes with the Easy Stripper! Increase your earnings on every single job you complete.

Don't return your copper wire with the cover still on. Remove the cover in minutes with the Easy Stripper and get 300% more money for your scrap wire. It's that simple!

- Less than 10% the price of a standard motorized wire stripper
- Powered by any normal power drill
- Get 300% more money for returning your wire uncovered
- Way EASIER and FASTER than using your knife!
- Environmentally friendly - no burning required

Tired of burning the rubber off your copper wire just for a few extra bucks? It makes a mess, but more importantly, it hurts the environment. Don't be that guy - use the Easy Stripper to strip your wire in seconds and get MORE MONEY for returning scrap wire!

Part# 47020

Blade Part# 47020B



Why does he make all the money?



Strips wire from 14 - 4/0 AWG



POCKET KART

Save your fingertips!



Use the Pocket Kart to carry wire reels of all sizes.

Features:

- Light weight
- Swivelling handle
- Folds up easy
- Fits in pouches
- Fits in pockets
- Holds up to 200 lbs

Part# 56000

GORILLA NUTS™

CUSHION GRIP WIRE CONNECTORS



FEEL THE TORQUE!

Amazing Torque



Superior Grip

Flexible Skirt



Part #-Blue/Gray

Part #-Red/Yellow

Part #-Orange/Blue

Box of 50 #KI68310

Box of 100 #KI68210

Box of 100 #KI68110

Canister of 300 #KI68230

Canister of 500 #KI68250

Gorilla Nuts™ Cushion Grip Wire Connectors

DRYCONN®

WATERPROOF CONNECTORS



Filled Connectors for Outdoor Use

Part #	Selling Unit	Wire Range
62110	Card of 6	22 — 12
62125	Bag of 25	22 — 12
62210	Card of 5	22 — 8
62225	Bag of 20	22 — 8
62300	Card of 3	14 — 6
62335	Bag of 50	14 — 6

Filled Connectors for Direct Bury Use

Part #	Selling Unit	Wire Range
10600	Card of 2	22 — 8
10666	Bag of 10	22 — 8
10999	Bag of 8	14 — 6
10444	Bag of 10	18 — 12
10555	Bag of 10	14 — 10



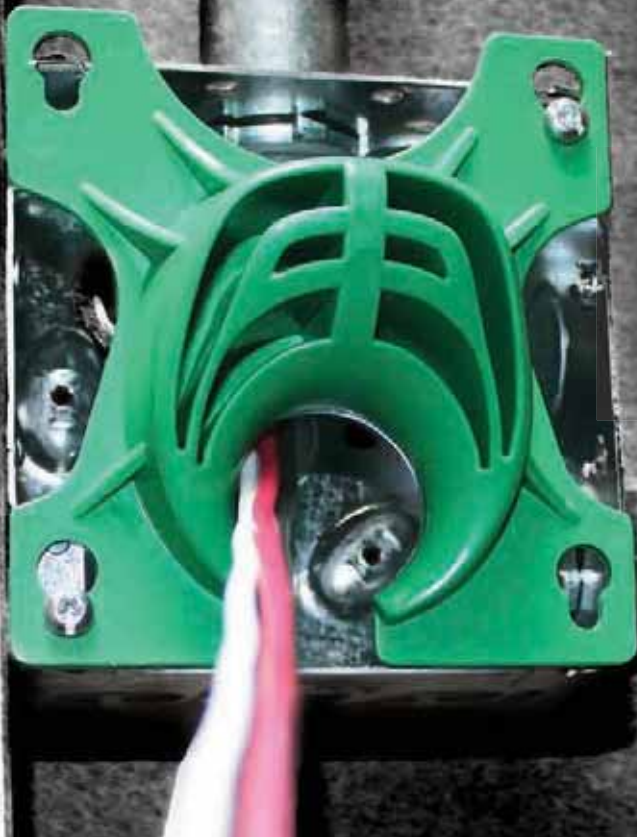
TRY THESE TOOLS WHEN YOU NEED AN EXTRA PAIR OF HANDS PULLING WIRE!

Wire Vortex

TIME SAVING WIRE PULLING GUIDE

- Protects wire from damage when pulling
- Can pull wire in all 4 directions
- Use for 4" standard shallow or deep boxes
- Built with durable, impact-resistant plastic
- Easy to slip on and off

Part# 40001



The All American Pull Buddy

'Shoehorns for your wire!'

- Reduces Time and Labour
- Reduces the chance of damaging wires
- Turns wire pulling into a one person job
- Why not protect the conductors on all your pulls?



Three Sizes Available:
1/2" 3/4" 1"

Part# 42050-1/2"
Part# 42075-3/4"
Part# 42100-1"
Part# 42000-Multi-Pack



LB WIRE GUIDE



THE LB WIRE GUIDE IS A "SHOE HORN" FOR 2" LB'S.

FEATURES

- FOR PVC LB FITTINGS AND IS ADAPTABLE TO MOST METAL LB'S
- FAST FOR ONE PERSON CONDUCTOR INSTALLATIONS
- INSTALLS IN TWO POSITIONS TO FIT BOTH "ENDS" OF THE LB



Part# 42200



ROPEMATIC PRO
THE SMART WAY TO PULL

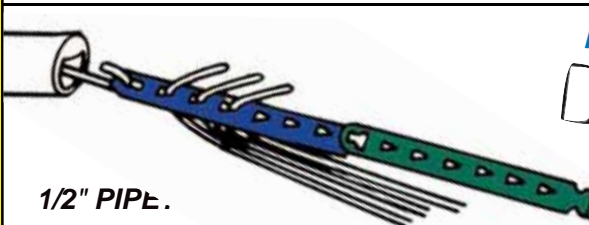


STOP hurting hands and wrists.
STOP breaking expensive fishtape.



- Can pull most ropes and fish tapes
- Pull more efficiently, faster & safer
- Saves an average of 30 minutes based on a 75' pull
- Use both hands ergonomically for maximum pulling strength without the pain

Part# 42400



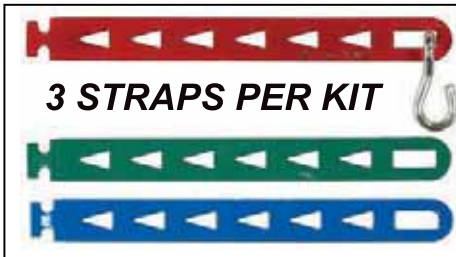
1/2" PIPE.
90° BENDS?
FITS EASILY!

Time is money and when you think about it, a lot of time is spent stripping, taping, and untaping wire for fishtape pulls. The SNATCH STRAP gives you back this time. By staggering the wire, you can pull more conductors with less effort. Plus SNATCH STRAPS can be daisy chained; you can easily drop wire groups at boxes along the pull. Color coded for easy circuit and phase identification.

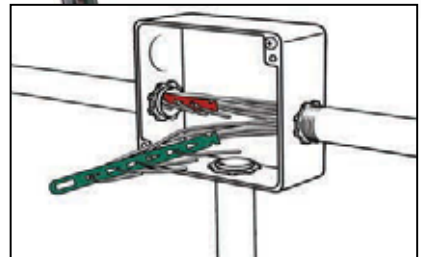
Part# 69455

**FAST ATTACHMENT
FOR CONDUIT PULLS**

SNATCH STRAP
WIRE PULLER



3 STRAPS PER KIT



No stripping or taping required

**POWER
PULLit®**



The powerful new way to pull wire without breaking a sweat!

Power Pull-it is a compact and portable wire pulling device that utilizes your cordless drill to efficiently pull wire, and dramatically reduce hand-pulling fatigue and injuries. Just attach the pull line to your drill, and let it do all the work for you. Made in the USA, Power Pull-it's sturdy construction includes a precision bearing assembly, and requires no anchors. Includes a spare line sleeve and tool pouch.

- Saves on labor costs
- Precision bearing assembly
- Sturdy construction
- No anchors required
- Reduces pulling fatigue and hand injuries



Part # 42500



Extremely powerful, yet delicate, magnetic wire snake for fishing wire through walls. It even works through insulation! This new version has a much stronger magnet and a smoother rolling surface.



Features

- Hand roller with powerful magnet and smooth finish to avoid damaging walls
- 10' ball chain included
- Flexible leader with magnet head
- Also makes a great stud finder

Mfg Note

Any fiber fish can easily be threaded onto the magnet head. This will help push through dense insulation and guide through fire-block drill holes.

Part# 42800

THE NEW MAGNESPOT HAS ARRIVED!



The Magnespot is a reference point locator that gives users complete self-assurance before drilling, cutting, or any other task you may previously had to do blindly.

Place the Magnespot Transmitter on the wall, ceiling, or floor that you need to drill. On the other side hold the Receiver in the general direction of the Transmitter, the red LED arrows on the Receiver will indicate to you which direction to move. When all 4 Arrows illuminate, the Transmitter and Receiver are lined up within a 1/2 inch.

Specifications:

- Maximum Distance: 48" / 4'
- Receiver Accuracy: 1/2" @ 18"
- Transmitter Battery Type: 9V Alkaline (included)
- Receiver Battery Type: 9V Alkaline (included)

Part# 42900



Stop getting caught up in insulation or other obstacles!



FLEX PULLER

FLEXIBLE METAL CONDUIT PULLING TOOL EASILY SCREWS ONTO EXTERIOR OF MC CABLE AND PROVIDES A HOOK TO PULL CABLE.

- Can be used on #14, #12, & #10 MC Cable!

Part# 42620

CONEHEADS

Easy way to pull flexible conduit. Simply thread into interior of flexible conduit, hook onto your string or fish tape and pull!



Part# 42600
Kit includes 1 each for 1/2" & 3/4" Flex



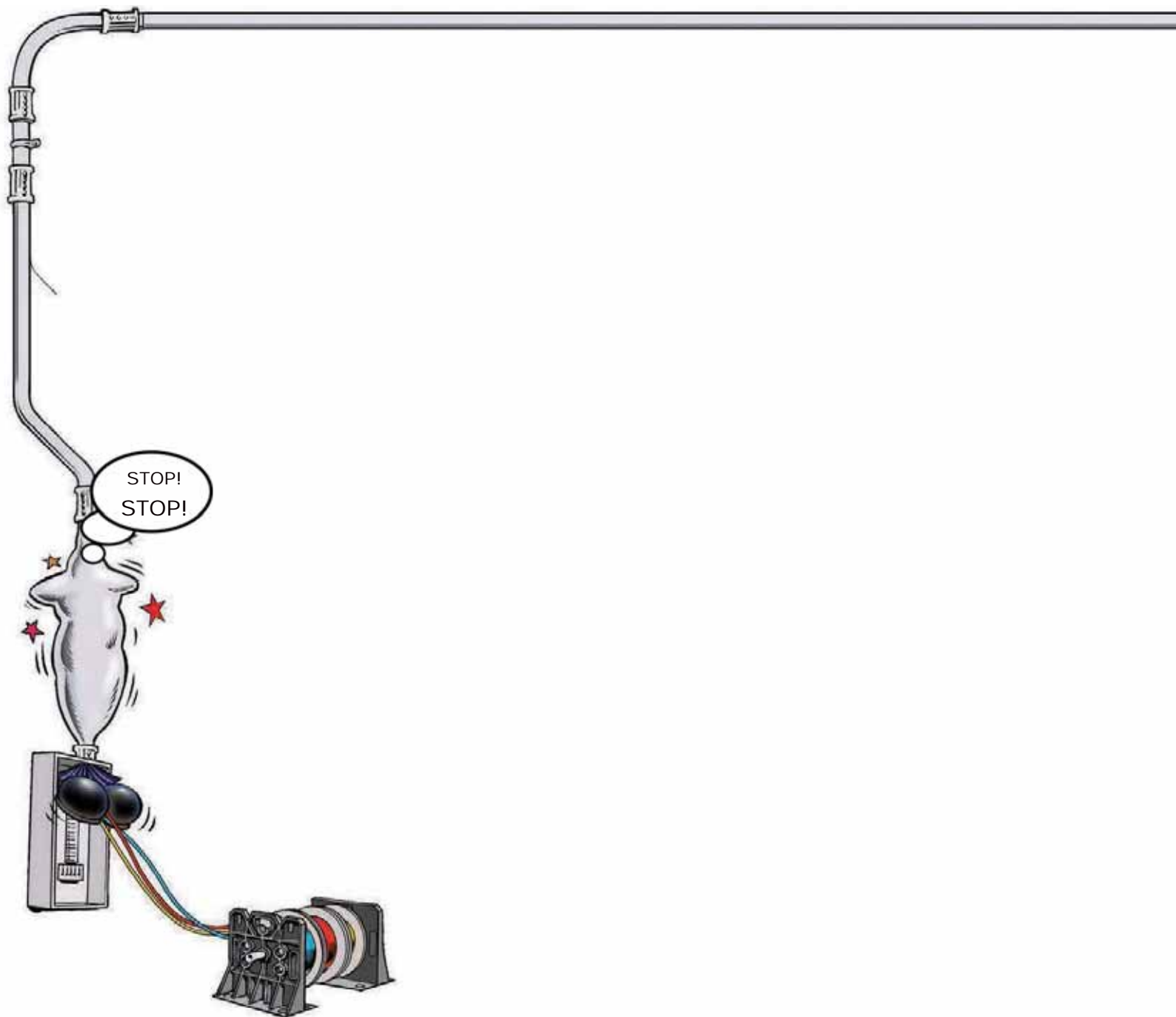
This CO2 powered gun shoots a foam dart with a line attached to it up to 200 ft. Stop climbing your ladder and moving it every ten feet to pull your wire across a T-Bar ceiling. Pull your wire the entire distance in one shot with the Laserline! Tired of wiggling through a crawl space just to drag your wire to the other end? Fire the Laserline, attach your wire, then walk around and pull it across while standing. It's that easy!

You don't even have to recoil the line. Each spool has 1200 ft of line, so you just cut it after each shot and re-attach the dart. Then just load in a new spool when you need it. CO2 cartridges are also replaceable and inexpensive!

Get the job done faster and have some fun – get the Laserline!



Laserline Kit - Part# 83000
Replacement Line 2 (1200ft) - Part# 83001
Dart 3 Pack - Part# 83003



ATTACHMENTS AND ACCESSORIES

We've re-engineered the attachments to fit both the 3/16" rods and the 5/32" rods. They will still be compatible with all existing parts in the field, and the cost remains the same.



FishHook - Use to retrieve or snag wire & cable.

Directional Tool - Offset bend helps guide the Fiberfish around obstructions in walls.

Magnet Head - Used with Fish Finder or to catch the ball chain inside wall cavities.

Pull Ring - Used to attach multiple wires for larger pulls.

Ball Chain - Attach to Fiberfish for interior wall pulls — can be retrieved through small access hole in wall with magnet or Flex-Fish.

Wisp Head - Use over suspended ceilings — won't catch on T-bars.

Screw Tip - Screw into the end of small communication wires for faster and easier pulls.

Contains: FishHook, Directional Tool, Magnet Head, Pull Ring, Ball Chain, and 2 replacement tips. Stored in convenient vinyl pouch.



FIB120 Fiberfish Attachment Kit (1/4" rods)

FIB520 Universal Attachment Kit for ALL (3/16" rods) & (5/32" rods)

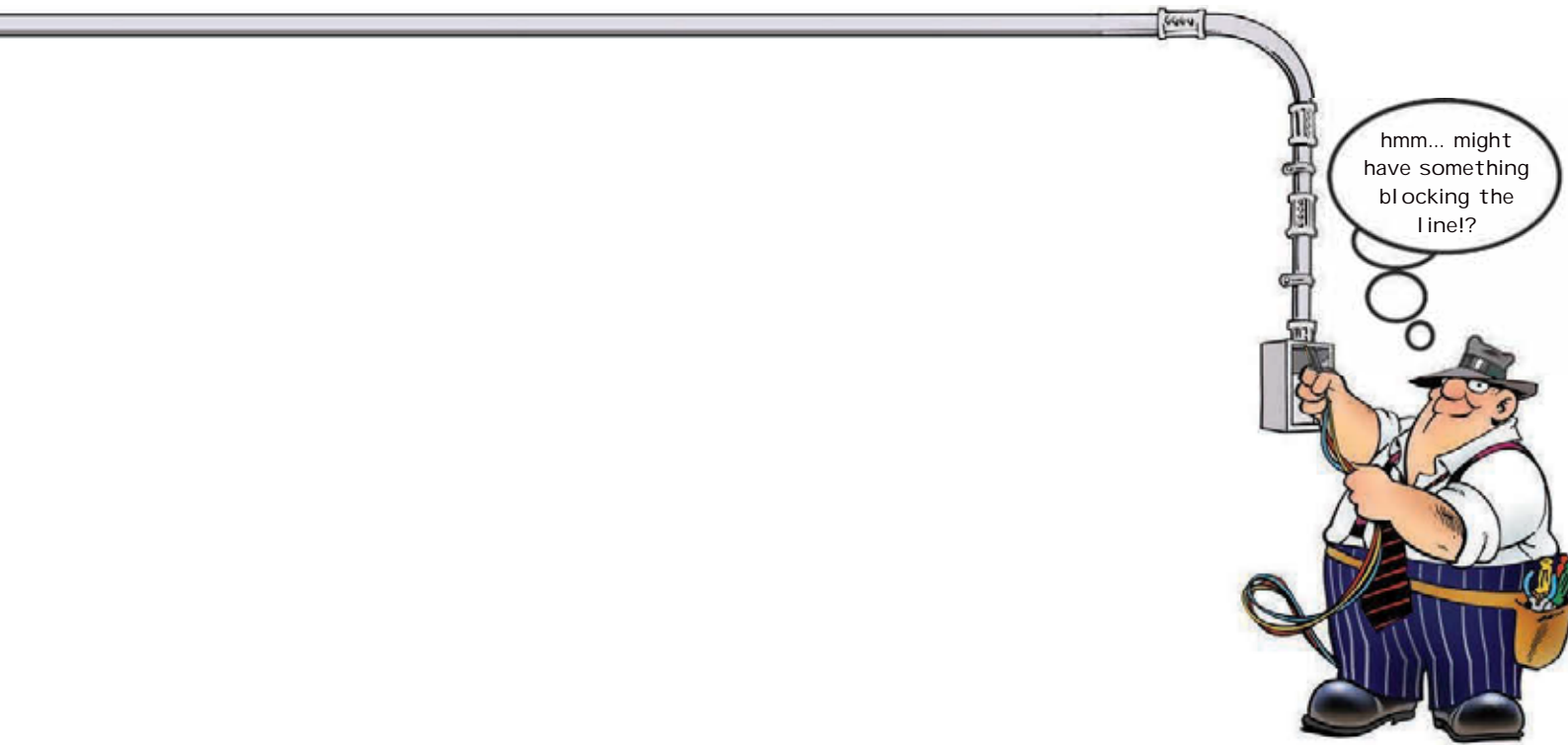
Master Attachment Kit

Contains same as above plus: Wisp Head, Screw Tip, Flex-Fish



FIB140 Fiberfish Master Attachment Kit (1/4" rods)

FIB540 Universal Master Attachment Kit for ALL (3/16" rods) & (5/32" rods)



hmm... might have something blocking the line!?

- 3/8" x 72" HSS Piranhabit
- 20' Fiberglass Telepole
- Attachment Kit
- Carry Case



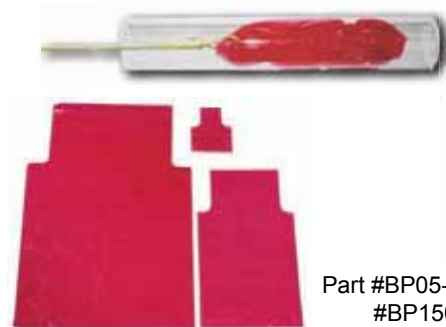
Contractor Pack

- Contains:
- Ferfish II Kit
 - 1/2" x 72" Auger Piranhabit
 - 3/8" x 72" HSS Piranhabit
 - 20' Fiberglass Telepole
 - Attachment Kit
 - Wisp Head
 - Flex Fish
 - Steering Guide
 - 1" Auger Bit
 - Carry Case



Part# **CON200**

BAG PIPERS



3 sizes available to fit conduit 1/2" up to 6"

- Part #BP05-125 (sm) 1/2" x 1 1/4"
- #BP150-40 (med) 1 1/2" x 4"
- #BP20-60 (lrg) 2" x 6"
- #BP05-600 (multi-pack) 1/2" - 6"

THE *MOST INNOVATIVE* TOOL BELTS & BAGS ON THE MARKET



COMBINATION TOOL BELT

PART#

SMALL COMBO - 43421
MEDIUM COMBO - 43242
LARGE COMBO - 43243
X-LARGE COMBO - 43244
XX-LARGE COMBO - 43245
XXX-LARGE COMBO - 43246

SMALL BELT - 43401
MEDIUM BELT - 43402
LARGE BELT - 43403
X-LARGE BELT - 43404
XX-LARGE BELT - 43409
XXX-LARGE BELT - 43410

ELECTRICIAN'S TOOL POUCH - 43201
LARGE 9 POCKET TOOL POUCH - 43202

INCLUDES:

Molded Support Belt, Electrician's Tool Pouch, Large 9 Pocket Tool Pouch, Hammer Holster and Tape Holder

FEATURES:

- Reinforced with bar-tack stitching and heavy duty metal rivets
- 1250 denier DuraTek fabric with high density nylon webbing around pocket openings.



MOLDED AIR CHANNEL SUPPORT BELT

FEATURES:

- The first ever 'Molded Air-Channel Tool Belt' that offers incredible comfort, support, and ventilation for your back.
- The high density nylon 'Web Core' inside the padded belt provides strength to stitching and stress points.
- Metal rings are stitched to the belt's web core with high-density nylon webbing that provides the strongest way possible to attach suspenders.
- All stress points are reinforced with 'bar-tack' stitching along with heavy duty rivets.
- Double metal buckles that add strength and dependability.
- All of our belts and bags are made from double layered 1250 denier DuraTek fabric.
- Available in sizes from 26" to 54"



MOLDED AIR CHANNEL SUSPENDERS

FEATURES:

Our popular padded suspenders easily clip onto the sturdy metal rings that are built into our tool belts. The padded shoulder straps make these the ideal set of suspenders for your tool belt rig.

INCLUDES:

- Adjustable Thick Molded Foam Shoulder Pads
- 2" Wide Adjustable Nylon Straps
- Leather Crossover Divider
- Heavy Duty Spring Hooks that attach to the rings on the Molded Air-Channel Belts



PART# 43606

Butt Pouch Pocket Pro

Pocket Tool Holder



Features:

- Quick to put on AND COMFORTABLE!
- These tool pouches fit in your pocket
- Made of ballistic nylon
- Lightweight & durable

Mini - Part# 43015
 Grande - Part# 43095
 Driller - Part# 43110

Mini



Grande



Driller



No belt required!

Small 25 Pocket Tray Tool Carrier

Features:

- 14 exterior pockets (5 with velcro closures)
- 14 interior compartments & pockets
- 1 7" x 5 1/2" twelve-compartment plastic tray
- 1 large exterior zip-top pocket
- 1 measuring tape clip
- Includes shoulder strap

Part# 43707



Large 44 Pocket Tray Tool Carrier

Features:

- 29 exterior pockets (3 with velcro closures. 1 large clear pocket with velcro closure)
- 16 interior compartments and pockets
- 2 7" x 5 1/2" twelve-compartment plastic trays
- Includes shoulder strap

Part# 43706



A new revolutionary tool box



- No mixing between drawer compartments
- Extremely strong
- Easy to operate
- Made in USA

Part# 66536 – Yellow/Black



Part# 66536



STAPLESHARK

THE STAPLE SHARK IS A DUAL-ENDED TOOL! ONE END IS USED FOR PULLING STUBBORN STAPLES AND THE OTHER ACTS AS A MULTI-PURPOSE PRY BAR. THIS UNIQUE TOOL PROVIDES EASY STAPLE PULLING FOR ANY SIZE OF CABLE STAPLE.

FEATURES

- MADE OF HARDENED STEEL.
- DOUBLES AS AN 8 INCH RULER.
- INCLUDES A HANDY NAIL PULLER AND PRY BAR FOR MULTIPURPOSE USE.



PART# 52455

BIGG LUGG

Bigg Lugg I

The original cordless drill holder.

Part# 43001

Bigg Lugg II

The next generation for personal tool carriers designed for cordless drills, air-nailers, paint cans, etc. (limit 10 lbs)

Part# 43002



MEASURING TAPE

- Easy one-person pipe measuring
- Non-slip end hook
- Three stop buttons
- Sturdy casing

1" Wide 25' Long



Part# 52499



Pencil

Show up your buddies on the job site with your Rack-A-Tiers branded carpenter's pencil. They do the job and look great.

Part# 52466

Hammer

You asked us and we delivered. Finally, a solid hammer available at a decent price. Don't break the bank on your hammer, buy it from us!

Part# 52477

Felt Marker

Complete your tool kit with a black felt marker from Rack-A-Tiers.

These things come in handy and ours won't run dry on you!

Part# 52488



CROC'S

NEEDLE NOSE WIRE STRIPPERS



- Needle nose tips
- NMSC stripper at the "nose" where it is easier to use inside boxes
- Strips conductor sizes from #10 down to #22 AWG (for telephone wire)
- Large cutting blades for easy general purpose cuts
- Barrel sleeve crimper near the pivot
- Ergonomic "hourglass" shaped handles for comfort & speed
- Glow-in-the-dark handles

Part# 47000



V-CUTTER

ATTACHABLE PRECISION WIRE STRIPPER



- A new way to strip NMSC cable
- Easily attaches to most wire strippers
- Strips cable in or out of electric boxes with push action
- Virtually eliminates nicking or cutting the wire insulator

Part# 47010

BEND ALL Cable Bender



Finally! The amazing knuckle saver from Rack-A-Tiers®

- Captures wire
- Bend inside enclosures to the right or left
- Bend to the front or back
- Your feeders will lie in the lugs

Part# 77455

Machined from 6061 aircraft aluminum
Fits a standard 1/2" ratchet.
Fits #3 to 500 MCM conductors



Ever give a meter base a knuckle sandwich? Too bad it was your own. Next time, defend yourself with the Bend All. Perfectly sized for 4/0, it takes the pain out of 200 amp services or sub feeders and conductors like it too. The Bend All makes micro adjustable bends without brutalizing the wire.

knuckle buster!



piece of cake!



RACKSY PAD KNEE PADS WITH GEL IMPLANTS



Save your knees, you'll need them later!

Sturdy and so comfortable, you'll actually wear them. Velcro/elastic straps make these knee pads easy to put on and take off.

Part# 66455



So comfortable, you'll never want to get up.

BOOTY PACK

Keepin' It Clean!

Leave a clean impression, not your dirty tracks with these slip resistant plastic booties, comfy gloves & respirator.



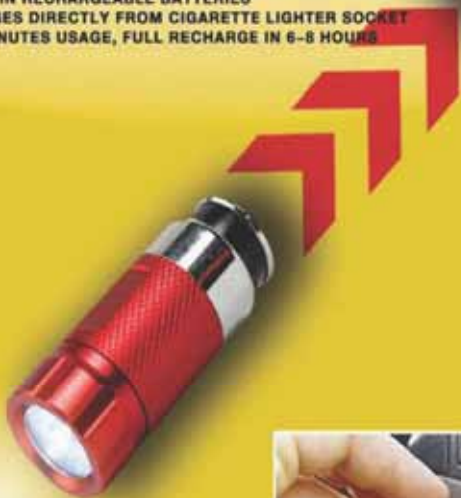
you wearing your booties & gloves?

Kit Includes: 6 pairs of booties, 4 pairs of nitrile gloves
4 pairs of vinyl gloves and a 3-N95 Respirator

Booty Kit: Part# 47099
Booties only sold separately: Part# 47099B
Bag of Booties (6 Pairs): Part# 47099BB

THE GOPHER LED RECHARGEABLE FLASHLIGHT

- FEATURES A 0.5 WATT BRIGHT WHITE LED EMITTER
- CRYSTAL PLASTIC REFLECTOR OPTIC
- ANODIZED ALUMINUM STURDY CONSTRUCTION
- BUILT-IN RECHARGEABLE BATTERIES
- CHARGES DIRECTLY FROM CIGARETTE LIGHTER SOCKET
- 120 MINUTES USAGE, FULL RECHARGE IN 6-8 HOURS



Part# 53010

Bolt Template

41 Templates in One! Quick and Easy! Reusable!
Set-Up in Minutes! Weather Resistant ABS Plastic.



Select a hole saw that measures about 1/8" larger than the bolt to be used and drill the template at the selected easy centering divot mark.

Part# 67441

For setting poles 8" - 24"



Panel Buddy Knockout Kit

Tired of trying to remove knockouts?

- Kit removes knockouts on Electrical, Security, Alarm and Datacom Panels
- Works with lipped and unlipped panels.

Part# 7WBK100



P.S. Knight Electrical Code Books

***over 750,000 copies sold**



The industry's most comprehensive publication on Canadian electrical code clarifies the New Code Rules.

- Now over 1000 pages
- Over 1000 code rules & revisions, clearly explained & indexed
- 1000 Detailed illustrations & calculations
- Code tables & practice exam
- 400 questions & answers added

Commercial & Industrial Book 2

Based on the 22nd Edition of the Canadian Electrical Code

For the Professional Electrician

By P. S. Knight

Complete instructions on house wiring

Clarity - These books are clear and to the point. Easy to understand explanations replace official jargon.

Part #73129 - Electrical Code Simplified

#73110 - B.C.

#73111 - Alta., Sask., Man., NB. NS. Nfld.

#73115 - Ontario



Canadian product produced by a Canadian for use by Canadians.

DEWALT Reference Books

Electrical Trade Series



On the job pocket reference books offer easy to read charts & detailed illustrations. The 4" x 6" size fits easily in a toolbox or pocket. Each book features over 350 pages of complete reference material.

Professional Reference Books

Part #'s

73200—Electrical

73205—Wiring Diagrams

73203—Lighting & Maintenance

73208—Electrical Estimating

73201—Datacom

73204—Electric Motor

73210—Security, Sound & Video

Electrical Licensing Part# 73206

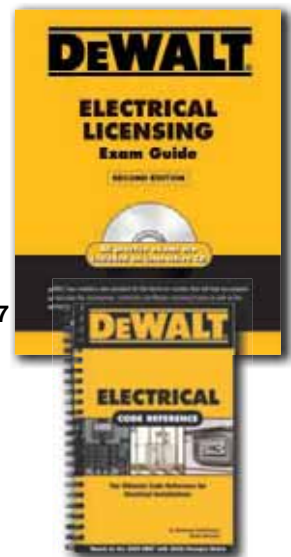
Based on the 2011 International Code®

Subjects include methods to improve test scores, strategies to prepare, study aids and tips, examination regulations, formulas and references, realistic sample exams, and answer keys with corresponding NEC® references.

Electrical Code Reference Part# 73207

Based on the 2011 International Code®

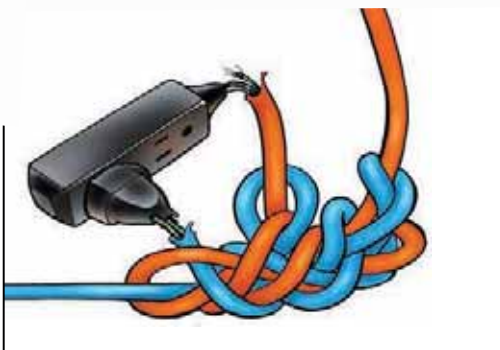
Illustrates hundreds of the most common code requirements, violations and installation concerns including: materials, notching and cutting, commercial hoods, combustion air openings, access and clearances, duct construction, mechanical ventilation.



Qwik Lok

▶ The CLICK you can Trust

**ARRANTEES EXTENSION CORDS AND TOOLS ARE
CKED TOGETHER. IT IS THE TOUGHEST, STRONGEST,
ST RELIABLE, 120V - 15A CONNECTOR.**



Tired of this?

- Qwik-Lok is the 'Must-Have' locking retro-fit /replacement connector for extension cords
- An outstanding end that eliminates tied, frayed, burned out or ruined cords and connectors
- Works with common 2 or 3 pronged plugs
- Eliminates need for 'twist-lock' devices
- Delivers consistent, reliable power at all times for demanding industries & trades

Part# 97008



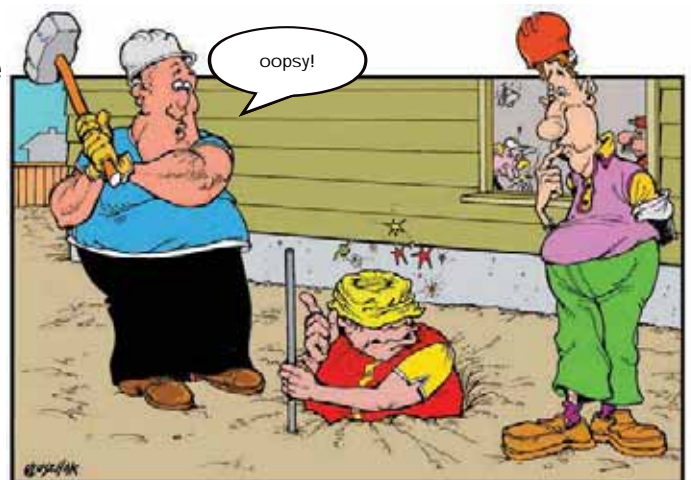
SLUGGO-OX™ The Ultimate Ground Rod Driving Tool

SLUGGO-OX™ is the revolutionary new tool that's taking the industry by storm.

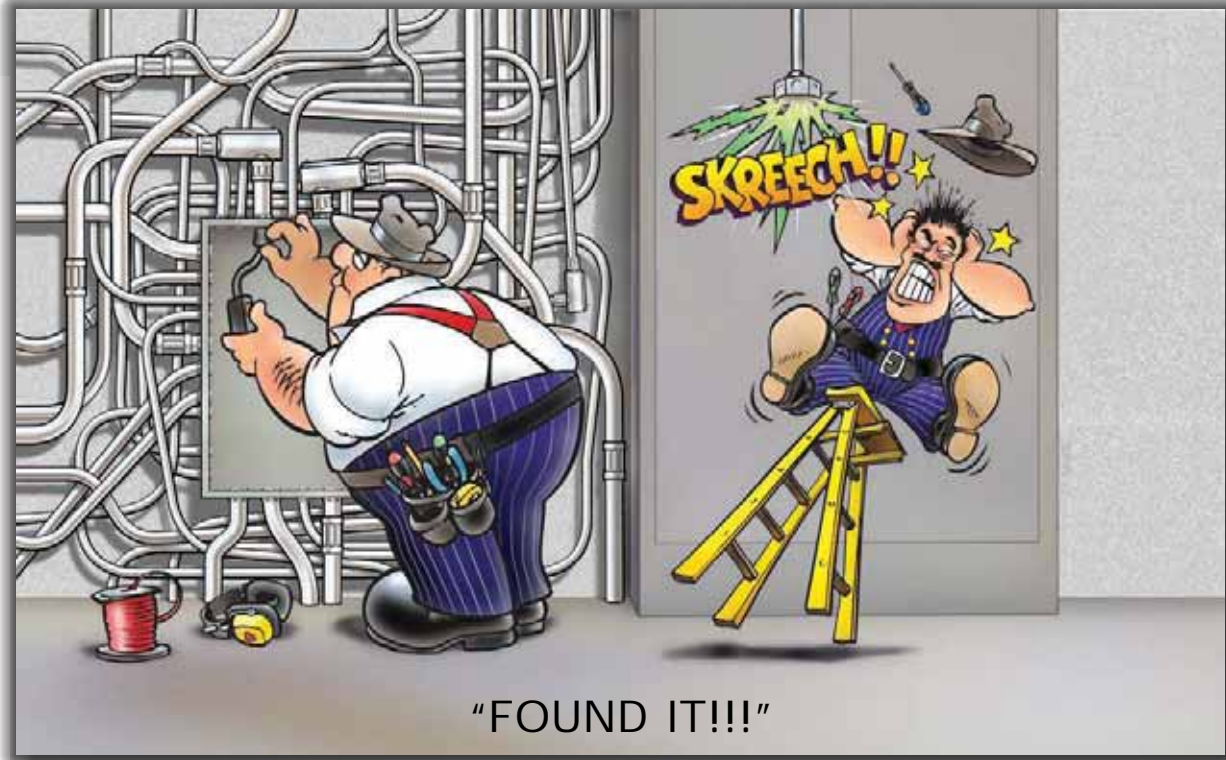
Features:

- Incredibly strong, made of 3" hot-rolled, heat-treated, hardened steel
- 3 1/2" bore to accept 3/4" and 5/8" ground rods
- 80% more striking surface
- One piece, light-weight (7lbs.)
- Yellow zinc chromate surface to deter rust

Part# 67119



"Your turn to hold the ground rod, I think it's time we got a 'Sluggo-Ox'!"



"FOUND IT!!!"

PIPER

Conduit Tracking System

- Tracks conduits in minutes.
- Works in unobstructed 1/2" to 6" EMT, Rigid, or Plastic pipes to well over 300 feet.
- Finds pipe ends that would be impossible to locate by the old "stuff the fish down the pipe" method.



Part# 99005 1/2" - 1"
Part# 99006 1/2" - 2"

Nut Blaster

The Nut Blaster Universal Wire Connector Tools

Features

- Fast, Easy Installation
- Prevents sore fingers and cramping hands
- Fits all brands, red, grey & blue



XL - Part# 72101
XXL - Part# 72102

BREAKER LOK



LOCK YOUR BREAKER IN THE ON OR OFF POSITION WITH THE BREAKER LOK

Features

- The only breaker lock you need
- Fits most manufacturer's breakers
- Also works on standard toggle switches



Part# 75000

We've Got the Hole Thing Covered!

Brick, Fiberglass, Plywood, Plastic, Roofing, Tile, Mdf Fibre Cement Board, Laminates, Osb, Concrete Block, Aluminum, Steel, Stainless Steel, Hardie Board, Stucco, Sheetrock, Hard Woods, Soft Woods, Slate, Nonferrous Metals, Sheet Metal and...

Well, you get the picture!



Mega TCT Hole Saws

- Cut wood, sheetrock, fiber cement board, plaster, fiberglass, OSB, chipboard, MDF, and other tough materials.
- Tough Tungsten Carbide teeth extend past inside and outside walls for reduced friction and much faster cutting.
- Large side gullet slots for fast chip removal and fast plug removal
- Ultra Deep 2" cutting depth
- Use with standard hole saw arbors
- **Cuts through nails.**

Part#	Size
91613	1-1/8"
91615	1-3/8"
91617	1-5/8"
91619	1-7/8"
91621	2-1/16"
91622	2-1/8"
91625	2-9/16"
91627	2-3/4"
91629	3-1/8"
91630	3-3/8"
91632	3-5/8"
91633	4"



Heavy Duty TCT Masonry Hole Saws

- Engineered for fast cutting through stucco or FRP / fiberglass as well as metal lath and plywood.
- Cuts through heavy duty brick and cinderblock.
- All hole cutters have a 2-3/8" cutting depth.
- Perfect for use with 18 volt hand drills to cut holes up to 4-1/4" diameter.

Part#	Size
91412	1-1/4"
91414	1-1/2"
91416	1-3/4"
91417	2"
91419	2-1/4"
91420	2-1/2"
91421	2-5/8"
91422	3"
91434	3-1/2"
91424	4"
91426	4-1/4"



Carbide Tipped Steel Cutters

WE HAVE HIGH END AND LOW END CUTTERS

- Ejector spring
- Tapered center drill
- 5/8" up to 5 1/2"



Part# 93000 Series

Part# 92000 Series

IF YOU ARE TIRED OF HOLE CUTTERS THAT DON'T CUT IT, CALL US FOR INFORMATION ON OUR GERMAN QUALITY HOLE CUTTERS.

Multi Bit (Step Drills)

Hardened stepped Bits for clean cuts in sheet metal, electrical boxes, arborite, etc. Handy for creating knockouts.

MLT1	1/8" - 1/2"	13 step
MLT3	1/4" - 3/4"	9 step
MLT4	3/16" - 7/8"	12 step
MLT5	7/16" - 1 1/8"	12 step
MLT 7	1/4" - 1 1/2"	11 step



Available in 1/8" to 1 1/2" sizes

Never get caught in a drilling extension jam again!

The Javelin™

ALL-IN-ONE DRILLING EXTENSION

HOLDS HOLE SAWS, SPADE BITS, SCREW TIP HOLDERS, NUT DRIVERS AND ANY OTHER TOOL WITH A 1/4" HEX SHANK.

- Cut 3/8"-16 threaded rod to desired length
- Fits any tool with 1/4" hex shaft
- Fits in all standard drill chucks
- Can be extended by using 3/8" rod couplings
- Hole saw arbor also included

Part# 95000
Pat# 7,802,948

PACKAGE INCLUDES:



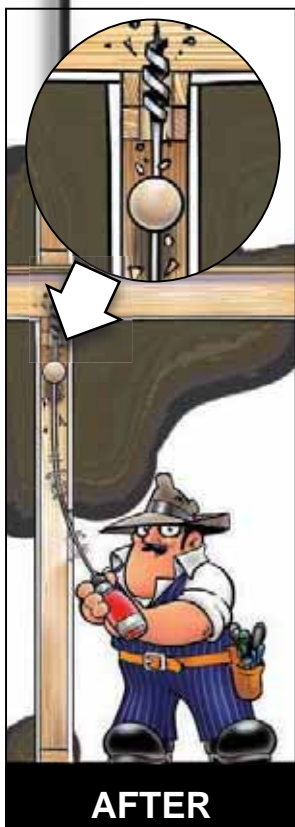
DON'T GET
RIPPED OFF!

not all hole
cutters are equal!
let us find the
right one for you.



BUMPER BALLS

These balls will keep your bits centered!



NO MORE...

- Bit walking
- Nail hitting
- Wall patching
- Carpet

Fits all 3/16" shaft auger bits

Kit includes 1 each of 1 3/4" & 2 1/4" Balls

Part# **BB3412**

PIRANHABITS

Piranhabits have 3/16" flexible shafts so they can bend while rotating. This allows drilling inside wall cavities, through box cut-outs or through other small openings.

Quattro Flex Auger Bits

Fast and aggressive self feed auger bits, welded to a flexible shaft. Cuts clean holes. Crossbored at both ends for easy wire pulling. Use for wood only.

QTT3824	3/8"x24"	Auger flexbit
QTT3836	3/8"x36"	Auger flexbit
QTT3848	3/8"x48"	Auger flexbit
QTT3854	3/8"x54"	Auger flexbit
QTT3872	3/8"x72"	Auger flexbit
QTT1224	1/2"x24"	Auger flexbit
QTT1236	1/2"x36"	Auger flexbit
QTT1248	1/2"x48"	Auger flexbit
QTT1254	1/2"x54"	Auger flexbit
QTT1272	1/2"x72"	Auger flexbit
QTT91624	9/16"x24"	Auger flexbit
QTT91636	9/16"x36"	Auger flexbit
QTT91648	9/16"x48"	Auger flexbit
QTT91654	9/16"x54"	Auger flexbit
QTT91672	9/16"x72"	Auger flexbit
QTT3424	3/4"x24"	Auger flexbit
QTT3436	3/4"x36"	Auger flexbit
QTT3448	3/4"x48"	Auger flexbit
QTT3454	3/4"x54"	Auger flexbit
QTT3472	3/4"x72"	Auger flexbit

More sizes available

High Speed Steel

Superior quality M-2 High Speed Steel drill bit, welded to a flexible shaft. Cuts both metal and wood. No need to worry about hidden nails or metal studs when drilling.

FLX1424	1/4"x24"	HSS Flexbit
FLX1436	1/4"x36"	HSS Flexbit
FLX1448	1/4"x48"	HSS Flexbit
FLX1454	1/4"x54"	HSS Flexbit
FLX1472	1/4"x72"	HSS Flexbit
FLX3824	3/8"x24"	HSS Flexbit
FLX3836	3/8"x36"	HSS Flexbit
FLX3848	3/8"x48"	HSS Flexbit
FLX3854	3/8"x54"	HSS Flexbit
FLX3872	3/8"x72"	HSS Flexbit
FLX1224	1/2"x24"	HSS Flexbit
FLX1236	1/2"x36"	HSS Flexbit
FLX1248	1/2"x48"	HSS Flexbit
FLX1254	1/2"x54"	HSS Flexbit
FLX1272	1/2"x72"	HSS Flexbit



Guide Tool
Part# **FIB-GUD**

Allows the Piranhabits to bend for drilling from outside the wall cavity.

HEAD & SHANK COMBOS SWITCHBIT HEAD & SHANK PACKAGES

NEW SWITCH BIT LINE!

Rack-A-Tiers is proud to announce our newest line of flexible installer bits, The Switch Bit Line.

Now you can quickly customize your set with these flexible installer bits with interchangeable heads and various shank lengths for any job.

CROSSBORED THROUGH SHAFT TO ALLOW WIRE PULLING!

ET31621	Single Shank	3/16"	21"
ET31633	Single Shank	3/16"	33"
ET31651	Single Shank	3/16"	51"
ET31669	Single Shank	3/16"	69"
ET1415	Single Shank	1/4"	15"
ET1421	Single Shank	1/4"	21"
ET1433	Single Shank	1/4"	33"
ET1451	Single Shank	1/4"	51"
ET1469	Single Shank	1/4"	69"



Auger Bit File

THE BEST FILE FOR AUGERS IS BACK!

This file is specially designed to prevent damage to surfaces next to those being filed. One end has safe (uncut) edges and the other end has safe sides. Perfect for sharpening auger bits.



COMING THIS FALL

Part# **AUFILE**

Flex Bit Extensions

Flexible Extensions provide more reach and feature dual set screws for extra strong hold. Use the 1/4" Extensions for the 3/4" Auger Piranhbits



FIBEX48	3/16" x 48" Extension
FIBEX54	3/16" x 54" Extension
FIBEX72	3/16" x 72" Extension
FIBEX1448	1/4" x 48" Extension for 3/4" bits
FIBEX1454	1/4" x 54" Extension for 3/4" bits
FIBEX1472	1/4" x 72" Extension for 3/4" bits

OverDRIVE™

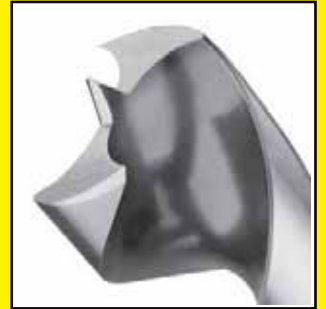
FAST BORING AUGER BITS

DESIGNED FOR BATTERY DRILLS

Part #AW34OD-3/4" x 7"
#AW78OD-7/8" x 7"



Cuts like a knife through butter!



Tired of junk auger bits? Rack-a-Tiers found the star-m brand that has produced quality products for over 80 years for professional trades people.

Nail Chipper Ship Auger



TRI-CUT design with 3 precision ground edges for fast, smooth cutting without resistance.
REDUCES NAILS TO CHIPS without grabbing and leaves a clean hole with minimal "blowout."

Standard Ship Auger



Precision ground cutting edge for fast cutting of clean holes in wood.
Burr-free lead screw for easy starts and pull-through without material build-up.

NOTHING BUT THE BEST!

- Burr-Free Lead Screw
- Light Weight
- Carbon Steel Construction

With precise heat-treat and hardening processes for strength and durability.

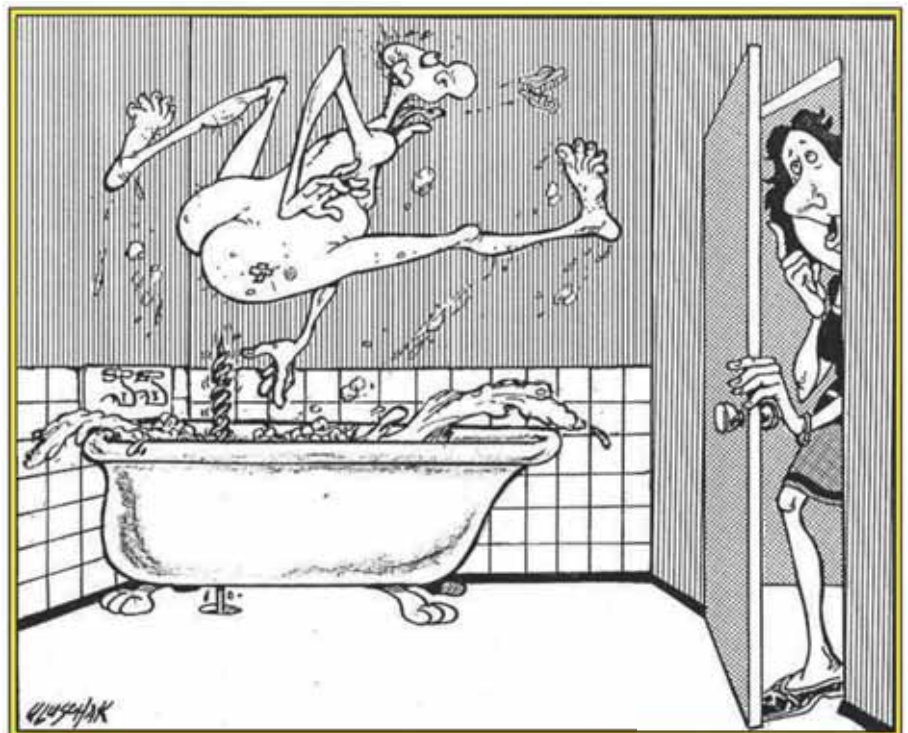
18" Auger Bits

AW3818	3/8"
AW1218	1/2"
AW11618	11/16"
AW3418	3/4"
AW7818	7/8"
AW118	1"
AW1418	1 1/4"

7 1/2" Auger Bits

AW3807	3/8"
AW1207	1/2"
AW11607	11/16"
AW3407	3/4"
AW7807	7/8"
AW107	1"

To order Tri-Cut Bits add a 'T' to the Part #'s



"By the way – the electricians are in the crawl space drilling holes for the wiring to the new hot-water tank."



Multi-Function Hole Cutter



Cuts through:

- Plywood
- Fiber cement board
- Sheetrock
- Up to 20 GA. sheet metal
- Fiberglass
- Aluminum

Part# 90200
Part# 90300
Part# 90400



Compare Features →	Other Hole Saw Kits →	HOLE PRO
Adjusts to exact hole size needed	NO Van full of dull hole saws	YES 1 7/8" - 9" 1 7/8" - 12" 1 7/8" - 17"
Dust collector shield	NO Lady finds new contractor	YES Clean job
Designed to reduce kickback	NO Jaw breaker	YES Non-Jaw breaker
Economical replaceable blades	NO Sharpen a bunch of little teeth	YES Sharpen only two blades
Price	\$300.00	Less than half No-brainer!!!

Replacement
Blades



Part# 90-VH HSS
Part# 90-VT Carbide

SAVE YOUR LUNGS! CUTTING HOLES WITHOUT PROTECTION CAN BE HAZARDOUS TO YOUR HEALTH. PROTECT YOU & YOUR CREW WITH THE HOLE PRO.

Hole Saw Accessories

Arbor Extension



Part# 90105

HOLE SAW DUST SHIELD

- Has a ABS shield that collects all the dust and shavings when using a hole saw.
- Has a 7 3/4" OD and 6 3/8" ID supporting a hole saw up to 6 1/4" in diameter and up to 2 1/2" cutting depth.
- Saw and vacuum adapter sold separately
- Requires arbor extension for use.



Part# 90103

ARBOR HOLE SAW ADAPTER FOR ALL HOLE CUTTER MODELS

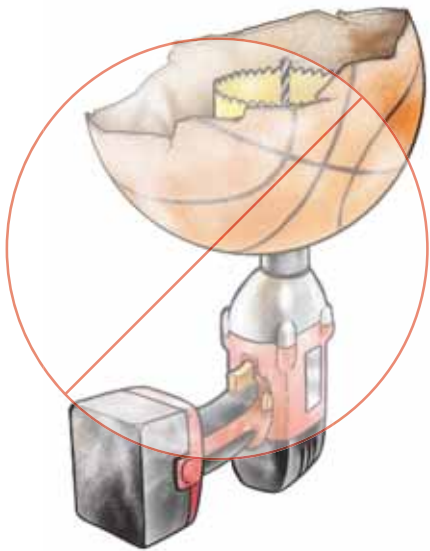
- Converts any hole cutters for use with any hole saw
- Unique dual head design allows mounting 1/2"-20" or 5/8"-18" threaded hole saws



VACUUM ADAPTER FOR ALL HOLE PRO DUST SHIELDS

- Reusable plug to re-seal shield hole
- Perfect addition to hole-pro shields, power series X & XL models
- Attaches to standard 1" power tool vacuum hose

Part# 90101



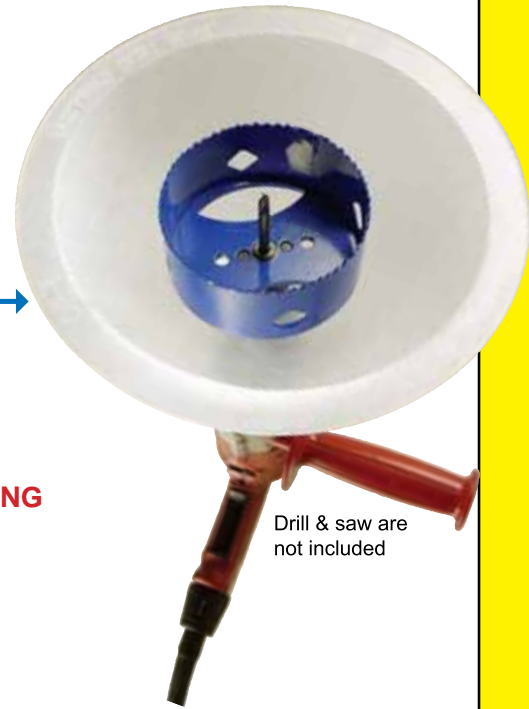
DRILLER'S Dust Bowl

HOLE SAW DUST COLLECTOR

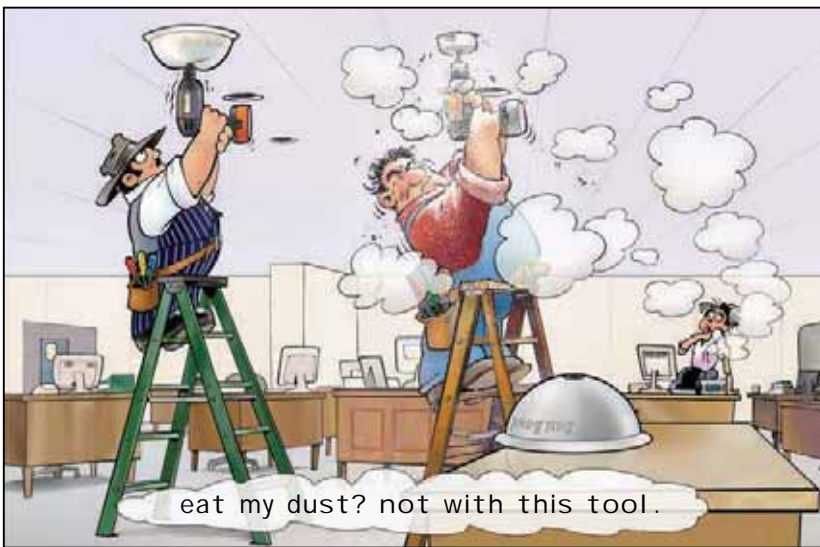
← Old way Best way! →

Fits hole saws up to 8"

NEW IMPROVED WITH NYLON BUSHING



Drill & saw are not included



SAVE THE BALLS FOR THE COURT!

You may enjoy a face full of drywall dust, but your customers might not. The flexible DRILLER'S DUST BOWL compresses against the work surface and traps all dust and debris as you drill. It fits your drill and hole saw without any adjustments. Put an end to 'unprotected hole sawing'.

Part# 48000

EXPLODING GARBAGE CAN

Heavy duty, tear resistant, polytuf fabric

COLLAPSIBLE TRASH CONTAINER

- Featuring an internal support spring that "Springs into Action"

Part# 51000

Size:
19" x 24" (open)
1 1/2" x 24" (collapsed)



Who says you're a slob? Clean up your reputation with your own trash can. The Exploding Garbage Can will dazzle your customers, especially if you use it! Pops up and folds flat — ready when needed. You can also take one home for the garden.

RACKY BITS

COLOR CODED DRIVE BITS

Faster, easier and more efficient bit selection!



Magnetic Hex Bits

- RED** 1/4" Hex Drive
 - YELLOW** 5/16" Hex Drive
 - BLUE** 3/8" Hex Drive
 - BROWN** 7/16" Hex Drive
 - BLACK** 1/2" Hex Drive
- Available in: 2½" & 6" Hex Bits

4" & 6" Double Ended Bits

- #2 Phillips 1/4" slot
- #1 square drive
- #2 square drive

ROBERTSON® IMPACT DRIVER BITS



- | | | |
|--------|------------------|--------------------|
| 7011PI | Phillips #1 x 1" | Short, skinny grey |
| 7012PI | Phillips #1 x 2" | Long, skinny grey |
| 7021PI | Phillips #2 x 1" | Short, thick grey |
| 7022PI | Phillips #2 x 2" | Long, thick grey |

- | | | |
|--------|-------------------|-------------|
| 7011RI | Robertson #1 x 1" | Short green |
| 7012RI | Robertson #1 x 2" | Long green |
| 7021RI | Robertson #2 x 1" | Short red |
| 7022RI | Robertson #2 x 2" | Long red |
| 7031RI | Robertson #3 x 1" | Short black |
| 7032RI | Robertson #3 x 2" | Long black |



Genuine ROBERTSON® Bits

- YELLOW** #0 Square Drive
- GREEN** #1 Square Drive
- RED** #2 Square Drive
- BLACK** #3 Square Drive
- ORANGE** #4 Square Drive

Phillips Bits

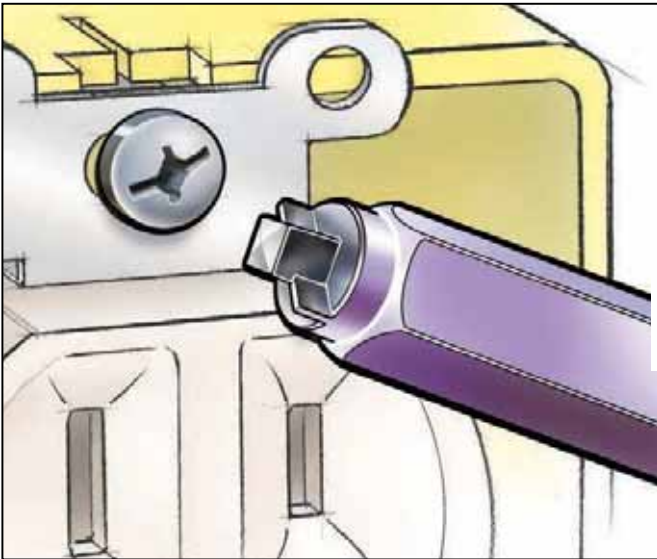
- BLUE** #2 Phillips
- LIGHT BLUE** #1 Phillips



Ordering Options:

1. Convenient blister cards
2. Bulk qty(s) for display case

THE PEG THAT FITS THE HOLE



lock HARD™



The lockHARD locks in place
and never strips.

Part# 72134P 4"
Part# 72136P 6"

Available in both bulk quantities
or packaged blister cards.

PICQUIC®

- Slim, comfortable and solid
- Corrosion proof magnetic alloy shank
- Legendary instant-bit-change

Stubby

- Solid, comfortable, high torque handle
- 6 High quality 1.3" length insert bits
- Ideal for work in close quarters



Part# P91000

Dash 7

- 7 - 2" length, 1/4" Hex Powerbits
- Comes in 4 bright new colors



Part# P05001

SIXPAC Plus

- 7 - 3" length, 1/4" Hex Powerbits
- 11.5" total length

Part# P88001



Industrial Series



proGrabit

Damaged Screw Remover

- Works on jagged, uneven and rough breaks
- Self centering tip, no walking
- Compatible with quick connect chuck systems
- Easy to use with 3/8" variable speed reversible drill
- Extracts screws up to 4 inches

	Screws	Bolts
Grabit #1	No. 4 - No. 6	No. 10 (5mm)
Grabit #2	No. 8 - No. 10	1/4" (6mm)



Rounded out screw heads, what a nightmare! Not anymore. Just drill out the damaged screw / bolt with one end of the Grabit, then flip it over and the "grab end" winds out the screw. MADE IN USA

Kit Part# 72120

HOPPY BENDER

THE HOPPY BENDER IS HANDS DOWN THE MOST INNOVATIVE AND SMARTEST BENDER ON THE MARKET.

WE HAVE REVOLUTIONIZED THE WAY ELECTRICIANS BEND PIPE -- IT HAS NEVER BEEN EASIER OR FASTER THAN IT IS NOW WITH THE HOPPY BENDER

FEATURES

- A "STOP" ATTACHED TO THE BENDER HEAD USED TO CREATE EXACT AND REPEATABLE BENDS EVERY TIME.
- SIMPLIFIED "MULTIPLIERS" ENGRAVED INTO THE BENDER FOR PLACING THE "STOP" PRIOR TO MAKING OFFSETS AND FOUR-POINT SADDLES.
- SPECIAL 22.5 AND 45 DEGREE MARKS ENGRAVED INTO THE BENDER FOR PLACEMENT OF CONDUIT BEND MARKS AS WELL AS STANDARD DEGREE MARKS FOR STOP PLACEMENT, USED TOGETHER FOR BENDING THREE-POINT SADDLES WITHOUT REVERSING THE CONDUIT IN THE SHOE.
- HANDY REFERENCE CHARTS ATTACHED TO THE HANDLE FOR LOCATING BEND MARKS.

MFG NOTE

EVEN THE MOST COMPLICATED BENDS ARE MADE AS EASY AS 1,2,3 OFFSETS, 3 & 4 POINT SADDLES, 90° BENDS ALWAYS PERFECT AND DONE IN A FRACTION OF THE TIME!

Hoppy Bender Part#'s
 1/2" Hoppy Bender - 57050
 3/4" Hoppy Bender - 57075
 Replacement Handle - 57002
 Replacement Thumb Screw - 57005
 1/2" Replacement Label - 57050Lab
 1/2" Replacement Swing-Stop - 57057
 3/4" Replacement Label - 57075Lab
 3/4" Replacement Swing-Stop - 57077

STEP ONE

READ TABLE & MARK CONDUIT



STEP TWO:

SET STOP



STEP THREE:

INSERT CONDUIT



STEP FOUR:

BEND!



The Pipe Viper™

FASTER AND EASIER THAN CUTTING AND GLUING FACTORY FITTINGS

HOW?

INSERT THE SPRING INTO THE PIPE AND BEND ACROSS YOUR KNEE!

- No Heat Guns
- No Heat Blankets
- Fewer PVC Fittings

- Part# 58050 - 1/2"
- Part# 58075 - 3/4"
- Part# 58100 - 1"
- Part# 58125 - 1 1/4"
- Part# 58150 - 1 1/2"
- Part# 58200 - 2"
- Part# 58250 - 2 1/2"
- Part# 58300 - 3"
- Part# 58350 - 3 1/2"
- Part# 58400 - 4"

Cold PVC Pipe Bender

YOU CAN COLD BEND

RIGID PVC PIPE WITHOUT COLLAPSE OR FRACTURE



Definition of Cold

NOTE: *Pipe should be 50° F or warmer.*
PVC pipe requires slight over bending which will "pop back" a few degrees upon the release of bending pressure.

COMING THIS FALL

PVC BENDIT INC.

PVC BENDIT OFFERS:

- THE MOST CAPABLE, AFFORDABLE AND FLEXIBLE SYSTEM FOR HEATING AND BENDING PVC PIPE.
- CREATE COMPLEX COMPOUND BENDS WITHOUT MISSHAPING THE PIPE FOR LENGTHS UP TO 18 FT.
- CONSERVES ENERGY BY HEATING FROM THE INSIDE WITH A TOOL CALIBRATED FOR THE PRECISE BENDING TEMPERATURE FOR PVC.
- YOU WOULDN'T HEAT YOUR HOUSE FROM THE OUTSIDE. WHY DO THE SAME WITH PVC PIPE?

Part# 59100 - PVC Bendit Series A
Can bend 1/2", 3/4", 1", and 1 1/4" PVC Pipe

Part# 59200 - PVC Bendit Series B
Can bend 1 1/2", 2" 2 1/2", and 3" PVC Pipe

A sleeve is required for any PVC Pipe 2" - 3"

LASER PLUMB BOB

BEFORE



AFTER



Part# 88455

LOOKING FOR A BETTER WAY TO LAY OUT COMPLEX CEILING AND HIGH BAYS? THE LASER PLUMB BOB, THE SELF LEVELING VERTICAL LASER FROM RACK-A-TIERS, IS THE ANSWER!

FEATURES

- SOLID BRASS CONSTRUCTION
- CONVENIENT ON/OFF SWITCH
- FACTORY ALIGNED LASER MODULE CALIBRATED TO PRECISE 0.15 ACCURACY
- MAGNETIC DAMPING FOR QUICK STABILIZATION
- SELF LEVELING AND ALIGNING (VERTICALLY)
- DURABLE PLASTIC CARRY CASE
- BATTERY INCLUDED

MFG NOTE: FOR ALL COMMERCIAL, INDUSTRIAL, OR RESIDENTIAL INSTALLATIONS. GREAT FOR LAYING OUT CEILING LIGHTS.

Laser Plumb Bob - 88455
 Laser Plumb Bob Arm With Magnet Attached - 88-ARM
 Laser Plumb Bob Base - 88-BASE
 Laser Plumb Bob Battery CR 123 - 88-BAT

THE STRAIGHT SHOT LEVEL

PART# 45303

- THREE PRECISION VIALS: 0°, 45°, AND 90°.
- THREE RARE EARTH MAGNETS.
- EXTRA LARGE "V" GROOVED EDGE REMAINS PARALLEL ON SURFACES UP TO 10" DIAMETER.
- LASER DESIGNED TO LOCATE REFERENCE POINTS WHEN INSTALLING RACEWAYS.
- MAKES A GREAT LASER POINTER FOR BOSSING AROUND APPRENTICES!



THE JET LEVEL

PART# 45404

- CNC MILLED FROM 6061 ALUMINUM EXTRA LARGE "VD" GROOVE, STRADDLES UP TO 10" DIAMETER.
- RARE EARTH MAGNETS FOR EXTRA HOLDING.
- WATER & SHOCK RESISTANT.
- THIS CONVENIENT AND STRONG POCKET LEVEL COMES WITH 4 PRECISION VIALS OF 0, 30, 45, AND 90 DEGREES.



Make Your Job Safer, Faster, Easier

Features:

- Combines full function dual-outlet circuit tester with 220V detection and multiple direction bubble level.
- Eliminates the need for multiple tools to test and straighten any wall outlets
- **Levels • Diagnostics • Terminal Covers**

Part# 99102



AUDIBLE CIRCUIT IDENTIFIER



SOUND - It's Simple & Reliable

Features:

- 3 to 130 volt AC & DC
- Built in polarity lights
- Handy adapter fittings
- Adjustable volume control

Part# 99101



Includes **FREE** adapter Set



to be on the safe side, i better check to make sure the power is turned off before proceeding...



Prevent Electrical Shock!

- Non-contact detection of 50-1000 VAC
- Troubleshoot electrical circuits
- A simple way to locate dangerous defective grounds
- Hand held device for determining presence or absence of 50-1000 Volts AC in insulated wires, wall receptacles, fuses, junction boxes and voltage carrying electrical systems
- Outstanding safety instruments that locate defective grounds, energized circuits, induced voltage
- Senses voltage without metallic contact
- 2 replaceable "AAA" alkaline batteries included



AC Sensor
50-1000 Volts AC
Bright red glow indicates AC voltage.

Part# 99000



Ultimate AC Sensor
50-1000 Volts AC
Bright red glow indicates AC voltage AND audio alert.

Part# 99001

Note: Before using the AC Sensor or Ultimate AC Sensor, always test it on a known live voltage source to insure proper operation.



- Articulating pieces offer flexible design - curves, corners and s-curves are easily made while maintaining a completely flat profile.

- Simple installation. No tools required.

- Available in black, yellow, brown, and gray.

- Fully customizable length - From 4.5" to an unlimited length.

Please call for pricing information and part #



TEMPORARY
CABLE
GUARD



The Temporary Cable Guard helps you restore services quickly, reduces truck rolls, and eliminates downtime due to traffic or roadway activities. Perfect for new construction pre-wiring or new installations too. Available in easy-to-use 5' sections. Accommodates cable up to .750 hard-line. Withstands heavy vehicle traffic without damaging cable. Can be produced in any length through special order. Easily anchored with concrete screws if needed.

Racky Strap

Versatile Utility Strap with a Firm Hold & Quick Release!

Features:

- Holds anything up to 33lb per sq. inch
- Quality hook and loop fastener with superior shear strength rating
- Double sided hook and loop may be used with soft side up or down
- Made with heavy duty Velcro
- Great for data cable
- Available in 1/2" x 12" and 1" x 12" strips



1" straps



1/2" straps



Part# RS1005 1/2"
RS1010 1"

HOOP IT UP WITH HANDI-HOOP

"BUY 'EM USE 'EM, LOVE 'EM!"



1. Use for cable management in Telecommunication
2. Used as guides and supports to organize existing runs or assisting with new installs.
3. Install to conform to NEC and local codes.
4. A smart Hand-Hoop pathway creates the condition whereby "one man pulls" can be accomplished.



Part# HH1010

STUD BUDDIES

Fits all Standard Steel Studs & Punches



- One piece
- One hand installation
- Fire rated V.O.

Part# SB240

STEEL STUD BUSHINGS



- More cables, easier pulls
- Why Square Bushing?
70% more cross sectional area!

Part# SB220

take the fight out of those ko's with ko killers!



KO Killers

PLASTIC KNOCKOUT FILLERS



Features:

- No tools required
- Snap in with ease
- Snap out with ease
- Non-conductive, safer

Fits **thin** (1/32") and **thick** (1/8") wall thickness.

Available in 1/2" through 2" trade designations.

Part# **KOK Series**

All thumbs? Good, because that's all you need to install our plastic KO Killers. Just pop'em in. No more tools, hammers, flying metal fillers, exploding buss bars, etc. Needing no tools is a big plus, especially when working space is tight.

RAPID FIRE CONNECTORS

RAT 500

1/2"

Part# **RAT500**



RAT 750

3/4"

Part# **RAT750**

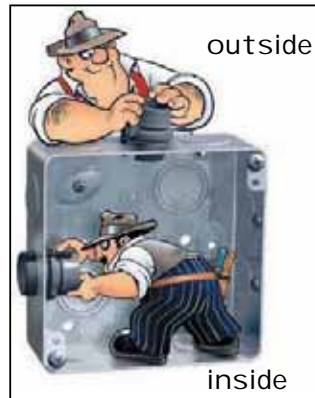


FAST – NO LOCKNUTS
EASY – NO TOOLS REQUIRED

RAT 750 3/4"	Single Cables:	8/3, 6/3
RAT 500 & TT 500 1/2"	Single Cables:	14/2, 14/3, 12/2, 12/3, 10/2, 10/3
	Two Cables:	14/2, 14/3, 12/2

TT 500

TOM TWO WAY



OLD WORK, NEW WORK
INSTALLS FROM INSIDE
OR OUTSIDE THE BOX



1/2"

Part# **TT500**

Doing some renovation work? The TT500 also installs from the inside of the box after the wire is fished in. Ingenious. The RAT500 and RAT750 feature the same quality and large wire capacity but install from the outside for use in new construction. If you like the best, try these.

LEVEL JACK

LOW VOLTAGE DATA/COM MUD RING



No tape measure • No level required

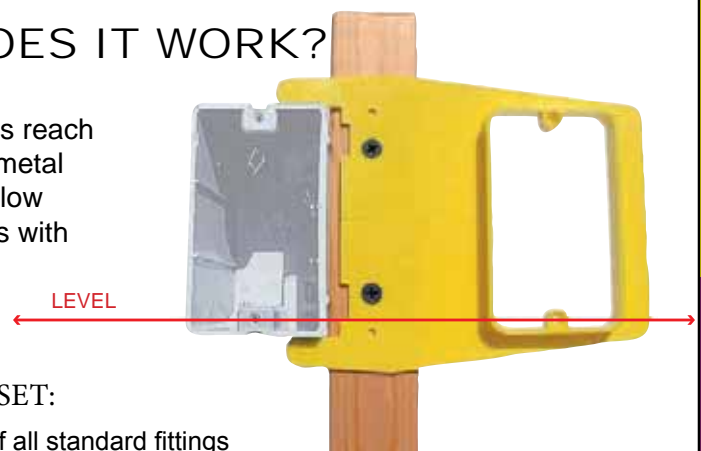
Available in 1/2", 5/8" and 1" rise

HOW DOES IT WORK?

Alignment tabs reach across wood/metal studs to level low voltage outlets with A.C. boxes.

EXTRA OFFSET:

- Allows use of all standard fittings
- Reduces A.C. interference to low voltage devices
- Improves drywall finish



Part# **LJ50R**
LJ58R
LJ100R

If you're fussy about your rough-in layout, the Level Jack makes life easy. If you're not, no one will notice because you can't screw up with the Level Jack. Just clip it on to the AC box and screw it down. No level, no tape measure, no special boxes, no special fittings required. Level Jacks fit most AC boxes. See the cartoon for details.

ROBERTSON® SCREWS!



The Original Robertson screw is the only one that guarantees a perfect "Cling Fit"



ROBERTSON "CLING FIT"



ROBERTSON bits & screws provide maximum penetration and "Cling Fit"

RECESS TOO NARROW



When the recess is too narrow, the driver does not penetrate deep enough into the recess.

RECESS TOO LARGE



When the recess is too large, the driver will wobble and come out.

INCORRECT RECESS ANGLE

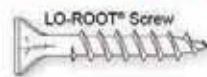


When the recess or bit is at an incorrect angle, the driver will wiggle excessively.

USE THEM WITH OUR ROBERTSON DRIVER BITS.



FLAT HEAD WOOD SCREWS



A deep thread screw with wide spacing for superior holding in softwoods, hardwoods, and particle boards.



Single lead thread (Lo-Root®) only available up to size 8. For size 10 and up, double lead thread (Kwixin®) will be available.

PAN HEAD SHEET METAL SCREWS



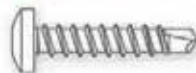
Fully threaded single lead type "A" thread, our sheet metal screws are the ideal choice for use in metal and plastics (can also be used in wood).

ROUND HEAD MACHINE SCREWS



Commercial Zinc plated for increased corrosion resistance, Robertson® machine screws are perfect for any fastening application you may need them for.

CAMTAP® SELF DRILLING SCREWS



No more pre-drilling into metals! Camtap® Screws combine the advantages of a thread forming screw and a drill point, saving valuable time on the job site.

Anchors, Washers, Nuts and Bolts



STEEL ZINC FLAT WASHERS

- Sizes from #6 - 1/2"
- other sizes and quantities available by request



STEEL ZINC HEXAGON NUTS & BOLTS

- Sizes from #6 - 1/2"
- Other sizes and quantities available by request



ANCHORS

- We have an assortment of anchors tailored to Electricians.
- Call for special request



RECYCLE THOSE OLD EXPLODING BOXES... GO GREEN WITH REUSABLE CONTAINERS FROM RACK-A-TIERS!

No more spilling screws on the job because of a flimsy box. Reusable Containers from Rack-A-Tiers are a great way to organize your van, and go green at the same time!

Package Includes: 3 Reusable Jars and 1 Van Tray



Part# REJAR

Call Us about Fire Sale Products before they're gone!

We have limited stock available!
Get them before it's too late!



TIE LIPS,
HOLE SAWS,
WIRE TERMINATOR
AND LOTS MORE!

SEE WWW.RACK-A-TIERS.COM
FOR ALL THE DETAILS!

VISIT US AT WWW.RACK-A-TIERS.COM

FACEBOOK.COM/RACKATIERS

TWITTER.COM/RACKATIERS

YOUTUBE.COM/RACKATIERS



follow us on
twitter

You Tube
Broadcast Yourself™



**JOIN OUR MAILING LIST
AND RECIEVE:**

- LATEST PRODUCT NEWS
- SPECIAL OFFERS
- TIPS & TRICKS
- CONTESTS
- CARTOONS
- NEWS ABOUT OUR **NEW** REWARDS PROGRAM!

Rack Rewards

CONTRACTOR REWARDS PROGRAM

COMING SOON



www.rack-a-tiers.com/rewards



**Tools Invented by Electricians Just Like You.
Have an Idea? ...Yours could be Next.**