



# LEW ELECTRIC FITTINGS COMPANY

SERVING THE ELECTRICAL INDUSTRY SINCE 1901



## Table of Contents

<b>Outdoor</b> .....	2-3
<b>Desktop Boxes</b> .....	4-5
<b>Residential</b>	
<b>PUPF Series</b> .....	6-10
<b>612 Series</b> .....	11
<b>RRP Series</b> .....	12-13
<b>SWB Series</b> .....	14-15
<b>812 Series</b> .....	16-17
<b>RCFB Series</b> .....	18-19
<b>PVC</b>	
<b>PVC Box and Accessories</b> .....	20-21
<b>Metal Covers</b> .....	22
<b>Non-Metallic Covers</b> .....	23
<b>Commercial</b>	
<b>Access Series</b> .....	24-25
<b>Rectangular Boxes</b> .....	26-29
<b>Round Boxes</b> .....	30-31
<b>Poke Throughs</b> .....	32
<b>Nozzles</b> .....	33
<b>Replacement Plugs</b> .....	34
<b>Low Voltage Connectivity</b> .....	35

**Catalog #0116**

Log on to  
[www.lewelectric.com](http://www.lewelectric.com)  
for complete line catalog  
and specifications

Outdoor

Desktop Boxes

Residential

PVC

Commercial

# Outdoor

2 >>>>>>

LEW ELECTRIC FITTINGS COMPANY  
For more information, call 630-665-2075  
[www.lewelectric.com](http://www.lewelectric.com)



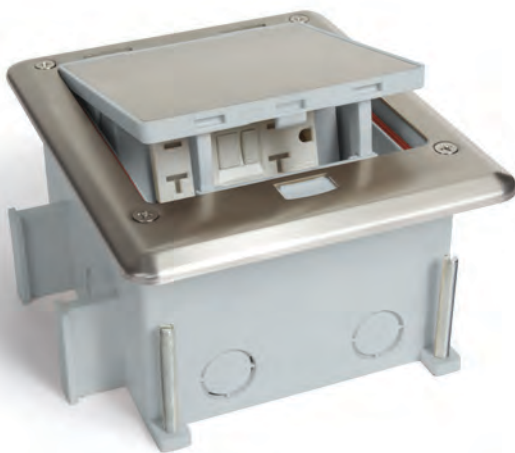
OB-1-SH >> see page 3



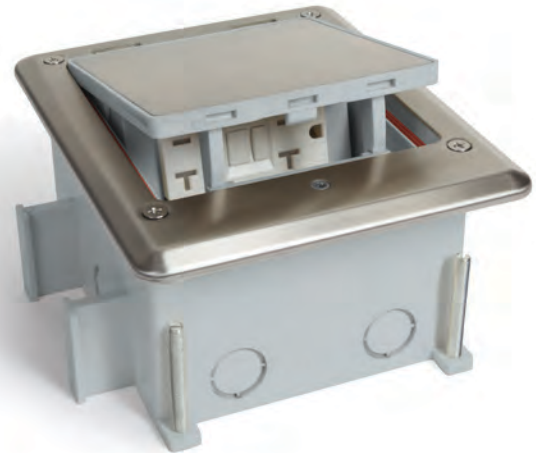
# OUTDOOR

CATALOG #	DESCRIPTION
OB-1-SP	Outdoor floor box with stainless cover; <b>Push Button Open</b> ; Fully IP66 rated water proof (when in closed position). Includes wrench for inside wire connections.
OB-1-SH	Outdoor floor box with stainless cover; <b>Hex Key Open</b> ; Fully IP66 rated water proof (when in closed position). Includes wrench for inside wire connections.
OB-1-SP-6PORT	Outdoor floor box for Comm./Data with stainless cover: <b>Push Button Open</b> ; Fully IP66 rated water proof (when in closed position). Includes wrench for inside wire connections.
OB-1-SH-6PORT	Outdoor floor box for Comm./Data with stainless cover: <b>Hex Key Open</b> ; Fully IP66 rated water proof (when in closed position). Includes wrench for inside wire connections.

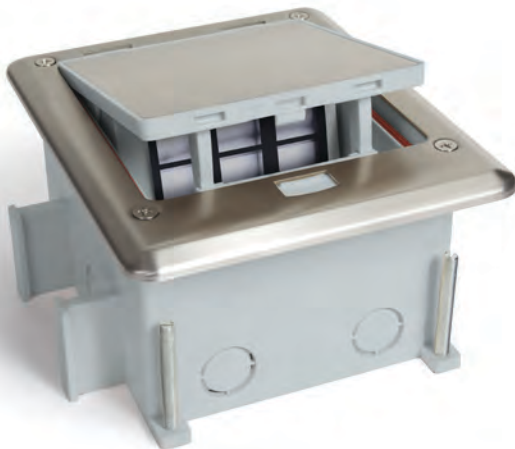
OB-1-SP



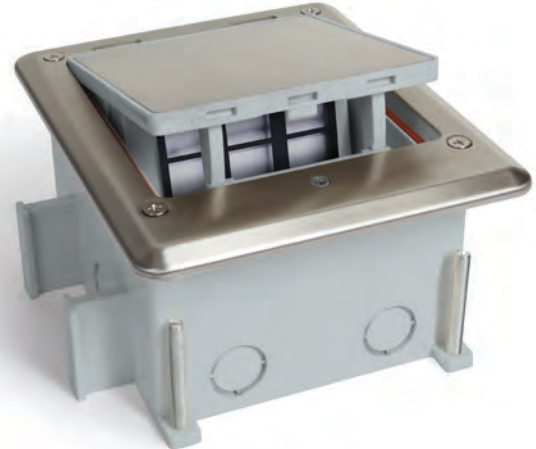
OB-1-SH



OB-1-SP-6PORT



OB-1-SH-6PORT



## BOX SPECIFICATIONS

- Cover is 6 7/8" L x 5 11/16" W
- Overall height with box is 3 5/8" minimum depth can be adjusted upwards of 1 3/4"
- Box dimensions are 5 1/4" L x 4 3/4" W (the cover hangs over more on one side of the box than the other)

## FEATURES & BENEFITS

- Intertek **IP66 RATED** BOX (when in closed position)
- UL Listed Receptacle: E60120
- Tamper Proof opening** (with hex key option)
- Gangable**; Can be used indoor or outdoor
- Includes **weather resistant** U.L. listed receptacle
- Patent protected
- Stainless Steel #316: increases general corrosion resistance, improves resistance to pitting from chloride ion solutions, and provides increased strength at elevated temperatures.

# Desktop Boxes

4 >>>>>>

LEW ELECTRIC FITTINGS COMPANY  
For more information, call 630-665-2075  
www.lewelectric.com



DTB-1-BK-1 >> see page 5



DTC-3-BK-1 >> see page 5

# DESKTOP BOXES

CATALOG #	DESCRIPTION
DTB-1-BK-1	Pop-up desktop box includes 15 amp (TR) duplex power/2 USB receptacle & (1) 6-port communication 14" L x 6 1/4" W x 5 1/8" H
DTB-3-BK-1	Clamped desktop box includes 15 amp (TR) decora receptacle & (1) 6-port communication 12 5/8" L x 3 1/4" W x 3 1/4" H
DTC-3-BK-1	Clamped desktop box includes 15 amp (TR) decora receptacles & (1) 6-port communication 17 1/4" L x 3 1/4" W x 3 1/4" H
DTD-2-BK-1	Desktop box includes 15 amp (TR) duplex power/2 USB receptacle & (1) 6-port communication 12 5/8" L x 3 1/4" W x 3 1/4" H
DTF-2-BK-3	Desktop box includes 15 amp (TR) duplex power/2 USB receptacles & (1) 6-port communication 17 1/4" L x 3 1/4" W x 3 1/4" H
PUFP-CT-B-2USB	Brass, pop out counter top plate assembly, with 15 amp (TR) duplex power/2 USB receptacle
PUFP-CT-BK-2USB	Black, pop out counter top plate assembly, with 15 amp (TR) single power/2 USB receptacle
PUFP-CT-SS-6PORT	Stainless Steel, pop out counter top plate assembly, with 6 port Comm./Data device
BTK-6PB ②	Black six port
L310-106BK ① ②	Black keystone jack; CAT3
L310-110BK ① ②	RJ45 Black CAT5E keystone jack; for internet or telephone
L310-420BK ① ②	Blank Black keystone cover
L310-HDMI-BK ① ②	HDMI Black keystone jack
L310-USB-BK ① ②	USB Black keystone jack <b>** Part #BTK-6PB, black six port device, will accommodate three USB keystone jacks in one row only.</b>

① All keystone jacks are designed to be connected to plugs on both sides and not hard wired in the back.

② Only for use with desktop box series

▶▶▶ All desktop boxes are UL listed #E363978

<p>DTB-1-BK-1</p>  <p>UL US</p>			<p>DTB-3-BK-1</p>  <p>UL US</p>		<p>DTC-3-BK-1</p>  <p>UL US</p>	
			<p>DTD-2-BK-1</p>  <p>UL US</p>		<p>DTF-2-BK-3</p>  <p>UL US</p>	
<p>PUFP-CT-B-2USB</p>  <p>ETL US</p>	<p>PUFP-CT-BK-2USB</p>  <p>ETL US</p>	<p>PUFP-CT-SS-6PORT</p>  <p>ETL US</p>	<p>BTK-6PB</p>  <p>RU US</p>	<p>L310-106BK</p>  <p>RU US</p>	<p>L310-110BK</p>  <p>RU US</p>	
			<p>L310-420BK</p>  <p>RU US</p>	<p>L310-HDMI-BK</p>  <p>RU US</p>	<p>L310-USB-BK</p>  <p>RU US</p>	

See pages 6-9 for a wide range of additional styles and colors of PUFPPop-up Counter Top Boxes.

# Residential

6 >>>>> PUFPP Series | 612 Series | RRP Series | SWB Series | 812 Series | RCFB Series

LEW ELECTRIC FITTINGS COMPANY  
For more information, call 630-665-2075  
[www.lewelectric.com](http://www.lewelectric.com)



# PUFP Counter Top Boxes

CATALOG #	DESCRIPTION
PUFP-CT-SS	Stainless Steel, pop out counter top plate assembly, with 20 amp (TR) GFI receptacle
PUFP-CT-SS-2USB	Stainless Steel, pop out counter top plate assembly, with 15 amp (TR) duplex power/2 USB receptacle
PUFP-CT-SS-6PORT	Stainless Steel, pop out counter top plate assembly, with 6 port Comm./Data device
PUFP-CT-HOSPITAL-SS	Stainless Steel, pop out counter top plate assembly, with hospital grade 20 amp (TR) duplex power/2 USB receptacle

>>>> All counter top plates 4<sup>7</sup>/<sub>8</sub> W x 4<sup>3</sup>/<sub>4</sub> L x 3<sup>1</sup>/<sub>2</sub> H and include PUFP-WB box



### FEATURES & BENEFITS

- UL recognized** 498, 514A, 943, 1059, and NEC 210.52(C).  
**CUL recognized** 22.2 #'s 42, 158, and 18.1-04.
- UL Listed Receptacle: E60120
- Pops up** when in use
- Hides in the box** when not in use
- Complies with **NEC code 406.5(E)** for use in counter tops
- For **residential or commercial** applications
- Installs in **concrete or wood** floors
- Scrub water tight** construction
- All PUFP style supplied with **tamper resistant** receptacles

### PUFP-CT-SS-6PORT



### PUFP-CT-HOSPITAL-SS



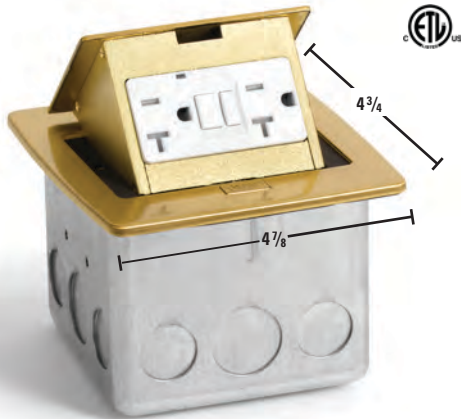
Conforms to UL STD.514A and 498;  
 Certified to CSA STD.C22.2.; No.18.1-04 and  
 42-M1984; LEW ELECTRIC FITTINGS CO

## Counter Top Boxes PUFFP

CATALOG #	DESCRIPTION
PUFP-CT-B	Brass, pop out counter top plate assembly, with 20 amp (TR) GFI receptacle
PUFP-CT-B-2USB	Brass, pop out counter top plate assembly, with 15 amp (TR) duplex power/2 USB receptacle
PUFP-CT-BK	Black, pop out counter top plate assembly, with 20 amp (TR) GFI receptacle
PUFP-CT-BK-2USB	Black, pop out counter top plate assembly, with 15 amp (TR) duplex power/2 USB receptacle
PUFP-CT-BK-6PORT	Black, pop out counter top plate assembly, with 6 port Comm./Data device
PUFP-CT-OW	Off-White, pop out counter top plate assembly, with 20 amp (TR) GFI receptacle
PUFP-CT-OW-2USB	Off-White, pop out counter top plate assembly, with 15 amp (TR) duplex power/2 USB receptacle

>>>> All counter top plates 4<sup>7</sup>/<sub>8</sub> W x 4<sup>3</sup>/<sub>4</sub> L x 3<sup>1</sup>/<sub>2</sub> H and include PUFFP-WB box

PUFP-CT-B



PUFP-CT-B-2USB



PUFP-CT-BK



PUFP-CT-BK-2USB



PUFP-CT-BK-6PORT



FEATURES & BENEFITS

- **UL recognized** 498, 514A, 943, 1059, and NEC 210.52(C).  
**CUL recognized** 22.2 #'s 42, 158, and 18.1-04.
- UL Listed Receptacle: E60120
- **Pops up** when in use
- **Hides in the box** when not in use
- Complies with **NEC code 406.5(E)** for use in counter tops
- For **residential or commercial** applications
- Installs in **concrete or wood** floors
- **Scrub water tight** construction
- All PUFFP style supplied with **tamper resistant** receptacles

PUFP-CT-OW



PUFP-CT-OW-2USB



Conforms to UL STD.514A and 498;  
Certified to CSA STD.C22.2.; No.18.1-04 and  
42-M1984; LEW ELECTRIC FITTINGS CO



# PUFP Square Floor Boxes

CATALOG #	DESCRIPTION
PUFP-SQ-BR	Brass, pop out floor plate assembly, with 15 amp (TR) duplex power receptacle
PUFP-SQ-BR-GFI	Brass, pop out floor plate assembly, with 20 amp (TR) GFI receptacle
PUFP-SQ-BR-USB	Brass, pop out floor plate assembly, with 15 amp (TR) duplex power/2 USB receptacle
PUFP-SQ-SS	Stainless Steel, pop out floor plate assembly, with 15 amp (TR) duplex power receptacle
PUFP-SQ-SS-GFI	Stainless Steel, pop out floor plate assembly, with 20 amp (TR) GFI receptacle
PUFP-SQ-SS-USB	Stainless Steel, pop out floor plate assembly, with 15 amp (TR) duplex power/2 USB receptacle

>>>> For PUFP-SQ Features and Benefits, see page 8  
 >>>> All floor plates 4<sup>3</sup>/<sub>4</sub> W x 4<sup>3</sup>/<sub>4</sub> L x 3<sup>5</sup>/<sub>8</sub> H and include PUFP-WB box



**FOR ALL PUFP-SQ**



Conforms to UL STD.514A and 498;  
 Certified to CSA STD.C22.2.; No.18.1-04 and  
 42-M1984; LEW ELECTRIC FITTINGS CO

## Covers and Boxes PUFP

CATALOG #	DESCRIPTION	DIMENSIONS	
PUFP-B	6" Brass pop out floor plate with 15 amp (TR) GFI receptacle		
PUFP-BC	6" Brass pop out floor plate with 6-Comm./Data ports		
PUFP-BD	6" Brass pop out floor plate with 15 amp (TR) decora receptacle		
PUFP-S	6" Stainless steel pop out floor plate with 15 amp (TR) GFI receptacle		
PUFP-SC	6" Stainless steel pop out floor plate with 6-Comm./Data ports		
PUFP-SD	6" Stainless steel pop out floor plate with 15 amp (TR) decora receptacle		
PUFP-LRA	Leveling ring for PUFP plates		
PUFP-LRA-HT	Leveling ring adapter for PUFP plates and Hubbell or T&B box		
CATALOG #	DESCRIPTION	A (WIDTH)	B (HEIGHT)
PUFP-HB	Concrete box for PUFP plates	4 5/16"	3 1/4"
PUFP-WB	Wood floor box for PUFP plates	3 7/8"	3 1/8"
FB	PVC floor box (must use in conjunction with PUFP-LRA to mount cover); box UL listed #514C	5"	6"

PUFP-B



PUFP-BC



**FEATURES & BENEFITS (PAGES 7-10)**

- UL recognized** 498, 514A, 943, 1059, and NEC 210.52(C).  
**CUL recognized** 22.2 #'s 42, 158, and 18.1-04.
- Pops up** when in use
- Hides in the box** when not in use
- Complies with **NEC code 406.5(E)** for use in counter tops
- For **residential or commercial** applications
- Installs in **concrete or wood** floors
- Scrub water tight** construction
- All PUFP style supplied with **tamper resistant** receptacles

PUFP-BD



PUFP-S



PUFP-SC



PUFP-SD



Conforms to UL STD.514A and 498;  
Certified to CSA STD.C22.2.; No.18.1-04 and  
42-M1984; LEW ELECTRIC FITTINGS CO

PUFP-LRA



PUFP-LRA-HT



PUFP-HB



PUFP-WB



FB



# 612 Boxes and Covers

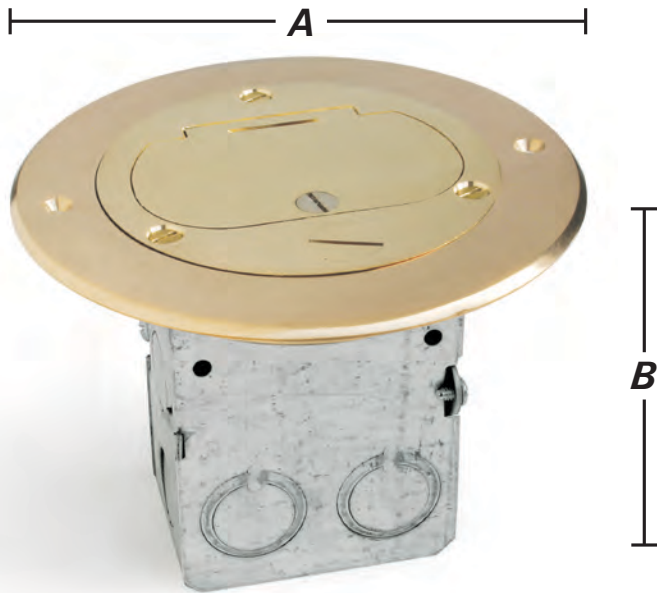
CATALOG #	DESCRIPTION	DIMENSIONS		CONDUIT OPENINGS	INTERIOR CAPACITY
		A	B		
612-RSS-1 ①	Recessed stamped steel box assembly with DFB-1-1/2 BRASS COVER and 15 amp (TR) receptacle	5 3/4"	4 3/8"	Sides (8) 1/2" Bottom (1) 1/2"	18 Cu. In.
612-RSS-1-GFI ①	Recessed stamped steel box assembly with DFB-1-1/2 BRASS COVER and decora mounting plate	5 3/4"	4 3/8"	Sides (8) 1/2" Bottom (1) 1/2"	18 Cu. In.
612-RSS-1-TEL ①	Recessed stamped steel box assembly with DFB-1-1/2 COVER and communication mounting plate	5 3/4"	4 3/8"	Sides (8) 1/2" Bottom (1) 1/2"	18 Cu. In.
612-RSS-2 ①	Recessed stamped steel box assembly with DFB-LR-1/2 BRASS COVER and 15 amp (TR) receptacle	5 3/4"	4 3/8"	Sides (8) 1/2" Bottom (1) 1/2"	18 Cu. In.
CATALOG #	DESCRIPTION				
DFB-1-1/2	Brass hinged 4" cover (1/4" thick) for duplex with 1/2" plug for Comm./Data				
DFB-1-1/2-A	Aluminum hinged 4" cover (1/4" thick) for duplex with 1/2" plug for Comm./Data				
DFB-LR-1/2	Brass dual hinged cover (1/4" thick) for duplex with 1/2" plug for Comm./Data				
DFB-LR-1/2-A	Aluminum dual hinged cover (1/4" thick) for duplex with 1/2" plug for Comm./Data				

① Add -A for Aluminum finish

>>>> UL listing: box #E345966; tamper resistant receptacle #E333616 (duplex); cover UL recognized components

>>>> For Replacement Plugs, see page 34

612-RSS-1



DFB-1-1/2



DFB-1-1/2-A



612-RSS-2



DFB-LR-1/2

DFB-LR-1/2-A



# Residential

12 >>>>>

PUPP Series

612 Series

RRP Series

SWB Series

812 Series

RFCB Series

LEW ELECTRIC FITTINGS COMPANY

For more information, call 630-665-2075

[www.lewelectric.com](http://www.lewelectric.com)



# RRP Boxes and Covers

CATALOG #	DESCRIPTION
RRP-1-BP	Brass Plated recessed floor plate assembly (single receptacle); includes 15 amp (TR) receptacle
RRP-1-BPR	Replacement cover for RRP-1-BP
RRP-1-NP	Nickel Plated recessed floor plate assembly (single receptacle); includes 15 amp (TR) receptacle
RRP-1-NPR	Replacement cover for RRP-1-NP
RRP-2 ① ②	Recessed floor plate assembly (duplex receptacle); includes 15 amp (TR) receptacle
RRP-2 ① ② -T	Recessed floor plate assembly (duplex Comm./Data); RRP-2-PQ included, see page 35
RRP-2-AR	Aluminum replacement cover for RRP-2-A
RRP-2-BR	Brass replacement cover for RRP-2
RRP-2-NSR	Nickel Silver replacement cover for RRP-2-NS
RRP-2-LR ①	Recessed floor plate flip lid assembly (duplex receptacle); includes 15 amp (TR) receptacle
RRP-2-LR ① -T	Recessed floor plate flip lid assembly (duplex Comm./Data); RRP-2-PQ included, see page 35
RRP-2-LRR	Brass replacement cover for RRP-2-LR
RRP-2-LR-AR	Aluminum replacement cover for RRP-2-LR-A

① add -A for Aluminum finish; ② add -NS for Nickel Silver finish

>>>> For Replacement Plugs, see page 34

<p style="text-align: center;"><b>RRP-1-BP</b></p> <p style="text-align: center;"><b>RRP-1-BPR</b> » Replacement cover</p>  <p style="text-align: center;">□ 2 13/16" W x 4 5/8" L</p>	<p style="text-align: center;"><b>RRP-1-NP</b></p> <p style="text-align: center;"><b>RRP-1-NPR</b> » Replacement cover</p> 	<p style="text-align: center;"><b>RRP-2</b></p> <p style="text-align: center;"><b>RRP-2-BR</b> » Replacement cover</p>  <p style="text-align: center;">□ 2 7/8" W x 5" L</p>
<p style="text-align: center;"><b>RRP-2-A</b></p> <p style="text-align: center;"><b>RRP-2-AR</b> » Replacement cover</p> 	<p style="text-align: center;"><b>RRP-2-NS</b></p> <p style="text-align: center;"><b>RRP-2-NSR</b> » Replacement cover</p> 	<p style="text-align: center;"><b>RRP-2-LR</b></p> <p style="text-align: center;"><b>RRP-2-LRR</b> » Replacement cover</p> 
<p style="text-align: center;"><b>RRP-2-LR-A</b></p> <p style="text-align: center;"><b>RRP-2-LR-AR</b> » Replacement cover</p> 	<p style="text-align: center;"><b>UL &amp; NEMA RECOGNITION</b></p> <ul style="list-style-type: none"> <li>☐ Meets NEMA WD1-1983 heavy duty requirement for display receptacle</li> <li>☐ All receptacles tamper resistant; UL listing #E333616 (duplex); E237396 (single)</li> </ul>	<p style="text-align: center;"><b>FEATURES &amp; BENEFITS</b></p> <ul style="list-style-type: none"> <li>☐ Fits any manufacturer's 3 1/2" deep switch box</li> <li>☐ Receptacle with neoprene gasket included</li> <li>☐ Water tight assembly</li> <li>☐ Adjustable up to 3/4" to accommodate any floor</li> </ul>

## Boxes and Covers **SWB**

CATALOG #	DESCRIPTION
SWB-1-BP	Brass Plated recessed floor plate assembly (single receptacle with box); includes 15 amp (TR) receptacle
RRP-1-BPR	Replacement cover for SWB-1-BP
SWB-1-NP	Nickel Plated recessed floor plate assembly (single receptacle with box); includes 15 amp (TR) receptacle
RRP-1-NPR	Replacement cover for SWB-1-NP
SWB-2 ① ②	Recessed floor plate assembly (duplex receptacle with box); includes 15 amp (TR) receptacle
SWB-2 ① ② -T	Recessed floor plate assembly (Comm./Data with box); <i>RRP-2-PQ included, see page 35</i>
RRP-2-AR	Aluminum replacement cover for SWB-2-A
RRP-2-BR	Brass replacement cover for SWB-2
RRP-2-NSR	Nickel Silver replacement cover for SWB-2-NS
SWB-2-LR ①	Recessed floor plate flip lid assembly (duplex receptacle with box); includes 15 amp (TR) receptacle
SWB-2-LR ① -T	Recessed floor plate flip lid assembly (Comm./Data with box); <i>RRP-2-PQ included, see page 35</i>
RRP-2-LRR	Brass replacement cover for SWB-2-LR
RRP-2-LR-AR	Aluminum replacement cover for SWB-2-LR-A

① add -A for Aluminum finish; ② add -NS for Nickel Silver finish

>>>> For Replacement Plugs, see page 34

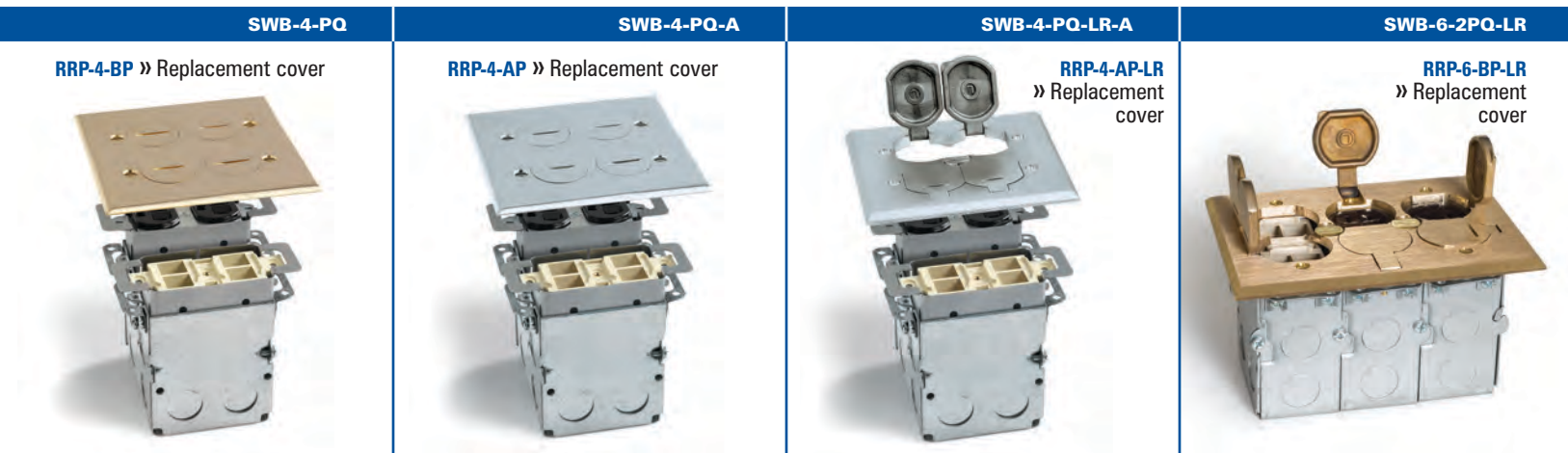
<p><b>SWB-1-BP</b></p> <p>RRP-1-BPR » Replacement cover</p>  <p>□ 2<sup>13</sup>/<sub>16</sub>" W x 4<sup>5</sup>/<sub>8</sub>" L x 4" H □ 18 Cu. In.</p>	<p><b>SWB-1-NP</b></p> <p>RRP-1-NPR » Replacement cover</p> 	<p><b>SWB-2</b></p> <p>RRP-2-BR » Replacement cover</p>  <p>□ 2<sup>7</sup>/<sub>8</sub>" W x 5" L x 4" H □ 18 Cu. In.</p>	<p><b>SWB-2-A</b></p> <p>RRP-2-AR » Replacement cover</p> 
<p><b>SWB-2-NS</b></p> <p>RRP-2-NSR » Replacement cover</p> 	<p><b>SWB-2-LR</b></p> <p>RRP-2-LRR » Replacement cover</p>  <p>□ 2<sup>7</sup>/<sub>8</sub>" W x 5" L x 4" H □ 18 Cu. In.</p>	<p><b>UL &amp; NEMA RECOGNITION</b></p> <ul style="list-style-type: none"> <li>□ Box UL #E345966</li> <li>□ Meets NEMA WD1-1983 heavy duty requirement for display receptacle</li> <li>□ All receptacles tamper resistant; UL listing #E333616 (duplex); E237396 (single)</li> </ul> <p><b>FEATURES &amp; BENEFITS</b></p> <ul style="list-style-type: none"> <li>□ Versatile <b>power</b> or <b>communications</b> applications</li> <li>□ Water tight assembly</li> <li>□ 1/2" Conduit knockouts</li> <li>□ <b>Adjustable</b> up to 3/4" to accommodate any floor</li> </ul>	<p><b>SWB-2-LR-A</b></p> <p>RRP-2-LR-AR » Replacement cover</p> 

# SWB Boxes and Covers

CATALOG #	DESCRIPTION
SWB-4-PQ ①	Two gang, divided, recessed, floor plate assembly: 1 power & 1 quad port; includes 15 amp (TR) receptacle
SWB-4-PQ-LR ①	Two gang; divided; recessed, floor plate assembly with four flip lids: 1 power & 1 quad port; includes 15 amp (TR) receptacle
SWB-4-2P ①	Two gang, divided, recessed, floor plate assembly: 2 power; includes 15 amp (TR) receptacles
SWB-4-2P-LR ①	Two gang; divided; recessed, floor plate assembly with four flip lids: 2 power; includes 15 amp (TR) receptacles
SWB-4-2Q ①	Two gang, divided, recessed, floor plate assembly: 2 quad ports
SWB-4-2Q-LR ①	Two gang; divided; recessed, floor plate assembly with four flip lids: 2 quad ports
RRP-4-AP	Aluminum replacement cover for SWB-4 series (screw plug)
RRP-4-AP-LR	Aluminum replacement cover for SWB-4 series (flip lid)
RRP-4-BP	Brass replacement cover for SWB-4 series (screw plug)
RRP-4-BP-LR	Brass replacement cover for SWB-4 series (flip lid)
SWB-6-P2Q-LR ①	Three gang, divided, recessed, floor plate assembly: 1 power & 2 quad port ( <b>flip lid version</b> ); includes 15 amp (TR) receptacle
SWB-6-2PQ-LR ①	Three gang, divided, recessed, floor plate assembly: 2 power & 1 quad port ( <b>flip lid version</b> ); includes 15 amp (TR) receptacles
SWB-6-3P-LR ①	Three gang, divided, recessed, floor plate assembly: 3 power ( <b>flip lid version</b> ); includes 15 amp (TR) receptacles
SWB-6-3Q-LR ①	Three gang, divided, recessed, floor plate assembly: 3 quad port ( <b>flip lid version</b> )
RRP-6-BP-LR	Brass replacement cover for SWB-6 series ( <b>flip lid</b> )
RRP-6-AP-LR	Aluminum replacement cover for SWB-6 series ( <b>flip lid</b> )
SWB-6-P2Q ①	Three gang, divided, recessed, floor plate assembly: 1 power & 2 quad port ( <b>screw plug version</b> ); includes 15 amp (TR) receptacle
SWB-6-2PQ ①	Three gang, divided, recessed, floor plate assembly: 2 power & 1 quad port ( <b>screw plug version</b> ); includes 15 amp (TR) receptacles
SWB-6-3P ①	Three gang, divided, recessed, floor plate assembly: 3 power ( <b>screw plug version</b> ); includes 15 amp (TR) receptacles
SWB-6-3Q ①	Three gang, divided, recessed, floor plate assembly: 3 quad port ( <b>screw plug version</b> )
RRP-6-BP	Brass replacement cover for SWB-6 series ( <b>screw plug lid</b> )
RRP-6-AP	Aluminum replacement cover for SWB-6 series ( <b>screw plug lid</b> )

① add -A for Aluminum finish

»»»» For Replacement Plugs, see page 34



### UL & NEMA RECOGNITION

- Box UL #E345966
- Meets NEMA WD1-1983 heavy duty requirement for display receptacle
- All receptacles tamper resistant; UL listing #E333616 (duplex); E237396 (single)

### FEATURES & BENEFITS

- Versatile **power** or **communications** applications
- Water tight assembly
- 1/2" Conduit knockouts
- Adjustable** up to 3/4" to accommodate any floor

### SWB-6-3P

RRP-6-BP » Replacement cover



## Boxes 812

CATALOG #	DESCRIPTION	DIMENSIONS		CONDUIT OPENINGS	INTERIOR CAPACITY
		A	B		
812	Cast iron round floor box with receptacle Does not include cover	4"	3"	Sides (2)- $\frac{3}{4}$ " & (2)- $\frac{1}{2}$ " Bottom (2)- $\frac{1}{2}$ "	14.5 Cu. In.
812-DFB	Floor box furnished with 523-DP BRASS COVER & 15 amp (TR) receptacle	4"	3 $\frac{1}{8}$ "	Sides (2)- $\frac{3}{4}$ " & (2)- $\frac{1}{2}$ " Bottom (2)- $\frac{1}{2}$ "	14.5 Cu. In.
812-DFB-A	Floor box furnished with 523-DP-A ALUMINUM COVER & 15 amp (TR) receptacle	4"	3 $\frac{1}{8}$ "	Sides (2)- $\frac{3}{4}$ " & (2)- $\frac{1}{2}$ " Bottom (2)- $\frac{1}{2}$ "	14.5 Cu. In.
812-DFB-NS	Floor box furnished with 523-DP-NS NICKEL SILVER COVER & 15 amp (TR) receptacle	4"	3 $\frac{1}{8}$ "	Sides (2)- $\frac{3}{4}$ " & (2)- $\frac{1}{2}$ " Bottom (2)- $\frac{1}{2}$ "	14.5 Cu. In.
812-DFB-W/524	Floor box furnished with 524 BRASS COVER and tel. jack	4"	3 $\frac{1}{8}$ "	Sides (2)- $\frac{3}{4}$ " & (2)- $\frac{1}{2}$ " Bottom (2)- $\frac{1}{2}$ "	14.5 Cu. In.
812-DFB-LR	Floor box furnished with DFB-LR BRASS COVER & 15 amp (TR) receptacle	4"	3 $\frac{3}{8}$ "	Sides (2)- $\frac{3}{4}$ " & (2)- $\frac{1}{2}$ " Bottom (2)- $\frac{1}{2}$ "	14.5 Cu. In.
812-DFB-LR-A	Floor box furnished with DFB-LR-A ALUMINUM COVER & 15 amp (TR) receptacle	4"	3 $\frac{3}{8}$ "	Sides (2)- $\frac{3}{4}$ " & (2)- $\frac{1}{2}$ " Bottom (2)- $\frac{1}{2}$ "	14.5 Cu. In.
812-DFB-LR-W/2XLR	Floor box furnished with DFB-LR BRASS COVER & dual XLR microphone jacks	4"	3 $\frac{3}{8}$ "	Sides (2)- $\frac{3}{4}$ " & (2)- $\frac{1}{2}$ " Bottom (2)- $\frac{1}{2}$ "	14.5 Cu. In.
812-DFB-LR-W/2XLR-A	Floor box furnished with DFB-LR-A ALUMINUM COVER & dual XLR microphone jacks	4"	3 $\frac{3}{8}$ "	Sides (2)- $\frac{3}{4}$ " & (2)- $\frac{1}{2}$ " Bottom (2)- $\frac{1}{2}$ "	14.5 Cu. In.
812-DFB-W/DFB-1	Floor box furnished with DFB-1 BRASS COVER & 15 amp (TR) receptacle	4"	3 $\frac{3}{8}$ "	Sides (2)- $\frac{3}{4}$ " & (2)- $\frac{1}{2}$ " Bottom (2)- $\frac{1}{2}$ "	14.5 Cu. In.
812-DFB-W/DFB-1-A	Floor box furnished with DFB-1-A ALUMINUM COVER & 15 amp (TR) receptacle	4"	3 $\frac{3}{8}$ "	Sides (2)- $\frac{3}{4}$ " & (2)- $\frac{1}{2}$ " Bottom (2)- $\frac{1}{2}$ "	14.5 Cu. In.
40201-001	Ivory telephone jack for 812 series				

>>>> 812 Series UL listing #514A, #489H and CUL recognized 22.2 #18.1-04

>>>> For Replacement Plugs, see page 34





# 812 Covers and Flanges

CATALOG #	DESCRIPTION
DFB-LR ①	Brass, dual hinged cover (1/4" thick) for duplex
DFB-LR-A ①	Aluminum, dual hinged cover (1/4" thick) for duplex
DFB-1 ①	Brass, hinged cover (1/4" thick) for duplex
DFB-1-A ①	Aluminum, hinged cover (1/4" thick) for duplex
TCP-1 ③	Brass flanged cover, with 2" - 1/2" combo plug for Comm./Data. Or single receptacle
TCP-1-NS ③	Nickel Silver flanged cover, with 2" - 1/2" combo plug for Comm./Data. Or single receptacle
TCP-2 ③	5 3/4" Brass flanged cover, with (2) 1 1/2", screw plugs for duplex power or Comm./Data
TCP-2-A ③	5 3/4" Aluminum flanged cover, with (2) 1 1/2", screw plugs for duplex power or Comm./Data
TCP-2-NS ③	5 3/4" Nickel Silver flanged cover, with (2) 1 1/2", screw plugs for duplex power or Comm./Data
TCP-2-LR ③	5 3/4" Seamless Brass flanged cover, with dual flip lid and duplex mount. Plt.
TCP-2-LR-A ③	5 3/4" Seamless Aluminum flanged cover, with dual flip lid and duplex mount. Plt.
523-DP ①	Brass, cover (1/8" thick) with (2) 1 1/2" screw plugs for duplex
523-DP-A ①	Aluminum, cover (1/8" thick) with (2) 1 1/2" screw plugs for duplex
523-DP-NS ①	Nickel Silver, cover (1/8" thick) with (2) 1 1/2" screw plugs for duplex (C/US UL Listed)
524 ①	Brass, cover (1/8" thick) with 2" - 1/2" combo plug for Comm./Data
SCF-1 ②	Brass, flange 5 1/4" diameter
SCF-1-CP ②	Clear plastic, flange 5 3/4" diameter
SCF-1-A ②	Aluminum, flange 5 1/4" diameter
TCP-GR1	Brass goof ring for 812 series; O.D. 7 1/2", I.D. 4"
TCP-GR2	Brass goof ring for 812 series; O.D. 7 1/2", I.D. 4 1/2"

>>>> ① 4" cover; ② SCF-1 Series fits 4" plates only; ③ 5 3/4" cover

>>>> UL recognized components

>>>> For Replacement Plugs, see page 34



» Also available in Nickel Silver

» Also available in Aluminum (C/US UL Listed)

# Residential

LEW ELECTRIC FITTINGS COMPANY  
For more information, call 630-665-2075  
www.lewelectric.com

18 >>>>> PUFF Series | 612 Series | RRP Series | SWB Series | 812 Series | RCFB Series



RCFB-1 >> see page 19

# RCFB Boxes and Covers

CATALOG #	DESCRIPTION
RCFB-1	Recessed hybrid floor box
RCFB-1-BP	Replacement cover for RCFB-1
RCFB-1-A	Aluminum recessed hybrid floor box
RCFB-1-AP	Aluminum replacement cover for RCFB-1-A
RCFB-2	Recessed hybrid two-gang floor box
RCFB-2-BP	Replacement cover for RCFB-2

>>>> For Replacement Plugs, see page 34

RCFB-1



□ 5" W x 5" L x 4" H □ 36 Cu. In.

RCFB-1-BP



RCFB-1-AP



RCFB-1-A



RCFB-2



□ 5 1/16" W x 8 5/8" L x 4" H □ 72 Cu. In.

RCFB-2-BP



**UL & NEMA**

- Box UL #E345966
- Tamper resistant receptacle UL #E333616 (duplex)

**FEATURES & BENEFITS**

- Water tight close up plugs
- Rubber grommets provided for wire protection

**PVC**

20 >>>>>>

PVC Box & Accessories

| Metal Covers

| Non-Metallic Covers

LEW ELECTRIC FITTINGS COMPANY

For more information, call 630-665-2075

[www.lewelectric.com](http://www.lewelectric.com)



# PVC Box & Accessories

CATALOG #	DESCRIPTION	DIMENSIONS		INTERIOR CAPACITY
		A	B	
FB	Round PVC box with (2) 3/4" hubs, (2) 1" hubs, (2) 3/4" reducers, (4) 1/2" reducers, No Pre-Formed Slot for Partitioning (slide <i>not</i> included). <b>ADAPTER RING NOT INCLUDED.</b>	5"	6"	90 Cu. In. (15.5/In.)
FBKIT	Round PVC box with (2) 3/4" hubs, (2) 1" hubs, (2) 3/4" reducers, (4) 1/2" reducers, No Pre-Formed Slot for Partitioning. <b>SLIDE AND ADAPTER RING INCLUDED.</b>	5"	6"	90 Cu. In. (15.5/In.)
FBLEW	Round PVC box with (2) 3/4" hubs, (2) 1" hubs, (2) 3/4" reducers, (4) 1/2" reducers, pre-formed partitioning slot (slide <i>not</i> included). <b>ADAPTER RING INCLUDED.</b>	5"	6"	90 Cu. In. (15.5/In.)
CATALOG #	DESCRIPTION			
LRA	Leveling ring adapter for round flanged cover plates			
LRA-HT ①	Leveling ring adapter for Hubbell and Thomas and Betts round plastic box			
PUFP-LRA	Leveling ring for PUPF plates			
PUFP-LRA-HT ②	Leveling ring adapter for Hubbell and Thomas and Betts round plastic box and LEW PUPF cover			
SLIDE	Slide partition for FB & FBLEW floor boxes			

① LEW part # LRA included with LRA-HT

② LEW part # PUPF-LRA included with PUPF-LRA-HT

>>>> UL listing #514C



## Metal Covers PVC

CATALOG #	DESCRIPTION
PUFP-B 1 2	6" Brass pop up floor plate with with 20 amp (TR) GFI receptacle
PUFP-BC 1 2	6" Brass pop up floor plate with 6-Comm./Data ports
PUFP-BD 1 2	6" Brass pop up floor plate with 15 amp (TR) decora receptacle
PUFP-S 1 2	6" Stainless steel pop up floor plate with with 20 amp (TR) GFI receptacle
PUFP-SC 1 2	6" Stainless steel pop up floor plate with 6-Comm./Data ports
PUFP-SD 1 2	6" Stainless steel pop up floor plate with 15 amp (TR) decora receptacle
TCP-1	Brass flanged cover, with 2" - 1/2" combo plug for Comm./Data. Or single receptacle
TCP-1-NS	Nickel Silver flanged cover, with 2" - 1/2" combo plug for Comm./Data. Or single receptacle
TCP-1-3/4"	Brass flanged cover, with 2" - 3/4" combo plug for Comm./Data. Or single receptacle
TCP-1-1"	Brass flanged cover, with 2" - 1" combo plug for Comm./Data. Or single receptacle
TCP-1-PC	Brass flanged cover, with 2" - 1/2" combo plug for Comm./Data. Or single recept., & (2) 1/2" plugs for Comm./Data
TCP-2	Brass flanged cover, with (2) 1 1/2", screw plugs for duplex power or Comm./Data
TCP-2-A	Aluminum flanged cover, with (2) 1 1/2", screw plugs for duplex power or Comm./Data
TCP-2-NS	Nickel Silver flanged cover, with (2) 1 1/2", screw plugs for duplex power or Comm./Data
TCP-2-LR	Seamless Brass flanged cover, with dual flip lid and duplex mount. PLT.
TCP-2-LR-A	Seamless Aluminum flanged cover, with dual flip lid and duplex mount. Plt.
TCP-2-PC	Brass flanged cover, with (2) 1 1/2" screw plugs for duplex power or Comm./Data., & (2) 1/2" plugs for Comm./Data
TCP-2-PC-A	Aluminum flanged cover, with (2) 1 1/2" screw plugs for duplex power or Comm./Data., & (2) 1/2" plugs for Comm./Data

>>>> All covers 5 3/4" except: 1 6"; 2 Requires PUFP-LRA to mount to FB box

>>>> UL recognized components: PUFP series UL recognized 498; ETL listed P63

>>>> For Replacement Plugs, see page 34



# PVC *Non-Metallic Covers*

CATALOG #	DESCRIPTION
PFC-B	Brown plastic flanged cover, with single flip lid & duplex mount. PLT.
PFC-B-GFI	Brown plastic flanged cover, with single flip lid & GFI/decora mount. PLT.
PFC-B-TEL	Brown plastic flanged cover, with single flip lid & single recept/data PLT.
PFC-E	Ebony plastic flanged cover, with single flip lid & duplex mount. PLT.
PFC-E-GFI	Ebony plastic flanged cover, with single flip lid & GFI/decora mount. PLT.
PFC-E-TEL	Ebony plastic flanged cover, with single flip lid & single recept/data PLT.
PFC-G	Gold plastic flanged cover, with single flip lid & duplex mount. PLT.
PFC-G-GFI	Gold plastic flanged cover, with single flip lid & GFI/decora mount. PLT.
PFC-G-TEL	Gold plastic flanged cover, with single flip lid & single recept/data PLT.
PFC-S	Gray plastic flanged cover, with single flip lid & duplex mount. PLT.
PFC-S-GFI	Gray plastic flanged cover, with single flip lid & GFI/decora mount. PLT.
PFC-S-TEL	Gray plastic flanged cover, with single flip lid & single recept/data PLT.
PFC-T	Tan plastic flanged cover, with single flip lid & duplex mount. PLT.
PFC-T-GFI	Tan plastic flanged cover, with single flip lid & GFI/decora mount. PLT.
PFC-T-TEL	Tan plastic flanged cover, with single flip lid & single recept/data PLT.

>>>> All covers listed above are 5 3/4"; UL listing #514C

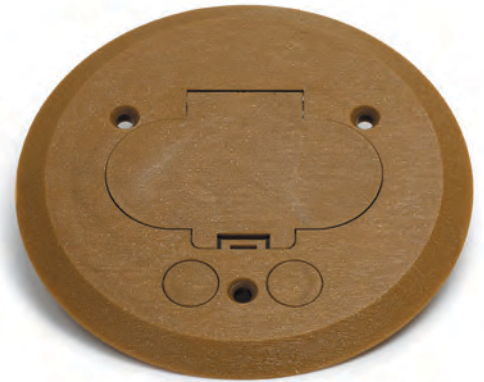
PFC-B



PFC-E



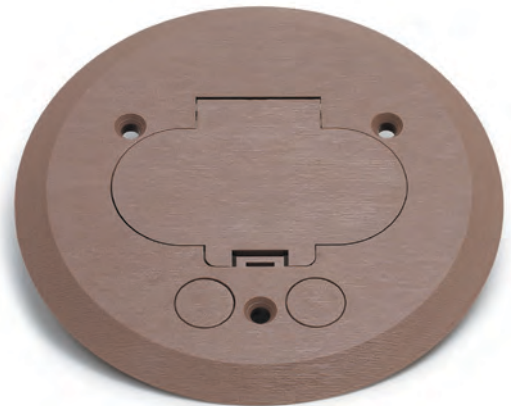
PFC-G



PFC-S



PFC-T





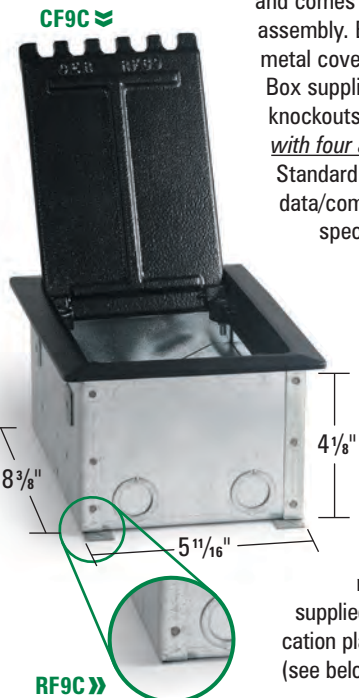
CF10C » see page 25



# ACCESS Floorboxes

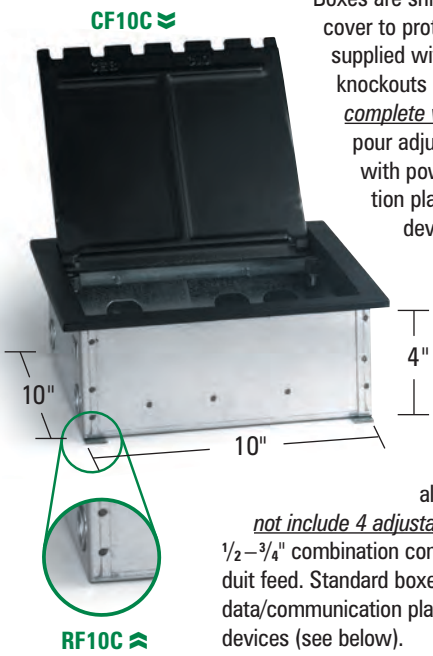
RF9C & RF10C  
 CSA #79115

**THE CF9C SERIES BOX** is a dual service floor box for use with conduit in a **poured concrete floor**. The box is constructed of 16 ga. galvanized steel and comes complete with 1/4" cast aluminum cover assembly. Boxes are shipped with disposable sheet metal cover to protect box during concrete pour. Box supplied with two 1/2-3/4" combination conduit knockouts each end for conduit feed and complete with four adjustable legs for pre-pour adjustment. Standard boxes supplied with power plates and data/communication plates punched to accept specified devices (see below).



**THE RF9C SERIES BOX** is a dual service **raised floor box**. The box is constructed of 16 Ga. Galvanized steel and is supplied complete with 1/4" cast aluminum cover assembly. Box supplied with two 1/2-3/4" combination conduit knockouts at each end (does not include 4 adjustable legs). RF9 series access floor boxes are constructed with multiple compartments to suit application. Standard boxes supplied with power plates and data/communication plates punched to accept specified devices (see below).

**THE CF10C SERIES BOX** is a large capacity dual service floor box for use with conduit in a **poured concrete floor**. The box is constructed of 16 ga. galvanized steel and comes complete with a 1/4" cast aluminum cover assembly. Boxes are shipped with disposable sheet metal cover to protect box during concrete pour. Box supplied with two 1/2-3/4" combination conduit knockouts each end for conduit feed and complete with four adjustable legs for pre-pour adjustment. Standard boxes supplied with power plates and data/communication plates punched to accept specified devices (see below).



**THE RF10C SERIES BOX** is a large capacity dual service floor box for use in a **raised floor**. The box is constructed of 16 ga. galvanized steel and comes complete with 1/4" cast aluminum cover assembly (does not include 4 adjustable legs). Box supplied with two 1/2-3/4" combination conduit knockouts each end for conduit feed. Standard boxes supplied with power plates and data/communication plates punched to accept specified devices (see below).

## Power Device Plate Specifications

Receptacles are not normally supplied with boxes, contact factory for pricing with details of any receptacles that are required to be supplied with boxes.

- |                           |                         |
|---------------------------|-------------------------|
| 1 = 1 std duplex cut out  | 3 = 1 "Decora" cut out  |
| 2 = 2 std duplex cut outs | 4 = 2 "Decora" cut outs |

**Note:** Decora cut outs measure 1.3125" x 2.66"

## Power Device Plate Specifications

Receptacles are not normally supplied with boxes, contact factory for pricing with details of any receptacles that are required to be supplied with boxes.

- |                           |                           |
|---------------------------|---------------------------|
| 1 = 1 std duplex cut out  | 5 = 3 std duplex cut outs |
| 2 = 2 std duplex cut outs | 6 = 4 std duplex cut outs |
| 3 = 1 "Decora" cut out    | 7 = 3 "Decora" cut outs   |
| 4 = 2 "Decora" cut outs   | 8 = 4 "Decora" cut outs   |

**Note:** Decora cut outs measure 1.3125" x 2.66"

## Tel/Data Device Plate Specifications

Receptacles are not normally supplied with boxes, contact factory for pricing with details of any receptacles that are required to be supplied with boxes.

- |                         |                       |                       |
|-------------------------|-----------------------|-----------------------|
| A = 1 "Decora" cut out  | C = 1 "RJ45" cut out  | E = 3 "RJ45" cut outs |
| B = 2 "Decora" cut outs | D = 2 "RJ45" cut outs | F = 4 "RJ45" cut outs |

**Note:** Decora cut outs measure 1.3125" x 2.66"; RJ45 cut outs measure .765" x .585"

## Tel/Data Device Plate Specifications

Receptacles are not normally supplied with boxes, contact factory for pricing with details of any receptacles that are required to be supplied with boxes.

- |                         |                       |                         |
|-------------------------|-----------------------|-------------------------|
| A = 1 "Decora" cut out  | E = 3 "RJ45" cut outs | J = 7 "RJ45" cut outs   |
| B = 2 "Decora" cut outs | F = 4 "RJ45" cut outs | K = 8 "RJ45" cut outs   |
| C = 1 "RJ45" cut out    | G = 5 "RJ45" cut outs | M = 3 "Decora" cut outs |
| D = 2 "RJ45" cut outs   | H = 6 "RJ45" cut outs | P = 4 "Decora" cut outs |

**Note:** Decora cut outs measure 1.3125" x 2.66"; RJ45 cut outs measure .765" x .585"

## Standard Ordering Specifications

- Specify **box type** [CF9C]
- Specify **power device plate** [e.g. CF9C2 = 2 std duplex cut outs.]
- Specify **Tel/Data device plates** [e.g. CF9C2C = 2 std duplex cut outs for power, 1 RJ45 for Tel/Data.]

## Standard Ordering Specifications

- Specify **box type** [CF10C]
- Specify **power device plate** [e.g. CF10C6 = 4 std duplex cut outs.]
- Specify **Tel/Data device plates** [e.g. CF10C6BD = 4 duplex cut outs for power, 2 Decora & 2 RJ45 for Tel/Data.]

## Rectangular Boxes—Covers & Flanges 1101

CATALOG #	DESCRIPTION
1101-SMB	One gang, deep stamped steel floor box »»» 3 7/8" H x 4 13/16" L x 4 13/16" W; 50.3 Cu. In.
1102-SMB	Two gang, deep stamped steel floor box »»» 3 7/16" H x 7 7/8" L x 4 13/16" W; 48.5 Cu. In. per gang
1103-SMB	Three gang, deep stamped steel floor box »»» 3 3/8" H x 11 1/16" L x 4 11/16" W; 38.3 Cu. In. per gang
SH-1101-SMB	One gang, shallow stamped steel floor box »»» 2 13/16" H x 4 13/16" L x 4 13/16" W; 31.5 Cu. In.
SH-1102-SMB	Two gang, shallow stamped steel floor box »»» 2 9/16" H x 7 7/8" L x 4 13/16" W; 33.5 Cu. In. per gang
SH-1103-SMB	Three gang, shallow stamped steel floor box »»» 2 15/32" H x 11 1/16" L x 4 11/16" W; 25.5 Cu. In. per gang
1101-DBE ① ②	One gang, brass frame »»» 4 5/16" L x 3 11/32" W
1102-DBE ① ②	Two gang, brass frame »»» 6 3/8" L x 4 3/8" W
1103-DBE ① ②	Three gang, brass frame »»» 9 5/16" L x 4 5/16" W

① Add -A for Aluminum tile frame; ② Add -B for Brass tile frame

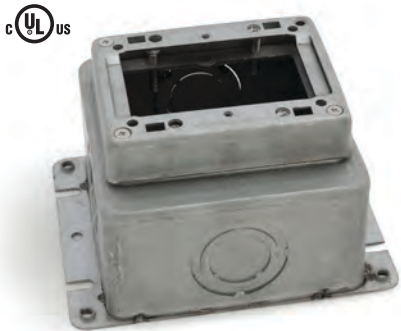
>>>> All boxes UL listing #514A

>>>> Tile frames not included with stamped steel floor box. All tile frames 5/8" overall height

>>>> All boxes pre-pour adjustment of 2 1/4" and after pour adjustment 1/2"

>>>> Knockouts: Deep – Sides and Bottom: 3/4", 1", 1 1/4"; Shallow – Sides: 1/2" and 3/4"; Bottom: 3/4", 1" and 1 1/4"

1101-SMB



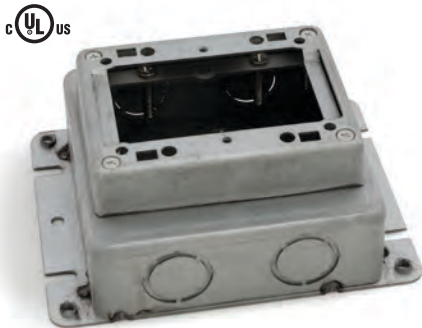
1102-SMB



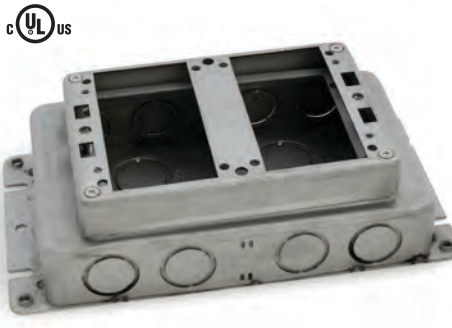
1103-SMB



SH-1101-SMB



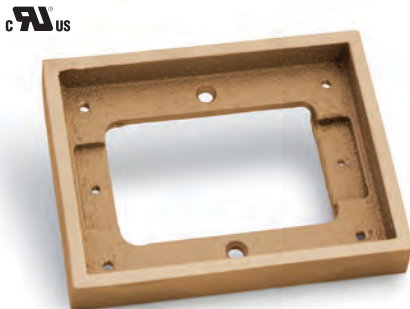
SH-1102-SMB



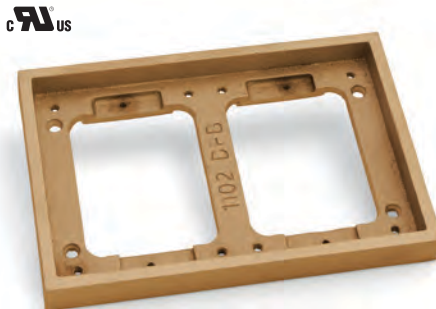
SH-1103-SMB



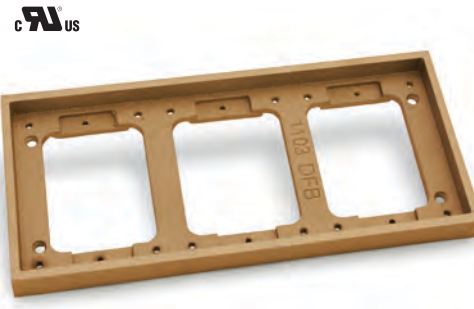
1101-DBE-B



1102-DBE-B



1103-DBE-B



# 1101 Rectangular Boxes—Covers & Flanges

CATALOG #	DESCRIPTION
6304-DFB-1	Brass, hinged 2 7/8" x 3 7/8" cover (1/4" thick) for duplex
6304-DFB-1-A	Aluminum, hinged 2 7/8" x 3 7/8" cover (1/4" thick) for duplex
6304-DFB-1-TEL	Brass, hinged 2 7/8" x 3 7/8" cover (1/4" thick) for Comm./Data
6304-DFB-1-TEL-A	Aluminum, hinged 2 7/8" x 3 7/8" cover (1/4" thick) for Comm./Data
6304-DFB-1-GFI	Brass, hinged 2 7/8" x 3 7/8" cover (1/4" thick) for GFI or decora receptacle
6304-DFB-1-GFI-A	Aluminum, hinged 2 7/8" x 3 7/8" cover (1/4" thick) for GFI or decora receptacle
6304-DFB-LR	Brass, dual hinged 2 7/8" x 3 7/8" cover (1/4" thick) for duplex
6304-DFB-LR-A	Aluminum, dual hinged 2 7/8" x 3 7/8" cover (1/4" thick) for duplex
6304-DP	Brass, 2 7/8" x 3 7/8" cover (1/8" thick) with (2) 1 1/2" screw plugs for duplex
6304-DP-A	Aluminum, 2 7/8" x 3 7/8" cover (1/8" thick) with (2) 1 1/2" screw plugs for duplex
6304-S	Brass, 2 7/8" x 3 7/8" cover (1/8" thick) with 2" - 1/2" combo plug for Comm./Data
6304-S-A	Aluminum, 2 7/8" x 3 7/8" cover (1/8" thick) with 2" - 1/2" combo plug for Comm./Data
CF-1101-DFB	Single gang Brass carpet flange, 5 11/32" x 6 1/4"
CF-1101-DFB-A	Single gang Aluminum carpet flange, 5 11/32" x 6 1/4"
CF-1102-DFB	Two gang Brass carpet flange, 6 1/4" x 8 1/4"
CF-1102-DFB-A	Two gang Aluminum carpet flange, 6 1/4" x 8 1/4"
CF-1103-DFB	Three gang Brass carpet flange, 6 1/4" x 11 1/8"
CF-1103-DFB-A	Three gang Aluminum carpet flange, 6 1/4" x 11 1/8"

>>>> UL recognized components  
 >>>> For Replacement Plugs, see page 34



## Rectangular Boxes—Fully Adjustable 1101

CATALOG #	DESCRIPTION	DIMENSIONS			ADJUST AFTER	INTERIOR CAPACITY	CONDUIT OPENINGS	MAX TAP
		H	L	W				
1101-58 ①	Deep, single gang cast box <i>Fully adjustable</i>	3 3/4"	4 1/4"	3 3/8"	3/8"	13 Cu. In. (Min)	Sides (4) 3/4"	1 1/4"
1102-58 ①	Deep, two gang cast box (partitioned), <i>Fully adjustable</i>	3 3/4"	6 3/8"	4 1/4"	3/8"	26 Cu. In. (Min) (13 Cu. In./Gang)	Sides (6) 3/4"	1 1/4"
1103-58 ①	Deep, three gang cast box (partitioned), <i>Fully adjustable</i>	3 3/4"	9 1/4"	4 1/4"	3/8"	40 Cu. In. (Min) (13 Cu. In./Gang)	Sides (8) 3/4"	1 1/4"

① Add -A for Aluminum finish

>>>> All boxes UL listing #514A, #489H

1101-58



1102-58



1103-58



## Rectangular Boxes—Semi Adjustable 1101

CATALOG #	DESCRIPTION	DIMENSIONS			ADJUST BEFORE	INTERIOR CAPACITY	CONDUIT OPENINGS	MAX TAP
		H	L	W				
SH-1101-58 ①	Shallow, single gang cast box <i>Semi adjustable</i>	2 1/4"	4 1/4"	3 3/8"	1"	16 Cu. In.	Sides (4) 3/4"	1"
SH-6262-58 ①	Shallow, two gang cast box (partitioned), <i>Semi adjustable</i>	2 1/4"	6 3/8"	4 1/4"	1"	25 Cu. In. (12.5 Cu. In./Gang)	Sides (6) 3/4"	1"
SH-6263-58 ①	Shallow, three gang cast box (partitioned), <i>Semi adjustable</i>	2 1/4"	9 1/4"	4 1/4"	1"	50 Cu. In. (16.5 Cu. In./Gang)	Sides (8) 3/4"	1"

① Add -A for Aluminum finish

>>>> All boxes UL listing #514A

SH-1101-58



SH-6262-58



SH-6263-58



# 1101 Rectangular Boxes—Covers & Flanges

CATALOG #	DESCRIPTION
6304-DFB-1	Brass, hinged 2 7/8" x 3 7/8" cover (1/4" thick) for duplex
6304-DFB-1-A	Aluminum, hinged 2 7/8" x 3 7/8" cover (1/4" thick) for duplex
6304-DFB-1-TEL	Brass, hinged 2 7/8" x 3 7/8" cover (1/4" thick) for Comm./Data
6304-DFB-1-TEL-A	Aluminum, hinged 2 7/8" x 3 7/8" cover (1/4" thick) for Comm./Data
6304-DFB-1-GFI	Brass, hinged 2 7/8" x 3 7/8" cover (1/4" thick) for GFI or decora receptacle
6304-DFB-1-GFI-A	Aluminum, hinged 2 7/8" x 3 7/8" cover (1/4" thick) for GFI or decora receptacle
6304-DFB-LR	Brass, dual hinged 2 7/8" x 3 7/8" cover (1/4" thick) for duplex
6304-DFB-LR-A	Aluminum, dual hinged 2 7/8" x 3 7/8" cover (1/4" thick) for duplex
6304-DP	Brass, 2 7/8" x 3 7/8" cover (1/8" thick) with (2) 1 1/2" screw plugs for duplex
6304-DP-A	Aluminum, 2 7/8" x 3 7/8" cover (1/8" thick) with (2) 1 1/2" screw plugs for duplex
6304-S	Brass, 2 7/8" x 3 7/8" cover (1/8" thick) with 2" - 1/2" combo plug for Comm./Data
6304-S-A	Aluminum, 2 7/8" x 3 7/8" cover (1/8" thick) with 2" - 1/2" combo plug for Comm./Data
CF-1101-DFB	Single gang Brass carpet flange, 5 11/32" x 6 1/4"
CF-1101-DFB-A	Single gang Aluminum carpet flange, 5 11/32" x 6 1/4"
CF-1102-DFB	Two gang Brass carpet flange, 6 1/4" x 8 1/4"
CF-1102-DFB-A	Two gang Aluminum carpet flange, 6 1/4" x 8 1/4"
CF-1103-DFB	Three gang Brass carpet flange, 6 1/4" x 11 1/8"
CF-1103-DFB-A	Three gang Aluminum carpet flange, 6 1/4" x 11 1/8"

>>>> UL recognized components  
 >>>> For Replacement Plugs, see page 34



## Round Boxes, Adjustable **32**

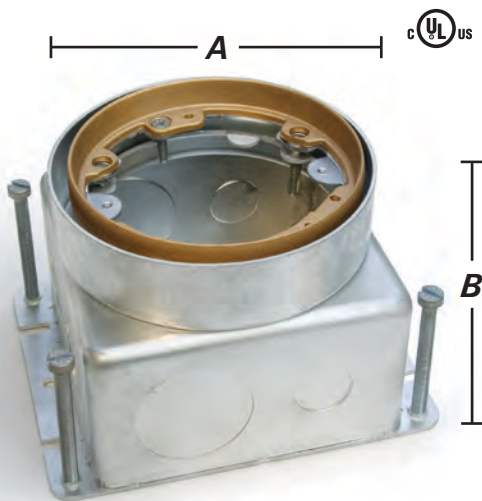
CATALOG #	DESCRIPTION	DIMENSIONS		ADJUST BEFORE	ADJUST AFTER	INTERIOR CAPACITY	CONDUIT OPENINGS	MAX TAP
		A	B					
532-58 ①	Deep, cast box, fully adjustable	4 1/4"	4 3/16"	X	3/8"	32 Cu. In.	Sides (4) 3/4"	1 1/4"
532-SB-58 ①	Shallow, cast box, fully adjustable	4 1/4"	3 5/16"	X	3/8"	24 Cu. In.	Sides (4) 3/4"	1 1/4"
532-SMB	Deep Stamped Steel, fully adjustable	4 11/16"	3 3/4"	2 1/4"	1/2"	57 Cu. In.	1/2", 3/4", 1", 1 1/4"	none
532-SMB-SB ③	Shallow, Stamped Steel, fully adjustable	4 11/16"	2 13/16"	2 1/4"	1/2"	43.8 Cu. In.	Sides (6) 1/2", (4) 3/4" Bottom (3) 1/2", (2) 3/4"	none
CATALOG #	DESCRIPTION	DIMENSIONS		ADJUST BEFORE	ADJUST AFTER	INTERIOR CAPACITY	CONDUIT OPENINGS	MAX TAP
		A	B					
332-58 ①	Shallow, cast box, semi adjustable	4 1/4"	2 1/8"	1"	X	12 Cu. In.	Sides (4) 3/4"	1"
MW-332-58 ①	Core drill cast box, semi adjustable	4 1/4"	2 1/8"	1/2"	X	12 Cu. In.	Sides (4) 3/4" ②	1"

① Add -A for Aluminum finish; ② additional 3/4" conduit opening in bottom of box;

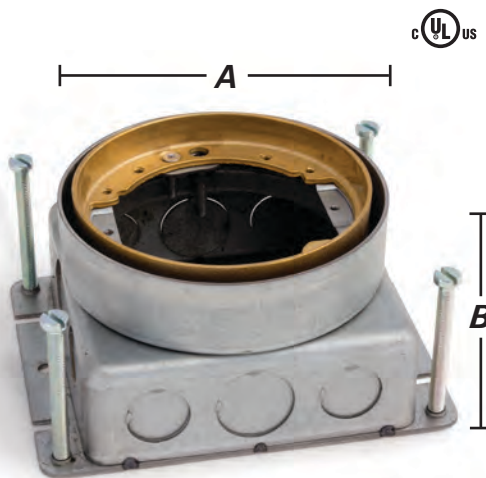
③ additional 3/4" (2) & 1/2" (2) conduit openings in bottom

>>>> All boxes UL listing #514A, #489H

532-SMB



532-SMB-SB



532-58



532-SB-58



332-58



MW-332-58



# 32 Round Box Covers



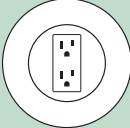

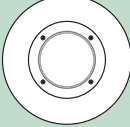
CATALOG #	DESCRIPTION
DFB-LR	Brass, dual hinged cover (1/4" thick) for duplex
DFB-LR-A	Aluminum, dual hinged cover (1/4" thick) for duplex
DFB-1	Brass, hinged cover (1/4" thick) for duplex
DFB-1-A	Aluminum, hinged cover (1/4" thick) for duplex
SCF-1 ①	5 1/4" Brass flange
SCF-1-A ①	5 1/4" Aluminum flange
TCP-1 ②	5 3/4" Brass flanged cover, with 2" - 1/2" combo plug for Comm./Data. Or single recept.
TCP-1-NS ②	5 3/4" Nickel Silver flanged cover, with 2" - 1/2" combo plug for Comm./Data. Or single receptacle
TCP-2 ②	5 3/4" Brass flanged cover, with (2) 1 1/2", screw plugs for duplex power or Comm./Data
TCP-2-A ②	5 3/4" Aluminum flanged cover, with (2) 1 1/2", screw plugs for duplex power or Comm./Data
TCP-2-NS ②	5 3/4" Nickel Silver flanged cover, with (2) 1 1/2", screw plugs for duplex power or Comm./Data
TCP-2-LR ②	5 3/4" Seamless Brass flanged cover, with dual flip lid and duplex mount. PLT.
TCP-2-LR-A ②	5 3/4" Seamless Aluminum flanged cover, with dual flip lid and duplex mount. PLT.
523-DP	Brass, cover (1/8" thick) with (2) 1- 1/2" screw plugs for duplex
523-DP-A	Aluminum, cover (1/8" thick) with (2) 1- 1/2" screw plugs for duplex
523-DP-NS	Nickel Silver, cover (1/8" thick) with (2) 1- 1/2" screw plugs for duplex
524	Brass, cover (1/8" thick) with 2" - 1/2" combo plug for Comm./Data

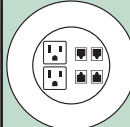



>>>> All covers 4" except: ① 5 1/4"; ② 5 3/4"  
 >>>> UL recognized components  
 >>>> For Replacement Plugs, see page 34

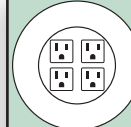
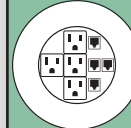
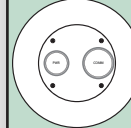
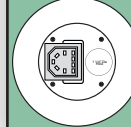


# POKE THROUGHS

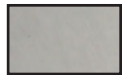
## STEP 1 » Choose Configuration

	<b>MOI-AV-COMM4 »</b> AV opening & (4) communication openings
	<b>MOI-COMM10 »</b> Ten communication openings
	<b>MOI-DP1 »</b> Decora receptacle
	<b>MOI-DP1-COMM4 »</b> Decora receptacle & (4) communication openings
	<b>MOI-PASS-THROUGH »</b> 2.5" trade size circular opening

	<b>MOI-PWR2-COMM4 »</b> (2) single receptacle & (4) communication openings
	<b>MOI-PWR2-COMM4-DB15 »</b> (2) single receptacle & (4) communication openings & (1) DB-15 opening
	<b>MOI-PWR2-COMM5 »</b> (2) single receptacle & (5) communication openings
	<b>MOI-PWR2-COMM6 »</b> (2) single receptacle & (6) communication openings

	<b>MOI-PWR4 »</b> (4) single receptacle
	<b>MOI-PWR4-COMM4 »</b> (4) single receptacle & (4) communication openings
	<b>MOI-SYS-COMM »</b> Systems furniture communication-power & comm cabling
	<b>MOI-SYS-NOC-COMM »</b> Nocom systems furniture connection outlet

## STEP 2 » Choose Finish



**Stainless Steel**  
Add: **-SS**

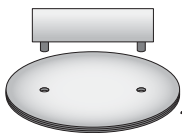


**Brass**  
Add: **-BR**

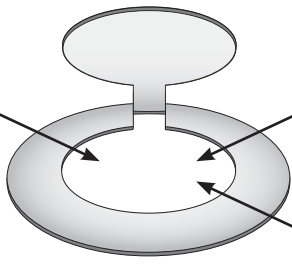


**Black\***  
Add: **-BL**  
\*Black cover option available  
**ONLY** in Drop Cover lid

## STEP 3 » Choose Cover Type



**Threaded Security**  
Add: **-TS**



**Hinged**  
Add: **-H**



**Drop Cover**  
Add: **-D**



**Threaded Coin**  
Add: **-TC**

## STEP 4 » Specify Slab Thickness

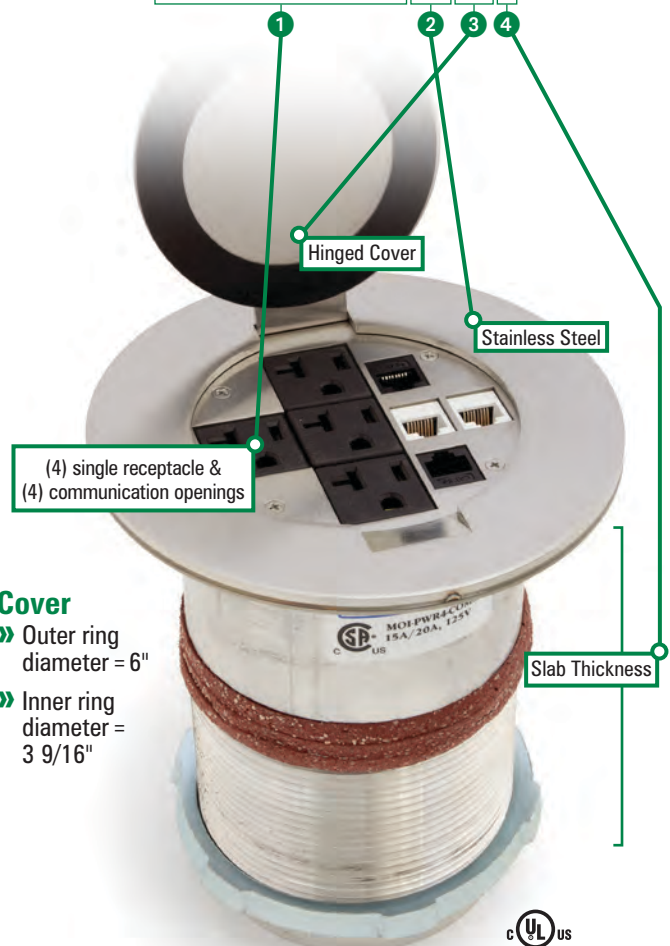
» Must specify when ordering to achieve proper collar size of threaded pipe

## UL LISTINGS

- » UL listed 2-hour fire rating for US & Canada.
- » UL Fire: R21090
- » UL Electrical: E340490 (scrub test part of this #)
- » CSA #: 212271

## EXAMPLE

**MOI-PWR4-COMM4-SS-HC-8**



**Cover**  
» Outer ring diameter = 6"  
» Inner ring diameter = 3 9/16"





# NOZZLES *Low Profile*

CATALOG #	DESCRIPTION	DIMENSIONS			STANDARD OPENINGS
		H	L	D	
FDN-300-A	Aluminum floor nozzle	2 7/8"	4"	2 7/8"	3/4" (Also available in 1/2" or 1", please specify)
FDN-300-A W/P	Aluminum floor nozzle with partition	3"	4 3/4"	4 1/4"	(2) 3/4" (Threaded)
FDN-709-A	Aluminum floor nozzle for up to (4) duplex receptacles (not included)	4 3/4"	4 1/4"	4 1/4"	1"



# NOZZLE *Accessories*

CATALOG #	DESCRIPTION
710-A ①	Nozzle plate will accommodate (2) duplex receptacles.
711-A ①	Nozzle plate will accommodate 30-50 amp receptacle.
712-A ①	Blank nozzle plate.
713-GFI-A ①	Nozzle plate will accommodate (2) gfi receptacles.
803-A ①	Blank nozzle plate.
804-A ①	Nozzle plate for duplex receptacle.
806-A ①	Nozzle plate for single receptacle or cable.
807-GFI-A ①	Nozzle plate for gfi receptacle.

① Each Floor Nozzle requires two plates.



# Replacement Plugs

CATALOG #	DESCRIPTION
6410-1/2 ①	Brass 2" - 1/2" combination plug
6410-3/4 ①	Brass 2" - 3/4" combination plug
6410-1 ①	Brass 2" - 1" combination plug
6207 ①	Brass 2" close up plug
6208 ①	Brass 1/2" close up plug
6210 ①	Brass 3/4" close up plug
6211 ①	Brass 1" close up plug
6212 ①②	Brass 1 1/4" close up plug
6213 ①	Brass 1 1/2" close up plug (duplex covers)
6213-BP	Brass Plated 1 1/2" close up plug (for RRP-1-BP & SWB-1-BP ONLY)
6213-NP	Nickel Plated 1 1/2" close up plug (for RRP-1-NP & SWB-1-NP ONLY)
6214 ①	1 1/4" plug for RCFB series

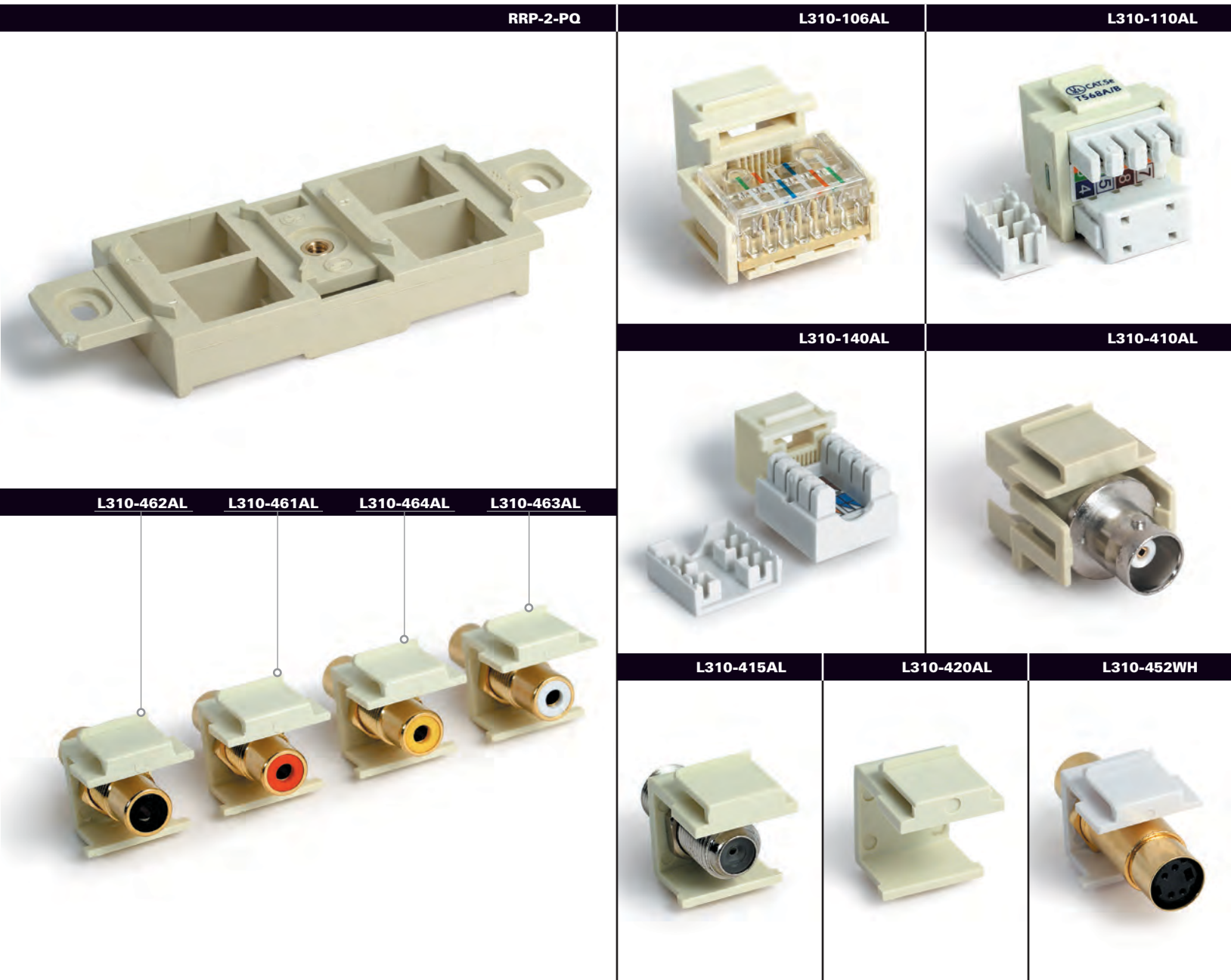
① Add -A for Aluminum finish; ② Add -NS for Nickel Silver finish

<p><b>6410-1/2</b></p> <p><b>FITS COVERS:</b> 6304-S 503 524 TCP-1</p> 	<p><b>6410-3/4</b></p> <p><b>FITS COVERS:</b> 6304-S-3/4" 524-3/4</p> 	<p><b>6410-1</b></p> <p><b>FITS COVERS:</b> 6304-S-1" 524-1"</p> 	<p><b>6207</b></p> <p><b>FITS COVERS:</b> 504</p> 
<p><b>6208</b></p> <p><b>FITS COVERS:</b> DFB-1-1/2" 6304-S 503 524 TCP-1</p> 	<p><b>6210</b></p> <p><b>FITS COVERS:</b> 6304-S-3/4" 524-3/4</p> 	<p><b>6211</b></p> <p><b>FITS COVERS:</b> 6304-S-1" 524-1"</p> 	<p><b>6212</b></p> <p><b>FITS COVERS:</b> RRP/SWB-2 or -4</p> 
<p><b>6213</b></p> <p><b>FITS COVERS:</b> 523-DP (812) 6304-DP (1101) TCP-2</p> 	<p><b>6213-BP</b></p> <p><b>FITS COVERS:</b> RRP-1-BP SWB-1-BP</p> 	<p><b>6213-NP</b></p> <p><b>FITS COVERS:</b> RRP-1-NP SWB-1-NP</p> 	<p><b>6214</b></p> <p><b>FITS COVERS:</b> RCFB-1 RCFB-2</p> 

# Low Volt

CATALOG #	DESCRIPTION
RRP-2-PQ	Quad port
L310-106AL	Almond keystone jack; Category 3
L310-110AL	RJ45 almond CAT 5E keystone jack; internet and phone
L310-140AL	RJ45 almond CAT 6 keystone jack; internet and phone
L310-410AL	BNC almond keystone insert; radio and TV
L310-415AL	Almond keystone insert; cable, satellite ①
L310-420AL	Blank almond keystone cover ①
L310-452WH	S-video jack-jack white
L310-461AL	RCA almond red band-gold ①
L310-462AL	RCA almond black band-gold ①
L310-463AL	RCA almond white band-gold ①
L310-464AL	RCA almond yellow band-gold ①

① Any combination can fit 4 devices to one RRP-2-PQ



**Who We Are:** We are the worldwide leader in providing safe and innovative floor boxes for residential and commercial use, providing floor boxes for homes, churches, airports and sports stadiums. We provide a solution for electrical needs where wall boxes are insufficient.

**Guarantee:** Centrally located just outside of Chicago, Illinois, Lew Electric Fittings Company guarantees the fastest shipping and delivery in the market. We also provide full time experts at the factory to answer any questions regarding any floor box issue.

**History:** Lew Electric Fittings Company is a family owned and operated company founded in 1901. Our founder, Jake Lewin, started with only one floor box. "Lew" used incomparable quality in materials and craftsmanship, and insisted on providing personal customer service, turning that one floor box into the largest variety of boxes in the industry today.

**Mission Statement:** Providing the power where power is needed!

**LEW ELECTRIC FITTINGS CO.**

371 Randy Road; Carol Stream, IL 60188

**PHONE:** 630-665-2075

**FAX:** 630-665-2077

**WWW.LEWELECTRIC.COM**

**E-MAIL:** [sales@lewelectric.com](mailto:sales@lewelectric.com)