

Mini Mod III Nomenclature.....	2-2
Mini Mod III—Ring Type and Ringless	2-3
Mini Mod III—Tenant Main Circuit Breakers	2-4
Mini Mod III—Factory Installed Accessories.....	2-5
Mini Mod III—Field Installed Accessories.....	2-6
Meter Mod III Nomenclature	2-7
Meter Mod III—How to Order; Short Circuit Ratings	2-8
Meter Mod III—Modular Metering Series Ratings.....	2-9
Meter Mod III—Main Breaker Modules, Single-Phase and Three-Phase.....	2-11
Factory Installed Accessories	2-13
Meter Mod III—Main Fusible Modules, Single-Phase and Three-Phase.....	2-14
Factory Installed Accessories	2-15
Meter Mod III—Main Fusible with Pull Box and Main Lug Modules Single-Phase and Three-Phase.....	2-16
Factory Installed Accessories	2-17
Meter Mod III—Main Pull Box Modules and Accessories Single-Phase and Three-Phase.....	2-18
Meter Mod III—Meter Stack Modules, Single-Phase Plus Accessories	2-19
Meter Mod III—Meter Stack Modules, Three-Phase Plus Accessories.....	2-23
Meter Mod III—Meter Stack Modules, Phase Balancing.....	2-24
Meter Mod III—Applications Where Center-Feeding Main Module is Required.....	2-25
Mini Mod III—Enclosure Knockout Dimensions.....	2-26
Meter Mod III—Enclosure Knockout Dimensions.....	2-27



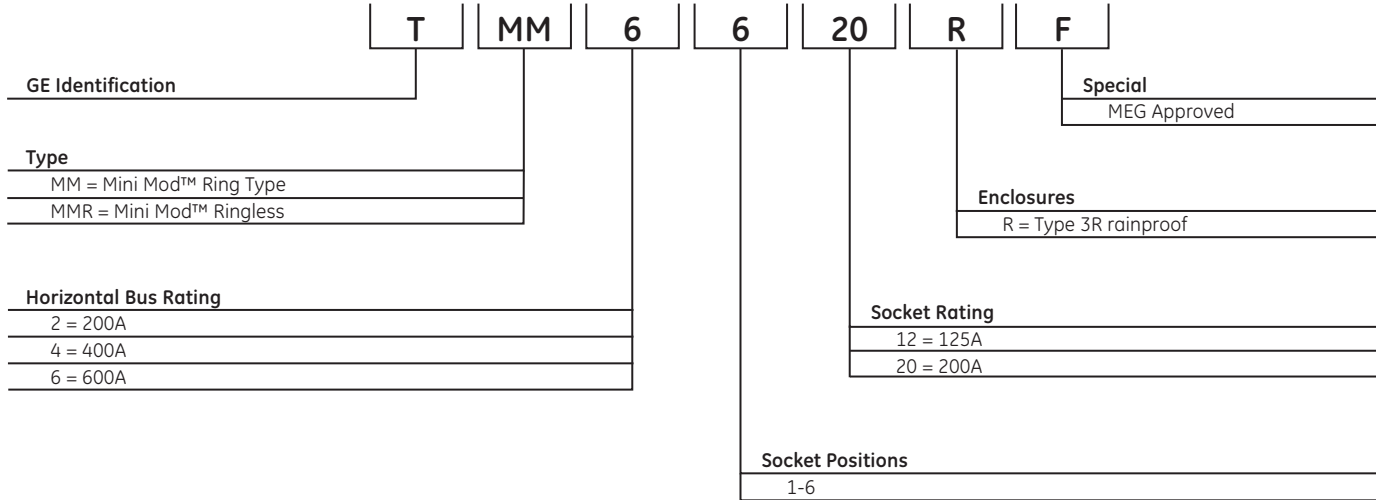
Modular Metering Mini Mod III Nomenclature

Product Number System

Section 2

Product Number Guide for Mini Mod III

(Product number for illustrative purposes only)



Modular Metering Mini Mod III

Basic Devices
Ring-Type and Ringless



Product Features

- UL Listed (Panelboards No. 67)
- Indoor/Outdoor Construction
- Ring-Type and Ringless Meter Sockets
- Bondable Neutral, Strap Included
- 11-inch Mounting Z Rail Included
- Swing Away Mounting Feet Factory Installed
- Underground, incoming feed only

Ring Type Socket¹

TMM4412R

Socket Amps	No. of Sockets	Main Ampere Rating	Main Wire Size AWG/kcmil Cu/A	Service Ground	Equipment Ground	Standard Product Number	MEG Product Number ³
125 A	2	200	(1) 6 -300	6-2/0	14-4	TMM2212R ²	TMM2212RF ²
125 A	3	400	(1) 6 -600 or (2) 2/0 -250	4-300	14-4	TMM4312R	TMM4312RF
125 A	4	400	(1) 6 -600 or (2) 2/0 -250	4-300	14-4	TMM4412R	TMM4412RF
125 A	5	600	(2) 250 - 500	4-300	14-4	TMM6512R	TMM6512RF
125 A	6	600	(2) 250 - 500	4-300	14-4	TMM6612R	TMM6612RF
200 A	2	400	(2) 250 - 500	4-300	14-4	TMM4220R	Use TMM6320RF
200 A	3	600	(2) 250 - 500	4-300	14-4	TMM6320R	TMM6320RF
200 A	4	600	(2) 250 - 500	4-300	14-4	TMM6420R	TMM6420RF
200 A	5	600	(2) 250 - 500	4-300	14-4	TMM6520R	Use Meter Mod III or Ringless
200 A	6	600	(2) 250 - 500	4-300	14-4	TMM6620R	Use Meter Mod III or Ringless

Ringless Type Socket⁴

Socket Amps	No. of Sockets	Main Ampere Rating	Main Wire Size AWG/kcmil Cu/Al	Service Ground	Equipment Ground	Standard Product Number	Horned Bypass Product Number ⁵	MEG Product Number ³
125 A	2	200	(1) 6 -300	6-2/0	14-4	TMMR2212R ²	TMMR2212RHB ²	TMMR2212RF ²
125 A	3	400	(1) 6 -600 or (2) 2/0 -250	4-300	14-4	TMMR4312R	TMMR4312RHB	TMMR4312RF
125 A	4	400	(1) 6 -600 or (2) 2/0 -250	4-300	14-4	TMMR4412R	TMMR4412RHB	TMMR4412RF
125 A	5	600	(2) 250 - 500	4-300	14-4	TMMR6512R	TMMR6512RHB	TMMR6512RF
125 A	6	600	(2) 250 - 500	4-300	14-4	TMMR6612R	TMMR6612RHB	TMMR6612RF
200 A	2	400	(2) 250 - 500	4-300	14-4	TMMR4220R	TMMR4220RHB	TMMR4220RF
200 A	3	600	(2) 250 - 500	4-300	14-4	TMMR6320R	TMMR6320RHB	TMMR6320RF
200 A	4	600	(2) 250 - 500	4-300	14-4	TMMR6420R	TMMR6420RHB	TMMR6420RF
200 A	5	600	(2) 250 - 500	4-300	14-4	TMMR6520R	TMMR6520RHB	TMMR6520RF
200 A	6	600	(2) 250 - 500	4-300	14-4	TMMR6620R	TMMR6620RHB	TMMR6620RF

Short Circuit Ratings – UL Listed

All Mini Mod IIIs are UL listed for the short circuit rating at 240 Vac maximum in rms symmetrical amperes of the tenant breaker installed, selected from table below.

The short circuit rating is limited to the lowest interrupting rating of any tenant breaker installed.

Replacement breakers shall be of the same manufacturer and type and shall have an interrupting rating equal to or greater than the interrupting rating of any tenant breaker presently installed in this device.

Tenant Main Breaker Frame	UL Listed AIC Rating
TMQD	100,000
TMQL	42,000
THQD	22,000
THQL	22,000
TQD	10,000
THQL	10,000

GE breakers rated 10,000 AIC or greater when installed on the load side of the Mini Mod III are protected for the interrupting rating per the UL Listing marked on the tenant breaker.

¹One snap-type, aluminum sealing ring(TSR5) per socket included

²May be fed from overhead. Use hub TC300.

³Units with "F" suffix have an additional cotter pin that has been added to the meter socket assembly to keep meter socket from detaching from base. These are required in all MEG areas as of January 2016.

⁴Includes factory installed fifth jaw.

⁵Units with "HB" suffix have a factory installed horn bypass included.



Modular Metering Mini Mod III

Tenant Main Circuit Breakers

Section 2

Tenant Main Circuit Breakers For 125 Amp Sockets

Ampere Rating	10,000 AIC	22,000 AIC	42,000 AIC
	Product Number	Product Number	Product Number
60	THQL2160	THHQL2160	TMQL2160
70	THQL2170	THHQL2170	TMQL2170
80	THQL2180	THHQL2180	TMQL2180
90	THQL2190	THHQL2190	TMQL2190
100	THQL21100	THHQL21100	TMQL21100
110	THQL21110	THHQL21110	-
125	THQL21125	THHQL21125	TMQL21125
125 ¹	TMQL21125SF	-	-

¹Sub-feed lug kit, no overcurrent protection.



THQL, THHQL



TMQL



TQD, THQD



TMQD

Tenant Main Circuit Breakers For 200 Amp Sockets

Ampere Rating	10,000 AIC	22,000 AIC	100,000 AIC
	Product Number	Product Number	Product Number
60	-	-	TMQD22060
70	-	-	TMQD22070
80	-	-	TMQD22080
90	-	-	TMQD22090
100	TQD22100	THQD22100	TMQD22100
125	TQD22125	THQD22125	TMQD22125
150	TQD22150	THQD22150	TMQD22150
175	TQD22175	THQD22175	TMQD22175
200	TQD22200	THQD22200	TMQD22200

Tenant Main Lug Wire Sizes (AWG/kcmil)

Type	Ampere Rating	Copper	Aluminum
THQL, THHQL	60	8-3	8-2
	70-100	6-1/0	4-1/0
	110-125	2-2/0	2-2/0
TMQL	60-125	10-1/0	10-1/0
	60-90	6-1/0	6-1/0
TMQD	100-150	6-4/0	6-4/0
	175-225	1/0-300	1/0-300
TQD, THQD	100-200	1-300	1-300



Modular Metering Mini Mod III

Accessories
Factory Installed

Section 2

Mini Mod III Factory Installed Lug Kit

Main Mini Mod	Amp. Rating	Phase		Neutral		GE Lug Kit Product Number	Lugs Per Kit
		Wire Size	Wire Size	Wire Size	Wire Size		
TMM2212R, TMM2212RF TMMR2212R, TMMR2212RF, TMMR2212RHB TMM4312R, TMM4312RF	125	#6-300		#6-300			
TMMR4312R, TMMR4312RF, TMMR4312RHB TMM4412R, TMM4412RF TMMR4412R, TMMR4412RF, TMMR4412RHB	125	(1) 2/0-600 or (2) #6-250		(1) 2/0-600 or (2) #6-250		TMMLK1	1 lug/kit, 1 lug per phase, 2 hole lug
TMM6512R, TMM6512RF TMMR6512R, TMMR6512RF, TMMR6512RHB TMM6612R, TMM6612RF TMMR6612R, TMMR6612RF, TMMR6612RHB	125						
TMM4220R TMMR4220R, TMMR4220RF, TMMR4220RHB TMM6320R, TMM6320RF TMMR6320R, TMMR6320RF, TMMR6320RHB TMM6420R, TMM6420RF TMMR6420R, TMMR6420RF, TMMR6420RHB TMM6520R TMMR6520R, TMMR6520RF, TMMR6520RHB TMM6620R TMMR6620R, TMM6620RF, TMMR6620RHB	200	(2) 250-500		(2) 250-500		TMPAL30	1 lug per kit, 1 lug per phase

Mini Mod III Factory Optional Lug Kit and Optional Compression Lug Kit

Main Mini Mod	Amp. Rating	Wire Size	Phase		GE Lug Kit Product Number	Wire Size	GE Lug Kit Product Number	Lugs Per Kit
			GE Lug Kit Product Number	GE Lug Kit Product Number				
TMM4312R, TMM4312RF	125	(3) #4-300 (2) 250-500			TMPAL40 TMPAL30			
TMMR4312R, TMMR4312RF, TMMR4312RHB	125	(3) #4-300 (2) 250-500			TMPAL40 TMPAL30			
TMM4412R, TMM4412RF	125	(3) #4-300 (2) 250-500			TMPAL40 TMPAL30			
TMMR4412R, TMMR4412RF, TMMR4412RHB	125	(3) #4-300 (2) 250-500			TMPAL40 TMPAL30			
TMM6512R, TMM6512RF	125	(3) #4-300 (1) 2/0-600 or (2) #6-250			TMPAL40 TMPAL30			
TMMR6512R, TMMR6512RF, TMMR6512RHB	125	(3) #4-300 (1) 2/0-600 or (2) #6-250			TMPAL40 TMPAL30			
TMM6612R, TMM6612RF	125	(3) #4-300 (1) 2/0-600 or (2) #6-250			TMPAL40 TMPAL30			
TMMR6612R, TMMR6612RF, TMMR6612RHB	125	(3) #4-300 (1) 2/0-600 or (2) #6-250			TMPAL40 TMPAL30			
TMM4220R	200	(3) #4-300 (1) 2/0-600 or (2) #6-250			TMPAL40 TMPAL30	Compression	TMM6CLL	2 studs per phase, double stack for up to 2 conductors per phase, kit includes 3 lug landing pads (1 kit per device)
TMMR4220R, TMMR4220RF, TMMR4220RHB	200	(3) #4-300 (1) 2/0-600 or (2) #6-250			TMPAL40 TMPAL30			
TMM6320R, TMM6320RF	200	(3) #4-300 (1) 2/0-600 or (2) #6-250			TMPAL40 TMPAL30			
TMMR6320R, TMMR6320RF, TMMR6320RHB	200	(3) #4-300 (1) 2/0-600 or (2) #6-250			TMPAL40 TMPAL30			
TMM6420R, TMM6420RF	200	(3) #4-300 (1) 2/0-600 or (2) #6-250			TMPAL40 TMPAL30			
TMMR6420R, TMMR6420RF, TMMR6420RHB	200	(3) #4-300 (1) 2/0-600 or (2) #6-250			TMPAL40 TMPAL30			
TMM6520R	200	(3) #4-300 (1) 2/0-600 or (2) #6-250			TMPAL40 TMPAL30			
TMMR6520R, TMMR6520RF, TMMR6520RHB	200	(3) #4-300 (1) 2/0-600 or (2) #6-250			TMPAL40 TMPAL30			
TMM6620R	200	(3) #4-300 (1) 2/0-600 or (2) #6-250			TMPAL40 TMPAL30			
TMMR6620R, TMM6620RF, TMMR6620RHB	200	(3) #4-300 (1) 2/0-600 or (2) #6-250			TMPAL40 TMPAL30			



Modular Metering

Mini Mod III

Accessories
Field Installed

Section 2

Accessories - Field Installed

Description	Product Number
Semi-Flush Kits	
-125A Sockets -2 gang	TMM12SF2
-3 and 4 gang	TMM12SF4
-5 and 6 gang	TMM12SF6
-2 gang	TMM20SF2
-200A Sockets -3 and 4 gang	TMM20SF4
-5 and 6 gang	TMM20SF6
Compression Lug Landing Kit -600 amp Includes 3 pads each with 2 threaded stud connections (and hardware) for compression or mechanical lugs with NEMA 2-hole bolt configuration (lugs not furnished). Not suitable for 2-gang	TMM6CLL
By-pass Kits	
Manual Slider-Type (Ring Type Only) ¹	
-125 amp top socket for 2, 3, 5 and 6 gang	TMBPM12TA
-125 amp for all other sockets	TMBPM12A
-200 amp for all sockets	TMBPM20A ²
Jumper Straps Type ¹ (use with TMCA)	TMBPJ20 ⁴
Cover Including Jumper Strap Type-fits all (Ring Type Only) ³	TMBPC20 ⁴
Horn-Type-fits all (Ringless Only) ¹	TMBPH20A
Fifth Jaw Kits	
-Bused; 3, 6, or 9 o'clock mounting:	TMSJA
Order two for fifth and sixth jaw. Not suitable for 2-gang ring type	
-Isolated; 3 or 9 o'clock mounting	TMSJUA
Sealing Rings	
-Screw-Type, Aluminum	TSR1
-Snap Type, Stainless Steel	TSR3
-Screw and Lock-Type, Aluminum	TSR4
-Snap-Type, Aluminum (Standard)	TSR5
Steel Meter Socket Covers	
Blank (fits bottom position only)	
-125 Amp	TMCB12B
-200 Amp	TMCB20B
Ringless (Field -converts ring-type to ringless)	
-125 amp top socket for 2 and 3 gang	TMCR12T
-125 amp for all other sockets	TMCR12
-200 amp for all sockets	TMCR20
Lexan Meter socket Cover Plate (without tabs)	TMCA
Lexan Meter Socket Cover Plate	TMCP
Equipment Ground Bar, (6) 6-2/0	TMEG
Individual Meter Socket Barrier Kit (includes 6)	TMBR
Mounting Z-Rail, 4-foot	TMZR
Lug Kit for (3) 4/0 cable	TMPAL40

¹100 amps continuous.

²For top socket on TMM4220R, order TMBPM20TA.

³200 amps continuous.

⁴Not UL Listed.



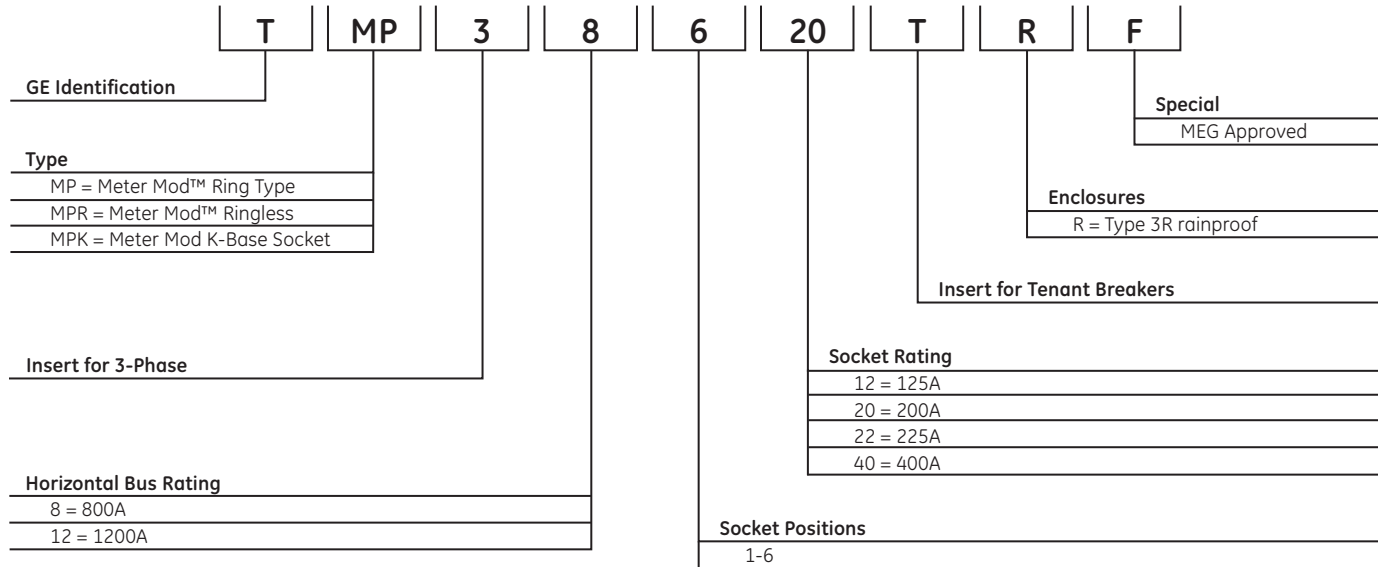
Modular Metering Meter Mod III Nomenclature

Section 2

Product Number System

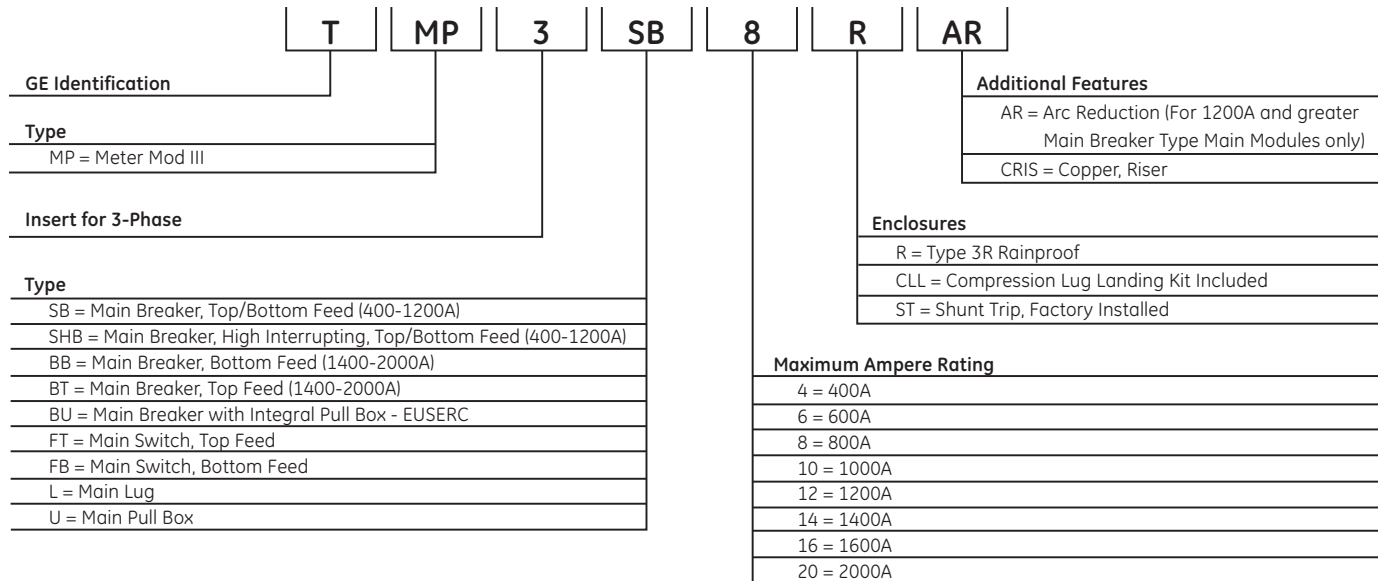
Product Number Guide for Meter Stack Modules

(Product number for illustrative purposes only)



Product Number Guide for Main Modules

(Product number for illustrative purposes only)



Modular Metering Meter Mod III

How to Order

Short Circuit Ratings

Section 2

Product Features

- UL Listed (details below)
- Short Circuit Ratings through 100,000 Amps RMS symmetrical
- Interchangeable Single and Three-phase Main and Meter Modules
- Indoor/Outdoor Construction
- Individual Meter Covers
- 11-inch Mounting Z-Rails Included
- Numerous Accessories



Ordering Guidelines

- A. Determine available fault current
- B. Select the following:
 1. Main Module (pages 2-11 through 2-18)
 - a. Choose type (Breaker, Switch, Switch with Pull Box, Lug, or Pull Box)
 - b. Phase
 - c. Main Ampere Rating
 - d. Short Circuit Rating
 2. Meter Stack Modules (pages 2-19 through 2-23)
 3. Tenant Breakers, Field Installed (pages 2-20 through 2-22)
 4. Accessories (pages 2-19 through 2-23)

UL Standard Listing and File Numbers

Modular Metering Equipment	UL Standard for Safety	UL File No.
Meter Modules	No. 67 Panelboards	E8741
Main Modules		
-Breaker	No. 489 Molded Case Circuit Breakers	E11713
-Switch	No. 98 Enclosed Switches	E9565
-Lug	No. 67 Panelboards	E8741
-Pull Box	No. 869 Service Equipment	E84701
Tenant Main Breakers		
-THQL, TQD	No. 489 Molded Case Circuit Breakers	E11592
-THHQL, THQD	No. 489 Molded Case Circuit Breakers	E11592
-TMQL, TMQD	No. 489 Molded Case Circuit Breakers	E11713
Accessories		
-Meter	No. 414 Meter Sockets	E8741
-Other	No. 67 Panelboards	E8741

Modular Metering System Short Circuit Rating -UL Listed

Available Short Circuit Current rms Symmetrical Amperes @ 240 Volts AC	Main Module ¹			Meter Module	Load Center	Panelboard
	Switch	Breaker	Lug	Tenant Main Breaker Type	Branch Breaker Type	Branch Breaker Type
10,000	All	All	All	THQL, TQD, TEB, TMQL, TMQD	THQP, THQL	THQL, THQB
22,000	All	All	All	THHQL, THQD, TMQL, TMQD	THQP, THQL	THQL, THQB
42,000	All	All	All	TMQL, TMQD	THQP, THQL	THQL, THQB
65,000	All	400-600A: TMPSHB 800-1200A: TMPSB	All	TMQD	THQP, THQL	THQL, THQB
100,000	All	400-600A: TMPSHB	All	TMQD	THQP, THQL	THQL, THQB

¹Main Pull Box Module is UL Listed for use with and at the short circuit rating of main switch and breaker modules.

Short Circuit Interrupting Ratings

These panelboards have a maximum short circuit current rating of 100,000 RMS symmetrical amperes, 240 volts AC maximum. The actual rating depends on the branch breakers and the main breaker, if any, installed in or ahead of the panelboard. The correct combinations for various short circuit ratings follow. Any additional or replacement breakers must be a General Electric type, as indicated, with equal or greater interrupting capacity.

Maximum Short Circuit Rating, rms Symmetrical Amperes, 240 Vac or 120/240 Vac	Main Circuit Breaker When the breaker protecting the panelboard, separate or integral, is GE Type	Branch Circuit Breaker And when the branch circuit breakers installed are GE Type
10,000	None, THQL, TQMV, SKH, SGD, SGH, SGL	THQP, THQL, THQLGF, TQD, THHQL, THQD, TMQD, TMQL
22,000	None, THHQL, THQMV, SKH, (300-1200A), SGD, SGH (125-600A)	THQP, THQL, THQLGF ² , TQD, THHQL, THQD, TMQD, TMQL
42,000	TMQB, TMQL, 300V Class T Fuse (600A max.)	THQP ³ , THQL, THQLGF ² , TQD, THHQL, THQD, TMQD, TMQL
65,000	SGD, SGH (125-600A)	THQL, THHQL, TQD, THQD, TMQB, TMQD, TMQL
100,000	TMQD, SGL (125-600A)	THQP ³ , THQL, THQLGF ² , TQD ⁴ , THHQL, THQD ⁴ , TMQD, TMQL
100,000	300V Class T Fuse (400A max.)	THQP ³ , THQL, THHQL, TQD ⁵ , THQD ⁵ , TMQD, TMQL

²15-30A only.

³Suitable as branch breaker when tenant main provided is: THQL, THHQL, TMQL, TQD, TMQD.

⁴100-200A, 2-pole only.

⁵125-225A, 2- and 3-pole only.

References:

Dimensions and Knockouts	Pages 2-26 through 2-29
Renewal Parts Catalog	DET-388
Construction Details Booklet	DET-395



Modular Metering

Meter Mod III

Modular Metering Series Ratings
125A Sockets

Section 2

Series Ratings – 400A-2000A 1PH (2P) Main Breakers to 2-Pole THQL/THHQL (70-125A) - 125A Sockets¹

Meter Mod III Main Breaker Section	Meter Mod III Breaker Frame	Main Phase	Series Rating of Main (AIC)	Voltage of Main	Voltage of Tenant	Approved For Modular Metering
TMP5B4R	SGH 400		65,000			
TMP5HB4R	SGL 400		100,000			
TMP5B6R	SGH 600		65,000			
TMP5HB6R	SGL 600	1	100,000	208/120 Vac	120/240 Vac	Yes
TMP5B8R	SKH 800		65,000			
TMP5B10R	SKH 1000		65,000			
TMP5B12R	SKH 1200		65,000			
TMPBB14R, TMPBT14R, TMPBB16R, TMPBB16RST, TMPBT16R, TMPBT16RST, TMPBT20R, TMPBB20R	RGH	1	100,000	208/120 Vac	120/240 Vac	No

¹Does not include 60A THQL/THHQL Tenant Breaker (Use 70A Instead)

Series Ratings – 400A-2000A 3PH (3P) Main Breakers to 2-Pole THQL/THHQL (70-125A) - 125A Sockets¹

Meter Mod III Main Breaker Section	Meter Mod III Breaker Frame	Main Phase	Series Rating of Main (AIC)	Voltage of Main	Voltage of Tenant	Approved For Modular Metering
TMP3SB4R	SGH 400		65,000			
TMP3SHB4R	SGL 400		100,000			
TMP3SB6R	SGH 600		65,000			
TMP3SHB6R	SGL 600	3	100,000	208/120 Vac	120/240 Vac	Yes
TMP3SB8R	SKH 800		65,000			
TMP3SB10R	SKH 1000		65,000			
TMP3SB12R	SKH 1200		65,000			
TMPBB14R, TMPBT14R, TMPBB16R, TMPBB16RST, TMPBT16R, TMPBT16RST, TMPBT20R, TMPBB20R	RGH	3	100,000	208/120 Vac	120/240 Vac	No

¹Does not include 60A THQL/THHQL Tenant Breaker (Use 70A Instead)

Series Ratings – 400A-2000A 1PH (2P) Main Fusible Switches to 2-Pole THQL/THHQL (70-125A) - 125A Sockets

Meter Mod III – Main Fusible Switch Section	Meter Mod III Fuse Type	Main Phase	Series Rating of Main (AIC)	Voltage of Main	Voltage of Tenant	Approved For Modular Metering
TMPFT4R	T Fuse					
TMPFB4R	T Fuse	1	100,000	208/120 Vac	120/240 Vac	Yes ³
TMPFT6R	T Fuse					
TMPFB6R	T Fuse					
TMPFT8R	T Fuse					
TMPFB8R ²	T or L Fuse					
TMPFT12R ²	T or L Fuse	1	100,000	208/120 Vac	120/240 Vac	No
TMPFB12R ²	T or L Fuse					
TMPFB12RT	T Fuse					

²Field convertible to Class L fusing, no kit required

³Switches up to 600A rated for series rating at 42K and below; switches up to 400A rated for series rating from >42K – 100K.

Series Ratings – 400A-2000A 3PH (3P) Main Fusible Switches to 2-Pole THQL/THHQL (70-125A) - 125A Sockets

Meter Mod III – Main Fusible Switch Section	Meter Mod III Fuse Type	Main Phase	Series Rating of Main (AIC)	Voltage of Main	Voltage of Tenant	Approved For Modular Metering
TMP3FT4R	T Fuse					
TMP3FB4R	T Fuse	3	100,000	208/120 Vac	120/240 Vac	Yes ³
TMP3FT6R	T Fuse					
TMP3FB6R	T Fuse					
TMP3FT8R ²	T Fuse					
TMP3FB8R	T or L Fuse					
TMP3FT12R ²	T or L Fuse	3	100,000	208/120 Vac	120/240 Vac	No
TMP3FB12R	T or L Fuse					
TMP3FB12RT	T Fuse					
TMP3FB12RST	T or L Fuse					
TMP3FT16R, TMP3FB16R, TMP3FB16RST, TMP3FT20R, TMP3FB20R, TMP3FB20RST	L Fuse	3	100,000	208/120 Vac	120/240 Vac	No

²Field convertible to Class L fusing, no kit required

³Switches up to 600A rated for series rating at 42K and below; switches up to 400A rated for series rating from >42K – 100K.



Modular Metering

Meter Mod III

Modular Metering Series Ratings
200A Sockets

Section 2

Series Ratings – 400A-2000A 1PH (2P) Main Breakers to 2-Pole TQD (100-200A) - 200A Sockets

Meter Mod III Main Breaker Section	Meter Mod III Breaker Frame	Main Phase	Series Rating of Main (AIC)	Voltage of Main	Voltage of Tenant	Approved For Modular Metering
TMP5B4R	SGH 400		65,000			Yes
TMP5HB4R	SGL 400		100,000			No
TMP5B6R	SGH 600		65,000			Yes
TMP5HB6R	SGL 600	1	100,000	208/120 Vac	120/240 Vac	No
TMP5B8R	SKH 800		65,000			No
TMP5B10R	SKH 1000		65,000			No
TMP5B12R	SKH 1200		65,000			No
TMPBB14R, TMPBT14R, TMPBB16R, TMPBB16RST, TMPBT16R, TMPBT16RST, TMPBT20R, TMPBB20R	RGH	1	100,000	208/120 Vac	120/240 Vac	No

Series Ratings – 400A-2000A 3PH (3P) Main Breakers to 2-Pole TQD (100-200A) - 200A Sockets

Meter Mod III Main Breaker Section	Meter Mod III Breaker Frame	Main Phase	Series Rating of Main (AIC)	Voltage of Main	Voltage of Tenant	Approved For Modular Metering
TMP3B4R	SGH 400		65,000			Yes
TMP3HB4R	SGL 400		100,000			No
TMP3B6R	SGH 600		65,000			Yes
TMP3HB6R	SGL 600	3	100,000	208/120 Vac	120/240 Vac	No
TMP3B8R	SKH 800		65,000			No
TMP3B10R	SKH 1000		65,000			No
TMP3B12R	SKH 1200		65,000			No
TMPBB14R, TMPBT14R, TMPBB16R, TMPBB16RST, TMPBT16R, TMPBT16RST, TMPBT20R, TMPBB20R	RGH	3	100,000	208/120 Vac	120/240 Vac	No

Series Ratings – 400A-2000A 1PH (2P) Main Fusible Switches to 2-Pole TQD (100-200A) - 200A Sockets

Meter Mod III - Main Fusible Switch Section	Meter Mod III Fuse Type	Main Phase	Series Rating of Main (AIC)	Voltage of Main	Voltage of Tenant	Approved For Modular Metering
TMPFT4R	T Fuse					
TMPFB4R	T Fuse	1	100,000	208/120 Vac	120/240 Vac	Yes ¹
TMPFT6R	T Fuse					
TMPFB6R	T Fuse					
TMPFT8R	T Fuse					
TMPFB8R	T or L Fuse					
TMPFT12R	L Fuse	1	100,000	208/120 Vac	120/240 Vac	No
TMPFB12R	L Fuse					
TMPFB12RT	T Fuse					

¹Switches up to 600A rated for series rating at 42K and below; switches up to 400A rated for series rating from >42K – 100K.

Series Ratings – 400A-2000A 3PH (3P) Main Fusible Switches to 2-Pole TQD (100-200A) - 200A Sockets

Meter Mod III - Main Fusible Switch Section	Meter Mod III Fuse Type	Main Phase	Series Rating of Main (AIC)	Voltage of Main	Voltage of Tenant	Approved For Modular Metering
TMP3FT4R	T Fuse					
TMP3FB4R	T Fuse	3	100,000	208/120 Vac	120/240 Vac	Yes ¹
TMP3FT6R	T Fuse					
TMP3FB6R	T Fuse					
TMP3FT8R	T Fuse					
TMP3FB8R	T or L Fuse					
TMP3FT12R	L Fuse	3	100,000	208/120 Vac	120/240 Vac	No
TMP3FB12R	L Fuse					
TMP3FB12RT	T Fuse					
TMP3FB12RST	T or L Fuse					
TMP3FT16R, TMP3FB16R, TMP3FB16RST, TMP3FT20R, TMP3FB20R, TMP3FB20RST	L Fuse	3	100,000	208/120 Vac	120/240 Vac	No

¹Switches up to 600A rated for series rating at 42K and below; switches up to 400A rated for series rating from >42K – 100K.



Modular Metering Meter Mod III

Main Breaker Modules Single-Phase and Three-Phase

- Single-Phase Mains have a neutral, A-Phase, B-Phase, and Ground, and may be connected to Three-Phase horizontal bus stacks. However, output is only single-phase.
- All Mains are required to be center feed only when the main circuit breaker rating is larger than the horizontal bus amperage rating.



TMPSB4R

Main Breaker Single-Phase, Three-Wire 120/240 Vac

Breaker included, top or bottom feed. 80% Rated MCB.

Main Ampere Rating	IC Rating (Max)	Main Wire Size		Main Wire Size		Product Number
		AWG/kcmil	Cu/Al - Phase	AWG/kcmil	Cu/Al - Neutral	
400	65 kAIC	Al : (2) 2/0 - 500 or (1) 6 -600	Cu 2/0 - 400 or (1) 6 -600	(2) 2 -600		TMPSB4R
400	100 kAIC	Al : (2) 2/0 - 500 or (1) 6 -600	Cu 2/0 - 400 or (1) 6 -600	(2) 2 -600		TMPSHB4R
600	65 kAIC	Al : (2) 2/0 - 500 or (1) 6 -600	Cu 2/0 - 400 or (1) 6 -600	(2) 2 -600		TMPSB6R
600	100 kAIC	Al : (2) 2/0 - 500 or (1) 6 -600	Cu 2/0 - 400 or (1) 6 -600	(2) 2 -600		TMPSHB6R
800	65 kAIC	Al/Cu (3) 3/0 -500 ¹		(4) 250-500 ²		TMPSB8R
1000	65 kAIC	Al(4) 250-500 CU(4) 250/350 ¹		(4) 250-500 ²		TMPSB10R
1200	65 kAIC	Al(4) 250-500 CU(4) 250/350 ¹		(4) 250-500 ²		TMPSB12R ⁷
1400	100 kAIC	(4) 500-1000 kcmil		Al/Cu (4) 500-1000		TMPBB14R ^{4,6}
1400	100 kAIC	(4) 500-1000 kcmil		Al/Cu (4) 500-1000		TMPBT14R ^{5,6}
1600	100 kAIC	Al/Cu (4) 500-1000 kcmil		Al/Cu (4) 500-1000		TMPBB16R ^{4,6}
1600	100 kAIC	Al/Cu (4) 500-1000 kcmil		Al/Cu (4) 500-1000		TMPBB16RST ^{3,4,6}
1600	100 kAIC	Al/Cu (4) 500-1000 kcmil		Al/Cu (4) 500-1000		TMPBT16R ^{5,6}
1600	100 kAIC	Al/Cu (4) 500-1000 kcmil		Al/Cu (4) 500-1000		TMPBT16RST ^{3,5,6}
2000	100 kAIC	(6) #2 - 600 kcmil		(6) #2 - 600 kcmil		TMPBT20R ^{5,6}
2000	100 kAIC	(6) #2 - 600 kcmil		(6) #2 - 600 kcmil		TMPBB20R ^{4,6}

Main Breaker Single-Phase, Three-Wire 120/240 Vac with Arc Reduction Means

The main breaker in this section has an arc reduction means that satisfies the requirement of NEC 2014 Section 240.87

Main Ampere Rating	IC Rating (Max)	Feed	Main Wire Size		Main Wire Size		Product Number
			AWG/kcmil	Cu/Al - Phase	AWG/kcmil	Cu/Al - Neutral	
400 to less than 1200	-	Top or Bottom	-	-	-	-	Use Standard Part #. Code effects only 1200A and greater
1200	-	Top or Bottom	-	-	-	-	Use 1400 or 1600A and advise GE sales rep to make trip unit 1200A
1400	100 kAIC	Bottom	(4) 500-1000		(4) 250-500		TMPBB14RAR
1600	100 kAIC	Bottom	(4) 500-1000		(4) 500-1000		TMPBB16RAR
		Top					TMPBT16RAR
2000	100 kAIC	Bottom	(6) #2-600		(6) #2-600		TMPBB20RAR

NOTE: These main sections use type RG Breakers. These breakers no longer have rating plugs; they have factory installed trip units. If you need a trip setting that is different than the frame (For example, if you need a TMPBB16RAR 1600A frame with a 1200A trip), please inform your GE sales rep at time of order entry. A request will be made to have this manually changed at the factory.

¹Optional lug TCAL124 field installed wire range (3) 300-750 kcmil.

²Optional neutral lug field installed wire range (3) 1/0-750 kcmil.

Lug kit part number TMPL750.

³Includes 110-240 Vac shunt trip.

⁴Bottom feed.

⁵Top feed.

⁶Fixed Rating Plug not Field adjustable.

⁷To meet NEC 2014 Arc Energy Reduction (Section 240.87), please use a 1175A rating plug. Product Number SRPK1200A1175, order separately.



Modular Metering Meter Mod III

Main Breaker Modules
Single-Phase and Three-Phase

Section 2

Main Breaker Three-Phase, Four-Wire / Single-Phase, Three-Wire 120/240 Vac, 208Y/120 Vac

Breaker included, top or bottom feed. 80% Rated MCB

Main Ampere Rating	IC Rating (Max)	Main Wire Size		Main Wire Size		Product Number
		AWG/kcmil	Cu/Al - Phase	AWG/kcmil	Cu/Al - Neutral	
400	65 kAIC	Al : (2) 2/0 - 500 or (1) 6 - 600	Cu 2/0 - 400 or (1) 6 - 600	(2) 2 - 600		TMP3SB4R
400	100 kAIC	Al : (2) 2/0 - 500 or (1) 6 - 600	Cu 2/0 - 400 or (1) 6 - 600	(2) 2 - 600		TMP3SHB4R
600	65 kAIC	Al : (2) 2/0 - 500 or (1) 6 - 600	Cu 2/0 - 400 or (1) 6 - 600	(2) 2 - 600		TMP3SB6R
600	100 kAIC	Al : (2) 2/0 - 500 or (1) 6 - 600	Cu 2/0 - 400 or (1) 6 - 600	(2) 2 - 600		TMP3SHB6R
800	65 kAIC	Al/Cu (3) 3/0 - 500 ¹		(4) 250-500 ²		TMP3SB8R
1000	65 kAIC	Al(4) 250-500 Cu(4) 250/350 ¹		(4) 250-500 ²		TMP3SB10R
1200	65 kAIC	Al(4) 250-500 Cu(4) 250/350 ¹		(4) 250-500 ²		TMP3SB12R ⁹
1400	100 kAIC	(4) 500-1000 kcmil		(4) 500-1000 kcmil		TMP3BB14R ^{4,7}
1400	100 kAIC	(4) 500-1000 kcmil		(4) 500-1000 kcmil		TMP3BT14R ^{5,7}
1600	100 kAIC	Al/Cu (4) 500-1000		Al/Cu (4) 500-1000		TMP3BB16R ^{4,7}
1600	100 kAIC	Compression Lugs		Compression Lugs		TMP3BB16RCLL ^{4,7}
1600	100 kAIC	Al/Cu (4) 500-1000		Al/Cu (4) 500-1000		TMP3BB16RST ^{3,4,7}
1600	100 kAIC	Al/Cu (4) 500-1000		Al/Cu (4) 500-1000		TMP3BT16R ^{5,7}
1600	100 kAIC	Al/Cu (4) 500-1000		Al/Cu (4) 500-1000		TMP3BT16RST ^{3,5,7}
2000	100 kAIC	(6) #2-600 kcmil		(6) #2-600 kcmil		TMP3BT20R ^{5,7}
2000	100 kAIC	(6) #2-600 kcmil		(6) #2-600 kcmil		TMP3BB20R ^{4,7}
2000	100 kAIC	Compression Lugs		Compression Lugs		TMP3BB20RCLL ^{4,7}
2000	100 kAIC	(6) #2-600 kcmil		(6) #2-600 kcmil		TMP3BT20RST ^{3,5,7}
2000	100 kAIC	(6) #2-600 kcmil		(6) #2-600 kcmil		TMP3BB20RST ^{3,4,7}

Main Breaker Three-Phase, Four-Wire 208Y/120 Vac or Three-Phase, Four-Wire 120/240 Vac, Delta Hi-Leg with Arc Reduction Means

The main breaker in this section has an arc reduction means that satisfies the requirement of NEC 2014 Section 240.87

Main Ampere Rating	IC Rating (Max)	Feed	Main Wire Size		Main Wire Size		Product Number
			AWG/kcmil	Cu/Al - Phase	AWG/kcmil	Cu/Al - Neutral	
400 to less than 1200	-	Top or Bottom	-	-	-	-	Use Standard Part #. Code effects only 1200A and greater
1200	-	Top or Bottom	-	-	-	-	Use 1400 or 1600A and advise GE sales rep to make trip unit 1200A
1400	100 kAIC	Bottom	(4) 500-1000		(4) 500-1000		TMP3BB14RAR
		Top	(4) 500-1000		(4) 500-1000		TMP3BT14RAR
1600	100 kAIC	Bottom	(4) 500-1000		(4) 500-1000		TMP3BB16RAR
		Top	(4) 500-1000		(4) 500-1000		TMP3BT16RAR
2000	100 kAIC	Top	(6) #2-600		(6) #2-600		TMP3BT20RAR
		Bottom	(6) #2-600		(6) #2-600		TMP3BB20RAR

NOTE: These main sections use type RG Breakers. These breakers no longer have rating plugs; they have factory installed trip units. If you need a trip setting that is different than the frame (For example, if you need a TMP3BB16RAR 1600A frame with a 1200A trip), please inform your GE sales rep at time of order entry. A request will be made to have this manually changed at the factory.

Main Breaker Modules Alternate Rating Plugs – Field Installed⁸

Main Ampere Rating	Alternate Rating	Product Number
400 ⁶	225	SRPG400A225
400 ⁶	250	SRPG400A250
400 ⁶	300	SRPG400A300
400 ⁶	350	SRPG400A350
600	400	SRPG600A400
600	450	SRPG600A450
600	500	SRPG600A500
800	600	SRPK800A600
800	700	SRPK800A700
1000	800	SRPK1200A800
1200	1000	SRPK1200A1000

Shunt-Trip - Field Installed For Use on all Main Breaker Modules

Shunt Trip	Product Number
120 Vac	SAST1
240 Vac	SAST2

¹Optional lug TCAL124 field installed wire range (3) 300-750 kcmil.

²Optional neutral lug field installed wire range (3) 1/0-750 kcmil.

Lug kit part number TMPL750.

³Includes 110-240 Vac shunt trip.

⁴Bottom feed.

⁵Top feed.

⁶Alternate for 400A frame.

⁷Fixed Rating Plug not Field adjustable.

⁸Not available for 1400, 1600, and 2000A Mains

⁹To meet NEC 2014 Arc Energy Reduction (Section 240.87), please use a 1175A rating plug. Product Number SRPK1200A1175, order separately.



Modular Metering Meter Mod III

Main Breaker Modules
Single-Phase and Three-Phase

Section 2

Factory Installed Lug Kit

Main Breaker	Amp Rating	Phase		Neutral		GE Lug Kit Product No.	Lugs Per Kit	Total Lugs Per Device
		Wire Size	Wire Size	Wire Size	Wire Size			
TMP5B4R	400	AL:(2) 2/0-500 or (1) 6-600 Cu	2/0-400 or (1) 6-600	(2) 2-600		TCLK265	2 lugs per kit	
TMP3SB4R	400	AL:(2) 2/0-500 or (1) 6-600 Cu	2/0-400 or (1) 6-600	(2) 2-600		TCLK365	3 lugs per kit	
TMP5HB4R	400	AL:(2) 2/0-500 or (1) 6-600 Cu	2/0-400 or (1) 6-600	(2) 2-600		TCLK265	2 lugs per kit	
TMP3SHB4R	400	AL:(2) 2/0-500 or (1) 6-600 Cu	2/0-400 or (1) 6-600	(2) 2-600		TCLK365	3 lugs per kit	
TMP5B6R	600	AL:(2) 2/0-500 or (1) 6-600 Cu	2/0-400 or (1) 6-600	(2) 2-600		TCLK265	2 lugs per kit	
TMP3SB6R	600	AL:(2) 2/0-500 or (1) 6-600 Cu	2/0-400 or (1) 6-600	(2) 2-600		TCLK365	3 lugs per kit	
TMP5HB6R	600	AL:(2) 2/0-500 or (1) 6-600 Cu	2/0-400 or (1) 6-600	(2) 2-600		TCLK265	2 lugs per kit	
TMP3SHB6R	600	AL:(2) 2/0-500 or (1) 6-600 Cu	2/0-400 or (1) 6-600	(2) 2-600		TCLK365	3 lugs per kit	
TMP5B8R	800	AL/Cu (3) 3/0-500		(4) 250-500		TCAL124	1 lug per kit	
TMP3SB8R	800	AL/Cu (3) 3/0-500		(4) 250-500		TCAL124	1 lug per kit	
TMP5B10R	1000	Al(4) 250-500 Cu(4) 250/350		(4) 250-500		TCAL125	1 lug per kit	
TMP3SB10R	1000	Al(4) 250-500 Cu(4) 250/350		(4) 250-500		TCAL125	1 lug per kit	
TMP5B12R	1200	Al(4) 250-500 Cu(4) 250/350		(4) 250-500		TCAL125	1 lug per kit	
TMP3SB12R	1200	Al(4) 250-500 Cu(4) 250/350		(4) 250-500		TCAL125	1 lug per kit	
TMPBB14R	1400	Al/Cu (4) 500-1000		Al/Cu (4) 500-1000		TMPL1600RD	1 lug per kit, 4 holes per lug	3 lugs per device
TMPBT14R	1400	Al/Cu (4) 500-1000		Al/Cu (4) 500-1000		TMPL1600RD	1 lug per kit, 4 holes per lug	3 lugs per device
TMP3BB14R	1400	Al/Cu (4) 500-1000		Al/Cu (4) 500-1000		TMPL1600RD	1 lug per kit, 4 holes per lug	4 lugs per device
TMP3BT14R	1400	Al/Cu (4) 500-1000		Al/Cu (4) 500-1000		TMPL1600RD	1 lug per kit, 4 holes per lug	4 lugs per device
TMPBB16R	1600	Al/Cu (4) 500-1000		Al/Cu (4) 500-1000		TMPL1600RD	1 lug per kit, 4 holes per lug	3 lugs per device
TMP3BB16R	1600	Al/Cu (4) 500-1000		Al/Cu (4) 500-1000		TMPL1600RD	1 lug per kit, 4 holes per lug	4 lugs per device
TMPBB16RST	1600	Al/Cu (4) 500-1000		Al/Cu (4) 500-1000		TMPL1600RD	1 lug per kit, 4 holes per lug	3 lugs per device
TMP3BB16RST	1600	Al/Cu (4) 500-1000		Al/Cu (4) 500-1000		TMPL1600RD	1 lug per kit, 4 holes per lug	4 lugs per device
TMPBT16R	1600	Al/Cu (4) 500-1000		Al/Cu (4) 500-1000		TMPL1600RD	1 lug per kit, 4 holes per lug	3 lugs per device
TMP3BT16R	1600	Al/Cu (4) 500-1000		Al/Cu (4) 500-1000		TMPL1600RD	1 lug per kit, 4 holes per lug	4 lugs per device
TMPBT16RST	1600	Al/Cu (4) 500-1000		Al/Cu (4) 500-1000		TMPL1600RD	1 lug per kit, 4 holes per lug	3 lugs per device
TMP3BT16RST	1600	Al/Cu (4) 500-1000		Al/Cu (4) 500-1000		TMPL1600RD	1 lug per kit, 4 holes per lug	4 lugs per device
TMPBB20R	2000	Al/Cu (6) #2-600		Al/Cu (6) #2-600		TMPL2000RD	9 lugs per kit	6 lugs per device, 3 lugs/neutral
TMP3BB20R	2000	Al/Cu (6) #2-600		Al/Cu (6) #2-600		TMPL2000RD	9 lugs per kit	9 lugs per device, 3 lugs/neutral
TMPBT20R	2000	Al/Cu (6) #2-600		Al/Cu (6) #2-600		TMPL2000RD	9 lugs per kit	6 lugs per device, 3 lugs/neutral
TMP3BT20R	2000	Al/Cu (6) #2-600		Al/Cu (6) #2-600		TMPL2000RD	9 lugs per kit	9 lugs per device, 3 lugs/neutral

Optional Lug Kit

Main Breaker	Amp Rating	Phase			Neutral		
		Wire Size	GE Lug Kit Product No.	GE Lug Product No.	Lugs Per Kit	Wire Size	GE Lug Kit Product No.
TMPBB14R	1400	(6) #2-600	TMPL2000RD	N/A	9	(6) #2-600	TMBP2000N
TMPBT14R	1400	(6) #2-600	TMPL2000RD	N/A	9	(6) #2-600	TMBP2000N
TMP3BB14R	1400	(6) #2-600	TMPL2000RD	N/A	9	(6) #2-600	TMBP2000N
TMP3BT14R	1400	(6) #2-600	TMPL2000RD	N/A	9	(6) #2-600	TMBP2000N
TMPBB16R	1600	(6) #2-600	TMPL2000RD	N/A	9	(6) #2-600	TMBP2000N
TMP3BB16R	1600	(6) #2-600	TMPL2000RD	N/A	9	(6) #2-600	TMBP2000N
TMPBB16RST	1600	(6) #2-600	TMPL2000RD	N/A	9	(6) #2-600	TMBP2000N
TMP3BB16RST	1600	(6) #2-600	TMPL2000RD	N/A	9	(6) #2-600	TMBP2000N
TMPBT16R	1600	(6) #2-600	TMPL2000RD	N/A	9	(6) #2-600	TMBP2000N
TMP3BT16R	1600	(6) #2-600	TMPL2000RD	N/A	9	(6) #2-600	TMBP2000N
TMPBT16RST	1600	(6) #2-600	TMPL2000RD	N/A	9	(6) #2-600	TMBP2000N
TMP3BT16RST	1600	(6) #2-600	TMPL2000RD	N/A	9	(6) #2-600	TMBP2000N



Modular Metering

Meter Mod III

Main Fusible Modules Single-Phase and Three-Phase

Section 2

- Single-Phase Mains have a neutral, A-Phase, B-Phase, and Ground, and may be connected to Three-Phase horizontal bus stacks. However, output is only single-phase.
- All Mains are required to be center feed only when the main fusible switch rating is larger than the horizontal bus amperage rating.



TMPFB6R

Main Fusible Switch Single-Phase, Three-Wire 120/240 Vac

T-Fuses not included (available from table on page 2-18).

Wire Entry	Main Ampere Rating	IC Rating (Max)	Main Wire Size AWG/kcmil Cu/Al - Phase	Main Wire Size AWG/kcmil Cu/Al - Neutral	Stud sets per Phase and Neutral	Compression Lug Landing Kit ²	Product Number
Top	400	100 kAIC	(1) 1/0-750 or (2) 1/0 -300	(1) 1/0-750 or (2) 1/0 -300	1	Order Separately	TMPFT4R ¹
Top	600	100 kAIC	(2) 2- 600	(2) 2- 600	1	Order Separately	TMPFT6R ¹
Top	800	100 kAIC	(4) 3/0-750	(4) 3/0-750	1	Order Separately	TMPFT8R ¹
Top	1200	100 kAIC	(4) 2-500	(4) 2-500			TMPFT12R ²
Bottom	400	100 kAIC	(1) 1/0-750 or (2) 1/0 -300	(1) 1/0-750 or (2) 1/0 -300	1	Order Separately	TMPFB4R ¹
Bottom	600	100 kAIC	(2) 2- 600	(2) 2- 600	1	Order Separately	TMPFB6R ¹
Bottom	800	100 kAIC	(4) 3/0-750	(4) 3/0-750	1	Order Separately	TMPFB8R ¹
Bottom	1200	100 kAIC	(4) 2-600	(4) 2-600			TMPFB12RT ³
Bottom	1200	100 kAIC	(4) 2-500	(4) 2-500			TMPFB12R ⁴

Main Fusible Switch Three-Phase, Four-Wire / Single-Phase, Three-Wire 120/240 Vac, 208Y/120 Vac, 240/120 Vac

T-Fuses not included (available from table on page 2-18).

Wire Entry	Main Ampere Rating	IC Rating (Max)	Main Wire Size AWG/kcmil Cu/Al - Phase	Main Wire Size AWG/kcmil Cu/Al - Neutral	Stud sets per Phase and Neutral	Compression Lug Landing Kit ²	Product Number
Top	400	100 kAIC	(1) 1/0-750 or (2) 1/0 -300	(1) 1/0-750 or (2) 1/0 -300	1	Order Separately	TMP3FT4R ¹
Top	600	100 kAIC	(2) 2- 600	(2) 2- 600	1	Order Separately	TMP3FT6R ¹
Top	800	100 kAIC	(4) 3/0-750	(4) 3/0-750	1	Order Separately	TMP3FT8R ¹
Top	1200	100 kAIC	(4) 4-600	(4) 4-600			TMP3FT12R ²
Top	1600	100 kAIC	(6) 4-600	(6) 4-600			TMP3FT16R ²
Top	2000	100 kAIC	(8) 4-600	(8) 4-600			TMP3FT20R ²
Bottom	400	100 kAIC	(1) 1/0-750 or (2) 1/0 -300	(1) 1/0-750 or (2) 1/0 -300	1	Order Separately	TMP3FB4R ¹
Bottom	600	100 kAIC	(2) 2- 600	(2) 2- 600	1	Order Separately	TMP3FB6R ¹
Bottom	800	100 kAIC	(4) 3/0-750	(4) 3/0-750	1	Order Separately	TMP3FB8R ¹
Bottom	1200	100 kAIC	(4) 2-600	(4) 2-600			TMP3FB12RT ⁵
Bottom	1200	100 kAIC	(4) 4-600	(4) 4-600			TMP3FB12R ⁶
Bottom	1600	100 kAIC	(6) 4-600	(6) 4-600			TMP3FB16R ²
Bottom	2000	100 kAIC	(8) 4-600	(8) 4-600			TMP3FB20R ²
Bottom	1200	100 kAIC	(4) 4-600	(4) 4-600			TMP3FB12RST ^{2,7}
Bottom	1600	100 kAIC	(6) 4-600	(6) 4-600			TMP3FB16RST ^{2,7}
Bottom	2000	100 kAIC	(8) 4-600	(8) 4-600			TMP3FB20RST ^{2,7}

¹Class T fuse only.

²Class L fuse only. Bolted pressure switch.

³TMPFB12RT is a standard fusible switch that uses only Class T fuses. This unit is less robust and smaller than the TMPFB12R, but is significantly less expensive.

⁴TMPFB12R is a bolted pressure switch that uses only Class L fuses. This unit is larger and more robust than the TMPFB12RT, but more expensive.

⁵TMP3FB12RT is a standard fusible switch that uses only Class T fuses. This unit is less robust and smaller than the TMP3FB12R, but is significantly less expensive.

⁶TMP3FB12R is a bolted pressure switch that uses only Class L fuses. This unit is larger and more robust than the TMP3FB12RT, but more expensive.

⁷Product numbers ending in "ST" have shunt tripping style bolted pressure switch.



Modular Metering Meter Mod III

Main Fusible Modules
Single-Phase and Three-Phase

Section 2

Factory Installed Lug Kit

Main Switch	Amp Rating	Phase Wire Size	Neutral Wire Size	GE Lug Kit Product No.	Lugs Per Kit
TMPFT4R	400	(1) 1/0-750 or (2) 1/0-300	(1) 1/0-750 or (2) 1/0-300		
TMP3FT4R	400	(1) 1/0-750 or (2) 1/0-300	(1) 1/0-750 or (2) 1/0-300		
TMPFT6R	600	(2) 2-600	(2) 2-600		
TMP3FT6R	600	(2) 2-600	(2) 2-600		
TMPFT8R	800	(4) 3/0-750	(4) 3/0-750	TMPL40	1 lug per kit, 4 holes per lug
TMP3FT8R	800	(4) 3/0-750	(4) 3/0-750	TMPL40	1 lug per kit, 4 holes per lug
TMPFT12R	1200	(4) 2-500	(4) 2-500		
TMP3FT12R	1200	(4) 2-600, 2 lugs per phase	(4) 2-600		
TMPFB4R	400	(1) 1/0-750 or (2) 1/0-300	(1) 1/0-750 or (2) 1/0-300		
TMP3FB4R	400	(1) 1/0-750 or (2) 1/0-300	(1) 1/0-750 or (2) 1/0-300		
TMPFB6R	600	(2) 2-600	(2) 2-600		
TMP3FB6R	600	(2) 2-600	(2) 2-600		
TMP3FB8R	800	(4) 3/0-750	(4) 3/0-750	TMPL40	1 lug per kit, 4 holes per lug
TMP3FB8R	800	(4) 3/0-750	(4) 3/0-750	TMPL40	1 lug per kit, 4 holes per lug
TMPFB12R	1200	(4) 2-500	(4) 2-500		
TMP3FB12R	1200	(8) 2-600, (4 lugs, 2-holes per lug)			
TMPFB12RT	1200	(4) 2-600, 2 lugs per phase	(4) 2-600		
TMP3FB12RT	1200	(4) 2-600, 2 lugs per phase	(4) 2-600		
TMP3FT16R	1600	(5) 4-600	(5) 4-600		
TMP3FB16R	1600	(8) 2-600	(8) 2-600		
TMP3FT20R	2000	(6) 4-600	(6) 4-600		
TMP3FB20R	2000	(8) 2-600	(8) 2-600		
TMPFB4RCLL	400	Accepts compression lugs, 1 landings per phase			
TMP3FB4RCLL	400	Accepts compression lugs, 1 landings per phase			
TMPFB6RCLL	600	Accepts compression lugs, 2 landings per phase			
TMP3FB6RCLL	600	Accepts compression lugs, 2 landings per phase			
TMPFB8RCLL	800	Accepts compression lugs, 2 landings per phase			
TMP3FB8RCLL	800	Accepts compression lugs, 2 landings per phase			
TMPFB12RCLLT	1200	Accepts compression lugs, 3 landings per phase			
TMP3FB12RCLLT	1200	Accepts compression lugs, 3 landings per phase			

Main Switch	Amp Rating	Optional Lug Kit: Phase		Optional Lug Kit: Compression	
		Wire Size	GE Lug Kit Product No.	Wire Size	GE Lug Kit Product No.
TMPFT4R	400	(4) 3/0-750, 4 cables per lug	TMPL40	Compression	TMP3F8CLL1
TMP3FT4R	400	(4) 3/0-750, 4 cables per lug	TMPL40	Compression	TMP3F8CLL1
TMPFT6R	600	(4) 3/0-750, 4 cables per lug	TMPL40	Compression	TMP3F8CLL1
TMP3FT6R	600	(4) 3/0-750, 4 cables per lug	TMPL40	Compression	TMP3F8CLL1
TMPFT8R	800	Not available	Not available	Compression	TMP3F8CLL1
TMP3FT8R	800	Not available	Not available	Compression	TMP3F8CLL1
TMPFB4R	400	(4) 3/0-750, 4 cables per lug	TMPL40	Compression	TMP3F8CLL1
TMP3FB4R	400	(4) 3/0-750, 4 cables per lug	TMPL40	Compression	TMP3F8CLL1
TMPFB6R	600	(4) 3/0-750, 4 cables per lug	TMPL40	Compression	TMP3F8CLL1
TMP3FB6R	600	(4) 3/0-750, 4 cables per lug	TMPL40	Compression	TMP3F8CLL1
TMP3FB8R	800	Not available	Not available	Compression	TMP3F8CLL1
TMP3FB8R	800	Not available	Not available	Compression	TMP3F8CLL1



Modular Metering

Meter Mod III

Main Fusible w/Pull Box and Main Lug Modules
Single-Phase and Three-Phase

Section 2



TMP3L6R

Main Fusible Switch w/Integral Pull Box Single-Phase, Three-Wire 120/240 Vac

End or center mounting. Lugs not included. Meets EUSERC requirements. When meter stacks are to be mounted on handle side of switch order TMPS12 spacer. All modules accept Class T fuse.

Wire Entry	Main Ampere Rating	IC Rating (Max)	Main Wire Size AWG/kcmil Cu/Al - Phase	Main Wire Size AWG/kcmil Cu/Al - Neutral	Compression Lug Landing Kit	Product Number
Bottom	400	100 kAIC	Compression Lug Landing Kit Included (NEMA 2-Hole Spacing)	Compression Lug Landing Kit Included (NEMA 2-Hole Spacing)	Included	TMPFB4RCLL
Bottom	600	100 kAIC	Compression Lug Landing Kit Included (NEMA 2-Hole Spacing)	Compression Lug Landing Kit Included (NEMA 2-Hole Spacing)	Included	TMPFB6RCLL
Bottom	800	100 kAIC	Compression Lug Landing Kit Included (NEMA 2-Hole Spacing)	Compression Lug Landing Kit Included (NEMA 2-Hole Spacing)	Included	TMPFB8RCLL
Bottom	1200 ¹	100 kAIC	Compression Lug Landing Kit Included (NEMA 2-Hole Spacing)	Compression Lug Landing Kit Included (NEMA 2-Hole Spacing)	Included	TMPFB12RCLLT

Main Fusible Switch w/Integral Pull Box Three-Phase, Four-Wire / Single-Phase, Three-Wire 120/240 Vac, 208Y/120 Vac, 240/120 Vac

End or center mounting. Lugs not included. Meets EUSERC requirements. When meter stacks are to be mounted on handle side of switch, order TMPS12 spacer. All modules accept Class T fuse.

Wire Entry	Main Ampere Rating	IC Rating (Max)	Main Wire Size AWG/kcmil Cu/Al - Phase	Main Wire Size AWG/kcmil Cu/Al - Neutral	Compression Lug Landing Kit	Product Number
Bottom	400	100 kAIC	Compression Lug Landing Kit Included (NEMA 2-Hole Spacing)	Compression Lug Landing Kit Included (NEMA 2-Hole Spacing)	Included	TMP3FB4RCLL
Bottom	600	100 kAIC	Compression Lug Landing Kit Included (NEMA 2-Hole Spacing)	Compression Lug Landing Kit Included (NEMA 2-Hole Spacing)	Included	TMP3FB6RCLL
Bottom	800	100 kAIC	Compression Lug Landing Kit Included (NEMA 2-Hole Spacing)	Compression Lug Landing Kit Included (NEMA 2-Hole Spacing)	Included	TMP3FB8RCLL
Bottom	1200	100 kAIC	Compression Lug Landing Kit Included (NEMA 2-Hole Spacing)	Compression Lug Landing Kit Included (NEMA 2-Hole Spacing)	Included	TMP3FB12RCLLT

Main Lug Single-Phase, Three-Wire 120/240 Vac

End or center mounting. Lugs included.

Wire Entry	Main Ampere Rating	IC Rating ² (Max)	Main Wire Size AWG/kcmil Cu/Al - Phase	Main Wire Size AWG/kcmil Cu/Al - Neutral	Stud sets per Phase and Neutral	Compression Lug Landing Kit	Product Number
Bottom / Top	400						Use 3-Phase
Bottom / Top	600						Use 3-Phase
Bottom/Top	800	100 kAIC	(2) 1/0-750 or (4) 1/0-300	(2) 1/0-750 or (4) 1/0-300	2	Order Separately	TMPL8R
Bottom/Top	1200	100 kAIC	(3) 1/0-750 or (6) 1/0-300	(3) 1/0-750 or (6) 1/0-300	3	Order Separately	TMPL12R
Bottom/Top	1600	100 kAIC	(6) 250-500	(6) 250-500	3	Order Separately	TMPL16R

Main Lug Three-Phase, Four-Wire / Single-Phase, Three-Wire 120/240 Vac, 208Y/120 Vac

End or center mounting. Lugs included.

Wire Entry	Main Ampere Rating	IC Rating ² (Max)	Main Wire Size AWG/kcmil Cu/Al - Phase	Main Wire Size AWG/kcmil Cu/Al - Neutral	Stud sets per Phase and Neutral	Compression Lug Landing Kit	Product Number
Bottom/Top	400	100 kAIC	(1) 6-600 or (2) 1/0-250	(1) 6-600 or (2) 1/0-250	1	Order Separately	TMP3L4R
Bottom/Top	400	100 kAIC	(1) 6-600 or (2) 1/0-250	(1) 6-600 or (2) 1/0-250	1	Order Separately	TMP3L4RCU ³
Bottom/Top	600	100 kAIC	(2) 250-500	(2) 250-500	1	Order Separately	TMP3L6R
Bottom/Top	600	100 kAIC	(2) 250-500	(2) 250-500	1	Order Separately	TMP3L6RCU ³
Bottom/Top	800	100 kAIC	(2) 1/0-750 or (4) 1/0-300	(2) 1/0-750 or (4) 1/0-300	2	Order Separately	TMP3L8R
Bottom/Top	800	100 kAIC	(2) 1/0-750 or (4) 1/0-300	(2) 1/0-750 or (4) 1/0-300	2	Order Separately	TMP3L8RCU ³
Bottom/Top	1200	100 kAIC	(3) 1/0-750 or (6) 1/0-300	(3) 1/0-750 or (6) 1/0-300	2	Order Separately	TMP3L12R
Bottom/Top	1600	100 kAIC	(6) 250-500	(6) 250-500	2	Order Separately	TMP3L16R

Main Lug with Feed Through, Three Phase, Four Wire / Single Phase, Three Wire 120/240 Vac, 208Y/120 Vac

Wire Entry	Main Ampere Rating	IC Rating (Max)	Incoming Line	Outgoing Load	Stud sets per Phase and Neutral	Compression Lug Landing Kit	Product Number
Bottom/Top	1200	100 kAIC	(5) Up to 750 MCM per Phase/Neutral (AL/CU)	(5) Up to 750 MCM per Phase/Neutral (AL/CU)	2	—	TMP3L12RCRIS
Bottom/Top	1600	100 kAIC	(5) Up to 750 MCM per Phase/Neutral (AL/CU)	(5) Up to 750 MCM per Phase/Neutral (AL/CU)	2	—	TMP3L16RCRIS

¹Center-feed only for single-phase meter modules with 800A horizontal bus rating.

²Limited to the lowest marked short circuit rating of the main and meter modules used.

³Copper bus.



Modular Metering Meter Mod III

Main Lug Modules Single-Phase and Three-Phase

Section 2

Factory Installed Lug Kit

Main Lug (Terminal Box)	Amp Rating	Phase Wire Size	Neutral Wire Size	GE Lug Kit Product No.	Lugs Per Kit	Total Lugs Per Device
TMP3L4R	400	(1) 2/0-600 or (2) #6-250	(1) 2/0-600 or (2) #6-250	TMMLK1(w/ instr)	1 lug/kit, 1 lug per phase, 2 hole lug	
TMP3L6R	600	(2) 250-500 per lug	(2) 250-500 per lug	TMPAL30	1 lug per kit, 1 lug per phase	
TMPL8R	800	(2) 1/0-750 or (4) 1/0-300	(2) 1/0-750 or (4) 1/0-300	TMPL750	2 lugs per phase, 3 lugs per kit	
TMP3L8R	800	(2) 1/0-750 or (4) 1/0-300	(2) 1/0-750 or (4) 1/0-300	TMPL750	2 lugs per phase, 3 lugs per kit	
TMPL12R	1200	(3) 1/0-750 or (6) 1/0-300	(3) 1/0-750 or (6) 1/0-300	TMPL750	3 lugs per phase, 3 lugs per kit	
TMP3L12R	1200	(3) 1/0-750 or (6) 1/0-300	(3) 1/0-750 or (6) 1/0-300	TMPL750	3 lugs per phase, 3 lugs per kit	
TMPL16R	1600	(6) 250-500	(6) 250-500	TMPAL30	1 lug per kit, 3 lugs per phase	9 lugs total
TMP3L16R	1600	(6) 250-500	(6) 250-500	TMPAL30	1 lug per kit, 3 lugs per phase	12 lugs total

Main Lug (Terminal Box)	Amp Rating	Optional Lug Kit: Phase			Optional Lug Kit: Compression		
		Wire Size	GE Lug Kit Product No.	Lugs Per Kit	Wire Size	GE Lug Kit Product No.	Lugs Per Kit
TMP3L4R	400	(2) 250-500 per lug	TMPAL30	1 lug per kit, 1 lug per phase	Compression	TMP3L6CCLL	2 studs per phase, double stack for up to 2 conductors per phase
TMP3L6R	600	Not available			Compression	TMP3L6CCLL	2 studs per phase, double stack for up to 2 conductors per phase
TMPL8R	800	(2) 250-500	TMPAL30	1 lug per kit, 1 lug per phase	Compression	TMP3L12CCLL1	4 studs per phase, double stack for up to 4 conductors per phase
TMP3L8R	800	(2) 250-500	TMPAL30	1 lug per kit, 1 lug per phase	Compression	TMP3L12CCLL1	4 studs per phase, double stack for up to 4 conductors per phase
TMPL12R	1200	(2) 250-500	TMPAL30	1 lug per kit, 1 lug per phase	Compression	TMP3L12CCLL1	4 studs per phase, double stack for up to 4 conductors per phase
TMP3L12R	1200	(2) 250-500	TMPAL30	1 lug per kit, 1 lug per phase	Compression	TMP3L12CCLL1	4 studs per phase, double stack for up to 4 conductors per phase
TMPL16R	1600	(4) 1/0-750 or (8) 1/0-300	TMP3L16BLK	1 kit per device, 4 connector assy's w/4 lugs each (16 total lugs), 1 assy/phase	Compression	TMP3L16CCLL1	
TMP3L16R	1600	(4) 1/0-750 or (8) 1/0-300	TMP3L16BLK	1 kit per device, 4 connector assy's w/4 lugs each (16 total lugs), 1 assy/phase	Compression	TMP3L16CCLL1	



Modular Metering Meter Mod III

Main Pull Box Modules and Accessories
Single-Phase and Three-Phase

Section 2



TMPU4R

Main Pull Box Single-Phase, Three-Wire 120/240 Vac

End mounting. Lugs only included; cross bus not included.

Wire Entry	Main Ampere Rating	IC Rating ¹ (Max)	Main Wire Size AWG/kcmil Cu/Al - Phase	Main Wire Size AWG/kcmil Cu/Al - Neutral	Stud sets per Phase and Neutral	Compression Lug Landing Kit	Product Number
Bottom/Top	400	100 kAIC	(1) 1/0-750 or (2) 1/0-300 (Load)	(1) 1/0-750 or (2) 1/0-300 (Load)	1	Included	TMPU4R
Bottom/Top	800	100 kAIC	(2) 1/0-750 or (4) 1/0-300 (Load)	(2) 1/0-750 or (4) 1/0-300 (Load)	2	Included	TMPU8R
Bottom/Top	1200	100 kAIC	(4) 2-600 (Load)	(4) 2-600 (Load)	3	Included	TMPU12R

¹Limited to the lowest marked short circuit rating of the main and meter modules used.

Main Pull Box Three-Phase, Four-Wire / Single-Phase, Three-Wire 120/240 Vac, 208Y/120 Vac, 240/120 Vac

End or center mounting. Lugs only included; cross bus not included.

Wire Entry	Main Ampere Rating	IC Rating ¹ (Max)	Main Wire Size AWG/kcmil Cu/Al - Phase	Main Wire Size AWG/kcmil Cu/Al - Neutral	Stud sets per Phase and Neutral	Compression Lug Landing Kit	Product Number
Bottom/Top	400	100 kAIC	(1) 1/0-750 or (2) 1/0-300 (Load)	(1) 1/0-750 or (2) 1/0-300 (Load)	1	Included	TMP3U4R
Bottom/Top	800	100 kAIC	(2) 1/0-750 or (4) 1/0-300 (Load)	(2) 1/0-750 or (4) 1/0-300 (Load)	2	Included	TMP3U8R
Bottom/Top	1200	100 kAIC	(4) 2-600 (Load)	(4) 2-600 (Load)	3	Included	TMP3U12R

¹Limited to the lowest marked short circuit rating of the main and meter modules used.

Class T Fuses

Frame Size	Ampere Rating	Product Number
400	250	TFUSE250
400	300	TFUSE300
400	350	TFUSE350
400	400	TFUSE400
600	500	TFUSE500
600	600	TFUSE600
800	800	TFUSE800
1200	1200	A3T1200

Factory Installed Lug Kit

Main Pull Box	Amp Rating	Phase		Neutral Wire Size	GE Lug Kit Product No.	Lugs Per Kit
		Description	Wire Size			
TMPU4R	400	(1) 1/0-750 or (2) 1/0-300 (Load)	(1) 1/0-750 or (2) 1/0-300 (Load)	(1) 1/0-750 or (2) 1/0-300 (Load)	TMPL750	1 lug per phase, 3 lugs per kit
TMP3U4R	400	(1) 1/0-750 or (2) 1/0-300 (Load)	(1) 1/0-750 or (2) 1/0-300 (Load)	(1) 1/0-750 or (2) 1/0-300 (Load)	TMPL750	1 lug per phase, 3 lugs per kit
TMPU8R	800	(2) 1/0-750 or (4) 1/0-300 (Load)	(2) 1/0-750 or (4) 1/0-300 (Load)	(2) 1/0-750 or (4) 1/0-300 (Load)	TMPL750	2 lugs per phase, 3 lugs per kit
TMP3U8R	800	(2) 1/0-750 or (4) 1/0-300 (Load)	(2) 1/0-750 or (4) 1/0-300 (Load)	(2) 1/0-750 or (4) 1/0-300 (Load)	TMPL750	2 lugs per phase, 3 lugs per kit
TMPU12R	1200	(4) 2-600 (load)	(4) 2-600 (load)	(4) 2-600 (load)		
TMP3U12R	1200	(4) 2-600 (load)	(4) 2-600 (load)	(4) 2-600 (load)		

Lug and Neutral Kits

Description	Product Number
Accepts (4) 3/0-750 mcm for use with 400 and 600 amp switch	TMPL40
(2) 250-500 mcm for use with 800 and 1200 amp main lug	TMPAL30
Neutral Kit, for 1600A and 2000A Main Breaker	TMBP2000N
Lug Kit, for 1200A Main Lug device (3) 1/0-750 or (6) 1/0-300	TMP3L12BLK
Lug Kit, for 1600A main lug device, (8) 1/0-300 or (4)2-750 mcm	TMP3L16BLK
Crimp Lug Pad Kit(4) 1600A Main Lug	TMP3L16CLL ³
Alternate Lug Kit for 1400A and 1600A Main Breaker	TMPL2000RD

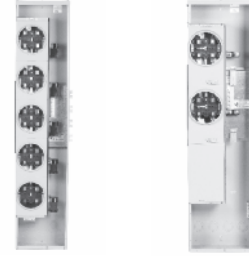
³Single lug but can put up to 2 lugs per phase on main.



Modular Metering Meter Mod III

Meter Stack Modules
Single-Phase
Plus Accessories

Section 2



TMP8512R

TMPR8220R

Product Features

- UL listed
- 800 amp, 4-wire cross bus (aluminum), except where noted below.
- Ring-type and Ringless Sockets
- Front Accessible Field Phase Balancing by Meter Module
- (1) 14-4 Equipment Ground per Socket, Factory Installed

Ring Type Socket - 800A Horizontal Bussing

Socket Amps	No. of Sockets	Standard Product Number	MEG Product Number ²
125A	2	TMP8212R	TMP8212RF
125A	3	TMP8312R	TMP8312RF
125A	4	TMP8412R	TMP8412RF
125A	5	TMP8512R	TMP8512RF
125A	6	TMP8612R	TMP8612RF
200A	2	TMP8220R	Use TMP8320RF
200A	3	TMP8320R	TMP8320RF
200A	4	TMP8420R	TMP8420RF
200A	5	TMP8520R	Use two smaller sections
200A	5	TMP8520RBUS ³	Use two smaller sections

One snap-type, aluminum sealing ring (TSR5) per socket included.

Ringless Type Socket - 800A Horizontal Bussing (Includes 5th Jaw Standard)

Socket Amps	No. of Sockets	Standard Product Number	MEG Product Number ²	Horned Bypass Product Number ¹	MEG & Horned Bypass Product Number ²
125A	2	TMPR8212R	TMPR8212RF	TMPR8212RHB	TMPR8212RHBF ¹
125A	3	TMPR8312R	TMPR8312RF	TMPR8312RHB	TMPR8312RHBF ¹
125A	4	TMPR8412R	TMPR8412RF	TMPR8412RHB	TMPR8412RHBF ¹
125A	5	TMPR8512R	TMPR8512RF	TMPR8512RHB	Use TMPR8512RF+ TMBPH20A
125A	6	TMPR8612R	TMPR8612RF	TMPR8612RHB	Use TMPR8612RF+ TMBPH20A
200A	2	TMPR8220R	Use TMPR8320RF	TMPR8220RHB	Use TMPR8220RHB+ TMBPH20A
200A	3	TMPR8320R	TMPR8320RF	TMPR8320RHB	Use TMPR8320RHB+ TMBPH20A
200A	4	TMPR8420R	TMPR8420RF	TMPR8420RHB	TMPR8420RHBF ¹
200A	5	TMPR8520R	TMPR8520RF	TMPR8520RHB	Use TMPR8520RHB+ TMBPH20A
200A	5	TMPR8520RBUS ³	Use TMPR8520RF	TMPR8520RHBUS ³	Use TMPR8520RF+ TMBPH20A

¹Includes horn by-pass.

²"F" units have an additional cotter pin that has been added to the meter socket assembly that will keep the meter socket from detaching from the base. This change meets the new MEG requirements.

³Parts with "BUS" on the end have the horizontal bussing centerline on the 3rd meter rather than 2nd meter, making the unit shorter from the centerline for applications where height of top meter may be an issue.

Product Features

- UL listed
- 1200 amp, 4-wire cross bus (aluminum)
- Ring-type and Ringless Sockets
- Front Accessible Field Phase Balancing by Meter Module
- (1) 14-4 Equipment Ground per Socket, Factory Installed

Ring-Type Socket - 1200A Horizontal Bussing

Socket Amps	No. of Sockets	Standard Product Number	MEG Product Number ²
125A	2	TMP12212R	TMP12212RF
125A	3	TMP12312R	TMP12312RF
125A	4	TMP12412R	TMP12412RF
125A	5	TMP12512R	TMP12512RF
125A	6	TMP12612R	TMP12612RF
200A	2	TMP12220R	TMP12220RF
200A	3	TMP12320R	TMP12320RF
200A	4	TMP12420R	TMP12420RF
200A	5	TMP12520R	TMP12520RF
200A	5	TMP12520RBUS ³	Use TMP12520RF

Ringless Type Socket - 1200A Horizontal Bussing (Includes 5th Jaw Standard)

Socket Amps	No. of Sockets	Standard Product Number	MEG Product Number ²	Horned Bypass Product Number ¹	MEG & Horned Bypass Product Number ²
125A	2	TMPR12212R	TMPR12412RF+ (2) TMCB12B	TMPR12212RHB	TMPR12412RF+ (2) TMCB12B+ (1) TMPBH20A
125A	3	TMPR12312R	TMPR12412RF+ (1) TMCB12B	TMPR12312RHB	TMPR12412RF+ (1) TMCB12B+ (1) TMPBH20A
125A	4	TMPR12412R	TMPR12412RF	TMPR12412RHB	TMPR12412RHBF ¹
125A	5	TMPR12512R	TMPR12512RF	TMPR12512RHB	TMPR12512RHBF ¹
125A	6	TMPR12612R	TMPR12612RF	TMPR12612RHB	TMPR12612RF+ TMBPH20A
200A	2	TMPR12220R	TMPR12420RF+ (2) TMCB20B	TMPR12220RHB	TMPR12420RF+ (2) TMCB20B+ (1) TMPBH20A
200A	3	TMPR12320R	TMPR12420RF+ (1) TMCB20B	TMPR12320RHB	TMPR12420RF+ (1) TMCB20B+ (1) TMPBH20A
200A	4	TMPR12420R	TMPR12420RF	TMPR12420RHB	TMPR12420RHBF ¹
200A	5	TMPR12520R	TMPR12520RF	TMPR12520RHB	TMPR12520RF+ TMBPH20A
200A	5	TMPR12520RBUS ³	Use TMPR12520RF	TMPR12520RHBUS ³	Use TMPR12520RF+ TMBPH20A

Ring Type Socket Factory Phase Balanced (w/Copper Bus)

Socket Amps	No. of Sockets	Product Number
125A	2	TMP8212RAB
125A	2	TMP8212RAC
125A	2	TMP8212RBC
125A	3	TMP8312RAB
125A	3	TMP8312RAC
125A	3	TMP8312RBC
125A	4	TMP8412RAB
125A	4	TMP8412RAC
125A	4	TMP8412RBC



Modular Metering

Meter Mod III

Meter Stack Modules
Single-Phase
Plus Accessories

Tenant Main Circuit Breakers 10,000 AIC

Socket Amps	Ampere Rating	Wire Size Load Lugs	Product Number
125	60	(1) #8-#3 CU; #8-#3 AL	THQL2160
125	70	(1) #6-1/0 CU; #4-#1/0 AL	THQL2170
125	80	(1) #6-1/0 CU; #4-#1/0 AL	THQL2180
125	90	(1) #6-1/0 CU; #4-#1/0 AL	THQL2190
125	100	(1) #6-1/0 CU; #4-#1/0 AL	THQL21100
125	110	(1) #6-1/0 CU; #4-#1/0 AL	THQL21110
125	125	(1) #2-2/0 CU; #2-2/0 AL	THQL21125
125	125	(1) #2-2/0 CU; #2-2/0 AL	TMQL21125SF ¹
200	100	(1) #1-300 CU; #1-300 AL	TQD22100
200	125	(1) #1-300 CU; #1-300 AL	TQD22125
200	150	(1) #1-300 CU; #1-300 AL	TQD22150
200	175	(1) #1-300 CU; #1-300 AL	TQD22175
200	200	(1) #1-300 CU; #1-300 AL	TQD22200

Tenant Main Circuit Breakers 22,000 AIC

Socket Amps	Ampere Rating	Wire Size Load Lugs	Product Number
125	60	(1) #8-3 CU; #8-2 AL	THHQL2160
125	70	(1) #6-1/0 CU; (1) #4 1/0	THHQL2170
125	80	(1) #6-1/0 CU; #4-1/0 AL	THHQL2180
125	90	(1) #6-1/0 CU; #4-1/0 AL	THHQL2190
125	100	(1) #6-1/0 CU; #4-1/0 AL	THHQL21100
125	110	(1) #6-1/0 CU; #4-1/0 AL	THHQL21110
125	125	(1) #2-2/0 CU; # 2-2/ AL	THHQL21125
200	100	(1) #1-300 CU; #1-300 AL	THQD22100
200	125	(1) #1-300 CU; #1-300 AL	THQD22125
200	150	(1) #1-300 CU; #1-300 AL	THQD22150
200	175	(1) #1-300 CU; #1-300 AL	THQD22175
200	200	(1) #1-300 CU; #1-300 AL	THQD22200

Tenant Main Circuit Breakers 42,000 AIC

Socket Amps	Ampere Rating	Wire Size Load Lugs	Product Number
125	60	(1) #10-1/0 CU; #10-1/0 AL	TMQL2160
125	70	(1) #10-1/0 CU; #10-1/0 AL	TMQL2170
125	80	(1) #10-1/0 CU; #10-1/0 AL	TMQL2180
125	90	(1) #10-1/0 CU; #10-1/0 AL	TMQL2190
125	100	(1) #10-1/0 CU; #10-1/0 AL	TMQL21100
125	125	(1) #10-1/0 CU; #10-1/0 AL	TMQL21125

Tenant Main Circuit Breakers 100,000 AIC

Socket Amps	Ampere Rating	Wire Size Load Lugs	Product Number
200	60	(1) #6-1/0 CU; #6-1/0 AL	TMQD22060
200	70	(1) #6-1/0 CU; #6-1/0 AL	TMQD22070
200	80	(1) #6-1/0 CU; #6-1/0 AL	TMQD22080
200	90	(1) #6-1/0 CU; #6-1/0 AL	TMQD22090
200	100	(1) #6-4/0 CU; #6-4/0 AL	TMQD22100
200	125	(1) #6-4/0 CU; #6-4/0 AL	TMQD22125
200	150	(1) #6-4/0 CU; #6-4/0 AL	TMQD22150
200	175	(1) #6-4/0 CU; #6-4/0 AL	TMQD22175
200	200	(1) #6-4/0 CU; #6-4/0 AL	TMQD22200

¹Sub-feed lug, no overcurrent protection.



Modular Metering Meter Mod III

Meter Stack Modules
Single-Phase
Plus Accessories

Section 2

Accessories - Field Installed

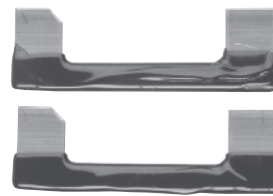
Description	Product Number
By-pass Kits	
Manual Slider-Type (Ring Type Only)	
-125 amp top socket for 2, 3, 5 and 6 gang	TMBPM12TA ²
-125 amp for all other sockets	TMBPM12A ²
-200 amp for all sockets	TMBPM20A ²
Jumper Straps Type (use with TMCA)	TMBPJ20 ^{1,3}
Cover Including Jumper Strap Type-fits all (Ring Type Only)	TMBPC20 ¹
Horn-Type-fits all (Ringless Only)	TMBPH20A ³
Fifth Jaw Kits	
-Bused; 3, 6, or 9 o'clock mounting:	TM5JA
-Order two for fifth and sixth jaw. Not suitable for 2-gang ring type	
-Isolated; 3 or 9 o'clock mounting	TM5JUA
Sealing Rings	
-Screw-Type, Aluminum	TSR1
-Snap Type, Stainless Steel	TSR3
-Screw and Lock-Type, Aluminum	TSR4
-Snap-Type, Aluminum (Standard)	TSR5
Steel Meter Socket Covers	
Blank (fits bottom position only)	
-125 Amp	TMCB12B
-200 Amp	TMCB20B
Ringless (Field -converts ring-type to ringless)	
-125 amp top socket for 2 and 3 gang	TMCR12T
-125 amp for all other sockets	TMCR12
-200 amp for all sockets	TMCR20
Lexan Meter socket Cover Plate (without tabs)	TMCA
Lexan Meter Socket Cover Plate	TMCP
Equipment Ground Bar, (6) 6-2/0	TMEG
Individual Meter Socket Barrier Kit (includes 6)	TMBR
Mounting Z-Rail, 4-foot	TMZR
Spacer	4-inch, TMPS12
Elbow	4 cross bus rated 1200A, 16 inch x 16 inch, TMPE12 ⁴
Elbow	4 cross bus rated 1200A, 12 inch x 12 inch, TMPE12A ⁴
Main Module Door	Barrier Kit, Bottom TMP3FBB
Closure Kit	Feed Main
Anti-Inversion Clip	TMIC
Endwall	TM234BEW200
Endwall	TM56BEW200
TQD Mounting Kit	TQD Breaker Mounting Kit - This is a replacement part. Units come with this part factory installed. TMTQD3

¹Not UL Listed.

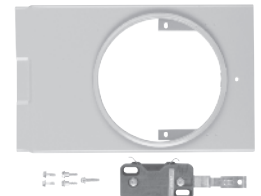
²200 amps continuous.

³100 amps continuous.

⁴Indoor Type 1.



TMBPJ20



TMBPM12TA



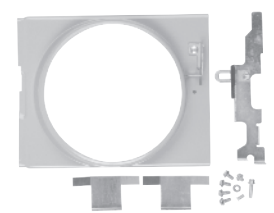
TSR1



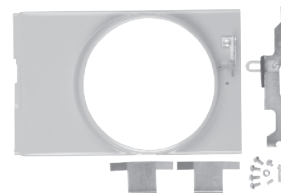
TSR3



TMCB12B



TMCR12



TMCR12T



TMCP



TMBR



TMZR



Modular Metering Meter Mod III

Meter Stack Modules
Single-Phase
Plus Accessories

Section 2

Product Features

- Single-Phase/Three-Wire, 120/240 Vac or Three-Phase, Four-Wire, Horizontal Bus, 208Y/120 Vac System Voltage
- UL listed
- 1200 amp, 4-wire cross bus (aluminum)
- Front Accessible Field Phase Balancing by Meter Socket
- (1) 14-2 Equipment Ground per Socket, Factory Installed
- Only 225A and 400 Ringless Type meter stacks, contain lever bypass. 125A and 200A meter sockets do not contain lever bypass



TMPR12122R

Ringless Type Socket w/ Lever Bypass

Socket Amps	No. of Sockets	Product Number
225A	1	TMPR12122R ^{1,5}
225A	2	TMPR12222R ^{1,5}
225A	3	TMPR12322R ^{1,5}
225A	4	TMPR12422R ^{1,5}
400A	1	TMPR12140RB ^{1,2,9}
400A	2	TMPR12240RB ^{1,3,9}
400A	1	TMPK12140RB ¹
400A	1	TMPK12140RBA ¹

Ring Type Socket

Socket Amps	No. of Sockets	Product Number
225A	1	TMP8120RTAB ^{4,5}
225A	1	TMP8120RTBC ^{4,5}
225A	1	TMP8120RTAC ^{4,5}
225A	2	TMP112220RTAB ^{4,5}
225A	2	TMP112220RTAC ^{4,5}
225A	2	TMP112220RTBC ^{4,5}
225A	3	TMP112320RTAB ^{4,5}
225A	3	TMP112320RTAC ^{4,5}
225A	3	TMP112320RTBC ^{4,5}

One snap-type, aluminum sealing ring (TSR5) per socket included.

Tenant Main Circuit Breakers 10,000 AIC

Socket Amps	Ampere Rating	Wire Size Load Lugs	Product Number
225	15	(1) #14-3 CU; #12-1 AL	TEB122015
225	20	(1) #14-3 CU; #12-1 AL	TEB122020
225	25	(1) #14-3 CU; #12-1 AL	TEB122025
225	30	(1) #14-3 CU; #12-1 AL	TEB122030
225	35	(1) #14-3 CU; #12-1 AL	TEB122035
225	40	(1) #14-3 CU; #12-1 AL	TEB122040
225	45	(1) #14-3 CU; #12-1 AL	TEB122045
225	50	(1) #14-3 CU; #12-1 AL	TEB122050
225	60	(1) #14-3 CU; #12-1 AL	TEB122060
225	70	(1) #14-3 CU; #12-1 AL	TEB122070
225	80	(1) #14-3 CU; #12-1 AL	TEB122080
225	90	(1) #14-3 CU; #12-1 AL	TEB122090
225	100	(1) #14-3 CU; #12-1 AL	TEB122100
225	125	(1) #1-300 CU; #1-300 AL	TQD22125
225	150	(1) #1-300 CU; #1-300 AL	TQD22150
225	175	(1) #1-300 CU; #1-300 AL	TQD22175
225	200	(1) #1-300 CU; #1-300 AL	TQD22200

Tenant Main Circuit Breakers 22,000 AIC

Socket Amps	Ampere Rating	Wire Size Load Lugs	Product Number
200	100	(1) #1-300 CU; #1-300 AL	THQD22100
200	125	(1) #1-300 CU; #1-300 AL	THQD22125
200	150	(1) #1-300 CU; #1-300 AL	THQD22150
200	175	(1) #1-300 CU; #1-300 AL	THQD22175
200	200	(1) #1-300 CU; #1-300 AL	THQD22200

Tenant Main Circuit Breakers 100,000 AIC

Socket Amps	Ampere Rating	Wire Size Load Lugs	Product Number
200	60	(1) #6-1/0 CU; # 6-1/0 AL	TMQD22060
200	70	(1) #6-1/0 CU; # 6-1/0 AL	TMQD22070
200	80	(1) #6-1/0 CU; # 6-1/0 AL	TMQD22080
200	90	(1) #6-1/0 CU; # 6-1/0 AL	TMQD22090
200	100	(1) #6-4/0 CU; #6-4/0 AL	TMQD22100
200	125	(1) #6-4/0 CU; #6-4/0 AL	TMQD22125
200	150	(1) #6-4/0 CU; #6-4/0 AL	TMQD22150
200	175	(1) #6-4/0 CU; #6-4/0 AL	TMQD22175
200	200	(1) #6-4/0 CU; #6-4/0 AL	TMQD22200

Accessories — Field Installed

Type	Description	Product Number
TEB Breaker		TMTEB
Mounting Kit		
Barrel Lock Bracket and Guard Kit		TMBL ⁶
Bypass Kit	Totalizing Jumper Type	TMBPT320 ^{6,7}
Blank Meter		
Socket Cover	Fits all positions	TMCB322A
Individual Meter		TMBR3
Socket Barrier Kit (Includes 6)		
Insulator for Lever		TMHN
By-pass Handle		
Mounting Z Rail	4-foot	TMZR
Spacer	4 inch, 4 cross bus rated, 1200A	TMPS12
Elbow	16 inch x 16 inch, 4 cross bus rated 1200A	TMPE12 ⁸
Elbow	12 inch x 12 inch, 4 cross bus rated 1200A	TMPE12A ⁸

¹Only 225A and 400A are lever bypass.

²One 400A tenant breaker included.

³Two 400A tenant breakers included.

⁴Meets EUSERC requirements. T- suffix signifies test bypass kit. Suffixes AB, BC, AC reflect the factory-set phase balancing.

⁵Included factory-installed fifth jaw (TM5JA Bused).

⁶Not UL listed.

⁷180 amps continuous.

⁸Indoor, Type 1.

⁹See Page 2-12 for alternate 400A Rating Plugs



Modular Metering Meter Mod III

Meter Stack Modules
Three-Phase
Plus Accessories

Section 2



TMPR312140RB

Product Features

- Three-Phase/Four-Wire, 240-120 Vac; Three-Phase/Four-Wire, 208V/120 Vac
- UL listed
- 1200 amp, 4-wire cross bus (aluminum)
- Front Accessible Field Phase Balancing by Meter Socket
- (1) 14-2 Equipment Ground per Socket, Factory Installed
- Swingaway Mounting Feet Factory Installed
- Only 225A and 400A sockets, Ringless Type, contain lever bypass. 125A + 200A meter sockets do not contain lever bypass.

Ringless Type Socket w/Lever Bypass. All units are 7-terminal except TMPK.

Socket Amps	No. of Sockets	Product Number
225A	1	TMPR312122R ⁸
225A	2	TMPR312222R ⁸
225A	3	TMPR312322R ⁸
225A	4	TMPR312422R ⁸
400A	1	TMPR312140TR ^{1,8}
400A	1	TMPR312140RB ^{2,8}
400A	2	TMPR312240RB ^{3,8}
400A	1	TMPR312140RB
400A	1	TMK312140RBA

Ring Type Socket 7-terminal units

Socket Amps	No. of Sockets	Product Number
200A	1	TMP3120RT ^{4,8}
200A	2	TMP312220RT ^{4,8}
200A	3	TMP312320RT ^{4,8}

Tenant Main Circuit Breakers 10,000 AIC

Socket Amps	Ampere Rating	Wire Size Load Lugs	Product Number
225/400/200	15	(1) #14-3 CU; #12-1 AL	TEB132015
225/400/200	20	(1) #14-3 CU; #12-1 AL	TEB132020
225/400/200	25	(1) #14-3 CU; #12-1 AL	TEB132025
225/400/200	39	(1) #14-3 CU; #12-1 AL	TEB132030
225/400/200	35	(1) #14-3 CU; #12-1 AL	TEB132035
225/400/200	40	(1) #14-3 CU; #12-1 AL	TEB132040
225/400/200	45	(1) #14-3 CU; #12-1 AL	TEB132045
225/400/200	50	(1) #14-3 CU; #12-1 AL	TEB132050
225/400/200	60	(1) #14-3 CU; #12-1 AL	TEB132060
225/400/200	70	(1) #6-2/0 CU; #4-2/0 AL	TEB132070
225/400/200	80	(1) #6-2/0 CU; #4-2/0 AL	TEB132080
225/400/200	90	(1) #6-2/0 CU; #4-2/0 AL	TEB132090
225/400/200	100	(1) #6-2/0 CU; #4-2/0 AL	TEB132100
225/400/200	125	(1) #1-300 CU; #1-300 AL	TQD32125
225/400/200	150	(1) #1-300 CU; #1-300 AL	TQD32150
225/400/200	175	(1) #1-300 CU; #1-300 AL	TQD32175
225/400/200	200	(1) #1-300 CU; #1-300 AL	TQD32200
225/400/200	225		Use TMQD

Tenant Main Circuit Breakers 22,000 AIC

Socket Amps	Ampere Rating	Wire Size Load Lugs	Product Number
225/400/200	100	(1) #1-300 CU; #1-300 AL	THQD32100
225/400/200	125	(1) #1-300 CU; #1-300 AL	THQD32125
225/400/200	150	(1) #1-300 CU; #1-300 AL	THQD32150
225/400/200	175	(1) #1-300 CU; #1-300 AL	THQD32175
225/400/200	200	(1) #1-300 CU; #1-300 AL	THQD32200
225/400/200	225		Use TMQD

Tenant Main Circuit Breakers 100,000 AIC

Socket Amps	Ampere Rating	Wire Size Load Lugs	Product Number
225/400/200	60	(1) #6-1/0 CU; #6-1/0 AL	TMQD32060
225/400/200	70	(1) #6-1/0 CU; #6-1/0 AL	TMQD32070
225/400/200	80	(1) #6-1/0 CU; #6-1/0 AL	TMQD32080
225/400/200	90	(1) #6-1/0 CU; #6-1/0 AL	TMQD32090
225/400/200	100	(1) #6-4/0 CU; #6-4/0 AL	TMQD32100
225/400/200	125	(1) #6-4/0 CU; #6-4/0 AL	TMQD32125
225/400/200	150	(1) #6-4/0 CU; #6-4/0 AL	TMQD32150
225/400/200	175	(1) #1/0-300 CU; 1/0-300 AL	TMQD32175
225/400/200	200	(1) #1/0-300 CU; 1/0-300 AL	TMQD32200
225/400/200	225	(1) #1/0-300 CU; 1/0-300 AL	TMQD32225

Accessories — Field Installed

Type	Description	Product Number
TEB Breaker		TMTEB
Mounting Kit		
Barrel Lock Bracket and Guard Kit		TMBL ⁵
Bypass Kit	Totalizing Jumper Type	TMBPT3205 ⁶
Replacement		TMPJ31 ⁵
Phase Balancing		
Jumper Kit		
Blank Meter		
Socket Cover	Fits all positions	TMCB322A
Individual Meter		TMBR3
Socket Barrier Kit (Includes 6)		
Insulator for Lever		TMHN
By-pass Handle		
Mounting Z Rail	4-foot	TMZR
Spacer	4 inch,	TMPS12
	4 cross bus rated, 1200A	
Elbow	16 inch x 16 inch,	TMPE12 ⁷
	4 cross bus rated 1200A	
Elbow	12 inch x 12 inch,	TMPE12A ⁷
	4 cross bus rated 1200A	

¹Requires two tenant main breakers, 400 amp maximum sum of branch ratings.

Cannot be used to serve a single 400A load.

²400 Amp tenant breaker included, 65 kAIC.

³Two 400 Amp tenant breakers included.

⁴Meets EUSERC requirements. "T" suffix indicates EUSERC test bypass kit included.

⁵Not UL listed.

⁶180 amps continuous.

⁷Indoor, Type 1, for inside corners only.

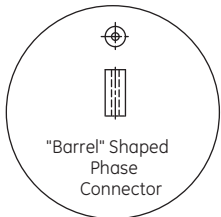
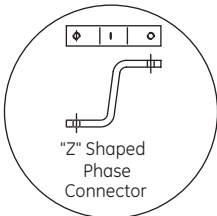
⁸These product numbers are shipped from the factory as 7-jaw units (7-terminal).



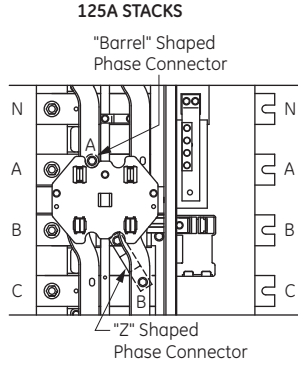
All three-phase meter stack modules come factory connected to phase A and B, per Figure A. When connected to a 208Y/120 Vac 3-phase, 4-wire system, field phase balancing of two out of every three stacks is required. One of every three stacks should be phased AC, per Figure B, and one of every three stacks should be phased CB, per Figure C.

Examples:

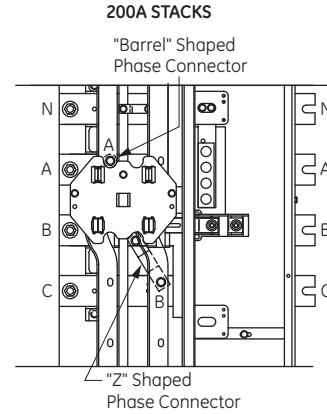
- 9 Total Positions—use (3) 3-position stacks and phase one per Figure B (A-C phasing) and one per Figure C (C-B) phasing.
- 16 Total Positions—use (2) 5-position and (2) 3-position stacks. Phase balance (1) 5-position per figure B (A-C phasing) and (1) 5-position per Figure C (C-B) phasing.
- 19 Total Positions—where 4 position maximum height is allowed by utility, use (1) 4-position and (5) 3-position stacks per Figure B (A-C phasing) and (2) e-position stacks per Figure C (C-B) phasing.



"Z" Shaped and "Barrel Shaped Phase Connectors

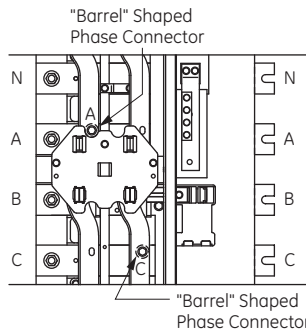


FACTORY 125A A-B PHASING



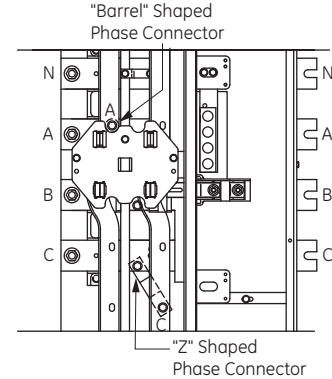
FACTORY 200A A-B PHASING

Figure A



FIELD 125A A-C PHASING

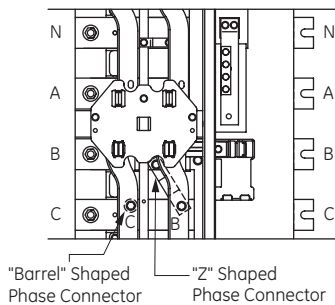
Remove "Z" Phase Connector from "B" Phase Horizontal Bus
Replace with "Barrel" Phase Connector supplied with meter stack and attach to "C" Phase Bus as shown.
Torque to 60 lb-in (6.78 N-M)
Retain "Z" Phase Connector for future use.



FACTORY 200A A-C PHASING

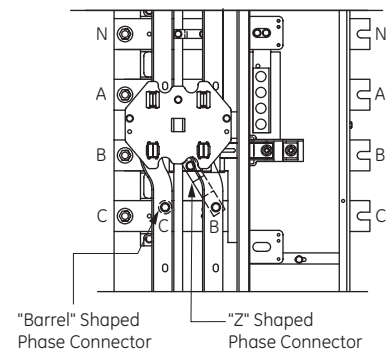
Remove "Z" Phase Connector from "B" Phase Horizontal Bus
Reattached at "C" Phase Horizontal Bus as Shown.
Torque to 60 lb-in (6.78 N-M)

Figure B



FIELD 125A C-B PHASING

Remove "Barrel" Phase Connector from "A" Phase Horizontal Bus
Reattached at "C" Phase Horizontal Bus as shown.
Torque to 60 lb-in (6.78 N-M)



FACTORY 200A C-B PHASING

Remove "Barrel" Phase Connector from "A" Phase Horizontal Bus
Reattached at "C" Phase Horizontal Bus as shown.
Torque to 60 lb-in (6.78 N-M)

Figure C





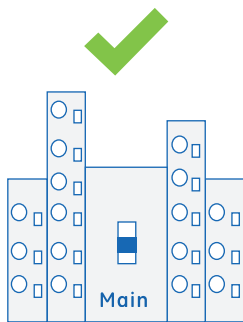
SUITABLE FOR CENTER-FEED APPLICATIONS ONLY*

*Horizontal bus is rated 1200 amps maximum. The load on the horizontal bus may not exceed 1200 amps in either direction from the point of connection of the main circuit breaker. Overall load is limited to the rating of the main circuit breaker.

For applications where the main module ampere rating is greater than that of the meter stack horizontal bus, **the main module must be placed in the middle of the lineup (Figure A)**. The engineer of record must provide calculations on the plans to show that the horizontal bussing will not be overloaded on either side. This situation, called “Center-Feeding”, can happen in either 800A or 1200A horizontal bus meter stack applications, depending on the main ampere rating. Refer to chart below for amperage and bus information. *NOTE: Figure B shows the incorrect configurations.*

Does the Application Require Electrician to Center-Feed the Main Module?

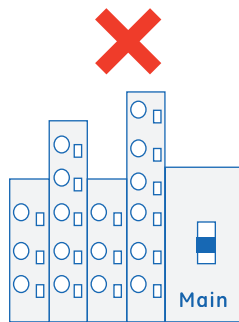
Amps of Main Breaker, Lug or Switch	800A Horizontal Bus	1200A Horizontal Bus
400A – 800A	No	No
1000A	Yes	No
1200A	Yes	No
1400A	Yes	Yes
1600A	Yes	Yes
2000A	Yes	Yes



Correct

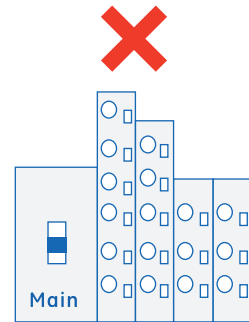
This configuration is centered and will balance the load between left and right-side horizontal bus leaving the main section

Figure A



Incorrect

This configuration will overload the left-side horizontal bus that leaves the main section



Incorrect

This configuration will overload the right-side horizontal bus that leaves the main section

Figure B



Dimensions

Description	Product Number	Figure No. ¹	Width (in inches)	Height (in inches)	Depth (in inches)	Section A (in inches)	Section B (in inches)
Mini Mod, 1P3W, 200A MLO, (2) 125A Ring sockets	TMM2212R, TMM2212RF	1	11.88	34.56	7.56	18.31	9.00
Mini Mod, 1P3W, 200A MLO, (2) 125A Ringless sockets	TMMR2212R, TMMR2212RF, TMMR2212RHB	1	11.88	34.56	7.56	18.31	9.00
Mini Mod, 1P3W, 400A MLO, (3) 125A Ring sockets	TMM4312R, TMM4312RF	3	24.25	48.31	7.00	21.56	9.00
Mini Mod, 1P3W, 400A MLO, (3) 125A Ringless sockets	TMMR4312R, TMMR4312RF, TMMR4312RHB	3	24.25	48.31	7.00	21.56	9.00
Mini Mod, 1P3W, 400A MLO, (4) 125A Ring sockets	TMM4412R, TMM4412RF	3	24.25	48.31	7.00	12.56	9.00
Mini Mod, 1P3W, 400A MLO, (4) 125A Ringless sockets	TMMR4412R, TMMR4412RF, TMMR4412RHB	3	24.25	48.31	7.00	12.56	9.00
Mini Mod, 1P3W, 600A MLO, (5) 125A Ring sockets	TMM6512R, TMM6512RF	2	36.28	41.59	7.00	12.56	9.00
Mini Mod, 1P3W, 600A MLO, (5) 125A Ringless sockets	TMMR6512R, TMMR6512RF, TMMR6512RHB	2	36.28	41.59	7.00	12.56	9.00
Mini Mod, 1P3W, 600A MLO, (6) 125A Ring sockets	TMM6612R, TMM6612RF	2	36.28	41.59	7.00	12.56	9.00
Mini Mod, 1P3W, 600A MLO, (6) 125A Ringless sockets	TMMR6612R, TMMR6612RF, TMMR6612RHB	2	36.28	41.59	7.00	12.56	9.00
Mini Mod, 1P3W, 400A MLO, (2) 200A Ring sockets	TMM4220R	5	25.50	42.69	7.00	18.44	12.13
Mini Mod, 1P3W, 400A MLO, (2) 200A Ringless sockets	TMMR4220R, TMMR4220RF, TMMR4220RHB	5	25.50	42.69	7.00	18.44	12.13
Mini Mod, 1P3W, 600A MLO, (3) 200A Ring sockets	TMM6320R, TMM6320RF	5	25.50	64.56	7.00	30.56	12.13
Mini Mod, 1P3W, 600A MLO, (3) 200A Ringless sockets	TMMR6320R, TMMR6320RF, TMMR6320RHB	5	25.50	64.56	7.00	30.56	12.13
Mini Mod, 1P3W, 600A MLO, (4) 200A Ring sockets	TMM6420R, TMM6420RF	5	25.50	64.56	7.00	18.44	12.13
Mini Mod, 1P3W, 600A MLO, (4) 200A Ringless sockets	TMMR6420R, TMMR6420RF, TMMR6420RHB	5	25.50	64.56	7.00	18.44	12.13
Mini Mod, 1P3W, 600A MLO, (5) 200A Ring sockets	TMM6520R	4	38.75	52.44	7.00	18.44	12.13
Mini Mod, 1P3W, 600A MLO, (5) 200A Ringless sockets	TMMR6520R, TMMR6520RF, TMMR6520RHB	4	38.75	52.44	7.00	18.44	12.13
Mini Mod, 1P3W, 600A MLO, (6) 200A Ring sockets	TMM6620R	4	38.75	52.44	7.00	18.44	12.13
Mini Mod, 1P3W, 600A MLO, (6) 200A Ringless sockets	TMMR6620R, TMM6620RF, TMMR6620RHB	4	38.75	52.44	7.00	18.44	12.13

¹Figures 2, 3 and 5 have removable drip hood and open end wall.

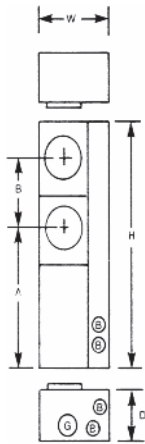


Figure 1

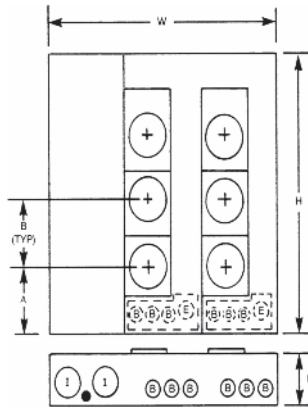


Figure 2

Knockouts

Symbol	•	A	B	C	D	E	F	G	H	I	J	K	L	
Conduit Size in Inches	1/2	1/2	-	-	-	-	-	-	-	-	-	-	-	
	3/4	-	-	-	-	-	-	-	-	-	-	-	-	
	1	1	1	1	1	1	1	1	1	1	1	1	1	
	1 1/4	-	1 1/4	1 1/4	1 1/4	1 1/4	1 1/4	1 1/4	1 1/4	1 1/4	1 1/4	1 1/4	1 1/4	
	1 1/2	-	-	2	2	2	2	2	2	2	2	2	2	
	1 3/4	-	-	-	-	2 1/2	2 1/2	2 1/2	2 1/2	2 1/2	2 1/2	2 1/2	2 1/2	
	2	-	-	-	-	-	-	3	3	3	3	3	3	-
	2 1/2	-	-	-	-	-	-	-	3 1/2	3 1/2	3 1/2	3 1/2	3 1/2	-
	3	-	-	-	-	-	-	-	-	4	4	4	4	-
	3 1/2	-	-	-	-	-	-	-	-	-	-	-	-	5

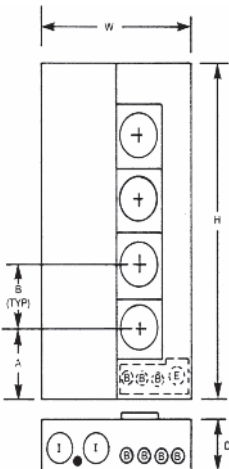


Figure 3

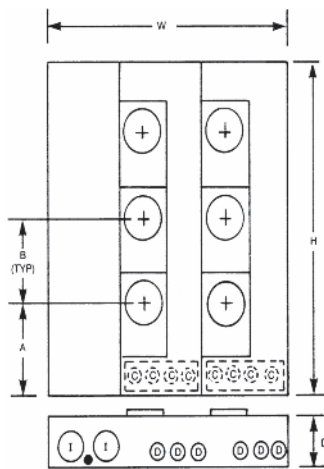


Figure 4

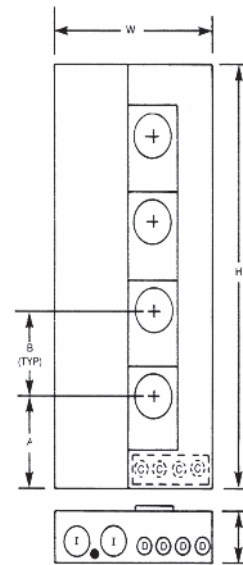


Figure 5



Dimensions

Description	Product Number	Figure No. ¹	Width (in inches)	Height (in inches)	Depth (in inches)	Section A (in inches)	Section B (in inches)
Meter Stack, 1P3W, (2) 125A Ring sockets, 800A horizontal bus	TMP8212R, TMP8212RF ³	1	12.26	41.60	6.62	21.61	9.00
Meter Stack, 1P3W, (2) 125A Ringless sockets, 800A horizontal bus	TMPR8212R, TMPR8212RHB ² , TMPR8212RF ³ , TMPR8212RHBF ^{2,3}	1	12.26	41.60	6.62	21.61	9.00
Meter Stack, 1P3W, (3) 125A Ring sockets, 800A horizontal bus	TMP8312R, TMP8312RF ³	1	12.26	41.60	6.62	21.61	9.00
Meter Stack, 1P3W, (3) 125A Ringless sockets, 800A horizontal bus	TMPR8312R, TMPR8312RHB ² , TMPR8312RF ³ , TMPR8312RHBF ^{2,3}	1	12.26	41.60	6.62	21.61	9.00
Meter Stack, 1P3W, (4) 125A Ring sockets, 800A horizontal bus	TMP8412R, TMP8412RF ³	1	12.26	48.50	6.62	21.61	9.00
Meter Stack, 1P3W, (4) 125A Ringless sockets, 800A horizontal bus	TMPR8412R, TMPR8412RHB ² , TMPR8412RF ³ , TMPR8412RHBF ^{2,3}	1	12.26	48.50	6.62	21.61	9.00
Meter Stack, 1P3W, (5) 125A Ring sockets, 800A horizontal bus	TMP8512R, TMP8512RF ³	1	12.26	57.50	6.62	21.61	9.00
Meter Stack, 1P3W, (5) 125A Ringless sockets, 800A horizontal bus	TMPR8512R, TMPR8512RHB ² , TMPR8512RF ³	1	12.26	57.50	6.62	21.61	9.00
Meter Stack, 1P3W, (6) 125A Ring sockets, 800A horizontal bus	TMP8612R, TMP8612RF ³	1	12.26	66.50	6.62	21.61	9.00
Meter Stack, 1P3W, (6) 125A Ringless sockets, 800A horizontal bus	TMPR8612R, TMPR8612RHB ² , TMPR8612RF ³	1	12.26	66.50	6.62	21.61	9.00
Meter Stack, 1P3W, (2) 125A Ring sockets, 800A horizontal bus	TMP8220R	2	13.38	52.36	6.62	30.55	12.13
Meter Stack, 1P3W, (2) 125A Ringless sockets, 800A horizontal bus	TMPR8220R, TMPR8220RHB ² , TMPR8220RF ³	2	13.38	52.36	6.62	30.55	12.13
Meter Stack, 1P3W, (3) 125A Ring sockets, 800A horizontal bus	TMP8320R, TMP8320RF ³	2	13.38	52.36	6.62	18.42	12.13
Meter Stack, 1P3W, (3) 125A Ringless sockets, 800A horizontal bus	TMPR8320R, TMPR8320RHB ² , TMPR8320RF ³	2	13.38	52.36	6.62	18.42	12.13
Meter Stack, 1P3W, (4) 125A Ring sockets, 800A horizontal bus	TMP8420R, TMP8420RF ³	2	13.38	64.51	6.62	18.42	12.13
Meter Stack, 1P3W, (4) 125A Ringless sockets, 800A horizontal bus	TMPR8420R, TMPR8420RHB ² , TMPR8420RF ³ , TMPR8420RHBF ^{2,3}	2	13.38	64.51	6.62	18.42	12.13
Meter Stack, 1P3W, (5) 125A Ring sockets, 800A horizontal bus	TMP8520R, TMP8520RFBUS ⁴	2	13.38	74.96	6.62	16.76	12.13
Meter Stack, 1P3W, (5) 125A Ringless sockets, 800A horizontal bus	TMPR8520R, TMPR8520RHB ² , TMPR8520RF ³ , TMPR8520RFBUS ⁴ , TMPR8520RHBBUS ^{2,4}	2	13.38	74.96	6.62	16.76	12.13
Meter Stack, 1P3W, (2) 125A Ring sockets, 1200A horizontal bus	TMP12212R, TMP12212RF ³	1	12.26	41.60	6.62	21.61	9.00
Meter Stack, 1P3W, (2) 125A Ringless sockets, 1200A horizontal bus	TMPR12212R, TMPR12212RHB ² , TMPR12412RF + (2) TMCB12B ³ , TMPR12212RHBF ^{2,3}	1	12.26	41.60	6.62	21.61	9.00
Meter Stack, 1P3W, (3) 125A Ring sockets, 1200A horizontal bus	TMP12312R, TMP12312RF ³	1	12.26	41.60	6.62	12.61	9.00
Meter Stack, 1P3W, (3) 125A Ringless sockets, 1200A horizontal bus	TMPR12312R, TMPR12312RHB ² , TMPR12412RF + (1) TMCB12B ³ , TMPR12312RHBF ^{2,3}	1	12.26	41.60	6.62	12.61	9.00
Meter Stack, 1P3W, (4) 125A Ring sockets, 1200A horizontal bus	TMP12412R, TMP12412RF ³	1	12.26	48.50	6.62	12.61	9.00
Meter Stack, 1P3W, (4) 125A Ringless sockets, 1200A horizontal bus	TMPR12412R, TMPR12412RHB ² , TMPR12412RF ³ , TMPR12412RHBF ^{2,3}	1	12.26	48.50	6.62	12.61	9.00
Meter Stack, 1P3W, (5) 125A Ring sockets, 1200A horizontal bus	TMP12512R, TMP12512RF ³	1	12.26	57.50	6.62	12.61	9.00
Meter Stack, 1P3W, (5) 125A Ringless sockets, 1200A horizontal bus	TMPR12512R, TMPR12512RHB ² , TMPR12512RF ³	1	12.26	57.50	6.62	12.61	9.00
Meter Stack, 1P3W, (6) 125A Ring sockets, 1200A horizontal bus	TMP12612R, TMP12612RF ³	1	12.26	66.50	6.62	12.61	9.00
Meter Stack, 1P3W, (4) 125A Ringless sockets, 1200A horizontal bus	TMPR12612R, TMPR12612RHB ² , TMPR12612RF ³	1	12.26	66.50	6.62	30.55	9.00
Meter Stack, 1P3W, (2) 200A Ring sockets, 1200A horizontal bus	TMP12220R	2	13.38	52.36	6.62	30.55	12.13
Meter Stack, 1P3W, (2) 200A Ringless sockets, 1200A horizontal bus	TMPR12220R, TMPR12220RHB ² , TMPR12420RF + (2) TMCB20B ³	2	13.38	52.36	6.62	18.42	12.13
Meter Stack, 1P3W, (3) 200A Ring sockets, 1200A horizontal bus	TMP12320R, TMP12320RF ³	2	13.38	52.36	6.62	18.42	12.13
Meter Stack, 1P3W, (3) 200A Ringless sockets, 1200A horizontal bus	TMPR12320R, TMPR12320RHB ² , TMPR12420RF + (1) TMCB20B ³	2	13.38	52.36	6.62	18.42	12.13
Meter Stack, 1P3W, (4) 200A Ring sockets, 1200A horizontal bus	TMP12420R, TMP12420RF ³	2	13.38	64.51	6.62	18.42	12.13
Meter Stack, 1P3W, (4) 200A Ringless sockets, 1200A horizontal bus	TMPR12420R, TMPR12420RHB ² , TMPR12420RF ³ , TMPR12420RHBF ^{2,3}	2	13.38	64.51	6.62	18.42	12.13
Meter Stack, 1P3W, (5) 200A Ring sockets, 1200A horizontal bus	TMP12520R, TMP12520RFBUS ⁴	2	13.38	74.96	6.62	16.76	12.13
Meter Stack, 1P3W, (5) 200A Ringless sockets, 1200A horizontal bus	TMPR12520R, TMPR12520RHB ² , TMPR12520RF ³ , TMPR12520RFBUS ⁴ , TMPR12520RHBBUS ^{2,4}	2	13.38	74.96	6.62	16.76	12.13
Single-Phase, Three-Wire	225 A TMPR12122R	3	18	25.375	8.75	13	-
Single-Phase, Three-Wire	225 A TMPR1222R	3	18	52.625	8.75	27	14
Single-Phase, Three-Wire	225 A TMPR12322R	3	18	52.625	8.75	13	14
Single-Phase, Three-Wire	225 A TMPR12422R	3	18	66.625	8.75	13	14
Single-Phase, Three-Wire	225 A TMPB120RTAB	12	21.375	25	8.75	-	-
Single-Phase, Three-Wire	225 A TMPB120RTAC	12	21.375	25	8.75	-	-

¹Figures referenced are on pages 2-29 and 2-30. Figures 1 through 8 have a removable top drip hood. Figure 4 has a removable top drip hood and open end wall.

²Includes horn by-pass.

³"F" units have an additional cotter pin that has been added to the meter socket assembly that will keep the meter socket from detaching from the base.

This change meets the new MEG requirements and should not be used outside of the state of Florida.

⁴Parts with "BUS" on the end have the horizontal bussing centerline on the 3rd meter rather than 2nd meter, making the unit shorter from the centerline for applications where height of top meter may be an issue.

This table continued on next page.



Dimensions

Description		Product Number	Figure No. ¹	Width (in inches)	Height (in inches)	Depth (in inches)	Section A (in inches)	Section B (in inches)
Single-Phase, Three-Wire	225 A	TMPB120RTBC	12	21.375	25	8.75	-	-
Single-Phase, Three-Wire	400 A	TMPR12140RB	3	18	52.625	8.75	27	-
Three-Phase, Four-Wire	225 A	TMPR312122R	3	18	25.375	8.75	13	-
Three-Phase, Four-Wire	400 A	TMPR312140TR	3	18	52.625	8.75	41	-
Three-Phase, Four-Wire	225 A	TMPR312222R	3	18	52.625	8.75	27	14
Three-Phase, Four-Wire	225 A	TMPR312322R	3	18	52.625	8.75	13	14
Three-Phase, Four-Wire	225 A	TMPR312422R	3	19	66.625	8.75	13	14
Three-Phase, Four-Wire	200 A	TMP312220RT	3	21.38	43.00	8.75	27	14
Three-Phase, Four-Wire	200 A	TMP312320RT	3	21.38	62.44	8.75	13	14
Three-Phase, Four-Wire	400 A	TMPR312140RB	3	18	52.625	8.75	27	-
Main Breaker Modules		TMP5B4R	4	20	47.625	11.75	-	-
Main Breaker Modules		TMP35B4R	4	20	47.625	11.75	-	-
Main Breaker Modules		TMP5B6R	4	20	47.625	11.75	-	-
Main Breaker Modules		TMP35B6R	4	20	47.625	11.75	-	-
Main Breaker Modules		TMP5B8R	4	20	47.625	11.75	-	-
Main Breaker Modules		TMP35B8R	4	20	47.625	11.75	-	-
Main Breaker Modules		TMP5B10R	4	20	47.625	11.75	-	-
Main Breaker Modules		TMP35B10R	4	20	47.625	11.75	-	-
Main Breaker Modules		TMP5B12R	4	20	47.625	11.75	-	-
Main Breaker Modules		TMP35B12R	4	20	47.625	11.75	-	-
Main Breaker Modules		TMP5HB4R	4	20	47.625	11.75	-	-
Main Breaker Modules		TMP35HB4R	4	20	47.625	11.75	-	-
Main Breaker Modules		TMP5HB6R	4	20	47.625	11.75	-	-
Main Breaker Modules		TMP35HB6R	4	20	47.625	11.75	-	-
Main Switch Modules		TMPFT4R	4	20	47.625	11.75	-	-
Main Switch Modules		TMP3FT4R	4	20	47.625	11.75	-	-
Main Switch Modules		TMPFT6R	4	20	47.625	11.75	-	-
Main Switch Modules		TMP3FT6R	4	20	47.625	11.75	-	-
Main Switch Modules		TMPFT8R	4	20	47.625	11.75	-	-
Main Switch Modules		TMP3FT8R	4	20	47.625	11.75	-	-
Main Switch Modules		TMPFB4R	4	20	66.5	6.625	-	-
Main Switch Modules		TMP3FB4R	4	20	66.5	6.625	-	-
Main Switch Modules		TMPFB6R	4	20	66.5	6.625	-	-
Main Switch Modules		TMP3FB6R	4	20	66.5	6.625	-	-
Main Switch Modules		TMPFB8R	4	20	66.5	6.625	-	-
Main Switch Modules		TMP3FB8R	4	20	66.5	6.625	-	-
Main Switch Modules		TMPFB12R	10	36.5	66.5	19.5	-	-
Main Switch Modules		TMP3FB12R	10	36.5	66.5	19.5	-	-
Main Switch Modules		TMPFT12R	10	36.5	66.5	19.5	-	-
Main Switch Modules		TMP3FT12R	10	36.5	66.5	19.5	-	-
Main Switch Modules		TMPFB16R	10	36.5	66.5	19.5	-	-
Main Switch Modules		TMP3FB16R	10	36.5	66.5	19.5	-	-
Main Switch Modules		TMPFB20R	10	36.5	66.5	19.5	-	-
Main Switch Modules		TMP3FB20R	10	36.5	66.5	19.5	-	-
Main Switch Modules		TMPFB4RCLL	4	20	61	11.75	-	-
Main Switch Modules		TMP3FB4RCLL	4	20	61	11.75	-	-
Main Switch Modules		TMPFB8RCLL	4	20	61	11.75	-	-
Main Switch Modules		TMP3FB8RCLL	4	20	61	11.75	-	-
Main Switch Modules		TMPFB12RCLL	4	33.5	61	11.75	-	-
Main Switch Modules		TMP3FB12RCLL	4	33.5	61	11.75	-	-
Main Switch Modules		TMPFB16RCLL	4	25.38	61	11.75	-	-
Main Switch Modules		TMP3FB16RCLL	4	25.38	61	11.75	-	-
Main Switch Modules		TMPFB12RCLLT	4	33.5	61	11.875	-	-
Main Switch Modules		TMP3FB12RCLLT	4	33.5	61	11.875	-	-
Main Switch Modules		TMPFB12RT	4	33.5	52.625	11.875	-	-
Main Switch Modules		TMP3FB12RT	4	33.5	52.75	11.875	-	-
Main Lug Modules		TMP3L4R	5	13.5	48.75	7	-	-
Main Lug Modules		TMP3L6R	5	13.5	48.75	7	-	-
Main Lug Modules		TMP3L8R	4	20	47.625	11.75	-	-
Main Lug Modules		TMP3L8R	4	20	47.625	11.75	-	-
Main Lug Modules		TMP3L12R	4	20	47.625	11.75	-	-
Main Lug Modules		TMP3L12R	4	20	47.625	11.75	-	-
Main Lug Modules		TMP3L16R		32.875	60.125	11.4375	-	-
Main Lug Modules		TMP3L16R		32.875	60.125	11.4375	-	-
Main Lug with Feed Through		TMP3L12RCRIS		28.48	60.56	11.65	-	-
Main Lug with Feed Through		TMP3L16RCRIS		28.48	60.56	11.65	-	-
Main Pull Box Modules		TMPU4R	6	16.325	44.825	7.825	-	-
Main Pull Box Modules		TMP3U4R	6	16.325	44.825	7.825	-	-
Main Pull Box Modules		TMPU8R	7	24.325	46.825	11.825	-	-
Main Pull Box Modules		TMP3U8R	7	24.325	46.825	11.825	-	-
Main Pull Box Modules		TMPU12R	8	32.5	56.825	12	-	-
Main Pull Box Modules		TMP3U12R	8	32.5	56.825	12	-	-
Elbow		TMPE12	11	16	17.5	4.938	-	-
Elbow		TMPE12A	11	12	17.5	4.938	-	-

¹Figures referenced are on pages 2-29 and 2-30. Figures 1 through 8 have a removable top drip hood. Figure 4 has a removable top drip hood and open end wall..



Modular Metering Meter Mod III

Enclosure Knockout Dimensions

Knockouts

Symbol	•	A	B	C	D	E	F	G	H	I	J	K	L	M
Conduit Size in Inches	½	½	—	—	—	—	—	—	—	—	—	—	—	—
	¾	¾	—	—	—	—	—	—	—	—	—	—	—	—
	1	1	1	1	—	—	—	—	—	—	—	—	—	—
	1½	1½	1½	1½	1½	1½	—	—	—	—	—	—	—	—
	2	2	2	2	2	2	2	—	—	—	—	—	—	—
	2½	2½	2½	2½	2½	2½	2½	2½	—	—	—	—	—	—
	3	3	3	3	3	3	3	3	—	—	—	—	—	—
	3½	3½	3½	3½	3½	3½	3½	3½	—	—	—	—	—	—
	4	4	4	4	4	4	4	4	4	—	—	—	—	—
	5	5	5	5	5	5	5	5	5	5	—	—	—	—

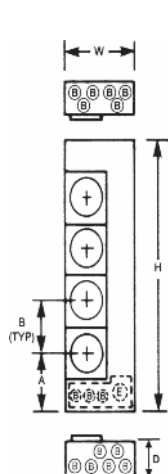


Figure 1

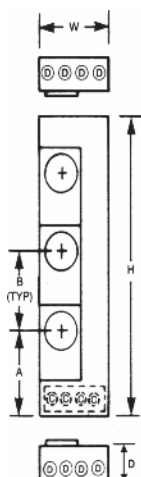


Figure 2

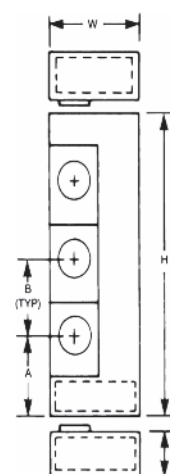


Figure 3

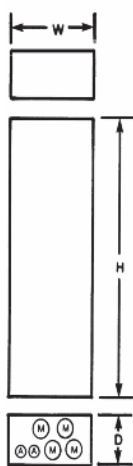


Figure 4

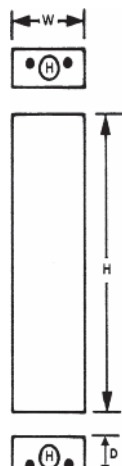


Figure 5

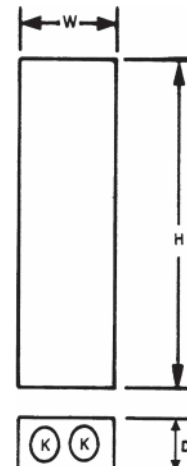


Figure 6



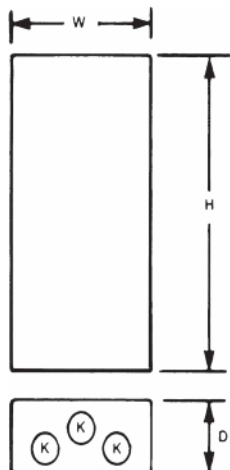


Figure 7

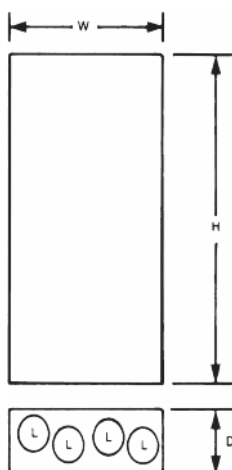


Figure 8

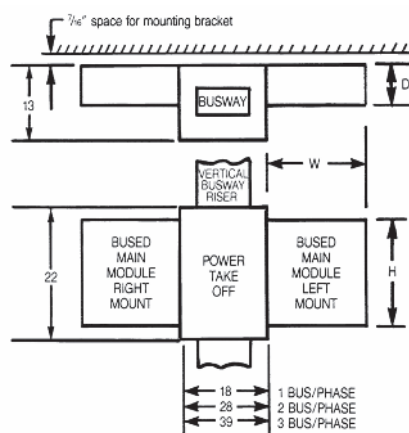


Figure 9

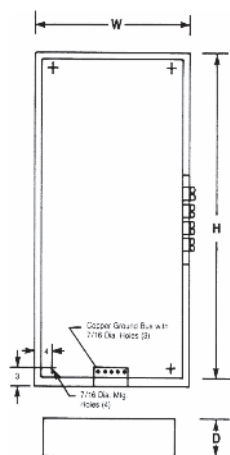


Figure 10

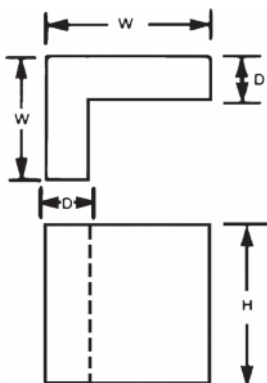


Figure 11

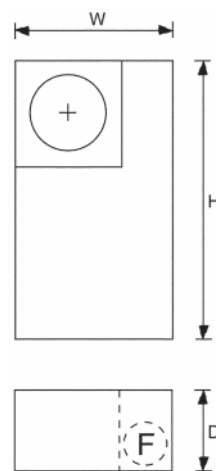


Figure 12