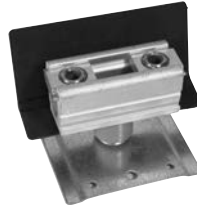


TRIPLEX GROUND



K1190
(For factory installed triplex ground add suffix "-TG" to the catalog number.)

ISOLATED NEUTRAL KIT



K1047

BYPASS LINK



K8180
(Bypass links are sold in pairs)

**MILBANK
2-POLE-200 AMP LARGE FRAME-10,000 & 22,000 AIC**

AMPS	10,000 AIC PLUG-IN	10,000 AIC PLUG-IN	22,000 AIC PLUG-IN	22,000 AIC PLUG-IN	10,000 AIC BOLT-IN	22,000 AIC BOLT-IN
100	UQFP-100	UQFP-M-100	UQFPH-100	UQFPH-M-100	UQFB-100	UQFBH-100
125	UQFP-125	UQFP-M-125	UQFPH-125	UQFPH-M-125	UQFB-125	UQFBH-125
150	UQFP-150	UQFP-M-150	UQFPH-150	UQFPH-M-150	UQFB-150	UQFBH-150
175	UQFP-175	UQFP-M-175	UQFPH-175	UQFPH-M-175	UQFB-175	UQFBH-175
200	UQFP-200	UQFP-M-200	UQFPH-200	UQFPH-M-200	UQFB-200	UQFBH-200



PLUG-IN BREAKER COMPATIBILITY CHART

AMPS	MILBANK	CUTLER-HAMMER (WESTINGHOUSE / BRYANT)	SIEMENS (ITE)	SIEMENS MURRAY / CROUSE-HINDS	G.E.	SQ-D
125-200	—	BR / BJ / HQP	—	MD	Q LINE	—
≤ 100	—	QUICKLAG P / BR / HQP	QP	MP	Q LINE	HOMELINE

BREAKER CHART

CATALOG NUMBER	AMPERAGE	NUMBER OF POLES
HQP2125	125	DOUBLE
WBJ2150	150	DOUBLE
WBJ2200	200	DOUBLE

SEALING RINGS



**SCREW TYPE
MR-4**

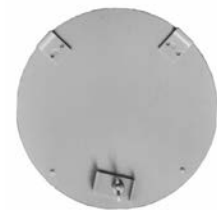


**BUCKLE HASP
MR-8**

CLOSING PLATES



METER CLOSING PLATE
(Gray Plastic)
6003



METAL CLOSING PLATE
(For ringless sockets)
CP-21

METER CLOSING PLATE
(Clear Plastic)
6116

