

# 4Q Straight Liquidtight Connectors

NEC/CEC — Suitable for use in the following Hazardous Locations:

- Class I, Division 2 per NEC 501.4(B)
- Class I, Zone 2 per NEC 505.15(C)(2)
- Class II, Division 1 per NEC 502.4(A)(1)(e)
- Class II, Division 2 per NEC 502.4(B)(2)

NEC/CEC — Suitable for use in the following Hazardous Locations:

- Class III, Division 1 per NEC 503.3(A)(2)
- Class III, Division 2 per NEC 503.3(B)
- Intrinsically Safe per NEC 504.20

## Applications

- To secure, ground and seal liquidtight flexible metal Conduit, Type LFMC, to boxes and enclosures..

## Features

- Tapered threaded male hub — NPT
- Compact, slim diameter with small turning radius
- Furnished with locknut and KO sealing ring.
- Liquidtight/Raintight/Oiltight/Concretetight
- UL Listed NEMA Type 4 when installed into a NPT threaded entry or UL Listed conduit hub (sizes 1-1/2" and larger require thread sealant).
- Suitable for grounding through 1-1/4" trade size per NEC Section 250.118(7)
- For trade sizes 1-1/4" and larger, an internal or external equipment bonding conductor is required. See 4Q-L Series with external ground lug.
- Bonding wedge locknuts are recommended in hazardous locations. See 101 Series.
- Suitable for wet locations
- Long ferrule prevents pullout and tight bend conduit "pop-out"
- Reusable ferrule
- Inspection windows in ferrule to ensure full engagement
- See our patented ferrule wrench which makes ferrule installation easy.

## Standard Materials

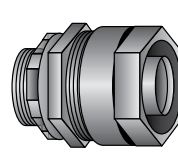
- Malleable iron body and nut
- Steel ferrule

## Standard Finishes

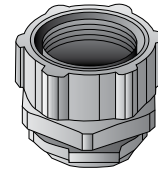
- Zinc electroplated

## Options

- Available hot dip/mechanically galvanized.

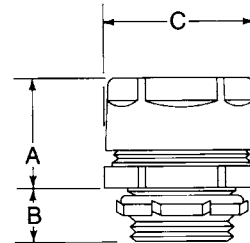


Type 4Q-38 — Type 4Q-200



Type 4Q-250 — Type 4Q-600

## Illustrated Dimensions



## NEC/CEC Certifications and Compliances

- UL Standard: ANSI/UL 514B
- UL Listed: 11853
- CSA Standard: C22.2 No. 18
- CSA Certified: 009795
- Fed Spec: W-F-406E
- NEMA Standard: FB-1

Trade Size (Inches)	Dimensions in Millimeters (Inches)			Catalog Number	Insulated Throat Catalog Number
	A	B	C		
3/8 (1/2 KO)	25.40 (1.00)	12.70 (0.50)	28.70 (1.13)	<b>4Q-38</b>	<b>4Q-38T</b>
1/2	25.40 (1.00)	12.70 (0.50)	31.75 (1.25)	<b>4Q-50</b>	<b>4Q-50T</b>
3/4	28.70 (1.13)	12.70 (0.50)	38.10 (1.50)	<b>4Q-75</b>	<b>4Q-75T</b>
1	31.75 (1.25)	16.00 (0.63)	44.45 (1.75)	<b>4Q-100</b>	<b>4Q-100T</b>
1-1/4	35.05 (1.38)	16.00 (0.63)	63.50 (2.50)	<b>4Q-125</b>	<b>4Q-125T</b>
1-1/2	35.05 (1.38)	16.00 (0.63)	69.85 (2.75)	<b>4Q-150</b>	<b>4Q-150T</b>
2	38.10 (1.50)	16.00 (0.63)	82.55 (3.25)	<b>4Q-200</b>	<b>4Q-200T</b>
2-1/2	50.80 (2.00)	25.40 (1.00)	104.90 (4.13)	<b>4Q-250</b>	<b>4Q-250T</b>
3	50.80 (2.00)	28.70 (1.13)	123.95 (4.88)	<b>4Q-300</b>	<b>4Q-300T</b>
3-1/2	57.15 (2.25)	31.75 (1.25)	123.95 (4.88)	<b>4Q-350</b>	<b>4Q-350T</b>
4	57.15 (2.25)	31.75 (1.25)	155.70 (6.13)	<b>4Q-400</b>	<b>4Q-400T</b>
5	60.45 (2.38)	28.70 (1.13)	187.45 (7.38)	<b>4Q-500</b> ①	<b>4Q-500T</b> ①
6	63.50 (2.50)	35.05 (1.38)	219.20 (8.63)	<b>4Q-600</b> ①②	<b>4Q-600T</b> ①②

① UL Listing not applicable.

② CSA Certification not applicable.

# 4Q 45° and 90° Liquidtight Connectors

**NEC/CEC — Suitable for use in the following Hazardous Locations:**  
Class I, Division 2 per NEC 501.4(B)  
Class I, Zone 2 per NEC 505.15(C)(2)  
Class II, Division 1 per NEC 502.4(A)(1)(e)  
Class II, Division 2 per NEC 502.4(B)(2)

**NEC/CEC — Suitable for use in the following Hazardous Locations:**  
Class III, Division 1 per NEC 503.3(A)(2)  
Class III, Division 2 per NEC 503.3(B)  
Intrinsically Safe per NEC 504.20

## Applications

- To secure, ground and seal Liquidtight Flexible Metal conduit, Type LFMC, to boxes and enclosures.

## Features

- Tapered threaded male hub — NPT.
- Compact, slim diameter with small turning radius.
- Furnished with locknut and KO sealing ring.
- Liquidtight/Raintight/Oiltight/Concretetight
- UL Listed NEMA Type 4 when installed into a NPT threaded entry or UL Listed conduit hub (sizes 1 1/4" and larger require thread sealant).
- Suitable for grounding through 1-1/4" trade size per NEC Section 250.118(7)
- For trade sizes 1-1/2" and larger, an internal or external equipment bonding conductor is required. See 4Q-L Series with external ground lug.
- Bonding Wedge Locknuts are recommended in Hazardous Locations. See 101 Series.
- Suitable for wet locations.
- Long ferrule prevents pullout and tight bend conduit "pop-out".
- Reusable ferrule.
- Inspection windows in ferrule to ensure full engagement.

## Standard Materials

- Malleable iron body and nut
- Steel ferrule

## Standard Finishes

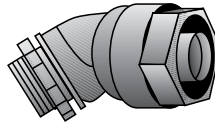
- Zinc electroplated

## Options

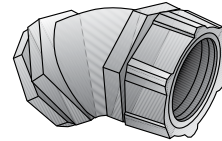
- Available hot dip/mechanically galvanized.

## NEC/CEC Certifications and Compliances

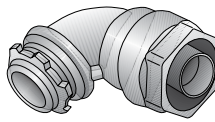
- UL Standard: ANSI/UL 514B
- UL Listed: 11853
- CSA Standard: C22.2 No. 18
- CSA Certified: 009795
- Fed Spec: W-F-406E
- NEMA Standard: FB-1



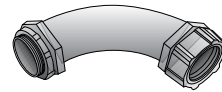
Type 4Q-438 — Type 4Q-4200



Type 4Q-4250 — Type 4Q-4500



Type 4Q-938 — Type 4Q-9200



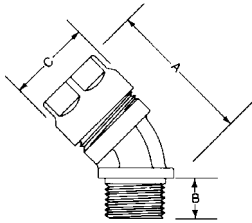
Type 4Q-9250 — Type 4Q-9500

# 4Q 45° and 90° Liquidtight Connectors

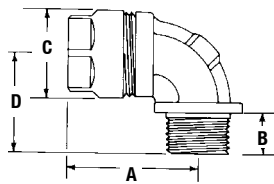
NEC/CEC — Suitable for use in the following Hazardous Locations:  
 Class I, Division 2 per NEC 501.4(B)  
 Class I, Zone 2 per NEC 505.15(C)(2)  
 Class II, Division 1 per NEC 502.4(A)(1)(e)  
 Class II, Division 2 per NEC 502.4(B)(2)

NEC/CEC — Suitable for use in the following Hazardous Locations:  
 Class III, Division 1 per NEC 503.3(A)(2)  
 Class III, Division 2 per NEC 503.3(B)  
 Intrinsically Safe per NEC 504.20

Trade Size (Inches)	Dimensions in Millimeters (Inches)			Catalog Number	Insulated Throat Catalog Number
	A	B	C Dia.		
3/8 (1/2 KO)	39.62 (1.56)	14.22 (0.56)	28.70 (1.13)	4Q-438	4Q-438T
1/2	39.62 (1.56)	14.22 (0.56)	31.75 (1.25)	4Q-450	4Q-450T
3/4	45.97 (1.81)	12.70 (0.50)	38.10 (1.50)	4Q-475	4Q-475T
1	50.80 (2.00)	12.70 (0.50)	44.45 (1.75)	4Q-4100	4Q-4100T
1-1/4	69.85 (2.75)	16.00 (0.63)	57.15 (2.25)	4Q-4125	4Q-4125T
1-1/2	73.15 (2.88)	16.00 (0.63)	66.80 (2.63)	4Q-4150	4Q-4150T
2	88.90 (3.50)	19.05 (0.75)	76.20 (3.00)	4Q-4200	4Q-4200T
2-1/2	190.50 (7.50)	25.40 (1.00)	104.90 (4.13)	4Q-4250	4Q-4250T
3	225.55 (8.88)	28.70 (1.13)	123.95 (4.88)	4Q-4300	4Q-4300T
4	289.05 (11.38)	28.70 (1.13)	155.70 (6.13)	4Q-4400	4Q-4400T
5	355.60 (14.00)	31.75 (1.25)	187.45 (7.38)	4Q-4500 <sup>①</sup>	4Q-4500T <sup>①</sup>



Trade Size (Inches)	Dimensions in Millimeters (Inches)				Catalog Number	Insulated Throat Catalog Number
	A	B	C	D		
3/8 (1/2 KO)	39.62 (1.56)	14.22 (0.56)	28.70 (1.13)	35.05 (1.38)	4Q-938	4Q-938T
1/2	39.62 (1.56)	14.22 (0.56)	31.75 (1.25)	35.05 (1.38)	4Q-950	4Q-950T
3/4	45.97 (1.81)	12.70 (0.50)	38.10 (1.50)	38.10 (1.50)	4Q-975	4Q-975T
1	50.80 (2.00)	12.70 (0.50)	44.45 (1.75)	41.40 (1.63)	4Q-9100	4Q-9100T
1-1/4	69.85 (2.75)	16.00 (0.63)	57.15 (2.25)	54.10 (2.13)	4Q-9125	4Q-9125T
1-1/2	73.15 (2.88)	16.00 (0.63)	66.80 (2.63)	57.15 (2.25)	4Q-9150	4Q-9150T
2	88.90 (3.50)	19.05 (0.75)	76.20 (3.00)	73.15 (2.88)	4Q-9200	4Q-9200T
2-1/2	190.50 (7.50)	25.40 (1.00)	104.90 (4.13)	181.10 (7.13)	4Q-9250	4Q-9250T
3	225.55 (8.88)	28.70 (1.13)	123.95 (4.88)	215.90 (8.50)	4Q-9300	4Q-9300T
4	289.05 (11.38)	28.70 (1.13)	155.70 (6.13)	279.40 (11.00)	4Q-9400	4Q-9400T
5	355.60 (14.00)	31.75 (1.25)	187.45 (7.38)	355.60 (14.00)	4Q-9500 <sup>①</sup>	4Q-9500T <sup>①</sup>



COMMERCIAL AND INDUSTRIAL FITTINGS: LIQUIDTIGHT CONDUIT FITTINGS

OSGEDNEY

<sup>①</sup> UL Listing not applicable.