

EMT Angle Compression Connectors

Type 8000W
 Type 3000W
 Gland Compression

Features:

- Concretetight
- Male hub threads NPS
- Available with insulated throat

Material/Finish:
 Malleable Iron/Zinc Plated

Third Party Certification:

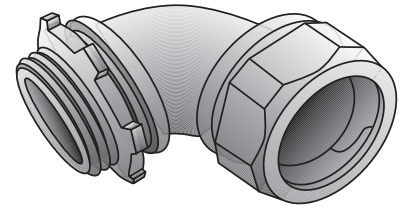
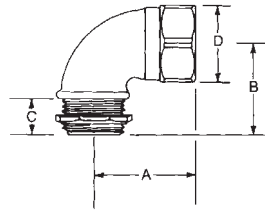


UL Listed: 14895

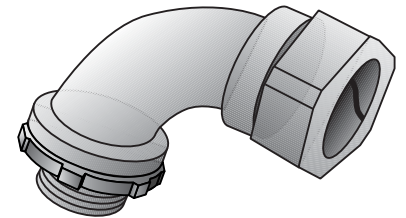
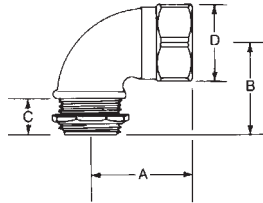


CSA Certified: 9795

Applicable Third Party Standards:
 UL Standard: 514B
 CSA Standard: C22.2 No. 18
 Federal Spec: W-F-408E



Type 8050W



Type 3050W

90° EMT SHORT ANGLE ELBOWS							
Trade Size (inches)	Catalog Number	Insulated Throat Catalog Number	Dimensions in Inches				Turning Radius
			A	B	C	D	
1/2	8050W	8050WT	1 1/4	1 1/8	1/2	1 1/8	5/8
3/4	8075W	8075WT	1 3/4	1 7/16	9/16	1 3/8	1 1/16
1	8100W		1 3/4	1 5/8	1/2	1 3/4	1 1/16
1 1/4	8125W		2 1/4	2 1/8	9/16	2 3/16	1 1/8
1 1/2	8150W		2 1/2	2 3/8	9/16	2 1/2	1 5/8
2	8200W		3 1/16	2 15/16	1 1/16	3 1/16	2 1/2

90° EMT LONG SWEEP ELBOWS						
Trade Size (inches)	Catalog Number	A	Dimensions in Inches			Wire Radius
			B	C	D	
1/2	3050W	2	1 15/16	1/2	1 1/8	1 1/4
3/4	3075W	2 7/16	2 7/16	5/8	1 3/8	1 7/16
1	3100W	2 5/8	2 9/16	1 1/16	1 3/4	1 7/8
1 1/4	3125W	3 1/16	3	1 11/16	2 3/16	2 1/4

EMT Angle Compression Connectors

Type 8E

Type OEG

Gland Compression

Features:

- Male hub threads NPS

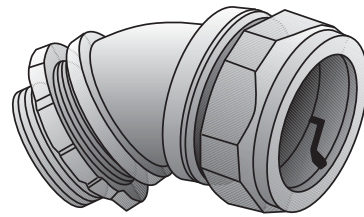
Material/Finish:

Malleable Iron/Zinc Plated

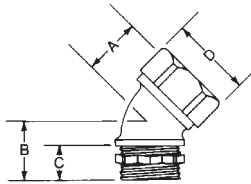
Note:

All furnished with locknuts.

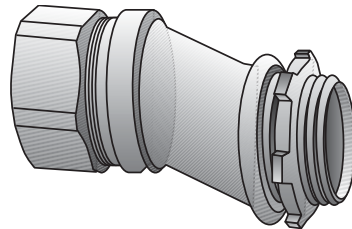
45° SHORT ANGLE ELBOWS					
Trade Size (inches)	Catalog Number	Dimensions in Inches			
		A	B	Offset C D	
1/2	8E-450	15/16	15/16	1/2	1 1/8
3/4	8E-475	13/16	1 1/4	9/16	1 3/8
1	8E-4100	7/8	1 7/16	5/8	1 3/4



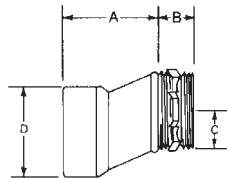
Type 8E



OFFSET CONNECTORS FOR EMT					
Trade Size (inches)	Catalog Number	Dimensions in Inches			
		A	B	Offset C D	
1/2	OEG-50	1 1/4	1/2	3/8	1 1/8
3/4	OEG-75	1 5/16	1/2	3/8	1 3/8
1	OEG-100	1 5/16	9/16	3/8	1 3/4



Type OEG




EMT Combination Couplings


Type 9000W

Use:
For compression EMT to flexible steel conduit

Material/Finish:
Malleable Iron/Zinc Plated

Third Party Certification:

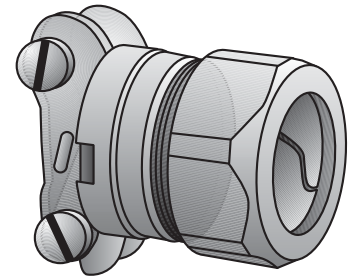
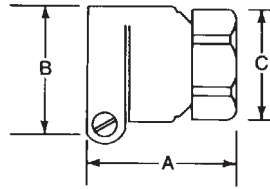
 UL Listed: E-11853

 CSA Certified: 9795

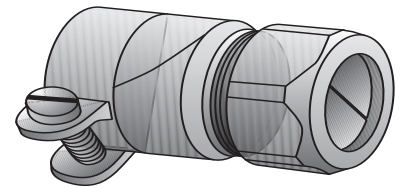
Applicable Third Party Standards:
UL Standard: 514B
CSA Standard: C22.2 No. 18
Federal Spec: W-F-406E
NEMA: FB-1

Trade Size (inches)	Catalog Number	Dimensions in Inches		
		A	B	C
1/2 3/8	9038-W*	1 3/16	1 7/16	1 1/8
1/2	9050-W	1 5/8	1 1/2	1 1/4
3/4	9075-W	1 15/16	1 3/4	1 1/2
1	9100-W	2	2 3/16	1 7/8
1 1/4	9125-W	2 3/16	2 7/16	2 1/4
1 1/2	9150-W	2 15/16	2 3/4	2 1/2
2	9200-W	3 1/4	3 1/2	3 1/16

* Not UL Listed



Type 9038-W



Type 9050-W — Type 9200-W

EMT Angle Set-Screw Connectors

Type 8000SS

90° Set-Screw EMT

Features:

- Male hub threads NPS
- Furnished with locknut
- Concretetight

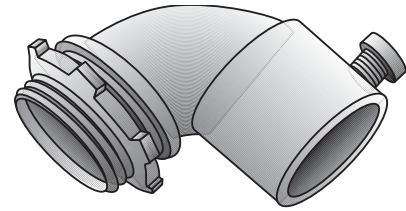
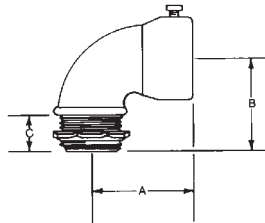
Material/Finish:

Malleable Iron/Zinc Plated

Applicable Third Party Standards:

Federal Spec: W-F-406E

Trade Size (inches)	Catalog Number	Dimensions in Inches		
		A	B	C
1/2	8050SS	1 1/8	1 1/8	1/2
3/4	8075SS	1 7/16	1 7/16	7/16
1	8100SS	1 5/8	1 5/8	7/16



Type 8000SS

Type OE

Set-Screw EMT 3/8" Offset

Features:

- Male hub threads NPS
- Furnished with locknut
- Concretetight

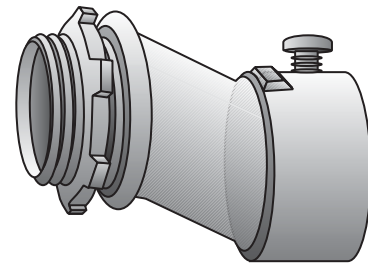
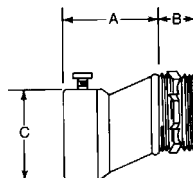
Material/Finish:

Malleable Iron/Zinc Plated

Applicable Third Party Standards:

Federal Spec: W-F-406E

Trade Size (inches)	Catalog Number	Dimensions in Inches		
		A	B	C
1/2	OE-50	1 11/16	1/2	5/8
3/4	OE-75	1 11/16	1/2	5/8
1	OE-100	1 3/4	9/16	11/16



Type OE