

**TYPE YGHA**  
HYLUG™ Terminals



Meets  
IEEE  
837 Requirements

Heavy duty HYLUG™ irreversible compression terminals designed not only to carry short circuit load but to also withstand high mechanical stress. Each conductor element has an inspection probe hole to ensure proper cable insertion. UL467 Listed. Acceptable for direct burial. UL486A Listed. Prefilled with PENETROX™ compound and strip sealed.

Catalog Number	Copper Conductor Size
YGHA2C-2N	2 str.
YGHA25-2N	1/0 str.
YGHA26-2N	2/0 str.
YGHA28-2N	4/0 str.
YGHA29-2N	250 kcmil
YGHA34-2N	500 kcmil



**TYPE YGHS**  
HYLINK™ Ground Splice



Meets  
IEEE  
837 Requirements

Heavy duty HYLINK™ ground splice designed not only to carry short circuit load but to also withstand high mechanical stress. Each conductor element has an inspection probe hole and a center stop to ensure proper cable insertion. UL467 Listed. Acceptable for direct burial in earth or concrete. UL486A Listed. Prefilled with PENETROX™ compound and strip sealed.

Catalog Number	Copper Conductor Size
YGHS2C	2 str.
YGHS25	1/0 str.
YGHS26	2/0 str.
YGHS28	4/0 str.
YGHS29	250 kcmil



**TYPE YGS**  
HYLINK™ Ground Splices



Irreversible compression HYLINK™ ground splices are specifically designed for ground applications. Each conductor element has an inspection probe hole and a center stop to ensure proper cable insertion. UL467 Listed. Acceptable for direct burial. UL486A Listed. Prefilled with PENETROX™ compound and strip sealed.

Catalog Number	Copper Conductor Size
YGS2C	2 str.
YGS25	1/0 str.
YGS26	2/0 str.
YGS28	4/0 str.
YGS29	250 kcmil
YGS34	500 kcmil



**TYPE YGA**  
HYLUG™ Terminals



Irreversible compression HYLUG™ ground terminal specifically designed for ground applications. Each connector has an inspection probe hole to ensure proper cable insertion. UL467 Listed. Acceptable for direct burial. UL486A Listed. Prefilled with PENETROX™ compound and strip sealed.

Catalog Number	Copper Conductor Size
YGA2C-2N	2 str.
YGA25-2N	1/0 str.
YGA26-2N	2/0 str.
YGA28-2N	4/0 str.
YGA29-2N	250 kcmil
YGA34-2N	500 kcmil

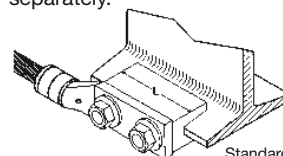


**TYPE YGIB**  
GROUNDLINK™ Connector

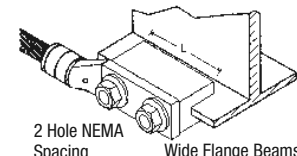


Meets  
IEEE  
837 Requirements

An irreversible compression ground connection which allows attachment to ground structural steel (standard [angled] or wide flange parallel) accomplished with a required 5-piece die set, Catalog PIBEAMKIT or UIBEAMKIT. Made of high conductivity wrought copper and comes prefilled with PENETROX™ compound and strip sealed. Order terminal mounting hardware separately.



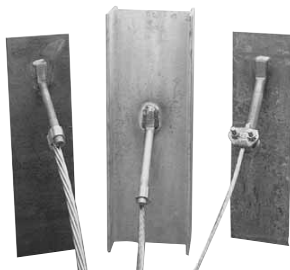
Standard Beams  
(Flange Angled)



2 Hole NEMA  
Spacing Wide Flange Beams  
(Flange Parallel)

Catalog Number	Copper Conductor Range	Length	Beam Flange Thickness
YGIBS28-338-2N	2 - 4/0 AWG 250 - 500 kcmil	3.00	.250" - .338"
YGIBW28-338-2N		3.00	
YGIBS34-338-2N		6.00	
YGIBW34-338-2N		6.00	
YGIBS28-400-2N	2 - 4/0 AWG 250 - 500 kcmil	3.00	.338" - .400"
YGIBW28-400-2N		3.00	
YGIBS34-400-2N		6.00	
YGIBW34-400-2N		6.00	
YGIBS28-462-2N	2 - 4/0 AWG 250 - 500 kcmil	3.00	.400" - .462"
YGIBW28-462-2		3.00	
YGIBS34-462-2N		6.00	
YGIBW34-462-2N		6.00	
YGIBS28-550-2N	2 - 4/0 AWG 250 - 500 kcmil	3.00	.462" - .550"
YGIBW28-502N		3.00	
YGIBS34-550-2N		6.00	
YGIBW34-550-2N		6.00	
YGIBS28-613-2N	2 - 4/0 AWG 250 - 500 kcmil	3.00	.550" - .613"
YGIBW28-613-2N		3.00	
YGIBS34-613-2N		6.00	
YGIBW34-613-2N		6.00	
YGIBS28-675-2N	2 - 4/0 AWG 250 - 500 kcmil	3.00	.613" - .695"
YGIBW28-675-2N		3.00	
YGIBS34-675-2N		6.00	
YGIBW34-675-2N		6.00	

**TYPE GSTUD-HY  
VERSITAIL™**



Meets  
IEEE  
837 Requirements

Catalog Number	Nom. Rod Size	Use with Compression Connector Catalog No. (Order Separately)	GSTUD-HY/YGHP Assembly Conductor Range
GSTUD14HY	1/4"	YGHP2C2	6 sol. - 2 str.
		YGHP29C2	1/0 str. - 250 kcmil
		YGHP34C2	250 - 500 kcmil
GSTUD38HY	3/8"	YGHP29C26	1/0 str. - 250 kcmil
		YGHP34C26	250 - 500 kcmil
GSTUD916HY	5/8"	YGHP29C29	3/0 str. - 250 kcmil
		YGHP34C29	250 - 500 kcmil
GSTUD34HY	3/4"	YGHP34C34	250 - 500 kcmil

**HYGROUND® Tool/Die Chart**

Catalog Number	Die Index	Y750/39/35	PAT750	Y46**	No. of Crimps
YGA25-2N	12	U25RT	U25RT	U25RT	2
YGA26-2N	13	U26RT	U26RT	U26RT	2
YGA28-2N	15	U28RT	U28RT	U28RT	2
YGA29-2N	16	U29RT	U29RT	U29RT	2
YGA2C-2N	10	U2CRT	U2CRT	U2CRT	2
YGA34-2N	20	U34RT	U34RT	U34RT	4
YGHA25-2N	14	U27RT	U27RT	U27RT	1
YGHA26-2N	15	U28RT	U28RT	U28RT	1
YGHA28-2N	17	U30RT	U30RT	U30RT	2
YGHA29-2N	18	U31RT	U31RT	U31RT	2
YGHA2C-2N	11	U1CRT-1	U1CRT-1	U1CRT-1	1
YGHA34-2N	22	U36RT	U36RT	U36RT	3
YGHC26C2	0	U-0	UOP	U-0	1
YGHC26C26	0	U-0	UOP	U-0	1
YGHC29C26	997	U997	U997P	U997	1
YGHC29C29	997	U997	U997P	U997	1
YGHC2C2	C	U-C	U-C	U-C	1
YGHC34C26	1011	U1011*	U1011*	P1011	2
YGHC34C29	1011	U1011*	U1011*	P1011	2
YGHC34C34	1011	U1011*	U1011*	P1011	3
YGHP29C2	997	U997	U997P	U997	1
YGHP29C26	997	U997	U997P	U997	1
YGHP29C29	997	U997	U997P	U997	1
YGHP29C6W6W	997	U997	U997P	U997	1
YGHP2C2	0	U0	UOP	U0	1
YGHP2C6W6W	0	U0	UOP	U0	1
YGHP34C2	998	U998*	U998P	PU998	1
YGHP34C26	998	U998*	U998P	PU998	1
YGHP34C29	998	U998*	U998P	PU998	1
YGHP34C34	1011	U1011*	U1011*	P1011	3
YGHP58C2W2	997	U997	U997P	U997	1
YGHR26C100	1011	U1011*	U1011*	P1011	2
YGHR26C12	998	PU998	PU998P	P1011	2
YGHR26C34	998	PU998	PU998P	P1011	2
YGHR26C58	998	PU998	PU998P	P1011	2
YGHR29C100	1011	U1011*	U1101*	P1011	2
YGHR29C12	998	PU998	PU998P	P1011	2
YGHR29C34	998	PU998	PU998P	P1011	2
YGHR29C58	998	PU998	PU998P	P1011	2

\* Indicates that connector can only be installed with Y750 or Y46. Cannot be installed with Y35 or Y39.  
\*\* Where a U-die is recommended with the Y46, a PUADP-1 adaptor must be used.

(HYGROUND® Tool/Die Chart continued on next page)

**HYGROUND® Tool/Die Chart**

(Continued)

Catalog Number	Die Index	Y750/39/35	PAT750	Y46**	No. of Crimps
YGHR34C100	1011	U1011*	U1011*	P1011	2
YGHR34C34	1011	U1011*	U1011*	P1011	2
YGHR34C58	998	PU998	PU998P	P1011	2
YGHS25	14	U27RT	U27RT	U27RT	1
YGHS26	15	U28RT	U28RT	U28RT	1
YGHS28	17	U30RT	U30RT	U30RT	2
YGHS29	18	U31RT	U31RT	U31RT	2
YGHS2C	11	U1CRT-1	U1CRT-1	U1CRT-1	1
YGHS34	22	U36RT	U36RT	U36RT	3
YGIB (All)	1105	UIBEAMKIT	UIBEAMKIT	PIBEAMKIT	varies
YGL29C2	997/0	U997/U-0	U997P/UOP	U997/U-0	1
YGL29C29	997	U997	U997P	U997	1
YGL2C2	0	U-0	UOP	U-0	1
YGL34C2	998/0	U998/U-0*	U998P/UOP	PU998/U-C	1
YGL34C29	998/0	U998/U-0*	U998P/UOP	PU998/U-C	1
YGL34C34	1011	U1011*	U1011*	P1011	3
YGLR29C100	997/1011	U997/U1011	U997P/U1011	U997/U1011	2
YGLR29C12	997	U997	U997P	U997	1
YGLR29C34	997/1011	U997/U1011*	U997P/U1011	PU998	1
YGLR29C58	997/998	U997/U1011*	U997P/U1011	PU998	1
YGLR34C100	997/1011	U997/U1011	U997P/U1011	U997/U1011	2
YGLR34C12	1011/998	U1011*	U1011*	PU998	1
YGLR34C34	1011	U1011*	U1011*	U1011	2
YGLR34C58	998/1011	U998/U1011*	U998P/U1011	PU998	1
YGS25	12	U25RT	U25RT	U25RT	2
YGS26	13	U26RT	U26RT	U26RT	2
YGS28	15	U28RT	U28RT	U28RT	2
YGS29	16	U29RT	U29RT	U29RT	2
YGS2C	10	U2CRT	U2CRT	U2CRT	2
YGS34	20	U34RT	U34RT	U34RT	4

\* Indicates that connector can only be installed with Y750 or Y46. Cannot be installed with Y35 or Y39.  
\*\* Where a U-die is recommended with the Y46, a PUADP-1 adaptor must be used.

**TYPE YSM**

**HYLINK™ Splice**

Uninsulated Parallel Splice



HYLINK™ type YSM seamless parallel splice connector permits wires to be laid parallel inside the connector and spliced together with BURNDY's compression HYTOOL™. Each YSM connector accommodates a wide combination of round, square, and rectangular copper conductors that have a total combined circular mil area listed in the table below. The conductors to be spliced must physically fit within the splice without being forced.

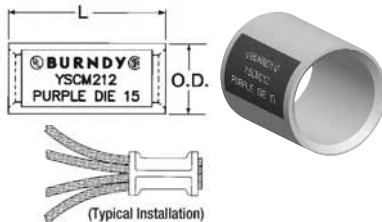
Catalog Number	Circular Mil. Range		Wire Strip Length
	Min.	Max.	
YSM18	300	1,909	5/16"
YSM14	477	4,107	5/16"
YSM10	4,107	10,380	7/16"
YSM8C	6,088	16,864	1/2"
YSM6C	10,380	26,83	1/2"
YSM4C	26,813	42,613	9/16"
YSM2C	42,613	66,832	11/16"
YSM1C	66,832	81,807	11/16"
YSM25	81,807	104,110	3/4"
YSM26	104,110	133,650	7/8"
YSM27	133,650	167,332	7/8"
YSM28	167,332	211,954	15/16"

**TYPE YSCM**

**HYLINK™ Splice**

Color-Coded

Uninsulated Parallel Splice



Type YSCM HYLINK™ seamless parallel splice connectors permit stranded wires to be laid parallel inside the connector and spliced together with BURNDY® compression tools. Each YSCM connector accommodates a wide range of conductors and is color-coded to ensure proper tool and die match. YSCM connectors are UL486A Listed for applications up to 600V and CSA Certified.

Catalog Number	Conductor Range Cable		Dimensions Inch		Color Code	Die Index	Recommended Installation Tooling*			Wire Strip Length
	Min.	Max.	L ±.03	O.D. ±.01			OUR840, Y500CTHS, PAT600 Series	Y35, Y750, PAT750 Series	Wire Strip Length	
YSCM17	13,060	16,910	.50	.27	Red	49	X8CRT, W8CRT	U8CRT	11/16"	
YSCM27	16,910	26,890	.50	.31	Blue	7	X5CRT, W5CRT	U5CRT	11/16"	
YSCM42	29,970	41,520	.50	.38	Gray	8	X4CRT, W4CRT	U4CRT	11/16"	
YSCM66	42,750	66,040	.62	.47	Brown	10	X2CRT, W2CRT	U2CRT	3/4"	
YSCM80	67,980	80,020	.62	.52	Green	11	X1CRT, W1CRT	U1CRT-1	3/4"	
YSCM104	82,870	103,630	.69	.57	Pink	12	X25RT, W25RT	U25RT	15/16"	
YSCM133	104,960	133,220	.81	.64	Black	13	X26RT, W26RT	U26RT	1-1/16"	
YSCM167	134,340	166,560	.81	.70	Orange	14	X27RT, W27RT	U27RT	1-1/16"	
YSCM212	167,380	211,820	.88	.78	Purple	15	X28RT, W28RT	U28RT	1-1/16"	
YSCM231	—	230,800	1.05	.81	Yellow	16	X29RT, W29RT	U29RT	1-1/16"	

\* Recommended strip length. Strip length dependant on size, number of wires and insulation thickness.  
 \*\* Refer to Circular Mil Table per ASTM B8 for total Class B Circular Mil calculations.

**TYPE YA-L**

**One Hole HYLUG™**

Standard Barrel Lugs for Copper Cable

UL Listed 90° C

600 Volts to 35 kV ♦



Copper compression terminals for regular-duty applications. Inspection hole ensures proper insertion of cable. Tin-plated. Marked with die index and color code.

Catalog Number	Conductor		Navy	Stud Hole Size	Tongue Width	Figure Dimensions		
	AWG	*** mm²				(B)	(T)	(L)
YA8CL-BOX	37/24 8 Weld	† 10	23	8 - 10	.41	.44	.08	1.16
YA8C-L1-BOX	8 AWG 6 Sol.		23	1/4	.44	.44	.08	1.26
YA6CL-BOX	6 AWG	—	—	1/4	.45	.54	.08	1.18
YA5CL-BOX	5 AWG	—	30	1/4	.44	.81	.07	1.65
YA4CL-BOX	4 AWG	—	40	1/4	.50	.81	.09	1.74
YA4CL6-BOX	4 AWG	—	40	1/2	.71	.81	.06	2.20
YA3CL	3 Str./2 Sol.	25	50	5/16	.55	.88	.09	1.88
YA2CL-BOX	2 AWG	35	60	5/16	.61	.88	.11	1.93
YA2CL6-BOX	2 AWG	35	60	1/2	.73	.88	.09	2.32
YA1CL-BOX	1 AWG	50	75	5/16	.68	.88	.01	1.94
YA1CL6-BOX	1 AWG	50	75	1/2	.73	.88	.09	2.37
YA25L6-BOX	1/0 AWG	—	100	1/2	.75	.88	.12	2.34
YA26L-BOX	2/0 AWG	70	125	3/8	.83	.94	.12	2.19
YA26L6-BOX	2/0 AWG	70	125	1/2	.83	.94	.12	2.44
YA27L-BOX	3/0 AWG	—	150	1/2	.91	1.00	.13	2.54
YA28L-BOX	4/0 AWG	—	200	1/2	1.02	.88	.14	2.46
YA29L-BOX	250 kcmil	—	250	1/2	1.11	1.06	.14	2.67
YA30L	300 kcmil	150	300	1/2	1.20	1.03	.16	2.69
YA31L	350 kcmil	185	350	1/2	1.29	1.06	.18	2.75
YA32L	400 kcmil	—	400	5/8	1.38	1.19	.19	3.18
YA34L	500 kcmil	240	—	5/8	1.55	1.27	.20	3.37
YA36L	600 kcmil	300	—	5/8	1.74	1.38	.27	3.72
YA38L	700 kcmil	—	—	5/8	1.84	1.45	.27	3.66
YA39L	750 kcmil	—	—	5/8	1.91	1.42	.27	3.67
YA40L	800 kcmil	400	—	5/8	1.98	1.42	.30	3.81
YA44L	1000 kcmil	500	—	5/8	2.19	1.65	.33	4.04

\*\*\* The mm² conductor sizes listed are the recommendations for Class 2 conductor.  
 † The mm² conductor size listed is for both Class 2 and Class 5 conductor.  
 For applications greater than 2000 Volts, consult cable manufacturer for voltage stress relief instructions.

Note: All dimensions shown are for reference only.

Catalog Number	Dieless (# of crimps)	▲ Installation Tooling				Color Code	Die Index	Wire Strip Length
		Mechanical		Hydraulic				
		MD6, OUR840, MD7-34R	Y500CTHS	Y35, Y39, Y750, Y46*, PAT750				
YA8CL-BOX	Y1MRTC (1) Y8MRB-(1) MY29-11 (1) Y81KFT (1)	W8CVT (1) W8CRT (1) X8CRT (1)	W8CVT (1) W8CRT (1) X8CRT (1)	U8CRT (1)	Red	49	7/16"	
YA8C-L1-BOX	Y81KFTMBH (1) PAT81KFT-18V (1)							
YA6CL-BOX	Y1MRTC (1) MY29-3 (1) MY29-11 (1) MRC840 (1) Y81KFT (1) Y81KFTMBH (1) PAT81KFT-18V (1)	W5CVT (1) W5CRT (1) X5CRT (1) X8CART (1)	W5CVT (1) W5CRT (1) X5CRT (1) X8CART (1)	U5CRT (1)	Blue	7	7/8"	

(One Hole HYLUG™ Standard Barrel Installation Tooling Chart continued on next page)

45° and 90° lugs are available. For more information, please contact Customer Service: 1-800-346-4175.

**TYPE YA-L**

**One Hole HYLUG™**

**Installation Tooling Chart (Continued)**



▲ Installation Tooling							
Catalog Number	Dieless (# of crimps)	Mechanical	Hydraulic		Color Code	Die Index	Wire Strip Length
		MD6, OUR840, MD7-34R	Y500CTHS	Y35, Y39, Y750, Y46*, PAT750			
<b>YA5CL-BOX</b>	Y1MRTC (1) MY29-3 (1) MY29-11 (1) MRC840 (1) Y81KFT (1) Y81KFTMBH (1) PAT81KFT-18V (1)	W5CRT (1) W5CVT (1) X5CRT (1)	W5CRT (1) X5CRT (1) W5CVT (1)	U5CRT (1)	Blue	7	7/8"
<b>YA4CL-BOX</b>	Y1MRTC (2) MY29-3 (1) MY29-11 (1) MRC840 (1) Y644HSXT (1) Y81KFT (1) Y81KFTMBH (1) PAT81KFT-18V (1)	W4CVT (1) W4CRT (1) X4CRT (1)	W4CVT (1) W4CRT (1) X4CRT (1)	U4CRT (1) U6CABT (1)	Gray	8	7/8"
<b>YA4CL6-BOX</b>	Y1MRTC (2) MY29-3 (1) MY29-11 (1) MRC840 (1) Y644HSXT (1) Y81KFT (1) Y81KFTMBH (1) PAT81KFT-18V (1)	W3CRT (1)	W3CRT (1)	U3CRT (1)	White	9	15/16"
<b>YA3CL</b>	Y1MRTC (2) MY29-3 (1) MY29-11 (1) MRC840 (1) Y644HSXT (1) Y81KFT (1) Y81KFTMBH (1) PAT81KFT-18V (1)	W2CVT (1) W2CRT (1) X2CRT (1)	W2CVT (1) W2CRT (1) X2CRT (1)	U2CRT (1)	Brown	10	15/16"
<b>YA2CL-BOX</b>	Y1MRTC (2) MY29-3 (1) MY29-11 (1) MRC840 (1) Y644HSXT (1) Y81KFT (1) Y81KFTMBH (1) PAT81KFT-18V (1)	W1CVT (1) W1CRT-1 (1) X1CRT-1 (1)	W1CVT (1) W1CRT-1 (1) X1CRT-1 (1)	U1CRT-1 (1) U4CABT (1)	Green	11	15/16"
<b>YA1CL-BOX</b>	Y1MRTC (2) MY29-3 (1) MY29-11 (1) MRC840 (1) Y644HSXT (1) Y81KFT (1) Y81KFTMBH (1) PAT81KFT-18V (1)	W25VT (2) W25RT (2) X25RT (2)	W25VT (2) W25RT (2) X25RT (2)	U25RT (1) U2CABT (1)	Pink	12	15/16"
<b>YA25L6-BOX</b>	MY29-3 (1) MY29-11 (1) MRC840 (2) Y644HSXT (1) Y81KFT (1) Y81KFTMBH (1) PAT81KFT-18V (1)	W26VT (2) W26RT (2) X26RT (2)	W26VT (2) W26RT (2) X26RT (2)	U26RT (1)	Black	13	1"
<b>YA26L-BOX</b>	MY29-3 (1) MY29-11 (1) MRC840 (2) Y644HSXT (1) Y81KFT (1) Y81KFTMBH (1) PAT81KFT-18V (1)						
<b>YA26L6-BOX</b>	Y81KFTMBH (1) PAT81KFT-18V (1)						

\* Use PUADP-1 adapter with "U" dies in Y46 HYPRESS™  
 \*\* P-RT die sets for use in Y46 HYPRESS™ only. PUADP-1 adapter not required.  
 ▲ See tooling section of this catalog for complete tool and die listings.

(One Hole HYLUG™ Standard Barrel Installation Tooling Chart continued on next page)

45° and 90° lugs are available. For more information, please contact Customer Service: 1-800-346-4175.

**TYPE YA-L**

**One Hole HYLUG™**

**Installation Tooling Chart (Continued)**



▲ Installation Tooling							
Catalog Number	Dieless (# of crimps)	Mechanical	Hydraulic		Color Code	Die Index	Wire Strip Length
		MD6, OUR840, MD7-34R	Y500CTHS	Y35, Y39, Y750, Y46*, PAT750			
<b>YA27L-BOX</b>	MY29-3 (1) MY29-11 (1) MRC840 (2) Y644HSXT (1) Y81KFT (2) Y81KFTMBH (2) PAT81KFT-18V (2)	W27VT (2) W27RT (2) X27RT (3)	W27VT (2) W27RT (2) X27RT (3)	U27RT (1)	Orange	14	1-1/16"
<b>YA28L-BOX</b>	MY29-3 (1) MY29-11 (1) MRC840 (2) Y644HSXT (1) Y81KFT (2) Y81KFTMBH (2) PAT81KFT-18V (2)	W28VT (2) W28RT (2) X28RT (2)	W28VT (2) W28RT (2) X28RT (3)	U28RT (1)	Purple	15	1-1/8"
<b>YA29L-BOX</b>	MY29-3 (1) MY29-11 (1) Y644HSXT (1) Y81KFT (2) Y81KFTMBH (2) PAT81KFT-18V (2)	W29VT (2) X29RT (4)	W29VT (2) W29RT (2) X29RT (4)	U29RT (1)	Yellow	16	1-1/8"
<b>YA30L</b>	Y644HSXT (1) Y81KFT (2) Y81KFTMBH (2) PAT81KFT-18V (2)	W30VT (2)	W30VT (2) W30RT (2)	U30RT (2) U28ART (2)	White	17	1-1/16"
<b>YA31L</b>	Y644HSXT (1) Y81KFT (2) Y81KFTMBH (2) PAT81KFT-18V (2)	W31VT (2)	W31VT (2) W31RT (2)	U31RT (2) U29RT (2)	Red	18	1-3/16"
<b>YA32L</b>	Y644HSXT (1) Y81KFT (2) Y81KFTMBH (2) PAT81KFT-18V (2)	W32VT (2)	W32VT (2) W32RT (2)	U32RT (2) U30ART (2)	Blue	19	1-1/4"
<b>YA34L</b>	Y644HSXT (1) Y81KFT (2) Y81KFTMBH (2) PAT81KFT-18V (2)	W34VT (2)	W34VT (2) W34RT (2)	U34RT (2) U31ART (2)	Brown	20	1-7/16"
<b>YA36L</b>	Y644HSXT (1) Y81KFT (2) Y81KFTMBH (2) PAT81KFT-18V (2)	—	—	U36RT (2)	Green	22	1-3/4"
<b>YA38L</b>	Y644HSXT (1) Y81KFT (3) Y81KFTMBH (3) PAT81KFT-18V (3)	—	—	U38RT (2)	Pink	400	1-15/16"
<b>YA39L</b>	Y644HSXT (1) Y81KFT (3) Y81KFTMBH (3) PAT81KFT-18V (3)	—	—	U39RT (2) P39RT (2) **	Black	24	1-15/16"
<b>YA40L</b>	Y644HSXT (1) Y81KFT (3) Y81KFTMBH (3) PAT81KFT-18V (3)	—	—	P40RT (3) **	Orange	25	1-15/16"
<b>YA44L</b>	Y644MBH (1) PAT644-18V (1) Y644HSXT (1) Y81KFT (3) Y81KFTMBH (3) PAT81KFT-18V (3)	—	—	P44RT (3) **	White	27	1-15/16"

\* Use PUADP-1 adapter with "U" dies in Y46 HYPRESS™  
 \*\* P-RT die sets for use in Y46 HYPRESS™ only. PUADP-1 adapter not required.  
 ▲ See tooling section of this catalog for complete tool and die listings.

**TYPES YA-2N, Y-2TC**

Two Hole HYLUG™

Code Conductor Long Barrel

UL Listed 90° C

600 Volts to 35 kV ♦



Catalog Number	Conductor			Stud Hole Size	Stud Hole Spacing	Tongue Width	Figure Dimensions		
	AWG	*** mm²	Navy				(B)	(T)	(L)
<b>YA8C2TC14</b>	8 Str. 6 Sol. 37/24	† 10	23	1/4"	5/8"	.400"	.81"	.08"	2.33"
<b>YA6C2N*</b>	6 AWG	—	—	1/2"	1-3/4"	.81"	1.12"	.12"	4.40"
<b>YA4C2N*</b>	4 AWG	—	40	1/2"	1-3/4"	.81"	1.12"	.12"	4.45"
<b>YA3C2N</b>	3 Str. 3 AWG 2 Sol.	25	50	1/2"	1-3/4"	.81"	1.25"	.12"	4.62"
<b>YA2C2N*</b>	2 AWG	35	60	1/2"	1-3/4"	.81"	1.25"	.12"	4.64"
<b>YA1C2N*</b>	1 AWG	50	75	1/2"	1-3/4"	.81"	1.38"	.12"	4.82"
<b>YA252N*</b>	1/0 AWG	—	100	1/2"	1-3/4"	.81"	1.38"	.11"	4.81"
<b>YA262N*</b>	2/0 AWG	70	125	1/2"	1-3/4"	.83"	1.50"	.12"	4.97"
<b>YA272N*</b>	3/0 AWG	—	150	1/2"	1-3/4"	.91"	1.50"	.13"	3.78"
<b>YA282N*</b>	4/0 AWG	—	200	1/2"	1-3/4"	1.02"	1.62"	.14"	5.17"
<b>YA292N*</b>	250 kcmil	—	250	1/2"	1-3/4"	1.11"	1.62"	.16"	5.21"
<b>YA302N*</b>	300 kcmil	150	300	1/2"	1-3/4"	1.20"	2.00"	.16"	5.64"
<b>YA312N*</b>	350 kcmil	185	350	1/2"	1-3/4"	1.29"	2.00"	.18"	5.68"
<b>YA322N*</b>	400 kcmil	—	400	1/2"	1-3/4"	1.38"	2.12"	.19"	5.85"
<b>YA342N*</b>	500 kcmil	240	—	1/2"	1-3/4"	1.55"	2.25"	.23"	6.06"

\*\*\* The mm² conductor sizes listed are the recommendations for Class 2 conductor.

† The mm² conductor size listed here is for Class 2 and Class 5 conductor.

\* Available undrilled. Add suffix "U" to catalog number (example: YA25U).

For applications greater than 2000 Volts consult cable manufacturer for voltage stress relief instructions.

Note: All dimensions shown are for reference only.

▲ Installation Tooling							
Catalog Number	Dieless (# of crimps)	Mechanical	Hydraulic		Color Code	Die Index	Wire Strip Length
		MD6, OUR840, MD7-34R	Y500C7HS	Y35, Y39, Y750, Y46*, PAT750			
<b>YA8C2TC14</b>	Y1MRTC (2) Y8MRB-1 (2) MY29-3 (2) MY29-11 (2) MRC840 (2) Y81KFT (1) Y81KFTMBH (1) PAT81KFT-18V (1)	W8CVT (2) W8CRT (2) X8CRT (2)	W8CVT (2) W8CRT (2) X8CRT (2)	U8CRT (1)	Red	49	1"
<b>YA6C2N</b>	Y1MRTC (2) MY29-3 (2) MY29-11 (2) MRC840 (2) Y81KFT (1) Y81KFTMBH (1) PAT81KFT-18V (1)	W5CVT (2) W5CRT (2) X5CRT (2) X8CART (2)	W5CVT (2) W5CRT (2) X5CRT (2) X8CART (2)	U5CRT (2) U8CART (2)	Blue	7	1-3/16"

▲ See tooling section of Master Catalog for complete tool and die listings.

\* Use PUADP-1 adaptor with "U" -dies in Y46 HYPRESS™.

(Two Hole HYLUG™ Long Barrel Installation Tooling Chart continued on next page)

45° and 90° lugs are available. For more information, please contact Customer Service: 1-800-346-4175.

**TYPES YA-2N, Y-2TC**

Two Hole HYLUG™

Installation Tooling Chart (Continued)



▲ Installation Tooling							
Catalog Number	Dieless (# of crimps)	Mechanical	Hydraulic		Color Code	Die Index	Wire Strip Length
		MD6, OUR840, MD7-34R	Y500C7HS	Y35, Y39, Y750, Y46*, PAT750			
<b>YA4C2N</b>	Y1MRTC (4) MY29-3 (2) MY29-11 (2) MRC840 (2)	W4CVT (2) W4CRT (2)	W4CVT (2) W4CRT (2)	U4CRT (2) U6CART (2)	Gray	8	1-3/16"
<b>YA3C2N</b>	Y644HSXT (1) Y81KFT (1) Y81KFTMBH (1) PAT81KFT-18V (1)	X4CRT (2) W3CRT (2)	X4CRT (2) W3CRT (2)	U3CRT (2)	White	9	1-5/16"
<b>YA2C2N</b>	Y1MRTC (4) MY29-3 (2) MY29-11 (2) MRC840 (2) Y644HSXT (1) Y81KFT (2) Y81KFTMBH (2) PAT81KFT-18V (2)	W2CVT (2) W2CRT (2) X2CRT (2)	W2CVT (2) W2CRT (2) X2CRT (2)	U2CRT (2)	Brown	10	1-5/16"
<b>YA1C2N</b>	Y1MRTC (4) MY29-3 (2) MY29-11 (2) MRC840 (2) Y644HSXT (1) Y81KFT (2) Y81KFTMBH (2) PAT81KFT-18V (2)	W1CVT (2) W1CRT-1 (2) X1CRT-1 (2)	W1CVT (2) W1CRT-1 (2) X1CRT-1 (2)	U1CRT-1 (2) U4CART (2)	Green	11	1-1/2"
<b>YA252N</b>	MY29-3 (2) MY29-11 (2) MRC840 (4) Y644HSXT (1)	W25VT (4) W25RT (4) X25RT (4)	W25VT (4) W25RT (4) X25RT (4)	U25RT (2) U2CART (2)	Pink	12	1-7/16"
<b>YA262N</b>	Y81KFT (2) Y81KFTMBH (2) PAT81KFT-18V (2)	W26VT (4) W26RT (4) X26RT (4)	W26VT (4) W26RT (4) X26RT (4)	U26RT (2)	Black	13	1-9/16"
<b>YA272N</b>	MY29-3 (2) MY29-11 (2) MRC840 (4) Y644HSXT (1) Y81KFT (2)	W26VT (4) W26RT (4) X26RT (4)	W26VT (4) W26RT (4) X26RT (4)	U26RT (2)	Black	13	1-9/16"
<b>YA282N</b>	Y81KFTMBH (2) PAT81KFT-18V (2)	W27VT (4) W27RT (4) X27RT (6)	W27VT (4) W27RT (4) X27RT (6)	U27RT (2)	Orange	14	1-9/16"
<b>YA292N</b>	MY29-3 (2) MY29-11 (2) Y644HSXT (1) Y81KFT (2) Y81KFTMBH (2) PAT81KFT-18V (2)	W28VT (4) W28RT (4) X28RT (6)	W28VT (4) W28RT (4) X28RT (6)	U28RT (2)	Purple	15	1-11/16"
<b>YA302N</b>	Y644HSXT (1) Y81KFT (3)	W30VT (4) W29RT (4) X29RT (8)	W29VT (4) W29RT (4) X29RT (8)	U29RT (2)	Yellow	16	1-11/16"
<b>YA312N</b>	Y81KFTMBH (3) PAT81KFT-18V (3)	W31VT (4)	W30VT (4) W30RT (4)	U30RT (4) U28ART (4)	White	17	2"
<b>YA322N</b>		W32VT (4)	W31VT (4) W31RT (4)	U31RT (4) U29ART (4)	Red	18	2-1/16"
<b>YA342N</b>	Y644HSXT (1) Y81KFT (4) Y81KFTMBH (4) PAT81KFT-18V (4)	W34VT (4)	W34VT (4) W34RT (4)	U34RT (4) U31ART (4)	Brown	20	2-1/2"

▲ See tooling section of Master Catalog for complete tool and die listings.

\* Use PUADP-1 adaptor with "U" -dies in Y46 HYPRESS™.

45° and 90° lugs are available. For more information, please contact Customer Service: 1-800-346-4175.

**TYPE HS-FR**

**Thin-Wall Heat Shrink  
Fire Retardant  
Heat Shrink Tubing**  
UL Recognized to 600 V



Type HS-FR is a flexible polyvinyl chloride thin-wall heat-shrink. Offering insulating, color identification and strain relieving properties for terminations and splices. The 2:1 shrink ratio allows for faster shrink recovery, covering wire sizes: 16 AWG to 1000 kcmil. UL Recognized, 105° C, 600 V, operating temperatures from -20° C to 105° C with a shrink temperature of 135° C.

How to Order: **B** = Black, **G** = Green, **W** = White, **BLU** = Blue, **R** = Red and **Y** = Yellow (example: HSB18FR).

Catalog Number	I.D. Expanded	I.D. After Recovery	Wall Thickness	Conductor Range		Standard Reel Size (Feet)
				Code	Flex	
HS_18FR	.125	.062	.025	16 - 14	16 - 14	50
HS_18FR250						250
HS_14FR	.25	.125		8 - 12	10 - 12	50
HS_14FR250						250
HS_38FR	.375	.187		6 - 4	8 - 6	50
HS_38FR250						250
HS_12FR	.500	.250		4 - 1	6 - 4	50
HS_12FR250						250
HS_34FR	.750	.375		1/0 - 3/0	2 - 1/0	50
HS_34FR250						250
HS_100FR	1.00	.500	.035	4/0 - 3/0	1/0 - 3/0	25
HS_100FR100						100
HS_112FR	1.50	.750	.040	350 - 750	250 - 500	25
HS_112FR100						100
HS_200FR	2.00	.045	800 - 1000	500 - 750	25	
HS_200FR100					100	

Shrink temperature is 135°C (275°F). For best results, move heat gun along the length of heat shrink to avoid concentrations. To extend useful life, store material below 70°F. For additional Heat Shrinkable Tubing see "URD" section Type RYAC and RK169-2, RK170-2 in this section.

**TYPE HSC-FR**

**VISI-SHRINK™  
Fire Retardant  
Clear Heat Shrink Tubing**  
UL Listed to 600 V



Type HSC-FR is a flexible polyvinyl chloride clear heat shrink tubing. Excellent flame retardant properties and a 2:1 shrink ratio, the VISI-SHRINK™ tubing enables inspectors to read die index embossments on installed connectors easily. UL Recognized, 105°C, 600V, the operating temperature ranges from -20° C to 105° C with a shrink temperature of 170° C.

Catalog Number	I.D. Expanded	I.D. After Recovery	Wall Thickness	Conductor Range		Standard Reel Size (Feet)
				Code	Flex	
HSC18FR	.125	.062	.025	14 - 16	14 - 16	500
HSC14FR	.25	.125	.025	8 - 12	10 - 12	250
HSC38FR	.375	.187	.025	4 - 6	8	
HSC12FR	.50	.250	.025	1 - 2	4 - 6	150
HSC34FR	.75	.375	.030	3/0-1/0	1 - 2	
HSC100FR	1.00	.50	.035	300 - 4/0	4/0 - 1/0	100
HSC112FR	1.50	.75	.040	750 - 400	500 - 250	
HSC200FR	2.00	1.00	.045	1000 - 800	750 - 500	

**TYPE HS-H-PF**

**Heavy Wall Heat Shrink Tubing**  
Cross-linked Polyolefin  
Cut Lengths and 4 Foot Sticks



Meets MIL-I-23053/5 1000 Volts

Type HS-H-PF is a heavy wall, flame retardant heat shrink tubing made of cross-linked polyolefin. The shrink ratio is 3:1, and the inside diameter is coated with an adhesive sealant to protect against moisture and corrosion. UL486D Listed for direct burial applications. Accommodates 14 AWG-500 kcmil conductors. Operating temperatures from -55° C to 135° C with a shrink temperature of 120° C.

Catalog Number	Length	Nom. Dia. In.	Min. Exp. I.D. In.	Max. Recov. I.D. In.	Nom. Wall Thickness In.	Conductor Range	No. of Pcs. Per Pkg.
HSB35H3PF25	3"	0.35	0.35	0.15	0.07	14 - 10	25
HSB35H6PF25	6"						5
HSB35H48PF5	4'						10
HSB34H6PF10	6"	0.75	0.75	0.22	0.09	6 - 2	10
HSB34H9PF10	9"						5
HSB34H48PF5	4'						5
HSB110H6PF5	6"	1.1	1.1	0.4	0.12	1 - 3/0	5
HSB110H9PF5	9"						5
HSB110H48PF5	4'						5
HSB150H9PF3	9"	1.5	1.5	0.5	0.16	2/0-350	3
HSB150H12PF3	12"						5
HSB150H48PF5	4'						5
HSB200H9PF2	9"	2	2	0.75	0.16	250 - 500	2
HSB200H12PF2	12"						2
HSB200H48PF2	4'						2

Available in Black only.

**TYPE HSIC-FR**

**Heavy Wall Heat Shrinkable End Cap**  
UL Listed to 600 V



Type HSIC-FR, **Heat Shrink Insulating End Cap Fire Retardant** is a heavy wall, fire retardant end cap made of cross-linked thermally stabilized black polyolefin. Used to insulate exposed conductors in energized applications. The 3:1 shrink ratio offers greater range, accommodating copper wire sizes, 8 AWG through 2500 + kcmil. Performs effectively over lead, aluminum, steel, polyethylene, EPR, and PVC jacketed materials. Blue thermal chromatic lines disappear indicating correct installation temperature and provides inspectability. I.D. adhesive provides superior moisture and weather resistant characteristics.

Catalog Number	600 V Cable Code	Flex	Internal Wall Diameter		Length Thickness Rec.		±20%	
			(Min.) Exp.	(Max.) Rec.	Exp.	±20%	Exp.	Rec.
HSIC8-1FR	8 - 1	8 - 4	.50	.16	.034	.080	3.0	2.50
HSIC4-40FR	4 - 4/0	4 - 2/0	.75	.24	.030	.080	3.0	2.50
HSIC10-500FR	1/0 - 500 kcmil	1 - 313.1 kcmil	1.10	.35	.039	.120	4.0	3.00
HSIC30-1000FR	3/0 - 1000 kcmil	2/0 - 646 kcmil	1.50	.47	.054	.160	4.5	3.25
HSIC200FR	300 - 1750 kcmil	250 - 1111 kcmil	2.00	.63	.050	.160	4.5	3.50
HSIC269FR	600 - 2500 kcmil	—	2.68	.87	.050	.160	5.0	4.00
HSIC350FR	1250 kcmil (min.)	—	3.50	1.18	.051	.160	5.0	4.50

**Y10-22****Plier Type HYTOOL™**

Combination Crimper, Cutter and Stripper

**Features and Benefits**

- Comfort grip handles fit hands comfortably making the tool easy to use.
- Crimps full range of insulated terminals and splices 22 - 10 AWG
- Crimps full range of uninsulated terminals and splices 22 - 10 AWG
- Full range insulation strippers for wire sizes 22 - 10 AWG
- Cut off dies for common size mild steel and non-ferrous screws
- 5-year limited warranty

**Specifications**

- Weight: 11 oz.
- Length: 8-5/8"
- Conductor Range: 22-10 AWG

**MR15, MR18, MR20****HYTOOL™**

Full Cycle Ratchet Hand Tools

**Features and Benefits**

- Heavy-duty forged steel frame
- Full cycle ratchet to assure properly crimped connectors and splices
- Comfort grip handles
- Compact, narrow nose to work in confined areas
- Easy groove identification with color coded dies
- Recommended terminals and splices are UL Listed
- 5-year limited warranty

**Specifications**

- Weight: 1.10 lbs.
- Length: 8.86"
- Width Open: 5.90"
- Width Closed: 2.50"
- Conductor Range: 22 - 10 AWG

**Y1MR-TC****HYTOOL™**

Full Cycle Ratchet Hand Tool

**Features and Benefits**

- Molded comfort grips reduce fatigue during continuous use
- Ratchet mechanism assures a complete crimp every time
- Emergency release mechanism allows tool to be opened in case of mistaken die choice or to reposition tool
- Rotating die is color coded to match color coding on connectors
- Die index embossment allows permanent inspectability of installed connectors to ensure consistently reliable and dependable connections
- 5-year limited warranty

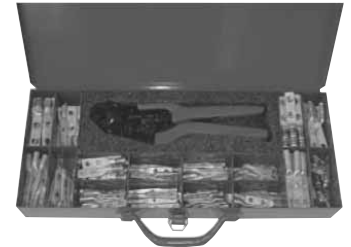
**Specifications**

- Weight: 13.5 oz.
- Length: 9-3/4"
- Width: .73"
- Conductor Range: 8-1 Code Conductor  
2 solid & 3 stranded  
8-2 Class 1 Flex  
Up to 6-6 (Brown)  
YC-L Type C-TAP

**Y1MRTCKIT**

Kit Contains:

- Y1MRTC Full-Cycle Ratchet Tool
- Sturdy Metal Carrying Case
- Terminals:
  - YA2C2TC38, YA2CL2TC14,
  - YA2CL2TC38, YA3C2TC38,
  - YA4CL2TC14, YA4CL2TC38,
  - YA6C2TC38, YA6CL2TC14,
  - YA6CL2TC14E1, YA6CL2TC14E2,
  - YA6CL2TC38, YA8CL2TC14,
  - YA8CL2TC38, YAV6CL2TC14E2FX,
  - YAV6CL2TC14
- Thin-Wall C-Taps: YC4L12

**OUR840****HYTOOL™**

Full Cycle Hand Held Ratchet Tool

**Features and Benefits**

- One hand, full cycle ratchet tool for Cu, Al, and ACSR
- Great for use in tight spaces where other tools can't fit
- 8 - 4/0 Al and 8 - 250 Cu terminals and splices on code conductor
- W28K cutter die permits use of tool as a cable cutter
- Uses reduced handle force on "X" dies and select "W" dies
- Proper crimps are assured with full cycle ratchet mechanism
- UL Listed connections when color coded dies are used to install recommended BURNDY® terminals and splices
- 5-year limited warranty

**Specifications**

- Weight: 2 lbs. 14 oz.
- Length: 13"
- Max. Crimp Force: 8,000 lbs.
- Max. Handle Force: 8 lbs. approx.
- Conductor Range: 8 - 4/0 AWG Al  
8 - 250 kcmil Cu

