



## Adjustable Throat Liners

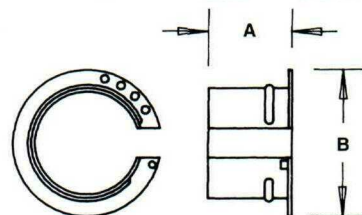
To be installed in fittings after conduit, fitting and wire are in place. Allows installation to meet local electrical code. Polypropylene.



CATALOG NUMBER	UPC/DCI/NAED MFG #01 8997	TRADE SIZE	UNIT STD	STD PKG	DIM A	DIM B
4001	04001	1/2	25	100	.670	.900
4002	04002	3/4	25	100	.710	1.220
4003	04003	1	25	100	.880	1.450
4004	04004	1-1/4	10	40	1.015	1.735
4005	04005	1-1/2	10	40	1.015	2.050
4006	04006	2	10	40	1.250	2.312



E60812 LR49636

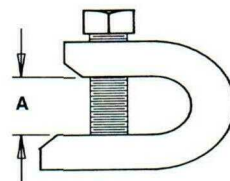


## Beam Clamps

Plated steel.



CATALOG NUMBER	UPC/DCI/NAED MFG #01 8997	STATIC LOAD RATING	TRADE SIZE	UNIT PKG	STD PKG	DIM A	THREADED ROD SIZE
BC25	23250	75 IBS.	1	25	100	.608	1/4-20
BC38	23380	200 IBS.	2	25	100	.930	3/8-16



## Beam Clamps

Malleable iron. Plated.



CATALOG NUMBER	UPC/DCI/NAED MFG #01 8997	STATIC LOAD RATING	TRADE PKG	UNIT PKG	STD PKG	DIM A	THREADED ROD SIZE
MBC25	34810	125 IBS.	1	25	100	.772	1/4-20
MBC25A	42321	125 IBS.	1	25	100	.772	10-24
MBC26	42326	300 IBS.	1-1/2	50	50	.878	5/16-18
MBC27	42327	300 IBS.	2	50	50	.878	3/8-16
MBC28	42328	600 IBS.	2-1/2	25	25	1.108	1/2-13

