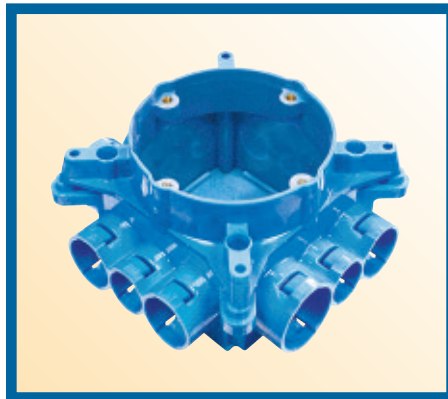


# **Carlton® Flex-Plus® Blue™ Electrical Nonmetallic Tubing (ENT) and Accessories**

**ENT Tubing**

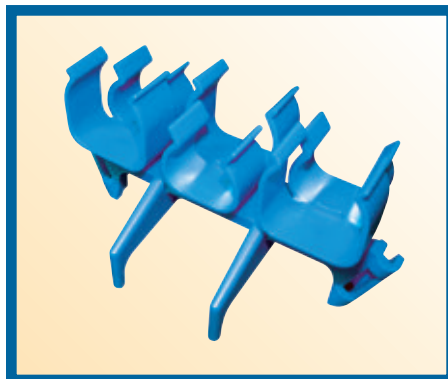


**Adapters  
& Couplings**

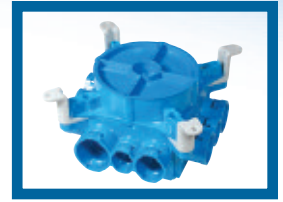
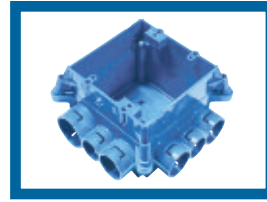
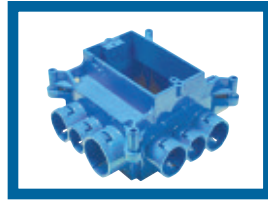
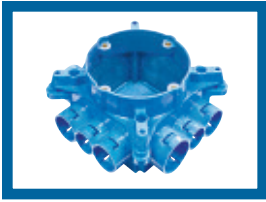


**Mud Box  
Assemblies**

**Stub Downs**



# Mud Box Assemblies



Carlson Mud Box Assemblies are available in five unique styles.

All Mud Box Assemblies are manufactured out of polycarbonate material to provide extra strength and durability, are concrete tight, and have twelve integral connectors: two-1", six 3/4" and four 1/2". Used with our ENT Reducers, this product will meet ANY jobsite application.

Part No.	Description	Specifications	Std. Ctn. Qty	Std. Ctn. Wt. lb
A863CFG	Mud Box with Ceiling Ring	Ceiling Ring	24	16.1
A863SG	Mud Box with One-Gang Ring	One Gang Ring	24	16.2
A863DG	Mud Box with Two-Gang Ring	Two Gang Ring	24	16.6
A863CFGF	Mud Box assembly with Mounting Feet	Ceiling Ring and Ground Lug	24	17.46
A863DGF	Mud Box assembly with Mounting Feet	Double Gang and Ground Lug	24	17.99
A863SGF	Mud Box assembly with Mounting Feet	Single Gang and Ground Lug	24	17.44

# Transition Adapters



Part No.	Description	Size (in.)	Std. Ctn. Qty	Std. Ctn. Wt. lb
A273DE	Reducer	3/4 to 1/2	100	3.2
A273EF	Reducer	1 to 3/4	100	2.4
A263D	Male ENT to Schedule 40 PVC Conduit	1/2 ENT to 1/2 Sch. 40	100	2.4
A263E	Male ENT to Schedule 40 PVC Conduit	3/4 ENT to 3/4 Sch. 40	100	3.2
A263F	Male ENT to Schedule 40 PVC Conduit	1 ENT to 1 Sch. 40	100	4.5
A245D	ENT to EMT	1/2 ENT to 1/2 EMT	100	3.4
A245E	ENT to EMT	3/4 ENT to 3/4 EMT	100	4.1
A245F	ENT to EMT	1 ENT to 1 EMT	100	5.4

# Flex-Plus® Blue™ ENT



LISTED  
E73317



LR83580  
FT-4 Rated  
where  
noted by



## Flex-Plus® Blue™ ENT

is a nonmetallic flexible raceway for use in walls, floors, and non-plenum ceilings. It's lightweight, hand bendable, and free from sharp edges, which reduces installation time and saves money.

- Ideal storage conditions down to -20°C

## Options:

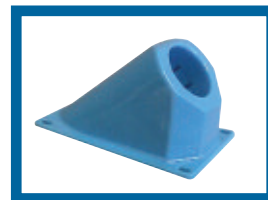
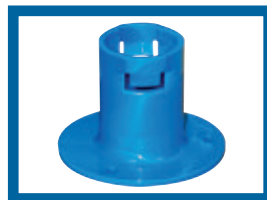
- Sizes 1/2" through 2"
- Colors can designate different voltages.

### Examples:


- Yellow color for communication circuits and signaling cable
- Red color for fire alarm circuits
- Blue color for power circuits
- Packaging: Coils or Reels (Wood)

Part No.	Size (in.)	Nom. I.D.	Nom. O.D.	Min. Bend Radius (in.)	Reel Size (F x W) (in.)	Packaging	Reel/Coil Length	Reel/Coil Wt (lb)	Wt. per 100 ft (lb)
1205AKD-001	1/2	0.56	0.84	6	36 x 24	R	1500	40	10
12005C-200	1/2	0.56	0.84	6	36 x 24	R	200	40	10
12005C-370	1/2	0.56	0.84	6	36 x 24	C	200	40	10
1207AAC-001	3/4	0.76	1.05	6	36 x 24	R	1000	40	14
12007C-100	3/4	0.76	1.05	6	36 x 24	R	100	40	14
12007C-240	3/4	0.76	1.05	6	36 x 24	C	100	40	14
12008C-750	1	1.00	1.315	6	36 x 24	R	750	40	20
12008C-160	1	1.00	1.315	6	36 x 24	C	100	40	22
12009C-500	1-1/4	1.402	1.66	7	48 x 32	R	500	90	19
12009C-750	1-1/4	1.402	1.66	7	48 x 32	R	750	90	19
12010C-750	1-1/2	1.554	1.90	8-1/4	48 x 32	R	750	90	39
12011C-225	2	2.030	2.375	9-1/2	48 x 32	R	225	90	32
12011C-500	2	2.030	2.375	9-1/2	48 x 32	R	500	90	32

## Stub Downs



Part No.	Description	Size (in.)	Std. Ctn. Qty	Std. Ctn. Wt. lb
A210D	Vertical Stub Down	1/2	50	3.8
A210E	Vertical Stub Down	3/4	50	3.7
A210F	Vertical Stub Down	1	50	4.8
A200D	Vertical Stub Down Transition Adapter	1/2 Female ENT to NPSC (Female)	50	2.3
A200E	Vertical Stub Down Transition Adapter	3/4 Female ENT to NPSC (Female)	50	2.8
A200F	Vertical Stub Down Transition Adapter	1 Female ENT to NPSC (Female)	50	3.9
A220D	45° Stub Down	1/2	25	1.8
A220E	45° Stub Down	3/4	25	2.0
A220F	45° Stub Down	1	25	2.6
A220G	45° Stub Down	1-1/4	25	2.8
A220H	45° Stub Down	1-1/2	25	3.3
A220J	45° Stub Down	2	25	4.1
A230D	90° Stub Down Transition Adapter	1/2 Female ENT to NPSC (Female)	25	2.0
A230E	90° Stub Down Transition Adapter	3/4 Female ENT to NPSC (Female)	25	2.4
A230F	90° Stub Down Transition Adapter	1 Female ENT to NPSC (Female)	25	3.3

Transition adapters are  LISTED E86720

# Quick Connect Adapters & Couplings



LR92248

- Carlon one piece ENT Quick Connect Couplings, Threaded Adapters and Snap-In Terminator Adapters are suitable for damp locations. Quick Connect Couplings and Threaded Adapters are concrete-tight when used with Carlon ENT.
- All sizes of rigid nonmetallic conduit fittings are compatible with ENT when using ENT cement.
- Rigid nonmetallic conduit fittings are recommended for use with Carlon 1-1/4 – 2” Flex-Plus® Blue™ ENT.
- Use of ENT Blue Quick-Set Cement is required.
- When One Piece Quick Connect Snap-In Terminator Adapters are installed in a concrete application, Carlon’s flat sealing washers must be used on the box connection ends.



Part No.	Description	Size (in.)	Std. Ctn. Qty	Std. Ctn. Wt. lb
A240D	Coupling	1/2	150	2.90
A240E	Coupling	3/4	100	3.22
A240F	Coupling	1	50	2.30
A243D	Threaded Adapter	1/2	150	2.55
A243E	Threaded Adapter	3/4	100	2.30
A243F	Threaded Adapter	1	50	2.00
A253D	Snap-In Adapter	1/2	150	2.70
A253E	Snap-In Adapter	3/4	100	2.90
A253F	Snap-In Adapter	1	50	2.30

#### Head Office

Thomas & Betts Limited  
700 Thomas Avenue  
Saint-Jean-sur-Richelieu, Quebec  
J2X 2M9

**Tel.:** (450) 347-5318

**Fax:** (450) 347-1976

#### Atlantic Region

Thomas & Betts Limited  
106 Chain Lake Drive, Unit 2C  
Halifax, Nova Scotia  
B3S 1A8

**Tel.:** (902) 450-1307

**Toll Free:** 1-877-862-4357

**Fax:** (902) 450-1309

#### Quebec Region

Thomas & Betts Limited  
7900 Taschereau Boulevard  
Building D, Suite 108  
Brossard, Quebec  
J4X 1C2

**Tel.:** (450) 466-1102

**Toll Free:** 1-800-465-1399

**Fax:** (450) 466-1163

#### Ontario Region

Thomas & Betts Limited  
2000 Argentia Road, Plaza 5  
Suite 500  
Mississauga, Ontario  
L5N 2R7

**Tel.:** (905) 858-1010

**Toll Free:** 1-877-291-7771

**Fax:** (905) 858-1080

#### Western Region

Thomas & Betts Limited  
6531 - 148<sup>th</sup> Street, #1  
Surrey, British Columbia  
V3S 3C5

**Tel.:** (604) 598-9811

**Toll Free:** 1-866-540-8220

**Fax:** (604) 598-9840

Thomas & Betts Limited  
4836 Eleniak Road  
Edmonton, Alberta  
T6B 2S1

**Tel.:** (780) 424-7092

**Toll Free:** 1-888-664-5666

**Fax:** (780) 424-7093

**Toll Free:** 1-866-424-4082