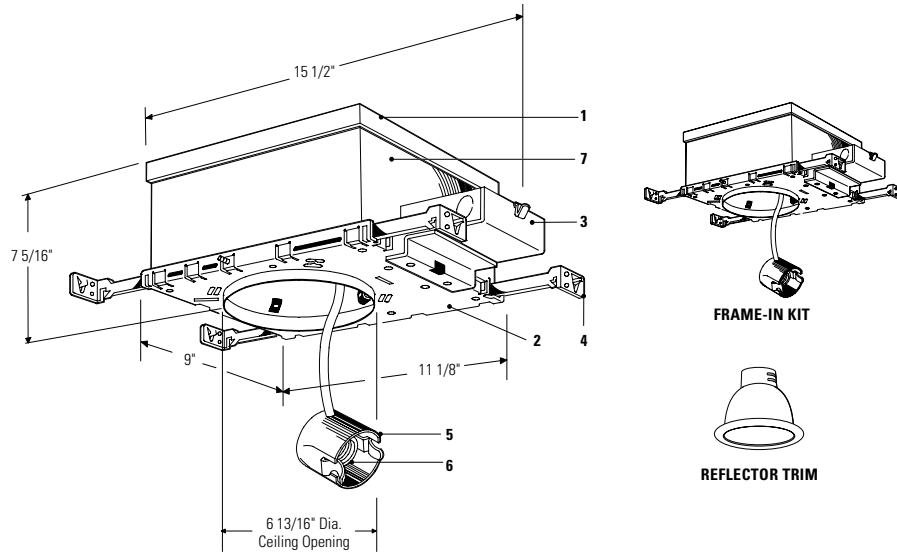


## Lytecaster Incandescent 6 3/4", Insulated Ceiling, AirSeal Frame-In Kit

Page 1 of 1

Project:	Catalog No:	Mfg:
Location:	Fixture Type:	Qty:
Notes:		Lamps:



Complete Fixture consists of Reflector Trim & Frame-In Kit. Select each separately.

Frame-In Kit	Reflector Trims — See Individual Reflector Trim Specification Sheets												
1100AICM	Open Downlight								Adjustable		Enclosed Diffusers	Open Wet Location	Wall Washer
	Reflector	Cone	Satin Cone	Sloped Ceiling		Baffles	Basic White	Cross Blade	Recessed Line Volt.	Eyeball			
	1143	1112	1108	1131	1154	1105	1170M1 1171	1132	1129NM	1122	1121	1184CD 1184WH	1185
	1144	1113	1108NM	1131WH	1154WH	1105WH			1129	1182	1124		
	1144CD	1113BK	1110	1131CL	1154BK	1105NM			1129CD	1122WH	1126		
		1113WH	1110NM	1131BK	1154CL	1105BNM			1129CDNM	1128			
		1113CD		1133	1154CD	1176		1129WH		1177SH			
		1113NM		1133WH		1176WH		1129CL		1178SH			
		1113BKNM		1133CL				1129GD		1190			
		1113CDNM		1133BK				1129BK					

## Features

- Housing:** 0.026" galvanized steel. UL listed for direct contact with thermal insulation. AirSeal® housing minimizes air leakage to less than 2 CFM at 1.57 PSF, which complies with Model Energy Code (Section 602.3.3) and the Washington State Energy Code (Section 502.4) and reduces heat loss and condensation in ceiling. Access door for inspection of junction box.
- Mounting Frame:** 0.036 (#20 ga.) galvanized steel. Accommodates all ceilings up to 1" thick. 3/8" deep integral lip. Four slots are positioned 90° apart to simplify alignment. Push-in/twist-out rotoclips hold reflector flush to ceiling.
- Junction Box:** 2" X 4" X 4": 0.063" (#14 ga.) galvanized steel. UL listed for maximum of 6 No. 12 ga., 90° C through branch circuit conductors. Quick release "L" shaped cover for outside access to wiring. Access door inside of housing allows easy inspection of wiring without removal of housing. Integral cable clamps permit attachment of nonmetallic Romex® or armored cable without the need for additional connectors.
- Mounting Bars:** 0.059" (#16 ga.) galvanized steel. 13" long bars extend to 27", rotatable and lockable, with integral T-bar tabs. Attach to wood joist or T-bar ceilings without need of accessories.
- Socket Housing:** Impact extruded aluminum or galvanized steel.

**6. Socket:** Porcelain medium base; nickel plated screw shell. Pre-wired with #18 ga. SF1 leads to junction box.

**7. Thermal Protector:** Meets NEC and UL requirements. Located inside housing.

## Options & Accessories

**Mounting Bars:** 1976 - 13" set of (4).

**Extra-Thick Ceiling Mounting Ring:** 1967A - up to 2" thick ceilings

## Labels

UL Type I.C. (Suitable for Damp Locations);

Complies with Air Leakage Requirements as stated in the Model Energy Code, California Title 24 and the Washington State Energy Code.