

NONMETALLIC SHEATHED CABLE CONNECTORS

THERMOPLASTIC CONNECTORS - THE INSIDER®

RACO COMMERCIAL FITTINGS

Application

- Use THE INSIDER® in dry locations to connect one or two runs of Nonmetallic Sheathed Cable (NMSC) to a box.
- THE INSIDER and NMSC can be used with steel boxes, panel boxes or plastic boxes with knockouts.



Nonmetallic Sheathed Cable Connector

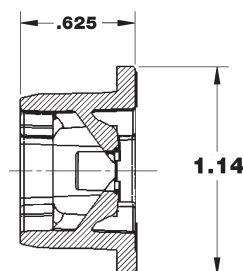
Product Features

- Installs from inside the box – The unique design allows the installer to run the NMSC through the knockout to the desired length before snapping the connector into the knockout. No need to cut an oversized hole for an old work box and connector installation
- The only NMSC Connector that is UL tested for use with an eccentric knockout.
- Accepts single and dual runs of NMSC and accomodates one of the widest ranges of NMSC combinations in the industry. No need to stock any other connector.
- Snap-in locking tab design secures THE INSIDER into the removed 1/2" knockout securely.
- One piece nonmetallic construction – resists corrosion and offers insulation protection. THE INSIDER is made of a tough engineered thermoplastic and can be used in exposed and concealed ceilings and walls.
- Can be easily removed by pushing one of the locking wing tabs with a screwdriver.

ORDERING INFORMATION - DIMENSIONS

THE INSIDER® FOR USE WITH NONMETALLIC SHEATHED CABLE

SINGLE	TWO CABLE COMBINATIONS	
14-2 w/grnd. 14-3 w/grnd.	(2) 14-2 w/grnd.	(1) 14-2 w/grnd. & (1) 12-2 w/grnd.
12-2 w/grnd. 12-3 w/grnd.	(2) 12-2 w/grnd.	(1) 12-2 w/grnd. & (1) 10-2 w/grnd.
10-2 w/grnd. 10-3 w/grnd.	(2) 10-2 w/grnd.	(1) 14-2 w/grnd. & (1) 10-2 w/grnd.



A = Overall length
B = Flange O.D.



Step 1: Easy Installation
Remove desired knockout. Insert THE INSIDER into the knockout from inside the box.



Step 2: Done



Easy Removal
Push the wing tab of the connector with a screwdriver. Push the connector through the knockout towards the inside of the box.



Large Cable
For two cable installations insert the cables through the connector together or one by one. Ideal for circuit breaker panel use.

Compliance

- – Standard 514B and 514C
- – C22.2 #18

Reference Data

- THE INSIDER U.S. Patent 7,211,744

THE INSIDER® SPECIFICATIONS

Catalog Number	Trade Size	Description	Color	Material	Unit Ctn. Qty.	Ship Ctn. Qty.	WT. (100 Pcs)	I Two of Five Bar Code Unit Ctn.	I Two of Five Bar Code Ship Ctn.
4714	1/2"	NMSC Connector	Black	Thermoplastic	100	1000	0.861	3 0050169 04714 0	5 0050169 04714 4