

Relays/Contactors/Transformers

Honeywell offers a complete range of relays, contactors and transformers for all your residential and commercial HVAC applications. All Honeywell products are designed to exceed safety and industry life cycle standards. In order to meet these criteria, a statistically significant sample of Honeywell products are tested to failure and to our stringent qualification requirements. This testing methodology enables Honeywell to verify that these products will exceed industry standards.

Transformers

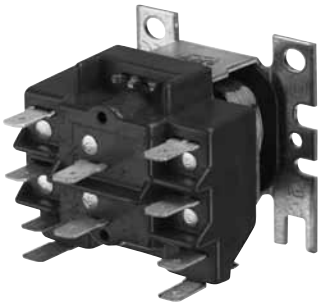
Honeywell offers NEMA — standard DC20-1992 and general purpose transformers. These transformers are available with single or multiple input voltages and with foot, conduit and plate mounting options. Transformers with circuit breakers that can be manually reset by pressing a button are also available. Honeywell also designs transformers for specific environmental requirements and with specialized termination options.



Relays

Honeywell’s switching relays are available in multiple configurations for various applications. For whatever you need — general purpose relays or electric heat relays — Honeywell has you covered.

- **General Purpose and Heavy-Duty Switching Relays** — R4222, R8222, R4228 and R8228 for use in refrigeration and air-conditioning equipment, appliances and vending machines
- **Time Delay Relay** — ST82 combines the R8222 or R8228 relay for use in compressor-run air conditioning and heat pump systems; this product features an electronic timer that delays blower shut off after the compressor has shut off.
- **Fully Enclosed Line and Low-Voltage Fan Relays** — R4225 and R8225 for control of line voltage fan motors and auxiliary circuits.



RELAYS								
Input Voltage/Coil Voltage	Switching	Product Number	Full Load Amp Rating	Frequency	Dimensions (in.) H x W X D	Electrical Connections (main)	Special Features	
24 Vac	DPST N.O.	R8228D1018	5.5	A	1 7/8 x 2 5/32 x 2 3/8	Q		
24 Vac	DPDT (1 P & 1 P Duty)	R8222V1003	12				Pilot duty	
	DPDT — Pilot Duty	R8222N1011						80 sec shut off delay
	DPDT	R8222D1014						
	DPDT	ST82D1004						
120 Vac	SPDT	R8222B1067			2 7/32 x 2 1/16 x 2 9/16			
	DPDT — Pilot Duty	R4222N1002						
	DPDT	R4222D1013					1 7/8 x 2 5/32 x 2 3/8	
SPDT	R4222B1082							
208/240 Vac	DPDT	R4222D1021						
24 Vac	SPDT	R8225A1017		14	B	2 11/16 x 2 1/2 x 3 7/16	L	
	DPST N.O.	R8225D1003						
120 Vac	SPDT, 1 N.O., 1 N.C.	R4225A1008						
24 Vac	SPDT	R8228B1012	18	A	1 7/8 x 2 5/32 x 2 3/8	Q		
ELECTRIC HEAT RELAYS								
24 Vac	DPST	R8229A1005	7	B	2 3/16 x 2 3/32 x 2 1/4	CHS	Extra mounting hardware	
		R8229A1021						
ELECTRIC FURNACE SEQUENCER								
24 Vac		R8330D1039	7.2	B	3 1/16 x 4 13/16 x 2 11/32	T		
ELECTRIC HEAT CONTACTOR								
24 Vac	DPST	R8246A1038	30		2 3/16 x 2 1/4 x 3 5/16	Q, S		

Frequency:	A — 60 Hz/50 Hz; B — 60 Hz, C — 50 Hz	SPST:	Single Pole Single Throw
Approvals:	UL, CSA	DPST:	Double Pole Single Throw
Temp Rating:	-20° F to +150° F; 115° F max for R8225	DPDT:	Double Pole Double Throw
Connectors:	CHS — Combination Head Screw; L — Leadwires; Q — Quick connect; T — Terminals	SPDT:	Single Pole Double Throw

TRANSFORMERS									
Electrical Ratings (VA)	Electrical Ratings (Input Voltage)	Product Number	NEMA Rated	Mounting	Main Connections	Secondary Connections	Frequency	Dimensions (in.) H x W X D	Special Features
19 VA	120 Vac	AT20A1123	Yes	F	L	L	A	2 x 2 1/4 x 1 7/8	
40 VA	120 Vac	AT72D1006		P		S		3 7/32 x 2 7/32 x (1 1/16 into x 2 in. above plate)	
		AT72D1089		F		S		3 7/32 x 2 7/32 x 3 1/16	
		AT72D1188		P		L		3 7/32 x 2 7/32 x 2 15/16	
		AT72D1683		M		S		3 7/32 x 2 7/32 x 3 1/16	
		AT72D1956		M		L			Available only in Canada
		AT72D1691		M		S			
	AT72D1733	M		S		Available only in Canada			
	48 VA	277 Vac		AT87A1189		F		L	2 15/16 x 2 7/32 x 2 1/4
480 Vac		AT87A1155		F		L		Energy limiting overload protection	
50 VA	120/208/240 Vac	AT87A1106	M	S		Built-in protection; Primary winding burnout			
20 VA	120 Vac	AT120B1028	F	L	1 11/16 x 3 3/16 x 1 3/4	Metal end bells			
	120/208/240 Vac	AT120A1004	M	S	2 7/8 x 1 7/8 x 2 15/16	Metal end bells			
40 VA	120 Vac	AT140A1000	M	S	3 3/16 x 2 3/8 x 3 1/8	Metal end bells			
		AT140B1206	F	L	1 11/16 x 3 1/2 x 1 3/4	Plastic end caps			
	120/208/240 Vac	AT140A1018	M	S	3 3/16 x 2 3/8 x 3 1/8	Metal end bells			
		AT140B1214	F	L	1 11/16 x 3 1/2 x 1 3/4	Plastic end caps			
50 VA	120/208/240 Vac	AT150A1007	M	S	1 11/16 x 3 3/16 x 1 3/4	Metal end bells			
		AT150F1022	M	L	3 3/16 x 2 3/16 x 3 5/8	Button for resetting circuit breaker & metal end bells			
	208/277/480 Vac	AT150F1030	M	L	3 3/16 x 2 3/16 x 3 5/8	Button for resetting circuit breaker & metal end bells			
		277 Vac	AT150B1252	F	L, Q	A	1 11/16 x 3 1/2 x 1 3/4	Plastic end caps	
75 VA	120/208/240 Vac	AT175A1008	M	S	B	3 3/16 x 2 3/8 x 3 5/8	Metal end bells		
		AT175F1023	M	L		3 3/16 x 2 3/16 x 3 15/16	Button for resetting circuit breaker & metal end bells		
	208/277/480 Vac	AT175F1031	M	L	3 3/16 x 2 3/16 x 3 15/16	Button for resetting circuit breaker & metal end bells			
		120 Vac	AT88A1005	F	L	A	2 15/16 x 2 3/16 x 3 5/16	Internally fused secondary for overload protection	
	208/240 Vac	AT88A1021	F	L					
		480 Vac	AT88A1047	F	L				
	Frequency:		A — 60 Hz/50 Hz; B — 60 Hz;						
Mounting:		C — Conduit ; F — Foot; P — Plate; M — Foot, Conduit, Plate (F models do not come with plate options)							
Connections:		L — Leadwires (9 in. to 13 in.); Q — Quick Connects; S — Screw Terminals							
Approval		UL, CSA							