



# CHANGE THE WAY YOU HEAT

NUHEAT CABLE IS AN EASY-TO-INSTALL ELECTRIC FLOOR HEATING SYSTEM THAT COMBINES INSTALLATION VERSATILITY WITH ADVANCED NEW TECHNOLOGY.

Offering the ultimate in installation flexibility, Nuheat Cable allows for on-site adjustments to heating coverage. Coupled with newly redesigned cable guides and a low-profile cold lead, adding heated floors to your renovation or new construction project has never been easier.

To find a distributor near you and to learn more about how you can change the way you heat, visit [www.nuheat.com](http://www.nuheat.com)

## FAST FACTS

- Heats tile, stone and laminate/engineered wood floors
- Zero EMF (electromagnetic field) cable design
- Some of the industry's largest kits (240 sq ft in 240V; 120 sq ft in 120V)
- Available in 120V and 240V
- Spacing options for 12 or 15 watts/sq ft
- Thin, cold lead and connection joint
- Completely redesigned, easy-to-use cable guides
- Heats shower floors, shower benches & steam rooms
- Halfway marker on heating cable for easy layout planning
- Industry leading 25-year warranty

## FAQS

**Q: CAN NUHEAT CABLE REPLACE MY ELECTRIC BASEBOARD HEATERS?**

**A:** Yes, Nuheat Cable produces 12 watts/sq ft for a heat output of 41 BTUs/sq ft (or 15 watts/sq ft for a heat output of 51 BTUs) — easily heating most rooms.

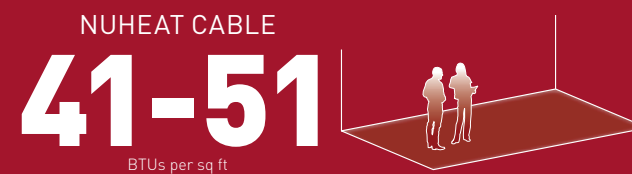
**Q: CAN I USE NUHEAT CABLE TO REPLACE MY HOT-WATER RADIATOR?**

**A:** Yes, Nuheat Cable is a viable alternative to water radiators. Invisible and maintenance-free, Nuheat Cable is a perfect heating option for renovations or additions.

**Q: WILL NUHEAT CABLE HEAT THE WHOLE ROOM OR JUST THE FLOOR?**

**A:** The whole room! Nuheat Cable transforms the entire floor area into the room's heat source — guaranteeing even, consistent heat.

## HEAT COVERAGE COMPARISON



## OPERATING COST EXAMPLE

	ft <sup>2</sup>	🕒	\$*
Bathroom	50	5.5 hrs	17¢
Kitchen	150	7.5 hrs	70¢
Living Room	200	7.5 hrs	94¢

\* Average winter operating cost. Based on US Energy Information Administration 2012 national average of \$0.12/kWh and modern insulation standards.



## INSTALLATION



A professional tile setter installs Nuheat Cable onto the subfloor. A certified electrician connects the system to your household wiring.

## THERMOSTATS



### SIGNATURE

WiFi-Enabled Floor Heating Thermostat

- WiFi-enabled
- 3.5" Color touchscreen
- Energy usage monitor
- 7-day programmability
- Dual-voltage (120V & 240V)



### HOME

Universal Floor Heating Thermostat

- 3.5" Color touchscreen
- Energy usage monitor
- 7-day programmability
- Dual-voltage (120V & 240V)



### HARMONY

Designer Inspired Thermostat

- Flush mounts behind any double-gang wall plate
- 7-day programmability
- Dual-voltage (120V & 240V)



### ELEMENT

Non-Programmable Control

- Manual temperature control
- Dual-voltage (120V & 240V)

All thermostats come with manufacturer's limited (3) three-year warranty (valid from the date of manufacture) and built-in GFCI protection.

### NUHEAT CABLE (120V)

SQUARE FOOT COVERAGE		MODEL NO.	CABLE LENGTH (FT)	AMPS	WATTS
STANDARD SPACING*	ALTERNATE SPACING**				
8	6	N1C008	29	0.7	80
12	9	N1C012	47	1.2	138
15	12	N1C015	57	1.4	170
25	20	N1C025	98	2.5	299
30	25	N1C030	120	2.9	343
40	30	N1C040	148	3.7	442
50	40	N1C050	188	4.7	562
60	50	N1C060	234	6.0	719
70	55	N1C070	265	6.8	810
80	65	N1C080	318	7.9	947
85	70	N1C085	334	8.5	1021
95	80	N1C095	377	9.7	1161
110	90	N1C110	423	10.8	1299
120	100	N1C120	474	12.2	1461

### NUHEAT CABLE (240V)

SQUARE FOOT COVERAGE		MODEL NO.	CABLE LENGTH (FT)	AMPS	WATTS
STANDARD SPACING*	ALTERNATE SPACING**				
15	12	N2C015	56	0.7	165
20	15	N2C020	80	0.9	224
25	20	N2C025	102	1.3	302
35	30	N2C035	136	1.7	403
45	35	N2C045	178	2.2	523
55	45	N2C055	207	2.6	632
65	50	N2C065	250	3.1	742
70	60	N2C070	277	3.5	842
85	70	N2C085	334	4.3	1020
90	75	N2C090	358	4.6	1102
100	85	N2C100	393	5.0	1211
120	100	N2C120	472	5.9	1427
135	110	N2C135	529	6.8	1621
145	120	N2C145	561	7.1	1704
160	130	N2C160	630	8.0	1914
170	140	N2C170	665	8.6	2054
190	160	N2C190	757	9.6	2314
215	180	N2C215	849	10.8	2589
240	200	N2C240	953	12.1	2905

For installations where higher heat output is required, alternating 3 7/8" spacing (15 watts/sq. ft.) may be used.

\* 3" Spacing - 12 watts/sq. ft.

\*\* Alternating 3 7/8" spacing - 15 watts/sq. ft.

# Want an easier install?



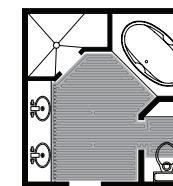
## Nuheat Mat Floor Heating Solutions

PRE-BUILT LIKE AN ELECTRIC BLANKET, NUHEAT MAT IS AN ELECTRIC FLOOR HEATING SYSTEM THAT BRINGS SOOTHING HEAT TO TILE, STONE, LAMINATE AND ENGINEERED WOOD FLOORS.

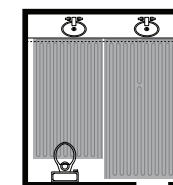
A cost-effective heating solution, Nuheat Mat is inexpensive to install and does not require ductwork or plumbing as with other heating systems.

Both Nuheat Custom Mats and Nuheat Standard Mats offer an entirely maintenance-free heating alternative — with no cold spots.

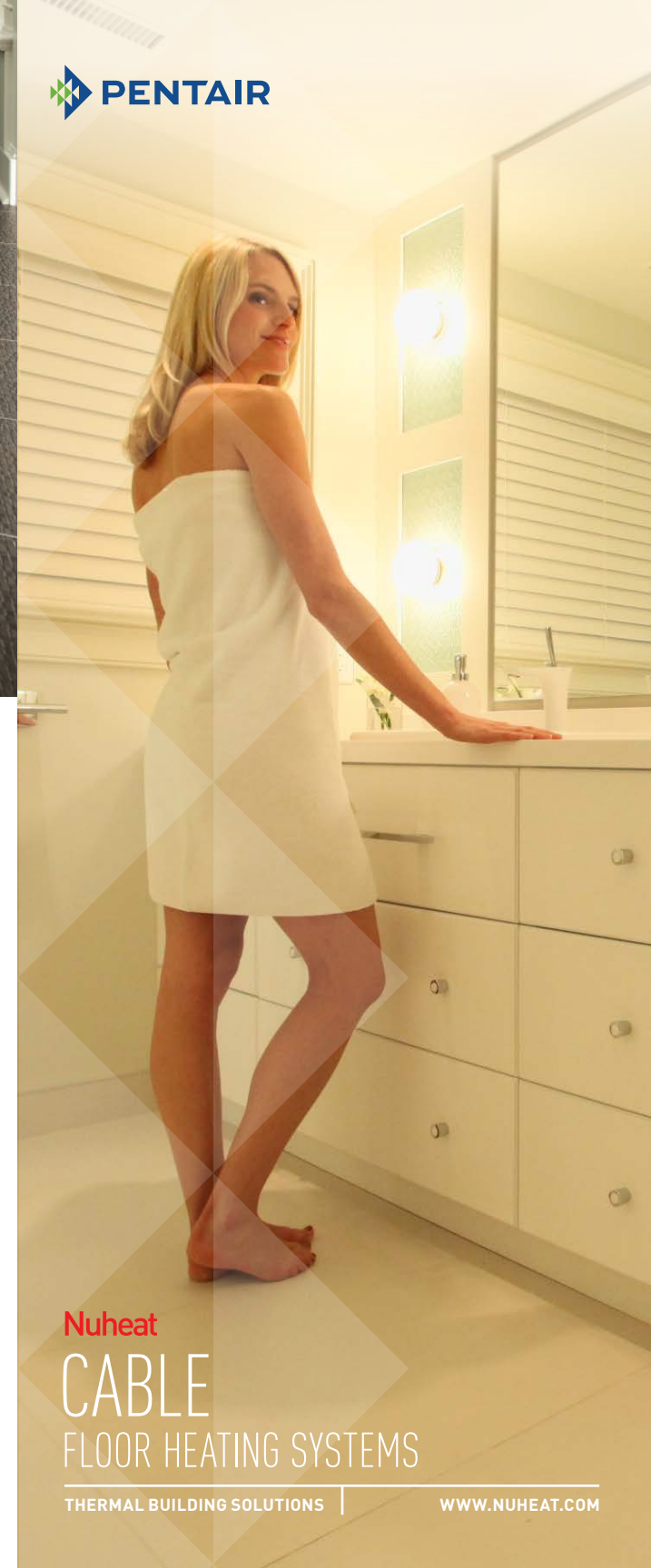
To find a distributor near you and to learn more about how you can change the way you heat, visit [www.nuheat.com](http://www.nuheat.com)



Custom mat layout



Standard mat layout



Nuheat  
CABLE  
FLOOR HEATING SYSTEMS

THERMAL BUILDING SOLUTIONS

[WWW.NUHEAT.COM](http://WWW.NUHEAT.COM)



**NORTH AMERICA**  
Tel: +1.800.778.9276  
Fax: +604.529.4404  
[www.nuheat.com](http://www.nuheat.com)  
[info@nuheat.com](mailto:info@nuheat.com)



Pentair and Nuheat are owned by Pentair or its global affiliates. All other trademarks are the property of their respective owners. Pentair reserves the right to change specifications without prior notice. © 2015 Pentair.

THERMAL BUILDING SOLUTIONS | EN-NuheatCable-SB-H59282 05/15

Printed in Canada