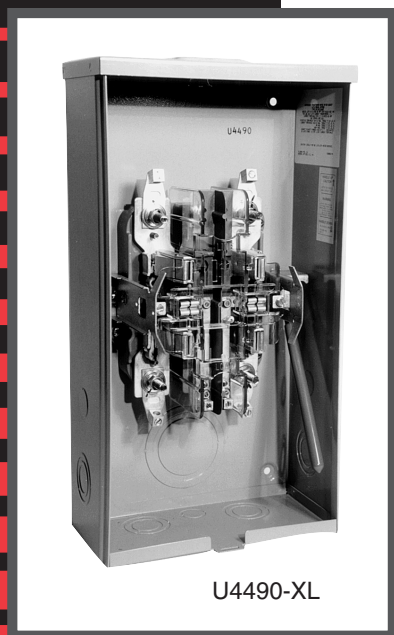
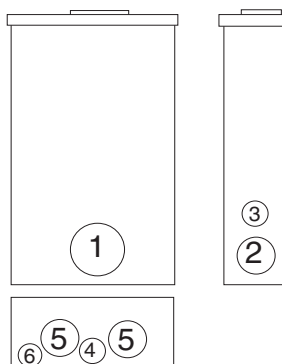


Milbank Meter Mounting Equipment

Transformer Rated Heavy Duty Lever Bypass

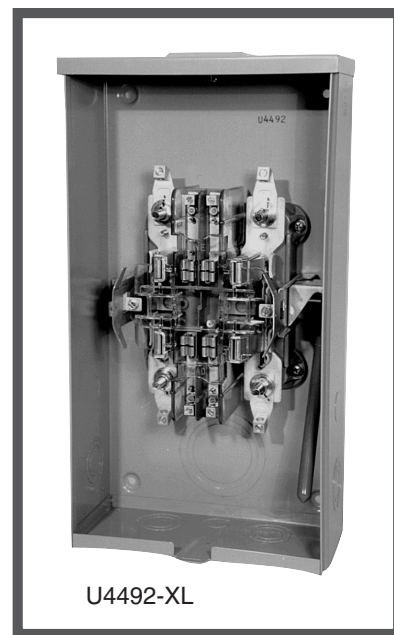


U4490-XL



HUB CHART FOR
SMALL "RL" OPENING
(STANDARD)

SUFFIX	SIZE	MILBANK NO.
WL	1"	A7514
YL	1 $\frac{1}{4}$ "	A7515
ZL	1 $\frac{1}{2}$ "	A7516
DL	2"	A7517
EL	2 $\frac{1}{2}$ "	A7518



U4492-XL



80 AMP —6, 8, & 13 TERMINAL—LEVER BYPASS TRANSFORMER RATED—RINGLESS—600VAC

NO. OF TERMS	SERVICE	CATALOG NUMBER	HUB	CONNECTORS CU	BY- PASS	DIMENSIONS			CONCENTRIC K.O.'S					
						D"	W"	H"	1	2	3	4	5	6
6	OH / UG	U4490-XL	C.P.	#14 - #4 MAX	LEVER	4 $\frac{7}{8}$	10	18 $\frac{1}{2}$	3	1 $\frac{1}{2}$	$\frac{3}{4}$	$\frac{3}{4}$	1 $\frac{1}{2}$	$\frac{1}{4}$
8	OH / UG	U4492-XL	C.P.	#14 - #4 MAX	LEVER	4 $\frac{7}{8}$	10	18 $\frac{1}{2}$	3	1 $\frac{1}{2}$	$\frac{3}{4}$	$\frac{3}{4}$	1 $\frac{1}{2}$	$\frac{1}{4}$
13	OH / UG	U4493-XL	C.P.	#14 - #4 MAX	LEVER	4 $\frac{7}{8}$	10	18 $\frac{1}{2}$	3	1 $\frac{1}{2}$	$\frac{3}{4}$	$\frac{3}{4}$	1 $\frac{1}{2}$	$\frac{1}{4}$

HUBS: For proper hub selection see the hub suffix chart .

BYPASS: Lever operates current bypass device and also supplies clamping action on current meter spades.

CONNECTORS: Units are supplied with mechanical type connectors (#4 max.) If compression type connectors (#10) are preferred, change catalog prefix to "S" (i.e. U4492-XL becomes S4492-XL.) The "S" also designates non-U/L.

REMOVABLE HANDLE: When removable handle is desired add suffix "-RH" to catalog number (i.e. U4493-XL becomes U4493-XL-RH.)

REPLACEMENT REMOVABLE HANDLE: When a replacement removable handle (RH) is required order part #Z706850-SC. Replacement handle will only work with factory ordered RH units.

816.483.5314 phone

816.483.6357 fax

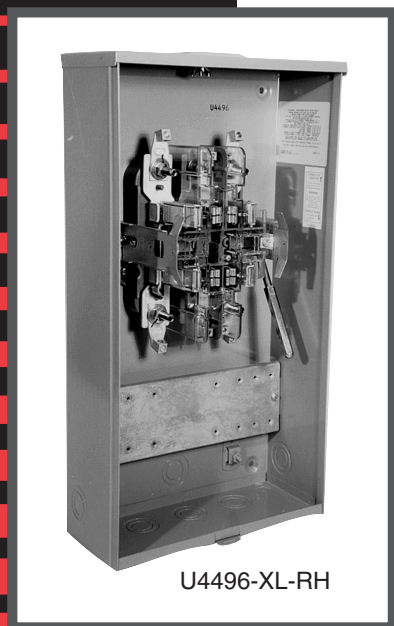
www.milbankmfg.com

TRHDLB 06/04

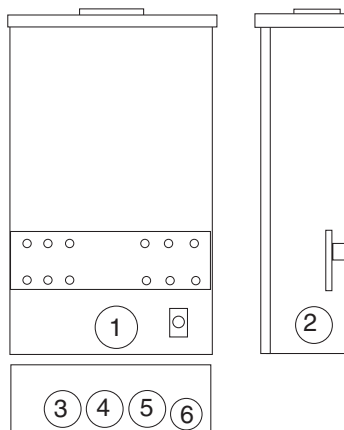


Milbank Meter Mounting Equipment

Transformer Rated Heavy Duty Lever Bypass



U4496-XL-RH



U4497-XL

**20 AMP* —6, 8 & 13 TERMINAL —TEST SWITCH ENCLOSURE
LEVER BYPASS—TRANSFORMER RATED—RINGLESS**

NO. OF TERMS	SERVICE	CATALOG NUMBER	HUB	CONNECTORS CU	BY- PASS	DIMENSIONS			CONCENTRIC K.O.'S					
						D"	W"	H"	1	2	3	4	5	6
6	OH / UG	U4494-XL	C.P.	#14 - #4 MAX	LEVER	4 ⁷ / ₈	12	22	1 ¹ / ₄	1 ¹ / ₄	1 ¹ / ₄	1 ¹ / ₄	1 ¹ / ₄	1 ¹ / ₄ , 1 ¹ / ₂
8	OH / UG	U4496-XL	C.P.	#14 - #4 MAX	LEVER	4 ⁷ / ₈	12	22	1 ¹ / ₄	1 ¹ / ₄	1 ¹ / ₄	1 ¹ / ₄	1 ¹ / ₄	1 ¹ / ₄ , 1 ¹ / ₂
13	OH / UG	U4497-XL	C.P.	#14 - #4 MAX	LEVER	4 ⁷ / ₈	12	22	1 ¹ / ₄	1 ¹ / ₄	1 ¹ / ₄	1 ¹ / ₄	1 ¹ / ₄	1 ¹ / ₄ , 1 ¹ / ₂

HUBS: For proper hub selection see the hub suffix chart .

BYPASS: Lever operates current bypass device and also supplies clamping action on current meter spades.

PREWIRING: If standard factory pre-wiring is required, refer to wiring diagrams in the general engineering section of the Standard Milbank catalog. Determine appropriate diagram and send copy with order. If custom factory prewiring is required, specify on order. Be sure to include meter socket catalog number, test switch model and number, and meter form number. Please be sure to provide a copy of your wiring diagram.

TEST SWITCH COVERS: Units on this page can be used with clear lexan cover.

CONNECTORS: Units are supplied with mechanical type connectors (#4 max.) If compression type connectors (#10) are preferred, change catalog prefix to "S" (i.e. U4497-XL becomes S4497-XL.) The "S" also designates non-U/L.

REMOVABLE HANDLE: When removable handle is desired add suffix "-RH" to catalog number (i.e. U4493-XL becomes U4493-XL-RH.)

REPLACEMENT REMOVABLE HANDLE: When a replacement removable handle (RH) is required order part #Z706850-SC. Replacement handle will only work with factory ordered RH units.

***BLOCK ASSEMBLY:** Block assembly rated at 80 amps—test switch rated at 20 amps—therefore, unit defaults to test switch rating of 20 amps.

816.483.5314 phone

816.483.6357 fax

www.milbankmfg.com

