



A.L.P.
ALP-12/120
Female Conical Prismatic Lens

ALP-12/120

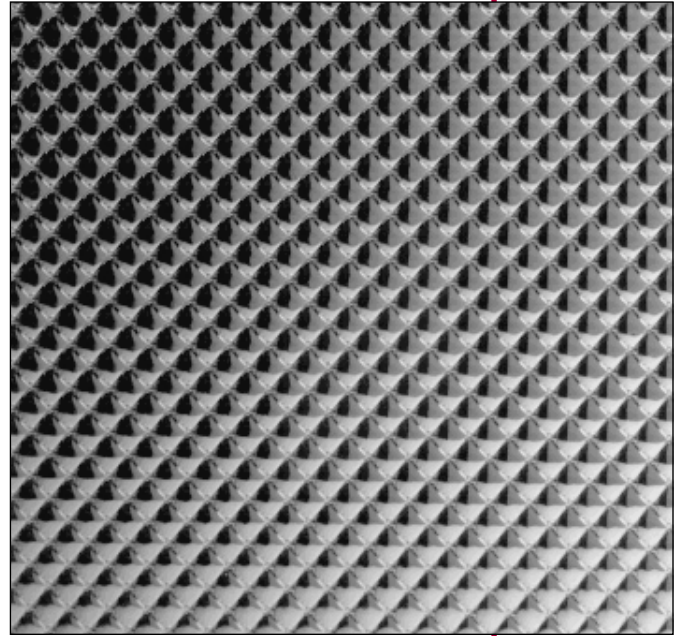
General Information

ALP-12/120 is a **quality extruded lens** that provides very good **low brightness control** with excellent light output. The lens utilizes a **female conical prism** pattern, that is optically designed to provide excellent light control.

The ALP-12/120 pattern has become a **standard** in the industry, offering **economy** with **quality**.

Approved by Major Building Codes

A.L.P. lighting panels meet all requirements for approval of acrylic plastic for use as light diffusers and lenses as specified in building codes throughout the country.



ALP-12

Catalog Number	Description	Thickness	Dimensions	Carton Quantity	Carton Weight
Polystyrene Panels					
ALP120 14CS	Clear	.100"	11-3/4" x 47-3/4"	40	40
ALP120 22CS	Clear	.100"	23-3/4" x 23-3/4"	40	40
ALP120 24CS	Clear	.100"	23-3/4" x 47-3/4"	20	40
ALP120 14OS	White	.100"	11-3/4" x 47-3/4"	40	40
ALP120 22OS	White	.100"	23-3/4" x 23-3/4"	40	40
ALP120 24OS	White	.100"	23-3/4" x 47-3/4"	20	40
Acrylic Panels					
ALP120 14CA	Clear	.100"	11-3/4" x 47-3/4"	40	50
ALP120 22CA	Clear	.100"	23-3/4" x 23-3/4"	40	50
ALP120 24CA	Clear	.100"	23-3/4" x 47-3/4"	20	50
ALP120 22X22CA	Clear	.100"	22-1/2" x 22-1/2"	40	50
ALP120 22X46CA	Clear	.100"	22-1/2" x 46-1/2"	20	50
ALP120 14OA	White	.100"	11-3/4" x 47-3/4"	40	50
ALP120 22OA	White	.100"	23-3/4" x 23-3/4"	40	50
ALP120 24OA	White	.100"	23-3/4" x 47-3/4"	20	50
ALP120 14CA110	Clear	.110"	11-3/4" x 47-3/4"	40	60
ALP120 22CA110	Clear	.110"	23-3/4" x 23-3/4"	40	60
ALP120 24CA110	Clear	.110"	23-3/4" x 47-3/4"	20	60
ALP120 28CA110*†	Clear	.110"	24" X 100"	1	5
ALP120 50X100CA110*†	Clear	.110"	50" X 100"	1	12
ALP12 14CA	Clear	.125"	11-3/4" x 47-3/4"	40	52
ALP12 22CA	Clear	.125"	23-3/4" x 23-3/4"	40	52
ALP12 24CA	Clear	.125"	23-3/4" x 47-3/4"	20	52
ALP12 50X51 CA*†	Clear	.125"	50" x 51"	1	8
Polycarbonate Panels					
ALP12 14CP	Clear	.125"	11-3/4" x 47-3/4"	40	50
ALP12 22CP	Clear	.125"	23-3/4" x 23-3/4"	40	50
ALP12 24CP	Clear	.125"	23-3/4" x 47-3/4"	20	50
Acrylic Radio Interference Filter Grid Panels (contact Customer Service)					
ALP12 14CARF	Clear	.125"	11-3/4" x 47-3/4"	50	62
ALP12 22CARF	Clear	.125"	23-3/4" x 23-3/4"	50	62
ALP12 24CARF	Clear	.125"	23-3/4" x 47-3/4"	25	62

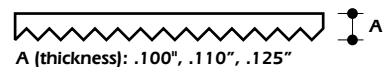
* Shipment of oversize lenses are subject to a special packaging charge.

† Panels are not self-supporting.

All 1' x 4' and 2' x 2' lenses MUST be purchased in even multiples. Special sizes and shapes are available, contact A.L.P.

ALP-12/120 Profile

section



A (thickness): .100", .110", .125"

Nominal Sizes

1' x 4'

2' x 2'

2' x 4'

50" x 51"

24" x 100"

50" x 100"

Colors and Materials

White

Polystyrene

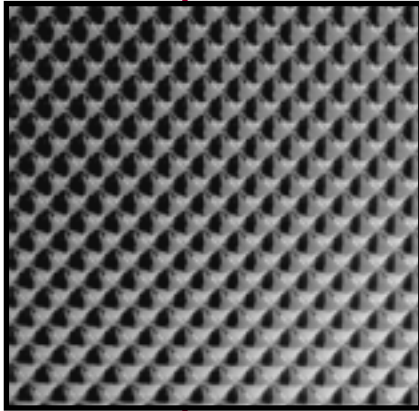
Acrylic

Polycarbonate

Radio Interference Filter

**For more information, or to place an order,
 contact Customer Service.**

ALP-12/120 PHOTOMETRICS

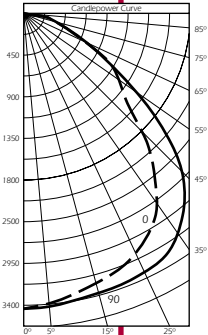


Specifications

ALP-12/120 Prismatic Lens shall be as manufactured by A.L.P. Lighting Components, Inc. Standard thicknesses are .100", .110" and .125".

Acrylic Material Used Meets or Exceeds Recognized Standards

The acrylic used in A.L.P. prismatic lighting panels is 100% high molecular weight virgin material meeting grade 8 requirements as set forth in table 2 of ASTM D-788-69a. It exceeds IES-NEMA-SPI standards for acrylic material by 100%. Under normal interior conditions these panels will perform satisfactorily of 20 years.



TS: TECHNICAL SUPPORT

Building Acoustics & Lighting Laboratories, Inc.
Test Report No. 5712.0, Date 3/16/89.

Description: Commercially Available 2' x 4' 40W Troffer with pattern 12 lens (.090 nominal).
Lamp Type: F40T12RS/WW
Lumens: 3200, Number of Lamps: 4

* Other testing results available upon request.

Total Luminaire Efficiency:	71.3
Plane:	0° 90°
Spacing Criteria:	1.3 1.4

CANDLE POWER DISTRIBUTION

VER. ANG.	HORIZONTAL ANGLE					ZONAL LUMENS
	0.0	22.5	45.0	67.5	90.0	
0.0	3471	3471	3471	3471	3471	
5.0	3455	3457	3470	3486	3482	331.3
15.0	3178	3189	3255	3314	3328	922.1
25.0	3221	3282	3405	3512	3543	1571.6
35.0	2804	2904	3056	3184	3258	1912.2
45.0	1937	2069	2276	2582	2780	1797.9
55.0	1349	1369	1572	1688	1680	1378.0
65.0	814	647	672	761	782	714.3
75.0	410	327	277	413	376	373.0
85.0	124	104	99	120	116	120.9
90.0	0	0	0	0	0	

ZONAL LUMEN SUMMARY/LUMINANCE DATA IN FOOT LAMBERTS

ZONAL LUMEN SUMMARY				LUMINANCE DATA						
ZONE	LUMENS	PCT. LAMP	PCT. FIXT.	VERT. ANG.	AVG. PAR.	MAX PAR.	MX/AV RATIO	AVG NORM	MAX NORM	MX/AV RATIO
0-30	2825	22.1	31.0	45	1223	1718	1.4	1756	2418	1.4
0-40	4737	37.0	51.9	55	1051	1471	1.4	1308	1988	1.5
0-60	7913	61.8	86.8	65	861	1089	1.3	827	1380	1.7
0-90	9121	71.3	100.0	75	708	1014	1.4	649	1089	1.7
90-180	0	0.0	0.0	85	636	1080	1.7	595	1014	1.7
0-180	9121	71.3	100.0							

IES SPACING CRITERIA: END = 1.3, DIAGONAL = 1.4, CROSS = 1.4
TESTED IN ACCORDANCE WITH CURRENT IES PROCEDURES
LUMEN TO CANDLEPOWER RATIO = 9.15

ZONAL CAVITY COEFFICIENTS OF UTILIZATION

Ceiling Wall RCR	EFFECTIVE FLOOR CAVITY REFLECTANCE = 20																									
	80				70				50				30				10				00					
	70	50	30	10	70	50	30	10	50	30	10	50	30	10	50	30	10	50	30	10	50	30	10	50	30	10
0	85	85	85	85	83	83	83	79	79	79	76	76	76	73	73	73	71									
1	79	76	73	71	77	74	72	70	71	69	68	69	67	66	66	65	64	62								
2	73	68	64	60	71	67	63	59	64	61	58	62	59	57	60	58	56	54								
3	67	61	56	52	66	60	55	51	58	54	50	56	52	50	54	51	49	47								
4	62	54	49	45	61	54	48	44	52	47	44	50	46	43	49	45	43	41								
5	57	49	43	38	56	48	42	38	46	42	38	45	41	37	44	40	37	36								
6	53	44	38	34	51	43	37	33	42	37	33	41	36	33	40	36	33	31								
7	48	39	33	29	47	39	33	29	38	33	29	37	32	29	36	32	29	27								
8	45	35	29	25	43	35	29	25	34	29	25	33	28	25	32	28	25	24								
9	41	32	26	22	40	31	26	22	30	25	22	30	25	22	29	25	22	20								
10	38	29	23	19	37	28	23	19	28	23	19	27	22	19	26	22	19	18								

VISUAL COMFORT PROBABILITY TABLE

100 FC Work Plane Illumination Work Plane FC = 100

ROOM DIM	LUMINAIRES LENGTHWISE								LUMINAIRES CROSSWISE																	
	MOUNTING HEIGHT																									
	W	L	8.5	10	13	16	8.5	10	13	16	W	L	8.5	10	13	16										
20	20	58	62	69	78	58	60	64	72																	
20	30	52	55	62	67	51	55	59	62																	
20	40	50	52	55	60	48	51	54	57																	
20	60	47	49	52	55	46	48	50	53																	
30	20	60	63	68	75	60	62	65	71																	
30	30	53	56	59	64	53	56	57	60																	
30	40	50	52	54	57	49	51	53	56																	
30	60	47	49	50	52	46	47	48	51																	
30	80	46	47	48	50	45	46	46	48																	
40	20	62	65	69	74	62	64	66	71																	
40	30	55	57	60	63	55	57	59	61																	
40	40	51	53	54	57	50	52	54	56																	
40	60	48	49	50	52	47	48	49	51																	
40	80	47	48	48	49	46	47	46	48																	
40	100	46	47	47	48	46	46	46	48																	
60	30	56	59	61	64	56	59	60	62																	
60	40	52	54	55	58	52	53	55	57																	
60	60	49	50	50	52	48	49	49	51																	
60	80	47	48	48	49	47	47	46	48																	
60	100	47	47	46	47	46	46	46	48																	
100	40	56	57	58	60	55	57	58	60																	
100	60	52	53	52	54	52	52	51	54																	
100	80	50	51	49	51	50	50	48	50																	
100	100	49	49	47	49	48	49	46	47																	



GLARE CONTROL SPECIALISTS

A.L.P.

LIGHTING COMPONENTS, INC.

CORPORATE HQ: CHICAGO, IL U.S.A.

WEB SITE: WWW.ALP-LTG.COM

CENTRAL (Chicago) — (877) ALP-LTG1 • FAX: (800) 438-2500

WEST (Los Angeles) — (800) 545-6176 • FAX: (800) 545-6186

SOUTHEAST (Atlanta) — (404) 352-2110 • FAX: (800) 545-6192

EAST (Philadelphia) — (856) 486-0700 • FAX: (800) 545-6192

© 1999 A.L.P. LIGHTING COMPONENTS, INC., PRINTED IN THE U.S.A., 12 068