

LENOX 

CATALOGUE

2013 - 2014



WHAT THE LENOX® HERITAGE OF QUALITY AND PERFORMANCE MEANS FOR YOU.

The LENOX® name is inspired by the speed, strength and sharp teeth of the wolves that once roamed the hills near the western shore of Loch Lomond in Scotland - home to the Earl of LENOX®.

With that inspiration, we began our company in 1915, making the first LENOX® hacksaw blades with just ten employees. Now, over 98 years later, LENOX® remains dedicated to producing the highest quality, best performing cutting products. As a result, we have grown to employ more than 700 people.

Most of them work at our ISO 9001 certified facility in East Longmeadow, Massachusetts, U.S.A., where we design, test and manufacture a broad range of power tool accessories and hand tools. Professionals count on the performance of our products in more than 70 countries around the world.

We continue to invest in our facilities, strongly supporting research and development and integrating the most advanced manufacturing technology. The result is the breakthrough performance and endurance of our newest products - including our LENOX® Speed Slot T2 Hole Saw.

Above all, we are committed to fully meeting the needs of our customers and ensuring complete satisfaction with our products and services. If you are new to LENOX®, thank you for the opportunity to earn your business.

Contents

	Page
Power Tool Accessories	4
Reciprocating Saw Blades	4
Bi-Metal Hole Saws	12
Diamond® Hole Saws	14
Holes Saws and Accessories	16
Vari-Bit Step Drill Bits	19
Jigsaw Blades	20
Hand Tools	22
Hacksaw Frames & Blades	22
Handsaws	25
Plastic Tubing Cutters	26
Metal Tubing Cutters	28
Index	30



1915
LENOX® American Saw founded by John Swanson, Carl Ericson and Carl Davis with 10 employees manufacturing Hacksaw Blades on Taylor Street in Springfield, MA

1918
Band Saw production begins

1959
Hole Saws added to the product line

1961
LENOX® began manufacturing Band Saw Blades at the East Longmeadow facility

1977
Hand Tools and Power Tool Accessories added to the product line to launch the tool division of LENOX®

1977
First Bi-Metal Reciprocating Saw Blade made by Lee HACKMAN® Breton using the same technology used to make Band Saw Blades

1981
HACKMAN® cut his first car in half using a LENOX® Hacksaw Blade. It took him 26 minutes, 6 seconds

1996
LENOX® achieved ISO 9001 certification making LENOX® the first in the blade industry to become certified

2003
LENOX® acquired by Newell Rubbermaid

2008
LENOX® T2™ Technology introduced to Reciprocating Blades

2011
The launch of the Bi-Metal SPEED SLOT® Hole Saw, featuring a staircase design for easy plug removal

Newell Rubbermaid
Brands That Matter

HERITAGE

The LENOX® brand stands for breakthrough **PERFORMANCE**. It's enabled by uncompromising engineering, top-quality materials and manufacturing excellence—and supported by a team of experts focused 100 percent on your **SUCCESS**. That was true over 90 years ago. It's true today. And it's something you can always count on. Period.



LENOX Gold® Reciprocating Saw Blades

Longest Lasting Blade. Ever.

EXTENDED BLADE LIFE

T2™ Technology and precision applied titanium coating help dissipate heat making blades last longer

FASTER CUTS

Titanium coating makes teeth more wear resistant so they stay sharp for quicker cuts

DURABLE CONSTRUCTION

Bi-Metal design stands up to the most demanding applications



WOOD



DEMOLITION



LAZER® EXTREME METAL



METAL

LENOX Gold® Wood Cutting

Item No.	Description	EAN	Master Pack	Min. Order Qty Blades/Pack*
21060656GR	656G 152 x 19 x 1,3mm 6TPI	082472201606	500	5
21062956GR	956G 229 x 19 x 1,3mm 6TPI	082472201620	250	5
21061156GR	156G 305 x 19 x 1,3mm 6TPI	082472201613	250	5

LENOX Gold® Metal Cutting

Item No.	Description	EAN	Master Pack	Min. Order Qty Blades/Pack*
21064610GR	610G 152 x 19 x 0,9mm 10TPI	082472210644	500	5
21065810GR	810G 203 x 19 x 1,3mm 10TPI	082472210651	250	5
21066414GR	414G 102 x 19 x 0,9mm 14TPI	082472210668	500	5
21067614GR	614G 152 x 19 x 0,9mm 14TPI	082472210675	500	5
21068418GR	418G 102 x 19 x 0,9mm 18TPI	082472210682	500	5
21069618GR	618G 152 x 19 x 0,9mm 18TPI	082472210699	500	5
21070818GR	818G 203 x 19 x 0,9mm 18TPI	082472210705	250	5
21071424GR	424G 102 x 19 x 0,9mm 24TPI	082472210712	500	5
21072624GR	624G 152 x 19 x 0,9mm 24TPI	082472210729	500	5
21073824GR	824G 203 x 19 x 0,9mm 24TPI	082472210736	250	5

LENOX Gold® Demolition

Item No.	Description	EAN	Master Pack	Min. Order Qty Blades/Pack*
210886066GR	6066G 152 x 22 x 1,6mm 6TPI	082472210880	500	5
21089960GR	960G 229 x 22 x 1,6mm 10TPI	082472210897	250	5
21090966GR	966G 229 x 22 x 1,6mm 6TPI	082472210903	250	5
21091106GR	106G 305 x 22 x 1,6mm 6TPI	082472210910	250	5

LENOX Gold® LAZER Heavy Metal Cutting

Item No.	Description	EAN	Master Pack	Min. Order Qty Blades/Pack*
210926108GR	6108G 152 x 25 x 1,1mm 8TPI	082472210927	500	5
210969108GR	9108G 229 x 25 x 1,1mm 8TPI	082472210965	250	5
210936110GR	6110G 152 x 25 x 1,1mm 10TPI	082472210934	500	5
210979110GR	9110G 229 x 25 x 1,1mm 10TPI	082472210972	250	5
2110012110GR	12110G 305 x 25 x 1,1mm 10TPI	082472211009	250	5
210946114GR	6114G 152 x 25 x 1,1mm 14TPI	082472210941	500	5
210989114GR	9114G 229 x 25 x 1,1mm 14TPI	082472210989	250	5
2110112114GR	12114G 305 x 25 x 1,1mm 14TPI	082472211016	250	5
210956118GR	6118G 152 x 25 x 1,1mm 18TPI	082472210958	500	5
210999118GR	9118G 229 x 25 x 1,1mm 18TPI	082472210996	250	5
2110212118GR	12118G 305 x 25 x 1,1mm 18TPI	082472211023	250	5



LONGEST LASTING BLADE. EVER.

EXTENDED BLADE LIFE
T2™ Technology and precision applied titanium coating help dissipate heat making blades last longer

FASTER CUTS
Titanium coating makes teeth more wear resistant so they stay sharp for quicker cuts

DURABLE CONSTRUCTION
Bi-metal design stands up to the most demanding applications

Why use the new T2™ Blades?

Lasts longer: Up to 100%**

Cuts faster: Up to 25%**

Shatter resistant: Bi-Metal

**vs. previous Lenox blades

T2™ proprietary technology

*Items can only be ordered in multiples of the Min. Order Quantity

Bi-Metal Reciprocating Saw Blades

Long Lasting, Fast Cutting and Versatile

ENGINEERED FOR PERFORMANCE

The superior design minimizes friction and heat build-up while cutting through the widest variety of metal materials



T2™ TECHNOLOGY

A revolutionary new blade design that delivers up to 100% longer blade life and 25% faster performance versus the prior generation of LENOX Reciprocating Saw Blades



Standard Bi-Metal Reciprocating Saw Blades

Item No.	Description	EAN	Master Pack	Min. Order Qty Blades/Pack*
20550414R	414R 102 x 19 x 0,9mm 14TPI	082472205503	500	5
20552418R	418R 102 x 19 x 0,9mm 18TPI	082472205527	500	5
20554424R	424R 102 x 19 x 0,9mm 24TPI	082472205541	500	5
20575634R	634R 152 x 19 x 1,3mm 4TPI	082472205756	500	5
20556676RC	676RC 152 x 11 x 1,3mm 6TPI Contour Cutting	082472205565	500	5
20560606R	606R 152 x 19 x 0,9mm 6TPI	082472205602	500	5
20572656R	656R 152 x 19 x 1,3mm 6TPI	082472205725	500	5
20570636RP	636RP 152 x 19 x 1,3mm 6TPI Plaster Cutting	082472205701	500	5
20582956R	956R 229 x 19 x 1,3mm 6TPI	082472205824	250	5
20585156R	156R 305 x 19 x 1,3mm 6TPI	082472205855	250	5
20562610R	610R 152 x 19 x 0,9mm 10TPI	082472205626	500	5
20580810R	810R 203 x 19 x 1,3mm 10TPI	082472205800	250	5
20583110R	110R 305 x 19 x 1,3mm 10/14TPI	082472205831	250	5
20564614R	614R 152 x 19 x 0,9mm 14TPI	082472205640	500	5
21519814R	814R 203 x 19 x 0,9mm 14TPI	082472215199	250	5
20566618R	618R 152 x 19 x 0,9mm 18TPI	082472205664	500	5
20578818R	818R 203 x 19 x 0,9mm 18TPI	082472205787	250	5
21510118R	118R 305 x 19 x 1,3mm 18TPI	082472215106	250	5
20568624R	624R 152 x 19 x 0,9mm 24TPI	082472205688	500	5
20579824R	824R 203 x 19 x 0,9mm 24TPI	082472205794	250	5
205308656R	B656R 152 x 19 x 1,3mm 6TPI	082472205305	500	25
205588956R	B956R 229 x 19 x 1,3mm 6TPI	082472205589	250	25
205908810R	B810R 203 x 19 x 1,3mm 10TPI	082472205909	250	25
204938610R	B610R 152 x 19 x 0,9mm 10TPI	082472204933	500	25
204918110R	B110R 305 x 19 x 1,3mm 10/14TPI	082472204919	250	25
204948614R	B614R 152 x 19 x 0,9mm 14TPI	082472204940	500	25
205298618R	B618R 152 x 19 x 0,9mm 18TPI	082472205299	500	25

T2™ TECHNOLOGY
Tooth design delivers up to 2x the life versus previous model

OPTIMISED BLADE GEOMETRY
Each blade has a unique configuration including an aggressive tang angle and tapered blade shape to allow for cutting in tight areas

ENGINEERED FOR PERFORMANCE
Special design minimises friction and heat build up while cutting through the widest variety of metal materials

Multi Material Reciprocating Saw Blades



Item No.	Description	EAN	Master Pack	Min. Order Qty Blades/Pack*
1769340	635R 152 x 19 x 0,9mm 10/14TPI	5706915078565	500	5
1769341	835R 203 x 19 x 0,9mm 10/14TPI	5706915078572	250	5

LAZER® Reciprocating Saw Blades



Item No.	Description	EAN	Master Pack	Min. Order Qty Blades/Pack*
201706110R	6110R 152 x 25 x 1,1mm 10TPI	082472201703	500	5
201726114R	6114R 152 x 25 x 1,1mm 14TPI	082472201727	500	5
201746118R	6118R 152 x 25 x 1,1mm 18TPI	082472201741	350	5
201769110R	9110R 229 x 25 x 1,1mm 10TPI	082472201765	250	5
201789114R	9114R 229 x 25 x 1,1mm 14TPI	082472201789	250	5
201809118R	9118R 229 x 25 x 1,1mm 18TPI	082472201802	200	5
2018212110R	12110R 305 x 25 x 1,1mm 10TPI	082472201826	250	5
2018412114R	12114R 305 x 25 x 1,1mm 14TPI	082472201840	250	5
2019012118R	12118R 305 x 25 x 1,1mm 18TPI	082472201901	200	5
20185B12114R	12114R 305 x 25 x 1,1mm 14TPI	082472201857	250	25

Demolition Reciprocating Saw Blades



Item No.	Description	EAN	Master Pack	Min. Order Qty Blades/Pack*
20598966R	966R 229 x 28 x 1,6mm 6TPI	082472205985	120	2
20371966R5	966R 229 x 28 x 1,6mm 6TPI	082472203714	250	5
20500106R	106R 305 x 28 x 1,6mm 6TPI	082472205008	120	2
20597960R	960R 229 x 28 x 1,6mm 10TPI	082472205978	120	2
20372960R5	960R 229 x 28 x 1,6mm 10TPI	082472203721	250	5
205238966R	966R 229 x 28 x 1,6mm 6TPI	082472205237	250	25
205248960R	960R 229 x 28 x 1,6mm 10TPI	082472205244	250	25

Why use the new T2™ Blades?

Lasts longer: Up to 100%**
Cuts faster: Up to 25%**
Shatter resistant: Bi-Metal
 **vs. previous Lenox blades
T2™ proprietary technology
 T2™ now available on 6, 10, 10/14, 14, 18 and 24TPI on the wood and metal blades

Longer lasting: Lasts 45% longer than standard bi-metal blades
Greater strength and durability: Unique blade geometry reinforces traditional weak areas, creating stronger and more durable blades
Shatter resistant: Bi-metal blades bend and resist breaking and extend blade life
Optimised performance: Thicker (1.1 mm) and wider (25 mm) blades minimise whipping for straighter and smoother cuts
 T2™ proprietary technology now available across the entire LAZER Reciprocating Saw Blades line.

T2™ TECHNOLOGY
Tooth design delivers up to 2x the life versus previous model making demolition jobs faster and easier

MAXIMUM DURABILITY
The tallest blade on the market (28mm) prevents bending and provides maximum control in the toughest demolition applications

OPTIMISED BLADE GEOMETRY
Each blade has a unique configuration including an aggressive tang angle and tapered blade shape to allow for cutting in tight areas

T2™ proprietary technology now available across the entire Demolition Reciprocating Saw Blades line

*Items can only be ordered in multiples of the Min. Order Quantity

Fire & Rescue Reciprocating Saw Blades



Item No.	Description	EAN	Master Pack	Min. Order Qty Blades/Pack*
20592650R	650R 152 x 19 x 1,3mm 10/14TPI	082472205923	240	2
20374650R5	650R 152 x 19 x 1,3mm 10/14TPI	082472203745	500	5
20577850R	850R 203 x 19 x 1,3mm 10/14TPI	082472205770	250	5
205158650R	650R 152 x 19 x 1,3mm 10/14TPI	082472205152	500	25

Reciprocating Saw Blade Kits



1073415RKG

1497913RKM

Item No.	Description	EAN	Master Pack	Min. Order Qty
121439KPE	9 Piece Wood & Metal Kit: 2x 656R, 2x 624R, 2x 810R, 2x 818R, 1x 960R	082472121438	10	1
1214412RKD	12 Piece Demolition Kit: 3x 6066R, 3x 6114R, 2x 9114R, 2x 966R, 2x 960R	082472121445	10	1
1497913RKM	13 Piece Metal Kit: 3x 614R, 3x 618R, 2x 818G, 3x 818R, 2x 960R	5706915077056	10	1
1498013RKW	13 Piece Wood Kit: 3x 656R, 3x 610R, 2x 966G, 2x 966R, 3x 810R	5706915077049	10	1
1073415RKG	15RKG 15 Piece Wood & Metal : 5 x 614R, 5 x 618R, 5 x 656R	082472107340	8	1

*Items can only be ordered in multiples of the Min. Order Quantity

DIAMOND™ Grit Reciprocating Saw Blades



Item No.	Description	EAN	Master Pack	Min. Order Qty Blades/Pack*
10833800RDG	800RDG 200 x 19 x 1mm Diamond Grit, Single Tang	082472108330	90	1
1766338	800DTDG 225 x 19 x 1mm Diamond Grit, Double Tang	885363000740	90	1
1766356	100DTDG 275 x 19 x 1mm Diamond Grit, Double Tang	885363000757	90	1

Cuts Cast. Fast.
Cuts 3x faster** Narrowed kerf edge removes a thinner cross-section of material for faster cutting
Lasts 3x longer** Industrial diamonds embedded in high-strength nickel alloy braze
 **compared to Lenox® carbide grit recip



NEW **New Double Tang:** Allows end user to flip blade around, reducing amount of wasted grit and maximising cost per cut.

Master-Grit™ Blades



Item No.	Description	EAN	Master Pack	Min. Order Qty Blades/Pack*
20505600RG	600RG 152 x 20 x 0,8mm, Carbide Grit	082472205053	240	2
20506100RG	100RG 254 x 20 x 1,3mm, Carbide Grit	082472205060	100	2
20576800RG	800RG 203 x 20 x 1,0mm, Carbide Grit	082472205763	100	2

Long lasting: Super hard (RA 90-93) cutting edge cuts through even the toughest materials
Abrasive cutting: Cuts through cast iron, fibreglass, ceramic tile, clay, pipe, stone, brick, plaster and marble
Smooth cutting: MASTER-GRIT™ does not snag or chip, providing smooth cuts

Carbide Tipped Reciprocating Saw Blades



Item No.	Description	EAN	Master Pack	Min. Order Qty Blades/Pack*
205956563RCT	6563RCT 152 x 19 x 1,3mm 6TPI, Contour Bk	082472205954	150	1
205966565RCT	6565RCT 152 x 19 x 1,3mm 6TPI, Straight Bk	082472205961	150	1
205998535RCT	8535RCT 203 x 19 x 1,3mm 3TPI, Straight Bk	082472205992	100	1

Fast cutting LENOX® triple chip tooth grind cuts 25% faster than standard carbide blades.
Extreme performance Designed to cut through fibreglass, cement board, rubber and other difficult to cut materials.

*Items can only be ordered in multiples of the Min. Order Quantity



Carbide Tipped Masonry Reciprocating Blades



Fast, durable and precise cutting in all masonry materials 5 TPI blades for high-quality cuts in clay brick, limestone and Poroton blocks 1.5 TPI blades for high-quality cuts in light and aerated concrete

Item No.	Description	EAN	Master Pack	Min. Order Qty Blades/Pack*
21103235BLP	235BLP 235 x 20 x 1,2 5TPI	5706915078497	25	1
21104300BLP	300BLP 300 x 50 x 1,2 5TPI	5706915078503	25	1
21105450BLP	450BLP 450 x 50 x 1,2 5TPI	5706915078510	25	1
21107300LC	300LC 300 x 50 x 1,2 1,5TPI	5706915078534	25	1
21108450LC	450LC 450 x 50 x 1,2 1,5TPI	5706915078541	25	1

Pallet Cutting Bi-Metal Reciprocating Saw Blades



Item No.	Description	EAN	Master Pack	Min. Order Qty Blades/Pack*
10729810RPC	810RPC 200 x 19 x 0,9mm 10TPI	082472107296	250	250
107301010RPC	1010RPC 250 x 19 x 0,9mm 10TPI	082472107302	250	250

Air Saw Blades



Item No.	Description	EAN	Master Pack	Min. Order Qty Blades/Pack*
20427424T	424T 100 x 13 x 0,64mm 24TPI	082472204278	500	5
20428432T	432T 100 x 13 x 0,64mm 32TPI	082472204285	500	5

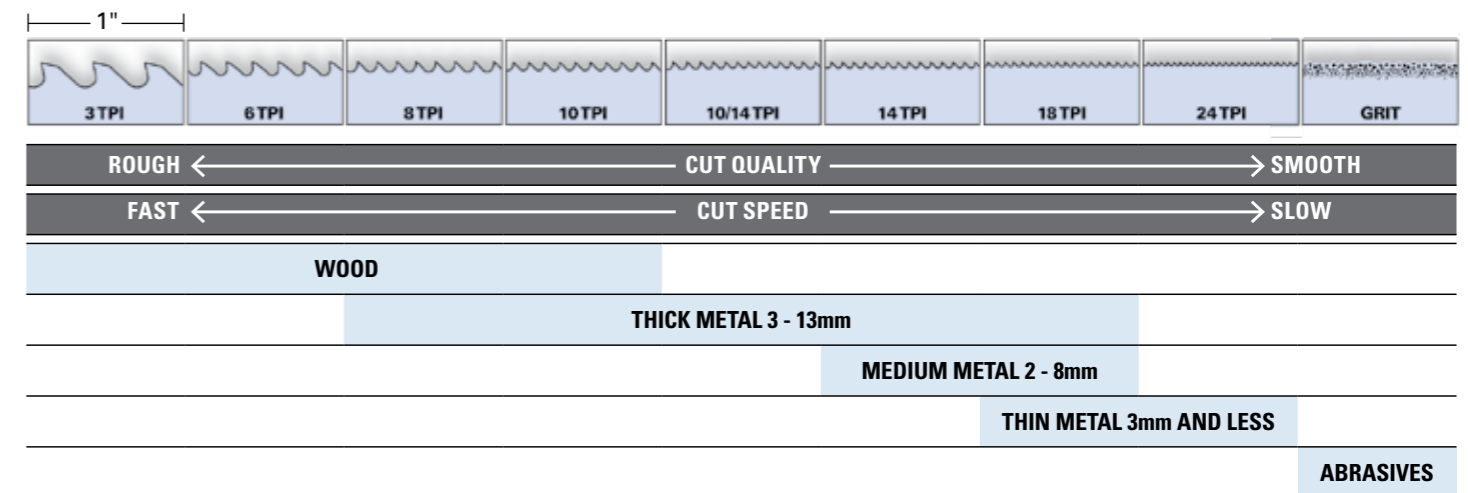
Shatter resistant: Bi-Metal blades bend and resist breaking and extend blade life
Maximum durability: For pneumatic machine cutting
Long lasting: High-speed Steel teeth provide a strong, long lasting cutting edge

*Items can only be ordered in multiples of the Min. Order Quantity

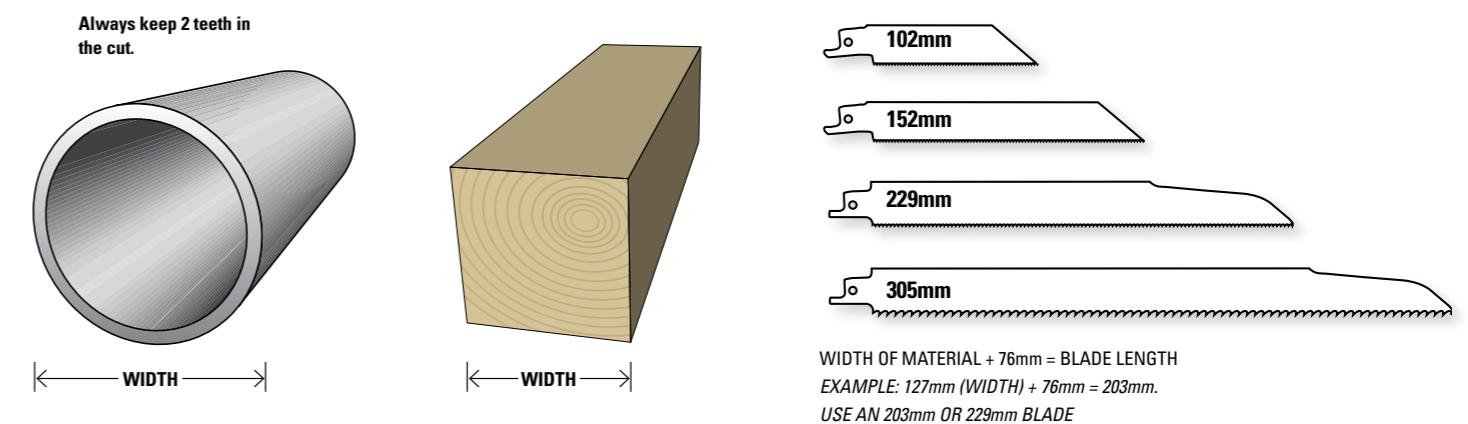
Reciprocating Saw Blade Selection Guide

	WOOD	NAIL-EMBEDDED WOOD	NON-FERROUS METAL	DEMOLITION	FIRE & RESCUE	PLASTICS & COMPOSITES	THICK METAL	MEDIUM METAL	THIN METAL	DRYWALL/PLASTER	CEMENT BOARD	CAST IRON	ABRASIVES
BEST	LENOX Gold®									CARBIDE TIPPED	LENOX DIAMOND™		
BETTER	BI-METAL		LAZER®		BI-METAL		LAZER		BI-METAL	LENOX DIAMOND™	CARBIDE GRIT		
GOOD	—		BI-METAL		—		BI-METAL		—	CARBIDE GRIT			—

Teeth Per Inch Selection Guide



Blade Length Selection Guide





Bi-Metal SPEED SLOT® Hole Saws

Long Lasting, Fast Cutting And Versatile

SPEED SLOT®

Unique staircase design for easy plug removal

UP TO 2X LIFE IN METAL CUTTING

Enhanced tooth geometry, a thin kerf design, and an advanced coating contribute to the efficiency of the cutting process

CUTTING EFFICIENCY

The hole saw is 10 percent taller than the previous model to deliver cleaner cuts through two-by-lumber.

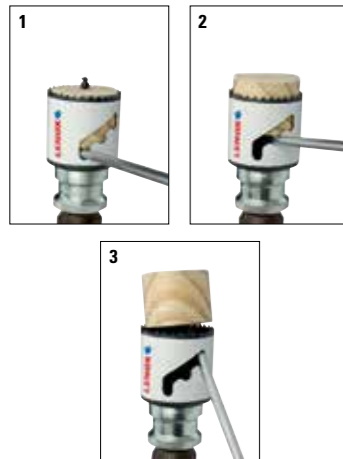
RESISTS TOOTH STRIPPAGE

Bi-Metal construction creates a hardened edge to minimise tooth stripping.

Use standard or SNAP-BACK arbor



Item No.	Description	Fits Arbor No.	EAN	Master Pack	Min. Order Qty
300099L	9L 14mm	1L, 4L or 5L	082472300093	10	1
3001010L	10L 16mm	1L, 4L or 5L	082472300109	10	1
3001111L	11L 17mm	1L, 4L or 5L	082472300116	10	1
3001212L	12L 19mm	1L, 4L or 5L	082472300123	10	1
3009820MMHS	20MM 20mm	1L, 4L or 5L	082472300987	10	1
3001313L	13L 21mm	1L, 4L or 5L	082472300130	10	1
3001414L	14L 22mm	1L, 4L or 5L	082472300147	10	1
3001515L	15L 24mm	1L, 4L or 5L	082472300154	10	1
3001616L	16L 25mm	1L, 4L or 5L	082472300161	10	1
3001717L	17L 27mm	1L, 4L or 5L	082472300178	10	1
3001818L	18L 29mm	1L, 4L or 5L	082472300185	10	1
3001919L	19L 30mm	1L, 4L or 5L	082472300192	10	1
3002020L	20L 32mm	2L, 3L or 6L	082472300208	10	1
3002121L	21L 33mm	2L, 3L or 6L	082472300215	10	1
3002222L	22L 35mm	2L, 3L or 6L	082472300222	10	1
3002323L	23L 37mm	2L, 3L or 6L	082472300239	10	1
3002424L	24L 38mm	2L, 3L, 6L or 7L	082472300246	10	1
3002525L	25L 40mm	2L, 3L, 6L or 7L	082472300253	10	1
3002626L	26L 41mm	2L, 3L, 6L or 7L	082472300260	10	1
3002727L	27L 43mm	2L, 3L, 6L or 7L	082472300277	10	1
3002828L	28L 44mm	2L, 3L, 6L or 7L	082472300284	10	1
3002929L	29L 46mm	2L, 3L, 6L or 7L	082472300291	5	1
3003030L	30L 48mm	2L, 3L, 6L or 7L	082472300307	5	1
3003232L	32L 51mm	2L, 3L, 6L or 7L	082472300321	5	1
3003333L	33L 52mm	2L, 3L, 6L or 7L	082472300338	5	1
3003434L	34L 54mm	2L, 3L, 6L or 7L	082472300345	5	1
1816241	35L 56mm	2L, 3L, 6L or 7L	0885363008951	5	1
3003636L	36L 57mm	2L, 3L, 6L or 7L	082472300369	5	1
3003838L	38L 60mm	2L, 3L, 6L or 7L	082472300383	5	1



Bi-Metal SPEED SLOT® Hole Saws

Item No.	Description	Fits Arbor No.	EAN	Master Pack	Min. Order Qty
1816242	39L 62mm	2L, 3L, 6L or 7L	0885363008968	5	1
3004040L	40L 64mm	2L, 3L, 6L or 7L	082472300406	5	1
3004141L	41L 65mm	2L, 3L, 6L or 7L	082472300413	5	1
3004242L	42L 67mm	2L, 3L, 6L or 7L	082472300420	5	1
3004343L	43L 68mm	2L, 3L, 6L or 7L	082472300437	5	1
3004444L	44L 70mm	2L, 3L, 6L or 7L	082472300444	5	1
3004646L	46L 73mm	2L, 3L, 6L or 7L	082472300468	5	1
3004848L	48L 76mm	2L, 3L, 6L or 7L	082472300482	5	1
3005050L	50L 79mm	2L, 3L, 6L or 7L	082472300505	5	1
3005252L	52L 83mm	2L, 3L, 6L or 7L	082472300529	5	1
3005454L	54L 86mm	2L, 3L, 6L or 7L	082472300543	5	1
3005656L	56L 89mm	2L, 3L, 6L or 7L	082472300567	5	1
3005858L	58L 92mm	2L, 3L, 6L or 7L	082472300581	1	1
3006060L	60L 95mm	2L, 3L, 6L or 7L	082472300604	1	1
3006262L	62L 98mm	2L, 3L, 6L or 7L	082472300628	1	1
3006464L	64L 102mm	2L, 3L, 6L or 7L	082472300642	1	1
3006666L	66L 105mm	2L, 3L, 6L or 7L	082472300666	1	1
3006868L	68L 108mm	2L, 3L, 6L or 7L	082472300680	1	1
3007070L	70L 111mm	2L, 3L, 6L or 7L	082472300703	1	1
3007272L	72L 114mm	2L, 3L, 6L or 7L	082472300727	1	1
3007474L	74L 118mm	2L, 3L, 6L or 7L	082472300741	1	1
3007676L	76L 121mm	2L, 3L, 6L or 7L	082472300765	1	1
3008080L	80L 127mm	2L, 3L, 6L or 7L	082472300802	1	1
1816243	83L 133mm	2L, 3L, 6L or 7L	0885363008975	1	1
3008888L	88L 140mm	2L, 3L, 6L or 7L	082472300888	1	1
1816245	92L 146mm	2L, 3L, 6L or 7L	0885363008982	1	1
3009696L	96L 152mm	2L, 3L, 6L or 7L	082472300963	1	1
3106106L	106L 168mm	2L, 3L, 6L or 7L	5706915081633	1	1
3112112L	112L 177mm	2L, 3L, 6L or 7L	5706915081640	1	1
3132132L	132L 210mm	2L, 3L, 6L or 7L	5706915081657	1	1



Bi-Metal SPEED SLOT® Hole Saws Kits

Item No.	Description	Fits Arbor No.	EAN	Master Pack	Min. Order Qty
1768436	9 pcs Plumber's Hole Saw Kit: 19, 22, 29, 38, 44, 68mm, Arbors: 2L, 5L, 1 x Arbor Adapter		5706915078022	-	1
1768556	17 pcs Electrician's Hole Saw Kit: 16, 19, 22, 25, 29, 32, 35, 38, 44, 51, 68, 76mm, Arbors: 1L, 2L, 2 x 4321 Pilot Drill Bits, 1 x 56PD Pilot Drill Bit		5706915078046	-	1
1768559	21 pcs Electrician's Hole Saw Kit: 19, 22, 25, 29, 35, 38, 44, 51, 57, 68, 76, 83, 92, 95, 105, 121mm, Arbors: 1L, 2L, 2 x 4321 Pilot Drill Bits, 1 x 56PD Pilot Drill Bit		5706915078053	-	1
1768662	8 pcs Electrician's Hole Saw Kit: 16, 20, 25, 32, 38, 51mm, Arbors: 1L, 2L		5706915078060	-	1
1768668	9 pcs Electrician's Hole Saw Kit: 16, 20, 25, 32, 41, 51, 64mm, Arbors: 1L, 2L		5706915078077	-	1
1768695	17 pcs Electrician's Hole Saw Kit: 19, 22, 29, 35, 44, 51, 64, 68, 76, 92, 105, 121mm, Arbors: 2L, 5L, 2 x 4321 Pilot Drill Bits, 1 x 56PD Pilot Drill Bit		5706915078107	-	1
1768696	10 pcs Electrician's Hole Saw Kit: 22, 29, 35, 44, 51, 64mm, Arbors: 2L, 5L, 1 x 4321 Pilot Drill Bit, 1 x Arbor Adapter		5706915078114	-	1
1768698	26 pcs Big Daddy™ Hole Saw Kit: 19, 22, 25, 29, 35, 38, 44, 51, 54, 57, 64, 68, 76, 83, 86, 92, 95, 105, 114, 121mm, Arbors: 1L, 2L, 5L, 2 x 4321 Pilot Drill Bits, 1 x 56PD Pilot Drill Bit		5706915078121	-	1
1768793	9 pcs General Purpose Hole Saw Kit: 22, 25, 32, 35, 38, 44, 54mm, Arbors: 5L, 6L		5706915078138	-	1
1768794	10 pcs Plumber's Hole Saw Kit: 19, 22, 29, 38, 44, 57mm Arbors: 2L, 5L, 1 x 4321 Pilot Drill Bit, 1 x Arbor Adapter		5706915078145	-	1
1768795	17 pcs General Purpose Hole Saw Kit: 16, 19, 22, 25, 29, 32, 35, 38, 44, 51, 64, 76mm, Arbors: 1L, 2L, 3 x 4321 Pilot Drill Bits		5706915078152	-	1



DIAMOND™

The complete solution for cutting holes in porcelain, ceramics, granite, marble, glass, slate, fiberglass, travertine, cement board



Note: Each LENOX DIAMOND™ Holesaw shelf pack contains a carbide tipped pilot drill bit and a hex key. Please read the usage instructions for high-quality cutting results.

LENOX DIAMOND™ Hole Saws

More Holes. Less Time

LONG LASTING

Brazed diamond edge for more holes in tile and stone

DURABLE

Robust design for greater durability in tough applications

FAST CUTTING

Cuts holes in less time than carbide grit or carbide tipped hole saws

EASIER PLUG REMOVAL

Round holes make removing plugs faster and easier

USE STANDARD ARBOR OR SNAP-BACK™ ARBOR



Item No.	Description	Fits Arbor No.	EAN	Master Pack	Min. Order Qty
10507823	DHS 19mm	1L, 4L or 5L	5706915078237	100	1
10507824	DHS 20mm	1L, 4L or 5L	5706915078244	100	1
10507825	DHS 22mm	1L, 4L or 5L	5706915078251	100	1
10507826	DHS 25mm	1L, 4L or 5L	5706915078268	100	1
10507827	DHS 29mm	1L, 4L or 5L	5706915078275	50	1
10507828	DHS 32mm	1L, 4L or 5L	5706915078282	50	1
10507829	DHS 35mm	2L, 3L or 6L	5706915078299	50	1
10507830	DHS 38mm	2L, 3L or 6L	5706915078305	50	1
10507831	DHS 44mm	2L, 3L, 6L or 7L	5706915078312	50	1
10507832	DHS 48mm	2L, 3L, 6L or 7L	5706915078329	50	1
10507833	DHS 51mm	2L, 3L, 6L or 7L	5706915078336	50	1
10507834	DHS 54mm	2L, 3L, 6L or 7L	5706915078343	50	1
10507835	DHS 57mm	2L, 3L, 6L or 7L	5706915078350	50	1
10507836	DHS 60mm	2L, 3L, 6L or 7L	5706915078367	50	1
10507837	DHS 64mm	2L, 3L, 6L or 7L	5706915078374	50	1
10507838	DHS 68mm	2L, 3L, 6L or 7L	5706915078381	50	1
10507839	DHS 76mm	2L, 3L, 6L or 7L	5706915078398	50	1
10507840	DHS 83mm	2L, 3L, 6L or 7L	5706915078404	20	1
10507841	DHS 102mm	2L, 3L, 6L or 7L	5706915078411	20	1
10507842	DHS 114mm	2L, 3L, 6L or 7L	5706915078428	20	1

Carbide Tipped Hole Saws

Item No.	Description	Fits Arbor No.	EAN	Master Pack	Min. Order Qty
3021111CT	11CT 17mm	1L, 4L or 5L	082472302110	10	1
3021212CT	12CT 19mm	1L, 4L or 5L	082472302127	10	1
3021414CT	14CT 22mm	1L, 4L or 5L	082472302141	10	1
3021616CT	16CT 25mm	1L, 4L or 5L	082472302165	10	1
3021818CT	18CT 29mm	1L, 4L or 5L	082472302189	10	1
3022020CT	20CT 32mm	2L, 3L or 6L	082472302202	10	1
3022222CT	22CT 35mm	2L, 3L or 6L	082472302226	10	1
3022424CT	24CT 38mm	2L, 3L, 6L or 7L	082472302240	10	1
3022626CT	26CT 41mm	2L, 3L, 6L or 7L	082472302264	10	1
3022828CT	28CT 44mm	2L, 3L, 6L or 7L	082472302288	10	1
3023232CT	32CT 51mm	2L, 3L, 6L or 7L	082472302325	5	1
3023434CT	34CT 54mm	2L, 3L, 6L or 7L	082472302349	5	1
3023636CT	36CT 57mm	2L, 3L, 6L or 7L	082472302363	5	1
3023838CT	38CT 60mm	2L, 3L, 6L or 7L	082472302387	5	1
3024040CT	40CT 64mm	2L, 3L, 6L or 7L	082472302400	5	1
3024141CT	41CT 65mm	2L, 3L, 6L or 7L	082472302417	5	1
3024242CT	42CT 67mm	2L, 3L, 6L or 7L	082472302424	5	1
3024343CT	43CT 68mm	2L, 3L, 6L or 7L	082472302431	5	1
3024848CT	48CT 76mm	2L, 3L, 6L or 7L	082472302486	5	1
3025252CT	52CT 83mm	2L, 3L, 6L or 7L	082472302523	5	1
3025454CT	54CT 86mm	2L, 3L, 6L or 7L	082472302547	5	1
3025656CT	56CT 89mm	2L, 3L, 6L or 7L	082472302561	5	1
3025858CT	58CT 92mm	2L, 3L, 6L or 7L	082472302585	-	1
3026060CT	60CT 95mm	2L, 3L, 6L or 7L	082472302608	-	1
3026464CT	64CT 102mm	2L, 3L, 6L or 7L	082472302646	-	1
3026666CT	66CT 105mm	2L, 3L, 6L or 7L	082472302660	-	1
3026868CT	68CT 108mm	2L, 3L, 6L or 7L	082472302684	-	1
3027272CT	72CT 114mm	2L, 3L, 6L or 7L	082472302721	-	1
3027676CT	76CT 121mm	2L, 3L, 6L or 7L	082472302769	-	1
3028080CT	80CT 127mm	2L, 3L, 6L or 7L	082472302806	-	1
3028888CT	88CT 140mm	2L, 3L, 6L or 7L	082472302882	-	1
3029696CT	96CT 152mm	2L, 3L, 6L or 7L	082472302967	-	1

Hole Saw Accessories & Parts

Item No.	Description	Chuck Size mm	Fits Arbor No.	EAN	Master Pack	Min. Order Qty
30297123CT	123CT Carbide Tip Pilot Drill	6	1L/2L/4L/7L	082472302974	250	1
3029865CTPD	65CTPD Carbide Tip Pilot Drill	6	3L/5L/6L/7L	082472302981	150	1
10507941	Pilot Drill Bit Diamond Hole Saw	6	1L/2L/3L/4L/5L/6L/7L	5706915079418	250	1
1779771	4321 Pilot Drill, long 10,7cm	6	1L/2L/4L	885363004663	250	1
1779810	56PD Pilot Drill, short 8,2cm	6	3L/5L/6L/7L	885363004823	250	1
3084310X	250mm Extension	10 +	5L/6L/7L	082472308433	20	1
3084712X	300mm Extension	13 +	1L/2L/3L	082472308471	20	1
3084818X	450mm Extension	13 +	1L/2L/3L	082472308488	20	1
30857AA1	Arbor Adaptor*	-	1L/4L/5L	082472308570	100	1

Long tool life: Heat-resistant carbide teeth for long life in tile and stainless steel

Added durability: Thick backing plate resists damage and increases life

Unique tooth configuration: Engineered design provides ability to cut stainless steel like no other

Use standard or SNAP-BACK arbor

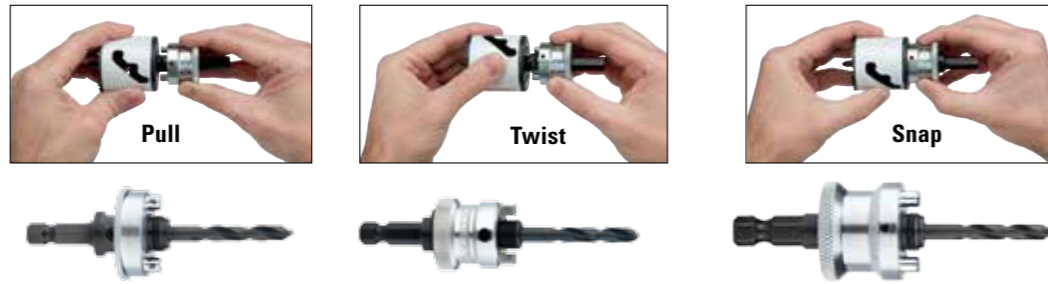
Note: We recommend the use of a carbide tipped pilot drill when cutting ceramic wall tile. Pilot drill 123CT fits the 1L, 2L, 4L or 7L arbors. Pilot drill 65CTPD fits the 5L and 6L arbors



* Arbor Adaptor: To fit 32mm and bigger hole saws onto 1L, 4L and 5L (Standard & SNAP-BACK™) arbors



SNAP-BACK™ Quick-Change Arbors



Item No.	Description	Fits Hole Saw Diameters	Shank Size mm	EAN	Master Pack	Min. Order Qty
1768811	Snap-Back 2L Quick-Change Arbor	32 - 210mm	12.7 & larger	5706915077667	-	1
1768812	Snap-Back 5L Quick-Change Arbor	14 - 30mm	9.5 & larger	5706915077674	-	1
1768813	Snap-Back 6L Quick-Change Arbor	32 - 210mm	9.5 & larger	5706915077681	-	1

Standard Hole Saw Arbors



Item No.	Description	Fits Hole Saw Diameters	Shank Size mm	EAN	Master Pack	Min. Order Qty
1779774	1L Hex	14 - 30mm	12.7 & larger	885363004755	90	1
1779801	2L Hex	32 - 210mm	12.7 & larger	885363004762	90	1
1779802	3L Solid / Hex	32 - 210mm	12.7 & larger	885363004779	54	1
1779803	4L 3-Sided	14 - 30mm	6.4 & larger	885363004786	90	1
1779804	5L Hex	14 - 30mm	9.5 & larger	885363004793	90	1
1779805	6L Hex	30 - 210mm	9.5 & larger	885363004809	90	1
1779806	7L Hex	38 - 210mm	9.5 & larger	885363004816	65	1

Added durability: Hardened carbon steel for strength through the cross-section
Starts on contact: Split-point pilot drill bit for faster penetration and less walking
Simple plug ejection: 7L arbor is designed with sliding pins to easily eject plugs from hole saws

PROTOOL LUBE™



A unique synthetic blend designed to increase tool life: When cutting, milling, reaming, tapping and drilling metal, wood and plastics
Shortens cutting time by up to 50%: Provides smoother, cleaner cutting and dramatically longer blade life
Reduces heat and friction: Water-soluble, so it cleans up with water. Bio-degradable and non-toxic

Item No.	Description	EAN	Master Pack	Min. Order Qty
68040LNX	ProTool Lube™ 0,17 litre, 12 pcs. in Display, English	082472680409	-	12
68047	ProTool Lube™ 3,8 litre English	082472680478	-	1
68081	ProTool Lube™ 0,17 litre Italian / Spanish	082472680812	-	12
68082	ProTool Lube™ 0,17 litre French	082472680829	-	12
68083	ProTool Lube™ 0,17 litre Portuguese	082472680836	-	12
68084	ProTool Lube™ 0,17 litre Swedish	082472680843	-	12

Hole Saw Selection Guide

	WOOD	NAIL-EMBEDDED WOOD	NON-FERROUS	PLASTICS & COMPOSITES	METAL	STAINLESS STEEL	DRYWALL & PLASTER	CAST IRON	CEMENT BOARD	ABRASIVES	TILE	STONE
BEST	CARBIDE TIPPED								DIAMOND			
	BI-METAL								BI-METAL		CARBIDE TIPPED	

Recommended Hole Saw RPM

Bi-Metal

Diameter mm	Mild Steel	Tool & Stainless	Cast Iron	Brass	Alum
14	580	300	400	790	900
16	550	275	365	730	825
17	500	250	330	665	750
19	460	230	300	600	690
20	425	210	280	560	630
21	425	210	280	560	630
22	390	195	260	520	585
24	370	185	245	495	555
25	350	175	235	470	525
27	325	160	215	435	480
29	300	150	200	400	450
30	285	145	190	380	425
32	275	140	180	360	410
33	260	135	175	345	390
35	285	145	190	380	425
37	240	120	160	315	360
38	230	115	150	300	345
40	220	110	145	290	330
41	210	105	140	280	315
43	205	100	135	270	305
44	195	95	130	250	295
46	190	95	125	250	285
48	180	90	120	240	270
51	170	85	115	230	255
52	165	80	110	220	245
54	160	80	105	210	240
57	150	75	100	200	225

Diameter mm	Mild Steel	Tool & Stainless	Cast Iron	Brass	Alum
60	140	70	95	190	220
64	135	65	90	180	205
65	130	65	85	175	200
67	130	65	85	170	195
68	125	60	80	160	185
70	125	60	80	160	185
73	120	60	80	160	180
76	115	55	75	150	170
79	110	55	70	140	165
83	105	50	70	140	155
86	100	50	65	130	150
89	95	45	65	130	145
92	95	45	60	120	140
95	90	45	60	120	135
98	85	40	55	110	130
102	85	40	55	110	130
105	80	40	55	110	120
108	80	40	55	110	120
111	75	35	50	100	105
114	75	35	50	100	105
118	75	35	50	100	105
121	70	35	45	90	95
127	70	35	45	90	95
140	65	30	40	85	90
152	65	30	40	85	90



Recommended Hole Saw RPM

Diamond

Diameter mm	Ceramic Tiles, Fibreglass, Cement Board, Carbon Fibre, Slate, Granite, Marble	Glass
19-25	1500-2000	800-1200
29-44	1500-2000	500-900
48-57	1500-2000	400-800
60-76	1000-1500	200-600
83-114	600-1000	150-500

Recommended Hole Saw RPM

Carbide Tipped

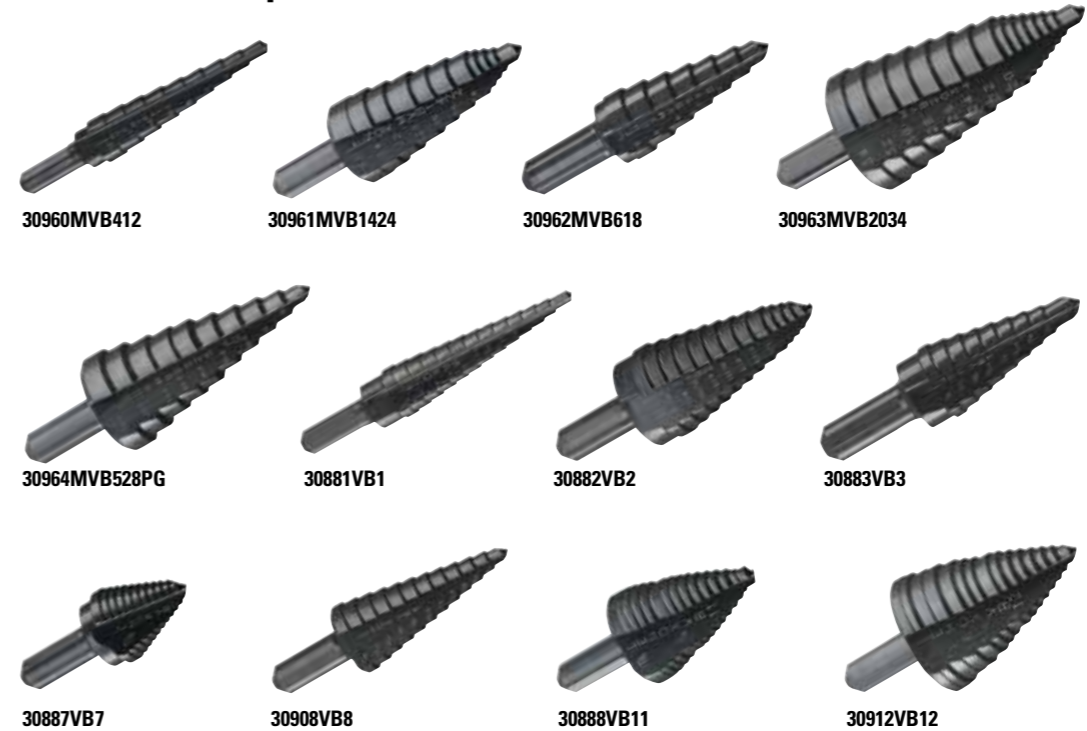


Diameter mm	Aluminium	Plastic	Fibreglass	Ceramic Tile	Particle Board	Cast Iron
17mm	1700	3430	250	500	3430	410
19mm	1700	3430	250	500	3430	410
22mm	1500	2940	210	430	2940	180
25mm	1300	2570	190	370	2570	150
29mm	1100	2290	170	330	2290	140
32mm	1100	1870	140	270	1870	110
35mm	900	1870	140	270	1870	110
38mm	900	1710	120	250	1710	100
41mm	700	1710	120	250	1710	100
44mm	700	1470	110	210	1470	90
51mm	600	1290	90	190	1290	80
54mm	600	1140	90	190	1140	80
57mm	600	1140	80	170	1140	70
60mm	500	1030	80	170	1030	70
64mm	500	1030	70	150	1030	60
65mm	500	1030	70	150	1030	60
67mm	400	860	70	150	860	60
68mm	400	860	70	120	860	50
76mm	400	860	60	120	860	50
83mm	400	790	60	110	790	50
86mm	400	790	60	110	790	50
89mm	400	790	60	110	790	40
92mm	400	710	50	100	710	40
95mm	300	690	50	100	690	40
102mm	300	650	50	90	650	40
105mm	300	620	50	90	620	40
108mm	300	600	40	90	600	40
114mm	300	560	40	80	560	30
121mm	300	540	40	80	540	30
127mm	200	480	40	80	500	30
140mm	200	420	40	70	460	30
152mm	100	360	30	60	420	30

Note: We recommend the use of a carbide tipped pilot drill when cutting ceramic wall tile.

Pilot drill 123CT fits the SNAP-BACK 2L or standard arbors 1L, 2L, 4L or 7L. Pilot drill 65CTPD fits the SNAP-BACK 2L or standard arbors 5L and 6L. See page 14.

Vari-Bit™ Step Drill Bits



Vari-Bit™ Step Drill Bits, Metric

Item No.	Description	Chuck Size	EAN	Master Pack	Min. Order Qty
30960MVB412	MVB412 9 steps 4, 5, 6, 7, 8, 9, 10, 11, 12mm	1/4" (6.35mm)	082472309607	-	1
30961MVB1424	MVB1424 7 steps 14, 16, 18, 20, 22, 24, 25mm	3/8" (9.5mm)	082472309614	-	1
30962MVB618	MVB618 7 steps 6, 8, 10, 12, 14, 16, 18mm	3/8" (9.5mm)	082472309621	-	1
30963MVB2034	MVB2034 8 steps 20, 22, 24, 26, 28, 30, 32, 34mm	3/8" (9.5mm)	082472309638	-	1
30964MVB528PG	MVB528PG 10 steps 5, 7.5, 10, 12.5, 15.2, 18.6, 20.4, 22.5, 25.5, 28.3mm	3/8" (9.5mm)	082472309645	-	1

Vari-Bit™ Step Drill Bits

Item No.	Description	Chuck Size	EAN	Master Pack	Min. Order Qty
30881VB1	VB1 13 steps 3, 4, 4.5, 5.5, 6, 7, 8, 8.5, 9.5, 10, 11, 12, 12.5mm	1/4" (6.35mm)	082472308815	-	1
30882VB2	VB2 9 steps 12.5, 14, 16, 17.5, 19, 20.5, 22, 23.5, 25mm	3/8" (9.5mm)	082472308822	-	1
30883VB3	VB3 9 steps 6, 8, 9.5, 11, 12.5, 14, 16, 17.5, 19mm	3/8" (9.5mm)	082472308839	-	1
30888VB11	VB11 2 steps 22, 28.5mm	3/8" (9.5mm)	082472308884	-	1
30912VB12	VB12 5 steps 22, 28.5, 31, 32, 35mm	3/8" (9.5mm)	082472309126	-	1

Accurate, burr-free holes: Two flute design cuts fast, clean, round holes
Starts on contact: Split-point design for faster penetration and less walking
Long tool life: Steam oxide coating adds durability. Enhanced flute design removes chips rapidly. Use of LENOX® PROTOOL LUBE recommended to extend tool life

Bi-Metal Jig Saw Blades

Ideal for Wood Working and Metal Cutting

Shatter resistant: Bi-Metal technology flexes and resists breaking and extends blade life



Smoother finish: Ground to precision sharpness for straighter cuts and a smoother finish

Greater precision: Super sharp to cut fast without deflection

PRECISION CUTTING

Super sharp to cut fast without deflection

SMOOTH FINISH

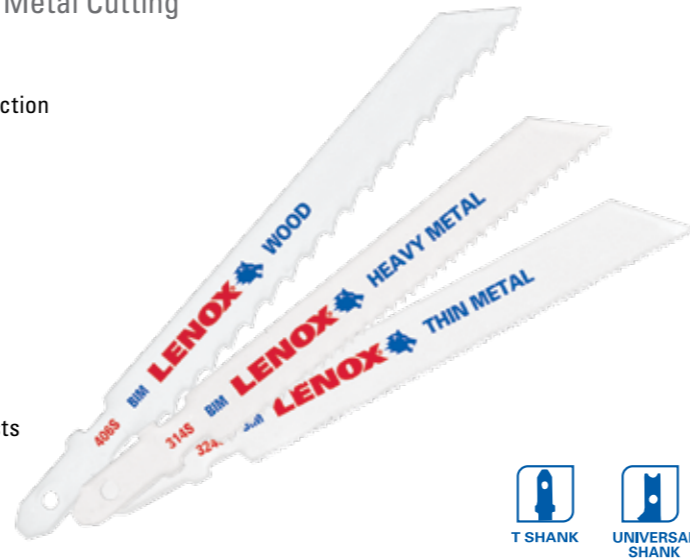
Ground to precision sharpness for straight cuts and a smooth finish

IDEAL FOR WOODWORKING

Designed for optimal performance in wood cutting, including hardwoods

SHATTER RESISTANT

Bi-Metal technology flexes and resists breaking and extends blade life



Bi-Metal T-Shank Jigsaw Blades



Item No.	Description	EAN	Master Pack	Min. Order Qty Blades/Pack*
20305BT406S	406S 100 x 10 x 1,3mm 6TPI, Wood Cutting	082472203059	250	2
20306BT410S	410S 100 x 10 x 1,3mm 10TPI, Wood Cutting	082472203066	250	2
20309BT686S	686S 150 x 10 x 1,3mm 6TPI, Wood Cutting	082472203097	250	2
20311BT320	320SC 92 x 5 x 1,3mm 20TPI, Wood Cutting Contour	082472203110	250	2
20313BT450	450S 100 x 8 x 1,3mm 10TPI, Wood Cutting	082472203134	250	2
20314BT450	450SR 100 x 8 x 1,3mm 10TPI, Wood Cutting, Reverse Tooth Setting	082472203141	250	2
20315BT456	456S 100 x 8 x 1,3mm 6TPI, Wood Cutting	082472203158	250	2
20301BT314S	314S 92 x 10 x 0,9mm 14TPI, Metal Cutting	082472203011	250	2
20302BT318S	318S 92 x 10 x 0,9mm 18TPI, Metal Cutting	082472203028	250	2
20303BT324S	324S 92 x 10 x 0,9mm 24TPI, Metal Cutting	082472203035	250	2
20308BT518S	518S 135 x 10 x 1,3mm 18TPI, Metal Cutting	082472203080	250	2
20803BT332S	332S 92 x 10 x 0,9mm 32TPI, Metal Cutting	082472208030	250	2
20812B406S	406S 100 x 10 x 1,3mm 6TPI, Wood Cutting	082472208122	500	25
20813B410S	410S 100 x 10 x 1,3mm 10TPI, Wood Cutting	082472208139	500	25
20814B450S	450S 100 x 8 x 1,3mm 10TPI, Wood Cutting	082472208146	500	25

*Items can only be ordered in multiples of the Min. Order Quantity

High Carbon Steel Jig Saw Blades

Ideal for Woodworking

PRECISION CUTTING

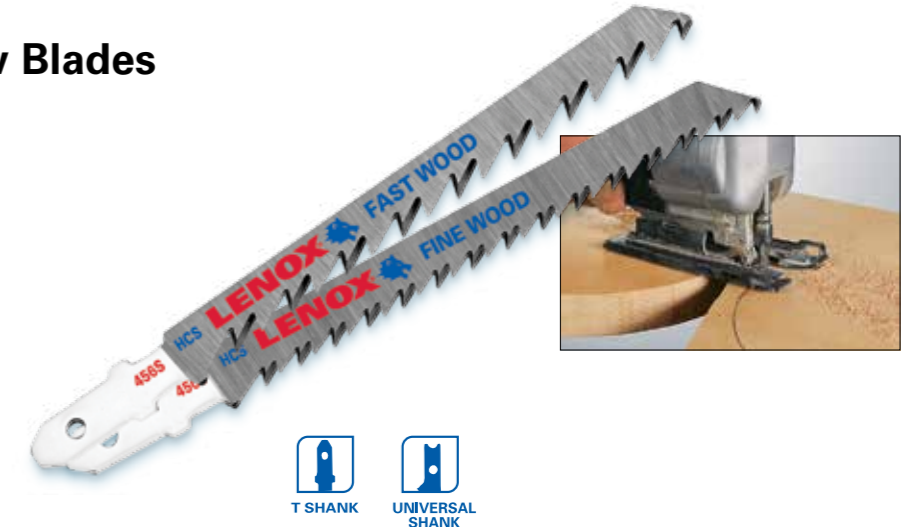
Super sharp to cut fast without deflection

SMOOTH FINISH

Ground to precision sharpness for straight cuts and a smooth finish

IDEAL FOR WOODWORKING

Designed for optimal performance in wood cutting, including hardwoods



Carbon T-Shank Jigsaw Blades for Wood Cutting



Item No.	Description	EAN	Master Pack	Min. Order Qty Blades/Pack*
20295CF450	CF450SR 100 x 10 x 1,5mm 10TPI, Wood Cutting, Reverse Tooth Setting	082472202953	500	5
20296CF450	CF450S 100 x 10 x 1,5mm 10TPI, Wood Cutting	082472202960	500	5
20298CFS406S	CFS406S 100 x 10 x 1,3mm 6TPI, Wood Cutting	082472202984	500	5
20312BT416	416SC 100 x 6 x 1,3mm 6TPI, Wood Cutting Contour	082472203127	250	2
20299CF320	CF320SC 92 x 6 x 1,3mm 20TPI, Wood Cutting Contour	082472202991	500	5

Jigsaw Kit

Item No.	Description	EAN	Master Pack	Min. Order Qty Blades/Pack*
1802081	Jigsaw Kit: 4x 406S, 4x 456S, 4x 450S, 2x 324S	885363006582	100	1

Carbide Grit T-Shank Jigsaw Blades



Item No.	Description	EAN	Master Pack	Min. Order Qty Blades/Pack*
20300GT300S	300S 75 x 8 x 0,8mm Abrasive cutting	082472203004	250	2

Longer lasting performance in abrasive materials: fiberglass, tile, brick

DIAMOND™ T-Shank Jigsaw Blades



Item No.	Description	EAN	Master Pack	Min. Order Qty Blades/Pack*
12149DG300S	300S 75 x 8 x 0,8mm Diamond Grit	082472121490	125	1

Diamond cutting edge lasts longer and cuts faster than Carbide Grit blades
Ideal solution for cutting hardest tiles

*Items can only be ordered in multiples of the Min. Order Quantity

Convenient blade storage: Safely fold blade into handle

Compact design: Fits easily into pocket or tool box

Replaceable blades: Uses any standard reciprocating saw blade

Rugged design: Heavy-duty aluminium handle has a comfortable hand grip

Multi-purpose: Push button design locks blade into three different positions for multiple cutting applications

Tri-Fold™ Saws

COMFORTABLE GRIP

Over-molded rubberized grip for a comfortable and secure grip while working

SECURELY HOLDS BLADE

Aluminum locking mechanism prevents blade from being removed during use

ACCOMMODATES HACKSAW BLADE

Ideal for flush cutting applications or when a hacksaw is not available

DIE CAST ALUMINUM CONSTRUCTION

NEW DRYWALL BLADE

Fleam Ground tooth form for fast, clean cuts in drywall
Ground tip to easily pierce drywall
Cuts both push and pull stroke



Item No.	Description	EAN	Master Pack	Min. Order Qty
20997EU	Tri-Fold™ Saw with two blades: Multi Material and Drywall blade	082472209976	5	5

HT50 High-Tension Hacksaw

HIGHEST TENSION. EVER

Unique I-beam construction allows blade to tension up to 50,000 psi, resulting in fast, straight cuts

COMFORTABLE GRIPS

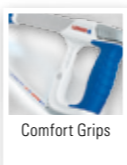
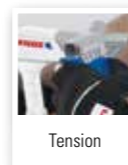
Rubberized handles allow for confident handling even in wet or cold environments

CONVERT TO A JAB SAW

Accepts any LENOX® Recip blade to be used as a jab saw

CONVENIENT BLADE STORAGE

Store up to 5 extra 12" hacksaw blades in the I-Beam



Item No.	Description	EAN	MasterPack	Min. Order Qty
10507542	HT50 high-tension Hacksaw, 300mm	5706915075427	5	5

88300 Lightweight Hacksaw

HIGH TENSION

Saw will tension up to 30,000 PSI

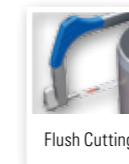
EASILY ADJUST TENSION

ERGONOMIC GRIP

Front handle grip reduces fatigue in continuous cutting applications

MULTI-PURPOSE

Mount blade at 45 degrees for flush cutting applications



Item No.	Description	EAN	Master Pack	Min. Order Qty
10507543	88300 Lightweight Hacksaw, 300mm	5706915075434	5	5



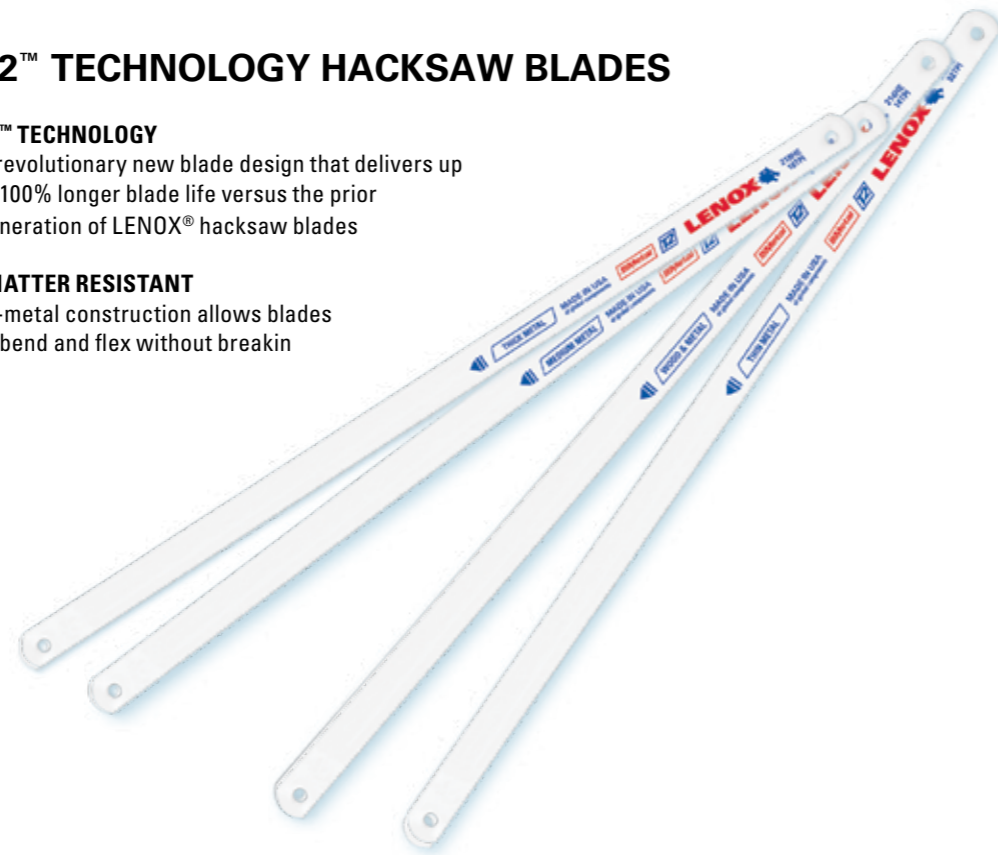
T2™ TECHNOLOGY HACKSAW BLADES

T2™ TECHNOLOGY

A revolutionary new blade design that delivers up to 100% longer blade life versus the prior generation of LENOX® hacksaw blades

SHATTER RESISTANT

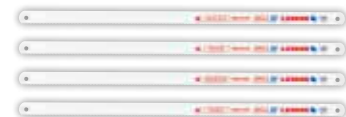
Bi-metal construction allows blades to bend and flex without breakin



Bi-Metal Hacksaw Blades

Item No.	Description	EAN	Master Pack	Min. Order Qty Blades/Pk*
20116218HE	218HE 300 x 13mm 18TPI	082472201161	5	100
20117224HE	224HE 300 x 13mm 24TPI	082472201178	5	100
20118232HE	232HE 300 x 13mm 32TPI	082472201185	5	100
20143V214HE	V214HE 300 x 13mm 14TPI	082472201437	50	10
20144V218HE	V218HE 300 x 13mm 18TPI	082472201444	50	10
20145V224HE	V224HE 300 x 13mm 24TPI	082472201451	50	10
20146V232HE	V232HE 300 x 13mm 32TPI	082472201468	50	10

Shatter resistant: Bi-Metal construction allows blades to bend and flex



*Items can only be ordered in multiples of the Min. Order Quantity

Close Quarter™ Saw & Mini Hacksaw Frame

RUGGED DESIGN

Heavy duty aluminum handle

FITS IN TIGHT SPOTS

Allows for flush cutting applications



Item No.	Description	EAN	Master Pack	Min. Order Qty
20975975	975 Hacksaw with 250mm bi-metal blade, also fits 300mm blades	082472209754	45	5

PVC/ABS Plastic Pipe Handsaw

CUTS PLASTIC PIPE EASILY

Cutting teeth cut on the pull stroke and not on the push stroke for safety

COMFORTABLE GRIPS

Rubberized handles allow for confident handling even in cold, hot, wet or dirty environments

FLUSH CUTTING OPTION

Easily mount the blade on the bottom of handle for flush cutting applications



Item No.	Description	EAN	Master Pack	Min. Order Qty
20985HSF12	300mm blade & handle, 10TPI	082472209853	-	5
20980HSF18	450mm blade & handle, 10TPI	082472209808	-	5
20982HSB12	300mm replacement blade, 10TPI	082472209822	50	5
20981HSB18	450mm replacement blade, 10TPI	082472209815	50	5

Breezes through material: Unique pull cutting teeth cut quickly through all plastic pipe and wood

Durable blade: Rigid carbon blade with hardened teeth for long life

Comfortable handle: Large opening for work gloves

Perfect cuts. Straight and easy.
Specifically designed jaw holds pipe in place while cutting with stainless steel blade

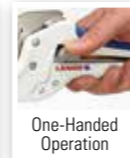
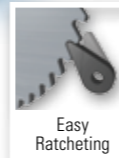
Comfortable grips
Rubberized handles allow for confident cutting even in wet or dirty environments

Easy open & close
Conveniently positioned release button allows for true one-handed operation of ratcheting cutter, while locking tab secures blade in place



The blade on the LENOX® Plastic Tubing Cutters is made with serrated stainless steel that requires 25% less cutting force than other cutters on the market; providing a straight, burr-free cut. The specifically designed jaw holds pipe in place while cutting with the serrated stainless steel blade.

R1 PVC Tube Cutter

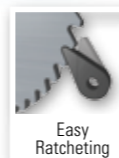


SPRING LIFE TESTING

Spring failure is typically catastrophic to a plastic tubing cutter tool. Rather than replacing the spring, a user typically replaces the tool itself. LENOX® performed tests on the Plastic Tubing Cutter spring testing rig to determine spring life. After 153,632 cycles, the cutters were removed from the rig. And after those 153,632 cycles, the springs still functioned perfectly. It would take an average user more than 10 years of consistent use to make that amount of cuts.

Item No.	Description	EAN	Master Pack	Min. Order Qty
10507481	R1 PVC Cutter, 42mm	5706915074819	10	1
10507533	R1B-PVC Replacement Blade	5706915075335	25	1

R2 PVC Tube Cutter



Item No.	Description	EAN	Master Pack	Min. Order Qty
10507482	R2 PVC Cutter, 60mm	5706915074826	-	1
10507534	R2B-PVC Replacement Blade	5706915075342	25	1

Cuts up to 1-1/4" nominal (1-5/8" Max. OD - 42mm)
For all types of plastic tubing like PVC, CPVC, PEX, PE & PB tubing, flexible hose

Perfect Cuts. Straight And Easy.
Specifically designed jaw holds pipe in place while cutting with high-carbon steel blade

One-Handed Ratcheting
One of the only large diameter cutters than can be ratcheted with just one hand

Easy Open
Pull both handles apart to quickly start the next cut

Cuts Up To 2" Nominal
(2-3/8" MAX. OD - 60mm)

For all types of plastic tubing like PVC, CPVC, PEX, PE & PB tubing, flexible hose

S1 PEX Tube Cutter



Item No.	Description	EAN	Master Pack	Min. Order Qty*
10507479	S1 PEX Cutter, 33mm	5706915074796	20	5
10507484	S1B-PEX Replacement Blade	5706915074840	25	1

S2 CPVC Tube Cutter



Item No.	Description	EAN	Master Pack	Min. Order Qty*
10507480	S2 CPVC Cutter, 33mm	5706915074802	20	5
10507532	S2B-CPVC Replacement Blade	5706915075328	25	1

*Items can only be ordered in multiples of the Min. Order Quantity



Perfect Cuts. Straight And Easy.
Serrated stainless steel blade requires less force to make a cut, leaving a flush end

Comfortable Grips
Rubberized handles allow for confident cutting even in wet or dirty environments

Easy Open & Close
Conveniently positioned locking latch allows for true one-handed operation of spring-loaded cutter

Cuts up to 1" nominal (1-5/16" max. OD - 33mm)
For all types of plastic tubing like PEX, PE & PB tubing, flexible hose.



Perfect Cuts. Straight And Easy.
High carbon steel blade cuts rigid plastic tubing with a single cut

Comfortable Grips
Rubberized handles allow for confident cutting even in wet or dirty environments

Durable Construction
Cast aluminum body stands up to rugged, repeated use

Easy Open & Close
Conveniently positioned locking latch allows for true one-handed operation of spring-loaded cutter.

Cuts up to 1" nominal (1-5/16" max. OD - 33mm)
For all types of plastic tubing like PVC, CPVC, PEX, PE & PB tubing, flexible hose

CU-INOX PRO Tube Cutter

The LENOX® Cu-INOX Pro Tube Cutters are heavy-duty, high precision tube cutters with telescopic action. With a zinc die-cast body and stainless steel rollers (4 rolls for better grip of the tube).

Material:

- Copper (Al + Cu for fast cuts) for max. tube wall thickness: 2mm
- INOX (Stainless Steel) for max. tube wall thickness: 2.5mm



WON'T WALK WHILE CUTTING

Four roller tracking system keeps tube from threading

PROFESSIONAL DEBURRING

Cleanly and easily deburr pipes with the replaceable machinist's reamer

WILL NOT DAMAGE CUTTING WHEELS

Full-stop feed system prevents wheels and rollers from coming into contact

EASY TO USE

Change out wheels quickly & easily

CONVENIENT STORAGE

Store an extra cutting wheel in the handle



The Multi 67 Tubing Cutter can be used on plastic tube and Multi-layer pipes up to 67mm as well as applicable for copper tubes and stainless steel pipes.



10507460

10507461



10507462



Item No.	Description	Cutting Size	EAN	Master Pack	Min. Order Qty
10507460	CU-INOX PRO 35	3-35mm	5706915075604	30	1
10507461	CU-INOX PRO 45	3-45mm	5706915075611	30	1
10507462	CU-INOX MULTI 67	6-67mm	5706915074628	15	1

Mini Tube Cutters

LENOX® Mini Tube Cutters are lightweight with an ergonomic knob and optimal tool size. The ideal solution for cutting tubes in difficult-to-access spaces.



10507457

10507458

10507459



Item No.	Description	Cutting Size	EAN	Master Pack	Min. Order Qty
10507457	CU-INOX MINI 16	3-16mm	5706915074574	60	1
10507458	CU-INOX MINI 25	3-25mm	5706915074581	60	1
10507459	CU-INOX MINI 30	3-30mm	5706915074598	60	1

LESS BURR. MORE CUTS.

Optimized blade geometry of shock-resistant steel

COMPACT DESIGN FOR TIGHT SPOTS

Non-slip grooved cast body only needs 1/2" clearance to cut

NO RUSTING

Stainless steel rollers protect the cutter from corrosion

QUICK IDENTIFICATION

Color coding for easy tool recognition and cutting direction

Close Quarter Tube Cutters

Single-action automatic tube cutting. These close quarter cutters are ideal for optimal accessibility in tight and confined spaces, even tight against a wall. Cuts copper with only a few turns. The cutter tightens onto the tube, cutting as you twist, without adjusting. Spare Wheels available.



Tightens onto the tube. Cutting as you twist, without adjusting

Item No.	Description	Cutting Size	EAN	Master Pack	Min. Order Qty*
10507464	CQ12	12mm	5706915074642	64	4
10507975	CQ14	14mm	5706915079753	64	4
10507465	CQ15	15mm	5706915074659	64	4
10507466	CQ16	16mm	5706915074666	64	4
10507467	CQ18	18mm	5706915074673	64	4
10507468	CQ22	22mm	5706915074680	64	4
10507469	CQ28	28mm	5706915074697	64	4

Spare Cutting Wheels, 4 Pack



Item No.	Description	Fits Cutter	EAN	Master Pack	Min. Order Qty Wheels / Pack*
10507470	Cu-AI WHEEL	Multi 67/ PRO/ MINI 30	5706915074703	-	4
10507471	PVC WHEEL	Multi 67	5706915074710	-	4
10507472	INOX WHEEL	Multi 67/ PRO/ MINI 30	5706915074727	-	4
10507473	CQ WHEEL	CQ12-28	5706915074734	-	4
10507967	Cu-AI / INOX WHEEL	MINI 16/MINI 25	5706915079678	-	4

*Items can only be ordered in multiples of the Min. Order Quantity

ITEM NO.	PAGE	ITEM NO.	PAGE	ITEM NO.	PAGE	ITEM NO.	PAGE	ITEM NO.	PAGE	ITEM NO.	PAGE
21060656GR	3	20597960R	5	3005858L	11	3026060CT	13	127mm	16	10507470	27
21062956GR	3	20372960R5	5	3006060L	11	3026464CT	13	140mm	16	10507471	27
21061156GR	3	205238966R	5	3006262L	11	3026666CT	13	152mm	16	10507472	27
21064610GR	3	2052489660R	5	3006464L	11	3026868CT	13	30960MVB412	17	10507473	27
21065810GR	3	20592650R	6	3006666L	11	3027272CT	13	30961MVB1424	17	10507967	27
21066414GR	3	20374650R5	6	3006868L	11	3027676CT	13	30962MVB618	17		
21067614GR	3	20577850R	6	3007070L	11	3028080CT	13	30963MVB2034	17		
21068418GR	3	205158650R	6	3007272L	11	3028888CT	13	30964MVB528PG	17		
21069618GR	3	121439KPE	6	3007474L	11	3029696CT	13	30881VB1	17		
21070818GR	3	1214412RKD	6	3007676L	11	30297123CT	13	30882VB2	17		
21071424GR	3	1497913RKM	6	3008080L	11	3029865CTPD	13	30883VB3	17		
21072624GR	3	1498013RKW	6	1816243	11	10507941	13	30888VB11	17		
21073824GR	3	1073415RKG	6	3008888L	11	1779771	13	30912VB12	17		
210886066GR	3	10833800RDG	7	1816245	11	1779810	13	20305BT406S	18		
21089960GR	3	1766338	7	3009696L	11	3084310X	13	20306BT410S	18		
21090966GR	3	1766356	7	3106106L	11	3084712X	13	20309BT686S	18		
21091106GR	3	20505600RG	7	3112112L	11	3084818X	13	20311BT320	18		
210926108GR	3	20506100RG	7	3132132L	11	30857AA1	13	20313BT450	18		
210969108GR	3	20576800RG	7	1768436	11	1768811	14	20314BT450	18		
210936110GR	3	205956563RCT	7	1768556	11	1768812	14	20315BT456	18		
210979110GR	3	205966565RCT	7	1768559	11	1768813	14	20301BT314S	18		
2110012110GR	3	205998535RCT	7	1768662	11	1779774	14	20302BT318S	18		
210946114GR	3	21103235BLP	8	1768668	11	1779801	14	20303BT324S	18		
210989114GR	3	21104300BLP	8	1768695	11	1779802	14	20308BT518S	18		
2110112114GR	3	21105450BLP	8	1768696	11	1779803	14	20803BT332S	18		
210956118GR	3	21107300LC	8	1768698	11	1779804	14	20812B406S	18		
210999118GR	3	21108450LC	8	1768793	11	1779805	14	20813B410S	18		
2110212118GR	3	10729810RPC	8	1768794	11	1779806	14	20814B450S	18		
20550414R	4	107301010RPC	8	1768795	11	68040LNX	14	20295CF450	19		
20552418R	4	20427424T	8	10507823	12	68047	14	20296CF450	19		
20554424R	4	20428432T	8	10507824	12	68081	14	20298CF406S	19		
20575634R	4	300099L	10	10507825	12	082472680812	14	20312BT416	19		
20556676RC	4	3001010L	10	10507826	12	68082	14	20299CF320	19		
20560606R	4	3001111L	10	10507827	12	082472680829	14	1802081	19		
20572656R	4	3001212L	10	10507828	12	68083	14	20300GT300S	19		
20570636RP	4	3009820MMHS	10	10507829	12	082472680836	14	12149DG300S	19		
20582956R	4	3001313L	10	10507830	12	68084	14	20997EU	20		
20585156R	4	3001414L	10	10507831	12	082472680843	14	10507542	20		
20562610R	4	3001515L	10	10507832	12	19-25	16	10507543	21		
20580810R	4	3001616L	10	10507833	12	29-44	16	20116218HE	22		
20583110R	4	3001717L	10	10507834	12	48-57	16	20117224HE	22		
20564614R	4	3001818L	10	10507835	12	60-76	16	20118232HE	22		
21519814R	4	3001919L	10	10507836	12	83-114	16	20143V214HE	22		
20566618R	4	3002020L	10	10507837	12	17mm	16	20144V218HE	22		
20578818R	4	3002121L	10	10507838	12	19mm	16	20145V224HE	22		
21510118R	4	3002222L	10	10507839	12	22mm	16	20146V232HE	22		
20568624R	4	3002323L	10	10507840	12	25mm	16	20975975	23		
20579824R	4	3002424L	10	10507841	12	29mm	16	20985HSF12	23		
205308656R	4	3002525L	10	10507842	12	32mm	16	20980HSF18	23		
205588956R	4	3002626L	10	3021111CT	13	35mm	16	20982HSB12	23		
205908810R	4	3002727L	10	3021212CT	13	38mm	16	20981HSB18	23		
204938610R	4	3002828L	10	3021414CT	13	41mm	16	10507481	24		
204918110R	4	3002929L	10	3021616CT	13	44mm	16	10507533	24		
204948614R	4	3003030L	10	3021818CT	13	51mm	16	10507482	24		
205298618R	4	3003232L	10	3022020CT	13	54mm	16	10507434	24		
204878818R	4	3003333L	10	3022222CT	13	57mm	16	10507479	25		
215118118R	4	3003434L	10	3022424CT	13	60mm	16	10507484	25		
1769340	5	1816241	10	3022626CT	13	64mm	16	10507480	25		
1769341	5	3003636L	10	3022828CT	13	65mm	16	10507532	25		
201706110R	5	3003838L	10	3023232CT	13	67mm	16	10507460	26		
201726114R	5	1816242	11	3023434CT	13	68mm	16	10507461	26		
201746118R	5	3004040L	11	3023636CT	13	76mm	16	10507462	26		
201769110R	5	3004141L	11	3023838CT	13	83mm	16	10507457	27		
201789114R	5	3004242L	11	3024040CT	13	86mm	16	10507458	27		
201809118R	5	3004343L	11	3024141CT	13	89mm	16	10507459	27		
2018212110R	5	3004444L	11	3024242CT	13	92mm	16	10507464	27		
2018412114R	5	3004646L	11	3024343CT	13	95mm	16	10507975	27		
2019012118R	5	3004848L	11	3024848CT	13	102mm	16	10507465	27		
20185B12114R	5	3005050L	11	3025252CT	13	105mm	16	10507466	27		
20598966R	5	3005252L	11	3025454CT	13	108mm	16	10507467	27		
20371966R5	5	3005454L	11	3025656CT	13	114mm	16	10507468	27		
20500106R	5	3005656L	11	3025858CT	13	121mm	16	10507469	27		

België, Nederland en Luxemburg
Newell Rubbermaid bv
Edisonstraat 8
5051 DS Goirle - The Netherlands
Tel: Netherlands +31 (0)20 20 61 636
Fax: +32 (0)20 70 06 026

Poland & Eastern Europe
Newell Poland S.A.
Manieczki, ul. Wybickiego 2
63-112 Brodnica - Poland
Tel: +48 (0)61 28 14 200
Fax: +48 (0)61 28 20 524

France
Newell Rubbermaid
122, avenue du Général Leclerc
92100 Boulogne Billancourt
Tel: +33 (0) 1 57 32 35 72
Fax: +33 (0) 2 40 38 79 99

Deutschland, Schweiz und Österreich
Newell Rubbermaid
Messerschmittstrasse 7
80992 München - Germany
Tel: +49 (0)69 38 07 89 435
Fax: +49 (0)69 38 07 89 542

Italia
Newell Rubbermaid
Viale Edoardo Jenner 55
20159 Milano - Italy
Tel: +39 02 - 66 80 67 61
Fax: +39 02 - 66 80 03 83

Middle East & Africa
A Newell Rubbermaid Company
Dubai Airport Free Zone
West Wing, Building 6W
Block-B, Office 640, PO Box - 54554
Dubai - United Arab Emirates
Tel: +971-4-2923444
Fax: +971-4-2923437

Northern Europe
NWL Denmark Services A/S
Stamholmen 157, 3
2650 Hvidovre - Denmark
Danmark
Tel: +45 43 68 22 12
Fax: +45 43 68 22 13

Suomi
Tel: +358 972 51 92 52
Fax: +358 972 51 92 53

Sverige
Tel: +46 (0) 8-517 61 670
Fax: +46 (0) 8-517 61 671

Norge
Tel: +47 24 15 99 24
Fax: +47 24 15 99 25

España
NEWELL Iberia
Parque Empresarial Las Mercedes
C/ Campezo N° 1, Edificio 4
3ª planta derecha.
28022 Madrid - Spain
Tel: +34-91 354 48 00

UK
Newell Rubbermaid
Halifax Avenue, Fradley Park
Lichfield, Staffordshire WS13 8SS
Main Tel: +44 (0) 1543 44 70 01
Customer Service Tel: 0844 412 1190
Customer Service Fax: 0844 412 1184

Europe, Middle East and Africa
(EMEA) Headquarters
Newell Rubbermaid Europe Sarl
Chemin de Blandonnet 10
CH-1214 Vernier / Geneve
Switzerland
Tel: +41 (0) 22 419 00 00
Fax: +41 (0)22 419 01 92