

ILSCO Dual Rated Lay-In Ground Lug



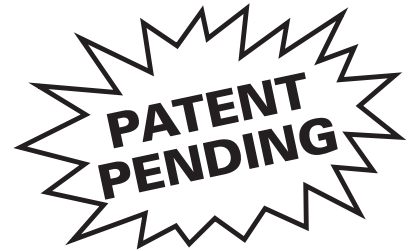
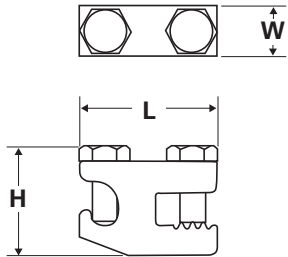
TYPE SGB

Features

- Manufactured from high strength 6061-T6 aluminum alloy
- Electro-tin plated
- Lay-in feature
- Stainless steel hardware
- Serrations in conductor wire way
- Unique clamp design
- 1/4" max frame thickness
- Meets ASTM B117-09

Benefits

- Suitable for use with either copper or aluminum conductors
- Provides low contact resistance
- Provides ease of installation
- For corrosion resistance, greater torque and ease of installation
- Cuts oxidation
- No holes to be drilled for mounting
- Mount to solar panel frames
- Resistance to outdoor salt spray



Catalog Number	Ground Wire Range	Dimensions		
		L	W	H
SGB-4	4-14	1.375	.500	1.080

All wire sizes, unless noted otherwise, are American Wire Gauge (AWG)
UL 467 for grounding and bonding.

UL File E34440

DE-OX Inhibitor is recommended for all aluminum terminations.



TYPE GBL

Features

- Manufactured from high strength 6061-T6 aluminum alloy
- Electro-tin plated
- Lay-in feature

Benefits

- Suitable for use with either copper or aluminum conductors
- Provides low contact resistance
- Provides ease of installation

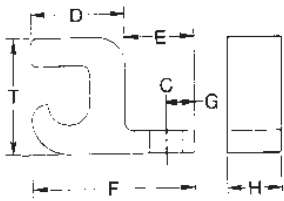


Fig. 1



Fig. 2

Catalog Number	Figure Number	Ground Wire Range	Bolt Size	Dimensions							Hex Size
				C	D	E	F	G	H	T	
*GBL-4	1	4-14	10	7/32	5/8	31/64	1-3/32	13/64	25/64	51/64	Slot
+GBL-4SS	1	4-14	10	7/32	5/8	31/64	1-3/32	13/64	25/64	51/64	Slot
GBL-1/0	1	1/0-14	1/4	9/32	51/64	27/32	1-5/8	7/16	5/8	1-5/32	Slot
GBL-250	2	250kcmil-6	1/4	9/32	31/64	1	2-3/16	29/64	7/8	1-23/32	7/32

All wire sizes, unless noted otherwise, are American Wire Gauge (AWG)

UL File E34440

* UL 467 and UL 486A/B Listed

+ UL 467 Listed

+ Supplied with stainless steel hardware. Meets ASTM B117-09 and is resistant to outdoor salt spray.

DE-OX Inhibitor is recommended for all aluminum terminations.

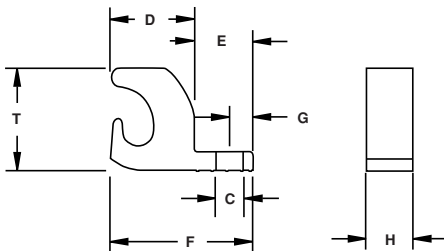
TYPE GBL-DB

Features

- Lay-in feature
- Manufactured from high strength copper
- Stainless steel 1/4-28 torque screw

Benefits

- Provides ease of installation of continuous loop grounding conductor
- Suitable for direct burial and for use with copper conductors
- Resists oxidation and corrosion in earth or concrete



Catalog Number	Ground Wire Range	Bolt Size	Dimensions							Screw Type
			C	D	E	F	G	H	T	
GBL-4DB	4-14	10	.218	.680	.470	1.15	.19	.375	.825	Slot
GBL-4DB-14	4-14	1/4	.265	.680	.470	1.150	.210	.472	.825	Slot
GBL-4DBT*	4-14	10	.218	.680	.470	1.15	.19	.375	.825	Slot
GBL-4DBT-14*	4-14	1/4	.265	.680	.470	1.150	.210	.472	.825	Slot

All wire sizes, unless noted otherwise, are American Wire Gauge (AWG)

Tested to UL 467, UL File E34440

* T indicates tin plating