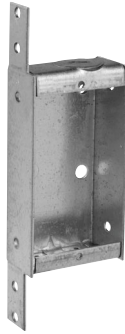


Steel Switch Boxes

1" DEEP – NON-GANGABLE – 6.5 CUBIC INCH CAPACITY

1¹⁵/₁₆" WIDE x 3³/₄" LONG



TP101



TP103

Cat. #	Bracket	Plastic Clamp	Knockouts		Unit Qty.	Wt. Lbs. Per 100
			Conduit	Cable		
TP101	"S"	No	1 - 1/2"	2	25	38
TP103	"S"	Yes	1 - 1/2"	2	25	39

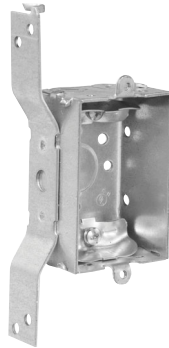
1 1/2" DEEP – NON-GANGABLE – 7.5 CUBIC INCH CAPACITY

2" WIDE x 3" LONG

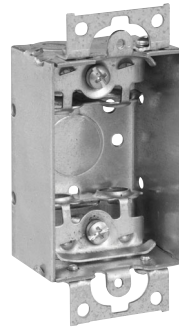
UL LISTED



TP100



TP104



TP106



TP114

Cat. #	Bracket	Ears	Knockouts			Unit Qty.	Wt. Lbs. Per 100
			Each End	Each Side	Bottom		
For Non-metallic Cable – Clamps in Each End							
TP100	-	Yes	2 - Cable	-	1 - 1/2"	50	43
TP104	"S", Set 1/2"	-	2 - Cable	-	1 - 1/2"	50	50
For Armoured & Metal-clad (MCI) Cable – Clamps in Each End							
TP106*	-	Yes	2 - Cable	-	1 - 1/2"	50	44
For Conduit – No Clamps, Flush Device							
TP114	-	Yes	1 - 1/2"	-	1 - 1/2"	50	39

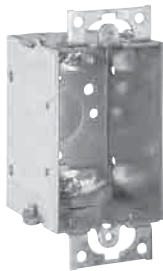
*UL approved for use with aluminum interlocking grounding metal-clad cable, Type MCIA (Southwire MCAP™). MCAP™ is a registered trademark of Southwire Company.

Steel Switch Boxes

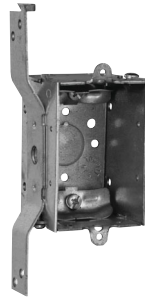
2" DEEP – GANGABLE – 10.0 CUBIC INCH CAPACITY

2" WIDE x 3" LONG

UL LISTED



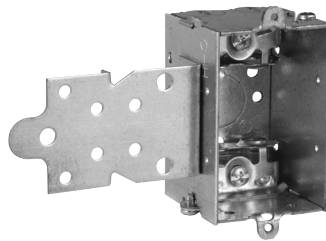
TP116



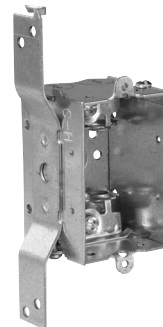
TP118



TP120



TP123



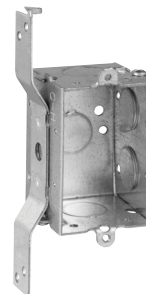
TP124



TP126



TP130



TP132



TP131 Hold-Tite

Steel Boxes

Cat. #	Bracket	Ears	Knockouts			Unit Qty.	Wt. Lbs. Per 100
			Each End	Each Side	Bottom		
For Non-metallic Cable – Clamps in Each End							
TP116	-	Yes	2 - Cable	-	1 - 1/2"	50	53
TP118	"S", Set 5/8"	-	2 - Cable	-	1 - 1/2"	50	60
For Armoured & Metal-clad (MCI) Cable – Clamps in Each End							
TP120*	-	Yes	2 - Cable	-	1 - 1/2"	50	54
TP123*	"F", Set 1/2"	-	2 - Cable	-	1 - 1/2"	50	63
TP124*	"S", Set 5/8"	-	2 - Cable	-	1 - 1/2"	50	61
For Conduit – No Clamps, Flush Device							
TP126	-	-	1 - 1/2"	2 - 1/2"	1 - 1/2"	50	47
TP130	-	Yes	1 - 1/2"	2 - 1/2"	1 - 1/2"	50	48
TP132	"S", Set 5/8"	-	1 - 1/2"	2 - 1/2", 1 Side	1 - 1/2"	50	58
TP131	Hold-Tite	Yes	1 - 1/2" - T	-	1 - 1/2"	50	52

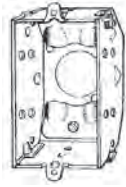
*UL approved for use with aluminum interlocking grounding metal-clad cable, Type MCIA (Southwire MCAP®). MCAP® is a registered trademark of Southwire Company.

Steel Switch Boxes

2¼" DEEP – GANGABLE – BEVELED CORNERS – 10.5 CUBIC INCH CAPACITY

2" WIDE x 3" LONG

UL LISTED



TP134



TP137 Hold-Tite



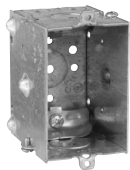
TP138

Cat. #	Description	Ears	Bumps	Knockouts			Unit Qty.	Wt. Lbs. Per 100
				Each End	Each Side	Bottom		
Clamp Screws Through Beveled Corners								
TP134	Gangable	-	Yes	2 - Cable	-	1 - ½"	50	51
TP137	Gangable	Yes	-	2 - Cable	-	1 - ½"	50	57
TP138	Gangable	Yes	-	2 - Cable	-	1 - ½"	50	55

2½" DEEP – GANGABLE – 12.5 CUBIC INCH CAPACITY

2" WIDE x 3" LONG

UL LISTED



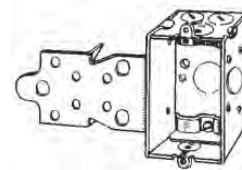
TP158



TP162



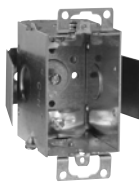
TP163



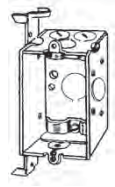
TP164, TP168



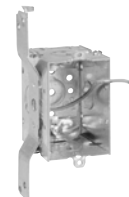
TP170



TP161



TP172



TP174



TP171

Cat. #	Bracket	Ears	Ground Pigtail	Leveling Bumps	Knockouts			Unit Qty.	Wt. Lbs. Per 100
					Each End	Each Side	Bottom		
For Non-metallic Cable – Clamps in Each End									
TP158	-	-	-	Yes	2 - Cable, 1 - ½"	-	1 - ½"	50	59
TP115*	-	Yes	Yes	-	2 - Cable	1 - ½"	1 - ½"	50	63
TP161	Snap-in	Yes	-	-	2 - Cable	1 - ½"	-	50	73
TP162	-	Yes	-	-	2 - Cable	1 - ½"	1 - ½"	50	62
TP163	Hold-Tite	Yes	-	-	2 - Cable	-	1 - ½"	50	65
TP164	"F", Set ½"	-	-	-	2 - Cable, 1 - ½"	1 - ½"	1 - ½"	50	71
TP168	"F", Set ¼"	-	-	-	2 - Cable, 1 - ½"	1 - ½"	1 - ½"	50	71
TP170	"S", Set ⅝"	-	-	-	2 - Cable, 1 - ½"	1 - ½"	1 - ½"	50	69
TP172	"D", Set ⅝"	-	-	-	2 - Cable, 1 - ½"	1 - ½"	1 - ½"	50	70
TP174	"D", Set ⅝"	-	Yes	-	2 - Cable, 1 - ½"	1 - ½"	1 - ½"	50	71
TP171	"VP", Set ½"	-	-	-	2 - Cable, 1 - ½"	1 - ½"	1 - ½"	50	73

*Not UL Listed.

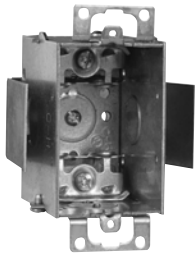
Steel Boxes

Steel Switch Boxes

2 1/2" DEEP – GANGABLE – 12.5 CUBIC INCH CAPACITY

2" WIDE x 3" LONG FOR ARMoured & METAL-CLAD (MCI) CABLE – CLAMPS IN EACH END

UL LISTED



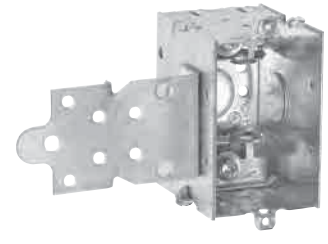
TP177



TP178



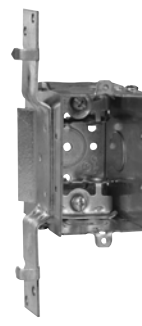
TP179 Hold-Tite



TP180



TP184



TP185

Cat. #	Bracket	Ears	Knockouts			Unit Qty.	Wt. Lbs. Per 100
			Each End	Each Side	Bottom		
TP177*	Snap-in	Yes	2 - Cable	1 - 1/2"	-	50	74
TP178*	-	Yes	2 - Cable	1 - 1/2"	1 - 1/2"	50	63
TP179*	Hold-Tite	Yes	2 - Cable	-	1 - 1/2"	50	66
TP180*	"F", Set 1/2"	-	2 - Cable, 1 - 1/2"	1 - 1/2"	1 - 1/2"	50	72
TP184*	"S", Set 5/8"	-	2 - Cable, 1 - 1/2"	1 - 1/2"	1 - 1/2"	50	70
TP185*	"VP", Set 1/2"	-	2 - Cable, 1 - 1/2"	1 - 1/2"	1 - 1/2"	50	74

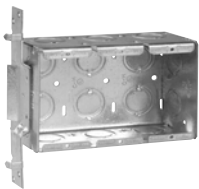
UL approved for use with aluminum interlocking grounding metal-clad cable, Type MCIA (Southwire MCAP). MCAP* is a registered trademark of Southwire Company.

Steel Boxes

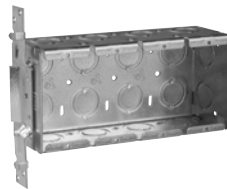
GANG BOXES SET BACK 1/2"

2 1/2" DEEP – 3 3/4" HIGH – 1/2" & 3/4" CONCENTRIC KOs

UL LISTED



TP632



TP633



TP637



TP638

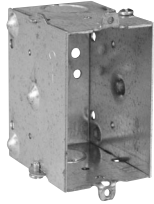
Cat. #	Gang	Bracket	Width	Knockouts			Capacity Cu. In.	Unit Qty.	Wt. Lbs. Per 100
				Each End	Each Side	Bottom			
TP632	3	VP	5 9/16"	2	3	6	46.5	5	143
TP633	4	VP	7 9/8"	2	4	8	62.0	5	179
TP637	3	VS	5 9/16"	2	3	6	46.5	5	143
TP638	4	VS	7 9/8"	2	4	8	62.0	5	179

Steel Switch Boxes

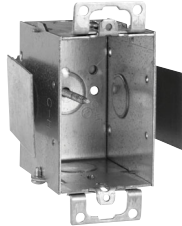
2½" DEEP – GANGABLE – 12.5 CUBIC INCH CAPACITY

**2" WIDE x 3" LONG
FOR CONDUIT – NO CLAMPS**

UL LISTED



TP214



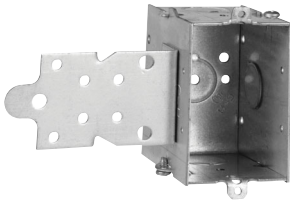
TP216



TP217



TP218



TP220



TP222



TP224

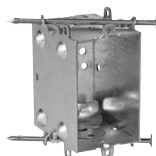
Cat. #	Bracket	Ears	Leveling Bumps	Knockouts			Unit Qty.	Wt. Lbs. Per 100
				Each End	Each Side	Bottom		
TP214	-	-	Yes	1 - ½"	-	1 - ½"	50	55
TP216	Snap-in	Yes	-	1 - ½"	1 - ½"	-	50	69
TP217	-	Yes	-	1 - ½"	-	1 - ½"	50	64
TP218	-	Yes	-	1 - ½"	1 - ½"	1 - ½"	50	58
TP220	"F", Set ½"	-	-	1 - ½"	1 - ½", 1 Side	1 - ½"	50	66
TP222	"S", Set ⅝"	-	-	1 - ½"	1 - ½", 1 Side	1 - ½"	50	65
TP224	Hold-Tite	Yes	-	1 - ½"	-	1 - ½"	50	61

Steel Switch Boxes

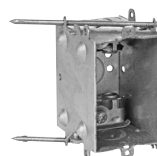
2½" DEEP SWITCH BOXES – "INSTANT ON" – 12.5 CUBIC INCH CAPACITY

2" WIDE x 3" LONG

WITH BUMPS – CLAMPS IN EACH END (BUMPS LEVEL THE BOX AGAINST THE SIDE OF STUD, TOP TO BOTTOM, FRONT TO BACK)



TP210



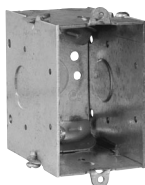
TP213

Cat. #	Clamps	Nails	Knockouts			Unit Qty.	Wt. Lbs. Per 100
			Each End	Each Side	Bottom		
TP210	NM Cable	Angle	2 - Cable, 1 - ½"	-	1 - ½"	50	66
TP213	Armoured Cable	Angle	2 - Cable, 1 - ½"	-	1 - ½"	50	66

2¾" DEEP – GANGABLE – 14.0 CUBIC INCH CAPACITY

2" WIDE x 3" LONG

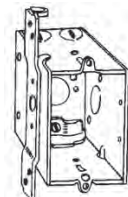
UL LISTED



TP660



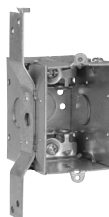
TP662



TP664



TP668



TP670

Cat. #	Bracket	Ears	Knockouts			Unit Qty.	Wt. Lbs. Per 100
			Each End	Each Side	Bottom		
For Non-metallic Cable – Clamps in Each End							
TP660	-	-	2 - Cable	1 - ½"	1 - ½"	50	62
TP662	-	Yes	2 - Cable	1 - ½"	1 - ½"	50	67
TP664	"S", Set ⅝"	-	2 - Cable	1 - ½"	1 - ½"	50	70
For Armoured & Metal-clad (MCI) Cable – Clamps in Each End							
TP668*	-	Yes	2 - Cable	1 - ½"	1 - ½"	50	68
TP670*	"S", Set ⅝"	-	2 - Cable	1 - ½"	1 - ½"	50	71

UL approved for use with aluminum interlocking grounding metal-clad cable, Type MCI (Southwire MCAP). MCAP™ is a registered trademark of Southwire Company.

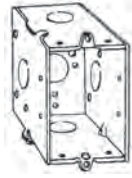
Steel Boxes

Steel Switch Boxes

2³/₄" DEEP – GANGABLE – 14.0 CUBIC INCH CAPACITY

2" WIDE x 3" LONG
FOR CONDUIT – NO CLAMPS

UL LISTED



TP672, TP674



(TP676 – 1 screw ear),
(TP678 – 2 screw ears)



TP680, TP677

Cat. #	Bracket	Ears	Knockouts			Unit Qty.	Wt. Lbs. Per 100
			Each End	Each Side	Bottom		
TP672	-	-	1 - 1/2"	1 - 1/2"	1 - 1/2"	50	59
TP674	-	-	1 - 3/4"	1 - 3/4"	1 - 1/2"	50	59
TP676	-	Yes	1 - 1/2"	1 - 1/2"	1 - 1/2"	50	61
TP678	-	Yes	1 - 3/4"	1 - 3/4"	1 - 1/2"	50	61
TP680	"S", Set 5/8"	-	1 - 1/2"	1 - 1/2", 1 Side	1 - 1/2"	50	70
TP677	"S", Set 5/8"	-	1 - 3/4"	1 - 3/4", 1 Side	1 - 1/2"	50	70

3¹/₂" DEEP – GANGABLE – 18.0 CUBIC INCH CAPACITY

2" WIDE x 3" LONG
FOR NON-METALLIC CABLE – CLAMPS IN EACH END

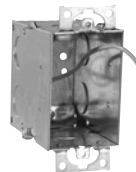
UL LISTED



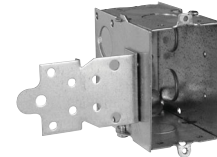
TP236



TP238



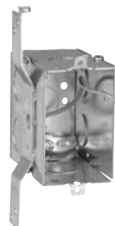
TP239



TP240



TP242



TP243

Cat. #	Bracket	Ground Pigtail	Ears	Knockouts			Unit Qty.	Wt. Lbs. Per 100
				Each End	Each Side	Bottom		
TP236	-	-	-	2 - Cable, 1 - 1/2"	2 - 1/2"	1 - 1/2"	25	78
TP238	-	-	Yes	2 - Cable, 1 - 1/2"	2 - 1/2"	1 - 1/2"	25	80
TP239	-	Yes	Yes	2 - Cable, 1 - 1/2"	2 - 1/2"	1 - 1/2"	25	81
TP240	"F", Set 1/2"	-	-	2 - Cable, 1 - 1/2"	2 - 1/2"	1 - 1/2"	25	88
TP242	"S", Set 7/8"	-	-	2 - Cable, 1 - 1/2"	2 - 1/2"	1 - 1/2"	25	87
TP243	"S", Set 7/8"	Yes	-	2 - Cable, 1 - 1/2"	2 - 1/2"	1 - 1/2"	25	88

Steel Switch Boxes

3 1/2" DEEP – GANGABLE – 18.0 CUBIC INCH CAPACITY

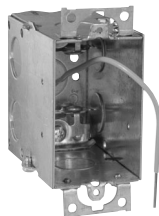
2" WIDE x 3" LONG

FOR ARMoured & METAL-CLAD (MCI) CABLE – CLAMPS IN EACH END

UL LISTED



TP244



TP249



TP246

Cat. #	Bracket	Ground Pigtail	Ears	Knockouts			Unit Qty.	Wt. Lbs. Per 100
				Each End	Each Side	Bottom		
TP244*	-	-	Yes	2 - Cable, 1 - 1/2"	2 - 1/2"	1 - 1/2"	25	81
TP249*	-	Yes	Yes	2 - Cable, 1 - 1/2"	2 - 1/2"	1 - 1/2"	25	82
TP246*	"S", Set 7/8"	-	-	2 - Cable, 1 - 1/2"	2 - 1/2"	1 - 1/2"	25	88

*UL approved for use with aluminum interlocking grounding metal-clad cable, Type MCI (Southwire MCAP™). MCAP™ is a registered trademark of Southwire Company.

3 1/2" DEEP – GANGABLE – 18.0 CUBIC INCH CAPACITY

2" WIDE x 3" LONG

FOR CONDUIT – NO CLAMPS

UL LISTED



TP248, TP250



TP252



TP254

Cat. #	Bracket	Ears	Knockouts			Unit Qty.	Wt. Lbs. Per 100
			Each End	Each Side	Bottom		
TP248	-	-	2 - 1/2"	2 - 1/2"	1 - 1/2"	25	74
TP250	-	-	2 - 3/4"	2 - 3/4"	1 - 1/2"	25	74
TP252	-	Yes	2 - 1/2"	2 - 1/2"	1 - 1/2"	25	76
TP254	-	Yes	2 - 3/4"	2 - 3/4"	1 - 1/2"	25	76

Steel Boxes

1 1/2" DEEP SWITCH & MASONRY BOX EXTENSION RING



TP422†

Cat. #	Knockouts		Unit Qty.	Wt. Lbs. Per 100
	Sides	Bottom		
1 1/2" Deep Switch & Masonry Box Extension Ring				
TP422†	8 - 1/2", 4 - 1/2" + 3/4" E	-	50	50

†For use as extension with switch box, not four square box. See page 181 for 4" steel square covers.