

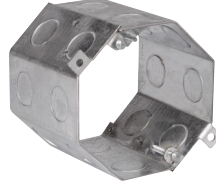
Steel specialty boxes

4" OCTAGON CONCRETE BOXES & HUNG CEILING BOXES

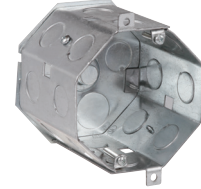
UL LISTED



TP620, TP622, TP628



TP635, TP636, TP644



TP623, TP624

Cat. #	Depth	Knockouts	Capacity cu. in.	Fan rated (weight lbs.)	Fixture rated (weight lbs.)	Unit qty.	Wt. lbs. per 100
TP620 ^M ⓪	2"	1/2" and 3/4" single row	23.0	No	50	25	60
TP622 ^M ⓪	2 1/2"	1/2" and 3/4" single row	29.0	No	50	25	72
TP628 ^M ⓪	3"	1/2" and 3/4" single row	35.0	No	50	20	85
TP634 ^C	3"	1" and 3/4" single row	30.3	No	50	20	77
TP635 ^M ⓪	3 1/2"	1/2" double row	43.0	No	50	20	93
TP636 ^M ⓪	3 1/2"	1/2" and 3/4" double row	43.0	No	50	20	93
TP639 ^C	3 1/2"	1" and 3/4" double row	41.0	No	50	20	89
TP642 ^C	4"	1" and 3/4" double row	47.0	No	50	20	106
TP644 ^M ⓪	4"	1/2" and 3/4" double row	47.0	No	50	20	113
Hung ceiling boxes (with TP650 cover)							
TP623 ^M ⓪	3 1/2"	1/2" double row	43.0	No	50	20	93
TP624 ^M ⓪	3 1/2"	1/2" and 3/4" double row	43.0	No	50	20	93

⓪ Not UL Listed for stackable use.
 Ⓞ Not UL Listed.

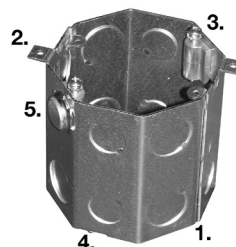
Steel specialty boxes

4" OCTAGON CONCRETE BOXES

UL LISTED



TP643



Applications:

- Used in poured deck applications
- Typical construction includes: high rises, apartments, condominiums and restaurants with outdoor dining areas
- Installed on wooden or steel forms and concrete poured around
- Upon removal of the forms, the box is flush with the concrete
- It is common, and continuing to become even more so, to have ceiling fans mounted to these boxes; because of the additional mounting support boss, this new box is suitable for use with fans of up to 70 pounds and fixtures up to 90 pounds

Features:

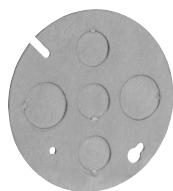
1. The TP643 fan rated concrete box is made from two-piece welded construction and is supplied with two rows of $\frac{1}{2}$ " and $\frac{3}{4}$ " dedicated KOs
2. The box is also supplied with two external mounting ears which are used to secure the box to the forms
3. The fan (or fixture) is held securely in place by the two 10-32 x $1\frac{1}{2}$ " long pan head screws and lock washers; the screws attach to the specially designed boss
4. There are two 8-32 x $\frac{1}{2}$ " screws provided for attachment of a box plate/cover (TP648, TP649 or TP650 – ordered separately)
5. Mounting support boss and locknuts allow the TP643 box to be used with fans of up to 70 pounds and fixtures up to 90 pounds

Cat. #	Depth	Knockouts	Capacity cu. in.	Fan rated (weight lbs.)	Fixture rated (weight lbs.)	Unit qty.	Wt. lbs. per 100
TP643	4"	$\frac{1}{2}$ " and $\frac{3}{4}$ "	46.0	70	90	20	102

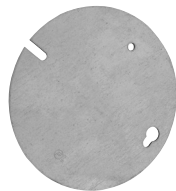
Ⓞ Not UL Listed for stackable use.

CONCRETE BOX PLATES

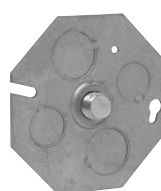
UL LISTED



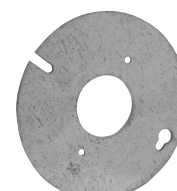
TP648



TP649



TP650



TP652

Cat. #	Description	Unit qty.	Wt. lbs. per 100
TP648	No stud, 3 - $\frac{1}{2}$ " and 2 - $\frac{3}{4}$ " KOs	50	28
TP649	Flat, blank	50	28
TP650	$\frac{3}{8}$ " stud, 2 - $\frac{1}{2}$ " and 2 - $\frac{3}{4}$ " KOs	50	33
TP652	Single receptacle	50	24

Steel boxes