

Lighting Contactors

CR360L

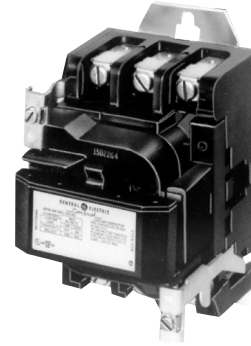
Electrically Held Contactors
 CR360L - 30A - 300A (2, 3 & 4 pole)

Application Information

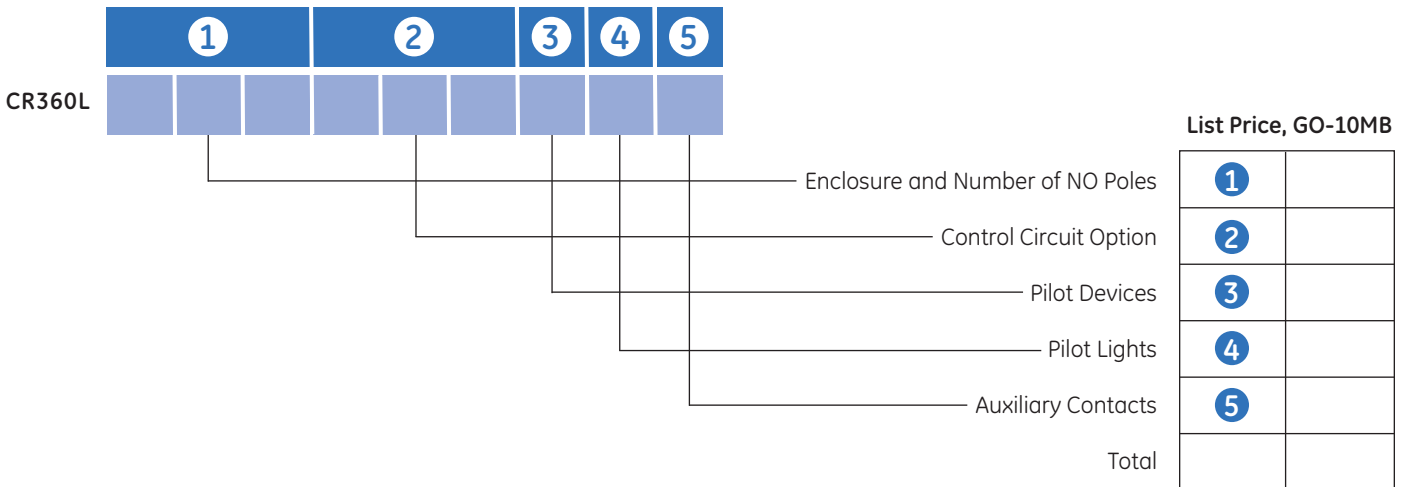
GE's CR360L series lighting contactors are electrically held, and offer solutions for applications between 30 and 300 amps. This is accomplished in five frame sizes, all built on the successful, and long established NEMA starters. The ratings are established for fluorescent, mercury arc, tungsten and sodium lamp loads, covering a wide spectrum of industrial and commercial applications.

The CR360L contactors offer a wide range of features that include:

- NEMA Type 1, Type 12, Type 3R, and Type 4 stainless steel enclosures
- A full selection of pilot devices, including pushbuttons, selector switches, and multi-colored indicating lights wired in needed configurations
- Main contactors with 2, 3 and 4 power poles
- Generous offering of auxiliary contacts
- Complete list of renewal parts for field installation
- Stock or quick delivery on the majority of products
- UL listing and CSA certification
- Order by complete product number
- Coils will be connected line-to-line unless otherwise specified
- Complete product number must contain 15 digits



Open 60-Amp Electrically Held Lighting Contactor



Lighting Contactors

CR360L

Electrically Held Contactors

CR360L - 30A - 300A (2, 3 & 4 pole)

1 Select Size, Number of Poles, and Enclosure

Open

Continuous Amp Rating	No. of Poles	Product Number
30A	2	CR360L302
30A	3	CR360L303
30A	4	CR360L304
60A	2	CR360L402
60A	3	CR360L403
60A	4	CR360L404
100A	2	CR360L502
100A	3	CR360L503
100A	4	CR360L504
200A	2	CR360L602
200A	3	CR360L603
200A	4	CR360L604
300A	2	CR360L702
300A	3	CR360L703
300A	4	CR360L704

Enclosed NEMA Type 1

Continuous Amp Rating	No. of Poles	Product Number
30A	2	CR360L312
30A	3	CR360L313
30A	4	CR360L314
60A	2	CR360L412
60A	3	CR360L413
60A	4	CR360L414
100A	2	CR360L512
100A	3	CR360L513
100A	4	CR360L514
200A	2	CR360L612
200A	3	CR360L613
200A	4	CR360L614
300A	2	CR360L712
300A	3	CR360L713
300A	4	CR360L714

Enclosed NEMA Type 12

Continuous Amp Rating	No. of Poles	Product Number
30A	2	CR360L322
30A	3	CR360L323
30A	4	CR360L324
60A	2	CR360L422
60A	3	CR360L423
60A	4	CR360L424
100A	2	CR360L522
100A	3	CR360L523
100A	4	CR360L524
200A	2	CR360L622
200A	3	CR360L623
200A	4	CR360L624
300A	2	CR360L722
300A	3	CR360L723
300A	4	CR360L724

Enclosed NEMA Type 3R

Continuous Amp Rating	No. of Poles	Product Number
30A	2	CR360L362
30A	3	CR360L363
30A	4	CR360L364
60A	2	CR360L462
60A	3	CR360L463
60A	4	CR360L464
100A	2	CR360L562
100A	3	CR360L563
100A	4	CR360L564
200A	2	CR360L662
200A	3	CR360L663
200A	4	CR360L664
300A	2	CR360L762
300A	3	CR360L763
300A	4	CR360L764

Enclosed NEMA Type 4, SS

Continuous Amp Rating	No. of Poles	Product Number
30A	2	CR360L342
30A	3	CR360L343
30A	4	CR360L344
60A	2	CR360L442
60A	3	CR360L443
60A	4	CR360L444
100A	2	CR360L542
100A	3	CR360L543
100A	4	CR360L544
200A	2	CR360L642
200A	3	CR360L643
200A	4	CR360L644
300A	2	CR360L742
300A	3	CR360L743
300A	4	CR360L744

Lighting Contactors

CR360L

Electrically Held Contactors
CR360L - 30A - 300A (2, 3 & 4 pole)

2 Select Coil Voltage and Control Circuit Type (Following available only with Enclosure)

Control Circuit Options	Continuous Ampere Rating										
	30A		60A		100A		200A		300A		
Coil Voltage	Product Number Digits	Product Number Digits	Product Number Digits	Product Number Digits	Product Number Digits	Product Number Digits	Product Number Digits	Product Number Digits	Product Number Digits	Product Number Digits	
None	24	24A	—	24A	—	24A	—	24A	—	24A	—
	120	02A	—	02A	—	02A	—	02A	—	02A	—
	208 ¹	23A	—	23A	—	23A	—	23A	—	23A	—
	240 ¹	03A	—	03A	—	03A	—	03A	—	03A	—
	277 ¹	13A	—	13A	—	13A	—	13A	—	13A	—
	480 ¹	04A	—	04A	—	04A	—	04A	—	04A	—
2 Control Circuit Fuses	24	24D	24D	24D	24D	24D	24D	24D	24D	24D	24D
	120	02D	2D	02D	02D	02D	02D	02D	02D	02D	02D
	208	23D	23D	23D	23D	23D	23D	23D	23D	23D	23D
	240	03D	03D	03D	03D	03D	03D	03D	03D	03D	03D
	277	13D	13D	13D	13D	13D	13D	13D	13D	13D	13D
	480	04D	04D	04D	04D	04D	04D	04D	04D	04D	04D
CPT Primary Volts											
CPT w/120V secondary, includes 2 primary, 1 secondary fuse	208	82T	82T	82T	62T	48T	40T	240	03T	03T	03T
	277	61T	61T	61T	61T	61T	61T	61T	61T	61T	61T
	480	04T	04T	04T	04T	04T	04T	04T	04T	04T	04T

¹Control circuit fuses required for 200 and 300 amp forms if pilot devices selected in steps 3 or 4.

3 Select Push Buttons or Selector Switch

Push Button, Selector Switch Options	NEMA Type 1 Only Standard-Duty		Any Enclosure Heavy-Duty	
	Product No. Digit	Product No. Digit	Product No. Digit	Product No. Digit
None	A	A	A	A
On-Off Push Button	C ²	K	K	K
Hand-Off-Auto Selector Switch	D	L	L	L
Off-On Selector Switch	E	M	M	M
Hand-Off-Auto Selector Switch With Key	—	N	N	N
On-Off-Auto Selector Switch	F	P	P	P

²Add holding interlock with this modification

4 Select Indicating Lights

Light Option	NEMA Type 1 Only Standard-Duty		Any Enclosure Heavy-Duty	
	Product No. Digit	Product No. Digit	Product No. Digit	Product No. Digit
None	A	A	A	A
Red Across Coil	B	J	J	J
Green Across Coil	—	K	K	K

5 Select Auxiliary Contacts

	Product Number Digit
None	Z
Holding Interlock	A
Holding Interlock Plus 1 NO	B
Holding Interlock Plus 1 NC	C
Holding Interlock Plus 1 NO, 1 NC	D
Holding Interlock Plus 2 NO	E
Holding Interlock Plus 2 NC	F
Holding Interlock Plus 2 NO, 1 NC	G

Lighting Contactors

CR360L

Electrically Held Contactors

CR360L - 30A - 300A (2, 3 & 4 pole)

Technical Data

For your convenience, examples of possible wiring schemes are provided on this page. Please review the ratings tables below and use the quick step-by-step selection guide provided, to choose the exact product required for your application.

Ratings

Open or enclosed ratings are 30-, 60-, 100-, 200-, and 300-ampere, ac full-load current.

Maximum AC Voltage Rating

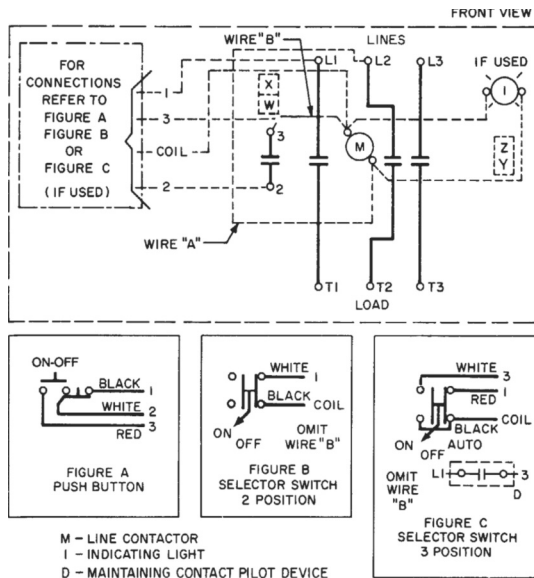
Lighting Load	Line	Load
Tungsten	480	480
Ballast: Fluorescent, Mercury, Sodium, e.g.	600	600

DC Tungsten Rating

Contactor Size, Continuous Ampere Rating	No. Poles in Series for:	
	125 V Maximum	250 V Maximum
30	2	3
60	2	4
100-300	2	2

Reference Publications

Instructions	CR360L Contactors
Continuous Ampere Rating	
30	GEH-5099
60	GEH-5100
100	GEH-5101
200	GEH-5102
300	GEH-5103



Typical Schematic Diagram for
CR360L Lighting Contactor