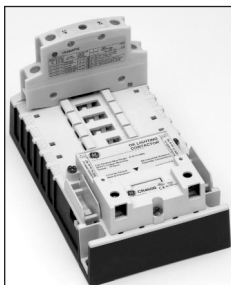




CR460 Series Lighting Contactors

The ultimate in versatility, simplicity and performance

Quick Selector



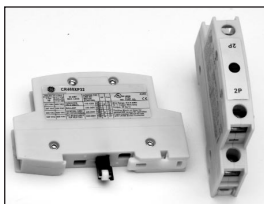
1. Choose Basic Contactor.

Combined with other appropriate components, basic contactors allow configuration into any available electrically or mechanically held model. Includes power poles.

Description	Cat. No.	List Price, GO-10MB
Base with 1NO-1NC	CR463L11A*A	\$165.00
Base with 2NO	CR463L20A*A	160.00

Coil Voltage – Replace * in base catalog number with appropriate coil digit from the table below.

	Coil Voltage		Coil Digit
	AC, 60 Hz	AC, 50 Hz	
Suitable for electrically or mechanically held contactors	24V	20V	C
	28V	24V	D
	115-120V	110V	J
	200-208V	—	L
	230-240V	220V	S
Suitable for electrically held contactors. CPT required if used with mechanically held contactors	277V	240V	N
	347V	—	T
	460-480V	440V	U
	575-600V	550V	Y



2. Select Power Poles.

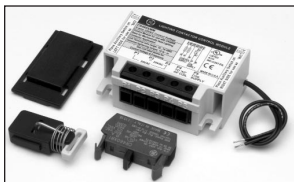
CR460 Series basic contactors accept up to 6 single- or double-pole power poles. These can be used to form up to:

- 12 NO poles when 6 double-poles are used in the NO positions (1-6) or
- 8 NC poles with 4 double-poles in the NC positions (1-4) + 4 NO poles with 2 double-poles in the 2 NO positions (5-6)

Power Poles	Cat. No.	List Price, GO-10MB
Single Pole	CR460XP31	\$43.00
Double Pole	CR460XP32	82.00

Packaged individually and overpacked in multiple of 5.

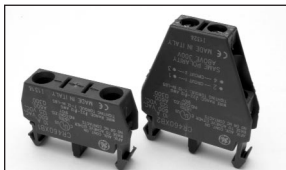
3. Select Conversion Kit (for Mechanically Held Contactors Only).



Kits for converting electrically held contactors to a mechanically held version. Kits includes control module, latch, latch cover and auxiliary contacts plus installation instructions. Conversion kits are suitable for coil voltages 277V and below. Use CPT to reduce coil voltage if line voltage is higher than 277V (see Fuse and Transformer Kits table).

Coil Volts	Control	Control Volts	Cat. No.	List Price, GO-10MB
24-277Vac	2-wire	24 Vac	CR460XMB	\$105.00
		110-120 Vac	CR460XMC	105.00
		200-277 Vac	CR460XMD	105.00
		12-24 Vdc	CR460XME	105.00
	3-wire	24 Vac	CR460XMM	115.00
		110-120 Vac	CR460XMN	115.00
		200-277 Vac	CR460XMP	115.00
		12-24 Vdc	CR460XMR	115.00

4. Do You Need Auxiliary Contacts?



Auxiliary Block	Cat. No.	List Price, GO-10MB
Single Pole	CR460XB1	\$9.00
Double Pole	CR460XB2	17.00

Each contactor may use one single or one double auxiliary contact block on each side of the base. When installed on the left side the contacts are NO, when installed on the right side the contacts are NC. This allows a total of 2NO + 2NC contacts maximum.

5. Do You Need an Enclosure?

Enclosure Type	With no CPT or pilot device		With provision for CPT and/or pilot device	
	Cat. No.	List Price, GO-10 MB	Cat. No.	List Price, GO-10 MB
1	CR460XE1B	\$43.00	CR460XE1D	\$83.00
Type 1, Flush Mount	CR460XE8B	80.00	—	—
12/3R	CR460XE2B	100.00	CR460XE2D	140.00
4	—	—	CR460XE4D	235.00

6. Do You Need Pilot Devices or Pilot Lights?

Enclosure accessory kits contain accessory and complete installation wiring and hardware. Some kits contain multiple nameplates for alternate markings.

Pilot Devices

Pilot Device	Application				Cat. No.	List Price, GO-10MB
	Electrically Held		Mechanically Held			
	Without Interlock Aux.	With Interlock Aux.	2-wire Control Module	3-wire Control Module		
ON/OFF Push Button (Momentary)		X		X	CR460XP1	\$122.00
ON/OFF or OFF/AUTO Selector Switch (Maintained)	X		X	X	CR460XP2	122.00
ON/OFF Selector Switch, Spring Return to Center		X		X	CR460XP3	122.00
H-O-A or ON/OFF/AUTO Selector Switch	X		X		CR460XP4	122.00
H-O-A or ON/OFF/AUTO Keyed Selector Switch (Removal All Positions)	X		X		CR460XP5	158.00

Pilot Lights

Pilot light kits come with interchangeable red and green lenses. Pilot lights may require auxiliary contacts.

Type	Nameplate	Cat. No.	List Price, GO-10MB
Standard	ON or OFF	CR460XLB*	\$152.00
Push-to-Test	ON or OFF	CR460XLD*	170.00

Pilot Light Voltage

Replace * in pilot light catalog number with appropriate voltage digit from the table below.

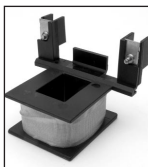
Voltage	Digit
24 Vac/dc	C
120 Vac	J
208 Vac	L
240 Vac	S
277 Vac	N
347 Vac	T
480 Vac	U
600 Vac	Y

7. Do You Need Fuses or CPTs?

Contactor Type	Kit	Cat. No.	List Price, GO-10MB	
Without CPT	Control Circuit Fuses Kit	CR460XF	\$155.00	
With 100VA CPT (includes 2 primary and 1 secondary fuse)	CPT Primary Volts (60Hz)			
	CPT Secondary Volts			
	208	120V	CR460XTB	\$347.00
	220-240 ^①		CR460XTC	347.00
	277		CR460XTD	347.00
	440-480		CR460XTE	347.00
	600	24V	CR460XTF	347.00
	120		CR460XTL	347.00
	208		CR460XTM	347.00
	220-240 ^①		CR460XTN	347.00
	277		CR460XTP	347.00
	440-480		CR460XTR	347.00
	600		CR460XTS	347.00

^① May be connected in the field for 440-480 volts, but will require two 0.5 amp primary fuses.

8. Order Spare Coils if required.



Coil Voltage	Cat. No.	List Price, GO-10MB	
			AC, 60 Hz
24V	20V	CR460XCC	\$45.00
28V	24V	CR460XCD	45.00
115-120V	110V	CR460XCJ	45.00
200-208V	—	CR460XCL	45.00
230-240V	220V	CR460XCS	45.00
277V	240V	CR460XCN	45.00
347V	—	CR460XCT	45.00
460-480V	440V	CR460XCU	45.00
575-600V	500V	CR460XCY	45.00



GE Industrial Systems

General Electric Company
41 Woodford Avenue, Plainville, CT 06062
www.GEindustrial.com

© 2002 General Electric Company