

Service Equipment



Technical Data

Service Equipment

MODEL NUMBER*	HUB OPENING	REPLACEMENT PARTS		CABINET SIZE	ENCLOSURE STYLE page 28	CABINET DIMENSIONS			KNOCKOUT FIGURE page 29	AIC
		METER SOCKET	POST LUGS			HEIGHT A	WIDTH B	DEPTH C		
M100C	Y	MSM100930	—	9 X 30	C	30"	9-3/4"	5-3/16"	3	10,000
M100T	Y	MSM100930	—	9 X 30	C	30"	9-3/4"	5-3/16"	3	10,000
M101C	Y	MSM100930	—	9 X 30	C	30"	9-3/4"	5-3/16"	3	10,000
M101CC	Y	MSM100930	—	9 X 30	C	30"	9-3/4"	5-3/16"	3	10,000
M101CB2	Y	MW200M	—	14 X 26	D	26-1/4"	14-1/4"	4-9/16"	6	10,000
M101CB6	Y	MSM100P9	LT100B350	9PT				See page 30		10,000
M101CB6HP	N	MSM100P9	LT200B350	9HP				See page 30		10,000
M101CP6	N	MSM100P9	LT100S250	9PT				See page 30		10,000
M101CP4	N	MSM100P9	LT100B250	*	*	*	*	*	*	10,000
M101CP6C	N	MSM100P9	LT200B350	9PT				See page 30		10,000
M101CP6HP	N	MSM100P9	LT100S350	9HP				See page 30		10,000
M101CP6HP010	N	MSM100P9	LT200S350	9HP				See page 30		10,000
M102CB2	Y	MW200M	—	14 X 26	D	26-1/4"	14-3/4"	4-9/16"	6	10,000
M102CB2010	Y	MW200M	—	14 X 26	D	26-1/4"	14-3/4"	4-9/16"	6	10,000
M102E	Y	MSM100930	—	9 X 30	C	30"	9-3/4"	5-3/16"	3	10,000
M181CB1	Y	MSMS1**	—	14 X 28	D	28-5/8"	14-3/8"	4-3/4"	6	22,000
M208CP6HP	N	MW200M	LT200S350	14HP				See page 30		10,000
M208CR2A	Y	MW200M	—	14 X 28	C	28-5/8"	14-3/8"	6-3/8"	8	10,000
M208CR2B010	Y	MW200M	—	14 X 38	C	38-3/8"	14-3/4"	6-3/8"	8	10,000
M254C	Y	MW200M	—	14 X 38	C	38	14-3/4"	6-3/8"	8	10,000
M254CP6	N	MW200M	LT200S350	14PT				See page 30		10,000
M255GP6	N	MW200M	LT200S350	14PT				See page 30		10,000
M280T	Y	MW200M	—	9 X 32	C	32-1/4"	9-3/4"	5-11/16"	4	10,000
M281C1	Y	MSMS	—	9 X 30	D	30-1/4"	9-5/16"	4-3/4"	12	22,000
M281C1B6H	N	MSMP	LT200B350	6H				See page 31		22,000
M281C1P6H	N	MSMP	LT200S350	6H				See page 31		22,000
M281C1P6H010	N	MSMP	LT200S350	6H				See page 31		22,000
M281C1S6H	N	MSMP	LT200SS	6H				See page 31		22,000
M281C1S6HC	N	MSMP	LT200SS	6H				See page 31		22,000
M281CB1	Y	MSMS1**	—	14 X 28	D	28-5/8"	14-3/8"	4-3/4"	13	22,000
M281E1B6H	N	MSMP	LT200B350	6H				See page 31		22,000
M281E1P6H	N	MSMP	LT200S350	6H				See page 31		22,000
M281EB1	Y	MSMS1**	—	14 X 28	D	30-1/4"	9-5/16"	4-3/4"	13	22,000
M282C1B6H	N	MSMP	LT200B350	6H				See page 31		22,000
M282C1C	Y	MSMS	—	9 X 30	D	30-1/4"	9-5/16"	4-3/4"	12	22,000
M282C1P6H	N	MSMP	LT200S350	6H				See page 31		22,000
M282C1P6H010	N	MSMP	LT200S350	6H				See page 31		22,000
M282C1P6HC	N	MSMP	LT200S350	6H				See page 31		22,000
M282C1S6H	N	MSMP	LT200SS	6H				See page 31		22,000
M282CB1	Y	MSMS	—	14 X 28	D	28-5/8"	14-3/8"	4-3/4"	13	22,000
M282CB1C	Y	MSMS	—	14 X 28	D	28-5/8"	14-3/8"	4-3/4"	13	22,000
M282E1B6H	N	MSMP	LT200B350	6H				See page 31		22,000
M282E1P6H	N	MSMP	LT200S350	6H				See page 31		22,000
M282E1P6H010	N	MSMP	LT200S350	6H				See page 31		22,000
M282EB1	Y	MSMS	—	14 X 28	D	28-5/8"	14-3/8"	4-3/4"	13	22,000
M285T	Y	MW200M	—	9 X 32	C	32-1/4"	9-3/4"	5-11/16"	4	10,000
M354C	Y	MSM100930	—	9 X 30	C	30"	9-3/4"	5-3/16"	1	10,000
M354CB6	N	MSM100P9	LT100B350	9PT				See page 30		10,000
M354CP6	N	MSM100P9	LT100S250	9PT				See page 30		10,000
M654CP6	N	MW200M	LT200S350	14PT				See page 30		10,000
M655GP6	N	MW200M	LT200S350	14PT				See page 30		10,000
MS125E	Y	MW200M	—	16 X 17	E	17-1/4"	16-3/4"	5"	9	10,000
MS150C	Y	MW200M	—	16 X 17	E	17-1/4"	16-3/4"	5"	9	10,000
MS151C	Y	MW200M	—	17 X 26	E	17-1/4"	16-3/4"	5"	9	10,000
MS250C	Y	198B8601G11	—	16 X 17	E	17-1/4"	16-3/4"	5"	9	10,000

* Not all models listed; contact local representative for other models and details.

** Models prior to April 2004 use MSMS

Technical Data

MODEL NUMBER*	HUB OPENING	REPLACEMENT PARTS		CABINET SIZE	ENCLOSURE STYLE page 28	CABINET DIMENSIONS			KNOCKOUT FIGURE page 29	AIC
		METER SOCKET	POST LUGS			HEIGHT	WIDTH	DEPTH		
						A	B	C		
MS251C	Y	MW200M	—	17 X 26	E	26-1/4"	17-1/2"	5-1/2"	10	10,000
MS252C	Y	MW200M	—	17 X 26	E	26-1/4"	17-1/2"	5-1/2"	10	10,000
MS252E014	Y	*	—	14 X 31	E	14-3/4"	31-5/16"	5-7/8"	7B	10,000
MS45500C	N	265A5264P2	—	31 X 33	E	33-1/10"	30-1/2"	6-1/10"	P. 32	22,000
MS45508C	N	265A5264P2	—	31 X 33	E	33-1/10"	30-1/2"	6-1/10"	P. 32	22,000
R100C	Y	MSR100930	—	9 X 30	C	30"	9-3/4"	5-3/16"	3	10,000
R100T	Y	MSR100930	—	9 X 30	C	30"	9-3/4"	5-3/16"	3	10,000
R101C	Y	MSR100P9	—	9 X 30	C	30"	9-3/4"	5-3/16"	3	10,000
R101CB2	Y	MW200R	—	14 X 26	D	26-1/4"	14-3/4"	4-9/16"	6	10,000
R101CB2LK	Y	MW200R	—	14 X 26	D	26-1/4"	14-3/4"	4-9/16"	6	10,000
R101CB2010	Y	MW200R	—	14 X 26	D	26-1/4"	14-3/4"	4-9/16"	6	10,000
R101CB6	N	MSR100P9	LT100B250	9PT			See page 30			10,000
R101CB6HP	N	MSR100P9	LT200B350	9HP			See page 30			10,000
R101CP6	N	MSR100P9	LT100S250	9PT			See page 30			10,000
R101CP6HP	N	MSR100P9	LT200S350	9HP			See page 30			10,000
R102CB2	Y	MW200R	—	14 X 26	D	26-1/4"	14-3/4"	4-9/16"	6	10,000
R102CB2LK	Y	MW200R	—	14 X 26	D	26-1/4"	14-3/4"	4-9/16"	6	10,000
R102E	Y	MSR100930	—	9 X 30	C	29-1/2"	9-1/4"	5-3/16"	1	10,000
R102EN	Y	MSR100930	—	9 X 30	C	29-1/2"	9-1/4"	5-3/16"	1	10,000
R181CB1	Y	MSRS	—	14 X 28	D	28-1/2"	14-3/10"	4-4/5"	6	10,000
R200T	Y	MW200R	—	14 X 38	C	38-3/8"	14-3/4"	6-3/8"	8	10,000
R208CP6HP	N	MW200R	LT200S350	14HP			See page 30			10,000
R208CR2A	Y	MW200R	—	14 X 28	C	28-5/8"	14-3/4"	6-3/8"	8	10,000
R208CR2A034	Y	265A5264P8	—	14 X 28	C	28-5/8"	14-3/4"	6-3/8"	8	10,000
R211CP6	N	MSRS	—	*			See page 30			10,000
R225CP6	N	MW200R	LT200S350	14PT						10,000
R2502CP6	N	MSRS	—	*	*	*	*	*	*	10,000
R256EB1A	Y	198B8601G70	—	14 X 26	D	26-1/4"	14-3/4"	4-9/16"	6	10,000
R256EB1018A	Y	198B8601G70	—	14 X 26	D	26-1/4"	14-3/4"	4-9/16"	6	10,000
R256EB1NA	Y	198B8601G70	—	14 X 26	D	26-1/4"	14-3/4"	4-9/16"	6	10,000
R280T	Y	MW200R	—	9 X 32	C	32-1/4"	9-3/4"	5-11/16"	4	10,000
R280TP6HP	N	MW200R	LT200S350	9HP			See page 30			10,000
R281C1	Y	MSRS	—	9 X 30	D	30-1/4"	9-5/16"	4-3/4"	12	22,000
R281C1034	Y	265A5264P8	—	14 X 32	D	32-1/2"	14-1/2"	5-7/16"	15	22,000
R281C1B6H	N	MSRP	LT200B350	6H			See page 31			22,000
R281C1B6H034	N	265A5264P8	LT200B350	6H034			See page 31			22,000
R281C1P6H	N	MSRP	LT200S350	6H			See page 31			22,000
R281C1P6H034	N	265A5264P8	LT200S350	6H034			See page 31			22,000
R281C1S6HC	N	MSRP	LT200SS	6H			See page 31			22,000
R281CB1	Y	MSRS	—	14 X 28	D	28-5/8"	14-3/8"	4-3/4"	13	22,000
R281CB1034	Y	265A5264P8	—	14 X 28	D	28-5/8"	14-3/8"	4-3/4"	13	22,000
R281CB1LK	Y	MSRS	—	14 X 28	D	28-5/8"	14-3/8"	4-3/4"	13	22,000
R281E1B6H	N	MSRP	LT200B350	6H			See page 31			22,000
R281E1B6H034	N	265A5264P8	LT200B350	6H034			See page 31			22,000
R281E1P6H	N	MSRP	LT200S350	6H			See page 31			22,000
R281E1P6H034	N	265A5264P8	LT200S350	6H034			See page 31			22,000
R281EB1	Y	MSRS	—	14 X 28	D	28-5/8"	14-3/8"	4-3/4"	13	22,000
R281EB1034	Y	265A5264P8	—	14 X 28	D	28-5/8"	14-3/8"	4-3/4"	13	22,000
R282C1B6H	N	MSRP	LT200B350	6H			See page 31			22,000
R282C1P6H	N	MSRP	LT200S350	6H			See page 31			22,000
R282CB1	Y	MSRS	—	14 X 28	D	28-5/8"	14-3/8"	4-3/4"	13	22,000
R282CB1LK	Y	MSRS	—	14 X 28	D	28-5/8"	14-3/8"	4-3/4"	13	22,000
R282E1B6H	N	MSRP	LT200B350	6H			See page 31			22,000
R282E1P6H	N	MSRP	LT200S350	6H			See page 31			22,000
R282EB1	Y	MSRS	—	14 X 28	D	28-5/8"	14-3/8"	4-3/4"	13	22,000
R460CP6034	N	265A5264P10	*	14PT			See page 30			22,000

* Not all models listed; contact local representative for other models and details.

Data subject to change without notice.

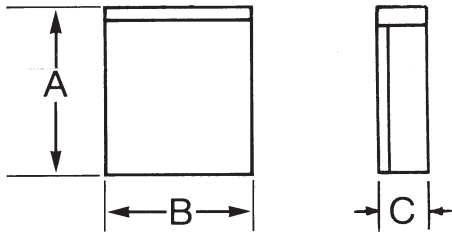
Technical Data

Service Equipment

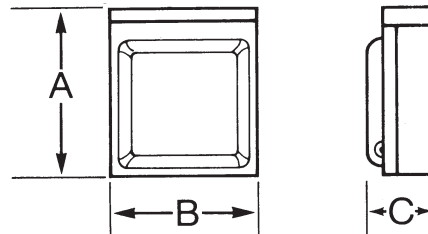
MODEL NUMBER*	HUB OPENING	REPLACEMENT PARTS		CABINET SIZE	ENCLOSURE STYLE page 28	CABINET DIMENSIONS			KNOCKOUT FIGURE page 29	AIC
		METER SOCKET	POST LUGS			HEIGHT	WIDTH	DEPTH		
						A	B	C		
R481C1P6H034	N	265A5264P8	LT200S350	6H034	See page 31					22,000
RS150C	Y	MW200R	---	17 X 26	E	26-1/4"	17-1/2"	5-1/2"	10	10,000
RS250C	Y	MW200R	---	17 X 26	E	26-1/4"	17-1/2"	5-1/2"	10	10,000
RS251C	Y	MW200R	---	17 X 26	E	26-1/4"	17-1/2"	5-1/2"	10	10,000
RS40000	N	265A5264P10	---	31 X 33	E	33-1/10"	30-1/2"	6-1/10"	P. 32	22,000
RS40008	N	265A5264P10	---	31 X 33	E	33-1/10"	30-1/2"	6-1/10"	P. 32	22,000
RS43300C	N	265A5264P10	---	31 X 33	E	33-1/10"	30-1/2"	6-1/10"	P. 32	22,000
RS43308C	N	265A5264P10	---	31 X 33	E	33-1/10"	30-1/2"	6-1/10"	P. 32	22,000
RS45500C	N	265A5264P10	---	31 X 33	E	33-1/10"	30-1/2"	6-1/10"	P. 32	22,000
RS45508C	N	265A5264P10	---	31 X 33	E	33-1/10"	30-1/2"	6-1/10"	P. 32	22,000
U101C	Y	---	---	9 X 17	B	17-3/8"	9-3/4"	5-3/16"	3	10,000
U101CP6	N	---	LT100S250	9PT	See page 30					10,000
U102E	Y	---	---	9 X 17	B	17-3/8"	9-3/4"	5-3/16"	3	10,000
U102EP6	N	---	LT100S250	9PT	See page 30					10,000
U180C1	Y	---	---	9 X 21	A	21-3/4"	9-5/16"	4-3/4"	11	22,000
U181C1	Y	---	---	9 X 21	A	21-3/4"	9-5/16"	4-3/4"	11	22,000
U208C	Y	---	---	14 X 21	B	21-3/8"	14-3/4"	6-7/16"	5	10,000
U208CP6HP	N	---	LT200S350	14HP	See page 30					10,000
U254C	Y	---	---	14 X 21	A	21-3/8"	14-3/4"	6-7/16"	*	10,000
U280C1	Y	---	---	9 X 21	A	21-3/4"	9-5/16"	4-3/4"	11	22,000
U281C1	Y	---	---	9 X 21	A	21-3/4"	9-5/16"	4-3/4"	11	22,000
U281C1P6H	Y	---	LT200S350	6H	See page 31					22,000
U281E1	Y	---	---	9 X 21	A	21-3/4"	9-5/16"	4-3/4"	11	22,000
U281E1P6H	Y	---	LT200S350	6H	See page 31					22,000
U354C	Y	---	---	9 X 17	B	17-3/8"	9-3/4"	5-3/16"	1	10,000
UL412RMW	Y	---	---	7 X 10	A	10"	7-1/4"	4"	2	10,000

* Not all models listed; contact local representative for other models and details.

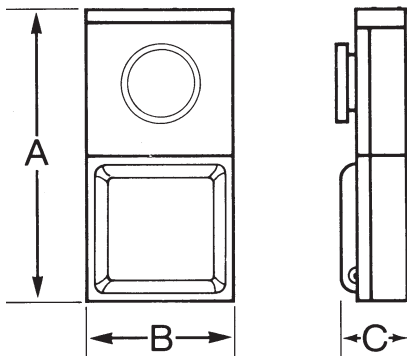
Cabinet Dimensions



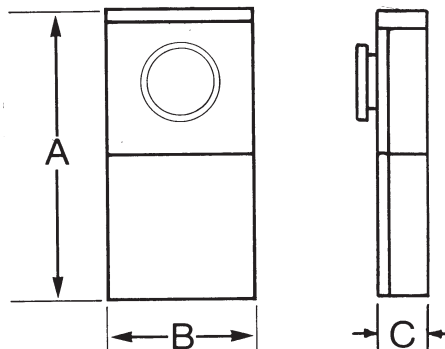
(Fig. A)



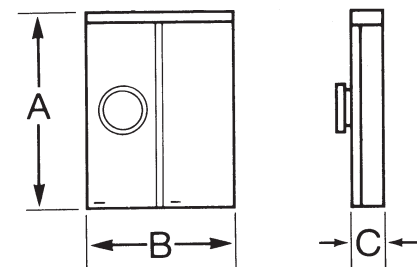
(Fig. B)



(Fig. C)

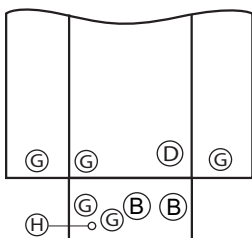


(Fig. D)

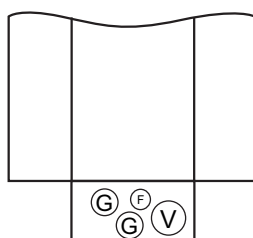


(Fig. E)

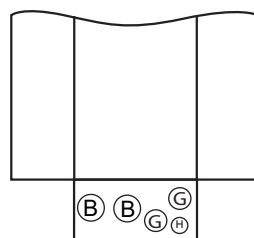
Knockout Configurations



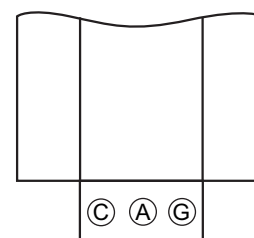
(Fig. 1)



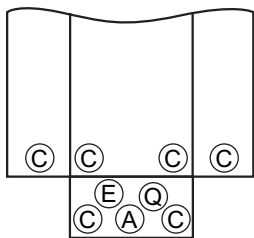
(Fig. 2)



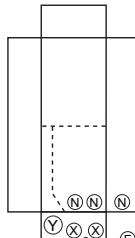
(Fig. 3)



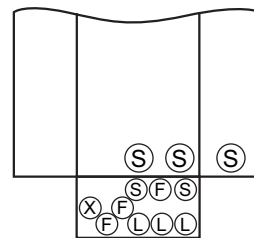
(Fig. 4)



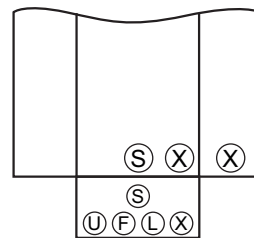
(Fig. 5)



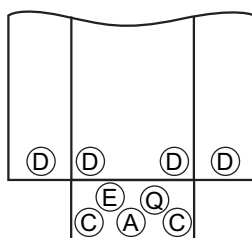
(Fig. 6)



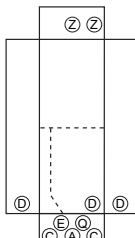
(Fig. 7A)



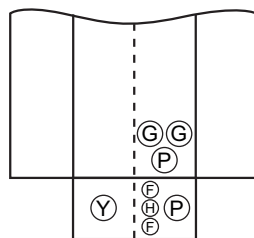
(Fig. 7B)



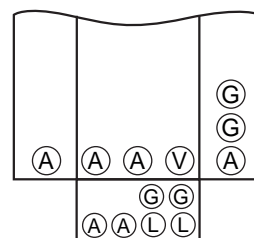
(Fig. 8)



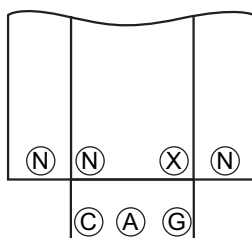
(Fig. 8A-R208CR2A Only)



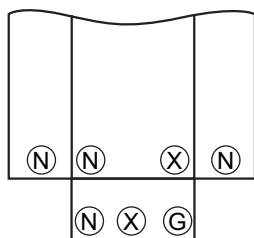
(Fig. 9)



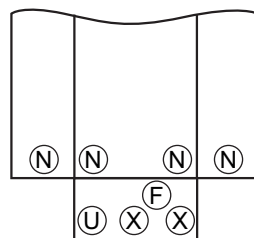
(Fig. 10)



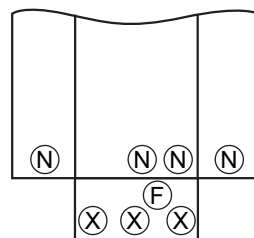
(Fig. 11)



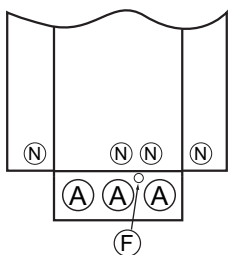
(Fig. 12)



(Fig. 13)



(Fig. 14)



(Fig. 15)

KEY

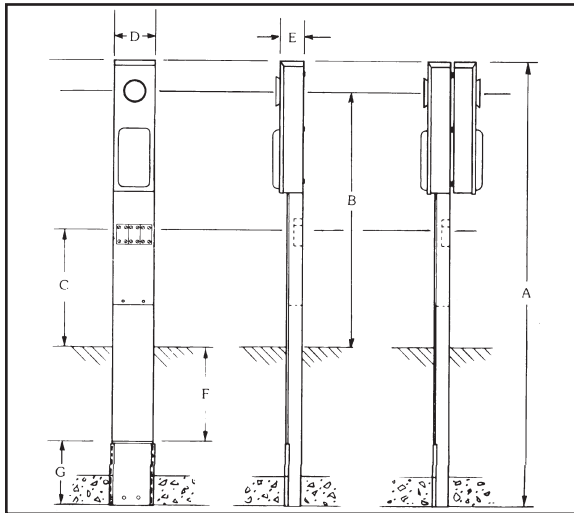
- A= 1-1/2", 2", 2-1/2"
- B= 1", 1-1/4", 1-1/2"
- C= 1-1/4", 1-1/2", 2"
- D= 3/4", 1", 1-1/4"
- E= 3/4"
- F= 1/2"
- G= 1/2", 3/4", 1"
- H= 9/32"
- L= 1/2", 3/4"
- N= 1/2", 3/4", 1", 1-1/4", 1-1/2", 2"

- P= 1-1/4", 1-1/2", 2", 2-1/2"
- Q= 1"
- R= 3/4", 1", 1-1/4", 1-1/2", 2"
- S= 1/2", 3/4", 1", 1-1/4", 1-1/2"
- U= 1/2", 3/4", 1", 1-1/4", 1-1/2", 2", 2-1/2", 3"
- V= 3/4", 1", 1-1/4", 1-1/2"
- X= 1/2", 3/4", 1-1/4", 1-1/2", 2", 2-1/2"
- Y= 1-1/4", 1-1/2", 2", 2-1/2", 3"
- Z= 2-1/2", Max Hub Opening

∠ KO's shown for size, not for exact positions.

Post Dimensions

9PT EARTH BURIAL

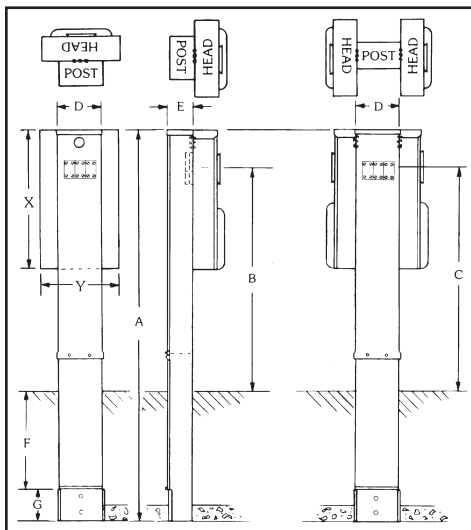


Single Head Post

Double Head Post
(Back to Back)

	UNMETERED	METERED
A	65"	77-1/2"
B	---	45-1/4"
C	19-1/8"	19-1/8"
D	9"	9"
E	4-3/8"	4-3/8"
F	18"	18"
G	6"	6"

14PT EARTH BURIAL



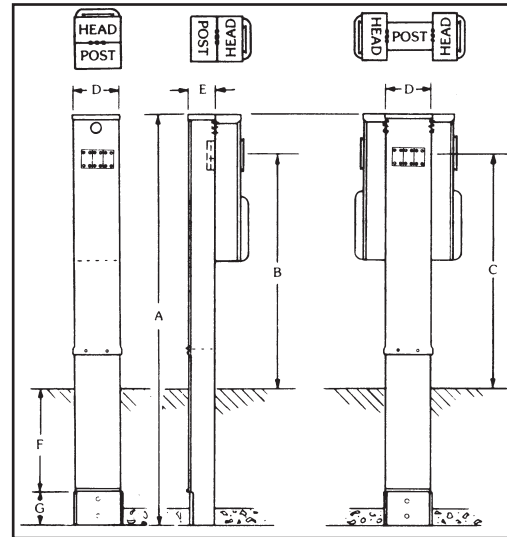
Single Head Post

Double Head Post
(Back to Back)

POWERHEAD
14" x 38"
14" x 21"

	UNMETERED	METERED
A	83-1/2"	86"
B	---	50"
C	49-1/2"	49-1/2"
D	14"	14"
E	4-3/8"	4-3/8"
F	18"	18"
G	6"	6"

9HP EARTH BURIAL



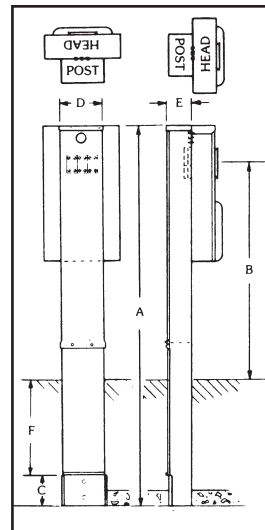
Single Head Post

Double Head Post
(Back to Back)

POWERHEAD
9" x 30"

METERED		
	100A	200A
A	83-1/2"	83-1/2"
B	51-1/4"	48-3/4"
C	47"	47"
D	9"	9"
E	4-3/8"	4-3/8"
F	18"	18"
G	6"	6"

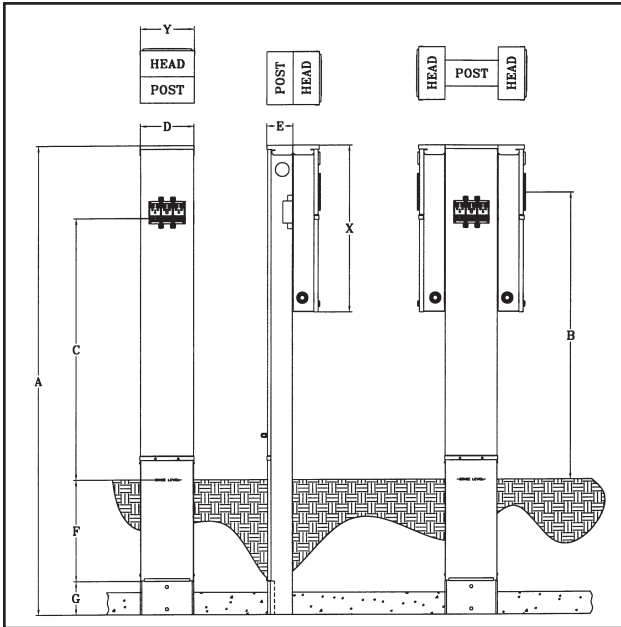
14HP EARTH BURIAL



POWERHEAD
14" x 34-1/2"

METERED	
A	83-1/2"
B	48-3/4"
C	6"
D	14"
E	4-3/8"
F	18"

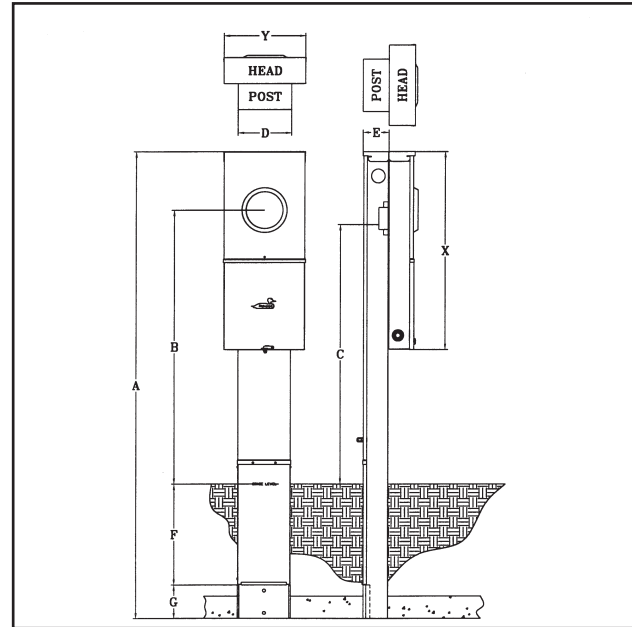
Post Dimensions 6H EARTH BURIAL



	UNMETERED	METERED
A	83-1/2"	84"
B	---	51-1/2"
C	46-1/2"	46-1/2"
D	9-1/2"	9-1/2"
E	3-1/2"*	4-1/2"
F	18"	18"
G	6"	6"
X	21-1/2"	30"
Y	9-1/2"	9-1/2"

* Some models available in 4-3/8".
Contact Distributor/Manufacturer.

6H034 EARTH BURIAL



	METERED
A	83-1/2"
B	49"
C	46-1/2"
D	9-1/2"
E	4-1/2"
F	18"
G	6"
X	35"
Y	14"

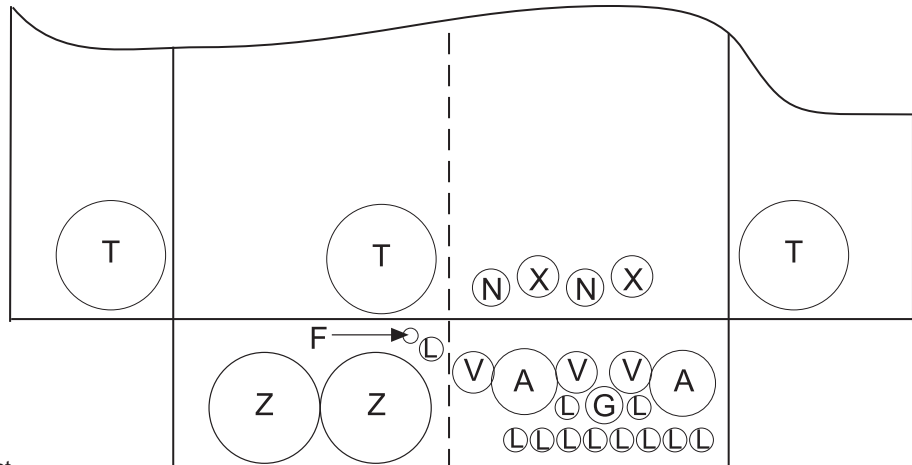
Service Equipment

400 Amp Wire Range and Knockout Detail

TABLE 400A

Connector	Copper		Aluminum	
	Solid	Strand	Solid	Strand
Line*	----	----	----	----
Load 1	1-300	----	1-300	----
Neutral N1	----	1-300	----	1-300
Equip. Grnd.	6-2/0	6-2/0	6-2/0	6-2/0

- A = 1-1/2", 2", 2-1/2"
- F = 1/2"
- G = 1/2", 3/4", 1"
- L = 1/2", 3/4"
- T = 3-1/2", 4"
- V = 3/4", 1", 1-1/4", 1-1/2"
- X = 1/2", 3/4", 1-1/4", 1-1/2", 2", 2-1/2"
- Z = 2-1/2", 3", 3-1/2", 4"



* Crimp-on/connector lug is not supplied by Midwest.