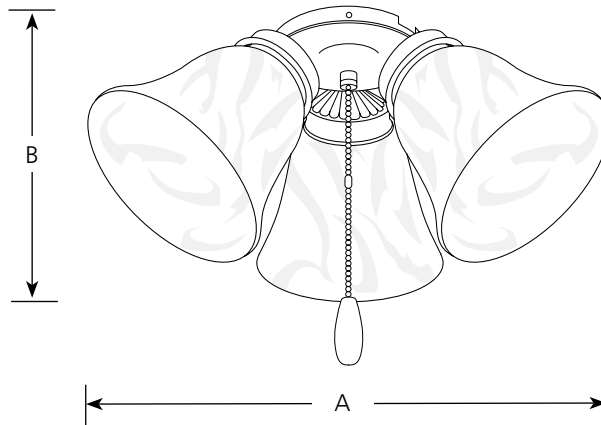


Type	_____			
	-09	-20	-30	-33
P2600	<input type="checkbox"/>	<input type="checkbox"/>	<input type="checkbox"/>	<input type="checkbox"/>

Catalog No	Finish				Lamping	Dimensions (Inches)	
	Brushed Nickel	Antique Bronze	White	Cobble-stone		A	B
P2600	-09	-20	-30	-33	3-60w (m) or 3-13w CFL (m) (included)	15	6-5/8



Specifications:

General

- Three alabaster glass shades with spring-clip attachment
- Glass: 5-3/8" dia. x 4-7/8" tall
- Pull chain on brushed nickel (-09) is chrome with a maple fob, white (-30) finish is chrome with a white fob, polished brass (-10) is polished brass chain with a medium oak fob, and on the rest are antique brass with a medium oak fob.
- Utilizes 3 - 60w medium based lamp and includes 3 - 13w medium base CFL (non-dimmable)
- Meets requirements of Energy Policy Act of 2005 (EPACT)

Mounting

- For use on P2500, P2501, P2524, P2525, and P2502 (indoor only) fans only.

Electrical

- Three ceramic medium based socket
- Quick connect wiring to fan

- Prewired

Labeling

- UL listed