

Condulet® Conduit Outlet Boxes With Covers

Cl. I, Div. 1 & 2, Groups A,B,C,D
 Cl. II, Div. 1, Groups E,F,G
 Cl. II, Div. 2, Groups F,G
 Cl. III
 NEMA 3,4,7ABCD,9EFG

Explosionproof
 Dust-Ignitionproof
 Raintight
 Wet Locations

4F

4F Conduit Outlet Boxes & Bodies

Application:

EAB series conduit outlet boxes are installed in conduit systems within hazardous areas to:

- provide protection against exterior explosion where acetylene, hydrogen and other hazardous gases are present
- protect conductors in threaded rigid conduit
- act as pull and splice boxes
- interconnect lengths of conduit
- change conduit direction
- provide access to conductors for maintenance and future system changes

Features:

EAB series conduit outlet boxes have:

- five different hub configurations
- taper threaded hubs to provide ground continuity
- smooth integral hub bushing to protect conductor insulation when pulling
- threaded cover openings
- surface covers furnished with boxes
- Neoprene "o"-ring gasket and green ground screw are both standard.
- Four standard mounting pads, except for EABY.
- Cover threads are 16 pitch.

Standard Materials:

- Body – *Feraloy*® iron alloy
- Cover – copper-free aluminum

Standard Finishes:

- *Feraloy* – electrogalvanized and aluminum acrylic paint
- Aluminum – natural

Options:

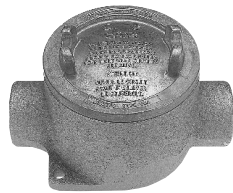
Description	Suffix to be Added to Cat. #
Bodies – copper-free aluminum	SA†
Covers – <i>Feraloy</i> iron alloy – electrogalvanized and aluminum acrylic paint	WOD
<i>Corro-free</i> epoxy power coat	S752

Size Ranges:

- Hub – 1/2" to 1"
- Cover opening – 3" dia.

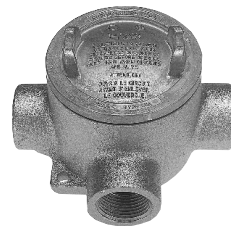
Certifications and Compliances:

- NEC/CEC:
 Class I, Division 1 & 2, Groups A,B,C,D
 Class II, Division 1, Groups E,F,G
 Class II, Division 2, Groups F,G
 Class III
- UL Standard: 886
- CSA Standard: C22.2 No. 30



EABC

Hub Size	Cat. #
1/2	EABC16†
3/4	EABC26†
1	EABC36†



EABT

Hub Size	Cat. #
1/2	EABT16†
3/4	EABT26†
1	EABT36†



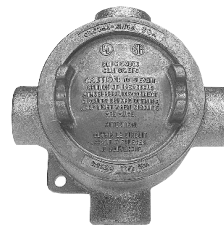
EABY

Hub Size	Cat. #
1/2	EABY16†
3/4	EABY26†



EABL

Hub Size	Cat. #
1/2	EABL16†
3/4	EABL26†
1	EABL36†



EABX

Hub Size	Cat. #
1/2	EABX16†
3/4	EABX26†
1	EABX36†

Replacement Cover:

Size	Cat. #
3"	EAB06

Replacement O-Ring:

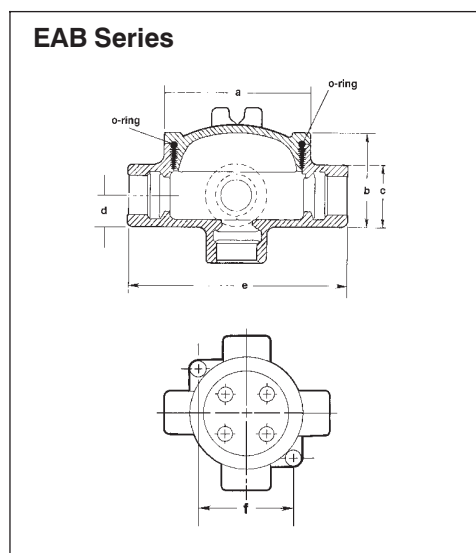
Cat. #	GASK1151
--------	----------



Fixture Cover: Union Hub Type

Cover Opening Dia.	Fixt. Stem Size	Cat. #
3"	3/4	EAB0687*

Dimensions



Cat. #	a	b	c	d	e	f
16	3/4	2 17/32	1 1/2	3/4	5 5/16	3 3/32
26	3 3/4	2 25/32	1 3/4	7/8	5 9/16	3 3/32
36	3 3/4	2 25/32	1 3/4	7/8	5 9/16	3 3/32

† Available in copper-free aluminum, add suffix -SA.

* EAB0687 is listed for Group C & D only.