

Recessed Service Floor Boxes

664 Series Floor Box



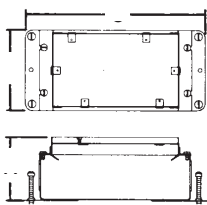
Multiple-Service Floor Boxes for Power, Communications and Data

Multiple-service floor boxes deliver power, communications and data from standard conduit with no exposed service fittings. Result: Open office planning flexibility. Ideal for the modern office with workstations that have power, communications and data equipment. Power receptacles and low-voltage connections can be enclosed underfloor in either steel or cast-iron bodies. Galvanized 14-gauge steel boxes are provided with knockouts from 3/4 in. to 1-1/4 in. Cast-iron bodies have threaded openings for 3/4 in. and 1 in. conduit.

- Two-compartment boxes are available in three types: stamped steel (664-SC), shallow (664-S) and cast iron (664-CI)
- Durable nonmetallic covers include a steel reinforcement plate for added strength
- New! Metallic covers in solid brass and aluminum provide aesthetics and durability
- Four leveling screws enable quick leveling to desired **concrete** depth
- Cover flange self-levels with the finished floor for easy installation

Cat. No.	Description	Std. Ctn.
664-SC	Stamped-Steel Box which Accepts Two Plates, One Duplex Plate Provided	4
664-CI	Cast-Iron Box which Accepts Two Plates, One Duplex Plate Provided	
664-S	Shallow Stamped-Steel Box which Accepts Two Plates, One Duplex Plate Provided	

When ordering a 664 Series box, the cover must be ordered separately, see page C50
For communications accessories, see page C85



664-CI



664-SC



664-S

Engineering Data — 664 Series

Cat. No.	Dimensions (in.)			Before Pour Adj. (in.)	After Pour Adj. (in.)	Maximum Capacity (cu. in.)	Standard Conduit Tapping	Maximum Conduit Tapping (in.)		Conduit KOS		Covers
	A	B	C					W/Bushing	W/O Bushing	Sides	Bottom	
664-SC	3-3/4	4-11/16	10-1/4	2-1/2	3/4	24 per gang 90 total	—	—	—	(4) 1in. – 1-1/4 in. (4) 3/4	None	664-CST Series
664-CI	3-3/4	5-3/32	9-15/16	2-1/2	3/4	24 per gang 90 total	(4) 3/4 in. (4) 1 in.	1	1-1/2	—	—	664-CST Series
664-S	2-7/8	4-11/18	10-1/4	1-1/2	3/4	16.5 per gang 70 total	—	—	—	(6) 3/4 in.	None	664-CST Series

Caution: When using the center side KOs, Catalogue Number 664-RP must be assembled to the box prior to installing the conduit

Recessed Service Floor Boxes

Metallic Covers for 664 Series Floor Boxes



664-CST-M-BRS
Solid Brass



664-CST-M-ALM
Solid Aluminum



664-CST-M-BLK
Solid Black



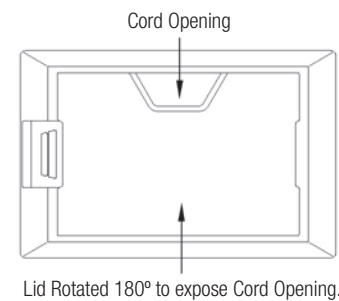
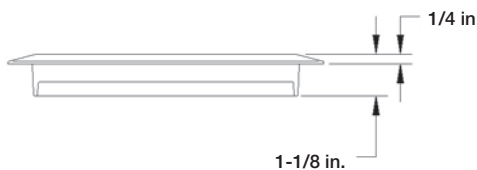
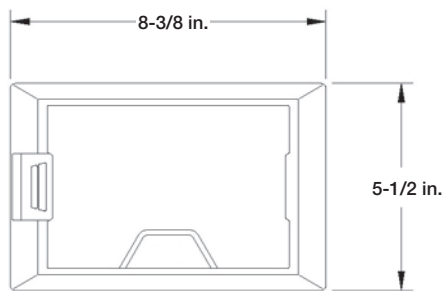
664-CI
Cast Iron for Slab or Grade Applications



664-S
For Shallow Concrete Applications



664-SC
Stamped Steel for General Purpose



MopTite™ Covers meet UL scrub-water exclusion requirements for carpet, tile and wood



Cat. No.	Finish	Load Rating (lb.)	Std. Ctn.
664-CST-M-BRS	Solid Brass	2,250	1
664-CST-M-ALM	Solid Aluminum	2,250	1
664-CST-M-BLK	Solid Black	2,250	1

Recessed Service Floor Boxes

Nonmetallic Covers for 664 Series Floor Boxes

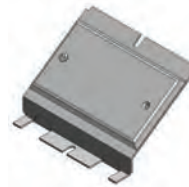
- Duplex receptacle face plate for 664 Series floor box for additional power service
- Does not include duplex



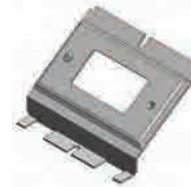
664-CST-SW-BLK



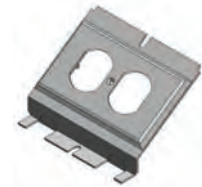
664-CST-SW-BRN



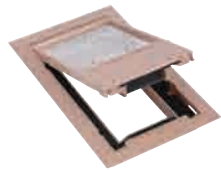
664-BP



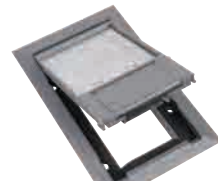
664-GP



664-RP



664-CST-SW-BGE



664-CST-SW-GRY

Cat. No.	Description	Std. Ctn.
664-BP	Blank Plate	4
664-GP	GFCI Receptacle Plate	
664-RP	Duplex Receptacle Plate	

Caution: When using the center side KO's, all 664 plates must be assembled to the box prior to installing the conduit

Device Plates – 664-S



664-S-RP



664-S-BP



Cat. No.	Description	Std. Ctn.
664-S-RP	Duplex Receptacle Plate	4
664-S-BP	Blank Plate	

Wire Tunnel for 664 Series

- Wire tunnel for protecting electrical connections between the two duplex receptacles when the box is used for power/power application



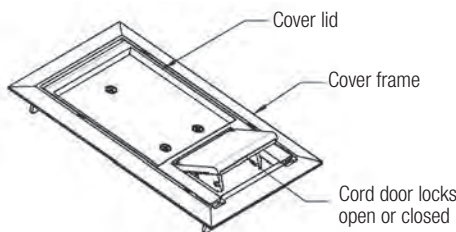
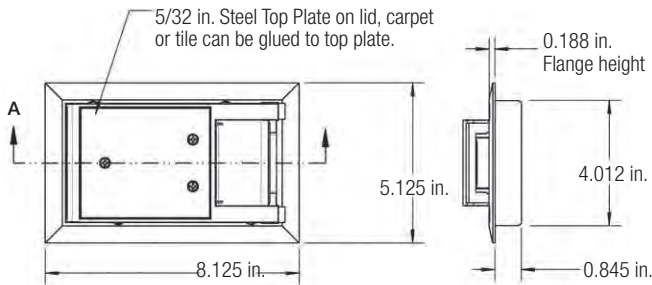
664-WT



664-S-WT



Cat. No.	For Use With	Std. Ctn.
664-WT	664 and 664-CI Floor Boxes	4
664-S-WT	664-S Floor Box	4



MopTite™ covers meet UL scrub-water exclusion requirements for carpet, tile and wood



Cat. No.	Colour	Load Rating (lb.)	Std. Ctn.
664-CST-SW-GRY	Grey	1,500	1
664-CST-SW-BRN	Brown	1,500	1
664-CST-SW-BGE	Beige	1,500	1
664-CST-SW-BLK	Black	1,500	1

Material: Polycarbonate with 5/32 in. steel plate (see page C49 for metallic cover options)