

## TYPE CLNS

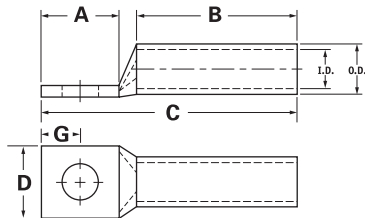
### Features

- Manufactured from high strength seamless copper tubing
- Electro-Tin plated
- Chamfered entry
- Color coded
- Suitable for use in circuits rated 35KV or less, proper high voltage spacing and insulation techniques must be used
- UL Listed and CSA Certified with ILSCO and major competitor's compression tools
- UL467 Listed 500 kcmil - 8 AWG, #8 - #2 SOL
- Rated to 90° C

### Benefits

- Offers maximum conductivity and excellent crimping characteristics
- Provides low contact resistance
- For easy conductor insertion
- Identifies the proper compression die
- Application versatility
- Reduces inventory requirements
- For grounding and bonding applications

**A**



Catalog Number	Wire Size	Alt Wire Size	Expanded* Wire Range	Bolt Size	Stud Hole Dia.	Dimensions					Die Color Code	Die Index	O.D.	I.D.
						A	B	C	D	G				
CLNS-8-10	#8 AWG	#8 FLEX, #8 SOL	-	10	0.219	0.562	0.812	1.569	0.374	0.258	Red	I-21	0.272	0.179
CLNS-8-14	#8 AWG	#8 FLEX, #8 SOL	-	1/4	0.281	0.680	0.812	1.687	0.486	0.320	Red	I-21	0.272	0.179
CLNS-8-516	#8 AWG	#8 FLEX, #8 SOL	-	5/16	0.343	0.875	0.812	1.882	0.532	0.352	Red	I-21	0.272	0.179
CLNS-8-38	#8 AWG	#8 FLEX, #8 SOL	-	3/8	0.406	0.875	0.812	1.882	0.593	0.414	Red	I-21	0.272	0.179
CLNS-6-10	#6 AWG	#6 FLEX, #6 SOL	-	10	0.219	0.562	1.125	1.882	0.440	0.258	Blue	I-24	0.320	0.225
CLNS-6-14	#6 AWG	#6 FLEX, #6 SOL	-	1/4	0.281	0.680	1.125	2.000	0.440	0.320	Blue	I-24	0.320	0.225
CLNS-6-516	#6 AWG	#6 FLEX, #6 SOL	-	5/16	0.343	0.875	1.125	2.195	0.530	0.352	Blue	I-24	0.320	0.225
CLNS-6-38	#6 AWG	#6 FLEX, #6 SOL	-	3/8	0.406	0.875	1.125	2.195	0.598	0.414	Blue	I-24	0.320	0.225
CLNS-6-12	#6 AWG	#6 FLEX, #6 SOL	-	1/2	0.562	1.250	1.125	2.570	0.755	0.546	Blue	I-24	0.320	0.225
CLNS-4-10	#4 AWG	#4 SOL	4-6 AWG	10	0.219	0.562	1.125	1.921	0.486	0.258	Gray	I-29	0.343	0.250
CLNS-4-14	#4 AWG	#4 SOL	4-6 AWG	1/4	0.281	0.680	1.125	2.039	0.486	0.320	Gray	I-29	0.343	0.250
CLNS-4-516	#4 AWG	#4 SOL	4-6 AWG	5/16	0.343	0.875	1.125	2.234	0.486	0.352	Gray	I-29	0.343	0.250
CLNS-4-38	#4 AWG	#4 SOL	4-6 AWG	3/8	0.406	0.875	1.125	2.234	0.593	0.414	Gray	I-29	0.343	0.250
CLNS-4-12	#4 AWG	#4 SOL	4-6 AWG	1/2	0.562	1.250	1.125	2.609	0.750	0.546	Gray	I-29	0.343	0.250
CLNS-3-10	#3 AWG	#4 FLEX	3-6 AWG	10	0.219	0.562	1.125	1.942	0.532	0.258	White	I-29	0.375	0.275
CLNS-3-14	#3 AWG	#4 FLEX	3-6 AWG	1/4	0.281	0.680	1.125	2.060	0.532	0.320	White	I-29	0.375	0.275
CLNS-3-516	#3 AWG	#4 FLEX	3-6 AWG	5/16	0.343	0.875	1.125	2.255	0.532	0.352	White	I-29	0.375	0.275
CLNS-3-38	#3 AWG	#4 FLEX	3-6 AWG	3/8	0.406	0.875	1.125	2.255	0.593	0.414	White	I-29	0.375	0.275
CLNS-3-12	#3 AWG	#4 FLEX	3-6 AWG	1/2	0.562	1.250	1.125	2.630	0.750	0.546	White	I-29	0.375	0.275
CLNS-2-10	#2 AWG	#2 SOL	2-6 AWG	10	0.219	0.562	1.125	1.973	0.599	0.258	Brown	I-33	0.421	0.312
CLNS-2-14	#2 AWG	#2 SOL	2-6 AWG	1/4	0.281	0.680	1.125	2.091	0.599	0.320	Brown	I-33	0.421	0.312
CLNS-2-516	#2 AWG	#2 SOL	2-6 AWG	5/16	0.343	0.875	1.125	2.286	0.599	0.352	Brown	I-33	0.421	0.312
CLNS-2-38	#2 AWG	#2 SOL	2-6 AWG	3/8	0.406	0.875	1.125	2.286	0.599	0.414	Brown	I-33	0.421	0.312
CLNS-2-12	#2 AWG	#2 SOL	2-6 AWG	1/2	0.562	1.250	1.125	2.661	0.750	0.546	Brown	I-33	0.421	0.312
CLNS-1-10	#1 AWG	#2 FLEX	1-6 AWG	10	0.219	0.562	1.375	2.267	0.673	0.258	Green	I-37	0.468	0.359
CLNS-1-14	#1 AWG	#2 FLEX	1-6 AWG	1/4	0.281	0.875	1.375	2.580	0.673	0.320	Green	I-37	0.468	0.359
CLNS-1-516	#1 AWG	#2 FLEX	1-6 AWG	5/16	0.343	0.875	1.375	2.580	0.673	0.352	Green	I-37	0.468	0.359
CLNS-1-38	#1 AWG	#2 FLEX	1-6 AWG	3/8	0.406	0.875	1.375	2.580	0.673	0.414	Green	I-37	0.468	0.359
CLNS-1-12	#1 AWG	#2 FLEX	1-6 AWG	1/2	0.562	1.250	1.375	2.955	0.750	0.546	Green	I-37	0.468	0.359
CLNS-1/0-10	1/0 AWG	#1 FLEX	1/0-6 AWG	10	0.219	0.562	1.500	2.418	0.738	0.258	Pink	I-42	0.515	0.390
CLNS-1/0-14	1/0 AWG	#1 FLEX	1/0-6 AWG	1/4	0.281	0.875	1.500	2.731	0.738	0.320	Pink	I-42	0.515	0.390
CLNS-1/0-516	1/0 AWG	#1 FLEX	1/0-6 AWG	5/16	0.343	0.875	1.500	2.731	0.738	0.352	Pink	I-42	0.515	0.390
CLNS-1/0-38	1/0 AWG	#1 FLEX	1/0-6 AWG	3/8	0.406	0.875	1.500	2.731	0.738	0.414	Pink	I-42	0.515	0.390
CLNS-1/0-12	1/0 AWG	#1 FLEX	1/0-6 AWG	1/2	0.562	1.250	1.500	3.106	0.738	0.546	Pink	I-42	0.515	0.390

All wire sizes, unless noted otherwise, are American Wire Gauge (AWG)

\* When installed with specified dieless tools

See pages 98 to 103 for complete tooling information.

For Bent Tangs change the 4th letter to a B and add "-4" for 45 deg. or "-9" for 90 deg.

UL File E6207

**A**

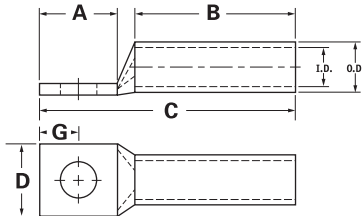
## TYPE CLNS

### Features

- Manufactured from high strength seamless copper tubing
- Electro-Tin plated
- Chamfered entry
- Color coded
- Suitable for use in circuits rated 35KV or less, proper high voltage spacing and insulation techniques must be used
- UL Listed and CSA Certified with ILSCO and major competitor's compression tools
- UL467 Listed 500 kcmil - 8 AWG , #8 - #2 SOL
- Rated to 90° C

### Benefits

- Offers maximum conductivity and excellent crimping characteristics
- Provides low contact resistance
- For easy conductor insertion
- Identifies the proper compression die
- Application versatility
- Reduces inventory requirements
- For grounding and bonding applications



Catalog Number	Wire Size	Alt Wire Size	Expanded* Wire Range	Bolt Size	Stud Hole Dia.	Dimensions					Die Color Code	Die Index	O.D.	I.D.
						A	B	C	D	G				
CLNS-2/0-10	2/0 AWG	1/0 FLEX	2/0-4 AWG	10	0.219	0.562	1.500	2.458	0.811	0.258	Black	I-45	0.562	0.437
CLNS-2/0-14	2/0 AWG	1/0 FLEX	2/0-4 AWG	1/4	0.281	0.875	1.500	2.771	0.811	0.320	Black	I-45	0.562	0.437
CLNS-2/0-516	2/0 AWG	1/0 FLEX	2/0-4 AWG	5/16	0.343	0.875	1.500	2.771	0.811	0.352	Black	I-45	0.562	0.437
CLNS-2/0-38	2/0 AWG	1/0 FLEX	2/0-4 AWG	3/8	0.406	0.875	1.500	2.771	0.811	0.414	Black	I-45	0.562	0.437
CLNS-2/0-12	2/0 AWG	1/0 FLEX	2/0-4 AWG	1/2	0.562	1.250	1.500	3.146	0.811	0.546	Black	I-45	0.562	0.437
CLNS-3/0-10	3/0 AWG	2/0 FLEX	3/0-2 AWG	10	0.219	0.562	1.500	2.501	0.885	0.258	Orange	I-50	0.609	0.484
CLNS-3/0-14	3/0 AWG	2/0 FLEX	3/0-2 AWG	1/4	0.281	0.875	1.500	2.814	0.885	0.320	Orange	I-50	0.609	0.484
CLNS-3/0-516	3/0 AWG	2/0 FLEX	3/0-2 AWG	5/16	0.343	0.875	1.500	2.814	0.885	0.352	Orange	I-50	0.609	0.484
CLNS-3/0-38	3/0 AWG	2/0 FLEX	3/0-2 AWG	3/8	0.406	0.875	1.500	2.814	0.885	0.414	Orange	I-50	0.609	0.484
CLNS-3/0-12	3/0 AWG	2/0 FLEX	3/0-2 AWG	1/2	0.562	1.250	1.500	3.189	0.885	0.546	Orange	I-50	0.609	0.484
CLNS-4/0-14	4/0 AWG	3/0 FLEX	4/0-1 AWG	1/4	0.281	0.875	1.500	2.866	0.999	0.320	Purple	I-54	0.687	0.546
CLNS-4/0-516	4/0 AWG	3/0 FLEX	4/0-1 AWG	5/16	0.343	0.875	1.500	2.866	0.999	0.352	Purple	I-54	0.687	0.546
CLNS-4/0-38	4/0 AWG	3/0 FLEX	4/0-1 AWG	3/8	0.406	0.875	1.500	2.866	0.999	0.414	Purple	I-54	0.687	0.546
CLNS-4/0-12	4/0 AWG	3/0 FLEX	4/0-1 AWG	1/2	0.562	1.250	1.500	3.241	0.999	0.546	Purple	I-54	0.687	0.546
CLNS-250-516	250kcmil	4/0 FLEX	250kcmil - 1/0 AWG	5/16	0.343	0.875	1.688	3.094	1.088	0.352	Yellow	I-62	0.750	0.593
CLNS-250-38	250kcmil	4/0 FLEX	250kcmil - 1/0 AWG	3/8	0.406	0.875	1.688	3.094	1.088	0.414	Yellow	I-62	0.750	0.593
CLNS-250-12	250kcmil	4/0 FLEX	250kcmil - 1/0 AWG	1/2	0.562	1.250	1.688	3.469	1.088	0.546	Yellow	I-62	0.750	0.593
CLNS-300-516	300kcmil	250 G,H FLEX	300kcmil - 2/0 AWG	5/16	0.343	0.875	2.000	3.462	1.189	0.352	White	I-66	0.812	0.660
CLNS-300-38	300kcmil	250 G,H FLEX	300kcmil - 2/0 AWG	3/8	0.406	0.875	2.000	3.462	1.189	0.414	White	I-66	0.812	0.660
CLNS-300-12	300kcmil	250 G,H FLEX	300kcmil - 2/0 AWG	1/2	0.562	1.250	2.000	3.837	1.189	0.546	White	I-66	0.812	0.660
CLNS-350-38	350kcmil	250 I,K,M FLEX 262.2 DLO	350kcmil - 3/0 AWG	3/8	0.406	0.875	2.000	3.498	1.291	0.414	Red	I-71	0.890	0.703
CLNS-350-12	350kcmil	250 I,K,M FLEX 262.2 DLO	350kcmil - 3/0 AWG	1/2	0.562	1.250	2.000	3.873	1.291	0.546	Red	I-71	0.890	0.703
CLNS-350-58	350kcmil	250 I,K,M FLEX 262.2 DLO	350kcmil - 3/0 AWG	5/8	0.656	1.437	2.000	4.060	1.291	0.671	Red	I-71	0.890	0.703
CLNS-400-38	400kcmil	300 G,H,I,K,M FLEX 313.1 DLO	400kcmil - 4/0 AWG	3/8	0.406	0.875	2.125	3.667	1.365	0.414	Blue	I-76	0.937	0.750
CLNS-400-12	400kcmil	300 G,H,I,K,M FLEX 313.1 DLO	400kcmil - 4/0 AWG	1/2	0.562	1.250	2.125	4.042	1.365	0.546	Blue	I-76	0.937	0.750
CLNS-400-58	400kcmil	300 G,H,I,K,M FLEX 313.1 DLO	400kcmil - 4/0 AWG	5/8	0.656	1.437	2.125	4.229	1.365	0.671	Blue	I-76	0.937	0.750

All wire sizes, unless noted otherwise, are American Wire Gauge (AWG)

\* When installed with specified dieless tools

See pages 98 to 103 for complete tooling information.

For Bent Tangs change the 4th letter to a B and add "-4" for 45 deg. or "-9" for 90 deg.

UL File E6207

## TYPE CLNS

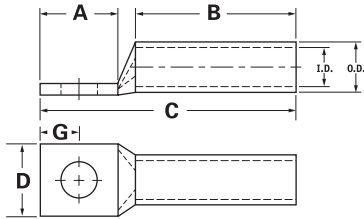
### Features

- Manufactured from high strength seamless copper tubing
- Electro-Tin plated
- Chamfered entry
- Color coded
- Suitable for use in circuits rated 35KV or less, proper high voltage spacing and insulation techniques must be used
- UL Listed and CSA Certified with ILSCO and major competitor's compression tools
- UL467 Listed 500 kcmil - 8 AWG , #8 - #2 SOL
- Rated to 90° C

### Benefits

- Offers maximum conductivity and excellent crimping characteristics
- Provides low contact resistance
- For easy conductor insertion
- Identifies the proper compression die
- Application versatility
- Reduces inventory requirements

**A**



Catalog Number	Wire Size	Alt Wire Size	Expanded* Wire Range	Bolt Size	Stud Hole Dia.	Dimensions					Die Color Code	Die Index	O.D.	I.D.
						A	B	C	D	G				
CLNS-500-38	500kcmil	350 G,H,I,K,M FLEX 373.7 DLO	500kcmil - 250kcmil	3/8	0.406	0.875	2.250	3.857	1.535	0.414	Brown	I-87	1.062	0.828
CLNS-500-12	500kcmil	350 G,H,I,K,M FLEX 373.7 DLO	500kcmil - 250kcmil	1/2	0.562	1.250	2.250	4.232	1.535	0.546	Brown	I-87	1.062	0.828
CLNS-500-58	500kcmil	350 G,H,I,K,M FLEX 373.7 DLO	500kcmil - 250kcmil	5/8	0.656	1.437	2.250	4.419	1.535	0.671	Brown	I-87	1.062	0.828
CLNS-600-38	600kcmil	400 G,H,I,K,M FLEX 444.4 DLO	600kcmil - 250kcmil	3/8	0.406	0.875	2.687	4.371	1.712	0.414	Green	I-94	1.187	0.920
CLNS-600-12	600kcmil	400 G,H,I,K,M FLEX 444.4 DLO	600kcmil - 250kcmil	1/2	0.562	1.250	2.687	4.746	1.712	0.546	Green	I-94	1.187	0.920
CLNS-600-58	600kcmil	400 G,H,I,K,M FLEX 444.4 DLO	600kcmil - 250kcmil	5/8	0.656	1.437	2.687	4.933	1.712	0.671	Green	I-94	1.187	0.920
CLNS-650-516	650kcmil	500 G,H,I,K,M FLEX 535.3 DLO	650kcmil - 350kcmil	1/32	0.343	0.875	2.687	4.431	1.764	0.352	Pink	I-99	1.217	0.958
CLNS-650-38	650kcmil	500 G,H,I,K,M FLEX 535.3 DLO	650kcmil - 350kcmil	3/8	0.406	0.875	2.687	4.431	1.764	0.414	Pink	I-99	1.217	0.958
CLNS-650-12	650kcmil	500 G,H,I,K,M FLEX 535.3 DLO	650kcmil - 350kcmil	1/2	0.562	1.250	2.687	4.806	1.764	0.546	Pink	I-99	1.217	0.958
CLNS-650-58	650kcmil	500 G,H,I,K,M FLEX 535.3 DLO	650kcmil - 350kcmil	5/8	0.656	1.437	2.687	4.993	1.764	0.671	Pink	I-99	1.217	0.958
CLNS-700-38	700kcmil	500 G,H,I,K,M FLEX 535.3 DLO	700kcmil - 350kcmil	3/8	0.406	0.875	2.687	4.431	1.816	0.414	Pink	I-99	1.250	0.991
CLNS-700-12	700kcmil	500 G,H,I,K,M FLEX 535.3 DLO	700kcmil - 350kcmil	1/2	0.562	1.250	2.687	4.806	1.816	0.546	Pink	I-99	1.250	0.991
CLNS-700-58	700kcmil	500 G,H,I,K,M FLEX 535.3 DLO	700kcmil - 350kcmil	5/8	0.656	1.437	2.687	4.993	1.816	0.671	Pink	I-99	1.250	0.991
CLNS-750-38	750kcmil	600 G,H,I,M FLEX 646.4 DLO	750kcmil - 500kcmil	3/8	0.406	0.875	2.875	4.652	1.901	0.414	Black	I-106	1.313	1.031
CLNS-750-12	750kcmil	600 G,H,I,M FLEX 646.4 DLO	750kcmil - 500kcmil	1/2	0.562	1.250	2.875	5.027	1.901	0.546	Black	I-106	1.313	1.031
CLNS-750-58	750kcmil	600 G,H,I,M FLEX 646.4 DLO	750kcmil - 500kcmil	5/8	0.656	1.437	2.875	5.214	1.901	0.671	Black	I-106	1.313	1.031
CLNS-1000-38	1000kcmil	750 G,H,I FLEX 777.7 DLO	1000kcmil - 750kcmil	3/8	0.406	0.875	3.000	4.900	2.169	0.414	White	I-125	1.500	1.172
CLNS-1000-12	1000kcmil	750 G,H,I FLEX 777.7 DLO	1000kcmil - 750kcmil	1/2	0.562	1.250	3.000	5.275	2.169	0.546	White	I-125	1.500	1.172
CLNS-1000-58	1000kcmil	750 G,H,I FLEX 777.7 DLO	1000kcmil - 750kcmil	5/8	0.656	1.437	3.000	5.462	2.169	0.671	White	I-125	1.500	1.172

All wire sizes, unless noted otherwise, are American Wire Gauge (AWG)

\* When installed with specified dieless tools

See pages 98 to 103 for complete tooling information.

For Bent Tangs change the 4th letter to a B and add "-4" for 45 deg. or "-9" for 90 deg.

UL File E6207