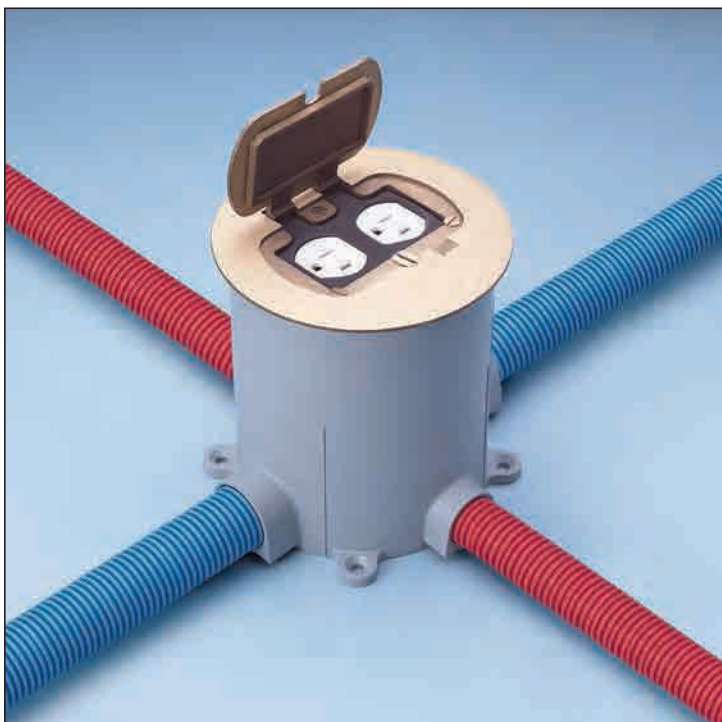


## Round Floor Boxes

### Round Floor Box System

#### Features

- Nonmetallic PVC construction, watertight gasket and corrosion-resistant hardware assure long life and reliable performance even in harsh and/or corrosive environments
- Covers are available for a variety of applications
- The same box depth simplifies ordering and reduces inventory
- For carpet and tile applications
- Cover options include: Brass, Stainless Steel and Nonmetallic (Ivory, Caramel, Taupe, Slate and Brown)
- Concrete tight and suitable for any on-grade/below grade application; concrete or wood floor construction approved
- Y-connector (E972Y) allows you to feed parallel runs of 3/4 in. conduit or to feed in/out from the same side for increased wiring and faster installation
- PVC molded hubs and reducer plugs included
- Accepts 1/2 in., 3/4 in. and 1 in. conduit, tubing or raceway
- UL scrub-water tested, approved for all types of finished flooring



#### Three-way versatility for power, data and communications

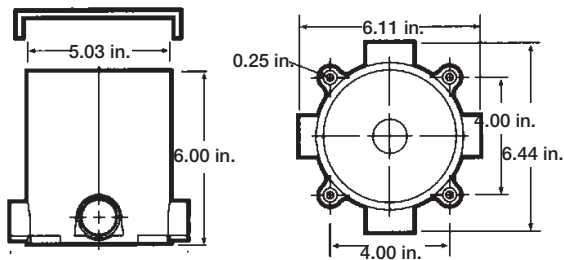
Carlton® Round Floor Boxes give you the same cost-saving advantages over metal boxes as our rectangular boxes. By letting you combine power, data and communications in the same box, you can dramatically reduce your installation time and cost compared to other nonmetallic boxes.

In addition, multi-use covers mean fewer SKUs to deal with and greater jobsite flexibility to increase your savings further. Take a closer look at all the advantages for yourself.

## Flush Service Floor Boxes

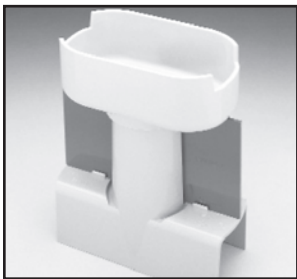
### Features

- Carlton® round Floor Boxes allow for various thickness of concrete pours. Trim out is easy – just use a handsaw to cut off box at desired height to accommodate carpet, tile or other flooring
- Carlton leveling ring guarantees a level top every time, even if the box is tipped slightly during the pouring process



### Accessories

#### Multi-Service Divider Kit



Cat. No.	Internal Volume (cu. in.)	Min. Concrete Depth (in.)	Hubs	Reducer Plugs	Std. Ctn. Qty.	Std. Ctn. Wt. (lb.)
<b>E971FB</b>	90.0 (15.5 per inch of depth)	3-1/2	(2) 1 in. and (2) 3/4 in.	(2) 1 in. x 3/4 in. and (2) 3/4 x 1/2 in.	10	15.6

Multi-Service divider kit for separate power, data and communications compartments provides unbeatable flexibility and money-saving installation speed. For use with nonmetallic boxes only.

Cat. No.	Std. Ctn. Qty.	Std. Ctn. Wt. (lb.)
<b>E973K</b>	10	3

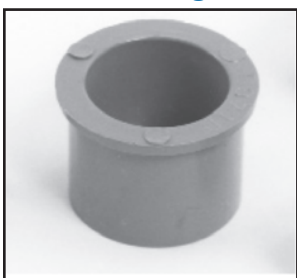
#### 3/4 in. Y Fitting



The 3/4 in. Y Fitting provides for in and out service from a single 1 in. port and allows for two 3/4 in. parallel conduit runs to adapt into a single conduit body port.

Cat. No.	Std. Ctn. Qty.	Std. Ctn. Wt. (lb.)
<b>E972Y</b>	10	2.1

#### Reducer Plugs



Cat. No.	Size (in.)	Std. Ctn. Qty.	Std. Ctn. Wt. (lb.)
<b>E971C</b>	3/4 x 1/2	100	2.1
<b>E971D</b>	1 x 3/4	100	3.2

## Round Floor Boxes

### Nonmetallic Covers



- High impact-resistant thermoplastic
- Compatible with standard NEMA Duplex and 1-1/4 in. N.P.S. receptacles
- Drill points (3/8 in.) provided for low-voltage cable pass throughs
- 1-1/4 in. N.P.S. plugs may be modified to accept smaller fittings (3/8 in., 1/2 in. and 3/4 in.)
- **For carpet and tile applications**
- Scrub-water tested
- Approved for all types of finished flooring



### Duplex Covers



Cat. No.	Colour	Std. Ctn. Qty.	Std. Ctn. Wt. (lb.)
<b>E97DSI</b>	Ivory	10	5.2
<b>E97DSC</b>	Caramel		5.7
<b>E97DST</b>	Taupe		5.7
<b>E97DSS</b>	Slate		5.6
<b>E97DSB</b>	Brown		5.8

### 1-1/4 in. N.P.S. Covers



Cat. No.	Colour	Std. Ctn. Qty.	Std. Ctn. Wt. (lb.)
<b>E97SSRB</b>	Brown	10	3.8
<b>E97SSRC</b>	Caramel		
<b>E97SSRS</b>	Slate		

### Clear Cover Carpet Ring



Cat. No.	Colour	Std. Ctn. Qty.	Std. Ctn. Wt. (lb.)
<b>E97CCR*</b>	Clear	10	1.2

\*Not CSA applicable



## Round Floor Boxes

### Features

- Screws concealed under doors
- Rugged construction
- Coated with a light lacquer finish for extra protection
- Resistance to wear – suited for high traffic areas
- Gasketed for watertight applications
- Available in four styles – Single Door, Two Door, N.P.S. opening and Two Door Dual Service
- **For carpet and tile applications**
- Scrub-water tested

NOTE: Carlton® metal cover adapter ring (E97ABR2) is required with these covers (sold separately)



### Two Door Dual Service

(Divider Kit included)



Cat. No.	Material	Devices	Std. Ctn. Qty.	Std. Ctn. Wt. (lb.)
<b>E97BR2D</b>	Brass	Duplex and two Data Ports	5	9.2
<b>E97SS2D</b>	Stainless Steel			

### Two Door



Cat. No.	Material	Devices	Std. Ctn. Qty.	Std. Ctn. Wt. (lb.)
<b>E97BR2</b>	Brass	Duplex	5	7
<b>E97SS2</b>	Stainless Steel			7.7

### Single Door



Cat. No.	Material	Devices	Std. Ctn. Qty.	Std. Ctn. Wt. (lb.)
<b>E97BR</b>	Brass	GFCI and Duplex	5	7
<b>E97SS</b>	Stainless Steel			7.9

### N.P.S. Opening



Cat. No.	Material	Devices	Std. Ctn. Qty.	Std. Ctn. Wt. (lb.)
<b>E97BRG</b>	Brass	1-1/4 in. Outlet and Single Receptacle	5	7.5
<b>E97SSG</b>	Stainless Steel			8.1

### Metal Cover Adapter Ring



Cat. No.	Description	Std. Ctn. Qty.	Std. Ctn. Wt. (lb.)
<b>E97ABR2</b>	One-Piece Metal Cover Adapter	10	3.3