

## CON EDISON EQUIPMENT



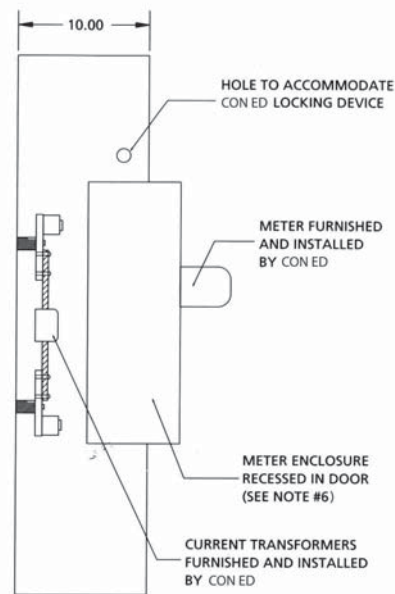
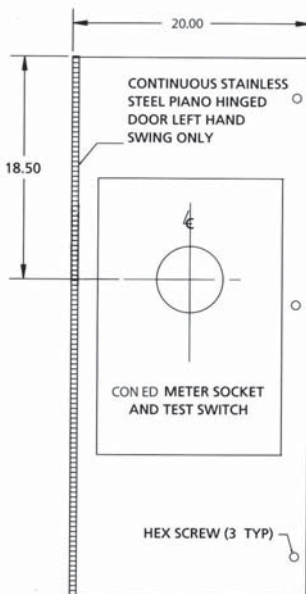
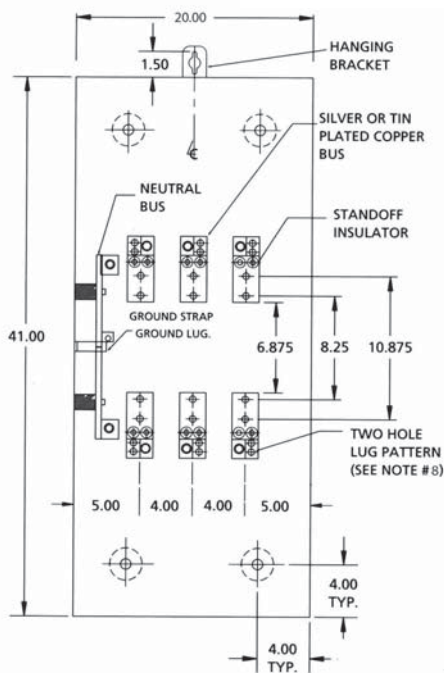
Con Ed Spec.	Navtech Cat. No	Size Description	Volts	Amps	List Price
205	N-205	10x10x5		100	\$72.00
205	RTN-205	10x10x5		100	190.00
215	N-215	24x12x8		200	144.00
215	RTN-215	24x12x8		200	330.00
484	N-484	30x18x12		400	280.00
484	RTN-484	30x18x12		400	520.00
220	N-220	12x12x8			240.00
104A	N-104A	DEMAND METER	120		1000.00

## CON EDISON TRANS-S ENCLOSURES

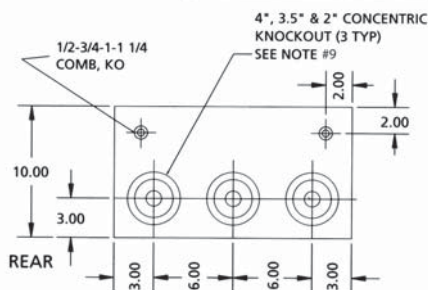


Con Ed Spec.	Navtech Cat. No	Size Description	Volts	Amps	List Price
745	TS-400-208	41x20x10	208	200-400 3PH	\$1,710.00
745	TS-400-480	41x20x10	480	200-400 3PH	1,740.00
750	TS-800-208	48x24x10	208	400-800 3PH	2,110.00
750	TS-800-480	48x24x10	480	400-800 3PH	2,200.00
745	MS-10P-208	21x14x5	208	30 AMP (CONT)	295.00
745	MS-10P-480	21x14x5	480	30 AMP (CONT)	310.00
3" HUB	3" HUB				24.00
3 1/2" HUB	3 1/2" HUB				28.00
4" HUB	4" HUB				30.00
TS-TCP	TOP CLOSING PLATE				16.00

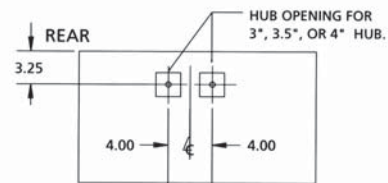
**CON EDISON 400 AMP TRANS "S"  
CURRENT TRANSFORMER CABINET (NEMA 3R)  
200 AMP. & 400 AMP., 240 V & 480V AC RATED  
CATALOG NUMBER TS-400-208  
TS-400-480**



**SIDE VIEW**



**BOTTOM VIEW**



**TOP VIEW**

**NOTES:**

1. CABINET SHALL BE RATED NEMA 3R AND SHALL BE CONSTRUCTED FROM CODE GAUGE GALVANIZED OR GALVANIZED STEEL
2. BUS BAR SHALL BE SILVER OR TIN PLATED AND SHALL BE SIZED PER THE NEC.
3. BUS BAR SHALL BE MOUNTED IN THE CABINET BY MEANS OF STANDOFF INSULATORS OR INSULATED MOUNTING BRACKETS. INSULATING MATERIALS SHALL CONFORM TO THE APPLICABLE SECTIONS OF UL 746 AND UL 94. CABINET SHALL BE UL APPROVED AND N.Y.C. ADVISORY BOARD.
4. THE RIGHT HAND SIDE OF THE CABINET SHALL ALLOW FOR LINE AND LOAD CABLES TO ENTER AND EXIT THROUGH THE BOTTOM OF THE CABINET. THIS SPACE SHALL ALLOW FOR THE CABLES TO MEET THE MINIMUM BENDING RADIUS TO NEAREST PHASE OR NEUTRAL BUS AS PER THE NEC.
5. THE SHORT CIRCUIT WITHSTAND CAPABILITY OF THE CABINET ASSEMBLY SHALL BE A MINIMUM OF 18,000 SYMMETRICAL AMPERES.
6. CABINET DESIGN SHALL HAVE PROVISIONS FOR A SOLID DOOR TO ALLOW FOR THE METER ENCLOSURE TO BE MOUNTED REMOTELY FROM THE CABINET.
7. METERING COMPARTMENT TO BE TOTALLY ISOLATED FROM C. T. COMPARTMENT. FOR "REMOTE" USE CAT. NO. (IOP - 208MS OR IOP - 480MS) AND CONFORM TO MES #751.
8. CABINET MAY BE DESIGNED WITH A SINGLE OR DOUBLE DOOR AS NECESSARY TO CONFORM WITH THE APPLICABLE STANDARDS. OVERALL DIMENSIONS SHALL BE KEPT TO A MINIMUM.
9. HEX HEAD OR THUMB SCREWS MAY BE FURNISHED INSTEAD OF A THREE POINT LATCH.
10. MANUFACTURER SHALL FURNISH AND INSTALL 1/2 - 13 STUDS WITH SPLIT LOCK WASHERS, RING WASHERS AND HEX NUTS FOR C. T. MOUNTING.
11. USE ONLY MANUFACTURER'S APPROVED LUG PROVIDED. LUGS ARE RATED FOR (1) 600 MCM - #4 OR (2) 250 MCM - #4 CABLES.

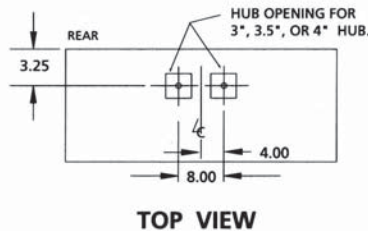
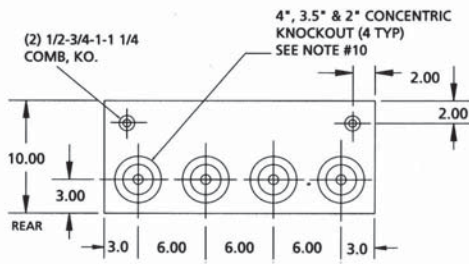
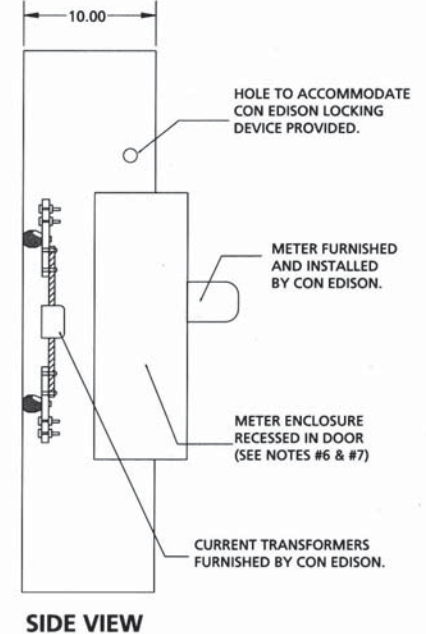
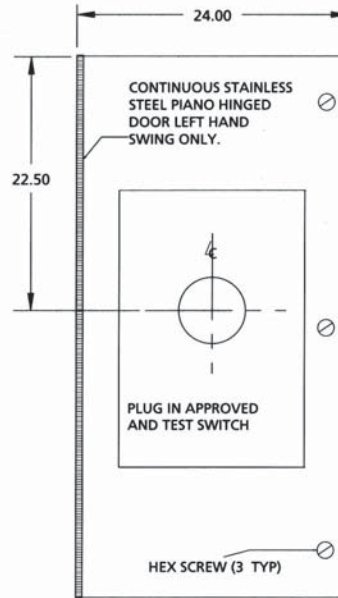
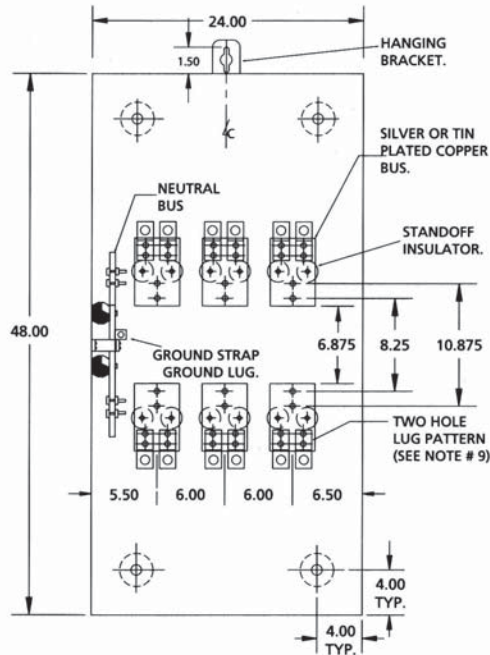
12. ONLY FACTORY PREFABRICATED KNOCKOUTS ON THE ENCLOSURE SHALL BE USED.
13. PROVIDE #12 AWG STRANDED (19/25) THHN COPPER COLOR CODED WIRE FROM TEST SWITCH/METER SOCKET METERING COMPARTMENT INTO C. T. COMPARTMENT. LEAVE 5 FT. OF WIRE FOR FUTURE CONNECTION TO CURRENT TRANSFORMERS. ALL WIRING IN ACCORDANCE WITH CON EDISON MES #195, REV. 9.
14. SECURITY HARDWARE TO BE PROVIDED FOR CT CABINET DOOR AND METER ENCLOSURE - TO BE INSTALLED BY CONTRACTOR.
15. THIS STANDARD SHALL NOT BE USED AS A DESIGN CRITERIA. DIMENSIONS SHOWN ARE RECOMMENDED MINIMUMS ONLY. LARGER DIMENSIONS SHALL BE USED WHERE REQUIRED BY CODE.

**INSTALLATION DETAILS:**

1. MAXIMUM CABLE SIZES: 1 SET OF 500 KCMILS OR 2 SETS OF 4/0 AWG CU. LUG SIZE RANGES FROM 600 MCM - #4 OR (2) 250 KCMILS - 1/0 IF AL. CABLES ARE USED.
2. USE ONLY MANUFACTURER'S APPROVED LUG PROVIDED.
3. 1 FT. CLEARANCE REQUIRED ON THE LEFT (HINGED) SIDE OF THE CABINET TO A WALL OR OBSTRUCTION FOR METER CLEARANCE. MINIMUM OF 6" CLEARANCE ON THE RIGHT (NON HINGED) SIDE OF THE CABINET, NEEDED FOR INSTALLATION OF LOCKING DEVICES. SPACE BETWEEN ADJACENT CABINETS NO LESS THAN 6 INCHES. (SEE INSTALLATION DETAIL).
4. 265/460 VOLT SERVICE REQUIRES A DISCONNECT SWITCH BEFORE THE CT CABINET.
5. METER ENCLOSURES MOUNTED REMOTELY MUST CONFORM WITH MES 195 IN WIRE SIZING CONNECTIONS, COLOR CODING, ETC.
6. FINAL CONNECTIONS PER MES 195 - FOR 4 WIRE INSTALLATIONS.



**CON EDISON 800 AMP TRANS "S"  
CURRENT TRANSFORMER CABINET (NEMA 3R)  
600 AMP. & 800 AMP., 240V & 480V AC RATED  
CATALOG NUMBER TS-800-208, TS-800-480**



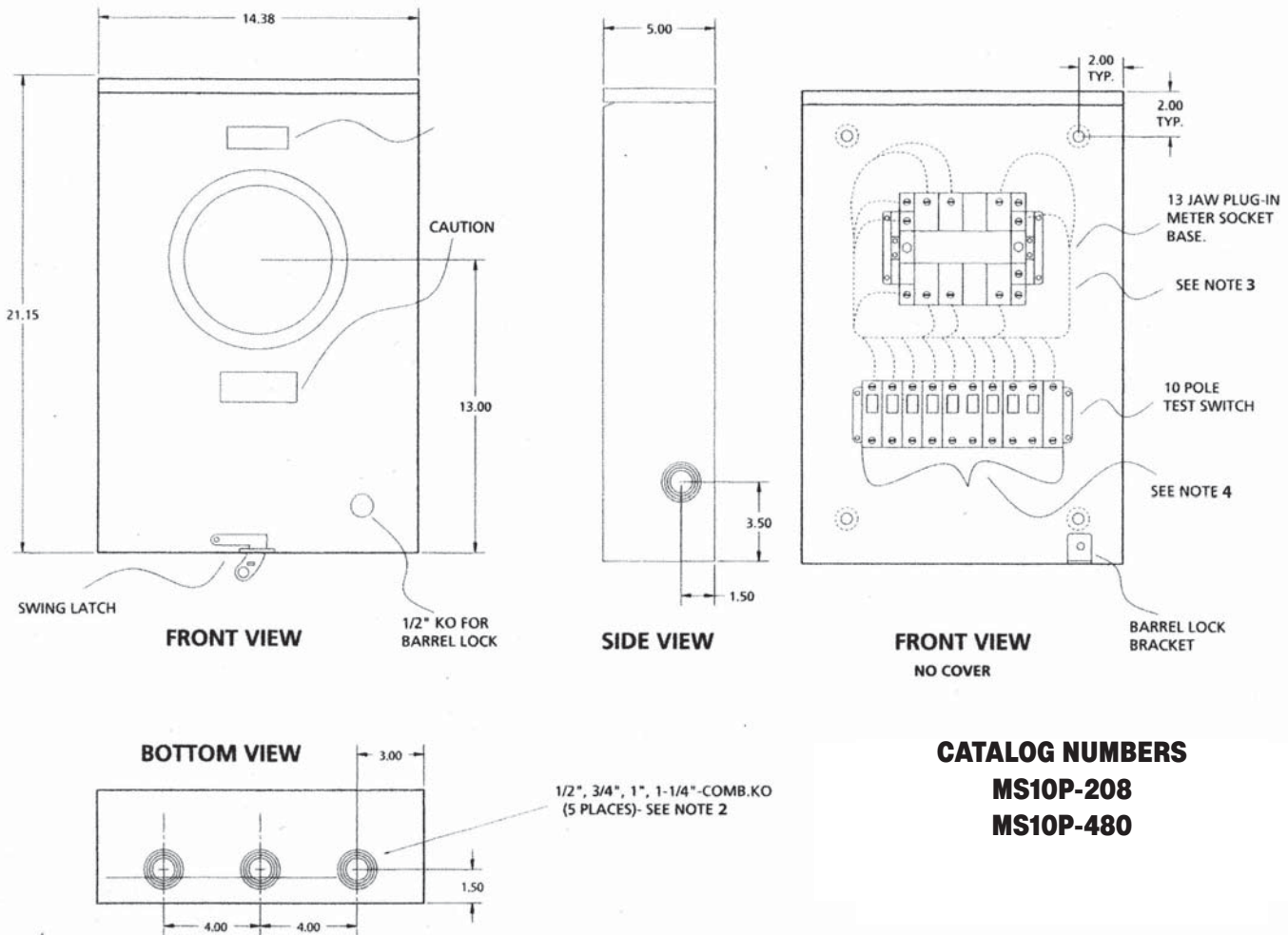
**BOTTOM VIEW**

**TOP VIEW**

- CABINET SHALL BE RATED NEMA 3R AND SHALL BE CONSTRUCTED FROM CODE GAUGE GALVANIZED OR GALVANNEALED STEEL.
- BUS BAR SHALL BE SILVER OR TIN PLATED AND SHALL BE SIZED PER THE NEC.
- BUS BAR SHALL BE MOUNTED IN THE CABINET BY MEANS OF STANDOFF INSULATORS OR INSULATED MOUNTING BRACKETS. INSULATING MATERIAL SHALL CONFORM TO THE APPLICABLE SECTIONS OF UL 746 AND UL 94. THE CABINET SHALL BE UL, CON EDISON AND N.Y.C. ADVISORY BOARD APPROVED.
- THE RIGHT HAND SIDE OF THE CABINET SHALL ALLOW FOR LINE AND LOAD CABLES, TO ENTER AND EXIT THROUGH THE TOP OR THE BOTTOM OF THE CABINET. THIS SPACE SHALL ALLOW FOR THE CABLES TO MEET THE MINIMUM BENDING RADIUS TO NEAREST PHASE OR NEUTRAL BUS. AS PER THE NEC.
- THE SHORT CIRCUIT WITHSTAND CAPABILITY OF THE CABINET ASSEMBLY SHALL BE RATED AT 50,000 RMS SYMMETRICAL AMPERES.
- CABINET DESIGN SHALL HAVE PROVISIONS FOR A SOLID DOOR TO ALLOW FOR THE METER ENCLOSURE TO BE MOUNTED REMOTELY FROM THE CABINET.
- METERING COMPARTMENT TO BE TOTALLY ISOLATED FROM CT COMPARTMENT FOR REMOTE USE. USE CAT. NO. RTS800-208 WITH MS10P-208 OR RTS800-480 WITH MS10P-480. ALL TO CONFORM TO MES # 195.
- MANUFACTURER SHALL FURNISH AND INSTALL 1/2-13 STUDS WITH SPLIT LOCK WASHERS AND HEX NUTS FOR CT MOUNTING.
- USE ONLY MANUFACTURER'S APPROVED LUG PROVIDED. (2) LUGS PER TERMINAL, EACH RATED FOR (1) 600 MCM-#4 OR (2) 250 MCM -#4 CABLES.
- ONLY FACTORY PREFABRICATED KNOCKOUTS ON THE ENCLOSURE SHALL BE USED**
- PROVIDE WIRED TRANS "S" UNIT WITH #12 AWG STRANDED (19/25) THHN COPPER COLOR CODED WIRE FROM THE TEST SWITCH TO THE SOCKET ASSEMBLY AND FROM THE TEST SWITCH METERING COMPARTMENT INTO THE CT COMPARTMENT. LEAVE 7 FT. OF WIRE FOR FUTURE CONNECTION TO THE CURRENT TRANSFORMERS. USE EITHER HOOK OR RING TYPE TINNED COPPER LUGS FOR TERMINATIONS. ALL WIRING IN ACCORDANCE WITH CON EDISON MES #195, EXCEPT AS NOTED IN MES #751 FOR FORM 9S METER SOCKET.
- SECURITY HARDWARE TO BE PROVIDED FOR CT CABINET DOOR AND METER ENCLOSURE COVER (TO BE INSTALLED BY CONTRACTOR).
- 265/460 VOLT SERVICE REQUIRES A DISCONNECT SWITCH BEFORE THE CT CABINET.

**CON EDISON "S" PLUG-IN METER SOCKET  
AND TEST SWITCH**

**30 AMP. CONT., 240V & 480V AC RATED (NEMA 3R)**



**CATALOG NUMBERS**

**MS10P-208**

**MS10P-480**

1. CABINET SHALL BE RATED NEMA 3R AND SHALL BE CONSTRUCTED FROM CODE GAUGE GALVANIZED OR GALVANNEALED STEEL.
2. **ONLY FACTORY PREFABRICATED KNOCKOUTS ON THE ENCLOSURE SHALL BE USED.**
3. PROVIDED PREWIRED FROM TEST SWITCH TO METER BASE IN ACCORD WITH MES #195, EXCEPT AS NOTED IN MES #751, FOR FORM 9S METER SOCKET.
4. WIRE PROVIDED AND INSTALLED BY CONTRACTOR.



## CON EDISON TRANS - A ENCLOSURES



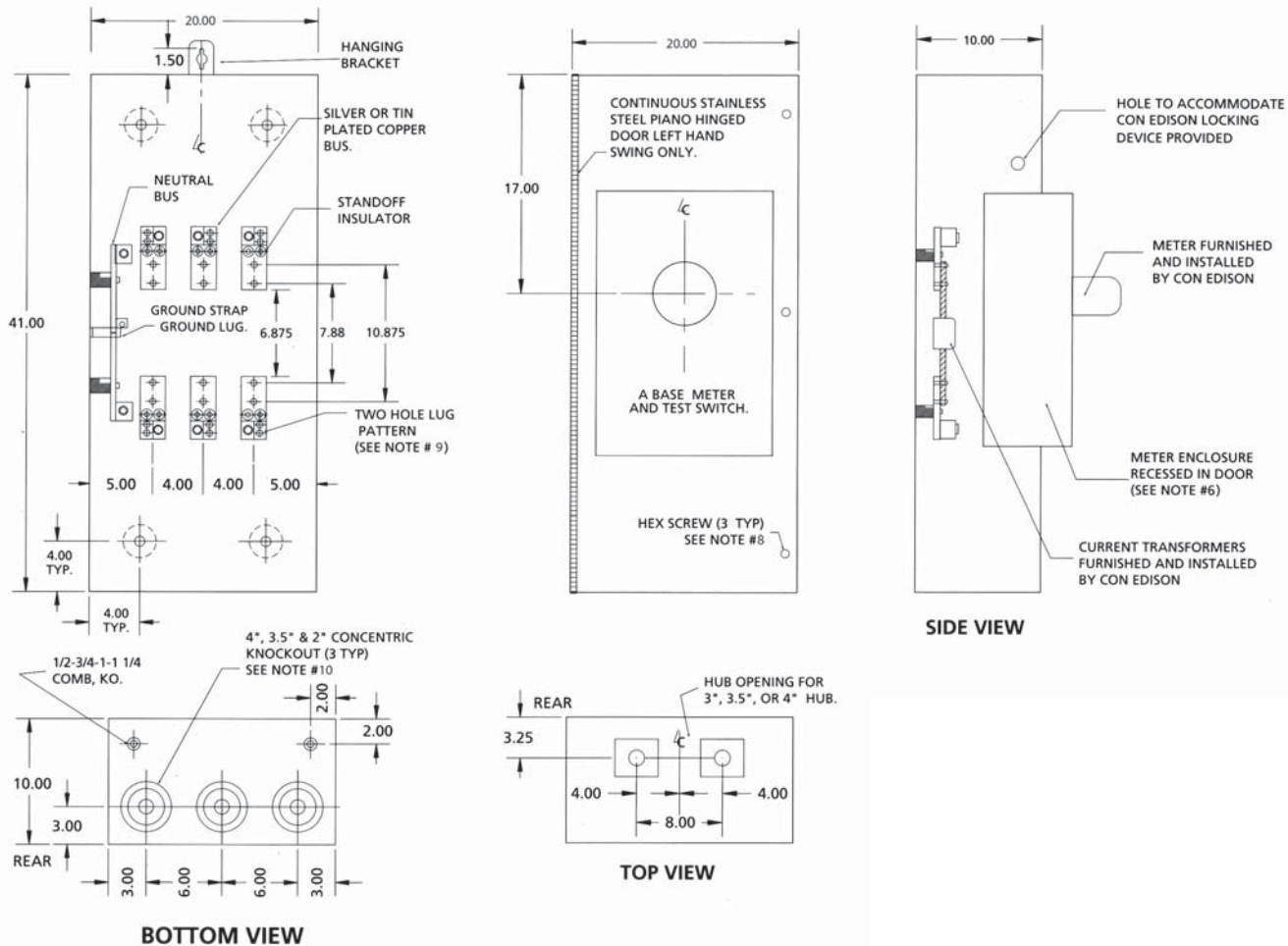
Con Ed Spec.	Navtech Cat. No	Size Description	Volts	Amps	List Price
745	TA-400-240	41x20x10	600	200-400 3PH	\$1,710.00
745	TA-400-480	41x20x10	600	200-400 3PH	1,740.00
750	TA-800-240	48x24x10	600	400-800 3PH	2,110.00
750	TA-800-480	48x24x10	600	400-800 3PH	2,200.00
	RT10P-240	21x14x5	240		295.00
	RT10PA-480	21x14x5	480		310.00
3" HUB	3" HUB				24.00
3 1/2" HUB	3 1/2" HUB				28.00
4" HUB	4" HUB				30.00
TS-TCP	TOP CLOSING PLATE				16.00

\*Three Phase Units shall be modified in the field to Single Phase as per Con Edison's Inspectors specifications.

**Phone: (718) 272-4222 • Fax: (718) 272-4226**  
**navtechelect@yahoo.com**

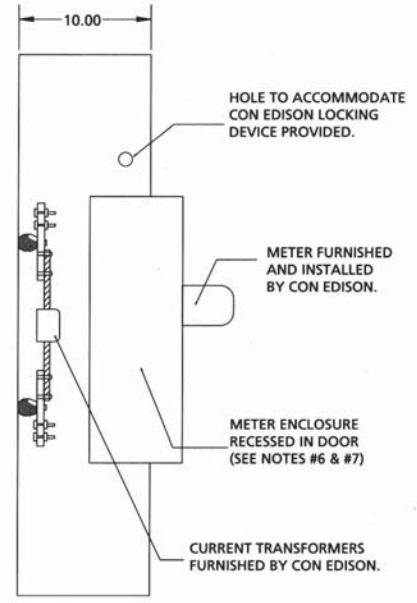
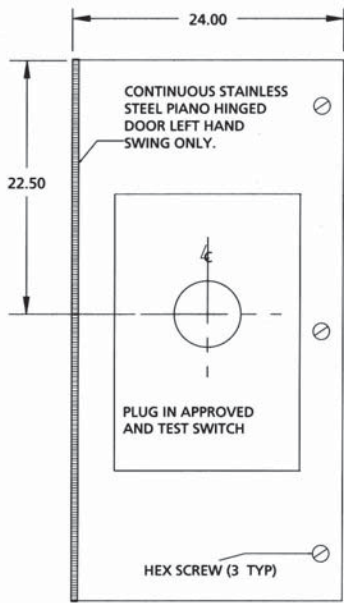
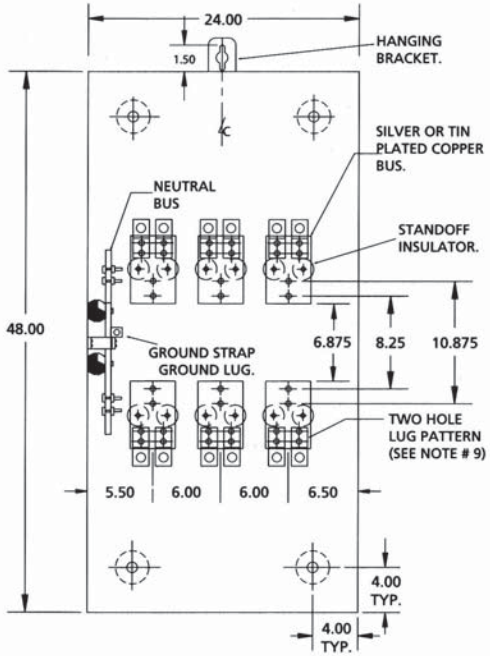


**CON EDISON 400 AMPERE TRANS "A"  
CURRENT TRANSFORMER CABINET (NEMA 3R)  
200 AMP. & 400 AMP., 240 V & 480V AC RATED  
CATALOG NUMBER TA-400-240 TA-400-480**

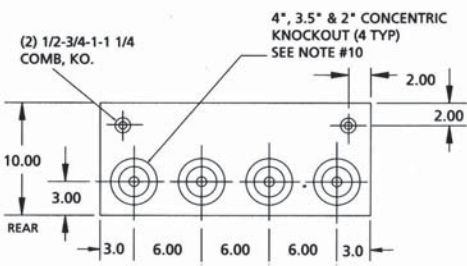


- CABINET SHALL BE RATED NEMA 3R AND SHALL BE CONSTRUCTED FROM CODE GAUGE GALVANIZED OR GALVANNEALED STEEL.
- BUS BAR SHALL BE SILVER OR TIN PLATED AND SHALL BE SIZED PER THE NEC.
- BUS BAR SHALL BE MOUNTED IN THE CABINET BY MEANS OF STANDOFF INSULATORS OR INSULATED MOUNTING BRACKETS. INSULATING MATERIAL SHALL CONFORM TO THE APPLICABLE SECTIONS OF UL 746 AND UL 94. CABINET SHALL BE UL APPROVED.
- THE RIGHT HAND SIDE OF THE CABINET SHALL ALLOW FOR LINE AND LOAD CABLES TO ENTER AND EXIT THROUGH THE TOP OR THE BOTTOM OF THE CABINET. THIS SPACE SHALL ALLOW FOR THE CABLES TO MEET THE MINIMUM BENDING RADIUS TO NEAREST PHASE OR NEUTRAL BUS AS PER THE NEC.
- THE SHORT CIRCUIT WITHSTAND CAPABILITY OF THE CABINET ASSEMBLY SHALL BE A MAXIMUM OF 50,000 RMS SYMMETRICAL AMPERES.
- CABINET DESIGN SHALL HAVE PROVISIONS FOR A SOLID DOOR TO ALLOW FOR THE METER ENCLOSURE TO BE MOUNTED REMOTELY FROM THE CABINET.
- HEX HEAD OR THUMB SCREWS MAY BE FURNISHED INSTEAD OF A THREE POINT LATCH.
- MANUFACTURER SHALL FURNISH AND INSTALL  $\frac{1}{2}$ -13 STUDS WITH SPLIT LOCK WASHERS AND HEX NUTS FOR CT MOUNTING.
- USE ONLY MANUFACTURER'S APPROVED LUG PROVIDED. EACH LUG IS RATED FOR (1) 600 MCM-#4 OR (2) 250MCM-#4 CABLES.
- ONLY FACTORY PREFABRICATED KNOCKOUTS ON THE ENCLOSURE SHALL BE USED.**
- PROVIDE #12 AWG SOLID WHITE INSULATED COPPER WIRE, 12" LONG LEFT ABOVE THE METERING TEST SWITCH, WIRE TO BE FORMED AND MOUNTED ON TEST SWITCH.
- PROVIDE #12 AWG STRANDED (19/25) THHN COPPER COLOR CODED WIRE FROM TEST SWITCH METERING COMPARTMENT INTO CT COMPARTMENT. LEAVE 5 FT. OF WIRE FOR FUTURE CONNECTION TO CURRENT TRANSFORMERS. ALL WIRING IN ACCORDANCE WITH CON EDISON MES #195.
- SECURITY HARDWARE TO BE PROVIDED FOR CT CABINET DOOR AND METER ENCLOSURE COVER (TO BE INSTALLED BY CONTRACTOR).
- 265/460 VOLT SERVICE REQUIRES A DISCONNECT SWITCH BEFORE THE CT CABINET.

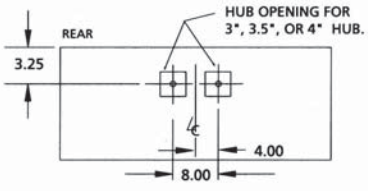
**CON EDISON 800 AMPERE TRANS "A"  
CURRENT TRANSFORMER CABINET (NEMA 3R)  
600 AMP. & 800 AMP., 240V AC & 480V AC RATED  
CATALOG NUMBER TA-800-240 TA-800-480**



**SIDE VIEW**



**BOTTOM VIEW**



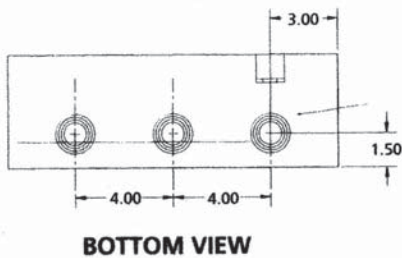
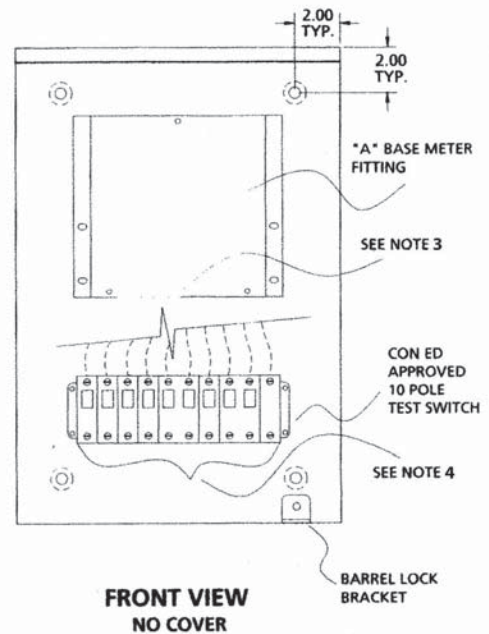
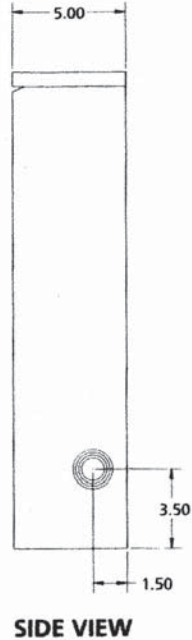
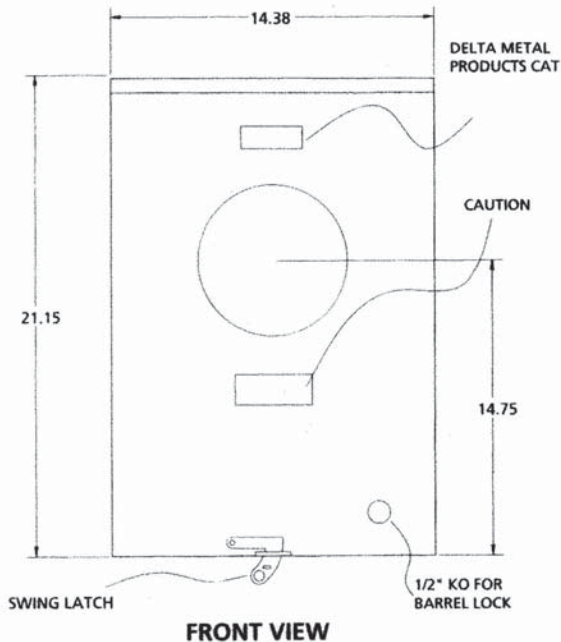
**TOP VIEW**

**CON EDISON SPEC. #MES 750  
CATALOG NUMBERS  
TA-800-240  
RT10P-A**

1. CABINET SHALL BE RATED NEMA 3R AND SHALL BE CONSTRUCTED FROM CODE GAUGE GALVANIZED OR GALVANNEALED STEEL.
2. BUS BAR SHALL BE SILVER OR TIN PLATED AND SHALL BE SIZED PER THE NEC.
3. BUS BAR SHALL BE MOUNTED IN THE CABINET BY MEANS OF STANDOFF INSULATORS OR INSULATED MOUNTING BRACKETS. INSULATING MATERIAL SHALL CONFORM TO THE APPLICABLE SECTIONS OF UL 746 AND UL 94. CABINET SHALL BE UL APPROVED.
4. THE RIGHT HAND SIDE OF THE CABINET SHALL ALLOW FOR LINE AND LOAD CABLES TO ENTER AND EXIT THROUGH THE TOP OR THE BOTTOM OF THE CABINET. THIS SPACE SHALL ALLOW FOR THE CABLES TO MEET THE MINIMUM BENDING RADIUS TO NEAREST PHASE OR NEUTRAL BUS AS PER THE NEC.
5. THE SHORT CIRCUIT WITHSTAND CAPABILITY OF THE CABINET ASSEMBLY SHALL BE A MAXIMUM OF 50,000 RMS SYMMETRICAL AMPERES.
6. CABINET DESIGN SHALL HAVE PROVISIONS FOR A SOLID DOOR TO ALLOW FOR THE METER ENCLOSURE TO BE MOUNTED REMOTELY FROM THE CABINET.
7. HEX HEAD OR THUMB SCREWS MAY BE FURNISHED INSTEAD OF A THREE POINT LATCH.
8. MANUFACTURER SHALL FURNISH AND INSTALL \_13 STUDS WITH SPLIT LOCK WASHERS AND HEX NUTS FOR CT MOUNTING.
9. USE ONLY MANUFACTURER'S APPROVED LUG PROVIDED. EACH LUG IS RATED FOR (1) 600 MCM-#4 OR (2) 250MCM-#4 CABLES.
10. **ONLY FACTORY PREFABRICATED KNOCKOUTS ON THE ENCLOSURE SHALL BE USED.**
11. PROVIDE #12 AWG SOLID WHITE INSULATED COPPER WIRE, 12' LONG LEFT ABOVE THE METERING TEST SWITCH, WIRE TO BE FORMED AND MOUNTED ON TEST SWITCH.
12. PROVIDE #12 AWG STRANDED (19/25) THHN COPPER COLOR CODED WIRE FROM TEST SWITCH METERING COMPARTMENT INTO CT COMPARTMENT. LEAVE 5 FT. OF WIRE FOR FUTURE CONNECTION TO CURRENT TRANSFORMERS. ALL WIRING IN ACCORDANCE WITH CON EDISON MES #195.
13. SECURITY HARDWARE TO BE PROVIDED FOR CT CABINET DOOR AND METER ENCLOSURE COVER (TO BE INSTALLED BY CONTRACTOR).
14. 265/460 VOLT SERVICE REQUIRES A DISCONNECT SWITCH BEFORE THE CT CABINET.



**CON EDISON "A" BASE METER SOCKET  
AND TEST SWITCH  
30 AMP. CONT., 240V & 480V AC RATED (NEMA 3R)**



1/2", 3/4", 1", 1-1/4" - COMB. KO  
(5 PLACES)- SEE NOTE 2

**CATALOG NUMBERS  
RT10PA-240  
RT10PA-480**

1. CABINET SHALL BE RATED NEMA 3R AND SHALL BE CONSTRUCTED FROM CODE GAUGE GALVANIZED OR GALVANNEALED STEEL.
2. **ONLY FACTORY PREFABRICATED KNOCKOUTS ON THE ENCLOSURE SHALL BE USED.**
3. PROVIDED WITH #12 AWG SOLID WHITE INSULATED COPPER WIRE, 12" LONG ABOVE THE METERING TEST SWITCH. WIRE TO BE FORMED AND MOUNTED ON "A" BASE METER AT TIME OF INSTALLATION.
4. WIRE PROVIDED AND INSTALLED BY CONTRACTOR.



## CON EDISON COPPER DETAIL BOXES/ CURRENT TRANSFORMER CABINETS



Con Ed Spec	Navtech Cat#	AMPS	Size	List Price
EO-9525-B	9525	400	48x24x18	\$2400.00
EO-9525-B	9525	400	54x24x18	2400.00
EO-9072-B	9072	800	68x26x18	2720.00
EO-9072-B	9072	1200	68x26x18	3170.00
EO-9073-B	9073	2000	78x34x18	3170.00
142	CT-36	400	27x36x10	790.00
142	CT-44	400	27x44x10	980.00
298	298CT	800	72x32x12	2970.00
298	298CT	1200	72x32x12	3530.00
377	377CT	As Required	As Required	CALL
9073-B	9073		84"	
9073-B	9073		92"	

## CON EDISON TRANS-S/SWITCH COMBINATION UNITS



Con Ed Spec.	Navtech Cat. No	Size Description	Volts	Amps	List Price
745	TS/SW 400-240-B	70x20x11	240	200-400	\$4,640.00
745	TS/SW 400-240-T	65x20x11	240	200-400	4,410.00
745	TS/SW 400-480-B	70x21x11	480	200-400	4,980.00
745	TS/SW 400-480-T	76x20x12	480	200-400	4,760.00
750	TS/SW 800-240-B	82x24x12	240	400-800	7,000.00
750	TS/SW 800-240-T	76x20x12	240	400-800	6,650.00
750	TS/SW 800-480-B	82x24x12	480	400-800	7,430.00
750	TS/SW 800-480-T	76x20x12	480	400-800	7,090.00