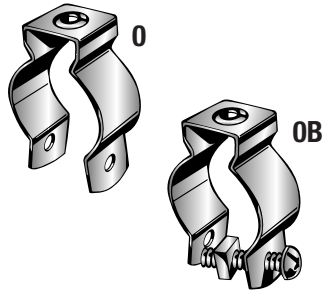
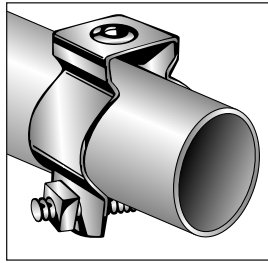


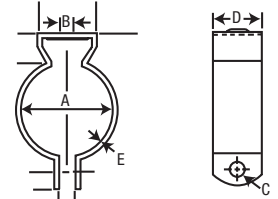
CONDUIT HANGERS



- Our standard conduit hangers come zinc-plated or made from 304 stainless steel.
- Available with or without bolt and nut attached.
- The original conduit hanger available for 1/2" through 5" conduit.

Available made from aluminum, brass or steel that has been hot dip galvanized or copper-plated. Call customer service for pricing and minimum order quantities.

See page 74 or 230 to order bolts and nuts separately.



| Fits Rigid/IMC | Fits EMT | Nom. Pipe O.D. A | B | C | D | E | W/O Bolt Attached Part # | With Bolt Attached Part # | Std Pkg |
|----------------|----------|---------------------|------|------|-------|------|--------------------------|---------------------------|---------|
| Zinc Plated | | | | | | | | | |
| 3/8-1/2 | 1/2 | 0.675-0.840 | 1/4 | 1/4 | .750 | .050 | 0 ★ | 0B* | 100 |
| 3/4 | 3/4 | 0.922-1.050 | 1/4 | 1/4 | .875 | .050 | 1 ★ | 1B* | 100 |
| 1 | 1 | 1.163-1.315 | 1/4 | 1/4 | .875 | .050 | 2 ★ | 2B* | 100 |
| — | 1 1/4 | 1.510 | 1/4 | 1/4 | .875 | .050 | 2 1/2 ★ | 2 1/2 B* | 100 |
| 1 1/4 | 1 1/2 | 1.660-1.740 | 1/4 | 1/4 | .875 | .050 | 3 ★ | 3B* | 100 |
| 1 1/2 | — | 1.883-1.900 | 5/16 | 1/4 | 1.000 | .060 | 4 ★ | 4B* | 100 |
| 2 | 2 | 2.197-2.375 | 5/16 | 1/4 | 1.250 | .060 | 5 ★ | 5B* | 50 |
| 2 1/2 | 2 1/2 | 2.857-2.875 | 5/16 | 1/4 | 1.250 | .060 | 6 ★ | 6B* | 50 |
| 3 | 3 | 3.476-3.500 | 5/16 | 5/16 | 1.250 | .060 | 7 ★ | 7B* | 25 |
| 3 1/2 | 3 1/2 | 3.971-4.000 | 5/16 | 5/16 | 1.250 | .060 | 8 ★ | 8B* | 25 |
| 4 | 4 | 4.466-4.500 | 1/2 | 1/2 | 1.750 | .080 | 9 ★ | 9B* | 10 |
| 5 | — | 5.563 | 1/2 | 1/2 | 1.750 | .080 | 10 ★ | 10B* | 10 |

* Made in USA per Federal Trade Commission 1998

Continued on next page.

★ Made in USA