

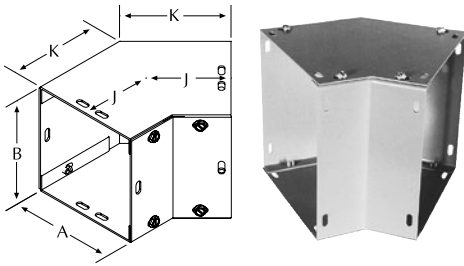
Wireway Fittings

For use with GSC1 and GHC1 wireway

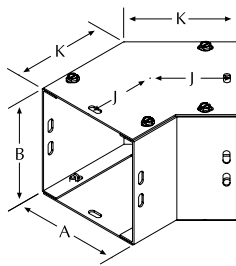
L45C & L45S | 45° Elbows

Similar to the 90° elbow in design and function, only used in 45° angle applications.

L45C (side access)



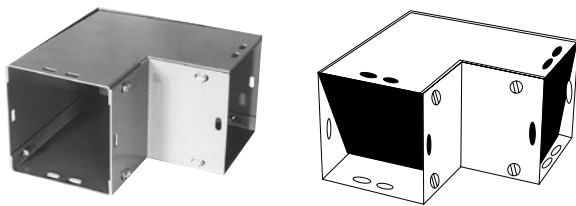
L45S (top access)



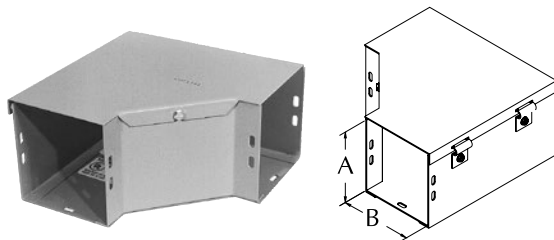
90° Elbows

These elbows are designed to turn a 90° corner in a wireway run.

90° Elbows (for Screw Covers)*



90° Elbows (for Hinge Covers)*



*Note: Screws not included with fittings. Fitting attachment screws are included with straight sections of wireway.

Utility requirements for this equipment may vary. Always consult the serving utility for their requirements before ordering or installing equipment.

| Catalog Number | Product Family | UPC # (7-84572) | Weight (lbs) | Std. Pkg. | Size |
|-------------------|----------------|-----------------|--------------|-----------|-----------|
| 45° Elbows | | | | | |
| 22L45C | GFIT | 26419 | 3.6 | 2 | 2.5 x 2.5 |
| 22L45C-NP | GFIT | 26420 | 3.6 | 2 | 2.5 x 2.5 |
| 22L45S | GFIT | 26432 | 3.6 | 2 | 2.5 x 2.5 |
| 22L45S-NP | GFIT | 26433 | 3.6 | 2 | 2.5 x 2.5 |
| 44L45C | GFIT | 10689 | 7.1 | 2 | 4 x 4 |
| 44L45S | GFIT | 10690 | 7.1 | 2 | 4 x 4 |
| 66L45C | GFIT | 10852 | 10.8 | 2 | 6 x 6 |
| 66L45C-NP | GFIT | 15499 | 10.8 | 2 | 6 x 6 |
| 66L45S | GFIT | 10853 | 10.8 | 2 | 6 x 6 |
| 66L45S-NP | GFIT | 15500 | 10.8 | 2 | 6 x 6 |
| 88L45C | GFIT | 10991 | 14.4 | 2 | 8 x 8 |
| 88L45C-NP | GFIT | 15510 | 14.4 | 2 | 8 x 8 |
| 88L45S | GFIT | 10992 | 14.4 | 2 | 8 x 8 |
| 1010L45C | GFIT | 10054 | 16 | 2 | 10 x 10 |
| 1010L45C-NP | GFIT | 15460 | 16 | 2 | 10 x 10 |
| 1010L45S | GFIT | 10055 | 16 | 2 | 10 x 10 |
| 1010L45S-NP | GFIT | 15461 | 16 | 2 | 10 x 10 |
| 1212L45C | GFIT | 10167 | 23 | 2 | 12 x 12 |
| 1212L45C-NP | GFIT | 15470 | 23 | 2 | 12 x 12 |
| 1212L45S | GFIT | 10168 | 23 | 2 | 12 x 12 |
| 1212L45S-NP | GFIT | 15471 | 23 | 2 | 12 x 12 |
| 90° Elbows | | | | | |
| 22L90C | GFIT | 26465 | 3.6 | 2 | 2.5 x 2.5 |
| 22L90C-NP | GFIT | 26466 | 3.6 | 2 | 2.5 x 2.5 |
| 22L90S | GFIT | 26467 | 3.6 | 2 | 2.5 x 2.5 |
| 22L90S-NP | GFIT | 26468 | 3.6 | 2 | 2.5 x 2.5 |
| 44L90C | GFIT | 10691 | 7 | 2 | 4 x 4 |
| 44L90C-NP | GFIT | 15521 | 7 | 2 | 4 x 4 |
| 44L90S | GFIT | 10692 | 7 | 2 | 4 x 4 |
| 44L90S-NP | GFIT | 15522 | 7 | 2 | 4 x 4 |
| 66L90C | GFIT | 10854 | 9 | 2 | 6 x 6 |
| 66L90C-NP | GFIT | 15524 | 9 | 2 | 6 x 6 |
| 66L90S | GFIT | 10855 | 9 | 2 | 6 x 6 |
| 66L90S-NP | GFIT | 15525 | 9 | 2 | 6 x 6 |
| 88L90C | GFIT | 10993 | 13 | 2 | 8 x 8 |
| 88L90C-NP | GFIT | 15527 | 13 | 2 | 8 x 8 |
| 88L90S | GFIT | 10994 | 13 | 2 | 8 x 8 |
| 88L90S-NP | GFIT | 15528 | 13 | 2 | 8 x 8 |
| 1010L90C | GFIT | 10056 | 15 | 2 | 10 x 10 |
| 1010L90C-NP | GFIT | 15515 | 15 | 2 | 10 x 10 |
| 1010L90S | GFIT | 10057 | 15 | 2 | 10 x 10 |
| 1010L90S-NP | GFIT | 15516 | 15 | 2 | 10 x 10 |
| 1212L90C | GFIT | 10169 | 22 | 2 | 12 x 12 |
| 1212L90C-NP | GFIT | 15518 | 22 | 2 | 12 x 12 |
| 1212L90S | GFIT | 10170 | 22 | 2 | 12 x 12 |
| 1212L90S-NP | GFIT | 15519 | 22 | 2 | 12 x 12 |

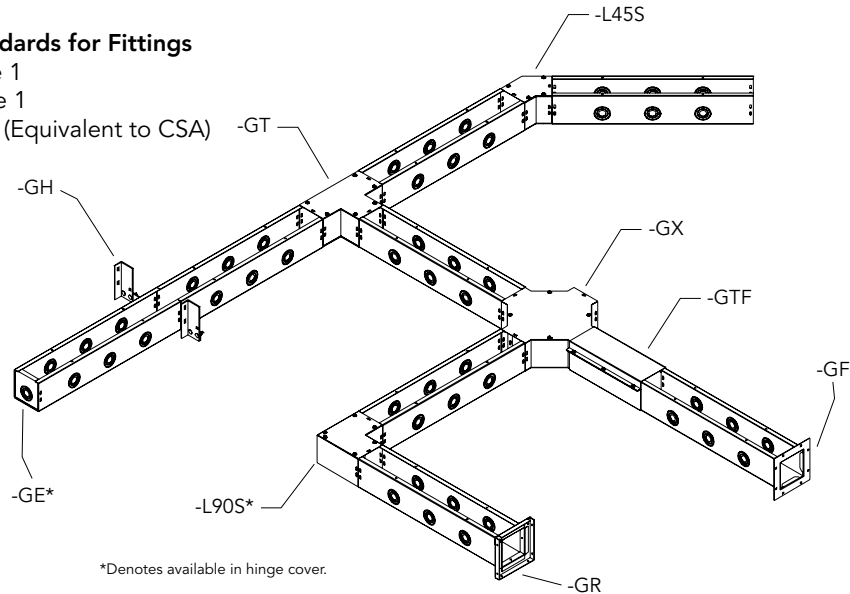


Wireway Fittings

For use with GSC1 and GHC1 wireway

Industry Standards for Fittings

- NEMA Type 1
- UL 870 Type 1
- CUL Type 1 (Equivalent to CSA)



*Denotes available in hinge cover.

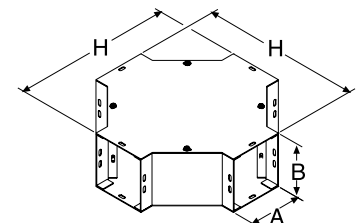
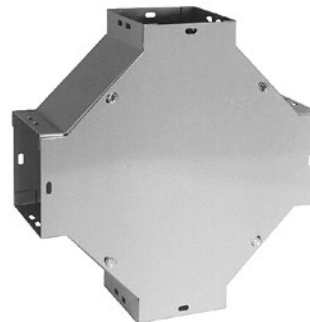
Dimensions for product drawings on pages 70–75

| A x B Inches (mm) | E | F | G | H | J | K | N | P | V | U |
|------------------------------|----------------|----------------|----------------|----------------|---------------|---------------|----------------|----------------|----------------|----------------|
| 3.00 x 3.00 (76 x 76) | 5.06 (129) | 5.06 (129) | 6.06 (154) | 11.25 (286) | 2.58 (66) | 3.20 (81) | 11.00 (279) | 4.63 (118) | 9.00 (229) | 4.62 (117) |
| 4.00 x 4.00 (102 x 102) | 6.06 (154) | 6.06 (154) | 7.06 (179) | 12.25 (311) | 2.80 (71) | 3.63 (92) | 13.25 (337) | 13.25 (337) | 10.00 (254) | 5.13 (130) |
| 4.00 x 6.00 (102 x 152) | 6.06 (154) | 8.06 (205) | 8.00 (203) | — | — | — | — | — | 12.00 (305) | 5.06 (129) |
| 6.00 x 6.00 (152 x 152) | 8.06 (205) | 8.06 (205) | 10.00 (254) | 14.25 (362) | 3.21 (82) | 4.45 (113) | 17.75 (451) | 7.63 (194) | 14.00 (356) | 7.06 (179) |
| 8.00 x 8.00 (203 x 203) | 10.06 (306) | 10.06 (306) | 12.00 (305) | 16.25 (413) | 3.62 (92) | 5.28 (134) | 22.25 (565) | 9.63 (245) | 16.00 (406) | 8.06 (205) |
| 10.00 x 10.00 (254 x 254) | 12.06 (306) | 12.06 (306) | 14.00 (356) | 18.25 (464) | 4.04 (103) | 6.11 (155) | 25.63 (651) | 11.63 (295) | 18.00 (457) | 9.06 (230) |
| 12.00 x 12.00 (305 x 305) | 14.06 (357) | 14.06 (357) | 16.00 (406) | 20.25 (514) | 4.42 (112) | 6.91 (176) | 30.13 (765) | 13.63 (346) | 20.00 (508) | 10.06 (256) |

GX | Crosses*

The cross fitting is for connecting 4 merging wireway runs from 2 different directions.

| Catalog Number | Product Family | UPC # (7-84572) | Weight (lbs) | Std. Pkg. | Size |
|----------------|----------------|-----------------|--------------|-----------|-----------|
| 22GX | GFIT | 26469 | 4.3 | 1 | 2.5 x 2.5 |
| 22GX-NP | GFIT | 26470 | 4.3 | 1 | 2.5 x 2.5 |
| 44GX | GFIT | 10688 | 6.3 | 1 | 4 x 4 |
| 66GX | GFIT | 10851 | 8.3 | 1 | 6 x 6 |
| 88GX | GFIT | 10990 | 13.3 | 1 | 8 x 8 |
| 1010GX | GFIT | 17214 | 14 | 1 | 10 x 10 |
| 1212GX | GFIT | 17128 | 15 | 1 | 12 x 12 |



Utility requirements for this equipment may vary. Always consult the serving utility for their requirements before ordering or installing equipment.