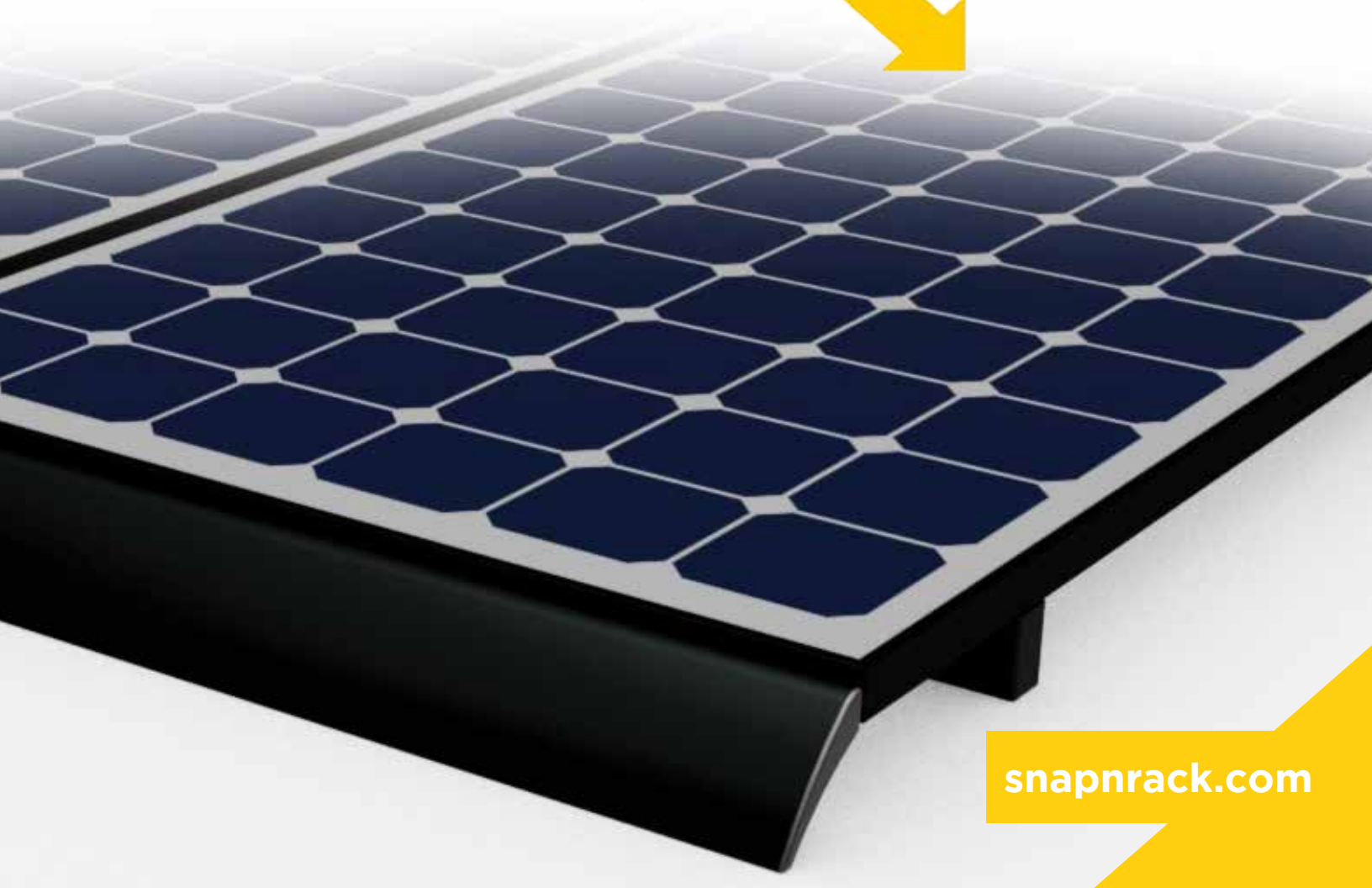


# Price List Q1 2017

*Featuring New Pricing for 2017*



# Notification of Price Reduction

---

Thanks to improvements in our manufacturing efficiencies and supply chain optimization we are happy to offer reduced pricing for 2017. This decision bolsters SnapNrack's commitment to achieving the lowest cost of energy through use of the highest quality products available. These price reductions are effective on December 1, 2016.

## Table of Contents

---

<b>SnapNrack Roof Attachments</b>	<b>1</b>
<b>SnapNrack Rails</b>	<b>7</b>
<b>SnapNrack Module Attachments</b>	<b>9</b>
<b>SnapNrack Accessories</b>	<b>10</b>
<b>SnapNrack Ground Mount</b>	<b>13</b>

---

**Quality.  
Performance.  
Innovation.**

---

SnapNrack solutions are focused on simplifying the installation experience through intuitive products and the best wire management in the industry.

# SnapNrack Roof Attachments

## L FOOT FLASHING KITS

Composition L Foot mounts provide fully flashed attachment with no shingle cutting required. Slotted L Foot provides adjustability for array leveling.

Description	Item Number	MSRP	Standard Package Qty	Standard Package Wt
<b>Black L Foot, Black Galv Flashing, and Base Kit</b>	242-92051	\$12.35	20 Kits	25 lbs
<b>Silver L Foot, Black Galv Flashing and Base Kit</b>	242-92050	\$11.63	20 Kits	25 lbs
<b>Black L Foot, Black Alum Flashing and Base Kit</b>	242-92048	\$14.96	20 Kits	18 lbs
<b>Silver L Foot, Silver Alum Flashing and Base Kit</b>	242-92047	\$12.58	20 Kits	18 lbs



**BLACK L FOOT, BLACK GALV FLASHING, & BASE KIT**  
242-92051



L Foot Flashing Kits include a L Foot Flashing, L Foot Base and the Composition L Foot.

## L FOOT ACCESSORIES

The SnapNrack L Foot is simple to install and works seamlessly with our rail and mounting system.

Description	Item Number	MSRP	Standard Package Qty	Standard Package Wt
<b>L Foot Flashing, 12" x 12", Black Galv</b>	232-01060	\$5.93	20 EA	17 lbs
<b>L Foot Flashing, 12" x 12", Black Alum</b>	232-01151	\$8.55	20 EA	10 lbs
<b>L Foot Flashing, 12" x 12", Silver Alum</b>	232-01150	\$6.88	20 EA	10 lbs
<b>L Foot Base (includes flange nut)</b>	242-00016	\$3.08	20 EA	3.6 lbs
<b>L Foot Base and Black Galv Flashing Kit (no L Foot)</b>	242-92049	\$8.55	20 Kits	21 lbs
<b>Black Composition L Foot (92 Deg)</b>	242-09015	\$4.27	20 EA	4.4 lbs
<b>Silver Composition L Foot (92 Deg)</b>	242-09005	\$3.56	20 EA	4.4 lbs
<b>Black All Purpose L Foot (90 Deg)</b>	242-09020	\$4.98	20 EA	4.4 lbs
<b>Silver All Purpose L Foot (90 Deg)</b>	242-09019	\$4.27	20 EA	4.4 lbs
<b>1" Standoff Spacer w/ Connector Screw</b>	242-92081	\$1.66	20 EA	1.6 lbs



**SILVER COMPOSITION L FOOT (92 DEG)**  
242-09005



**BLACK ALL PURPOSE L FOOT (90 DEG)**  
242-09020



**L FOOT BASE (INCLUDES FLANGE NUT)**  
242-00016

# SnapNrack Roof Attachments

## METAL ROOF BASE ATTACHMENTS

Metal Roof Base (MRB) provides robust, self-sealing attachment to metal roofs with flat mounting surfaces.

Description	Item Number	MSRP	Standard Package Qty	Standard Package Wt
<b>Metal Roof Base with L Foot</b>	242-02037	\$9.50	20 EA	8 lbs
<b>Metal Roof Base</b>	242-02036	\$5.70	20 EA	3 lbs



**METAL ROOF BASE WITH L FOOT**  
242-02037

## SEAM CLAMP ATTACHMENTS

Seam Clamps attach directly to standing seam roofs without penetrating the metal. A single bolt attaches both Seam Clamp and L Foot.

Description	Item Number	MSRP	Standard Package Qty	Standard Package Wt
<b>Standard Base Seam Clamp with L Foot</b>	242-05150	\$11.87	20 EA	13 lbs
<b>Standard Base Seam Clamp</b>	242-05000	\$6.88	20 EA	8 lbs
<b>Wide Base Seam Clamp with L Foot</b>	242-05151	\$12.82	20 EA	14 lbs
<b>Wide Base Seam Clamp</b>	242-05001	\$7.83	20 EA	9 lbs



**STANDARD BASE SEAM CLAMP WITH L FOOT**  
242-05150



**WIDE BASE SEAM CLAMP WITH L FOOT**  
242-05151

## CORRUGATED STRADDLE BLOCK ATTACHMENTS

Corrugated Straddle Block attaches L Foot directly to structural members through corrugations without damaging the roof.

Description	Item Number	MSRP	Standard Package Qty	Standard Package Wt
<b>Corrugated Straddle Block with L Foot</b>	242-02046	\$8.31	20 Kits	11 lbs
<b>Corrugated Straddle Block</b>	232-02421	\$3.56	20 EA	6 lbs



**CORRUGATED STRADDLE BLOCK WITH L FOOT**  
242-02046

## HANGER BOLT

Description	Item Number	MSRP	Standard Package Qty	Standard Package Wt
<b>Hanger Bolt Clamp</b>	242-01102	\$5.22	20 EA	4 lbs



**HANGER BOLT CLAMP**  
242-01102

# SnapRack Roof Attachments

## TILE ROOF HOOKS

Strong, low-profile roof attachment that eliminates tile cutting and cone flashings. Universal hook features quick “drop-in” design, simply rock arm into base and secure with a single bolt.

Description	Item Number	MSRP	Standard Package Qty	Standard Package Wt
<b>Flat Tile Hook</b>	242-02045	\$14.25	20 EA	24 lbs
<b>Universal Tile Hook</b>	242-02044	\$30.16	20 EA	44 lbs
<b>Flexible Flashing Kit for 20 Flat Tile Hooks</b>	242-92001	\$133.00	1 EA	3 lbs



**UNIVERSAL TILE HOOK**  
242-02044



**FLAT TILE HOOK**  
242-02045

## STANDOFF KITS

Standoff Kits work on all roof types and excel on irregular roof surfaces.

Description	Item Number	MSRP	Standard Package Qty	Standard Package Wt
<b>Standoff Kit, 5 ½"</b>	242-92057	\$11.16	20 Kits	18 lbs
<b>Standoff Kit, 7"</b>	242-92059	\$11.87	20 Kits	20 lbs
<b>Standoff Kit, 8 ½"</b>	242-92061	\$12.58	20 Kits	22 lbs
<b>Standoff Kit, 10"</b>	242-92055	\$13.30	20 Kits	22 lbs



**STANDOFF KIT, 5 ½"**  
242-92057



Standoff Kits include a 1-Hole Base, Standoff Shaft, Rubber Rain Collar, and a Standoff Clamp Assembly.

# SnapNrack Roof Attachments

## TILT KITS

Tilt kits are used on flat roofs so that modules can capture the most sun throughout the year.

Description	Item Number	MSRP	Standard Package Qty	Standard Package Wt
<b>10° Tilt Kit w/ 5 1/2" and 10" Standoffs</b>	242-92077	\$30.16	20 Kits	51 lbs
<b>10° - 45° Variable Tilt Hardware Kit</b>	242-92083	\$10.45	20 Kits	12 lbs



Tilt Kits include two standoff mounts each comprised of a 1-Hole Base, Standoff Shaft, Rubber Rain Collar, and a Standoff Clamp and L Foot Assembly.

The 10° - 45° Variable Tilt Hardware Kit can be combined with a pair of Standoff Kits and a short piece of Standard Rail to achieve a wide range of tilt angles.



Tilt angles are relative to the roof pitch and assume a 30" North-South attachment spacing.



**10° TILT KIT  
W/ 5 1/2" & 10" STANDOFFS  
242-92077**



**10° - 45° VARIABLE TILT  
HARDWARE KIT  
242-92083**

## STANDOFF MOUNT ACCESSORIES

Build your own Standoffs and Tilt Kits with these products.

Description	Item Number	MSRP	Standard Package Qty	Standard Package Wt
<b>Standoff Base, 1-Hole</b>	242-00017	\$3.56	20 EA	6 lbs
<b>Standoff Base, 4-Hole</b>	232-02412	\$3.56	20 EA	3.6 lbs
<b>Standoff Shaft, 3"</b>	232-01048	\$1.90	20 EA	4.2 lbs
<b>Standoff Shaft, 5 1/2"</b>	232-01054	\$3.56	20 EA	8 lbs
<b>Standoff Shaft, 7"</b>	232-01055	\$4.27	20 EA	10 lbs
<b>Standoff Shaft, 8 1/2"</b>	232-01056	\$4.98	20 EA	12 lbs
<b>Standoff Shaft, 10"</b>	232-01057	\$5.70	20 EA	14 lbs
<b>1" Standoff Spacer w/ Connector Screw</b>	242-92081	\$1.66	20 EA	1.6 lbs
<b>Rubber Rain Collar</b>	232-01000	\$1.18	20 EA	0.7 lbs
<b>Standoff Clamp Assembly</b>	242-04100	\$2.85	20 EA	4.2 lbs
<b>Standoff Clamp and L Foot Assembly</b>	242-09002	\$5.93	20 EA	8 lbs



**1" STANDOFF SPACER  
W/ CONNECTOR SCREW  
242-92081**



**STANDOFF BASE, 1-HOLE  
242-00017**



**STANDOFF BASE, 4-HOLE  
232-02412**

# SnapNrack Roof Attachments

## HD STANDOFF KITS

Heavy Duty Standoff Kits available for extreme applications.

Description	Item Number	MSRP	Standard Package Qty	Standard Package Wt
<b>HD Standoff Kit, 7"</b>	242-92073	\$13.77	20 Kits	23 lbs
<b>HD Standoff Kit, 12"</b>	242-92074	\$16.62	20 Kits	31 lbs
<b>HD Standoff Kit, 18"</b>	242-92075	\$20.18	20 Kits	40 lbs



HD Standoff Kits include a 6-Hole HD Base, HD Standoff Shaft, Rubber Rain Collar, and a Standoff Clamp assembly.

## HD TILT KITS

Heavy Duty versions of Tilt Kits available for extreme applications.

Description	Item Number	MSRP	Standard Package Qty	Standard Package Wt
<b>20° HD Tilt Kit w/ 7" and 18" HD Standoffs</b>	242-92079	\$40.13	20 Kits	70 lbs
<b>10° - 45° Variable Tilt Hardware Kit</b>	242-92083	\$10.45	20 Kits	12 lbs



HD Tilt Kits include two standoff mounts each comprised of a 6-Hole HD Base, HD Standoff Shaft, Rubber Rain Collar, and a Standoff Clamp and L Foot Assembly.

The 10° - 45° Variable Tilt Hardware Kit can be combined with a pair of HD Standoff Kits and a short piece of Standard Rail to achieve a wide range of tilt angles.



Tilt angles are relative to the roof pitch and assume a 30" North-South attachment spacing.



**STANDOFF SHAFT, 5 1/2"**  
232-01054



**HD STANDOFF KIT, 12"**  
242-92074



**STANDOFF CLAMP ASSEMBLY**  
242-04100



**STANDOFF CLAMP AND L FOOT ASSEMBLY**  
242-09002



# SnapNrack Roof Attachments

## HD STANDOFF MOUNT ACCESSORIES

HD standoffs allow for a wide variety of mounting configurations.

Description	Item Number	MSRP	Standard Package Qty	Standard Package Wt
HD Standoff Base, 6-Hole	232-02413	\$5.46	20 EA	9 lbs
HD Standoff Shaft, 7"	232-01062	\$4.27	20 EA	10 lbs
HD Standoff Shaft, 12"	232-01063	\$7.12	20 EA	18 lbs
HD Standoff Shaft, 18"	232-01021	\$10.68	20 EA	26 lbs
Rubber Rain Collar	232-01000	\$1.18	20 EA	0.7 lbs
Standoff Clamp Assembly	242-04100	\$2.85	20 EA	4.2 lbs
Standoff Clamp and L Foot Assembly	242-09002	\$5.93	20 EA	8 lbs



**RUBBER RAIN COLLAR**  
232-01000



**HD STANDOFF BASE, 6-HOLE**  
232-02413

## STANDOFF FLASHINGS

Variety of flashings for weatherproofing needs.

Description	Item Number	MSRP	Standard Package Qty	Standard Package Wt
Standoff Flashing, Verde 1.0STF, Skinny Cone for Tile, 20" x 20" x 3", Dead Soft Alum	175-05001	\$16.25	25 EA	25 lbs
Standoff Flashing, Offset Cone for 1-Hole Base on Comp, 12" x 15" x 4", Galv (Box of 25)	175-05012	\$330.00	1 Box	27 lbs
Standoff Flashing, Offset Cone for 1-Hole Base on Flat Tile, 18 3/4" x 15" x 4", Galv	131-01216	\$13.00	20 EA	17 lbs
Standoff Flashing, Oatey 11830, No Caulk Rubber Cone, 9" x 12 1/2", Galv	015-00162	\$11.00	12 EA	8 lbs
Standoff Flashing, Verde 1.0SSO, Deck Level for 1-Hole Base, 10" x 12" x 1", Galv	175-05005	\$5.75	25 EA	17 lbs



**STANDOFF FLASHING, OATEY NO CAULK**  
015-00162



**STANDOFF FLASHING, 4" OFFSET CONE, 18 3/4" X 15"**  
131-01216

## LAG SCREWS

SnapNrack offers lag screw packs allowing one stop convenience for your entire racking system.

Description	Item Number	MSRP	Standard Package Qty	Standard Package Wt
Lag Screw and Washer, 5/16" x 3 1/2", SS (Pack of 100)	014-06508	\$124.25	1 Pack	7 lbs
Lag Screw and Washer, 5/16" x 5", SS (Pack of 100)	014-06509	\$198.00	1 Pack	9 lbs



# SnapNrack Rails

## STANDARD RAIL SETS

The SnapNrack rail is unique in that it is the only rail on the market with a channel designed for integrated wire management. Other systems require excess components that increase labor and pose a risk to quality.

Description	Item Number	MSRP	Standard Package Qty	Standard Package Wt
<b>Standard Rail Set, 122", Black</b> (Box of 2)	015-09816	\$169.10	1 Box	20 lbs
<b>Standard Rail Set, 122", Silver</b> (Box of 2)	015-09814	\$136.80	1 Box	20 lbs
<b>Standard Rail Set, 122", Black</b> (Box of 6)	015-09822	\$448.63	1 Box	51 lbs
<b>Standard Rail Set, 122", Silver</b> (Box of 6)	015-09813	\$350.55	1 Box	51 lbs
<b>Standard Rail, 122", Black</b> (Bundle of 112, priced as each)	232-01067	\$67.68	112 EA	900 lbs
<b>Standard Rail, 122", Silver</b> (Bundle of 112, priced as each)	232-01068	\$52.25	112 EA	900 lbs
<b>Standard Rail Set, 162", Black</b> (Box of 2)	015-09818	\$211.85	1 Box	29 lbs
<b>Standard Rail Set, 162", Silver</b> (Box of 2)	015-09817	\$176.70	1 Box	29 lbs
<b>Standard Rail Set, 162", Black</b> (Box of 6)	015-09826	\$569.52	1 Box	66 lbs
<b>Standard Rail Set, 162", Silver</b> (Box of 6)	015-09824	\$464.55	1 Box	66 lbs
<b>Standard Rail, 162", Black</b> (Bundle of 112, priced as each)	232-01069	\$85.97	112 EA	1,200 lbs
<b>Standard Rail, 162", Silver</b> (Bundle of 112, priced as each)	232-01070	\$69.58	112 EA	1,200 lbs
<b>Standard Rail, 122", Mill Finish</b> (Bundle of 112, priced as each)	232-02112	\$47.02	112 EA	900 lbs
<b>Standard Rail, 162", Mill Finish</b> (Bundle of 112, priced as each)	232-02113	\$61.75	112 EA	1,200 lbs



**STANDARD BLACK RAIL**  
015-09816



**STANDARD SILVER RAIL**  
015-09814

 Rails are anodized black or clear to achieve a lasting finish and the desired color.

 Appearance of mill finish products may vary and change over time.

# SnapNrack Rails

## STANDARD RAIL SPLICES

SplICES quickly connect and bond rails.

Description	Item Number	MSRP	Standard Package Qty	Standard Package Wt
<b>Bonding Standard Rail Splice, Black</b>	242-04015	\$10.92	20 EA	13 lbs
<b>Bonding Standard Rail Splice, Silver</b>	242-04014	\$10.21	20 EA	13 lbs



**BONDING STANDARD RAIL SPLICE, BLACK**  
242-04015

## STANDARD RAIL ACCESSORIES

End caps with flush cut rails provide a clean finish homeowners love.

Description	Item Number	MSRP	Standard Package Qty	Standard Package Wt
<b>Standard Rail End Cap</b>	232-01023	\$2.13	20 EA	0.8 lbs
<b>UEC Rail Cutting Tool</b>	232-02284	\$14.25	20 EA	12 lbs



**STANDARD RAIL END CAP**  
232-01023



**UEC RAIL CUTTING TOOL**  
232-02284

## CHANNEL NUTS

The SnapNrack channel nut is designed to work seamlessly with our rail, snapping in, without the need to fish through the length of the rail.

Description	Item Number	MSRP	Standard Package Qty	Standard Package Wt
<b>Bonding Channel Nut</b>	232-02009	\$1.42	20 EA	0.90 lbs
<b>Original Channel Nut</b>	232-02005	\$0.71	20 EA	0.90 lbs



**BONDING & ORIGINAL CHANNEL NUTS**  
232-02009  
232-02005

# SnapNrack Module Attachments

## MID CLAMPS

Mid Clamps allow easy module attachment to SnapNrack rails utilizing snap-in technology.

Description	Item Number	MSRP	Standard Package Qty	Standard Package Wt
<b>Bonding Mid Clamp, 1.18" - 1.48", Black</b>	242-02053	\$4.03	20 EA	3 lbs
<b>Bonding Mid Clamp, 1.18" - 1.48", Silver</b>	242-02050	\$3.56	20 EA	3 lbs
<b>Bonding Mid Clamp, 1.31" - 1.77", Black</b>	242-02054	\$4.03	20 EA	3.2 lbs
<b>Bonding Mid Clamp, 1.31" - 1.77", Silver</b>	242-02051	\$3.56	20 EA	3.2 lbs
<b>Bonding Mid Clamp, 1.50" - 2.00", Black</b>	242-02055	\$4.03	20 EA	3.3 lbs
<b>Bonding Mid Clamp, 1.50" - 2.00", Silver</b>	242-02052	\$3.56	20 EA	3.3 lbs
<b>Bonding Mid Clamp, 1.95" - 2.23", Black</b>	242-02057	\$4.03	20 EA	3.4 lbs
<b>Bonding Mid Clamp, 1.95" - 2.23", Silver</b>	242-02056	\$3.56	20 EA	3.4 lbs



**BONDING MID CLAMP,  
1.31" - 1.77", BLACK  
242-02054**

## UNIVERSAL END CLAMP

Universal End Clamps are unique one-size-fits-all time savers that slip inside the module frame - completely out of sight.

Description	Item Number	MSRP	Standard Package Qty	Standard Package Wt
<b>Universal End Clamp</b>	242-02215	\$5.46	20 EA	6 lbs



**UNIVERSAL END CLAMP  
242-02215**

## ADJUSTABLE END CLAMPS

Two Adjustable End Clamp sizes cover a wide range of module frames.

Description	Item Number	MSRP	Standard Package Qty	Standard Package Wt
<b>Bonding Adjustable End Clamp, 1.18" - 1.48", Black</b>	242-02067	\$7.12	20 EA	3.6 lbs
<b>Bonding Adjustable End Clamp, 1.18" - 1.48", Silver</b>	242-02065	\$6.41	20 EA	3.6 lbs
<b>Bonding Adjustable End Clamp, 1.49" - 2.00", Black</b>	242-02068	\$7.12	20 EA	3.6 lbs
<b>Bonding Adjustable End Clamp, 1.49" - 2.00", Silver</b>	242-02066	\$6.41	20 EA	3.6 lbs



**BONDING ADJUSTABLE END  
CLAMP, 1.49" - 2.00", BLACK  
242-02068**

# SnapNrack Accessories

## WIRE & CONDUIT MANAGEMENT

SnapNrack is committed to reducing labor and simplifying the overall solar installation, not just the racking system. We offer a variety of wire management and conduit products to complement our industry leading system.

Description	Item Number	MSRP	Standard Package Qty	Standard Package Wt
4-Wire Clamp for Rail	242-02102	\$3.56	20 EA	2.4 lbs
Trunk Cable Clamp for Rail	242-02103	\$3.56	20 EA	2.7 lbs
Snap-in Wire Retention Clip	232-01106	\$0.47	20 EA	0.02 lbs
48" Rail Cover, Silver	232-01033	\$7.12	20 EA	13 lbs
Ground Lug R, 6-12 AWG	242-02101	\$4.75	20 EA	5 lbs
Lay-in Lug w/ Bolt and Keps Lock Nut, 4-14 AWG (Pack of 10)	051-03418	\$45.00	1 Pack	0.72 lbs
Conduit Support for Tile, 3/4" EMT	242-02104	\$5.70	20 EA	1.5 lbs
Conduit Support Kit for Comp, 3/4" EMT	242-02106	\$10.45	20 Kits	22 lbs
Junction Box R	242-01104	\$28.50	1 EA	1.2 lbs



TRUNK CABLE CLAMP &  
4-WIRE CLAMP FOR RAIL  
242-02103  
242-02102



SNAP-IN WIRE RETENTION CLIP  
232-01106



GROUND LUG R FOR 6-12 AWG  
242-02101



Junction Box R  
242-01104



Conduit Support for Tile, 3/4" EMT  
242-02104



CONDUIT SUPPORT KIT FOR  
COMP, 3/4" EMT  
242-02106

# SnapNrack Accessories

## MODULE LEVEL POWER ELECTRONICS

MLPE Attachment Kit secures optimizers, microinverters, and RSD's to Standard and Ground Rail.



**MLPE RAIL ATTACHMENT KIT**  
242-92093

Description	Item Number	MSRP	Standard Package Qty	Standard Package Wt
<b>MLPE Rail Attachment Kit</b>	242-92093	\$2.85	20 Kits	3.2 lbs



MLPE Rail Attachment Kit includes over-sized Fender Washer, Channel Nut and serrated Flange Bolt.

## ARRAY SKIRT

The Array Skirt easily attaches to all modules from major manufacturers using a 1/2" socket and provides a clean finished look to your install.



**SKIRT SET, 162" (BOX OF 6)**  
015-11787

Description	Item Number	MSRP	Standard Package Qty	Standard Package Wt
<b>Skirt Set, 162" (Box of 6)</b>	015-11787	\$506.35	1 Box	61 lbs
<b>Skirt Frame Mount</b>	242-92211	\$4.75	20 EA	4.6 lbs
<b>Skirt Splice</b>	232-01251	\$2.37	20 EA	2.6 lbs
<b>Skirt End Cap Pair</b>	232-01250	\$2.13	20 EA	1.0 lbs
<b>Skirt, 162" (Bundle of 60, priced as each)</b>	232-01259	\$78.13	60 EA	550 lbs



**SKIRT FRAME MOUNT**  
242-92211



**SKIRT SPLICE**  
232-01251



**SKIRT END CAP PAIR**  
232-01250

# SnapNrack Accessories

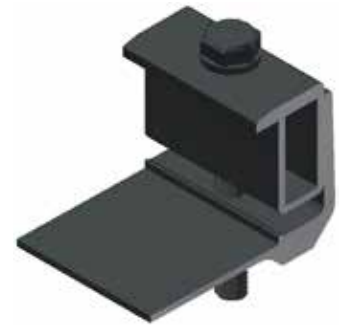
## ARRAY EDGE SCREEN

Critter guard easily attaches to edge of array to prevent debris and creatures from getting underneath.



**ARRAY EDGE SCREEN KIT,  
4" X 100', 40 CLIPS  
015-11176**

Description	Item Number	MSRP	Standard Package Qty	Standard Package Wt
<b>Array Edge Screen Kit, 4" x 100', 40 Clips</b>	015-11176	\$152.00	1 Kit	14 lbs
<b>Array Edge Screen Kit, 8" x 100', 40 Clips</b>	015-11177	\$242.25	1 Kit	27 lbs
<b>Array Edge Screen Clip, 4"</b>	232-03993	\$2.13	20 EA	2 lbs
<b>Array Edge Screen Clip, 8"</b>	232-03994	\$2.61	20 EA	4 lbs
<b>Add-A-Lip Box Frame Adapter, Black</b>	242-01101	\$6.41	20 EA	6 lbs



**ADD-A-LIP BOX FRAME ADAPTER,  
BLACK  
242-01101**



Array Edge Screen Kits include 100 ft. of Array Edge Screen and 40 Array Edge Screen Clips.



Add-A-Lip Box Frame Adapter is for use with module frames that do not have a bottom lip for attaching the Array Edge Screen Clip.

# SnapNrack Ground Mount

## GROUND RAIL

Series 200 Ground Rails are supported by standard galvanized pipes for straightforward installations of clean ground arrays.

Description	Item Number	MSRP	Standard Package Qty	Standard Package Wt
<b>Ground Rail Set, 122", Silver (Box of 4)</b>	015-09839	\$299.25	1 Box	38 lbs
<b>Ground Rail, 122", Silver (Bundle of 112, priced as each)</b>	232-02183	\$67.45	112 EA	1,252 lbs
<b>Ground Rail Set, 162", Silver (Box of 2)</b>	015-09819	\$191.90	1 Box	29 lbs
<b>Ground Rail Set, 162", Silver (Box of 4)</b>	015-09855	\$342.00	1 Box	49 lbs
<b>Ground Rail, 162", Silver (Bundle of 112, priced as each)</b>	232-01072	\$79.32	112 EA	1,790 lbs



**GROUND RAIL 162", SILVER  
232-01072**

# SnapNrack Ground Mount

## GROUND RAIL ACCESSORIES

Accessories enhance the aesthetics of the Series 200 Ground Mount System.

Description	Item Number	MSRP	Standard Package Qty	Standard Package Wt
<b>Ground Rail End Cap</b>	232-01043	\$2.61	20 EA	1.6 lbs



**GROUND RAIL END CAP  
232-01043**

## STRUCTURAL FITTINGS

Heavy duty fittings make up the structure of the Series 200 Ground Mount System.

Description	Item Number	MSRP	Standard Package Qty	Standard Package Wt
<b>Bonding Pipe Clamp for 1 1/2"</b>	242-09004	\$6.65	20 EA	9 lbs
<b>Single Socket Tee, Hollaender (5E-8), 1 1/2", AL-MG</b>	172-05800	\$12.50	1 EA	0.55 lbs
<b>Single Adjustable Socket Tee, Hollaender (17-8), 1 1/2", AL-MG</b>	172-05803	\$18.75	1 EA	1.1 lbs
<b>Double Adjustable Socket Tee, Hollaender (19E-8), 1 1/2", AL-MG</b>	172-05804	\$24.00	1 EA	0.85 lbs
<b>Rectangular Base Flange, Hollaender (46-8), 1 1/2", AL-MG</b>	172-05807	\$18.50	1 EA	0.55 lbs
<b>Plug End, Hollaender (62-8), 1 1/2" Sched 40, AL</b>	172-05808	\$5.00	1 EA	0.16 lbs
<b>Plug End, Hollaender (62P-8), 1 1/2" Sched 40, Plastic</b>	172-05811	\$4.00	1 EA	0.05 lbs



**BONDING PIPE CLAMP FOR 1 1/2"  
242-09004**



**SINGLE SOCKET TEE, HOLLAENDER  
172-05800**



## Place Your Order

---

Contact your SnapNrack distributor, which can be found at [www.SnapNrack.com/where-to-buy](http://www.SnapNrack.com/where-to-buy), contact us directly at [contact@SnapNrack.com](mailto:contact@SnapNrack.com) or call us Toll Free at (877) 732-2860.

In addition to SnapNrack's online support, the SnapNrack distributors all have trained knowledgeable staff that can provide product design and ordering assistance.

If you have questions that the distributor is unable to answer please contact us directly at [contact@SnapNrack.com](mailto:contact@SnapNrack.com) or call us Toll Free at (877) 732-2860.

## Warranty

---

All SnapNrack products are covered by a 20-year limited warranty. For complete details please visit [www.snapnrack.com/resources](http://www.snapnrack.com/resources).

## MSRP

---

Prices published in this document are for reference only and are Manufacturer Suggested Retail Prices. All prices are subject to change without prior notice. The MSRP listed is for each item per the description. The Standard Package Qty is how the items are typically packaged and serve as the preferred order multiple for each item.