

Residential Meter Breakers



Standard Design Non-EUSERC Panel

Compact Design

Non-EUSERC Combination Service Entrance Devices 100–200A Styles

Product Description

A device that may include a meter socket, main breaker and loadcenter section within the same enclosure.

- Meter main = meter socket and main breaker
- Meter breaker = meter socket, main breaker and loadcenter section

Application Description

Eaton’s line of non-EUSERC meter breakers are designed for customers served by utilities that are not members of EUSERC.

Contents

Description

Residential Meter Breakers	V1-T5-41
Non-EUSERC Combination Service Entrance Devices 100–200A Styles	
Meets EUSERC Requirements Service Entrance Devices 100–225A	V1-T5-52
West Coast All-In-One Design	V1-T5-63
Mechanical Interlock Cover	V1-T5-69
House Panels	V1-T5-79
Commercial Safety Sockets	V1-T5-87
CH Style Renovation Solutions	V1-T5-90
Aluminum Meter Breakers	V1-T5-91

Page

V1-T5-41
V1-T5-52
V1-T5-63
V1-T5-69
V1-T5-79
V1-T5-87
V1-T5-90
V1-T5-91

Features, Benefits and Functions

Meter Mains and All-in-Ones

- Single-phase, three-wire, 120/240 Vac, 10 kAIC
- Larger lay-in lugs and 3-inch (76.2 mm) knockouts for ease of installation
- Box-type main lugs included
- Factory-installed neutral
- Hub provisions on top endwall. If hubs are required, order “DS” style
- Ring, ringless and ringless with horn bypass styles available
- Ringless style, provided with embossed covers and security latch for utility company lock
- Padlockable device covers provide additional measure of safety and help prevent tampering
- NEMA 3R rainproof construction

Meter Mains

- Meter socket and main breaker
- Stainless steel latches on meter compartments in MBP types
- No distribution section included

All-in-Ones

- Meter socket and loadcenter distribution section
- Stainless steel latches on meter compartments
- Several designs with horn bypass and fifth jaw
- Center-fed main breaker, lugs or provision
- Uses Type BR 1-inch (25.4 mm) wide branch breakers
- Special channel for top exit

5.10 Metering Products

Meter Breakers

Catalog Number Selection

MB 20 40 B 200 BT S

Meter Breaker Type	
MB	= 1-inch BR Type
MBE	= 1-inch BR Type—EUSERC
CMB	= 3/4-Inch (19.1 mm) CH Type
CMBE	= 3/4-inch (19.1 mm) CH Type—EUSERC

Spacing
Number of spaces

Poles
Maximum number of poles

Main
B = Main breaker included
P = Provision for main
L = Main lug

Amperes
Amperage of unit

Accessories/Modifications
D = 5th jaw and horn bypass
CU = Copper
C = Single cover compact design
CR = Two cover compact design

Mounting
S = Surface
F = Flush/stucco

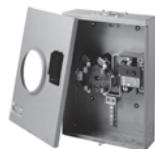
Breaker Feed
BT = Bottom and top
B = Bottom only
T = Top only

Product Selection

Note: See knockout drawings on **Pages V1-T5-72 through V1-T5-78** for hub information.

Standard Design
Non-EUSERC Panel

Compact Design



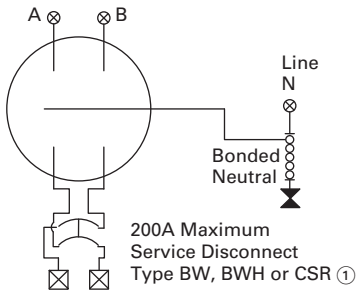
Combination Service Entrance Devices—Non-EUSERC

Ampere Rating	Bypass	Service	kAIC	Jaws	Distribution	Main	Branch Breaker Type	Dimensions and Enclosure Shape ①	Page Numbers		Catalog Number
									Wiring	Knockout ①	
Ring Style Meter Mains (no distribution section included)											
150	None	OH/UG	10	4	None	CSH2150	None	13	V1-T5-50	V1-T5-78	MBB150BTSCR
150	None	OH/UG	22	4	None	CSH2150	None	3	V1-T5-47	V1-T5-74	CMBB150BTS ⑥⑦
200	None	OH/UG	10	4	None	CSH2200	None	13	V1-T5-50	V1-T5-78	MBB200BTSCR
200	None	OH/UG	②	4	None	Provision ④⑤	None	3	V1-T5-47	V1-T5-74	CMBP200BTS ⑥⑦
200	None	OH/UG	22	4	None	CSH2200	None	3	—	V1-T5-74	CMBB200BTS ⑥⑦
Ringless Meter Mains (no distribution section included)											
150	None	OH/UG	10	4	None	CSH2150	None	13	V1-T5-50	V1-T5-78	MBB150BTSC ⑦
200	None	OH/UG	10	4	None	CSH2200	None	9	V1-T5-51	V1-T5-78	MBB200BTS ⑥
200	None	OH/UG	10	4	None	CSH2200	None	13	V1-T5-50	V1-T5-78	MBB200BTSC ⑦
150	None	OH/UG	10	4	None	CSH2125	None	9	V1-T5-51	V1-T5-78	MBB150BTS
200	None	OH/UG	②	4	None	Provision ③	None	9	V1-T5-51	V1-T5-78	MBP200BTS ⑦
200	Horn	OH/UG	②	5	None	Provision ③④	None	11	V1-T5-49	V1-T5-78	MBP200SD
200	Horn	OH/UG	②	5	None	Provision ③④	None	9	V1-T5-51	V1-T5-78	MBP200BTSD
100	Horn	OH/UG	10	5	None	Provision	None	15	—	V1-T5-78	CHMMB100BTS
150	Horn	OH/UG	10	5	None	BWH2150	None	16	—	V1-T5-78	CHMMB150BTS
200	Horn	OH/UG	10	5	None	BWH2200	None	16	—	V1-T5-78	CHMMB200BTS
150	None	OH/UG	10	4	4/8	BWH	BR	—	—	—	MB48B150TSG
200	None	OH/UG	10	4	4/8	BWH	BR	—	—	—	MB48B200BTSG
200	Lever	OH/UG	22	4	8/16	BWH	BR	—	—	—	MBX816B200BTS
200	Lever	OH/UG	22	4	20/40	BWH	BR	—	—	—	MBX2040B200BTS

Notes

- ① See **Page V1-T5-72** for box details.
- ② Per installed main breaker rating.
- ③ When a provision for main is provided, order one of the main breakers listed in **Page V1-T5-47**. Panels are dual labeled to accept Types BW, BWH, CSR or CSH Main Breakers.
- ④ MCBK225 lug kit is needed for load side cable connection for Meter Mains. Please order separately.
- ⑤ When a provision for main is provided, order one of the main breakers listed in this table. Panels are labeled to accept Type CSR Main Breakers.
- ⑥ Copper bus.
- ⑦ One-piece cover on utility side, Florida approved.
- ⑧ Single cover design.
- ⑨ Xcel approved.

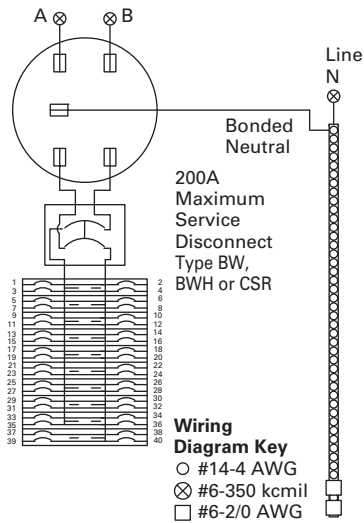
Catalog Numbers—MBB150BTS, MBP200SD, MBB200BTS, MBP200BTS, MBP200BTSD, CMBXB200BTS and CMBXP200BTS



Wiring Diagram Key

- #6-2/0 AWG
- ⊗ #6-350 kcmil
- ⊠ #1-300 kcmil
- ⚡ #6-300 kcmil

Catalog Numbers—MB2040P200SD, MB2040B200BTS, MB2040P200BTS, MB2040B150SD and MB2040B200SD



Wiring Diagram Key

- #14-4 AWG
- ⊗ #6-350 kcmil
- ⊠ #6-2/0 AWG