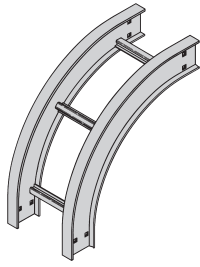


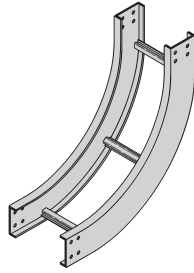
Series 2, 3, 4, & 5 - Fittings

Vertical Bend 90° (VO, VI)

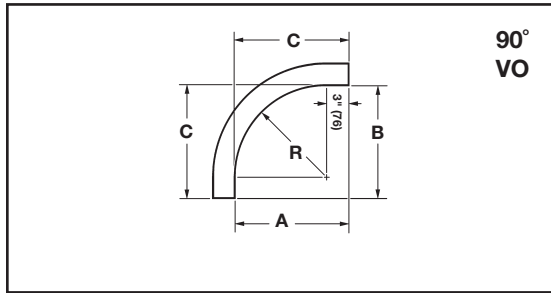
1 pair splice plates with hardware included.



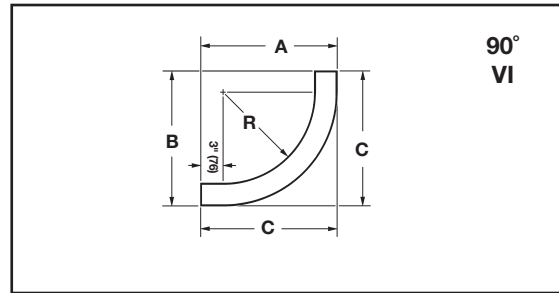
90° Vertical Outside



90° Vertical Inside



90°
VO



90°
VI

Bend Radius R	Tray Width Insert		(*) Insert "VO" for Vert. Outside Bend "VI" for Vert. Inside Bend Catalog No.	VO Side Rail Height 4" - 7"			VI Side Rail Height											
				A	B	C	4"			5"			6"			7"		
				in.	in.	in.	in.	in.	in.	in.	in.	in.	in.	in.	in.	in.	in.	in.
12 (305)	6	152	(Prefix)-06-90(*)12 (Prefix)-09-90(*)12 (Prefix)-12-90(*)12 (Prefix)-18-90(*)12 (Prefix)-24-90(*)12 (Prefix)-30-90(*)12 (Prefix)-36-90(*)12 (Prefix)-42-90(*)12															
	9	228		15	15	15	19	19	19	20	20	20	21	21	21	22	22	22
	12	305		(381)	(381)	(381)	(483)	(483)	(483)	(508)	(508)	(508)	(533)	(533)	(533)	(559)	(559)	(559)
	18	457																
	24	609																
	42	1067																
24 (609)	6	152	(Prefix)-06-90(*)24 (Prefix)-09-90(*)24 (Prefix)-12-90(*)24 (Prefix)-18-90(*)24 (Prefix)-24-90(*)24 (Prefix)-30-90(*)24 (Prefix)-36-90(*)24 (Prefix)-42-90(*)24															
	9	228		27	27	27	31	31	31	32	32	32	33	33	33	34	34	34
	12	305		(686)	(686)	(686)	(787)	(787)	(787)	(813)	(813)	(813)	(838)	(838)	(838)	(864)	(864)	(864)
	18	457																
	24	609																
	42	1067																
36 (914)	6	152	(Prefix)-06-90(*)36 (Prefix)-09-90(*)36 (Prefix)-12-90(*)36 (Prefix)-18-90(*)36 (Prefix)-24-90(*)36 (Prefix)-30-90(*)36 (Prefix)-36-90(*)36 (Prefix)-42-90(*)36															
	9	228		39	39	39	43	43	43	44	44	44	45	45	45	46	46	46
	12	305		(991)	(991)	(991)	(1092)	(1092)	(1092)	(1118)	(1118)	(1118)	(1143)	(1143)	(1143)	(1168)	(1168)	(1168)
	18	457																
	24	609																
	42	1067																
48 (1219)	6	152	(Prefix)-06-90(*)48 (Prefix)-09-90(*)48 (Prefix)-12-90(*)48 (Prefix)-18-90(*)48 (Prefix)-24-90(*)48 (Prefix)-30-90(*)48 (Prefix)-36-90(*)48 (Prefix)-42-90(*)48															
	9	228		51	51	51	55	55	55	56	56	56	57	57	57	58	58	58
	12	305		(1295)	(1295)	(1295)	(1397)	(1397)	(1397)	(1422)	(1422)	(1422)	(1448)	(1448)	(1448)	(1473)	(1473)	(1473)
	18	457																
	24	609																
	42	1067																

(Prefix) See page 288 for catalog number prefix.

All dimensions in parentheses are millimeters unless otherwise specified.

Manufacturing tolerances apply to all dimensions.