

TYPE CSWS

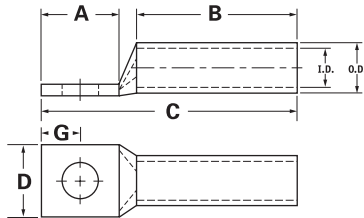
Features

- Manufactured from high strength seamless copper tubing
- Electro-Tin plated
- Chamfered entry
- Color coded
- Suitable for use in circuits rated 35KV or less, proper high voltage spacing and insulation techniques must be used
- UL Listed and CSA Certified with ILSCO and major competitor's compression tools
- UL467 Listed 500 kcmil - 8 AWG , #8 - #2 SOL
- Rated to 90° C

Benefits

- Offers maximum conductivity and excellent crimping characteristics
- Provides low contact resistance
- For easy conductor insertion
- Identifies the proper compression die
- Application versatility
- Reduces inventory requirements
- For grounding and bonding applications

A



Catalog Number	Wire Size	Alt Wire Size	Expanded* Wire Range	Bolt Size	Stud Hole Dia.	Dimensions					Die Color Code	Die Index	O.D.	I.D.
						A	B	C	D	G				
CSWS-8-10	#8 AWG	#8 FLEX, #8 SOL	-	10	0.219	0.562	0.500	1.257	0.374	0.258	Red	I-21	0.272	0.179
CSWS-8-14	#8 AWG	#8 FLEX, #8 SOL	-	1/4	0.281	0.680	0.500	1.375	0.486	0.320	Red	I-21	0.272	0.179
CSWS-8-516	#8 AWG	#8 FLEX, #8 SOL	-	5/16	0.343	0.875	0.500	1.570	0.532	0.352	Red	I-21	0.272	0.179
CSWS-8-38	#8 AWG	#8 FLEX, #8 SOL	-	3/8	0.406	0.875	0.500	1.570	0.593	0.414	Red	I-21	0.272	0.179
CSWS-6-10	#6 AWG	#6 FLEX, #6 SOL	-	10	0.219	0.562	0.500	1.257	0.440	0.258	Blue	I-24	0.320	0.225
CSWS-6-14	#6 AWG	#6 FLEX, #6 SOL	-	1/4	0.281	0.680	0.500	1.375	0.440	0.320	Blue	I-24	0.320	0.225
CSWS-6-516	#6 AWG	#6 FLEX, #6 SOL	-	5/16	0.343	0.875	0.500	1.570	0.530	0.352	Blue	I-24	0.320	0.225
CSWS-6-38	#6 AWG	#6 FLEX, #6 SOL	-	3/8	0.406	0.875	0.500	1.570	0.598	0.414	Blue	I-24	0.320	0.225
CSWS-6-12	#6 AWG	#6 FLEX, #6 SOL	-	1/2	0.562	1.250	0.500	1.945	0.755	0.546	Blue	I-24	0.320	0.225
CSWS-4-10	#4 AWG	#4 SOL	4-6 AWG	10	0.219	0.562	0.500	1.296	0.486	0.258	Gray	I-29	0.343	0.250
CSWS-4-14	#4 AWG	#4 SOL	4-6 AWG	1/4	0.281	0.680	0.500	1.414	0.486	0.320	Gray	I-29	0.343	0.250
CSWS-4-516	#4 AWG	#4 SOL	4-6 AWG	5/16	0.343	0.875	0.500	1.609	0.486	0.352	Gray	I-29	0.343	0.250
CSWS-4-38	#4 AWG	#4 SOL	4-6 AWG	3/8	0.406	0.875	0.500	1.609	0.593	0.414	Gray	I-29	0.343	0.250
CSWS-4-12	#4 AWG	#4 SOL	4-6 AWG	1/2	0.562	1.250	0.500	1.984	0.750	0.546	Gray	I-29	0.343	0.250
CSWS-3-10	#3 AWG	#4 FLEX	3-6 AWG	10	0.219	0.562	0.625	1.442	0.532	0.258	White	I-29	0.375	0.275
CSWS-3-14	#3 AWG	#4 FLEX	3-6 AWG	1/4	0.281	0.680	0.625	1.560	0.532	0.320	White	I-29	0.375	0.275
CSWS-3-516	#3 AWG	#4 FLEX	3-6 AWG	5/16	0.343	0.875	0.625	1.755	0.532	0.352	White	I-29	0.375	0.275
CSWS-3-38	#3 AWG	#4 FLEX	3-6 AWG	3/8	0.406	0.875	0.625	1.755	0.593	0.414	White	I-29	0.375	0.275
CSWS-3-12	#3 AWG	#4 FLEX	3-6 AWG	1/2	0.562	1.250	0.625	2.130	0.750	0.546	White	I-29	0.375	0.275
CSWS-2-10	#2 AWG	#2 SOL	2-6 AWG	10	0.219	0.562	0.625	1.473	0.599	0.258	Brown	I-33	0.421	0.312
CSWS-2-14	#2 AWG	#2 SOL	2-6 AWG	1/4	0.281	0.680	0.625	1.591	0.599	0.320	Brown	I-33	0.421	0.312
CSWS-2-516	#2 AWG	#2 SOL	2-6 AWG	5/16	0.343	0.875	0.625	1.786	0.599	0.352	Brown	I-33	0.421	0.312
CSWS-2-38	#2 AWG	#2 SOL	2-6 AWG	3/8	0.406	0.875	0.625	1.786	0.599	0.414	Brown	I-33	0.421	0.312
CSWS-2-12	#2 AWG	#2 SOL	2-6 AWG	1/2	0.562	1.250	0.625	2.161	0.750	0.546	Brown	I-33	0.421	0.312
CSWS-1-10	#1 AWG	#2 FLEX	1-6 AWG	10	0.219	0.562	0.625	1.517	0.673	0.258	Green	I-37	0.468	0.359
CSWS-1-14	#1 AWG	#2 FLEX	1-6 AWG	1/4	0.281	0.875	0.625	1.830	0.673	0.320	Green	I-37	0.468	0.359
CSWS-1-516	#1 AWG	#2 FLEX	1-6 AWG	5/16	0.343	0.875	0.625	1.830	0.673	0.352	Green	I-37	0.468	0.359
CSWS-1-38	#1 AWG	#2 FLEX	1-6 AWG	3/8	0.406	0.875	0.625	1.830	0.673	0.414	Green	I-37	0.468	0.359
CSWS-1-12	#1 AWG	#2 FLEX	1-6 AWG	1/2	0.562	1.250	0.625	2.205	0.750	0.546	Green	I-37	0.468	0.359
CSWS-1/0-10	1/0 AWG	#1 FLEX	1/0-6 AWG	10	0.219	0.562	0.750	1.668	0.738	0.258	Pink	I-42	0.515	0.390
CSWS-1/0-14	1/0 AWG	#1 FLEX	1/0-6 AWG	1/4	0.281	0.875	0.750	1.981	0.738	0.320	Pink	I-42	0.515	0.390
CSWS-1/0-516	1/0 AWG	#1 FLEX	1/0-6 AWG	5/16	0.343	0.875	0.750	1.981	0.738	0.352	Pink	I-42	0.515	0.390
CSWS-1/0-38	1/0 AWG	#1 FLEX	1/0-6 AWG	3/8	0.406	0.875	0.750	1.981	0.738	0.414	Pink	I-42	0.515	0.390
CSWS-1/0-12	1/0 AWG	#1 FLEX	1/0-6 AWG	1/2	0.562	1.250	0.750	2.356	0.738	0.546	Pink	I-42	0.515	0.390

All wire sizes, unless noted otherwise, are American Wire Gauge (AWG)

* When installed with specified dieless tools

See pages 98 to 103 for complete tooling information.

For Bent Tangs change the 4th letter to a B and add "-4" for 45 deg. or "-9" for 90 deg.

UL File E6207

A

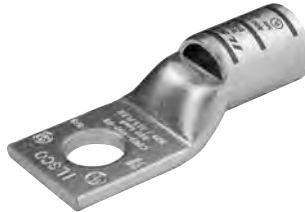
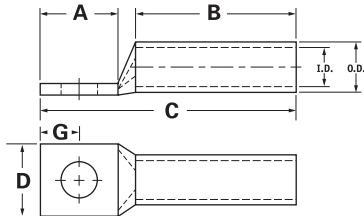
TYPE CSWS

Features

- Manufactured from high strength seamless copper tubing
- Electro-Tin plated
- Chamfered entry
- Color coded
- Suitable for use in circuits rated 35KV or less, proper high voltage spacing and insulation techniques must be used
- UL Listed and CSA Certified with ILSCO and major competitor's compression tools
- UL467 Listed 500 kcmil - 8 AWG , #8 - #2 SOL
- Rated to 90° C

Benefits

- Offers maximum conductivity and excellent crimping characteristics
- Provides low contact resistance
- For easy conductor insertion
- Identifies the proper compression die
- Application versatility
- Reduces inventory requirements
- For grounding and bonding applications



Catalog Number	Wire Size	Alt Wire Size	Expanded* Wire Range	Bolt Size	Stud Hole Dia.	Dimensions					Die Color Code	Die Index	O.D.	I.D.
						A	B	C	D	G				
CSWS-2/0-10	2/0 AWG	1/0 FLEX	2/0-4 AWG	10	0.219	0.562	0.750	1.708	0.811	0.258	Black	I-45	0.562	0.437
CSWS-2/0-14	2/0 AWG	1/0 FLEX	2/0-4 AWG	1/4	0.281	0.875	0.750	2.021	0.811	0.320	Black	I-45	0.562	0.437
CSWS-2/0-516	2/0 AWG	1/0 FLEX	2/0-4 AWG	5/16	0.343	0.875	0.750	2.021	0.811	0.352	Black	I-45	0.562	0.437
CSWS-2/0-38	2/0 AWG	1/0 FLEX	2/0-4 AWG	3/8	0.406	0.875	0.750	2.021	0.811	0.414	Black	I-45	0.562	0.437
CSWS-2/0-12	2/0 AWG	1/0 FLEX	2/0-4 AWG	1/2	0.562	1.250	0.750	2.396	0.811	0.546	Black	I-45	0.562	0.437
CSWS-3/0-10	3/0 AWG	2/0 FLEX	3/0-2 AWG	10	0.219	0.562	0.750	1.751	0.885	0.258	Orange	I-50	0.609	0.484
CSWS-3/0-14	3/0 AWG	2/0 FLEX	3/0-2 AWG	1/4	0.281	0.875	0.750	2.064	0.885	0.320	Orange	I-50	0.609	0.484
CSWS-3/0-516	3/0 AWG	2/0 FLEX	3/0-2 AWG	5/16	0.343	0.875	0.750	2.064	0.885	0.352	Orange	I-50	0.609	0.484
CSWS-3/0-38	3/0 AWG	2/0 FLEX	3/0-2 AWG	3/8	0.406	0.875	0.750	2.064	0.885	0.414	Orange	I-50	0.609	0.484
CSWS-3/0-12	3/0 AWG	2/0 FLEX	3/0-2 AWG	1/2	0.562	1.250	0.750	2.439	0.885	0.546	Orange	I-50	0.609	0.484
CSWS-4/0-14	4/0 AWG	3/0 FLEX	4/0-1 AWG	1/4	0.281	0.875	0.875	2.241	0.999	0.320	Purple	I-54	0.687	0.546
CSWS-4/0-516	4/0 AWG	3/0 FLEX	4/0-1 AWG	5/16	0.343	0.875	0.875	2.241	0.999	0.352	Purple	I-54	0.687	0.546
CSWS-4/0-38	4/0 AWG	3/0 FLEX	4/0-1 AWG	3/8	0.406	0.875	0.875	2.241	0.999	0.414	Purple	I-54	0.687	0.546
CSWS-4/0-12	4/0 AWG	3/0 FLEX	4/0-1 AWG	1/2	0.562	1.250	0.875	2.616	0.999	0.546	Purple	I-54	0.687	0.546
CSWS-250-516	250kcmil	4/0 FLEX	250kcmil - 1/0 AWG	5/16	0.343	0.875	1.063	2.469	1.088	0.352	Yellow	I-62	0.750	0.593
CSWS-250-38	250kcmil	4/0 FLEX	250kcmil - 1/0 AWG	3/8	0.406	0.875	1.063	2.469	1.088	0.414	Yellow	I-62	0.750	0.593
CSWS-250-12	250kcmil	4/0 FLEX	250kcmil - 1/0 AWG	1/2	0.562	1.250	1.063	2.844	1.088	0.546	Yellow	I-62	0.750	0.593
CSWS-300-516	300kcmil	250 G,H FLEX	300kcmil - 2/0 AWG	5/16	0.343	0.875	1.063	2.525	1.189	0.352	White	I-66	0.812	0.660
CSWS-300-38	300kcmil	250 G,H FLEX	300kcmil - 2/0 AWG	3/8	0.406	0.875	1.063	2.525	1.189	0.414	White	I-66	0.812	0.660
CSWS-300-12	300kcmil	250 G,H FLEX	300kcmil - 2/0 AWG	1/2	0.562	1.250	1.063	2.900	1.189	0.546	White	I-66	0.812	0.660
CSWS-300-58	300kcmil	250 G,H FLEX	300kcmil - 2/0 AWG	5/8	0.656	1.437	1.063	3.087	1.189	0.671	White	I-66	0.812	0.660
CSWS-350-38	350kcmil	250 I,K,M FLEX 262.2 DLO	350kcmil - 3/0 AWG	3/8	0.406	0.875	1.063	2.561	1.291	0.414	Red	I-71	0.890	0.703
CSWS-350-12	350kcmil	250 I,K,M FLEX 262.2 DLO	350kcmil - 3/0 AWG	1/2	0.562	1.250	1.063	2.936	1.291	0.546	Red	I-71	0.890	0.703
CSWS-350-58	350kcmil	250 I,K,M FLEX 262.2 DLO	350kcmil - 3/0 AWG	5/8	0.656	1.437	1.063	3.123	1.291	0.671	Red	I-71	0.890	0.703
CSWS-400-38	400kcmil	300 G,H,I,K,M FLEX 313.1 DLO	400kcmil - 4/0 AWG	3/8	0.406	0.875	1.188	2.730	1.365	0.414	Blue	I-76	0.937	0.750
CSWS-400-12	400kcmil	300 G,H,I,K,M FLEX 313.1 DLO	400kcmil - 4/0 AWG	1/2	0.562	1.250	1.188	3.105	1.365	0.546	Blue	I-76	0.937	0.750
CSWS-400-58	400kcmil	300 G,H,I,K,M FLEX 313.1 DLO	400kcmil - 4/0 AWG	5/8	0.656	1.437	1.188	3.292	1.365	0.671	Blue	I-76	0.937	0.750

All wire sizes, unless noted otherwise, are American Wire Gauge (AWG)

* When installed with specified dieless tools

See pages 98 to 103 for complete tooling information.

For Bent Tangs change the 4th letter to a B and add "-4" for 45 deg. or "-9" for 90 deg.

UL File E6207

TYPE CSWS

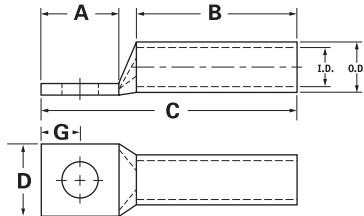
Features

- Manufactured from high strength seamless copper tubing
- Electro-Tin plated
- Chamfered entry
- Color coded
- Suitable for use in circuits rated 35KV or less, proper high voltage spacing and insulation techniques must be used
- UL Listed and CSA Certified with ILSCO and major competitor's compression tools
- UL467 Listed 500 kcmil - 8 AWG , #8 - #2 SOL
- Rated to 90° C

Benefits

- Offers maximum conductivity and excellent crimping characteristics
- Provides low contact resistance
- For easy conductor insertion
- Identifies the proper compression die
- Application versatility
- Reduces inventory requirements

A



Catalog Number	Wire Size	Alt Wire Size	Expanded* Wire Range	Bolt Size	Stud Hole Dia.	Dimensions					Die Color Code	Die Index	O.D.	I.D.
						A	B	C	D	G				
CSWS-500-38	500kcmil	350 G,H,I,K,M FLEX 373.7 DLO	500kcmil - 250kcmil	3/8	0.406	0.875	1.300	2.907	1.535	0.546	Brown	I-87	1.062	0.828
CSWS-500-12	500kcmil	350 G,H,I,K,M FLEX 373.7 DLO	500kcmil - 250kcmil	1/2	0.562	1.250	1.300	3.282	1.535	0.414	Brown	I-87	1.062	0.828
CSWS-500-58	500kcmil	350 G,H,I,K,M FLEX 373.7 DLO	500kcmil - 250kcmil	5/8	0.656	1.437	1.300	3.469	1.535	0.671	Brown	I-87	1.062	0.828
CSWS-600-38	600kcmil	400 G,H,I,K,M FLEX 444.4 DLO	600kcmil - 250kcmil	3/8	0.406	0.875	1.375	3.059	1.712	0.414	Green	I-94	1.187	0.920
CSWS-600-12	600kcmil	400 G,H,I,K,M FLEX 444.4 DLO	600kcmil - 250kcmil	1/2	0.562	1.250	1.375	3.434	1.712	0.546	Green	I-94	1.187	0.920
CSWS-600-58	600kcmil	400 G,H,I,K,M FLEX 444.4 DLO	600kcmil - 250kcmil	5/8	0.656	1.437	1.375	3.621	1.712	0.671	Green	I-94	1.187	0.920
CSWS-650-516	650kcmil	500 G,H,I,K,M FLEX 535.3 DLO	650kcmil - 350kcmil	5/16	0.343	0.875	1.375	3.119	1.764	0.352	Pink	I-99	1.217	0.958
CSWS-650-38	650kcmil	500 G,H,I,K,M FLEX 535.3 DLO	650kcmil - 350kcmil	3/8	0.406	0.875	1.375	3.119	1.764	0.414	Pink	I-99	1.217	0.958
CSWS-650-12	650kcmil	500 G,H,I,K,M FLEX 535.3 DLO	650kcmil - 350kcmil	1/2	0.562	1.25	1.375	3.494	1.764	0.546	Pink	I-99	1.217	0.958
CSWS-650-58	650kcmil	500 G,H,I,K,M FLEX 535.3 DLO	650kcmil - 350kcmil	5/8	0.656	1.437	1.375	3.681	1.764	0.671	Pink	I-99	1.217	0.958
CSWS-700-38	700kcmil	500 G,H,I,K,M FLEX 535.3 DLO	700kcmil - 350kcmil	3/8	0.406	0.875	1.375	3.119	1.816	0.414	Pink	I-99	1.250	0.991
CSWS-700-12	700kcmil	500 G,H,I,K,M FLEX 535.3 DLO	700kcmil - 350kcmil	1/2	0.562	1.250	1.375	3.494	1.816	0.546	Pink	I-99	1.250	0.991
CSWS-700-58	700kcmil	500 G,H,I,K,M FLEX 535.3 DLO	700kcmil - 350kcmil	5/8	0.656	1.437	1.375	3.681	1.816	0.671	Pink	I-99	1.250	0.991
CSWS-750-38	750kcmil	600 G,H,I,K,M FLEX 646.4 DLO	750 kcmil - 500kcmil	3/8	0.406	0.875	1.500	3.277	1.901	0.414	Black	I-106	1.313	1.031
CSWS-750-12	750kcmil	600 G,H,I,K,M FLEX 646.4 DLO	750kcmil - 500kcmil	1/2	0.562	1.250	1.500	3.652	1.901	0.546	Black	I-106	1.313	1.031
CSWS-750-58	750kcmil	600 G,H,I,K,M FLEX 646.4 DLO	750kcmil - 500kcmil	5/8	0.656	1.437	1.500	3.839	1.901	0.671	Black	I-106	1.313	1.031
CSWS-1000-38	1000kcmil	750 G,H,I FLEX 777.7 DLO	1000kcmil - 750kcmil	3/8	0.406	0.875	1.625	3.525	2.169	0.414	White	I-125	1.500	1.172
CSWS-1000-12	1000kcmil	750 G,H,I FLEX 777.7 DLO	1000kcmil - 750kcmil	1/2	0.562	1.250	1.625	3.900	2.169	0.546	White	I-125	1.500	1.172
CSWS-1000-58	1000kcmil	750 G,H,I FLEX 777.7 DLO	1000kcmil - 750kcmil	5/8	0.656	1.437	1.625	4.087	2.169	0.671	White	I-125	1.500	1.172

All wire sizes, unless noted otherwise, are American Wire Gauge (AWG)

* When installed with specified dieless tools

See pages 98 to 103 for complete tooling information.

For Bent Tangs change the 4th letter to a B and add "-4" for 45 deg. or "-9" for 90 deg.

UL File E6207