



AKRON ELECTRIC, INC.

Manufacturers of Explosion-Proof Enclosures & Electrical Systems

NEW
IN STOCK



FILE NO. E139669
FILE NO. E181300
FILE NO. E203605



LR86146



XP PUSHBUTTON OPERATORS (MOMENTARY)

EXPLOSION-PROOF/DUST TIGHT

CLASS I, GROUPS B, C & D;
CLASS II, GROUPS E, F & G;
CLASS III;
NEMA TYPE 4, 4X, 7 & 9

UL 698 Industrial Control Equipment for Use in Hazardous (Classified) Locations.

UL 1203 Explosion-Proof and Dust-Ignition-Proof Electrical Equipment for Use in Hazardous (Classified) Locations.

CSA C22.2 No. 30-M1986 Explosion-Proof Enclosures for Use in Class I Hazardous Locations.

FEATURES

- Operator bodies are black anodized & teflon-impregnated.
- Operating shafts are stainless steel.
- 3/4-14 NPSM threaded body size.
- Explosion-proof operators are suitable for panel or surface mount applications.
- Long Series:** Accommodates up to 2 1/2" thick enclosure wall thickness.
- Short Series:** Accommodates up to 1" thick enclosure wall thickness.
- Momentary pushbuttons are available in flush and extended versions.
- Momentary pushbuttons are molded thermoplastic protected by a machined aluminum guard.
- Mushroom Pushbuttons are 1 1/2" dia. aluminum.
- See Contact Block Information sheet for mounting and rating information.
- Standard Pushbutton, Mushroom Pushbutton- 2 1/2" centers, Jumbo Mushroom-min. 2 5/8" centers.

ORDERING INFORMATION

				CATALOG NUMBER		
Contact Block	Button Color	Standard Flush	Standard Extended	Standard Mushroom	Jumbo Mushroom (Red)	Jumbo Mushroom E-Stop (Red)
No Contact	Green	XPBSFG	XPBSEG	XPMHSG	XPJMSR	XPJMSR (e-stop)
	Black	XPBSFB	XPBSEB			
	Red	XPBSFR	XPBSER	XPMHSR		
1 NO (A)	Green	XPBSFGA	XPBSEGA	XPMHSGA		
	Black	XPBSFBA	XPBSEBA			
	Red	XPBSFRA	XPBSERA	XPMHSRA	XPJMSRA	XPJMSRA (e-stop)
1 NC (B)	Green	XPBSFGB	XPBSEGB	XPMHSGB		
	Black	XPBSFBB	XPBSEBB			
	Red	XPBSFRB	XPBSERB	XPMHSRB	XPJMSRB	XPJMSRB (e-stop)
1 NO/1 NC (C)	Green	XPBSFGC	XPBSEGC	XPMHSGC		
	Black	XPBSFBC	XPBSEBC			
	Red	XPBSFRC	XPBSERC	XPMHSRC	XPJMSRC	XPJMSRC (e-stop)
2 NO/2 NC (P)	Green	XPBSFGP	XPBSEGP	XPMHSGP		
	Black	XPBSFBP	XPBSEBP			
	Red	XPBSFRP	XPBSERP	XPMHSRP	XPJMSRP	XPJMSRP (e-stop)
2 NO/ 2 NC (2C)(2BLKS)	Green	XPBSFG2C	XPBSEG2C	XPMHSG2C		
	Black	XPBSFB2C	XPBSEB2C			
	Red	XPBSFR2C	XPBSER2C	XPMHSR2C	XPJMSR2C	XPJMSR2C (e-stop)

Note: For long barrel operators, substitute "L" for "S".
Example: XPBSFG to XPB_LFG

www.akronelectric.com

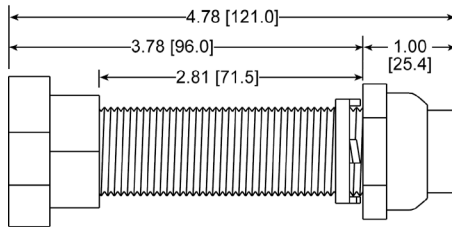
04/16/03

1025 Eagon St. Barberton, Ohio 44203 Ph:(330) 745-8891 Fax:(330) 745-2504 Toll Free:(800) 275-2535
e-mail: sales@akronelectric.com

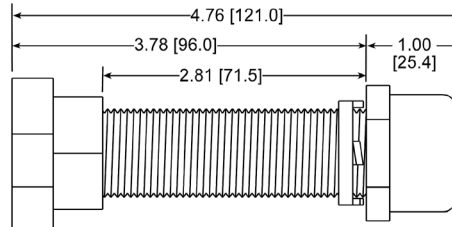


XP PUSHBUTTON OPERATORS DIMENSIONAL DATA

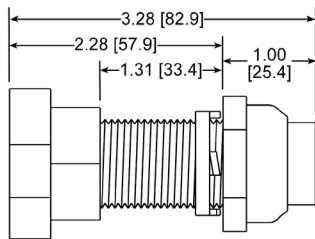
Long Barrel (extended)



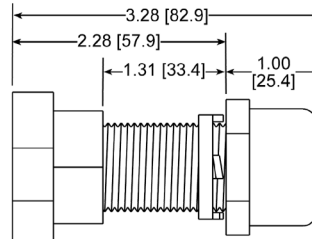
Long Barrel (flush)



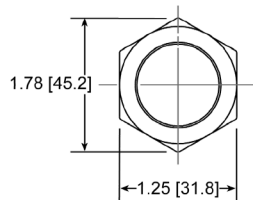
Short Barrel (extended)



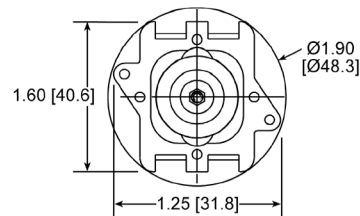
Short Barrel (flush)



Guard



Base



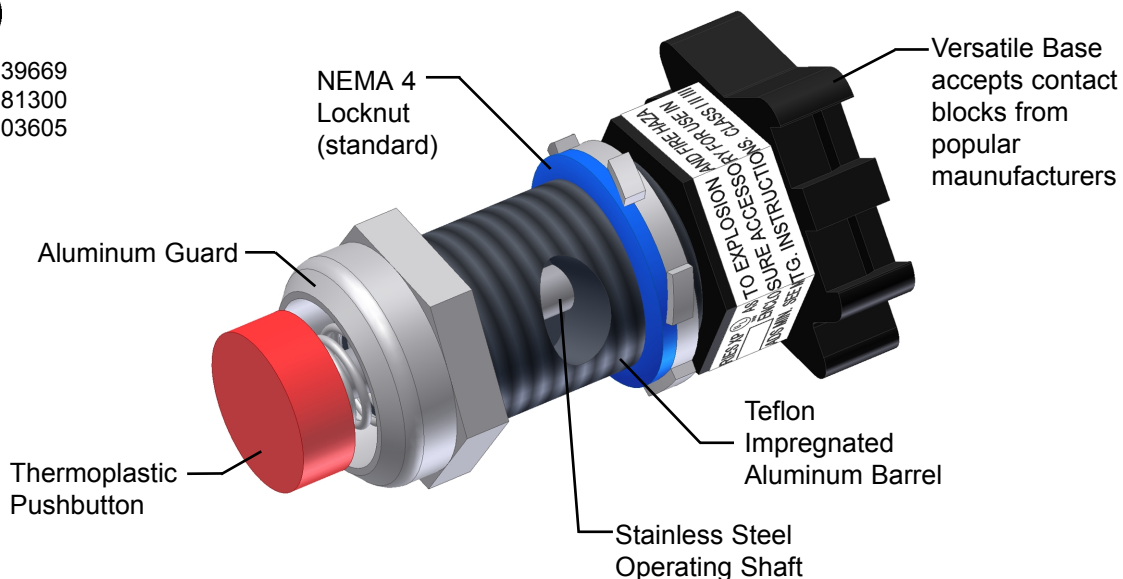
CONSTRUCTION DATA



FILE NO. E139669
FILE NO. E181300
FILE NO. E203605



LR86146



www.akronelectric.com

09/30/02

1025 Eagon St. Barberton, Ohio 44203 Ph:(330) 745-8891 Fax:(330) 745-2504 Toll Free:(800) 275-2535
e-mail: sales@akronelectric.com