

*New from a company that has always
been known to think outside the box:*

Lew Electric
Thinking The Box...Outside



**Introducing the floor box that
changes everything: OB-1**

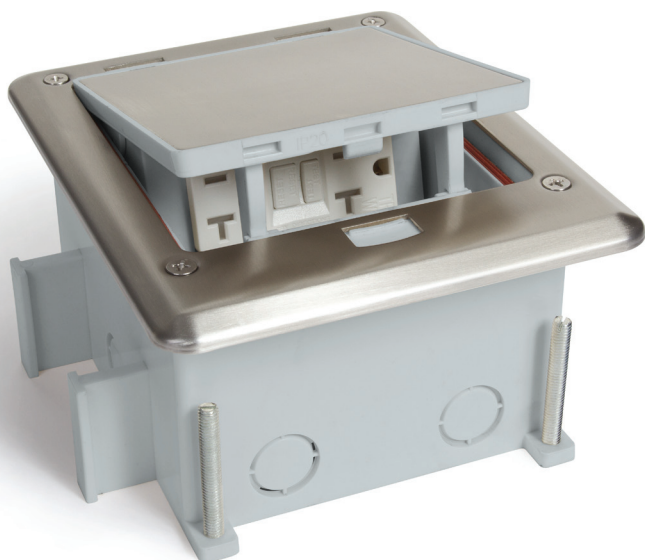
*A power solution for wet locations such as outdoor
living areas, patios, and swimming pools. Ideal for
a wide range of commercial applications too.*



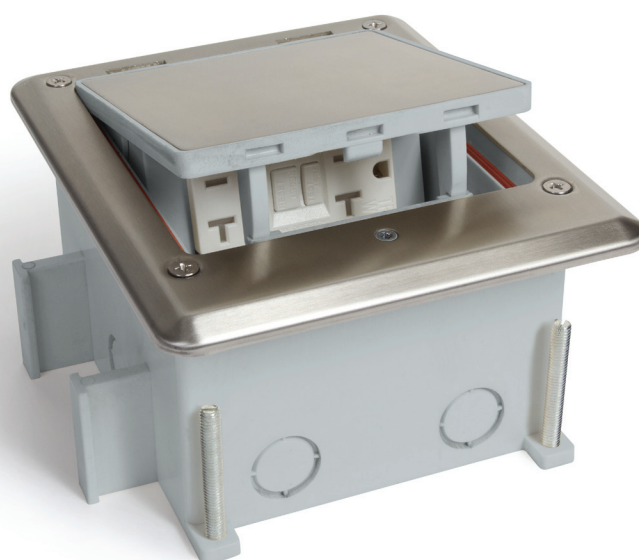
OUTDOOR BOXES

CATALOG #	DESCRIPTION
OB-1-SP	Outdoor floor box with stainless cover; Push Button Open ; Fully IP66 rated water proof (when in closed position). Includes wrench for inside wire connections
OB-1-SH	Outdoor floor box with stainless cover; Hex Key Open ; Fully IP66 rated water proof (when in closed position). Includes wrench for inside wire connections

OB-1-SP



OB-1-SH



BOX SPECIFICATIONS

- ☐ Cover is 6 7/8" L x 5 1/16" W
- ☐ Overall height with box is 3 5/8" minimum depth can be adjusted upwards of 1 3/4"
- ☐ Box dimensions are 5 1/4" L x 4 3/4" W
(the cover hangs over more on one side of the box than the other)

FEATURES & BENEFITS

- ☐ **Intertek IP66 RATED BOX** (when in closed position)
- ☐ Tamper Proof opening (with hex key option)
- ☐ Gangable; Can be used indoor or outdoor
- ☐ Includes weather resistant U.L. listed receptacle
- ☐ Patent protected
- ☐ **Stainless Steel #316**: increases general corrosion resistance, improves resistance to pitting from chloride ion solutions, and provides increased strength at elevated temperatures.