

## FEATURES & SPECIFICATIONS

**INTENDED USE** — The RTL combines digital LED lighting and controls technologies with patented high-performance optical design to offer the most advanced luminaire for general-ambient lighting applications. High-efficacy light engine delivers long life and excellent color, ensuring a superior quality lighting installation that is highly efficient and sustainable.

**CONSTRUCTION** — Rugged, one-piece cold-rolled steel reflector assembly with embossed facets. Coated polyester powder-paint after fabrication.

Rigid structure with ballast box and end plates. End plates include integral T-bar clips.

Impact-modified acrylic prismatic refractor

Luminaires may be mounted end-to-end and continuously wired.

**OPTICS** — Volumetric illumination is delivered by creating an optimal mix of light to walls, partitions, vertical and horizontal work surfaces — rendering the interior space, objects and occupants in a more balanced, complementary luminous environment.

Light distribution is carefully controlled at high angles, providing just enough luminous flux to create the volumetric effect.

Linear faceted reflector cavity softens and distributes light into the space while minimizing luminous contrast between the fixture and ceiling.

Sloped end plates provide a smooth, luminous transition between fixture and ceiling while enhancing the perception of fixture depth.

**ELECTRICAL** — Long-life LEDs, coupled with high-efficiency drivers, provide superior quantity and quality of illumination for extended service life. RTL is rated to deliver L90 performance for 60,000 hours.

Optional integrated nLight® controls make each luminaire addressable - allowing it to digitally communicate with other nLight enabled controls such as dimmers, switches, occupancy sensors and photocontrols. Simply connect all the nLight enabled control devices and the RTL luminaires using standard CAT-5 cabling. Unique plug-and-play convenience as devices and luminaires automatically discover each other and self-commission.

Lumen Management: Unique lumen management system (option N80) provides onboard intelligence that actively manages the LED light source so that constant lumen output is maintained over the system life, preventing the energy waste created by the traditional practice of over-lighting.

Step-level dimming option allows system to be switched to 50% power for compliance with common energy codes while maintaining fixture appearance.

eldoLED driver options deliver choice of dimming range, and choice of control, while assuring flicker-free, low current inrush, 89% efficiency and low EMI.

Driver disconnect provided where required to comply with US and Canadian codes.

**INSTALLATION** — Drivers and internal components accessed via plenum. Driver tray may be removed from fixture during service. Suitable for damp location.

Maintenance: LED boards include plug-in connectors for easy replacement or servicing.

**LISTINGS** — CSA Certified to meet U.S. and Canadian standards. IC rated.

Tested to LM80 standards. IC rated. DesignLights Consortium® (DLC) Premium qualified product. Not all versions of this product may be DLC Premium qualified. Please check the DLC Qualified Products List at [www.designlights.org/QPL](http://www.designlights.org/QPL) to confirm which versions are qualified.

Protected by one or more of US Patent Nos. 7,229,192; D541,467; D541,468; D544,633; D544,634; D544,992. D544,933 and additional patents pending.

**WARRANTY** — 5-year limited warranty. Complete warranty terms located at [www.acuitybrands.com/CustomerResources/Terms\\_and\\_conditions.aspx](http://www.acuitybrands.com/CustomerResources/Terms_and_conditions.aspx)

Note: Actual performance may differ as a result of end-user environment and application.

All values are design or typical values, measured under laboratory conditions at 25°C.

Specifications subject to change without notice.

Catalog Number
Notes
Type



Volumetric Lighting

# 2RTL

2' X 4'  
LED



eldoLED



### INDUSTRY RECOGNITION/AWARDS



### A+ Capable Luminaire

This item is an A+ capable luminaire, which has been designed and tested to provide consistent color appearance and out-of-the-box control compatibility with simple commissioning.

- All configurations of this luminaire meet the Acuity Brands' specification for chromatic consistency
- This luminaire is part of an A+ Certified solution for nLight® control networks when ordered with drivers marked by a shaded background\*
- This luminaire is part of an A+ Certified solution for nLight control networks, providing advanced control functionality at the luminaire level, when selection includes driver and control options marked by a shaded background\*

To learn more about A+, visit [www.acuitybrands.com/aplus](http://www.acuitybrands.com/aplus).

\*See ordering tree for details

# 2RTL Volumetric Recessed Lighting 2'x4'



A+ Capable options indicated by this color background.

## ORDERING INFORMATION

Lead times will vary depending on options selected. Consult with your sales representative.

**Example:** 2RTL4 48L EZ1 LP835 N80

2RTL4		Air function		Lumens		Voltage		Driver		Color temperature		Controls <sup>5</sup>		Option																																							
2RTL4	Recessed 2X4 LED	(blank) CAS	No air Center air slots (air removal)	30L	3000 <sup>1</sup>	(blank)	MVOLT (120 - 277V)	EZ1	eldoLED dims to 1% (0-10 volt dimming)	LP830	3000 K, 82 CRI	(blank)	No controls	EL7L	700 nominal lumen battery pack (non-CEC compliant)																																						
				40L	4000 <sup>1</sup>											347	347 <sup>2</sup>	EZB	eldoLED dims to dark (0-10 volt dimming)	LP835	3500 K, 82 CRI	N80	nLight with 80% lumen management	E14L	1400 nominal lumen battery pack (non-CEC compliant)																												
				48L	4800 <sup>1</sup>																					GZ1	Dims to 1% (0-10V dimming) <sup>3</sup>	LP840	4000 K, 82 CRI	N80EMG	nLight with 80% lumen management for use with generator supply EM power <sup>6</sup>	E10WLC	EM Self-Diagnostic battery pack, 10W Constant Power, CEC compliant																				
				60L	6000 <sup>1</sup>																													GZ10	Dims to 10% (0-10V dimming) <sup>3</sup>	LP850	5000 K, 82 CRI	N100	nLight without lumen management	CP	Chicago plenum												
				72L	7200 <sup>1</sup>																																					EDB	eldoLED DALI <sup>3</sup>	N100EMG	nLight without lumen management for use with generator supply EM power <sup>6</sup>								
																																														EXB	eldoLED DMX/RDM <sup>3</sup>						
																																																SLD	Step-level dimming <sup>3</sup>				
																																																		EXA1	Dims to 1%, XPoint wireless enabled <sup>3,4</sup>		
																																																				EXAB	Dims to dark, XPoint wireless enabled <sup>3,4</sup>

<b>Accessories:</b> Order as separate catalog number.	
DGA24	Drywall ceiling adaptor, unit installation

### Notes

- 1 Approximate lumen output.
- 2 Not available with EL battery packs or SLD driver.
- 3 Not available with N80, N80EMG, N100, or N100EMG.
- 4 Gateway not included. Requires on-site commissioning. Visit [www.lightingcontrols.com/XPointWireless](http://www.lightingcontrols.com/XPointWireless) for more information.
- 5 nLight access limitations with EZB.
- 6 nLight EMG option requires a connection to existing nLight network. Power is provided from a separate N80 or N100 enabled fixture.

### Performance Data

Lumen Package	Lumens	Input Watts	LPW
30L LP830	3010	30.45	99
30L LP835	3100	30.45	102
30L LP840	3191	30.45	105
30L LP850	3304	30.45	109
40L LP830	3913	38.52	112
40L LP835	4118	38.52	118
40L LP840	4305	38.52	124
40L LP850	4416	38.36	115
48L LP830	4545	46.58	97
48L LP835	4786	46.58	103
48L LP840	5027	46.58	108
48L LP850	5147	46.52	111
60L LP830	5178	54.8	94
60L LP835	5418	54.8	99
60L LP840	5689	54.8	104
60L LP850	5870	54.8	107
72L LP830	6653	71.08	93
72L LP835	6984	71.08	98
72L LP840	7315	71.08	103
72L LP850	7580	71.08	107

### How to Estimate Delivered Lumens in Emergency Mode

Use the formula below to estimate the delivered lumens in emergency mode.

$$\text{Delivered Lumens} = 1.25 \times P \times \text{LPW}$$

P = Output power of emergency driver. P = 10W for E10WLC option.

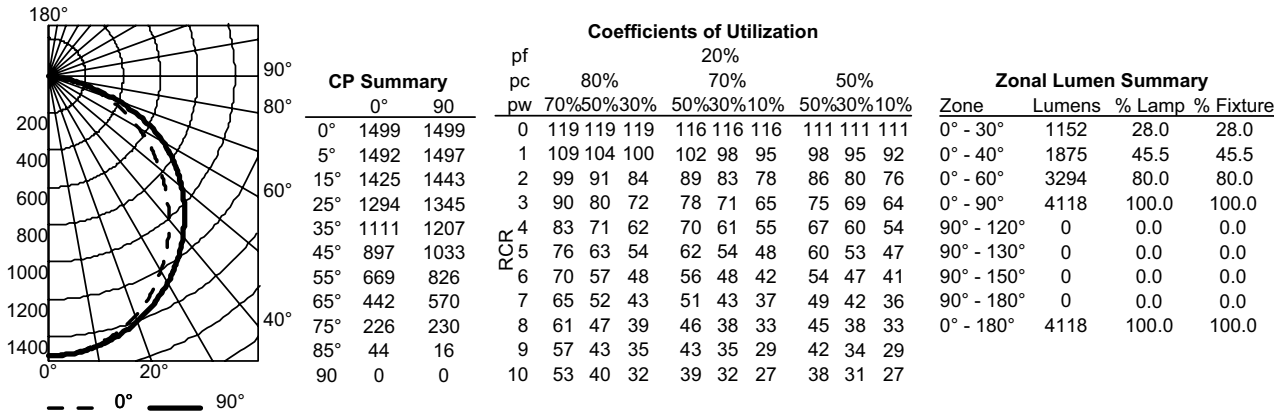
LPW = Lumen per watt rating of the luminaire. This information is available on the ABL luminaire spec sheet.

LPW = Lumen per watt rating of the luminaire. LPW information available in Performance Data section.

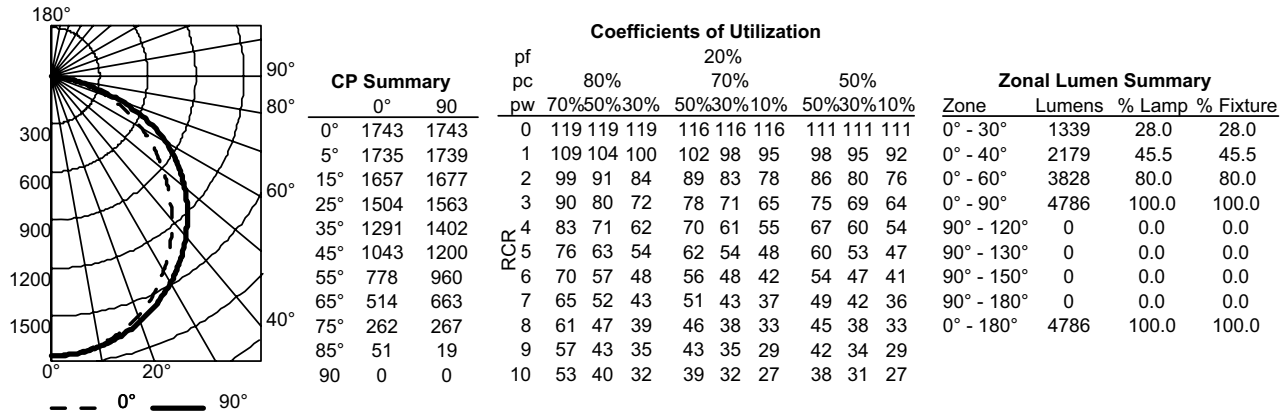
# 2RTL Volumetric Recessed Lighting 2'x4'

## PHOTOMETRICS

2RTL4 40L LP835, 4,118 delivered lumens, test no. LTL25588P4, tested in accordance to IESNA LM-79.



2RTL4 48L LP835, 4,786 delivered lumens, test no. LTL25588P8, tested in accordance to IESNA LM-79.

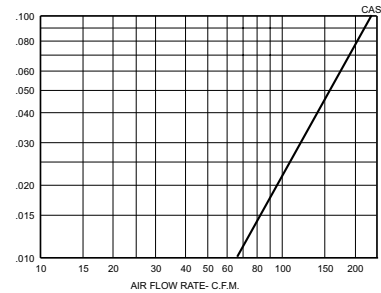
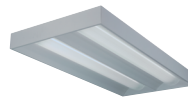


### nLight® Control Accessories:

Order as separate catalog number. Visit [www.sensorswitch.com/nLight](http://www.sensorswitch.com/nLight) for complete listing of nLight controls.

WallPod stations	Model number	Occupancy sensors	Model number
On/Off	nPODM [color]	Small motion 360°, ceiling (PIR / dual tech)	nCM 9 / nCM PDT 9
On/Off & Raise/Lower	nPODM DX [color]	Large motion 360°, ceiling (PIR / dual tech)	nCM 10 / nCM PDT 10
Graphic Touchscreen	nPOD GFX	Wall switch with raise/lower	nWSXPDTLVDX
Photocell controls	Model number	Cat-5 cable bundles (plenum rated)	Model number
On/Off & Dimming	nCM ADCX	10', 15 pieces per bundle	CAT5 10FT
		30', 15 pieces per bundle	CAT5 30FT

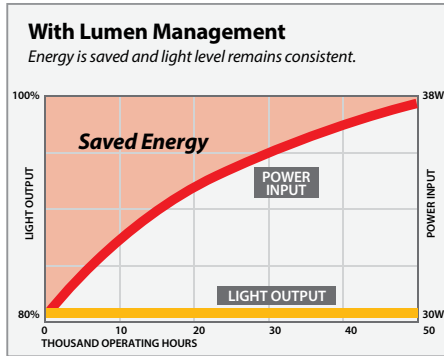
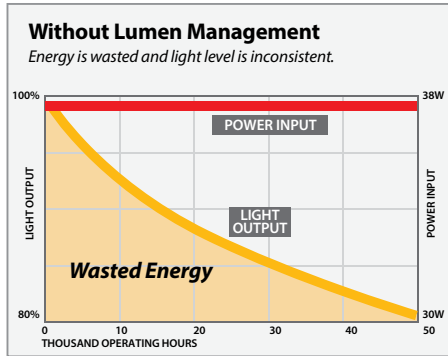
### RTL with Air Handling



# 2RTL Volumetric Recessed Lighting 2'x4'

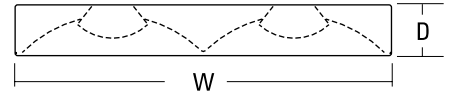
## Constant Lumen Management

Enabled by the embedded nLight control, the RTL actively tracks its run-time and manages its light source such that constant lumen output is maintained over the system life. Referred to as lumen management, this feature eliminates the energy waste created by the traditional practice of over-lighting.



## Dimensions

All dimensions are inches (centimeters) unless otherwise specified.



- Specifications
- Length: 48 (121.9)
  - Width: 24 (61.0)
  - Depth: 3-1/8 (7.9)