

Metering Equipment

Contents

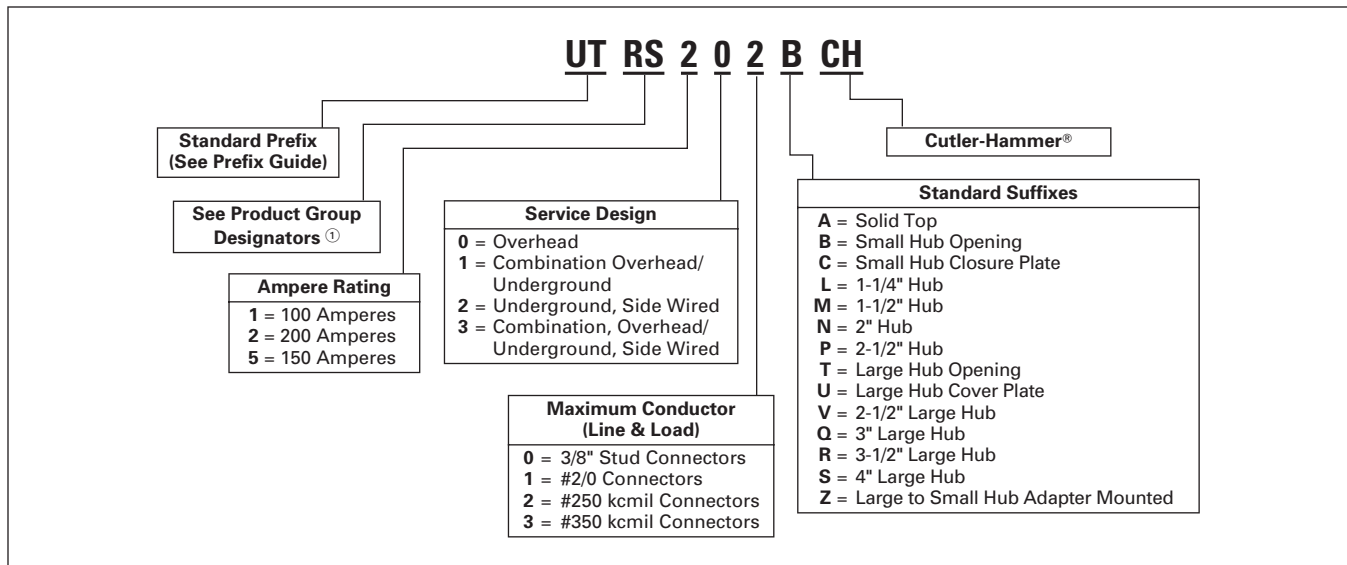
<i>Description</i>	<i>Page</i>
Meter Socket Catalog Number Logic	
Catalog Numbering System	2
Product Selection by Utility	
CenterPoint Energy (Reliant & HL&P)	4
AEP WEST (Arkansas, Louisiana, Oklahoma, Texas)	5
CoServ Utility	6
Texas New Mexico Power Utility	7
ONCOR (Texas Utilities — TXU Area)	8
Xcel Utility	9
Technical Data	
Knockout Drawings	10
Meter Packs	
Product Description	11
Product Selection	11
Main Tenant Circuit Breakers	
Product Description	13
Product Selection	13
Dimensions and Knockouts	14
Accessories	
Meter Packs	16



Group Metering

Catalog Numbering System

Table 1. "RS" Group Catalog Numbering System



① "RS" Group = Residential Service, Single Position.

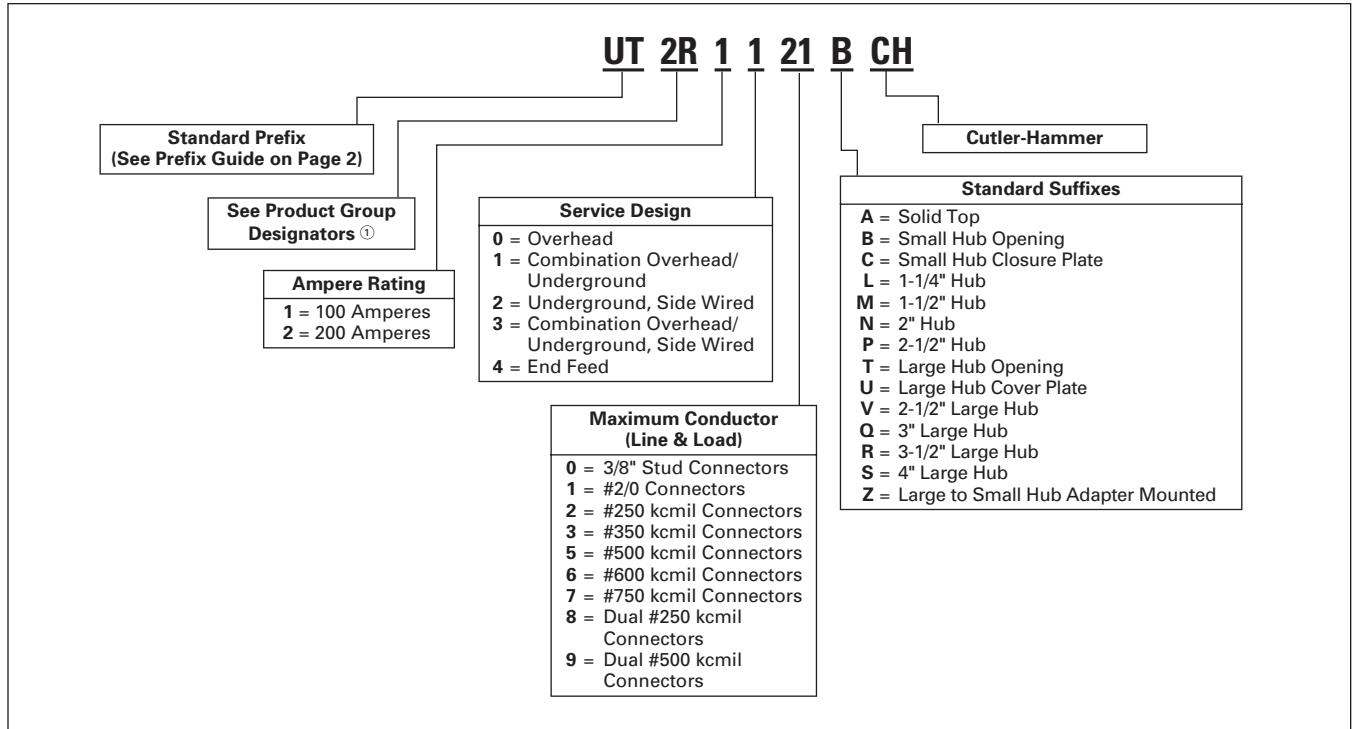
Note: Some sockets that are built for specific utilities have their own unique catalog numbers. These can be found on the utility selection pages.

Meter Socket "Prefix" Guide

A	Aluminum enclosure
B	Barrel lock provision, for an exposed INNER-TITE® or Brooks barrel lock; unit includes an internal lock receiver bracket.
F	Barrel lock with guard provision, for a lock guard INNER-TITE or Brooks barrel lock; unit includes an internal lock receiver bracket.
G	Grounded fifth terminal (9 o'clock position)
H	Horn bypass
I	Inhibitor installed in wire connectors
M	Temporary meter cover (waxed cardboard)
N	No sealing ring (applies only to ring style sockets)
R	Ring style socket
S	Aluminum screw type sealing ring (applies only to ring style sockets)
T	Grounding connector (#14 – #2 Cu) for Tri-Plex ground
TT	Two (2) grounding connectors (#14 – #2 Cu) for Quad-Plex ground
U	UL® (Underwriters Laboratories) labeled
Z	5/16" Hex head connector screw in place of slotted (100 amperes only)

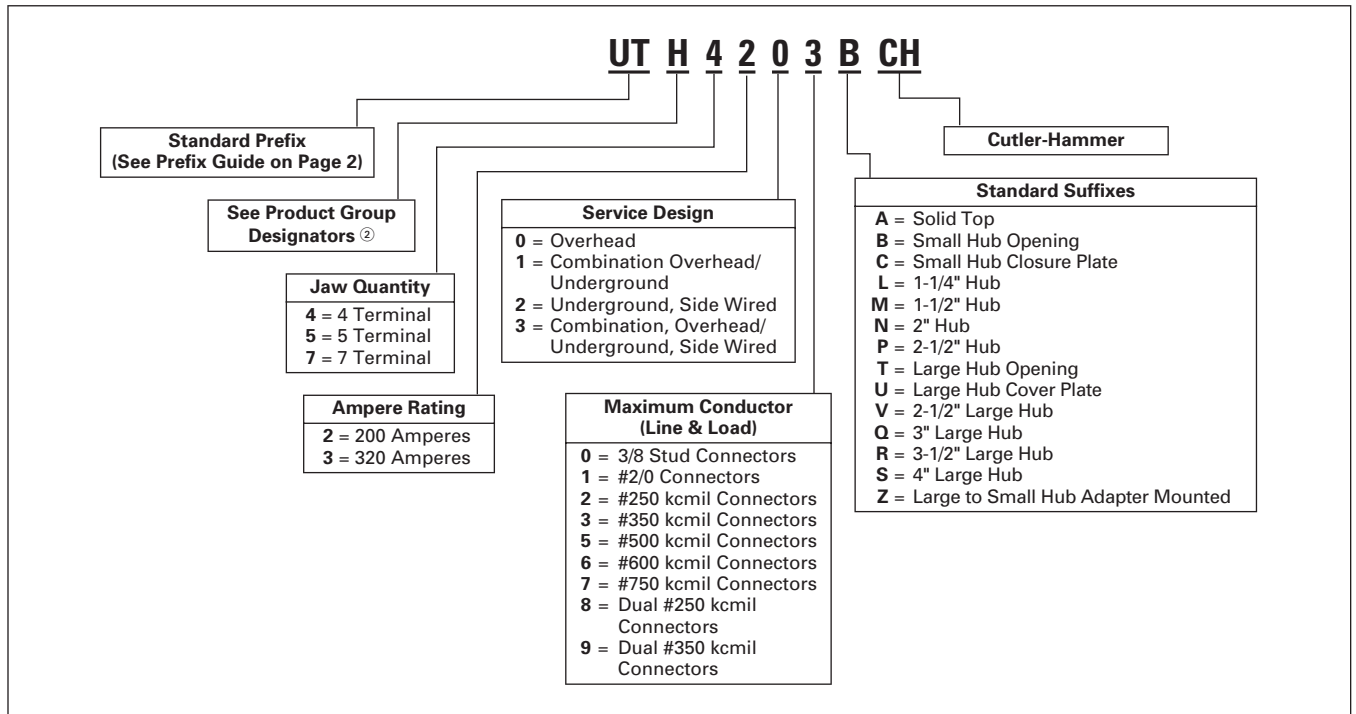
Note: The "U" prefix is always used first followed by other prefixes required in alphabetical order.

Table 2. "2R-6R" and "2H-6H" Group Catalog Numbering System



① "2R-6R" Group = Residential Service, Multiple Position.
"2H-6H" Group = Commercial or Residential Service, Multiple Position.

Table 3. "H" Group Catalog Numbering System



② "H" Group = Commercial or Residential Service, Single Position (lever bypass).

Product Selection by Utility

CenterPoint Energy (Reliant & HL&P)



**100 Ampere Single-Position
Meter Socket**



**200 Ampere Single-Position
Meter Socket**

Table 4. CenterPoint Energy (Reliant & HL&P) Approved Meter Sockets — Dimensions in Inches

Cutler-Hammer Catalog Number	Description	Dimensions			Connections		Concentric Knockouts				
		H	W	D	Line	Load	1	2	3	4	5
100 – 125 Ampere Single-Position — Residential — Single-Phase											
UNRRS101BEUSCH	125 A, 4 Terminal, SM Hub Open, OH, Ring Style	10.88	8.00	3.50	#8 – 2/0	#8 – 2/0	1.50	1.50	2.00	1.25	—
UNRRS111BEUSCH	125 A, 4 Terminal, SM Hub Open, OH/UG, Ring Style	14.00	11.00	4.38	#8 – 2/0	#8 – 2/0	2.50	2.50	2.50	2.50	.50
UNRRS111AEUSCH	125 A, 4 Terminal, Solid Top, UG, Ring Style	14.00	11.00	4.38	#8 – 2/0	#8 – 2/0	2.50	2.50	2.50	2.50	.50
200 Ampere Single-Position — Residential — Single-Phase											
UNRRS202BEUSCH	200 A, 4 Terminal, SM Hub Open, OH, Ring Style	14.00	8.00	4.38	#8 – 250 kcmil	#8 – 250 kcmil	2.50	2.50	2.50	—	.50
UNRRS213AEUSCH	200 A, 4 Terminal, Solid Top, UG, Ring Style	15.00	11.00	4.38	#8 – 350 kcmil	#8 – 350 kcmil	2.50	2.50	2.50	2.50	.50
UNRRS213BEUSCH	200 A, 4 Terminal, SM Hub Open, OH/UG, Ring Style	15.00	11.00	4.38	#8 – 350 kcmil	#8 – 350 kcmil	2.50	2.50	2.50	2.50	.50
UNRRS213CEUSCH	200 A, 4 Terminal, SM Hub Cover Plate, OH/UG, Ring Style	15.00	11.00	4.38	#8 – 350 kcmil	#8 – 350 kcmil	2.50	2.50	2.50	2.50	.50
200 Ampere Commercial — Residential											
1009097CH	200 A, 7 Terminal, Hub Cover Plate, Ring Style ^①	19.00	13.00	5.06	#6 – 250 kcmil	#6 – 250 kcmil	3.00	2.50	3.00	3.00	.50
400 – 600 Ampere Residential/Commercial K Base Sockets											
CH8043K7	480/600 A, 7 Terminal, 3-Phase, OH/UG, LG Hub Cover Plate	43.00	20.00	6.00	1/2 – 20 Stud	1/2 – 20 Stud	4.00	4.00	4.00	4.00	.75
CH8523K4	400 A, 4 Terminal, 1-Phase, OH/UG, LG Hub Cover Plate ^②	36.00	18.00	6.10	1/2 – 20 Stud	1/2 – 20 Stud	3.50	3.50	4.00	4.00	.75

^① Non-lever bypass.

^② Steel enclosure.

Table 5. Cutler-Hammer Meter Socket Accessories

Cutler-Hammer Catalog Number	Description	Cutler-Hammer Catalog Number	Description
ARP00003CH1	1.00-Inch Hub	ARP00008CH	Small Hub Closure Plate — Aluminum
ARP00004CH12	1.25-Inch Hub	ARP00016CHB	Large Hub Closure Plate
ARP00005CH15	1.50-Inch Hub	ARP00015CHAP	Hub Adapter Plate — Large to Small
ARP00006CH2	2.00-Inch Hub — Small Opening	ARP00035CHJ	Replacement — Plug-in Fifth Terminal (R and RS Models Only)
ARP00007CH25	2.50-Inch Hub — Small Opening	ARP00039CH	Replacement Block Assembly for 100 A Sockets — 2/0 Maximum
ARP00017CH2	2.00-Inch Hub — Large Opening	ARP00048CH	Replacement Block Assembly for 200 A Sockets — 350 Maximum
ARP00018CH25	2.50-Inch Hub — Large Opening	ARP00354CH	Replacement Block Assembly for 150 A Sockets — 250 Maximum
ARP00019CH3	3.00-Inch Hub — Large Opening	ARP00129CH	#4 – 600 kcmil Lug
ARP00021CH4	4.00-Inch Hub — Large Opening	ARP00427CH	#6 – 350 kcmil Dual Lug
ARP00002CHB	Small Hub Closure Plate	ARP00119CH	#6 – 350 kcmil Lug

AEP WEST (Arkansas, Louisiana, Oklahoma, Texas)



200 Ampere Single-Position Meter Socket



200 Ampere Lever Bypass Meter Socket



200 Ampere Multi-Position Meter Socket

Table 6. AEP WEST (Arkansas, Louisiana, Oklahoma, Texas) Approved Meter Sockets — Dimensions in Inches

Cutler-Hammer Catalog Number	Description	Dimensions			Connections		Concentric Knockouts				
		H	W	D	Line	Load	1	2	3	4	5
100 – 125 Ampere Single-Position — Residential											
UHTRS101BCH	125 A, 4 Terminal, SM Hub Open, OH ①②	10.88	8.00	3.50	#8 – 2/0	#8 – 2/0	1.50	1.50	2.00	1.25	—
200 Ampere Single-Position — Residential											
UHTRS202BCH	200 A, 4 Terminal, SM Hub Open, OH ①②	14.00	8.00	4.38	#8 – 250 kcmil	#8 – 250 kcmil	2.50	2.50	2.50	—	0.50
UAHTRS202BFLCH	200 A, 4 Terminal, SM Hub Open, OH ①②③	14.00	8.00	4.38	#8 – 250 kcmil	#8 – 250 kcmil	2.50	2.50	2.50	—	0.50
UAHTRS202BSHCH	200 A, 4 Terminal, SM Hub Open, OH ①②③	14.00	8.00	4.38	#8 – 250 kcmil	#8 – 250 kcmil	2.50	2.50	2.50	—	1.50
UHTRS233CCH	200 A, 4 Terminal, SM Hub Cover Plate, OH/UG ①②④	17.13	13.00	4.94	#8 – 350 kcmil	#8 – 350 kcmil	2.50	2.50	3.00	2.50	0.50
UHTRS223ACH	200 A, 4 Terminal, Solid Top, UG ①②④	13.00	13.00	5.00	#8 – 350 kcmil	#8 – 350 kcmil	2.50	2.50	3.00	2.50	0.50
UAHTRS223AFLCH	200 A, 4 Terminal, Solid Top, UG ①②③④	13.00	13.00	5.00	#8 – 350 kcmil	#8 – 350 kcmil	2.50	2.50	3.00	2.50	0.50
UAHTRS223ASHCH	200 A, 4 Terminal, Solid Top, UG ①②③④	13.00	13.00	5.00	#8 – 350 kcmil	#8 – 350 kcmil	2.50	2.50	3.00	2.50	0.50
320 Ampere Commercial — Residential w/ Lever Bypass											
UTH4330TCH	320 A, 4 Terminal, LG Hub Open, OH/UG ①⑤	36.63	15.00	5.69	3/8" Stud	3/8" Stud	3.00	3.00	3.00	3.00	0.50
UTH4336TCH	320 A, 4 Terminal, LG Hub Open, OH/UG ①⑤⑥	36.63	15.00	5.69	#4 – 600 kcmil	#4 – 600 kcmil	3.00	3.00	3.00	3.00	0.50
UATH4330TCH	320 A, 4 Terminal, LG Hub Open, OH/UG ①③⑤	36.63	15.00	5.69	3/8" Stud	3/8" Stud	3.00	3.00	3.00	3.00	0.50
UATH4336TCH	320 A, 4 Terminal, LG Hub Open, OH/UG ①③⑤⑥	36.63	15.00	5.69	#4 – 600 kcmil	#4 – 600 kcmil	3.00	3.00	3.00	3.00	0.50
UTH7330TCH	320 A, 7 Terminal, LG Hub Open, OH/UG ①⑤	39.88	20.00	6.50	3/8" Stud	3/8" Stud	4.00	4.00	4.00	4.00	0.50
UTH7336TCH	320 A, 7 Terminal, LG Hub Open, OH/UG ①⑤⑥	39.88	20.00	6.50	#4 – 600 kcmil	#4 – 600 kcmil	4.00	4.00	4.00	4.00	0.50
UATH7330TCH	320 A, 7 Terminal, LG Hub Open, OH/UG ①③⑤	39.88	20.00	6.50	3/8" Stud	3/8" Stud	4.00	4.00	4.00	4.00	0.50
UATH7336TCH	320 A, 7 Terminal, LG Hub Open, OH/UG ①③⑤⑥	39.88	20.00	6.50	#4 – 600 kcmil	#4 – 600 kcmil	4.00	4.00	4.00	4.00	0.50
200 Ampere Single-Position — Commercial w/ Lever Bypass											
UTH7213B or TCH	200 A, 7 Terminal, SM or LG Hub Open, OH/UG ①⑤	19.00	13.00	4.94	#6 – 350 kcmil	#6 – 350 kcmil	3.00	2.50	3.00	3.00	0.50
UATH7213B or TCH	200 A, 7 Terminal, SM or LG Hub Open, OH/UG ①③⑤	19.00	13.00	4.94	#6 – 350 kcmil	#6 – 350 kcmil	3.00	2.50	3.00	3.00	0.50
200 Ampere Multi-Position Sockets — Residential											
UHT2R2332TCH	200 A, 2 Position, LG Hub Open, OH/UG, Center Feed ①②	14.13	24.31	5.38	#6 – 350 kcmil	#8 – 250 kcmil	2.50	2.50	3.00	2.50	0.50
UHT3R2332TCH	200 A, 3 Position, LG Hub Open, OH/UG, Center Feed ①②	14.13	32.47	5.38	#6 – 350 kcmil	#8 – 250 kcmil	2.50	2.50	3.00	2.50	0.50
UHT4R2352TCH	200 A, 4 Position, LG Hub Open, OH/UG, Center Feed ①②	14.13	40.63	5.38	1/0 – 500 kcmil	#8 – 250 kcmil	2.50	2.50	3.00	2.50	0.75
UHT5R2392TTCH	200 A, 5 Position, LG Hub Open, OH/UG, Center Feed ①②	14.13	54.78	5.38	1/0 – 500 kcmil	#8 – 250 kcmil	2.50	2.50	3.00	2.50	0.75
UHT6R2392TTCH	200 A, 6 Position, LG Hub Open, OH/UG, Center Feed ①②	14.13	62.94	5.38	1/0 – 500 kcmil	#8 – 250 kcmil	2.50	2.50	3.00	2.50	0.75

- ① Ground connection.
- ② Horn bypass.
- ③ Aluminum enclosure.
- ④ Offset design.
- ⑤ Lever bypass.
- ⑥ 600 kcmil line and load lugs.

Table 7. Cutler-Hammer Meter Socket Accessories

Cutler-Hammer Catalog Number	Description	Cutler-Hammer Catalog Number	Description
ARP00003CH1	1.00-Inch Hub	ARP00008CH	Small Hub Closure Plate — Aluminum
ARP00004CH12	1.25-Inch Hub	ARP00016CHB	Large Hub Closure Plate
ARP00005CH15	1.50-Inch Hub	ARP00015CHAP	Hub Adapter Plate — Large to Small
ARP00006CH2	2.00-Inch Hub — Small Opening	ARP00035CHJ	Replacement — Plug-in Fifth Terminal (R and RS Models Only)
ARP00007CH25	2.50-Inch Hub — Small Opening	ARP00039CH	Replacement Block Assembly for 100 A Sockets — 2/0 Maximum
ARP00017CH2	2.00-Inch Hub — Large Opening	ARP00048CH	Replacement Block Assembly for 200 A Sockets — 350 Maximum
ARP00018CH25	2.50-Inch Hub — Large Opening	ARP000354CH	Replacement Block Assembly for 150 A Sockets — 250 Maximum
ARP00019CH3	3.00-Inch Hub — Large Opening	ARP00129CH	#4 – 600 kcmil Lug
ARP00021CH4	4.00-Inch Hub — Large Opening	ARP00427CH	#6 – 350 kcmil Dual Lug
ARP00002CHB	Small Hub Closure Plate	ARP00119CH	#6 – 350 kcmil Lug

Product Selection by Utility

CoServ Utility



**200 Ampere Single-Position
Meter Socket**



**320 Ampere Single-Position
Meter Socket**

Table 8. CoServ Utility Approved Meter Sockets — Dimensions in Inches

Cutler-Hammer Catalog Number	Description	Dimensions			Connections		Concentric Knockouts				
		H	W	D	Line	Load	1	2	3	4	5
200 Ampere Single-Position — Residential											
UTRS213CCH	200 A, 4 Terminal, SM Hub Cover Plate, OH/UG ①	15.00	11.00	4.38	#8 – 350 kcmil	#8 – 350 kcmil	2.50	2.50	2.50	2.50	.50
320 Ampere Commercial — Residential w/ Lever Bypass											
1006344ACH	320 A, 4 Terminal, LG Hub Cover Plate, OH/UG ①②③	28.50	18.00	5.69	Dual 350 kcmil	Dual 350 kcmil	3.50	3.50	3.50	3.50	.75
UTH7339UCH	320 A, 7 Terminal, LG Hub Cover Plate, OH/UG ①②	39.88	20.00	6.50	Dual 350 kcmil	Dual 350 kcmil	4.00	4.00	4.00	4.00	.50
200 Ampere Single-Position — Commercial w/ Lever Bypass											
UTH7203NCH	200 A, 7 Terminal, 2-Inch Hub Installed, OH ①②	19.00	10.50	4.94	#6 – 350 kcmil	#6 – 350 kcmil	3.00	2.50	3.00	3.00	.50
UTH7233UCH	200 A, 7 Terminal, LG Hub Open, OH/UG ①②	27.00	16.00	5.63	#6 – 350 kcmil	#6 – 350 kcmil	3.00	3.00	3.00	3.00	.50

① Ground connection.

② Lever bypass.

③ Anti-inversion clip installed.

Table 9. Cutler-Hammer Meter Socket Accessories

Cutler-Hammer Catalog Number	Description	Cutler-Hammer Catalog Number	Description
ARP00003CH1	1.00-Inch Hub	ARP00008CH	Small Hub Closure Plate — Aluminum
ARP00004CH12	1.25-Inch Hub	ARP00016CHB	Large Hub Closure Plate
ARP00005CH15	1.50-Inch Hub	ARP00015CHAP	Hub Adapter Plate — Large to Small
ARP00006CH2	2.00-Inch Hub — Small Opening	ARP00035CHJ	Replacement — Plug-in Fifth Terminal (R and RS Models Only)
ARP00007CH25	2.50-Inch Hub — Small Opening	ARP00039CH	Replacement Block Assembly for 100 A Sockets — 2/0 Maximum
ARP00017CH2	2.00-Inch Hub — Large Opening	ARP00048CH	Replacement Block Assembly for 200 A Sockets — 350 Maximum
ARP00018CH25	2.50-Inch Hub — Large Opening	ARP00354CH	Replacement Block Assembly for 150 A Sockets — 250 Maximum
ARP00019CH3	3.00-Inch Hub — Large Opening	ARP00129CH	#4 – 600 kcmil Lug
ARP00021CH4	4.00-Inch Hub — Large Opening	ARP00427CH	#6 – 350 kcmil Dual Lug
ARP00002CHB	Small Hub Closure Plate	ARP00119CH	#6 – 350 kcmil Lug

Texas New Mexico Power Utility



200 Ampere Single-Position Meter Socket



200 Ampere Lever Bypass Meter Socket



200 Ampere Single-Position Offset Meter Socket

Table 10. Texas New Mexico Power Utility Approved Meter Sockets — Dimensions in Inches

Cutler-Hammer Catalog Number	Description	Dimensions			Connections		Concentric Knockouts				
		H	W	D	Line	Load	1	2	3	4	5
100 – 125 Ampere Single-Position — Residential											
UTRS101BCH	125 A, 4 Terminal, SM Hub Open, OH ①	10.88	8.00	3.50	#8 – 2/0	#8 – 2/0	1.50	1.50	2.00	1.25	—
UTRS111BCH	125 A, 4 Terminal, SM Hub Open, OH/UG ①	14.00	11.00	4.38	#8 – 2/0	#8 – 2/0	2.50	2.50	2.50	2.50	.50
200 Ampere Single-Position — Residential											
UTRS202BCH	200 A, 4 Terminal, SM Hub Open, OH ①	14.00	8.00	4.38	#8 – 250 kcmil	#8 – 250 kcmil	2.50	2.50	2.50	—	.50
UTRS223ACH	200 A, 4 Terminal, Offset Design, Solid Top, UG ①	13.00	13.00	5.00	#8 – 350 kcmil	#8 – 350 kcmil	2.50	2.50	3.00	2.50	.50
320 Ampere Commercial — Residential w/ Lever Bypass											
UTH4300TCH	320 A, 4 Terminal, LG Hub Open, OH ②	34.50	13.00	5.00	3/8" Stud	3/8" Stud	3.00	3.00	3.00	3.00	.50
UTH4330TCH	320 A, 4 Terminal, LG Hub Open, OH/UG ①②	36.63	15.00	5.69	3/8" Stud	3/8" Stud	3.00	3.00	3.00	3.00	.50
UTH7300TCH	320 A, 7 Terminal, LG Hub Open, OH ②	34.50	15.00	5.69	3/8" Stud	3/8" Stud	3.50	3.50	3.50	3.50	.50
UTH7330TCH	320 A, 7 Terminal, LG Hub Open, OH/UG ①②	39.88	20.00	6.50	3/8" Stud	3/8" Stud	4.00	4.00	4.00	4.00	.50
200 Ampere Single-Position — Commercial w/ Lever Bypass											
UTC4213BCH	200 A, 4 Terminal, SM Hub Open, OH/UG ①②③	19.00	13.00	4.94	#6 – 350 kcmil	#6 – 350 kcmil	3.00	2.50	3.00	3.00	.50
UTH4213BCH	200 A, 4 Terminal, SM Hub Open, OH/UG ①②	19.00	13.00	4.94	#6 – 350 kcmil	#6 – 350 kcmil	3.00	2.50	3.00	3.00	.50
UTH5213BNDCH	200 A, 5 Terminal, SM Hub Open, OH/UG ①②④	19.00	13.00	4.94	#6 – 350 kcmil	#6 – 350 kcmil	3.00	2.50	3.00	3.00	.50
UTH7213B or TCH	200 A, 7 Terminal, SM or LG Hub Open, OH/UG ①②	19.00	13.00	4.94	#6 – 350 kcmil	#6 – 350 kcmil	3.00	2.50	3.00	3.00	.50
150 Ampere Multi-Position Sockets — Residential — Single-Phase											
UT2R5432BCH	150 A, 2 Position, SM Hub Open, OH/UG, End Feed ①	14.13	20.16	5.38	#6 – 350 kcmil	#8 – 250 kcmil	2.50	2.50	3.00	2.50	.50
UT3R5432BCH	150 A, 3 Position, SM Hub Open, OH/UG, End Feed ①	14.13	28.31	5.38	#6 – 350 kcmil	#8 – 250 kcmil	2.50	2.50	3.00	2.50	.50
UT4R5432BCH	150 A, 4 Position, SM Hub Open, OH/UG, End Feed ①	14.13	36.47	5.38	#6 – 350 kcmil	#8 – 250 kcmil	2.50	2.50	3.00	2.50	.50
UT5R5432TCH	150 A, 5 Position, LG Hub Open, OH/UG, End Feed ①	14.13	44.78	5.38	#6 – 350 kcmil	#8 – 250 kcmil	2.50	2.50	3.00	2.50	.50
200 Ampere Multi-Position Sockets — Residential — Single-Phase											
UT2R2332TCH	200 A, 2 Position, LG Hub Open, OH/UG, Center Feed ①	14.13	24.31	5.38	#6 – 350 kcmil	#8 – 250 kcmil	2.50	2.50	3.00	2.50	.50
UT3R2332TCH	200 A, 3 Position, LG Hub Open, OH/UG, Center Feed ①	14.13	32.47	5.38	#6 – 350 kcmil	#8 – 250 kcmil	2.50	2.50	3.00	2.50	.50
UT4R2352TCH	200 A, 4 Position, LG Hub Open, OH/UG, Center Feed ①	14.13	40.63	5.38	1/0 – 500 kcmil	#8 – 250 kcmil	2.50	2.50	3.00	2.50	.75
UT5R2392TTCH	200 A, 5 Position, LG Hub Open, OH/UG, Center Feed ①	14.13	54.78	5.38	1/0 – 500 kcmil	#8 – 250 kcmil	2.50	2.50	3.00	2.50	.75
UT6R2392TTCH	200 A, 6 Position, LG Hub Open, OH/UG, Center Feed ①	14.13	62.94	5.38	1/0 – 500 kcmil	#8 – 250 kcmil	2.50	2.50	3.00	2.50	.75

- ① Ground connection.
- ② Lever bypass.
- ③ Non-jaw release.
- ④ Center phase disconnect.

Table 11. Cutler-Hammer Meter Socket Accessories

Cutler-Hammer Catalog Number	Description	Cutler-Hammer Catalog Number	Description
ARP00003CH1	1.00-Inch Hub	ARP00008CH	Small Hub Closure Plate — Aluminum
ARP00004CH12	1.25-Inch Hub	ARP00016CHB	Large Hub Closure Plate
ARP00005CH15	1.50-Inch Hub	ARP00015CHAP	Hub Adapter Plate — Large to Small
ARP00006CH2	2.00-Inch Hub — Small Opening	ARP00035CHJ	Replacement — Plug-in Fifth Terminal (R and RS Models Only)
ARP00007CH25	2.50-Inch Hub — Small Opening	ARP00039CH	Replacement Block Assembly for 100 A Sockets — 2/0 Maximum
ARP00017CH2	2.00-Inch Hub — Large Opening	ARP00048CH	Replacement Block Assembly for 200 A Sockets — 350 Maximum
ARP00018CH25	2.50-Inch Hub — Large Opening	ARP00354CH	Replacement Block Assembly for 150 A Sockets — 250 Maximum
ARP00019CH3	3.00-Inch Hub — Large Opening	ARP00129CH	#4 – 600 kcmil Lug
ARP00021CH4	4.00-Inch Hub — Large Opening	ARP00427CH	#6 – 350 kcmil Dual Lug
ARP00002CHB	Small Hub Closure Plate	ARP00119CH	#6 – 350 kcmil Lug

Product Selection by Utility

ONCOR (Texas Utilities — TXU Area)



**200 Ampere Single-Position
Meter Socket**



**200 Ampere Lever Bypass
Meter Socket**



**150 Ampere Multi-Position
Meter Socket**

Table 12. ONCOR (Texas Utilities — TXU Area) Approved Meter Sockets — Dimensions in Inches

Cutler-Hammer Catalog Number	Description	Dimensions			Connections		Concentric Knockouts				
		H	W	D	Line	Load	1	2	3	4	5
150 Ampere Single-Position — Residential											
UTRS502BCH	150 A, 4 Terminal, SM Hub Open, OH ①	14.00	8.00	4.38	#8 – 250 kcmil	#8 – 250 kcmil	2.50	2.50	2.50	—	.50
200 Ampere Single-Position — Residential											
UTRS213CCH	200 A, 4 Terminal, SM Hub Cover Plate, OH/UG ①	15.00	11.00	4.38	#8 – 350 kcmil	#8 – 350 kcmil	2.50	2.50	2.50	2.50	.50
UTRS2138BCH	200 A, 4 Terminal, SM Hub Open, OH/UG ①②	15.00	11.00	4.38	#8 – 350 kcmil	Dual 250 kcmil	2.50	2.50	2.50	2.50	.50
320 Ampere Commercial — Residential w/ Lever Bypass											
UTH43369UCH	320 A, 4 Terminal, LG Hub Cover Plate, OH/UG ①③	36.63	15.00	5.69	#4 – 600 kcmil	Dual 350 kcmil	3.50	3.50	3.50	3.50	.50
UTH73069THLCH	320 A, 7 Terminal, LG Hub Open, OH ③	34.50	15.00	5.69	#4 – 600 kcmil	Dual 350 kcmil	3.50	3.50	3.50	3.50	.50
UTH73369THLCH	320 A, 7 Terminal, LG Hub Open, OH/UG ①③	39.88	20.00	6.50	#4 – 600 kcmil	Dual 350 kcmil	4.00	4.00	4.00	4.00	.50
200 Ampere Single-Position — Commercial w/ Lever Bypass											
UTH4213BCH	200 A, 4 Terminal, SM Hub Open, OH/UG ①③	19.00	13.00	4.94	#6 – 350 kcmil	#6 – 350 kcmil	3.00	2.50	3.00	3.00	.50
UTH5213BNDCH	200 A, 5 Terminal, SM Hub Open, OH/UG ①③	19.00	13.00	5.00	#6 – 350 kcmil	#6 – 350 kcmil	3.00	2.50	3.00	3.00	.50
UTH7213THLCH	200 A, 7 Terminal, LG Hub Open, OH/UG ①③	19.00	13.00	4.94	#6 – 350 kcmil	#6 – 350 kcmil	3.00	2.50	3.00	3.00	.50
200 Ampere Multi-Position Sockets — Residential — Single-Phase											
UT2R2332TCH	200 A, 2 Position, LG Hub Open, OH/UG, Center Feed ④	14.13	24.31	5.38	#6 – 350 kcmil	#8 – 250 kcmil	2.50	2.50	3.00	2.50	.50
UT3R2332TCH	200 A, 3 Position, LG Hub Open, OH/UG, Center Feed ④	14.13	32.47	5.38	#6 – 350 kcmil	#8 – 250 kcmil	2.50	2.50	3.00	2.50	.50
UT4R2352TCH	200 A, 4 Position, LG Hub Open, OH/UG, Center Feed ④	14.13	40.63	5.38	1/0 – 500 kcmil	#8 – 250 kcmil	2.50	2.50	3.00	2.50	.75
UT5R2392TTCH	200 A, 5 Position, LG Hub Open, OH/UG, Center Feed ④	14.13	54.78	5.38	1/0 – 500 kcmil	#8 – 250 kcmil	2.50	2.50	3.00	2.50	.75
UT6R2392TTCH	200 A, 6 Position, LG Hub Open, OH/UG, Center Feed ④	14.13	62.94	5.38	1/0 – 500 kcmil	#8 – 250 kcmil	2.50	2.50	3.00	2.50	.75

① Ground connection.

② Dual 250 kcmil load lugs.

③ Lever bypass.

④ Center feed.

Table 13. Cutler-Hammer Meter Socket Accessories

Cutler-Hammer Catalog Number	Description	Cutler-Hammer Catalog Number	Description
ARP00003CH1	1.00-Inch Hub	ARP00008CH	Small Hub Closure Plate — Aluminum
ARP00004CH12	1.25-Inch Hub	ARP00016CHB	Large Hub Closure Plate
ARP00005CH15	1.50-Inch Hub	ARP00015CHAP	Hub Adapter Plate — Large to Small
ARP00006CH2	2.00-Inch Hub — Small Opening	ARP00035CHJ	Replacement — Plug-in Fifth Terminal (R and RS Models Only)
ARP00007CH25	2.50-Inch Hub — Small Opening	ARP00039CH	Replacement Block Assembly for 100 A Sockets — 2/0 Maximum
ARP00017CH2	2.00-Inch Hub — Large Opening	ARP00048CH	Replacement Block Assembly for 200 A Sockets — 350 Maximum
ARP00018CH25	2.50-Inch Hub — Large Opening	ARP00354CH	Replacement Block Assembly for 150 A Sockets — 250 Maximum
ARP00019CH3	3.00-Inch Hub — Large Opening	ARP00129CH	#4 – 600 kcmil Lug
ARP00021CH4	4.00-Inch Hub — Large Opening	ARP00427CH	#6 – 350 kcmil Dual Lug
ARP00002CHB	Small Hub Closure Plate	ARP00119CH	#6 – 350 kcmil Lug

Xcel Utility



200 Ampere Lever Bypass
Meter Socket



320 Ampere Lever Bypass
Meter Socket

Table 14. Xcel Utility Approved Meter Sockets — Dimensions in Inches

Cutler-Hammer Catalog Number	Description	Dimensions			Connections		Concentric Knockouts				
		H	W	D	Line	Load	1	2	3	4	5
200 Ampere Single-Position — Residential/Commercial w/ Lever Bypass — Single-Phase											
UGTH4203B or TCH	200 A, 5 Terminal, SM or LG Hub Open, OH ①②	19.00	10.50	4.94	#6 – 350 kcmil	#6 – 350 kcmil	3.00	2.50	3.00	—	.50
UTH5203B or TCH	200 A, 5 Terminal, SM or LG Hub Open, OH ②③	19.00	10.50	4.94	#6 – 350 kcmil	#6 – 350 kcmil	3.00	2.50	3.00	—	.50
UGTH4213B or TCH	200 A, 5 Terminal, SM or LG Hub Open, OH/UG ①②	19.00	13.00	4.94	#6 – 350 kcmil	#6 – 350 kcmil	3.00	2.50	3.00	3.00	.50
UTH5213B or TCH	200 A, 5 Terminal, SM or LG Hub Open, OH/UG ②③	19.00	13.00	4.94	#6 – 350 kcmil	#6 – 350 kcmil	3.00	2.50	3.00	3.00	.50
UGTH4233B or TCH	200 A, 5 Terminal, SM or LG Hub Open, OH/UG ①②④	27.00	16.00	5.63	#6 – 350 kcmil	#6 – 350 kcmil	3.00	3.00	3.00	3.00	.50
UTH5233B or TCH	200 A, 5 Terminal, SM or LG Hub Open, OH/UG ②③④	27.00	16.00	5.63	#6 – 350 kcmil	#6 – 350 kcmil	3.00	3.00	3.00	3.00	.50
200 Ampere Single-Position — Residential/Commercial w/ Lever Bypass — Three-Phase											
UTH5203B or TCH	200 A, 5 Terminal, SM or LG Hub Open, OH ②③	19.00	10.50	4.94	#6 – 350 kcmil	#6 – 350 kcmil	3.00	2.50	3.00	—	.50
UTH5213B or TCH	200 A, 5 Terminal, SM or LG Hub Open, OH/UG ②③	19.00	13.00	4.94	#6 – 350 kcmil	#6 – 350 kcmil	3.00	2.50	3.00	3.00	.50
UTH5233B or TCH	200 A, 5 Terminal, SM or LG Hub Open, OH/UG ②③④	27.00	16.00	5.63	#6 – 350 kcmil	#6 – 350 kcmil	3.00	3.00	3.00	3.00	.50
UTH7203B or TCH	200 A, 7 Terminal, SM or LG Hub Open, OH ②	19.00	10.50	4.94	#6 – 350 kcmil	#6 – 350 kcmil	3.00	2.50	3.00	—	.50
UTH7213B or TCH	200 A, 7 Terminal, SM or LG Hub Open, OH/UG ②	19.00	13.00	4.94	#6 – 350 kcmil	#6 – 350 kcmil	3.00	2.50	3.00	3.00	.50
UTH7233B or TCH	200 A, 7 Terminal, SM or LG Hub Open, OH/UG ②④	27.00	16.00	5.63	#6 – 350 kcmil	#6 – 350 kcmil	3.00	3.00	3.00	3.00	.50
320 Ampere Commercial — Residential w/ Lever Bypass											
1008792CH	320 A, 5 Terminal, LG Hub Open, OH/UG ②③⑤	34.50	13.00	4.94	3/8" Stud	3/8" Stud	3.00	3.00	3.00	3.00	.50
1008793CH	320 A, 5 Terminal, LG Hub Open, OH/UG ①②⑤	34.50	13.00	4.94	3/8" Stud	3/8" Stud	3.00	3.00	3.00	3.00	.50
1008798CH	320 A, 7 Terminal, LG Hub Open, OH/UG ②⑤	34.50	15.00	5.69	3/8" Stud	3/8" Stud	3.50	3.50	3.50	3.50	.50
1008795CH	320 A, 5 Terminal, LG Hub Open, OH/UG ①②④⑤	36.63	15.00	5.69	3/8" Stud	3/8" Stud	3.50	3.50	3.50	3.50	.50
1008797CH	320 A, 5 Terminal, Solid Top, UG ①②⑤	26.50	15.00	5.69	3/8" Stud	3/8" Stud	3.50	3.50	3.50	3.50	.50
1008799CH	320 A, 7 Terminal, LG Hub Open, OH/UG ②④⑤	39.88	20.00	6.50	3/8" Stud	3/8" Stud	4.00	4.00	4.00	4.00	.50
200 Ampere Multi-Position Sockets — Residential — Single-Phase											
UT2H52353TCH	200 A, 5 Terminal, 2 Position, LG Hub Open, OH/UG ⑥⑦	23.56	32.78	6.00	1/0 – 500 kcmil	#6 – 350 kcmil	3.50	3.50	3.50	3.50	.75
UT3H52353TCH	200 A, 5 Terminal, 3 Position, LG Hub Open, OH/UG ⑥⑦	23.56	43.91	6.00	1/0 – 500 kcmil	#6 – 350 kcmil	3.50	3.50	3.50	3.50	.75
UT4H52393TTCH	200 A, 5 Terminal, 4 Position, LG Hub Open, OH/UG ⑥⑦	23.56	61.03	6.00	1/0 – 500 kcmil	#6 – 350 kcmil	3.50	3.50	3.50	3.50	.75
UT5H52393TTCH	200 A, 5 Terminal, 5 Position, LG Hub Open, OH/UG ⑥⑦	23.56	72.16	6.00	1/0 – 500 kcmil	#6 – 350 kcmil	3.50	3.50	3.50	3.50	.75
UT6H52393TTCH	200 A, 5 Terminal, 6 Position, LG Hub Open, OH/UG ⑥⑦	23.56	83.28	6.00	1/0 – 500 kcmil	#6 – 350 kcmil	3.50	3.50	3.50	3.50	.75

Meter Breaker Combo Units

CMBX1212B200BTS	200 A, 5 Terminal, 200 A Main Breaker, OH/UG ②⑧⑨	39.91	14.44	5.38	#6 – 350 kcmil	Feed Thru Lugs	4.00	—	4.00	4.00	.75
CMBX3242B200BTS	200 A, 5 Terminal, 200 A Main Breaker, OH/UG ②⑩	39.91	14.44	5.38	#6 – 350 kcmil	—	4.00	—	4.00	4.00	.75
CMBXB200BTS	200 A, 5 Terminal, 200 A Main Breaker, OH/UG ②⑨	39.91	14.44	5.38	#6 – 350 kcmil	Feed Thru Lugs	4.00	—	4.00	4.00	.75

① 5th terminal in 9 o'clock position.

② Lever bypass.

③ 5th terminal in 6 o'clock position.

④ Offset design.

⑤ Anti-inversion clip installed.

⑥ Center feed.

⑦ Ground connection.

⑧ 12 circuit distribution section.

⑨ Includes feed-through lugs.

⑩ 32/42 circuit distribution section.

Table 15. Cutler-Hammer Meter Socket Accessories

Cutler-Hammer Catalog Number	Description	Cutler-Hammer Catalog Number	Description
ARP00003CH1	1.00-Inch Hub	ARP00008CH	Small Hub Closure Plate — Aluminum
ARP00004CH12	1.25-Inch Hub	ARP00016CHB	Large Hub Closure Plate
ARP00005CH15	1.50-Inch Hub	ARP00015CHAP	Hub Adapter Plate — Large to Small
ARP00006CH2	2.00-Inch Hub — Small Opening	ARP00035CHJ	Replacement — Plug-in Fifth Terminal (R and RS Models Only)
ARP00007CH25	2.50-Inch Hub — Small Opening	ARP00039CH	Replacement Block Assembly for 100 A Sockets — 2/0 Maximum
ARP00017CH2	2.00-Inch Hub — Large Opening	ARP00048CH	Replacement Block Assembly for 200 A Sockets — 350 Maximum
ARP00018CH25	2.50-Inch Hub — Large Opening	ARP000354CH	Replacement Block Assembly for 150 A Sockets — 250 Maximum
ARP00019CH3	3.00-Inch Hub — Large Opening	ARP00129CH	#4 – 600 kcmil Lug
ARP00021CH4	4.00-Inch Hub — Large Opening	ARP00427CH	#6 – 350 kcmil Dual Lug
ARP00002CHB	Small Hub Closure Plate	ARP00119CH	#6 – 350 kcmil Lug

Knockout Drawings

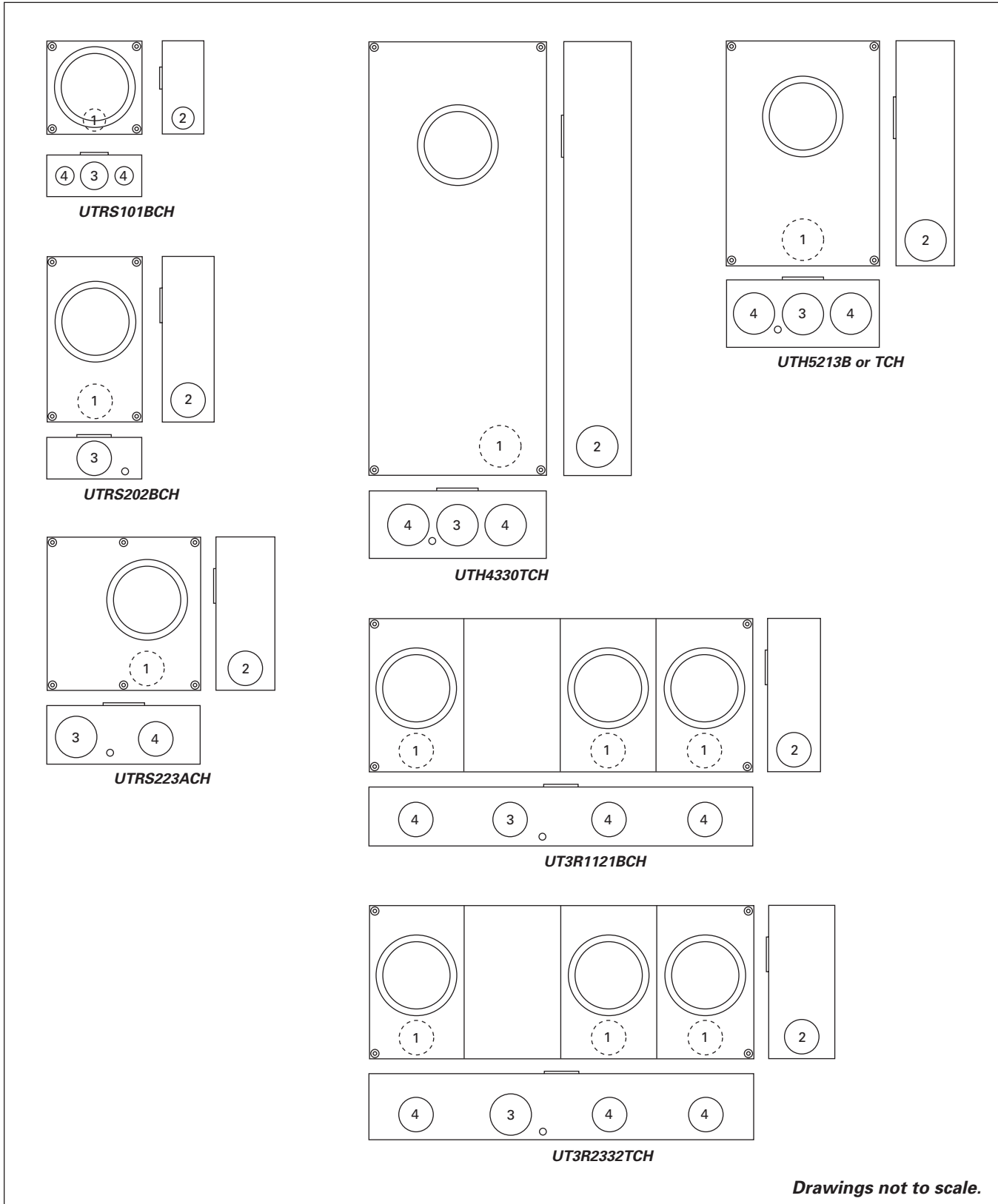


Figure 1. Knockout Drawings

Product Description

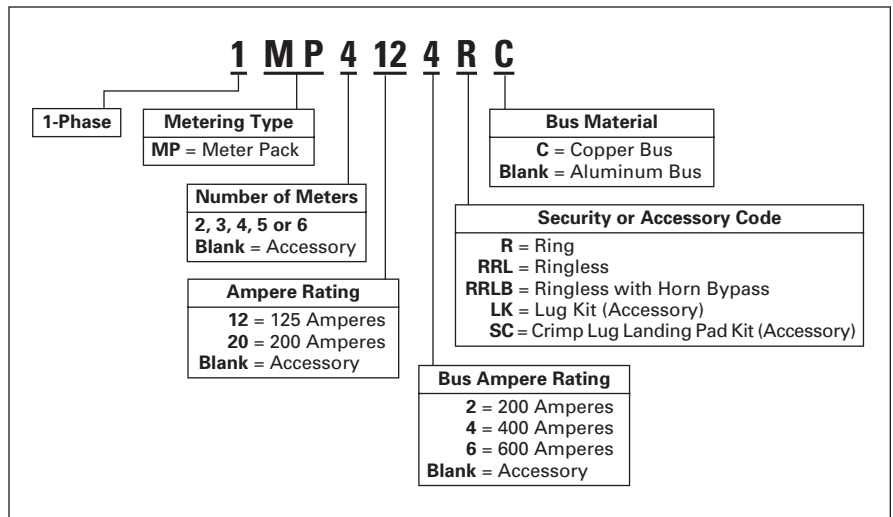


Meter Pack

- Eaton’s Cutler-Hammer 1MP units are self-contained (main terminal box included) for installations requiring up to six meter socket positions in a single enclosure.
- Units are not gangable with any other metering device.
- Approved by major power companies, UL listed, suitable as service equipment and meets the service and electrical requirements of EUSERC and CECHA.
- Series rating up to 100 kAIC.
- All ringless cover devices include fifth jaw as standard.
- Ring type devices do not include fifth jaw as standard. Order **1MM5JK** if needed.
- Bondable neutral.
- 120/240 Vac, single-phase, 3-wire metering device.
- Up to 600 amperes maximum horizontal bus rating.
- Incoming lugs not included (phase A, phase B, and neutral).
- Indoor/outdoor construction.
- Provision for 2-pole breaker (plug-on type for 125 ampere sockets and bolt-on type for 200 ampere sockets) — circuit breakers not included.
- Underground incoming feed.
- Aluminum or copper bus.

Product Selection

Table 16. Meter Pack Catalog Numbering System



When Ordering:

1. Determine catalog number of the basic device.
2. Include Lug Kit for incoming section. See **Table 20**.
3. Find quantity and catalog numbers for tenant circuit breakers. (Order one breaker per socket.) See **Page 13**.
4. Select required accessories. See **Page 16**.

Table 17. Meter Packs — Aluminum Bus

Socket Ampere Rating	Number of Meter Sockets	Bus Ampere Rating	Main Tenant Breaker Type ^①	Catalog Number	Semi-flush Flange Kit Catalog Number
Ringless Style Meter Socket Covers ^②					
125	2	200	Plug-on Type	1MP2122RRL ^{③④}	1MPSFK1
	2	200	Plug-on Type	1MP2122RRLC	1MPSFK1
	3	400	BR_	1MP3124RRL	1MPSFK2
	4	400	BRH_	1MP4124RRL	1MPSFK2
	5	600	BRHH_	1MP5126RRL	1MPSFK3
	6	600	—	1MP6126RRL	1MPSFK3
200	2	400	Bolt-on Type	1MP2204RRL	1MPSFK4
	3	600	CC2_X	1MP3206RRL	1MPSFK5
	4	600	CHH2_H2X	1MP4206RRL	1MPSFK5
	5	600	CHH2_H4X	1MP5206RRL	1MPSFK6
	6	600	CHH_X	1MP6206RRL	1MPSFK6
	Ringless Style Covers with Horn Bypass ^②				
125	2	200	Plug-on Type	1MP2122RRLB ^{③④⑤}	1MPSFK1
	2	200	Plug-on Type	1MP2122RRLBC ^⑤	1MPSFK1
	3	400	BR_	1MP3124RRLB ^⑤	1MPSFK2
	4	400	BRH_	1MP4124RRLB ^⑤	1MPSFK2
	5	600	BRHH_	1MP5126RRLB ^⑤	1MPSFK3
	6	600	—	1MP6126RRLB ^⑤	1MPSFK3
200	2	400	Bolt-on Type	1MP2204RRLB ^⑤	1MPSFK4
	3	600	CC2_X	1MP3206RRLB ^⑤	1MPSFK5
	4	600	CHH2_H2X	1MP4206RRLB ^⑤	1MPSFK5
	5	600	CHH2_H4X	1MP5206RRLB ^⑤	1MPSFK6
	6	600	CHH_X	1MP6206RRLB ^⑤	1MPSFK6

① See **Table 22**.
 ② Fifth jaw factory installed at 9 o'clock position.
 ③ Main lugs included. #6 – 300 kcmil. (Optional lugs are not available.)
 ④ Bottom feed only.
 ⑤ CECHA approved.

Note: See **Table 20** for Main Lug Kit Selection. See **Table 21** for Wire Sizes.

Meter Packs

Table 18. Meter Packs — Copper Bus

Socket Ampere Rating	Number of Meter Sockets	Bus Ampere Rating	Main Tenant Breaker Type ^①	Catalog Number	Semi-flush Flange Kit Catalog Number
----------------------	-------------------------	-------------------	---------------------------------------	----------------	--------------------------------------

Ringless Style Meter Socket Covers ^②

125	3	400	Plug-on Type BR_ BRH_ BRHH_	1MP3124RRLC	1MPSFK2
	4	400		1MP4124RRLC	1MPSFK2
	5	600		1MP5126RRLC	1MPSFK3
	6	600		1MP6126RRLC	1MPSFK3
200	2	400	Bolt-on Type CC2_X CHH2_H2X CHH2_H4X CHH_X	1MP2204RRLC	1MPSFK4
	3	600		1MP3206RRLC	1MPSFK5
	4	600		1MP4206RRLC	1MPSFK5
	5	600		1MP5206RRLC	1MPSFK6
6	600	1MP6206RRLC	1MPSFK6		

Ringless Style Covers with Horn Bypass ^{②③}

125	3	400	Plug-on Type BR_ BRH_ BRHH_	1MP3124RRLBC	1MPSFK2
	4	400		1MP4124RRLBC	1MPSFK2
	5	600		1MP5126RRLBC	1MPSFK3
	6	600		1MP6126RRLBC	1MPSFK3
200	2	400	Bolt-on Type CC2_X CHH2_H2X CHH2_H4X CHH_X	1MP2204RRLBC	1MPSFK4
	3	600		1MP3206RRLBC	1MPSFK5
	4	600		1MP4206RRLBC	1MPSFK5
	5	600		1MP5206RRLBC	1MPSFK6
6	600	1MP6206RRLBC	1MPSFK6		

^① See Table 22.

^② Fifth jaw factory installed at 9 o'clock position.

^③ CECHA approved.

Table 19. CECHA Approved Meter Socket Accessories

Description	Catalog Number
Pedestal Trough Raceway for Underground Services ^④	
36.00-Inch Pedestal Trough Raceway (36.00" H 9.00" W 4.25" D)	1008934CH
54.00-Inch Pedestal Trough Raceway (54.00" H 9.00" W 4.25" D)	1008845CH
Adapter Plates	
Adapter Plate for 2 – 4 Gang	1MP34EW125
Adapter Plate for 5 – 6 Gang	1MP56EW125

^④ Bottom raceway adapter plates required.

**Table 20. Main Lug Kit Selection —
Field Installed Kits for Either 400 or 600 Ampere Main Bus**

Line Lug and Wire Sizes Order Separately and Field Install	Line Lug Kit Catalog Number Order Three Kits (For Two Lines and Neutral)
(1) #6 – 600 kcmil or (2) 2/0 – 250 kcmil (2) 250 – 500 kcmil (3) #4 – 300 kcmil (1) 750 kcmil Crimp lug landing pad 250 – 750 kcmil	1MPLK1 1MPLK3 1MPLK4 1MPLK2 ^⑤ 1MPSC1 ^⑥

^⑤ This lug is not UL listed.

^⑥ This kit comes with three pads for two lines and neutral. Each pad will accept one or two crimp lugs. Cannot be used on 1MP2122R, RL and RLB EUSERC underground termination.

Table 21. Wire Sizes — Neutral and Ground Lugs

Description	Wire Size, Al/Cu	Catalog Number
Neutral: 125 ampere meter pack 200 ampere meter pack	#6 – 2/0 #1/0 – 300 kcmil	— —
Equipment Ground Bar: 125 ampere meter pack 200 ampere meter pack	#14 – #2 #14 – 2/0	— —
Optional Ground Bar	#6 – 2/0	1MMGBK

Note: Each stack includes a neutral and ground bar.
If an extra ground bar is needed, order 1MMGBK.

October 2004

Main Tenant Circuit Breakers

Product Description

1MP, 1MM and 3MM
Main Tenant Circuit Breakers

The following Cutler-Hammer breakers are to be used on 1MP, 1MM and 3MM modular metering stacks. They are 120/240 Vac — field installed.



BR2100



CC2200

Product Selection

Table 22. 1MP, 1MM and 3MM Main Tenant Circuit Breakers

Description	Number of Poles	Main Tenant Circuit Breaker Ampere Rating	Catalog Number				
			10,000 AIC	22,000 AIC	25,000 AIC	42,000 AIC	100,000 AIC
Plug-on type circuit breakers used with 1MP, 1MM and 3MM 125 ampere modular metering stacks	2	60	BR260	BRH260	—	BRHH260	—
	2	70	BR270	BRH270	—	BRHH270	—
	2	80	BR280	BRH280	—	BRHH280	—
	2	90	BR290	BRH290	—	BRHH290	—
	2	100	BR2100	BRH2100	—	BRHH2100	—
	2	110	BR2110	BRH2110	—	BRHH2110	—
Bolt-on type circuit breakers used with 1MP, 1MM and 3MM 200 ampere modular metering stacks	2	60	—	—	CHH2060H2X	CHH2060H4X	CHH2060X
	2	70	—	—	CHH2070H2X	CHH2070H4X	CHH2070X
	2	80	—	—	CHH2080H2X	CHH2080H4X	CHH2080X
	2	90	—	—	CHH2090H2X	CHH2090H4X	CHH2090X
	2	100	CC2100X	—	CHH2100H2X	CHH2100H4X	CHH2100X
	2	125	CC2125X	—	CHH2125H2X	CHH2125H4X	CHH2125X
	2	150	CC2150X	—	CHH2150H2X	CHH2150H4X	CHH2150X
	2	175	CC2175X	—	CHH2175H2X	CHH2175H4X	CHH2175X
	2	200	CC2200X	—	CHH2200H2X	CHH2200H4X	CHH2200X

Table 23. Main Breaker Selection Chart

Maximum Ampere Rating	2-Pole Breaker Catalog Number	
	10 kAIC	22 kAIC
100	BW2100	BWH2100
125	BW2125	BWH2125
150	BW2150	BWH2150
200	BW2200	BWH2200
Load Side Lug Kit for BW Breakers ①		MCBK225

① When a provision for main is provided, order one of the main breakers listed in this table. All panels are dual labeled to accept Types BW and BWH Main Breakers.

Main Tenant Circuit Breakers

Dimensions and Knockouts (in Inches) — 1MP Meter Packs — Aluminum and Copper Bus

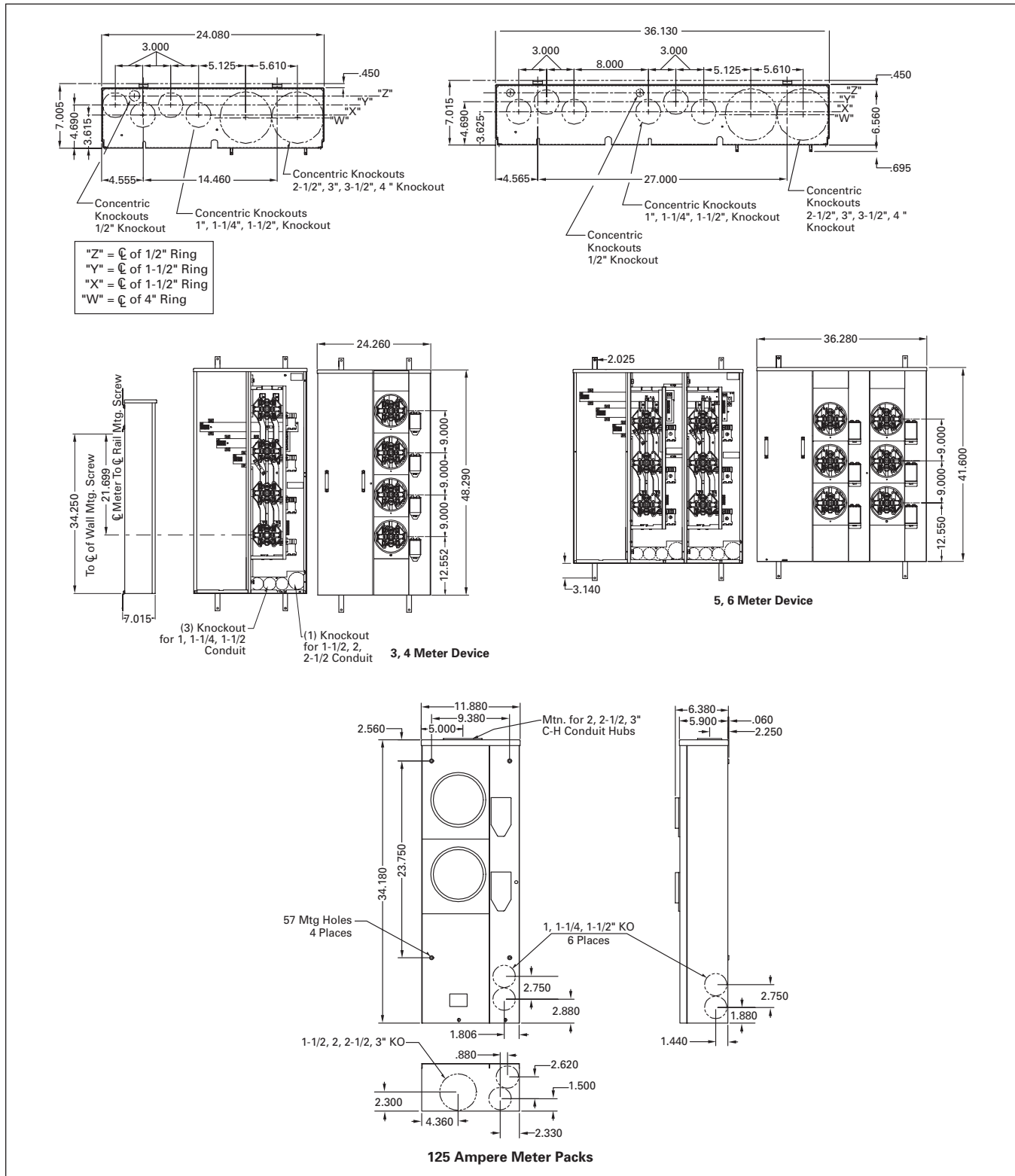


Figure 2. 125 Ampere Maximum Tenant Breaker

Meter Packs

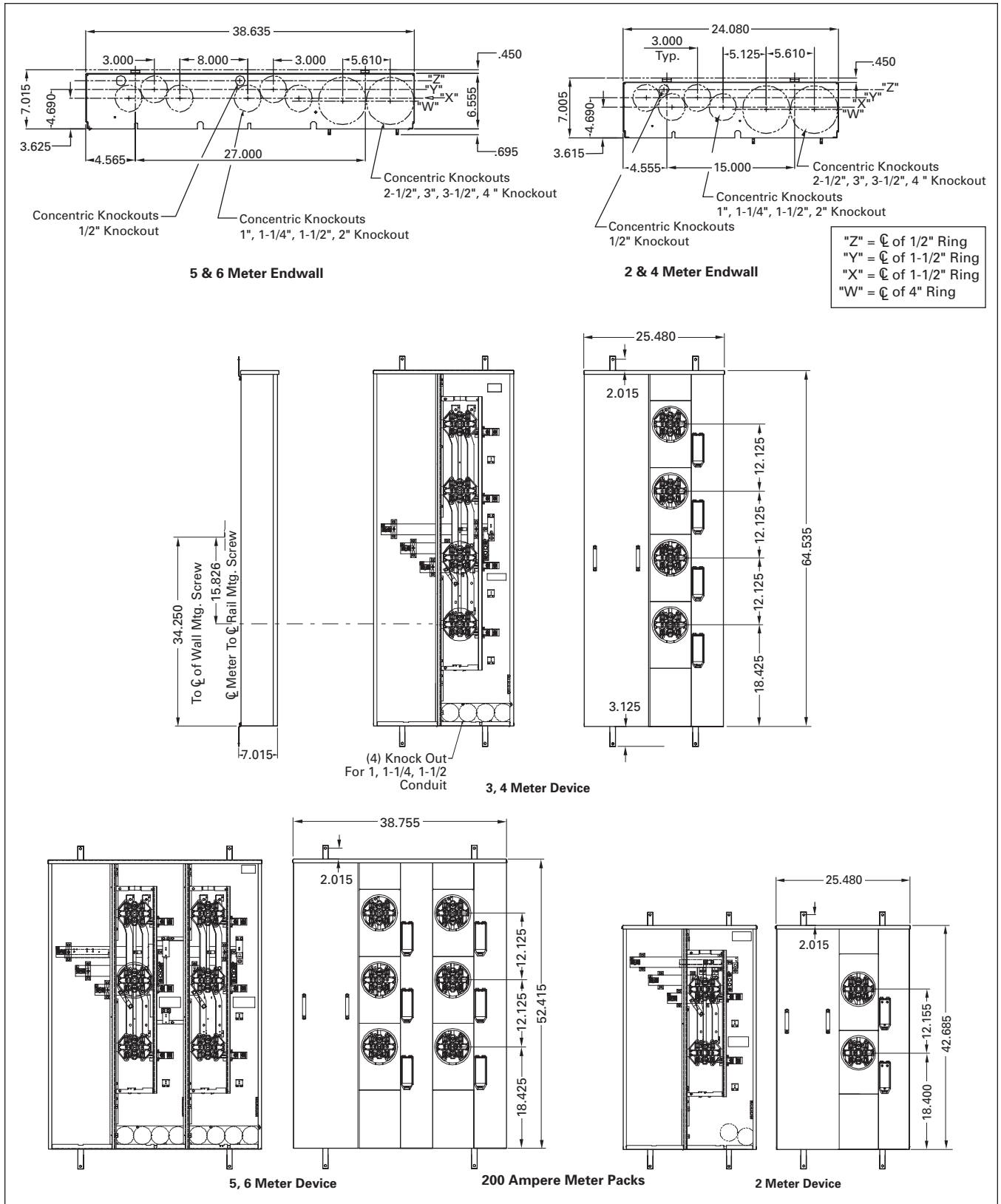


Figure 3. 200 Ampere Maximum Tenant Breaker

Accessories

Meter Packs

Table 24. Accessories for 1MP, 1MM and 3MM Modular Metering Stacks

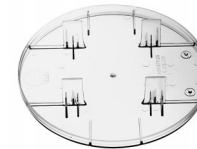
Description	Application	Catalog Number
Fifth Jaw Kit	Bolted onto neutral in the 3, 6 or 9 o'clock position. Typically used on network metering systems (3-phase in/single-phase out) or when specified by utility company.	1MM5JK
Isolated Fifth Jaw Kit	Connects to the neutral with an insulated wire.	1MM5JKOP
Horn Bypass	Used only on ringless cover stacks, kits can be installed on 125 ampere or 200 ampere sockets. Note: For 1MP2122RRL use:	1MMBPH WCG8HB
Meter Bypass Jumper	Installed on 125 ampere or 200 ampere sockets. Jumpers are plugged into jaws. Order Lexan® cover plate with bypass jumpers to prevent access to meter socket once energized. (Not UL listed.)	1MMBPJ
Lexan Blank Cover	Circular cover mounted on ring or ringless devices preventing access to meter socket while meter is not in place. Includes 4 plastic tabs which plug into each jaw.	1MMPCP
	Same as 1MMPCP minus the tabs located in the back to plug into jaws. This device to be used while meter bypass jumpers are in place (1MMBPJ).	1MMACP
Blank Meter Socket Cover	Used for 125 ampere stacks. Fits bottom socket only. Kit replaces existing meter cover preventing access to meter socket. Includes hasp for seal.	1MMBC125B
	Used on 200 ampere stacks. Fits bottom socket only. Kit replaces existing meter cover preventing access to meter socket. Includes hasp for seal.	1MMBC200B
Wall Mounting Rail	Rails are 4 feet (1.2 m) in length. Bolted on wall for stacks, packs, and mains to be hung.	1MMWB
Bussed Spacer	Bussed spacer 1200 ampere 4-inch (101.6 mm). Required when stacks are mounted on right-hand side in EUSERC areas. (Copper)	3MMBSK
Bus Duct Riser/ Meter Center Connection	Available in 400, 600, 800 ampere Main Fusible units only. Contact Product Line for details.	—



Fifth Jaw Kit



Horn Bypass Kit



Lexan Blank Cover



Wall Mounting Rail



Bussed Spacer

Cutler-Hammer is a federally registered trademark of Eaton Corporation. INNER-TITE is a registered trademark of Inner-Tite Corp. Lexan is a registered trademark of General Electric Co., USA. UL is a federally registered trademark of Underwriters Laboratories Inc.

Eaton Electrical Inc.
1000 Cherrington Parkway
Moon Township, PA 15108-4312
United States
tel: 1-800-525-2000
www.EatonElectrical.com